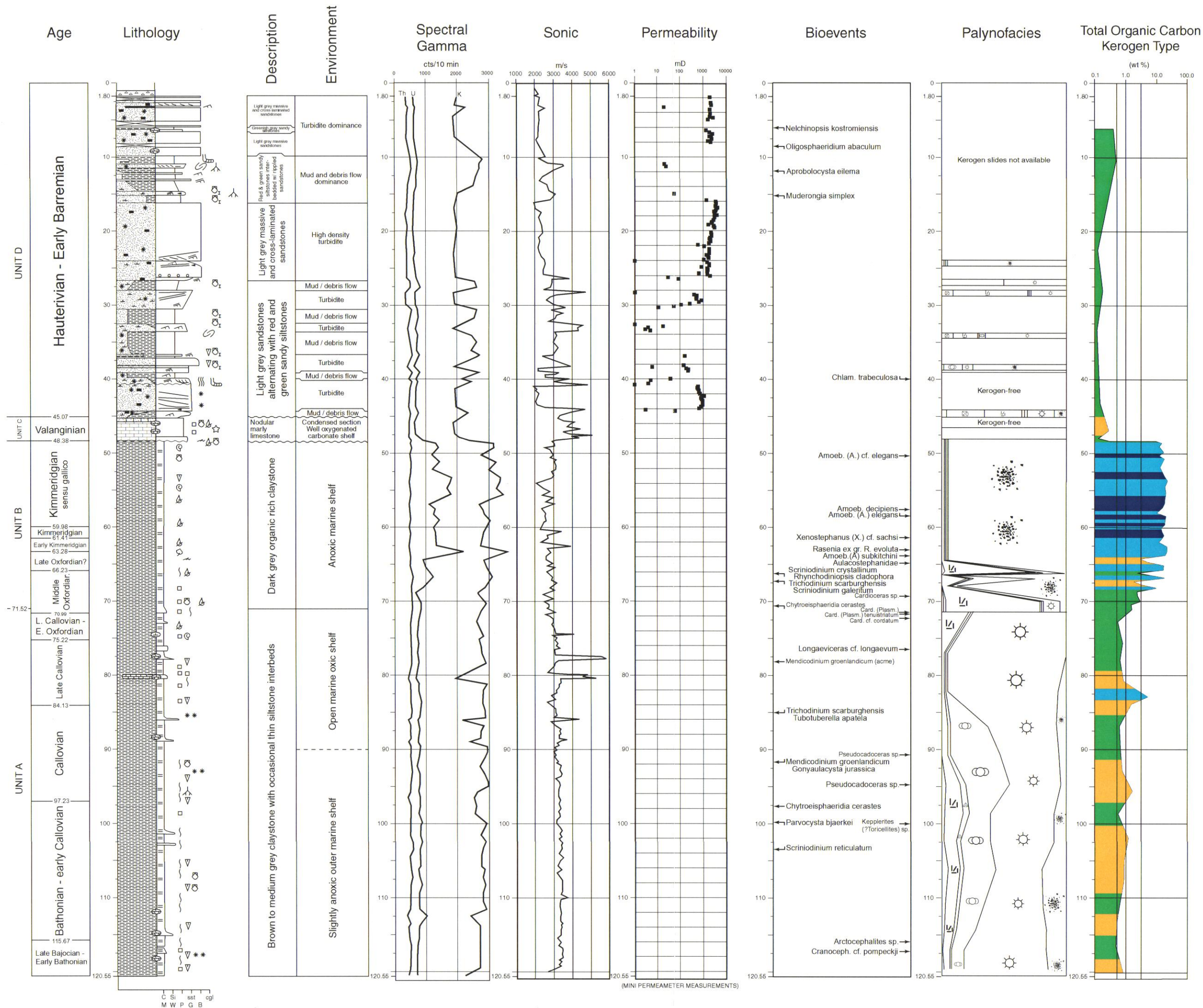


Core 7533/3-U-1 Composite



PALYNOFACIES

- Terrestrial amorphous matter
- Wood and cuticles
- Blade-shaped, black debris
- Pteridophyte spores
- Bisaccate pollen
- Microplankton
- Marine amorphous matter

KEROGEN TYPE

Type I	HI 600 mg/g TOC
Type II	HI 400 - 600 mg/g TOC
Type II / III	HI 200 - 400 mg/g TOC
Type III	HI 50 - 200 mg/g TOC
Type IV	HI 50 mg/g TOC

