



Document Id. : R-EUG-0188
 Reference Code :
 Date : AUGUST 1993
 Revision Number :

Title

GEOCHEMICAL DATA REPORT FOR WELL 31/4-9

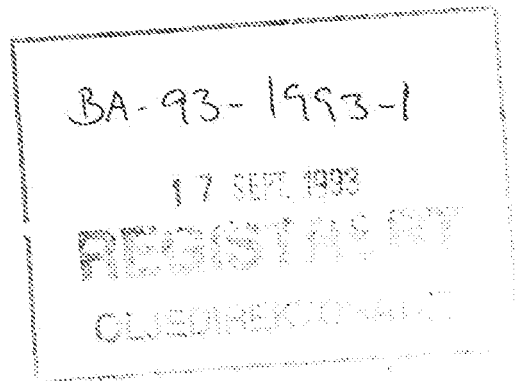
Authors(s)

IDAR HORSTAD

Abstract

Two samples from the cored interval in well 31/4-9 have been analysed by Iatroscan (TLC-FID) and the saturated hydrocarbon fraction from one of the samples were analysed by GC-FID and GC/MS.

NOT INCLUDED IN WELL TRADE.



Key Words

31/4-9, geochemistry, GC-FID, GC/MS, Brage Field

Classification: Free Saga and partners Internal Confidential Strictly confidential

Org. Unit	EUG				
Reviewed	<i>N. Mills</i>				
Accepted					
Approved	<i>T. Høiland</i>				

Hovedkontor/Head Office Oslo:

Adresse/Address: Kjerboveien 18, Postboks 490, N-1301 SANDVIKA
 Telefon/Telephone: Nasjonalt 67 12 66 00, Intern. +47 87 12 66 00

Teleks/Telex: 78852 Saga n
 Telefaks: Nasjonalt 67 126668, Intern. +47 87 126666

Driftsdivisjon/Operations Division Stavanger:

Adresse/Address: Godesetdalen 8, Postboks 117, N-4003 FORUS
 Telefon/Telephone: Nasjonalt 04 57 40 00, Intern. +47 4 57 40 00

Teleks/Telex: 33244 sagop n
 Telefaks: Nasjonalt 04 570261, Intern. +47 4 570261

1 Objectives

The objective of this study was to characterise the extractable hydrocarbons in two core samples from well 31/4-9 from the Brage Field, Norway.

2 General well information

The well was drilled by Norsk Hydro as operator of licence 055 from 23/1-87 to 7/3-87 and reached a total depth of 2480 mRKB. The KB of the rig was 23 metres and the water depth was 147 metres.

3 Samples and analytical scheme

Two samples were picked from the cored interval in the well on the 16th of September 1992 at NPD's store in Stavanger. The samples (see table 1) were analysed by Iatroscan (TLC-FID), and the saturated hydrocarbon fraction from one of the samples (2130.0 mRKB) was analysed by GC-FID and GC/MS.

4 Vitrinite reflectance

No samples were analysed.

5 TOC and Rock Eval

No samples were analysed.

6 Iatroscan (TLC-FID)

One sample was analysed, and the results are tabulated in Table 1.

7 GC-FID

The saturated hydrocarbon fraction from one sample (2130.0 mRKB) was analysed by GC-FID.

Since the evaporative loss has affected the relative concentration of individual compounds, no ratios were calculated.

The GC-FID chromatograms are shown in figure 1.

8 GC/MS

The saturated hydrocarbon fraction from the sample at 2130.0 mRKB was analysed by GC/MS and the mass chromatograms for m/z 191, 177, 217 and 218 are shown in figure 2.

Selected biological marker parameters are given in table 2.

9 Stable carbon isotopes

No samples were analysed.

Tab. 1

0 WELL NAME	1 NATIONALITY	2 LABORATORY	3 U.DEPTH	4 L.DEPTH	5 SAMPLE TYPE	6 LITHOLOGY	7 EOM mg/g
1 31/4-9	NOR	SAGA	2130.00	2130.00	CCP	SST	0.00
2 31/4-9	NOR	SAGA	2169.70	2169.70	CCP	SST	0.00

0 WELL NAME	8 SAT (mg/g)	9 ARO (mg/g)	10 POL (mg/g)	11 SAT %	12 ARO %	13 POLARS %	14 SAT ARO	15 METHODS
1 31/4-9	0.00	0.00	0.00					GC, GC/MS
2 31/4-9	0.00	0.00	0.00					Iatroscan

Tab. 2

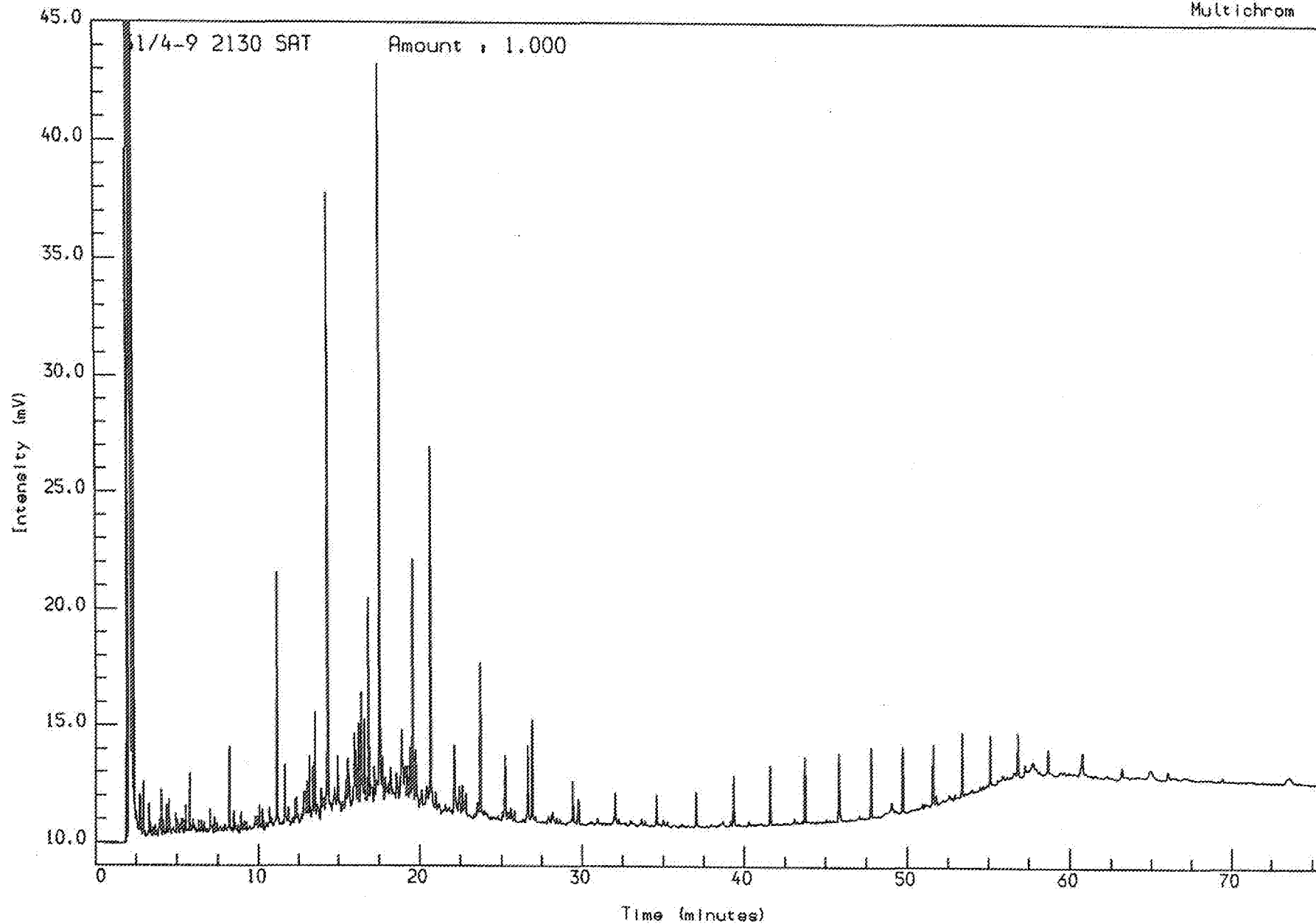
0 WELL NAME	1 CONS.	2 UPPER DEPTH	3 DEPTH	4 LITH	5 SAMPLE TYPE	6 Q/E	7 Ts/Tm	8 Z/C	9 ab/ab+ba
1 31/4-9	SAGA	2130.00	2130.00	SST	CCP	0.10	0.47	0.23	0.77

0 WELL NAME	10 %22S	11 %20S	12 %bb	13 a/a+j	14 C27st	15 C28st	16 C29st
1 31/4-9	0.34	0.23	0.45	0.67	22.44	27.33	50.22

Fig. 1

Analysis Name : [DEFPROJECT] 3 S104,8,1.

Multichrom



Acquired on 5-OCT-1992 at 19:27

Reported on 6-OCT-1992 at 10:09

Fig. 2

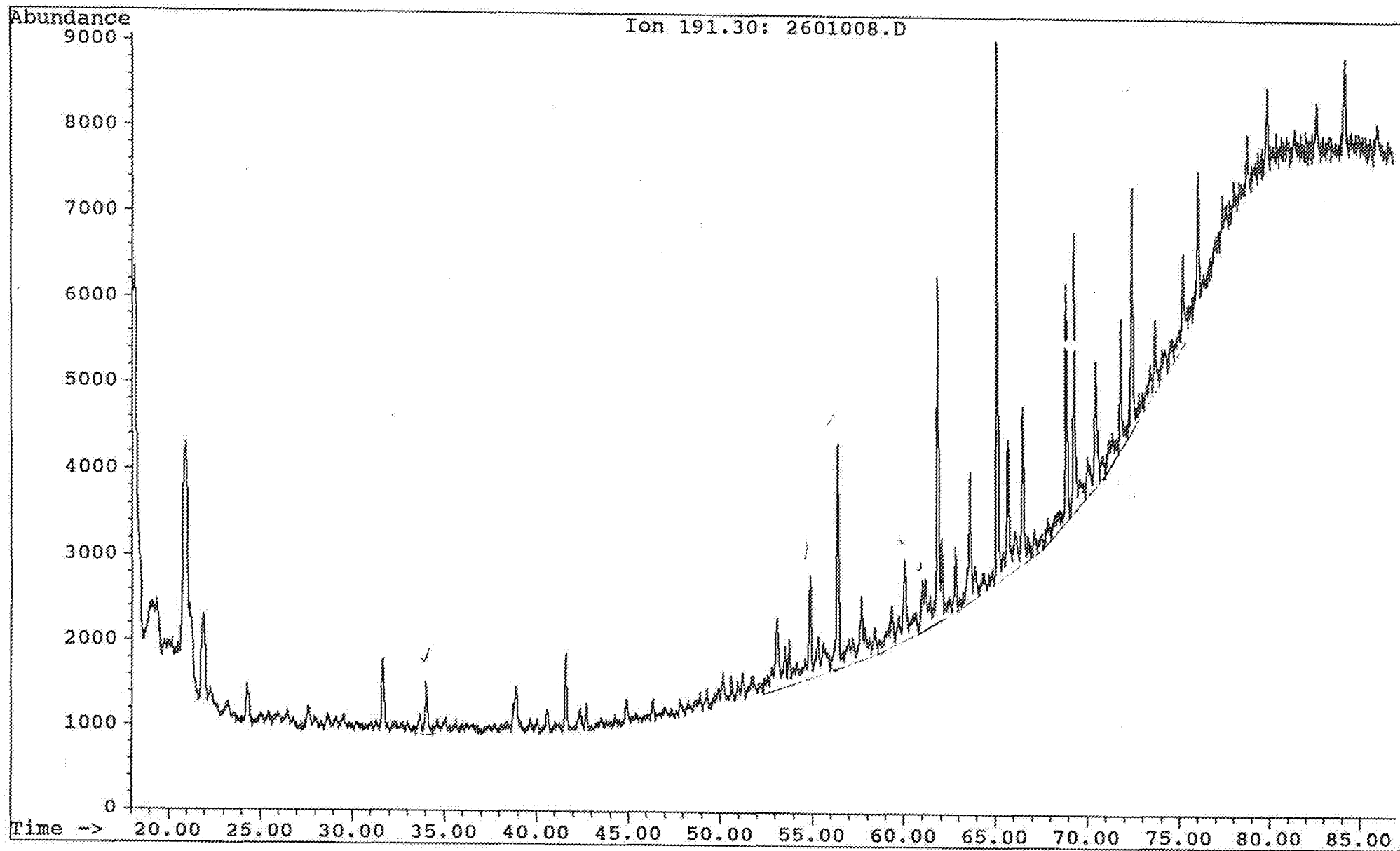
Saga Petroleum a.s.

File: C:\CHEMPC\DATA\30_31\2601008.D Inst: HP5971A Inj: Split Meth: BMS.M

ite acquired: 8 Oct 92 1:22 am

Sample name:

WELL 31/4-9 2130 sat



Saga Petroleum a.s.

File: C:\CHEMPC\DATA\30_31\2601008.D

Inst: HP5971A

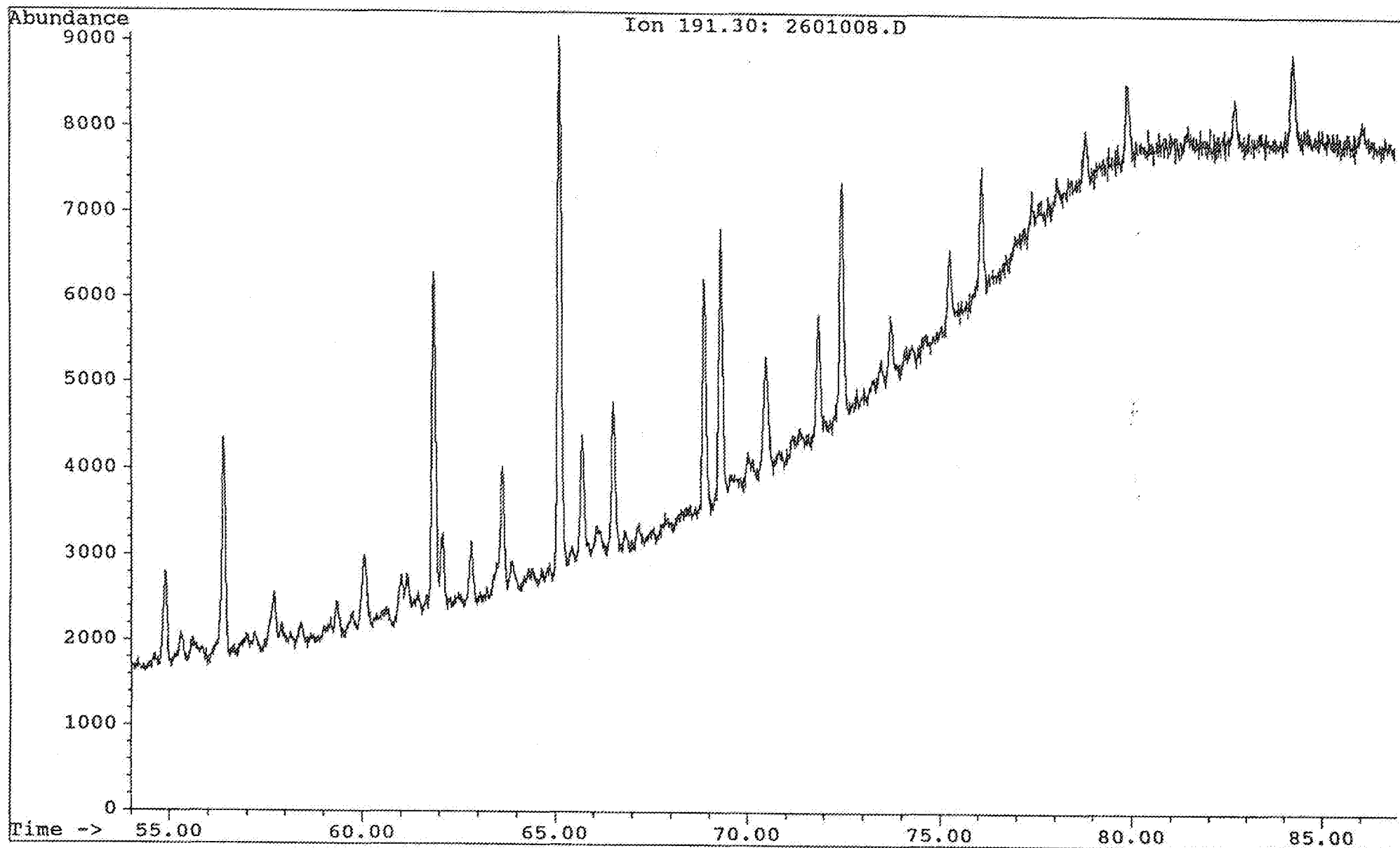
Inj: Split

Meth: BMS.M

Date acquired: 8 Oct 92 1:22 am

Sample name:

WELL 31/4-9 2130 sat

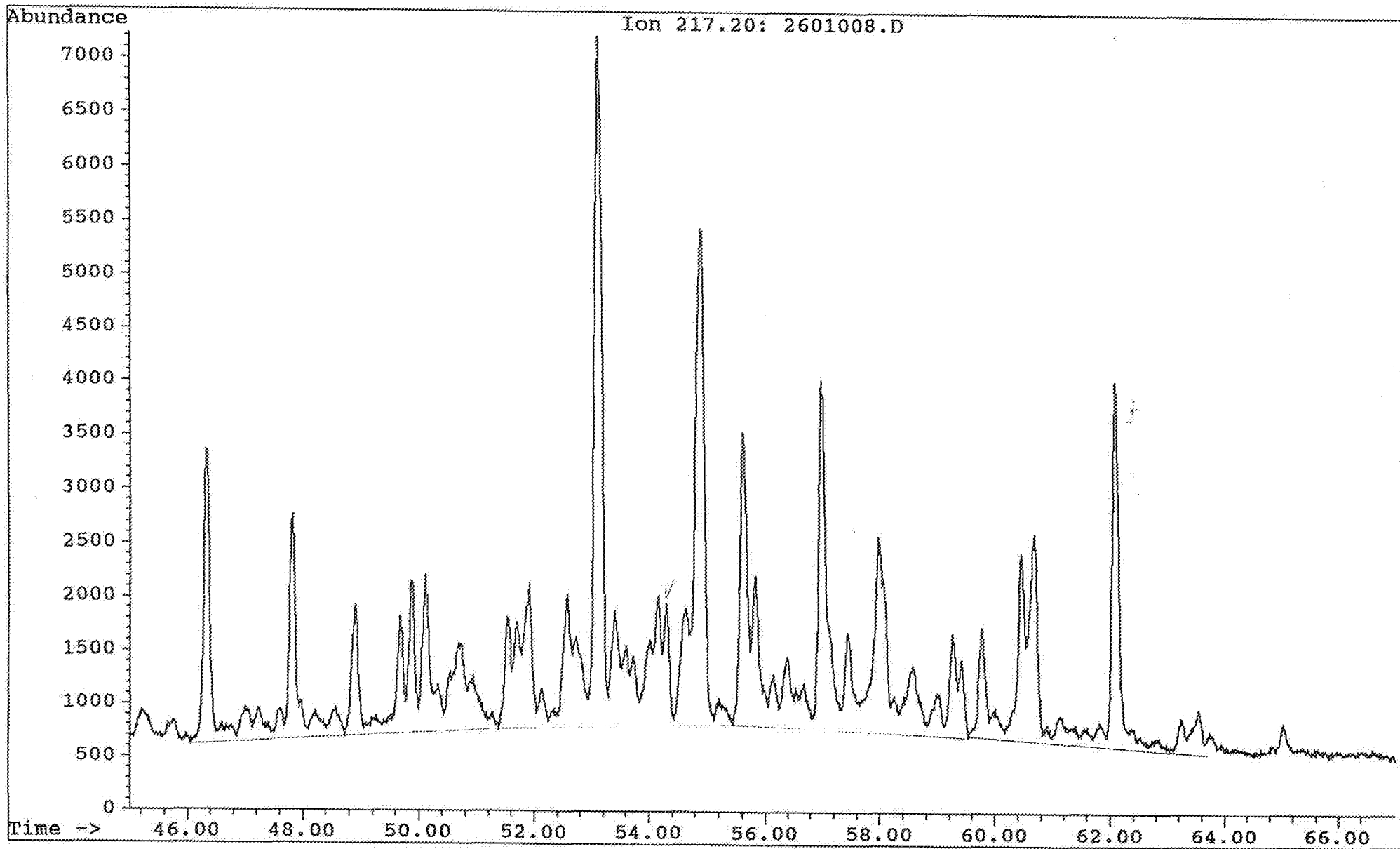


Saga Petroleum a.s.

File: C:\CHEMPC\DATA\30_31\2601008.D Inst: HP5971A Inj: Split Meth: BMS.M

Date acquired: 8 Oct 92 1:22 am

Sample name: WELL 31/4-9 2130 sat



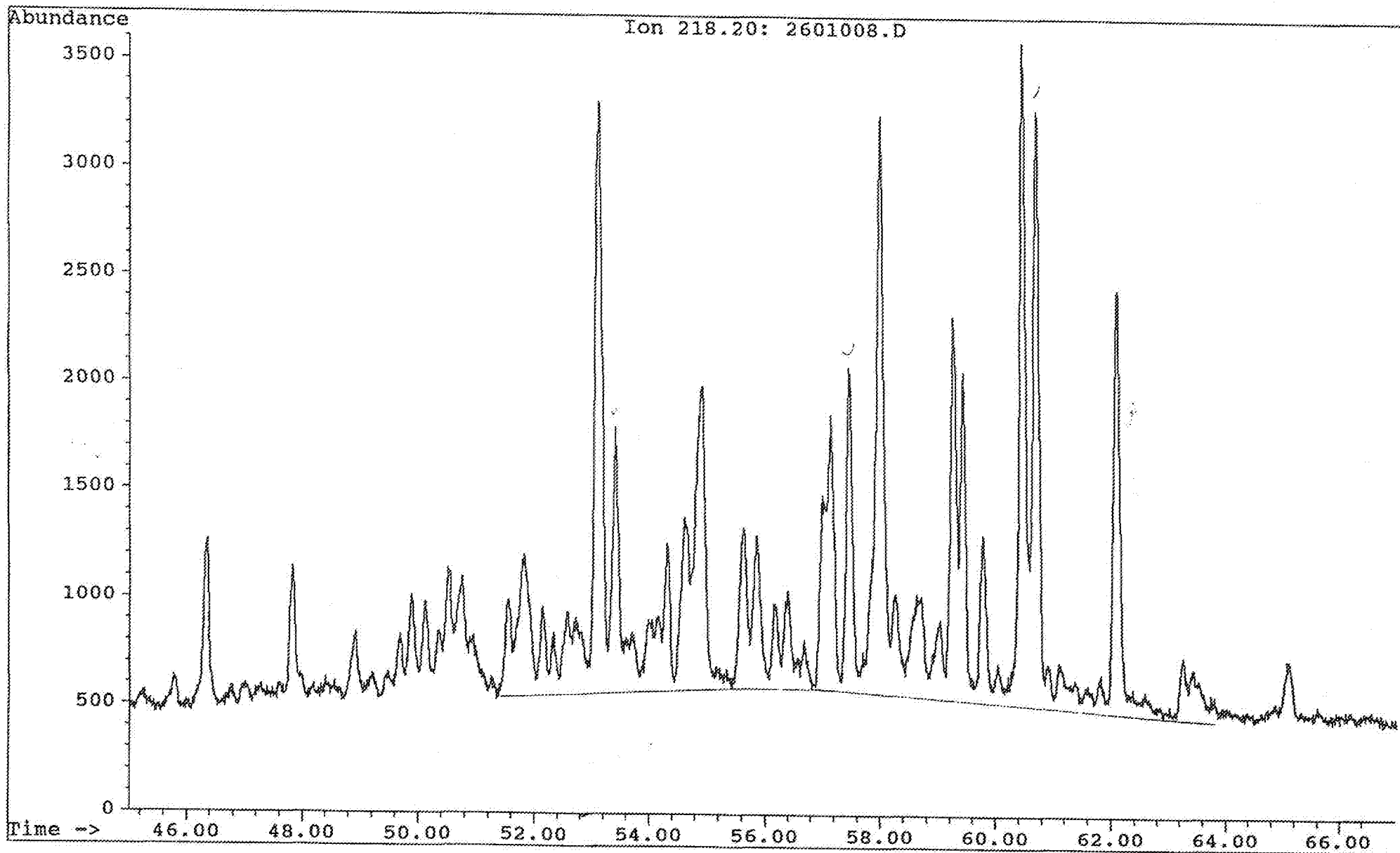
Saga Petroleum a.s.

File: C:\CHEMPC\DATA\30_31\2601008.D Inst: HP5971A Inj: Split Meth: BMS.M

Date acquired: 8 Oct 92 1:22 am

Sample name:

WELL 31/4-9 2130 sat



Saga Petroleum a.s.

File: C:\CHEMPC\DATA\30_31\2601008.D Inst: HP5971A Inj: Split Meth: BMS.M

ate acquired: 8 Oct 92 1:22 am

Sample name: WELL 31/4-9 2130 sat

