

- Drilling and casing data :

- Drilled 36" hole to 158 m
26" hole to 444 m
- Set and cemented together 30" guide at 158 m and 20" casing at 439 m.
- Drilled 17 1/2" hole to 1.812 m.
Set and cemented 13 3/8" at 1.803 m.
- Drilled 12 1/4 hole to 3.942 m
- Drilled 8 1/2 hole to 3.997 m (TD)

- Muds :

- Drilled with sea-water and returns on the sea floor down to 444 m.
- Drilled with an LFC - LC sea-water ; type mud to 1.812 m at which depth the system was salt saturated.
- Drilled with an inverted oil-base mud from 2.900 m to TD (3.997 m).

- Tests :

None.

PRINCIPALES CONSOMMATIONS SUR PUIITS

PUITS: TOR 1

TUBES CASING CONSOMMES

TYPES ET TONNAGES DE CIMENTS UTILISES PAR TUBAGE

TUBAGES ET CIMENTATIONS

Ø	DE. A.....	LONGUEUR	EPAISSEUR	GRADE	FILETAGE
30"	129 à 158	29	1"	B	Squench joints Vetco.
20"	129 à 218	89	133 #	J55	API - STC
20"	218 à 425	207	94 #	J55	Joints Vetco
20"	425 à 439	14	133 #	J55	"
13 3/8	1803 à 1617	186	68 #	J55	BuHress
13 3/8	1617 à 1491	126	68 #	J55	API SC
13 3/8	1491 à 521	971	68 #	J55	API LC
13 3/8	521 à 131	390	68 #	N80	BuHress

Ciment API Classe B
115 T
(Tubages 30" et 20"
descendus simultanément)

47 T API Classe B
+ 20% DYLITE
55 T API Classe B

PRODUITS A BOUE

NOMS DES PRODUITS	QUANTITES
Bentonite	80 T
CMC	25 T
Lignosulfonate	20 T
Soude	10 T
FLOSAL	15 T
Sel	150 T
Baryte	600 T
Invermul	34 T
Duratone	18 T
Petrotone	14 T
	T
	T
	T
PERTES DE BOUE	M ³
EAU	M ³
HUILE OU GAS OIL	420 M ³

UTILISATION	TYPES OU CLASSES DES CIMENTS	TONNAGES
	POUR COLMATAGE DE PERTES	
POUR AUTRES BOUCHONS	Abandon de puits Classe B	25 T
	Classe A	20 T
DIMENSIONS - SERIES - TYPES DES ELEMENTS CONSTITUANT LA TETE DE PUIITS		
Tete de puits NATIONAL type		
"Sea King"		
Ensemble 30" x 20" x 13 3/8"		
Well head 13 3/8 Serie 10.000		
TETE DE PUIITS - SUSPENSION		



Document Id. : R-EUG-0170
 Reference Code :
 Date : AUGUST 1993
 Revision Number :

Title

GEOCHEMICAL DATA REPORT FOR WELL 17/4-1

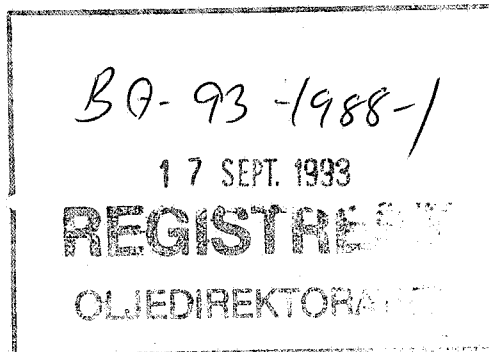
Authors(s)

IDAR HORSTAD

Abstract

Eleven samples from the cored interval in well 17/4-1 have been analysed by iatrosan (TLC-FID). One sample was analysed by GC-FID.

NOT INCLUDED IN WELL TRADE.



Key Words

17/4-1, geochemistry, iatrosan (TLC-FID), GC-FID

Classification: Free Saga and partners Internal Confidential Strictly confidential

Org. Unit	EUG				
Reviewed	N. Mills <i>N. Mills</i>				
Accepted					
Approved	T. H. H. and <i>T. H. H. and</i>				

Hovedkontor/Head Office Oslo:

Adresse/Address
Kjarboveien 18
Postboks 490
N-1301 SANDVIKA

Telefon/Telephone
Nasjonalt 67 12 66 00
Intern. +47 67 12 66 00

Teleks/Telex
78852 Saga n
Telefax
Nasjonalt 67 126666
Intern. +47 67 126666

Driftsdivisjon/Operations Division Stavanger:

Adresse/Address
Godesetdalen 8
Postboks 117
N-4003 FORUS

Telefon/Telephone
Nasjonalt 04 67 40 00
Intern. +47 4 67 40 00

Teleks/Telex
33244 sagap n
Telefax
Nasjonalt 04 670261
Intern. +47 4 670261

1 Objectives

The objective of this study was to characterise the extractable hydrocarbons in eleven core samples from well 17/4-1.

3 Samples and analytical scheme

Eleven samples were picked from the cored interval in the well on the 22nd of January 1992 at NPD's store in Stavanger. All eleven samples (see table 1) were analysed by Iatroscan (TLC-FID). One sample (2283.3 mRKB core depth) was analysed by GC-FID.

4 Vitrinite reflectance

No samples were analysed.

5 TOC and Rock Eval

No samples were analysed.

6 Iatroscan (TLC-FID)

Eleven samples were analysed, and the results are tabulated in Table 1.

7 GC-FID

One sample was analysed, and the GC fingerprint of the saturated hydrocarbon fraction is shown in figure 1.

8 GC/MS

No samples were analysed.

9 Stable carbon isotopes

No samples were analysed.

Tab. 1

IATROSCAN WELL 17/4-1

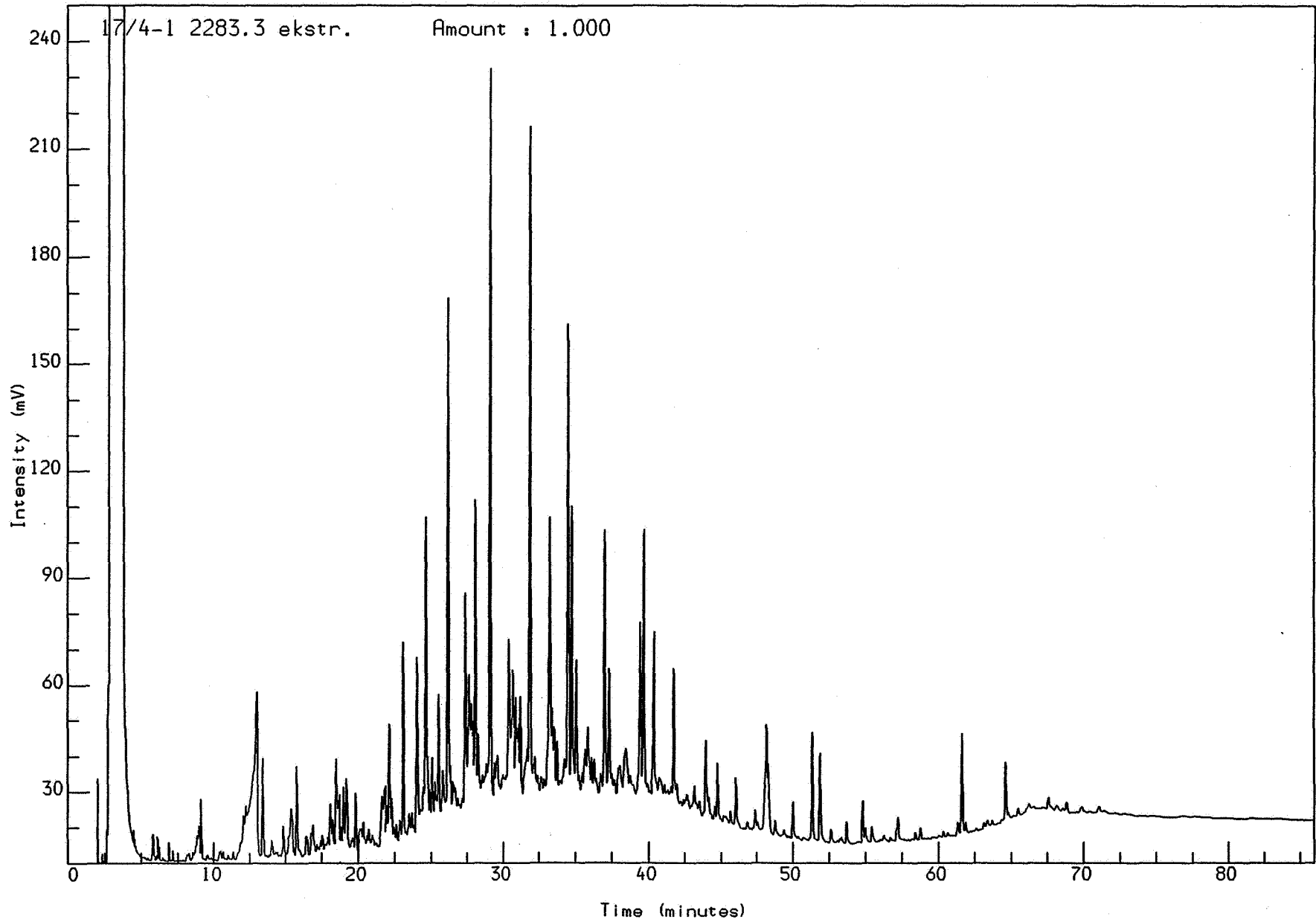
0 WELL NAME	1 NATIONALITY	2 LABORATORY	3 U.DEPTH	4 L.DEPTH	5 SAMPLE TYPE	6 LITHOLOGY	7 EOM (mg/g)
1 17/4-1	NOR	SAGA	2271.00	2271.00	CCP	SST	0.06
2 17/4-1	NOR	SAGA	2272.00	2272.00	CCP	SST	0.10
3 17/4-1	NOR	SAGA	2272.80	2272.80	CCP	SST	0.07
4 17/4-1	NOR	SAGA	2274.60	2274.60	CCP	SST	0.34
5 17/4-1	NOR	SAGA	2275.80	2275.80	CCP	SST	0.37
6 17/4-1	NOR	SAGA	2279.50	2279.50	CCP	SST	0.20
7 17/4-1	NOR	SAGA	2280.80	2280.80	CCP	SST	0.22
8 17/4-1	NOR	SAGA	2283.30	2283.30	CCP	SST	0.72
9 17/4-1	NOR	SAGA	2284.40	2284.40	CCP	SST	0.06
10 17/4-1	NOR	SAGA	2287.20	2287.20	CCP	SST	0.00
11 17/4-1	NOR	SAGA	3882.00	3882.00	CCP	SST	0.17

0 WELL NAME	8 SAT (mg/g)	9 ARO (mg/g)	10 POL (mg/g)	11 SAT %	12 ARO %	13 POL %	14 SAT ARO
1 17/4-1	0.00	0.00	0.06	0.00	0.00	100.00	
2 17/4-1	0.00	0.00	0.10	0.00	0.00	100.00	
3 17/4-1	0.00	0.00	0.07	0.00	0.00	100.00	
4 17/4-1	0.13	0.09	0.12	38.39	26.77	34.83	1.43
5 17/4-1	0.18	0.09	0.10	48.68	25.04	26.28	1.94
6 17/4-1	0.06	0.06	0.07	32.99	32.97	34.04	1.00
7 17/4-1	0.09	0.07	0.05	42.99	32.80	24.21	1.31
8 17/4-1	0.42	0.19	0.11	58.44	26.63	14.92	2.19
9 17/4-1	0.00	0.00	0.06	0.00	0.00	100.00	
10 17/4-1	0.00	0.00	0.00				
11 17/4-1	0.13	0.00	0.04	75.74	0.00	24.26	

Fig. 1

Analysis Name : [DEFTROJELI] 3 S051,2,1.

Multichrom

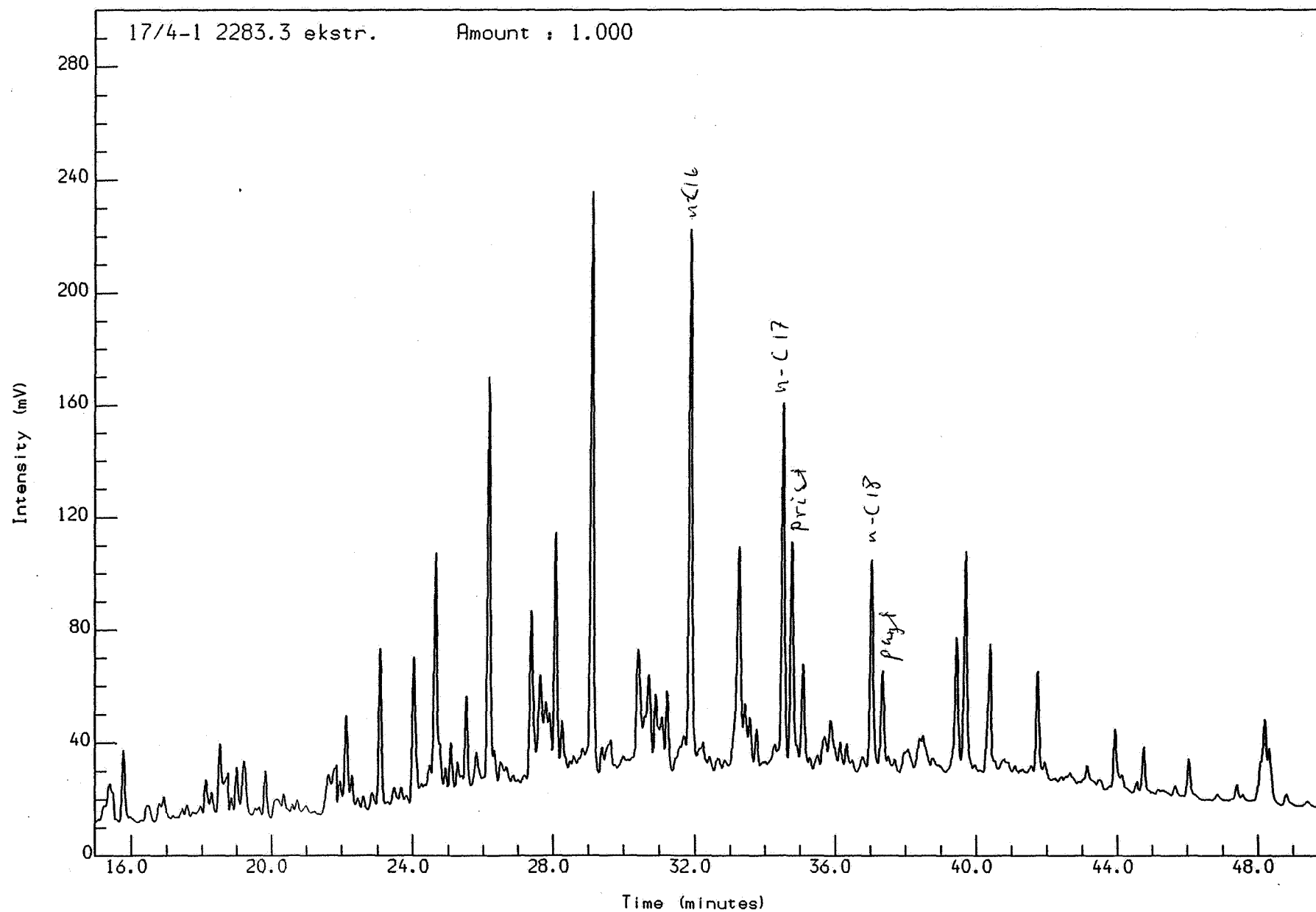


Acquired on 29-APR-1992 at 10:55

Reported on 30-APR-1992 at 11:58

Analysis Name : [DEFPROJECT] 3 s052,2,1.

Multichrom



Acquired on 29-APR-1992 at 14:52

Reported on 2-JUL-1992 at 17:19