

Saturated biomarkers, amounts and heights, Well 6507/2-3

Sample name	End depth	22aa	22bb	27dbS	27dbR	27bbR	27bbS	27aaR	28bbR	28bbS	29aaS	29bbR	29bbS	29aaR	30bbR	30bbS
2500.00	2500.00	19	34	62	37	75	51	55	39	47	30	60	59	36	30	16
2869.50	2869.50	204	148	416	256	278	179	334	162	172	140	202	189	261	37	46
2871.75	2871.75	37	21	71	49	55	33	73	39	40	39	49	33	57	14	15
2877.25	2877.25	814	530	1620	1064	1205	734	1772	781	794	843	930	787	1422	203	180
3260.75	3260.75	1011	691	2940	1755	1989	1333	850	930	1446	944	1797	1586	892	604	671
3500.00	3500.00	23	44	57	34	56	47	47	36	32	27	51	50	35	25	19
3597.00	3600.00	132	169	170	112	136	115	144	68	96	47	110	101	67	29	22
3697.00	3700.00	44	28	95	60	70	49	19	48	65	13	44	46	16	29	30
3797.00	3800.00	1375	984	2628	1543	2112	1671	835	1440	1530	564	1404	1345	590	707	741
3807.00	3810.00	451	265	783	476	617	497	275	350	424	233	459	426	212	185	201
3817.00	3820.00	349	156	1446	820	580	345	251	261	360	199	350	365	169	201	148
3827.00	3830.00	155	120	652	361	398	272	170	192	260	125	280	240	137	88	97
3837.00	3840.00	259	260	382	217	353	285	124	254	274	82	218	241	80	120	123
3847.00	3850.00	1831	1706	3258	1837	2891	2405	1239	2156	2218	763	1941	1841	863	1063	962
3857.00	3860.00	1776	1605	3418	2120	2798	2342	1187	2048	2204	835	1993	1790	914	1127	1018
3867.00	3870.00	1189	1150	2263	1492	1903	1487	728	1392	1501	523	1402	1379	527	689	663
3877.00	3880.00	2868	2231	5893	3506	4175	3346	2016	2966	3342	1170	3107	2750	1265	1763	1454
3887.00	3890.00	2043	1668	4118	2584	3179	2459	1311	2099	2443	947	2253	2197	933	1114	1043
3897.00	3900.00	1157	882	2144	1232	1528	1133	547	1015	1139	393	1060	948	394	456	394
3907.00	3910.00	2274	1557	4648	2893	3312	2396	1315	1944	2649	973	2429	2396	939	1054	942
3917.00	3920.00	1961	1259	4244	2574	2830	2034	1056	1645	2050	825	2006	1883	709	761	749
3927.00	3930.00	585	353	1168	750	770	469	247	402	516	221	579	549	189	209	161
3937.00	3940.00	2250	1702	5606	3349	3614	2330	1240	1778	2017	1108	2524	2310	992	902	794
3947.00	3950.00	1621	1018	3779	2267	2142	1430	668	1077	1445	765	1763	1623	666	679	646
3957.00	3960.00	826	546	2308	1320	1427	868	358	631	856	496	1275	1170	419	435	409
3967.00	3970.00	1054	753	2856	1678	1823	1125	459	800	1086	654	1414	1404	529	426	392
ANCO208A		12	11	28	17	23	23	18	13	11	11	19	21	5	11	7
ANCO208B2		6	8	7	8	6	7	3	4	6	3	6	6	2	2	7
BIOM01		1721	1727	5046	3175	3985	3047	1710	2394	3015	1903	3735	3424	1851	1292	1191
BIOM02		2431	2244	6779	4033	5039	3545	2175	3010	3951	2213	4418	4498	2284	1570	1435
BIOM03		2601	2545	8217	4769	5786	4530	2147	3498	4673	2678	5403	5031	2743	2052	1895
BIOM01		2306	2122	6620	3868	5233	3765	2354	3054	3923	2295	4849	4172	2816	1751	1658
BIOM03		2918	2685	7674	4699	6263	4622	2781	3588	5065	2876	5563	5552	2804	2130	2064
BIOM01		593	564	1744	1068	1486	1007	564	744	1143	565	1212	1081	646	455	399
BIOM02		588	595	1875	1101	1489	985	621	824	1133	641	1165	1104	643	447	393
BIOM03		677	699	2077	1236	1663	1321	751	955	1214	759	1466	1282	744	489	485
BIOMA2		1007	1020	3229	1846	2384	1635	885	1365	1781	1016	1924	2059	1046	769	735

SA-14-2195-4

Appendix V:

Fragmentograms of aromatic
compounds with quantification tables
and molecular ratios

MS-ARO amounts

Sample name:		File name	File path:	Project	Misc.info.(ORG.ID.)	Operator:	Method:	Date analyzed:	Seq.#
2500	mud	2500MUD.D	C:\HPCHEM\1\DATA\ARO\B650723A\	347292		JKB,GN	MSD_ARO1		
2871.75	COCH	2871_75.D	C:\HPCHEM\1\DATA\ARO\C650723A\	347292		JKB,GN	MSD_ARO1		
2877.25	COCH	2877_25.D	C:\HPCHEM\1\DATA\ARO\C650723A\	347292		JKB,GN	MSD_ARO1		
3260.75	COCH	3260_75.D	C:\HPCHEM\1\DATA\ARO\C650723A\	347292		JKB,GN	MSD_ARO1		
3500	mud	3500MUD.D	C:\HPCHEM\1\DATA\ARO\B650723A\	347292		JKB,GN	MSD_ARO1		
3830	DC	3830DC.D	C:\HPCHEM\1\DATA\ARO\C650723A\	347292		JKB,GN	MSD_ARO1		
3840	DC	3840DC.D	C:\HPCHEM\1\DATA\ARO\C650723A\	347292		JKB,GN	MSD_ARO1		
3870	DC	3870DC.D	C:\HPCHEM\1\DATA\ARO\C650723A\	347292		JKB,GN	MSD_ARO1		
3900	DC	3900DC.D	C:\HPCHEM\1\DATA\ARO\C650723A\	347292		JKB,GN	MSD_ARO1		
3930	DC	3930DC.D	C:\HPCHEM\1\DATA\ARO\C650723A\	347292		JKB,GN	MSD_ARO1		
3960	DC	3960DC.D	C:\HPCHEM\1\DATA\ARO\C650723A\	347292		JKB,GN	MSD_ARO1		
ANCO208B		ANCO208B.D	C:\HPCHEM\1\DATA\ARO\B650723A\	347292		JKB,GN	MSD_ARO1		

MS-ARO amounts

Sample name:	d8 N	d10 P	d12 C	C13 AI	C14 AI	C15 AI	C16 AI	C17 AI	C18 AI	C19 AI	C20 AI	C21 AI	C22 AI	C23 AI	C30AI	C31 AI	N	2-MN	1-MN
2500	10	10	10	8	22	5	9	13	12	8	10	10	13	17	5	8	10	15	7
2871.75	94	94	94	5	16	13	6	7	21	8	28	10	19	21	15	12	123	97	87
2877.25	19	19	19	8	8	46	31	112	195	71	93	165	70	157	206	114	77	82	126
3260.75	16	16	16	18	19	15	12	92	104	155	51	54	52	85	65	16	27	6343	5572
3500	233	233	233	6	83	9	14	16	17	13	23	7	8	12	7	9	254	286	130
3830	238	238	238	8	6	5	13	10	17	7	11	10	12	11	37	11	135	225	180
3840	27	27	27	15	32	7	5	26	140	108	60	48	24	21	98	31	129	1295	2077
3870	8	8	8	20	37	14	10	5	21	27	9	26	7	19	119	38	22	145	205
3900	10	10	10	15	9	15	14	7	17	5	11	16	18	16	238	80	48	277	372
3930	11	11	11	18	10	8	23	14	24	21	11	16	15	21	430	52	143	1627	1857
3960	14	14	14	15	25	11	10	9	9	19	18	25	12	22	71	28	69	612	656
ANCO208B	19	19	19	7	62	12	23	89	29	11	32	21	11	17	16	11	23	30	23

MS-ARO amounts

Sample name:	2-EN	1-EN	2,6+ 2,7-DMN	1,3+1,7-DMN	1,6-DMN	2,3+1,4-DMN	1,5-DMN	1,2-DMN	C3- N	C3-N	1,3,7-TMN	1,3,6-TMN	1,3,5+1,4,6-TMN
2500	10	13	10	7	1	16	7	16	11	15	8	10	9
2871.75	17	77	43	69	69	120	51	94	129	148	129	110	64
2877.25	376	270	6585	12169	8590	8873	2869	5163	2098	1734	22895	31124	27003
3260.75	1117	620	16173	24936	17301	20474	4191	10879	1644	951	11458	16411	14531
3500	115	161	277	115	230	138	184	253	273	373	272	148	370
3830	120	180	160	319	319	100	60	140	322	969	2738	278	2310
3840	182	126	1416	3017	2724	2472	964	2194	470	188	791	1581	2018
3870	31	13	116	209	200	84	71	66	15	36	55	111	152
3900	52	19	183	304	294	144	124	90	17	34	75	148	178
3930	140	80	751	1324	1333	530	413	344	55	78	271	465	573
3960	71	53	395	638	595	290	204	173	106	38	131	260	278
ANCO208B	14	19	8	19	19	16	21	27	20	27	66	71	93

MS-ARO amounts

Sample name:	2,3,6-TMN	1,6,7+1,2,7-TMN	1,2,6-TMN	1,2,4-TMN	1,2,5-TMN	BP	3-MBP	4-MBP	C2-BP	C2-BP	C2-BP	F	C1-F	C1-F	1-MF
2500	18	9	7	17	20	7	4	4	3	5	5	8	7	3	8
2871.75	46	468	266	138	147	81	250	125	782	231	363	954	1332	6363	380
2877.25	43315	37846	30439	3678	38946	6227	79216	34954	59047	54275	43091	87917	53389	150401	24974
3260.75	30040	29123	15080	2461	21151	67532	154427	69009	61862	65974	47961	93110	33947	115785	13267
3500	296	272	198	272	271	202	219	101	219	269	202	413	391	1239	283
3830	3850	4407	2225	193	4147	131	306	189	23118	11027	20685	5669	8764	35523	4351
3840	3381	4807	2237	882	4065	15655	15607	8018	16954	21198	21258	91724	28425	139611	16314
3870	77	78	61	124	92	92	83	34	111	127	99	1080	220	1679	118
3900	87	104	96	60	112	80	76	47	94	40	51	202	71	270	24
3930	481	451	289	184	457	710	606	250	556	703	732	4261	1019	5269	501
3960	205	213	176	98	205	441	374	167	287	770	641	6390	1919	8615	576
ANCO208B	51	57	53	31	77	21	29	51	51	30	119	23	25	183	68

MS-ARO amounts

Sample name:	DBT	4-MDBT	3+2-MDBT	1-MDBT	P	3-MP	2-MP	9-MP	1-MP	2EP+9EP+3,6-DMP	1EP	2,6+2,7+3,5-DMP	1,3+2,10+3,9+3,10-DMP
2500	0	0	0	0	0	0	0	0	0	0	0	0	0
2871.75	2	1	0	0	227	140	133	111	113	22	32	17	76
2877.25	3	3	1	0	120	59	55	46	37	10	11	4	25
3260.75	10	10	4	3	171	75	73	100	72	18	18	8	70
3500	0	0	0	0	15	3	4	4	3	1	1	0	3
3830	381	125	29	51	1301	184	215	474	379	45	35	19	213
3840	103	79	29	22	699	243	314	635	562	60	59	32	367
3870	11	5	2	1	274	66	87	170	174	7	4	10	73
3900	22	17	6	4	372	76	103	213	242	9	12	9	93
3930	26	16	7	5	543	147	194	331	360	20	27	16	153
3960	13	5	3	1	719	169	242	388	404	17	29	19	163
ANCO208B	0	0	0	0	0	0	0	0	0	0	0	0	0

MS-ARO amounts

Sample name:	1,6+2,5+2,9-DMP	1,7-DMP	2,3-DMP	1,9+4,9+4,10-DMP	1,8-DMP	Retene	20TA	21TA	S26TA	R26TA/S27TA	S28TA	R27TA	R28TA
2500	0	0	0	0	0	0	0.15	0.00	0.00	0.00	0.00	0.00	0.07
2871.75	44	50	46	24	10	14	0.08	0.14	0.07	0.01	0.03	0.01	0.02
2877.25	12	10	5	6	2	27	0.69	0.51	0.38	1.24	0.48	0.51	0.39
3260.75	36	37	13	21	9	34	1.50	1.26	0.27	0.84	0.42	0.41	0.44
3500	1	1	1	1	0	1	0.68	0.03	0.01	0.01	0.02	0.01	0.04
3830	108	116	32	85	44	33	7.37	4.24	1.10	3.58	1.40	1.49	2.28
3840	209	208	55	159	91	11	2.05	4.75	0.03	0.09	0.02	0.01	0.05
3870	43	51	27	45	24	2	0.07	3.61	0.01	0.02	0.00	0.01	0.01
3900	61	68	46	55	31	8	0.03	5.62	0.06	0.02	0.03	0.02	0.02
3930	86	132	44	70	38	5	0.09	4.36	0.02	0.01	0.02	0.01	0.02
3960	102	169	63	86	43	4	0.25	3.25	0.01	0.02	0.01	0.00	0.01
ANCO208B	0	0	0	0	0	0	0.23	0.02	0.00	0.01	0.00	0.01	0.20

P#	Rt	Ion m/z	Compound	Height	Amount
Int.Std.(if added):					ng/mg
14	14,48	136.00	d8 N	9	10
46	32,33	188.00	d10 P	17882	10
66	47,72	240.00	d12 C	29943	10
ARYL ISOPRENOIDS					
1	21,52	133	C13 AI	8	
2	23,56	133	C14 AI	22	
3	26,85	133	C15 AI	5	
4	29,33	133	C16 AI	9	
5	31,98	133	C17 AI	13	
6	34,39	133	C18 AI	12	
7	36,02	133	C19 AI	8	
8	38,64	133	C20 AI	10	
9	40,69	133	C21 AI	10	
10	42,78	133	C22 AI	13	
11	44,81	133	C23 AI	17	
12	56,06	133	C30AI	5	
13	57,90	133	C31 AI	8	
NAPHTALENES					
15	14,52	128	N	10	10
16	18,21	142	2-MN	11	15
17	18,85	142	1-MN	5	7
18	21,45	156	2-EN	8	10
19	21,62	156	1-EN	11	13
20	21,84	156	2,6+ 2,7-DMN	8	10
21	22,30	156	1,3+1,7-DMN	6	7
22	22,38	156	1,6-DMN	1	1
23	22,90	156	2,3+1,4-DMN	13	16
24	23,01	156	1,5-DMN	6	7
25	23,32	156	1,2-DMN	13	16
29	25,21	170	C3- N	8	11
30	25,43	170	C3-N	11	15
31	25,48	170	1,3,7-TMN	6	8
32	25,66	170	1,3,6-TMN	8	10
33	26,16	170	1,3,5+1,4,6-TMN	7	9
34	26,16	170	2,3,6-TMN	14	18
35	26,63	170	1,6,7+1,2,7-TMN	7	9
36	26,70	170	1,2,6-TMN	5	7
37	27,09	170	1,2,4-TMN	13	17
38	27,39	170	1,2,5-TMN	15	20
BIPHENYLS					
26	20,87	154	BP	8	7
27	24,27	168	3-MBP	5	4
28	24,55	168	4-MBP	4	4
39	28,08	182	C2-BP	3	3
40	28,50	182	C2-BP	6	5
41	28,83	182	C2-BP	6	5
AROMATICS					
File name (sample): 2500MUD.D					
File path: C:\HPCHEM\1\DATA\ARO\B650723A\					
Misc information:					
Sample name:					
Operator: JKB,GN					
Method: MSD_ARO1					
Date analyzed: 08.Aug.94					
P#	Rt	Ion m/z	Compound	Height	Amount
FLUORENES					ng/mg
42	27,20	166	F	7	8
43	30,37	180	C1 F	6	7
44	30,68	180	C1-F	3	3
45	30,96	180	1-MF	7	8
DIBENZOTHIOPHENES					
47	31,74	184	DBT	77	0
48	34,34	198	4-MDBT	218	0
49	34,86	198	3+2-MDBT	89	0
50	35,43	198	1-MDBT	83	0
PHENANTRENES					
51	32,45	178	P	765	0
52	35,36	192	3-MP	253	0
53	35,50	192	2-MP	301	0
54	35,99	192	9-MP	396	0
55	36,11	192	1-MP	294	0
57	38,05	206	2EP:9EP+3,6 DMP	68	0
58	38,28	206	1EP	91	0
59	38,37	206	2,6+2,7+3,5-DMP	41	0
60	38,71	206	1,3+2,10+3,9+3,10-DMP	385	0
61	38,87	206	1,6+2,5+2,9-DMP	187	0
62	39,01	206	1,7-DMP	196	0
63	39,15	206	2,3-DMP	49	0
64	39,27	206	1,9+4,9+4,10-DMP	110	0
65	39,58	206	1,8-DMP	59	0
RETENE					
56	42,83	219	Retene	246	0
TRIAMOMATIC STEROIDS					
67	47,26	231	20TA	2329	0,1
68	49,13	231	21TA	40	0,0
69	55,89	231	S26TA	5	0,0
70	57,17	231	R26TA/S27TA	31	0,0
71	58,12	231	S28TA	11	0,0
72	58,63	231	R27TA	38	0,0
73	59,84	231	R28TA	1165	0,1



Research Centre documentation

Norsk Hydro a.s Bergen

1 Doc. type <input type="checkbox"/> Agreement <input type="checkbox"/> Amendment <input checked="" type="checkbox"/> Report <input type="checkbox"/> Other			Exploration and Production	
2 Storage <input type="checkbox"/> 2 years <input type="checkbox"/> 5 years <input checked="" type="checkbox"/> Permanent archives			4 Doc id No R-066034	
3. Grading <input type="checkbox"/> Open <input type="checkbox"/> Internal <input checked="" type="checkbox"/> Confidential <input type="checkbox"/> Strictly conf.			5 Copy no	
6 Distribution J. Augustson, HA (12) Arkiv, F-BG (2) A. Steen		7 Title Rock Eval screening, Well 6507/2-3 PA-011 1633-1		
8 Summary/Conclusion/Recommendation Rock Eval /TOC data on washed/crushed DC-samples and a selection of extracted samples are reported. The analysed interval are 1500 - 3972(TD) m. The samples are prepared and analysed at Norsk Hydro Research Centre, Bergen. All analysis and extractions are according to the Norwegian Industry Guide to Organic Geochemical Analysis. The Anco-208 mud-system is used down to 3060m. These mud additives are known to add background signals to RockEval/TOC analysis.				
9 Keywords Petroleum geochemistry, source rock, source rock, rockeval, maturity, mud additives				
10 Pages appendix		11 Amendment No	12 Revision No	13 Revisions date
14 Quadrant/Block well 6507/2-3		15 Project No 34729-1	16 Licence No	17 Date 08.08.94
18 Unit		Bas.mod./Pet.geochemistry		
19-21 Department/project		Geo-section		
22-24 Author(s)		A. Steen, <i>AS</i> F. Lumperdean		
25-27 Controlled		E. Nysother	Nys 9/8-94	
28-30 Verified				
31-33 Approved				

Postal address
N-5020 Bergen
Norway

Office Address
Sandsliveien 90
Sandslø Bergen

Telephone
National 05 99 50 00
Internat +47 5 99 50 00

Telefax
National 05 99 66 00
Internat +47 5 99 66 00

Telex
40632 hydro n

CONTENTS

1. Results

Table 1.1. Rock-Eval /TOC data of washed/crushed DC-samples

Figure 1.1.1. Tmax, S1, S2 TOC, HI, PI versus depth

Figure 1.1.2. Tmax versus HI, Formation legends

Figure 1.1.3. TOC versus S2, Formation legends

Figure 1.1.4. PI versus S2, Formation legends

Table 1.2. Rock-Eval/TOC data on extracted samples

Figure 1.2.1. Unextracted S2 and extracted S2 versus depth

Figure 1.2.2. Tmax versus HI on extracted samples, Formation legends.

2. Appendix I

Rock-Eval pyrograms of selected samples before and after extraction.

The 1st pyrogram (1600m) is annotated.

RESULTS

Table 1 1 Rock-Eval /TOC data of washed/crushed DC-samples

Figure 1 1 1. Tmax, S1, S2 TOC, HI, PI versus depth

Figure 1 1.2 Tmax versus HI, Formation legends

Figure 1 1 3 TOC versus S2, Formation legends

Figure 1 1 4 PI versus S2, Formation legends

Table 1.2. Rock-Eval/TOC data on extracted samples

Figure 1.2.1. Unextracted S2 and extracted S2 versus depth

Figure 1.2.2. Tmax versus HI on extracted samples, Formation legends.

TABLE: 1.1

Petroleum Geochemistry Group
Research Centre Bergen



ROCK EVAL SCREENING DATA, WELL NOR:6507/2-3

Depth (m)	Group/Fm.	Lithology	Type	Tmax DegC	S1 kg/t	S2 kg/t	TOC %	HI	PI	Analysing Company
1500.00		BULK/MUD_AD	DC	363	0.3	1.9	0.8	251	0.15	NORSK HYDRO
1520.00		BULK/MUD_AD	DC	365	0.4	1.9	0.8	240	0.17	NORSK HYDRO
1540.00		BULK/MUD_AD	DC	360	0.9	3.6	1.1	325	0.20	NORSK HYDRO
1560.00		BULK/MUD_AD	DC	361	1.0	3.8	1.3	302	0.20	NORSK HYDRO
1580.00		BULK/MUD_AD	DC	365	1.3	4.8	1.5	310	0.22	NORSK HYDRO
1600.00		BULK/MUD_AD	DC	368	1.5	5.1	1.8	291	0.23	NORSK HYDRO
1620.00		BULK/MUD_AD	DC	372	1.8	5.7	1.9	294	0.24	NORSK HYDRO
1640.00		BULK/MUD_AD	DC	368	1.6	5.5	1.9	291	0.22	NORSK HYDRO
1660.00		BULK/MUD_AD	DC	367	1.7	5.8	2.0	290	0.23	NORSK HYDRO
1680.00		BULK/MUD_AD	DC	366	1.5	5.2	1.8	286	0.23	NORSK HYDRO
1700.00		BULK/MUD_AD	DC	370	1.8	5.2	1.8	297	0.26	NORSK HYDRO
1720.00		BULK/MUD_AD	DC	370	1.9	5.4	2.0	270	0.26	NORSK HYDRO
1740.00		BULK/MUD_AD	DC							NORSK HYDRO
1740.00		BULK/MUD_AD	DC	377	1.3	5.6	2.2	254	0.19	NORSK HYDRO
1760.00		BULK/MUD_AD	DC	373	1.5	5.7	2.2	256	0.21	NORSK HYDRO
1780.00		BULK/MUD_AD	DC	360	1.6	5.6	2.3	240	0.23	NORSK HYDRO
1800.00		BULK/MUD_AD	DC	353	1.3	4.5	1.6	289	0.22	NORSK HYDRO
1820.00		BULK/MUD_AD	DC	357	2.1	5.6	1.3	429	0.27	NORSK HYDRO
1840.00		BULK/MUD_AD	DC	349	2.2	5.5	1.0	538	0.28	NORSK HYDRO
1860.00		BULK/MUD_AD	DC	356	2.5	8.4	1.2	720	0.23	NORSK HYDRO
1880.00		BULK/MUD_AD	DC	357	1.4	6.7	0.9	737	0.17	NORSK HYDRO
1900.00		BULK/MUD_AD	DC	358	1.3	5.8	0.9	662	0.19	NORSK HYDRO
1920.00		BULK/MUD_AD	DC	350	1.1	4.0	0.7	573	0.22	NORSK HYDRO
1940.00		BULK/MUD_AD	DC	352	1.8	4.5	1.0	425	0.29	NORSK HYDRO
1960.00		BULK/MUD_AD	DC	349	2.0	3.8	1.0	375	0.34	NORSK HYDRO
1980.00		BULK/MUD_AD	DC	342	2.2	3.6	1.3	271	0.38	NORSK HYDRO
2000.00		BULK/MUD_AD	DC	347	1.9	3.4	1.5	231	0.36	NORSK HYDRO
2010.00		BULK/MUD_AD	DC	353	1.5	3.7	1.0	349	0.29	NORSK HYDRO
2020.00		BULK/MUD_AD	DC	315	0.2	1.0	0.3	316	0.14	NORSK HYDRO
2030.00		BULK/MUD_AD	DC	360	0.2	1.5	0.6	270	0.13	NORSK HYDRO
2040.00		BULK/MUD_AD	DC	350	1.2	3.0	0.9	319	0.29	NORSK HYDRO
2050.00		BULK/MUD_AD	DC	354	1.1	3.5	0.9	380	0.23	NORSK HYDRO
2060.00		BULK/MUD_AD	DC	348	0.7	2.2	0.7	299	0.25	NORSK HYDRO

TABLE: 1.1

Petroleum Geochemistry Group
Research Centre Bergen



HYDRO

ROCK EVAL SCREENING DATA, WELL NOR:6507/2-3 (cont'd)

Depth (m)	Group/Fm.	Lithology	Type	Tmax DegC	S1 kg/t	S2 kg/t	TOC %	HI	PI	Analysing Company
2070.00		BULK/MUD_AD	DC	346	0.9	1.9	0.6	317	0.31	NORSK HYDRO
2080.00		BULK/MUD_AD	DC	347	0.6	1.9	0.6	292	0.25	NORSK HYDRO
2090.00		BULK/MUD_AD	DC	350	1.0	2.8	0.8	345	0.26	NORSK HYDRO
2100.00		BULK/MUD_AD	DC	352	0.5	1.9	0.7	268	0.22	NORSK HYDRO
2110.00		BULK/MUD_AD	DC	348	1.3	3.2	0.9	348	0.28	NORSK HYDRO
2120.00		BULK/MUD_AD	DC	347	1.1	3.0	0.9	330	0.27	NORSK HYDRO
2130.00		BULK/MUD_AD	DC	348	1.1	3.0	0.9	323	0.27	NORSK HYDRO
2140.00		BULK/MUD_AD	DC	351	0.6	2.4	0.8	300	0.21	NORSK HYDRO
2145.00		BULK/MUD_AD	DC	345	1.2	3.1	1.0	308	0.29	NORSK HYDRO
2155.00		BULK/MUD_AD	DC	344	1.1	2.3	0.9	250	0.33	NORSK HYDRO
2160.00		BULK/MUD_AD	DC	351	0.3	1.3	0.7	186	0.21	NORSK HYDRO
2170.00		BULK/MUD_AD	DC	348	0.7	2.0	0.8	254	0.26	NORSK HYDRO
2180.00		BULK/MUD_AD	DC	351	1.0	2.8	0.9	326	0.26	NORSK HYDRO
2190.00		BULK/MUD_AD	DC	355	0.6	2.8	0.9	315	0.19	NORSK HYDRO
2200.00		BULK/MUD_AD	DC	353	0.7	3.2	1.0	325	0.19	NORSK HYDRO
2210.00		BULK/MUD_AD	DC	350	0.9	3.3	1.0	317	0.22	NORSK HYDRO
2220.00		BULK/MUD_AD	DC	354	0.9	3.6	1.0	341	0.19	NORSK HYDRO
2230.00		BULK/MUD_AD	DC	352	1.2	4.2	1.1	368	0.22	NORSK HYDRO
2240.00		BULK/MUD_AD	DC	351	1.2	4.0	1.1	354	0.22	NORSK HYDRO
2250.00		BULK/MUD_AD	DC	358	0.7	3.4	1.1	318	0.17	NORSK HYDRO
2260.00		BULK/MUD_AD	DC	355	0.6	3.0	1.0	288	0.16	NORSK HYDRO
2270.00		BULK/MUD_AD	DC	354	1.0	3.8	1.1	338	0.20	NORSK HYDRO
2280.00	—	BULK/MUD_AD	DC	351	1.0	3.5	1.1	319	0.22	NORSK HYDRO
2290.00		BULK/MUD_AD	DC	353	1.1	4.1	1.1	356	0.22	NORSK HYDRO
2300.00		BULK/MUD_AD	DC	360	0.6	3.7	1.0	370	0.15	NORSK HYDRO
2310.00		BULK/MUD_AD	DC	356	0.9	3.7	1.0	356	0.19	NORSK HYDRO
2320.00		BULK/MUD_AD	DC	358	0.6	3.2	1.0	315	0.17	NORSK HYDRO
2330.00		BULK/MUD_AD	DC	357	0.8	3.7	1.1	343	0.18	NORSK HYDRO
2340.00		BULK/MUD_AD	DC	356	0.8	3.4	1.1	315	0.18	NORSK HYDRO
2350.00		BULK/MUD_AD	DC	352	0.6	2.3	1.0	231	0.19	NORSK HYDRO
2360.00		BULK/MUD_AD	DC	352	0.5	2.6	1.1	243	0.17	NORSK HYDRO
2370.00		BULK/MUD_AD	DC	352	1.2	3.8	1.3	294	0.24	NORSK HYDRO
2380.00		BULK/MUD_AD	DC	355	0.8	3.3	1.2	287	0.20	NORSK HYDRO

TABLE: 1.1

Petroleum Geochemistry Group
Research Centre Bergen



HYDRO

ROCK EVAL SCREENING DATA, WELL NOR:6507/2-3 (cont'd)

Depth (m)	Group/Fm.	Lithology	Type	Tmax DegC	S1 kg/t	S2 kg/t	TOC %	HI	PI	Analysing Company
2390.00		BULK/MUD_AD	DC	358	0.8	3.5	1.2	289	0.18	NORSK HYDRO
2400.00		BULK/MUD_AD	DC	354	0.8	3.0	1.3	238	0.20	NORSK HYDRO
2410.00		BULK/MUD_AD	DC	355	0.5	2.7	1.2	219	0.16	NORSK HYDRO
2420.00		BULK/MUD_AD	DC	353	0.8	3.2	1.2	258	0.19	NORSK HYDRO
2430.00		BULK/MUD_AD	DC	355	0.6	2.7	1.2	228	0.17	NORSK HYDRO
2440.00		BULK/MUD_AD	DC	351	0.6	2.4	1.1	214	0.19	NORSK HYDRO
2450.00		BULK/MUD_AD	DC	356	0.7	2.8	1.2	235	0.19	NORSK HYDRO
2460.00		BULK/MUD_AD	DC	353	0.5	2.3	1.1	219	0.18	NORSK HYDRO
2470.00		BULK/MUD_AD	DC	354	0.6	2.7	1.1	250	0.19	NORSK HYDRO
2480.00		BULK/MUD_AD	DC	358	0.9	3.5	1.2	299	0.21	NORSK HYDRO
2490.00		BULK/MUD_AD	DC	353	0.8	3.0	1.1	272	0.20	NORSK HYDRO
2500.00		BULK/MUD_AD	DC	353	0.7	2.8	1.1	250	0.20	NORSK HYDRO
2510.00		BULK/MUD_AD	DC	359	0.9	3.4	1.2	292	0.20	NORSK HYDRO
2520.00		BULK/MUD_AD	DC	357	0.7	3.2	1.1	278	0.19	NORSK HYDRO
2530.00		BULK/MUD_AD	DC	356	0.7	3.2	1.1	284	0.19	NORSK HYDRO
2540.00		BULK/MUD_AD	DC	354	0.5	2.5	1.0	240	0.18	NORSK HYDRO
2550.00		BULK/MUD_AD	DC	353	0.5	2.3	1.0	224	0.18	NORSK HYDRO
2560.00		BULK/MUD_AD	DC	354	0.5	2.4	1.0	230	0.17	NORSK HYDRO
2570.00		BULK/MUD_AD	DC	353	0.8	3.0	1.1	269	0.21	NORSK HYDRO
2580.00		BULK/MUD_AD	DC	359	0.6	3.1	1.1	289	0.16	NORSK HYDRO
2590.00		BULK/MUD_AD	DC	356	0.6	2.7	1.0	260	0.17	NORSK HYDRO
2600.00		BULK/MUD_AD	DC	355	0.7	3.0	1.1	281	0.20	NORSK HYDRO
2610.00		BULK/MUD_AD	DC	356	0.7	3.0	1.1	274	0.19	NORSK HYDRO
2620.00		BULK/MUD_AD	DC	360	0.7	3.2	1.1	284	0.18	NORSK HYDRO
2630.00		BULK/MUD_AD	DC	390	0.4	2.0	1.0	198	0.15	NORSK HYDRO
2640.00		BULK/MUD_AD	DC	355	0.7	3.1	1.1	270	0.18	NORSK HYDRO
2650.00		BULK/MUD_AD	DC	352	0.5	2.1	1.0	211	0.19	NORSK HYDRO
2660.00		BULK/MUD_AD	DC	357	0.7	3.1	1.1	280	0.18	NORSK HYDRO
2670.00		BULK/MUD_AD	DC	355	0.7	2.9	1.2	247	0.20	NORSK HYDRO
2680.00		BULK/MUD_AD	DC	356	0.8	3.5	1.3	276	0.18	NORSK HYDRO
2690.00		BULK/MUD_AD	DC	356	0.6	2.7	1.1	244	0.18	NORSK HYDRO
2700.00		BULK/MUD_AD	DC	353	0.6	2.3	1.2	197	0.20	NORSK HYDRO
2710.00		BULK/MUD_AD	DC	355	1.1	3.2	1.2	270	0.25	NORSK HYDRO

TABLE: 1.1

Petroleum Geochemistry Group
Research Centre Bergen



HYDRO

ROCK EVAL SCREENING DATA, WELL NOR:6507/2-3 (cont'd)

Depth (m)	Group/Fm.	Lithology	Type	Tmax DegC	S1 kg/t	S2 kg/t	TOC %	HI	PI	Analysing Company
2720.00		BULK/MUD_AD	DC							NORSK HYDRO
2720.00		BULK/MUD_AD	DC	356	0.6	2.9	1.2	248	0.18	NORSK HYDRO
2730.00		BULK/MUD_AD	DC							NORSK HYDRO
2730.00		BULK/MUD_AD	DC	353	0.4	1.6	1.1	153	0.21	NORSK HYDRO
2740.00		BULK/MUD_AD	DC	354	0.7	2.3	1.2	189	0.22	NORSK HYDRO
2750.00		BULK/MUD_AD	DC	355	0.6	2.1	1.1	197	0.21	NORSK HYDRO
2760.00		BULK/MUD_AD	DC	356	0.8	3.0	1.3	242	0.22	NORSK HYDRO
2770.00		BULK/MUD_AD	DC	354	0.6	2.5	1.1	223	0.20	NORSK HYDRO
2780.00		BULK/MUD_AD	DC	356	0.5	2.3	1.1	210	0.18	NORSK HYDRO
2790.00		BULK/MUD_AD	DC	355	0.6	2.5	1.1	217	0.18	NORSK HYDRO
2800.00		BULK/MUD_AD	DC	353	0.6	2.3	1.1	204	0.20	NORSK HYDRO
2810.00		BULK/MUD_AD	DC	353	0.4	1.9	0.9	220	0.18	NORSK HYDRO
2820.00		BULK/MUD_AD	DC	359	0.9	2.7	1.1	253	0.24	NORSK HYDRO
2830.00		BULK/MUD_AD	DC	356	0.5	2.5	1.0	240	0.17	NORSK HYDRO
2840.00		BULK/MUD_AD	DC	358	0.6	2.4	1.1	223	0.18	NORSK HYDRO
2900.00		BULK/MUD_AD	DC	353	0.6	2.2	1.0	219	0.22	NORSK HYDRO
2910.00		BULK/MUD_AD	DC	352	0.5	1.8	1.0	188	0.20	NORSK HYDRO
2920.00		BULK/MUD_AD	DC	351	0.3	1.5	0.9	163	0.18	NORSK HYDRO
2930.00		BULK/MUD_AD	DC	352	0.2	1.3	0.9	150	0.15	NORSK HYDRO
2940.00		BULK/MUD_AD	DC	352	0.4	1.5	0.9	167	0.20	NORSK HYDRO
2950.00		BULK/MUD_AD	DC	352	1.2	1.9	1.0	193	0.38	NORSK HYDRO
2960.00		BULK/MUD_AD	DC	354	0.4	2.0	1.0	199	0.18	NORSK HYDRO
2970.00		BULK/MUD_AD	DC	353	0.8	2.7	0.9	297	0.22	NORSK HYDRO
2980.00		BULK/MUD_AD	DC	353	0.5	1.9	1.0	202	0.20	NORSK HYDRO
2990.00		BULK/MUD_AD	DC	353	0.5	2.0	1.0	205	0.19	NORSK HYDRO
3000.00		BULK/MUD_AD	DC							NORSK HYDRO
3000.00		BULK/MUD_AD	DC	353	0.5	2.2	1.1	192	0.19	NORSK HYDRO
3010.00		BULK/MUD_AD	DC							NORSK HYDRO
3010.00		BULK/MUD_AD	DC	350	0.5	1.8	1.1	172	0.22	NORSK HYDRO
3020.00		BULK/MUD_AD	DC							NORSK HYDRO
3020.00		BULK/MUD_AD	DC	350	0.6	2.1	1.2	179	0.21	NORSK HYDRO
3030.00		BULK/MUD_AD	DC							NORSK HYDRO
3030.00		BULK/MUD_AD	DC	351	0.6	2.4	1.2	197	0.22	NORSK HYDRO



TABLE: 1.1

ROCK EVAL SCREENING DATA, WELL NOR:6507/2-3 (cont'd)

Depth (m)	Group/Fm.	Lithology	Type	Tmax DegC	S1 kg/t	S2 kg/t	TOC %	HI	PI	Analysing Company
3150.00		BULK	DC	437	0.2	1.2	1.1	110	0.11	NORSK HYDRO
3155.00		BULK	DC							NORSK HYDRO
3155.00		BULK	DC	438	0.1	1.0	1.1	93	0.08	NORSK HYDRO
3160.00		BULK	DC							NORSK HYDRO
3160.00		BULK	DC	437	0.2	1.3	1.1	120	0.10	NORSK HYDRO
3165.00		BULK	DC							NORSK HYDRO
3165.00		BULK	DC	438	0.2	1.3	1.1	113	0.13	NORSK HYDRO
3170.00		BULK	DC							NORSK HYDRO
3170.00		BULK	DC	435	0.2	1.2	1.0	117	0.13	NORSK HYDRO
3175.00		BULK	DC							NORSK HYDRO
3175.00		BULK	DC	438	0.2	1.5	1.2	131	0.13	NORSK HYDRO
3180.00		BULK	DC							NORSK HYDRO
3180.00		BULK	DC	437	0.2	1.2	1.0	111	0.11	NORSK HYDRO
3185.00		BULK	DC							NORSK HYDRO
3185.00		BULK	DC	437	0.2	1.1	1.0	110	0.16	NORSK HYDRO
3190.00		BULK	DC							NORSK HYDRO
3190.00		BULK	DC	436	0.2	1.1	1.0	109	0.14	NORSK HYDRO
3195.00		BULK	DC							NORSK HYDRO
3195.00		BULK	DC	435	0.1	0.9	0.9	96	0.13	NORSK HYDRO
3200.00		BULK	DC							NORSK HYDRO
3200.00		BULK	DC	438	0.1	0.8	0.9	82	0.15	NORSK HYDRO
3205.00		BULK	DC	438	0.2	1.0	1.1	93	0.14	NORSK HYDRO
3210.00		BULK	DC	436	0.2	1.0	1.0	94	0.13	NORSK HYDRO
3215.00		BULK	DC	437	0.1	1.1	1.1	99	0.10	NORSK HYDRO
3220.00		BULK	DC	437	0.2	1.1	1.2	93	0.12	NORSK HYDRO
3225.00		BULK	DC	438	0.2	1.4	1.3	110	0.12	NORSK HYDRO
3230.00		BULK	DC	439	0.3	1.4	1.2	116	0.15	NORSK HYDRO
3235.00		BULK	DC	439	0.3	1.6	1.2	128	0.17	NORSK HYDRO
3240.00		BULK	DC	438	0.2	1.5	1.3	119	0.13	NORSK HYDRO
3245.00		BULK	DC	438	0.3	1.6	1.3	122	0.14	NORSK HYDRO
3250.00		BULK	DC	439	0.3	1.4	1.3	113	0.15	NORSK HYDRO
3270.00		BULK	DC	436	0.2	1.2	1.0	110	0.16	NORSK HYDRO
3275.00		BULK	DC	438	0.3	1.2	1.1	112	0.17	NORSK HYDRO

TABLE: 1.1

Petroleum Geochemistry Group
Research Centre Bergen



HYDRO

ROCK EVAL SCREENING DATA, WELL NOR:6507/2-3 (cont'd)

Depth (m)	Group/Fm.	Lithology	Type	Tmax DegC	S1 kg/t	S2 kg/t	TOC %	HI	PI	Analysing Company
3280.00		BULK	DC	436	0.3	1.1	1.1	105	0.19	NORSK HYDRO
3285.00		BULK	DC	438	0.2	1.3	1.1	117	0.15	NORSK HYDRO
3290.00		BULK	DC	437	0.2	1.3	1.1	110	0.16	NORSK HYDRO
3295.00		BULK	DC	439	0.3	1.4	1.2	118	0.15	NORSK HYDRO
3300.00		BULK	DC	437	0.3	1.2	1.1	106	0.19	NORSK HYDRO
3305.00		BULK	DC	439	0.3	1.3	1.1	116	0.17	NORSK HYDRO
3310.00		BULK	DC	439	0.2	1.3	1.2	108	0.13	NORSK HYDRO
3315.00		BULK	DC	439	0.2	1.3	1.2	108	0.13	NORSK HYDRO
3320.00		BULK	DC	438	0.1	1.0	1.1	89	0.11	NORSK HYDRO
3325.00		BULK	DC	438	0.1	1.0	1.1	87	0.12	NORSK HYDRO
3330.00		BULK	DC	437	0.1	1.1	1.1	97	0.11	NORSK HYDRO
3335.00		BULK	DC	436	0.2	1.0	1.1	88	0.16	NORSK HYDRO
3340.00		BULK	DC	437	0.2	0.7	0.9	75	0.17	NORSK HYDRO
3345.00		BULK	DC	396	0.1	0.3	0.8	44	0.20	NORSK HYDRO
3350.00		BULK	DC	393	0.2	0.4	0.9	42	0.28	NORSK HYDRO
3355.00		BULK	DC	417	0.2	0.4	1.0	41	0.33	NORSK HYDRO
3360.00		BULK	DC	419	0.2	0.4	1.0	40	0.34	NORSK HYDRO
3365.00		BULK	DC	390	0.2	0.4	1.0	40	0.32	NORSK HYDRO
3370.00		BULK	DC	370	0.3	0.4	1.0	38	0.40	NORSK HYDRO
3375.00		BULK	DC	414	0.2	0.5	1.1	42	0.34	NORSK HYDRO
3380.00		BULK	DC	438	0.2	0.4	0.9	47	0.35	NORSK HYDRO
3385.00		BULK	DC	399	0.2	0.5	1.2	41	0.32	NORSK HYDRO
3390.00		BULK	DC	436	0.3	0.8	1.4	60	0.26	NORSK HYDRO
3395.00		BULK	DC	401	0.2	0.7	1.3	55	0.21	NORSK HYDRO
3400.00		BULK	DC	400	0.2	0.8	1.2	70	0.21	NORSK HYDRO
3405.00		BULK	DC	437	0.3	0.8	1.3	67	0.23	NORSK HYDRO
3410.00		BULK	DC	437	0.2	1.0	1.3	79	0.17	NORSK HYDRO
3415.00		BULK	DC	432	0.2	1.4	1.4	96	0.13	NORSK HYDRO
3420.00		BULK	DC	437	0.2	0.8	1.2	61	0.18	NORSK HYDRO
3425.00		BULK	DC	438	0.1	0.5	1.2	42	0.18	NORSK HYDRO
3430.00		BULK	DC	400	0.1	0.4	1.2	38	0.13	NORSK HYDRO
3435.00		BULK	DC	397	0.1	0.4	1.2	36	0.14	NORSK HYDRO
3440.00		BULK	DC	422	0.1	0.4	1.2	37	0.10	NORSK HYDRO



TABLE: 1.1

ROCK EVAL SCREENING DATA, WELL NOR:6507/2-3 (cont'd)

Depth (m)	Group/Fm.	Lithology	Type	Tmax DegC	S1 kg/t	S2 kg/t	TOC %	HI	PI	Analysing Company
3445.00		BULK	DC	375	0.1	0.5	1.1	44	0.16	NORSK HYDRO
3450.00		BULK	DC	360	0.1	0.5	1.0	48	0.16	NORSK HYDRO
3455.00		BULK	DC	357	0.1	0.4	1.0	43	0.14	NORSK HYDRO
3460.00		BULK	DC	360	0.1	0.4	1.1	39	0.21	NORSK HYDRO
3462.00		BULK	DC	362	0.1	0.5	1.1	44	0.16	NORSK HYDRO
3470.00		BULK	DC	359	0.1	0.4	1.1	42	0.13	NORSK HYDRO
3475.00		BULK	DC	362	0.1	0.5	1.0	46	0.13	NORSK HYDRO
3480.00		BULK	DC	355	0.1	0.3	0.9	35	0.13	NORSK HYDRO
3485.00		BULK	DC	356	0.1	0.4	0.8	47	0.16	NORSK HYDRO
3490.00		BULK	DC	354	0.0	0.2	0.8	26	0.13	NORSK HYDRO
3495.00		BULK	DC	357	0.1	0.3	0.8	35	0.15	NORSK HYDRO
3500.00		BULK	DC	363	0.0	0.2	0.9	16	0.06	NORSK HYDRO
3505.00		BULK	DC	353	0.1	0.4	0.8	47	0.16	NORSK HYDRO
3510.00		BULK	DC	351	0.1	0.3	0.8	37	0.15	NORSK HYDRO
3515.00		BULK	DC	352	0.1	0.4	0.9	45	0.11	NORSK HYDRO
3520.00		BULK	DC	354	0.1	0.4	1.0	39	0.16	NORSK HYDRO
3525.00		BULK	DC	352	0.0	0.2	1.0	20	0.05	NORSK HYDRO
3530.00		BULK	DC	390	0.0	0.2	0.9	18	0.06	NORSK HYDRO
3535.00		BULK	DC	353	0.1	0.4	1.0	40	0.16	NORSK HYDRO
3540.00		BULK	DC	354	0.1	0.5	1.0	48	0.16	NORSK HYDRO
3545.00		BULK	DC	349	0.1	0.3	1.0	30	0.19	NORSK HYDRO
3550.00		BULK	DC	354	0.1	0.4	1.0	44	0.14	NORSK HYDRO
3555.00		BULK	DC	349	0.1	0.3	1.1	28	0.14	NORSK HYDRO
3560.00		BULK	DC	351	0.1	0.3	0.9	27	0.17	NORSK HYDRO
3565.00		BULK	DC	353	0.1	0.3	0.9	32	0.19	NORSK HYDRO
3570.00		BULK	DC	353	0.1	0.2	0.8	31	0.18	NORSK HYDRO
3575.00		BULK	DC	351	0.0	0.2	0.7	24	0.16	NORSK HYDRO
3580.00		BULK	DC	352	0.0	0.1	0.7	18	0.19	NORSK HYDRO
3585.00		BULK	DC	348	0.0	0.2	0.7	21	0.17	NORSK HYDRO
3590.00		BULK	DC	354	0.1	0.3	0.9	31	0.16	NORSK HYDRO
3595.00		BULK	DC	356	0.1	0.3	0.9	34	0.18	NORSK HYDRO
3600.00		BULK	DC	350	0.1	0.3	0.9	29	0.21	NORSK HYDRO
3605.00		BULK	DC	355	0.1	0.3	1.1	33	0.17	NORSK HYDRO

TABLE: 1.1

Petroleum Geochemistry Group
Research Centre Bergen



ROCK EVAL. SCREENING DATA, WELL NOR:6507/2-3 (cont'd)

Depth (m)	Group/Fm.	Lithology	Type	Tmax DegC	S1 kg/t	S2 kg/t	TOC %	HI	PI	Analysing Company
3610.00		BULK	DC	350	0.1	0.3	0.9	29	0.21	NORSK HYDRO
3615.00		BULK	DC	352	0.1	0.3	0.9	37	0.17	NORSK HYDRO
3620.00		BULK	DC	357	0.1	0.5	1.0	51	0.12	NORSK HYDRO
3625.00		BULK	DC	359	0.1	0.6	0.9	62	0.13	NORSK HYDRO
3630.00		BULK	DC	359	0.1	0.6	0.9	62	0.16	NORSK HYDRO
3635.00		BULK	DC	399	0.1	0.5	0.9	62	0.09	NORSK HYDRO
3640.00		BULK	DC	349	0.1	0.3	0.8	35	0.15	NORSK HYDRO
3645.00		BULK	DC	362	0.1	0.5	0.9	59	0.12	NORSK HYDRO
3650.00		BULK	DC	353	0.1	0.6	1.0	56	0.17	NORSK HYDRO
3655.00		BULK	DC	354	0.1	0.4	1.1	40	0.21	NORSK HYDRO
3660.00		BULK	DC	353	0.1	0.4	1.1	41	0.20	NORSK HYDRO
3665.00		BULK	DC	351	0.2	0.8	1.1	74	0.17	NORSK HYDRO
3670.00		BULK	DC	357	0.3	0.6	1.2	47	0.33	NORSK HYDRO
3675.00		BULK	DC	405	0.4	0.7	1.3	53	0.35	NORSK HYDRO
3680.00		BULK	DC	435	0.9	1.3	1.5	87	0.40	NORSK HYDRO
3685.00		BULK	DC	441	1.3	1.5	1.7	91	0.45	NORSK HYDRO
3690.00		BULK	DC	439	1.3	1.7	1.7	100	0.44	NORSK HYDRO
3695.00		BULK	DC	438	1.1	1.4	1.7	86	0.44	NORSK HYDRO
3700.00		BULK	DC	439	1.3	1.4	1.7	86	0.47	NORSK HYDRO
3705.00		BULK	DC	435	1.6	1.9	1.9	103	0.46	NORSK HYDRO
3710.00		BULK	DC	439	1.2	1.4	1.8	79	0.46	NORSK HYDRO
3715.00		BULK	DC	441	0.5	0.9	1.3	68	0.38	NORSK HYDRO
3720.00		BULK	DC	440	0.4	0.8	1.1	75	0.33	NORSK HYDRO
3725.00		BULK	DC	439	0.4	0.8	1.1	72	0.33	NORSK HYDRO
3730.00		BULK	DC	426	0.2	0.5	0.8	62	0.26	NORSK HYDRO
3735.00		BULK	DC	442	0.4	0.7	1.0	71	0.34	NORSK HYDRO
3740.00		BULK	DC	434	0.5	0.8	1.2	68	0.36	NORSK HYDRO
3745.00		BULK	DC	438	0.8	1.0	1.4	73	0.45	NORSK HYDRO
3750.00		BULK	DC	436	0.9	1.1	1.4	79	0.43	NORSK HYDRO
3755.00		BULK	DC	431	0.6	1.0	1.4	69	0.37	NORSK HYDRO
3760.00		BULK	DC	405	0.4	1.0	1.4	75	0.30	NORSK HYDRO
3765.00		BULK	DC	433	0.4	0.8	1.2	69	0.31	NORSK HYDRO
3770.00		BULK	DC	431	0.2	0.7	1.1	65	0.23	NORSK HYDRO

TABLE: 1.1

Petroleum Geochemistry Group
Research Centre Bergen



HYDRO

ROCK EVAL SCREENING DATA, WELL NOR:6507/2-3 (cont'd)

Depth (m)	Group/Fm.	Lithology	Type	Tmax DegC	S1 kg/t	S2 kg/t	TOC %	HI	PI	Analysing Company
3775.00		BULK	DC	376	0.2	0.7	1.0	72	0.21	NORSK HYDRO
3780.00		BULK	DC	426	0.5	1.1	1.3	86	0.32	NORSK HYDRO
3785.00		BULK	DC	441	0.7	1.2	1.4	92	0.36	NORSK HYDRO
3790.00		BULK	DC	442	1.3	1.7	1.5	113	0.43	NORSK HYDRO
3795.00		BULK	DC	440	0.9	1.3	1.5	89	0.40	NORSK HYDRO
3800.00		BULK	DC	431	0.4	0.9	1.1	83	0.30	NORSK HYDRO
3805.00		BULK	DC	438	0.3	0.9	1.1	85	0.27	NORSK HYDRO
3810.00		BULK	DC	448	0.1	0.6	0.7	79	0.13	NORSK HYDRO
3815.00		BULK	DC	385	0.1	0.6	0.8	75	0.15	NORSK HYDRO
3820.00		BULK	DC	393	0.1	0.8	0.7	101	0.13	NORSK HYDRO
3825.00		BULK	DC	416	0.1	0.9	0.8	110	0.11	NORSK HYDRO
3830.00		BULK	DC	385	0.0	0.5	0.5	96	0.05	NORSK HYDRO
3835.00		BULK	DC	389	0.0	0.6	0.5	115	0.05	NORSK HYDRO
3840.00		BULK	DC	444	1.3	4.7	2.2	213	0.22	NORSK HYDRO
3845.00		BULK	DC	440	6.0	16.5	5.8	285	0.27	NORSK HYDRO
3850.00		BULK	DC	441	7.1	17.1	6.3	270	0.29	NORSK HYDRO
3855.00		BULK	DC	440	8.2	18.1	7.3	249	0.31	NORSK HYDRO
3860.00		BULK	DC	437	9.2	16.8	7.0	239	0.35	NORSK HYDRO
3865.00		BULK	DC	440	9.5	18.9	7.3	258	0.33	NORSK HYDRO
3870.00		BULK	DC	440	9.1	16.8	6.7	252	0.35	NORSK HYDRO
3875.00		BULK	DC	438	8.3	14.9	6.3	237	0.36	NORSK HYDRO
3880.00		BULK	DC	438	8.0	14.0	6.3	224	0.36	NORSK HYDRO
3885.00		BULK	DC	440	8.1	15.2	6.6	231	0.35	NORSK HYDRO
3890.00		BULK	DC	441	7.1	13.4	6.1	220	0.35	NORSK HYDRO
3895.00		BULK	DC	439	7.9	13.6	6.8	201	0.37	NORSK HYDRO
3900.00		BULK	DC	439	7.4	12.0	6.6	183	0.38	NORSK HYDRO
3905.00		BULK	DC	438	7.2	11.8	6.2	189	0.38	NORSK HYDRO
3910.00		BULK	DC	435	6.7	9.2	5.5	166	0.42	NORSK HYDRO
3915.00		BULK	DC	437	6.2	8.1	5.3	154	0.43	NORSK HYDRO
3920.00		BULK	DC	438	5.9	8.6	5.8	149	0.41	NORSK HYDRO
3925.00		BULK	DC	441	5.7	9.1	5.8	158	0.38	NORSK HYDRO
3930.00		BULK	DC	439	5.5	9.5	6.1	157	0.37	NORSK HYDRO
3935.00		BULK	DC	443	5.9	11.4	6.6	173	0.34	NORSK HYDRO

TABLE: 1.1

Petroleum Geochemistry Group
Research Centre Bergen



HYDRO

ROCK EVAL SCREENING DATA, WELL NOR:6507/2-3 (cont'd)

Depth (m)	Group/Fm.	Lithology	Type	Tmax DegC	S1 kg/t	S2 kg/t	TOC %	HI	PI	Analysing Company
3940.00		BULK	DC	440	6.0	10.0	6.4	156	0.37	NORSK HYDRO
3945.00		BULK	DC	439	5.6	9.4	6.0	158	0.37	NORSK HYDRO
3950.00		BULK	DC	441	5.6	10.3	5.9	175	0.35	NORSK HYDRO
3955.00		BULK	DC	441	5.3	8.8	5.4	164	0.38	NORSK HYDRO
3960.00		BULK	DC	442	4.9	9.2	5.7	161	0.35	NORSK HYDRO
3965.00		BULK	DC	444	5.0	10.9	6.5	167	0.32	NORSK HYDRO
3970.00		BULK	DC	443	5.0	10.8	6.7	163	0.32	NORSK HYDRO

TABLE: 1.2

Petroleum Geochemistry Group
Research Centre Bergen



HYDRO

ROCK EVAL SCREENING DATA ON EXTRACTED SEDIMENTS, WELL NOR:6507/2-3

Depth (m)	Group/Fm.	Lithology	Type	Tmax DegC	S1 kg/t	S2 kg/t	TOC %	HI	PI	Analysing Company
1500.00		BULK/MUD_AD	DC	415	0.1	0.6	0.5	127	0.13	NORSK HYDRO
1600.00		BULK/MUD_AD	DC	415	0.3	1.4	1.3	109	0.17	NORSK HYDRO
1700.00		BULK/MUD_AD	DC	420	0.3	1.5	1.2	124	0.17	NORSK HYDRO
1800.00		BULK/MUD_AD	DC	408	0.2	0.9	1.0	89	0.17	NORSK HYDRO
1900.00		BULK/MUD_AD	DC	373	0.1	0.4	0.1	375	0.13	NORSK HYDRO
2000.00		BULK/MUD_AD	DC	412	0.2	1.1	0.9	124	0.14	NORSK HYDRO
2050.00		BULK/MUD_AD	DC	367	0.1	0.4	0.4	100	0.15	NORSK HYDRO
2100.00		BULK/MUD_AD	DC	358	0.1	0.3	0.4	74	0.14	NORSK HYDRO
2145.00		BULK/MUD_AD	DC	353	0.1	0.3	0.5	73	0.17	NORSK HYDRO
2200.00		BULK/MUD_AD	DC	364	0.1	0.5	0.6	88	0.09	NORSK HYDRO
2250.00		BULK/MUD_AD	DC	423	0.1	0.8	0.8	101	0.08	NORSK HYDRO
2300.00		BULK/MUD_AD	DC	376	0.1	0.6	0.6	98	0.18	NORSK HYDRO
2350.00		BULK/MUD_AD	DC	419	0.1	0.6	0.7	85	0.15	NORSK HYDRO
2400.00		BULK/MUD_AD	DC	426	0.1	0.9	1.0	86	0.11	NORSK HYDRO
2450.00		BULK/MUD_AD	DC	426	0.1	0.9	0.9	106	0.11	NORSK HYDRO
2500.00		BULK/MUD_AD	DC	428	0.1	0.8	0.8	105	0.10	NORSK HYDRO
2550.00		BULK/MUD_AD	DC	431	0.1	1.0	0.8	127	0.10	NORSK HYDRO
2600.00		BULK/MUD_AD	DC	429	0.2	0.9	0.7	123	0.19	NORSK HYDRO
2650.00		BULK/MUD_AD	DC	392	0.1	0.8	0.8	94	0.15	NORSK HYDRO
2700.00		BULK/MUD_AD	DC	423	0.1	0.6	0.8	76	0.13	NORSK HYDRO
2750.00		BULK/MUD_AD	DC	432	0.1	0.8	0.9	84	0.11	NORSK HYDRO
2800.00		BULK/MUD_AD	DC	433	0.1	0.9	0.9	100	0.09	NORSK HYDRO
2840.00		BULK/MUD_AD	DC	429	0.2	0.8	0.9	91	0.21	NORSK HYDRO
2900.00		BULK/MUD_AD	DC	430	0.1	0.7	0.7	89	0.12	NORSK HYDRO
2950.00		BULK/MUD_AD	DC	433	0.2	0.7	0.7	92	0.20	NORSK HYDRO
3000.00		BULK/MUD_AD	DC	435	0.1	0.6	0.9	74	0.10	NORSK HYDRO
3050.00		BULK/MUD_AD	DC	433	0.1	0.6	0.8	85	0.10	NORSK HYDRO
3100.00		BULK	DC	436	0.0	0.7	0.9	77	0.04	NORSK HYDRO
3200.00		BULK	DC	435	0.0	0.6	0.8	74	0.05	NORSK HYDRO
3300.00		BULK	DC	436	0.0	0.7	0.9	80	0.04	NORSK HYDRO
3400.00		BULK	DC	437	0.1	0.4	1.1	35	0.12	NORSK HYDRO
3500.00		BULK	DC	421	0.0	0.1	0.7	16	0.21	NORSK HYDRO
3600.00		BULK	DC	399	0.1	0.1	0.9	12	0.31	NORSK HYDRO

TABLE: 1.2

Petroleum Geochemistry Group
Research Centre Bergen



HYDRO

ROCK EVAL SCREENING DATA ON EXTRACTED SEDIMENTS, WELL NOR:6507/2-3 (cont'd)

Depth (m)	Group/Fm.	Lithology	Type	Tmax DegC	S1 kg/t	S2 kg/t	TOC %	HI	PI	Analysing Company
3700.00		BULK	DC	447	0.1	0.7	1.5	45	0.07	NORSK HYDRO
3750.00		BULK	DC	459	0.0	0.4	1.3	34	0.07	NORSK HYDRO
3800.00		BULK	DC	447	0.0	0.7	1.0	68	0.04	NORSK HYDRO
3850.00		BULK	DC	441	0.1	11.2	5.6	200	0.01	NORSK HYDRO
3880.00		BULK	DC	444	0.1	6.7	5.4	124	0.02	NORSK HYDRO
3900.00		BULK	DC	440	0.2	7.4	6.4	116	0.02	NORSK HYDRO
3950.00		BULK	DC	443	0.1	6.4	6.4	100	0.02	NORSK HYDRO

DATE: 05-05-94

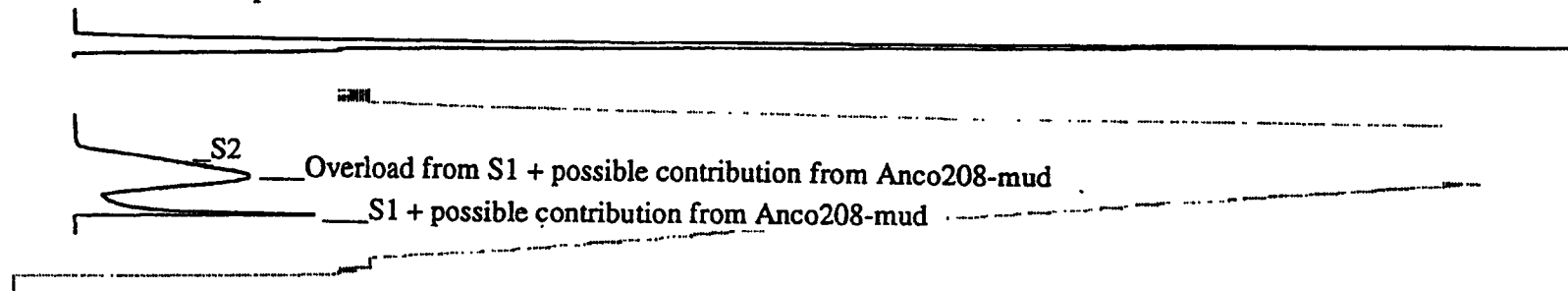
ANALYSIS

CYCLE : 1

SCALE = 1/64

DEPTH	WEIGHT	GAS	OIL	S 2	Imax	G P 1	O P 1	T P 1	T O C	H I
1600	51.5	3.00	1.55	5.10	368	0.00	9.23	0.23		

Unextracted sample



DATE: 20-07-94

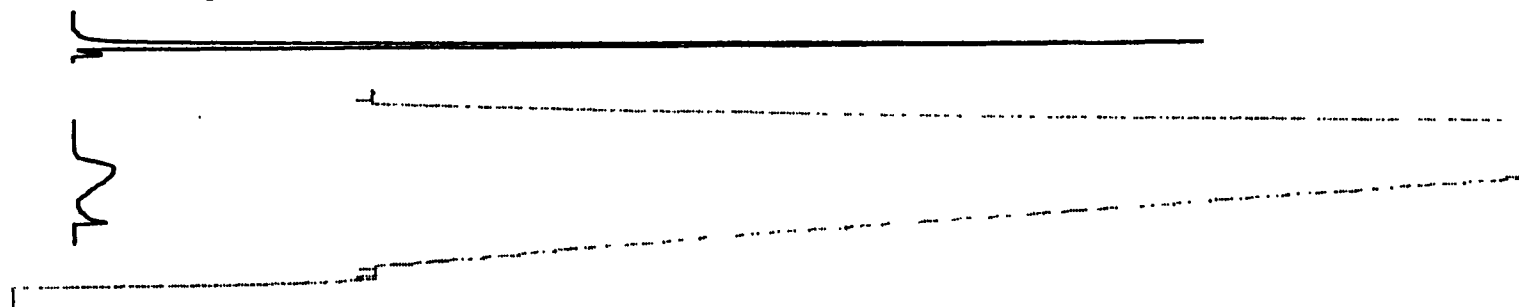
ANALYSIS

CYCLE : 1

SCALE = 1/64

DEPTH	WEIGHT	GAS	OIL	S 2	Imax	G P 1	O P 1	T P 1	T O C	H I
1600	51.3	0.00	0.27	1.36	415	0.00	0.17	0.17		

Extracted sample



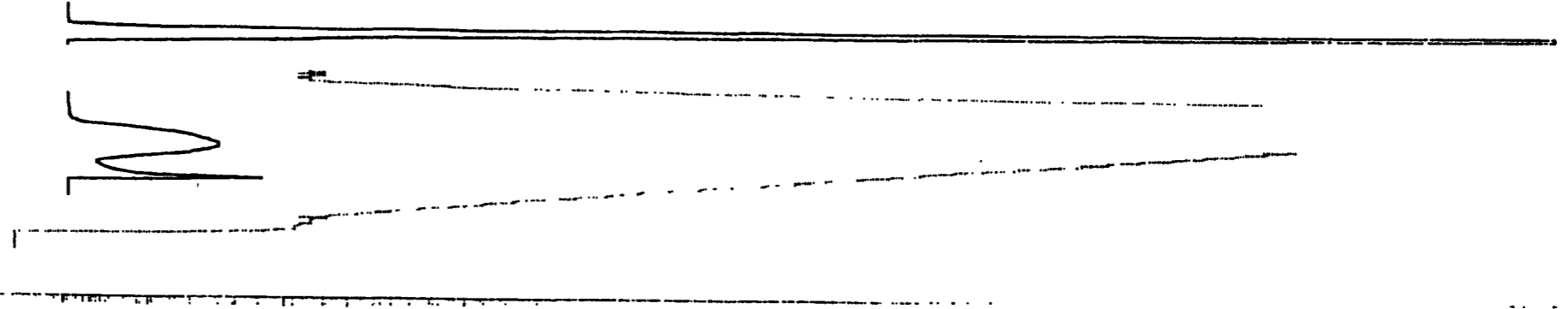
DATE: 05-05-94

ANALYSIS

CYCLE : 1

SCALE = 1/64

DEPTH	WEIGHT	GAS	OIL	S 2	Tmax	G P I	O P I	T P I	T O C	H I
1800	51.1	0.00	1.68	5.63	304	0.00	0.03	0.23	-	



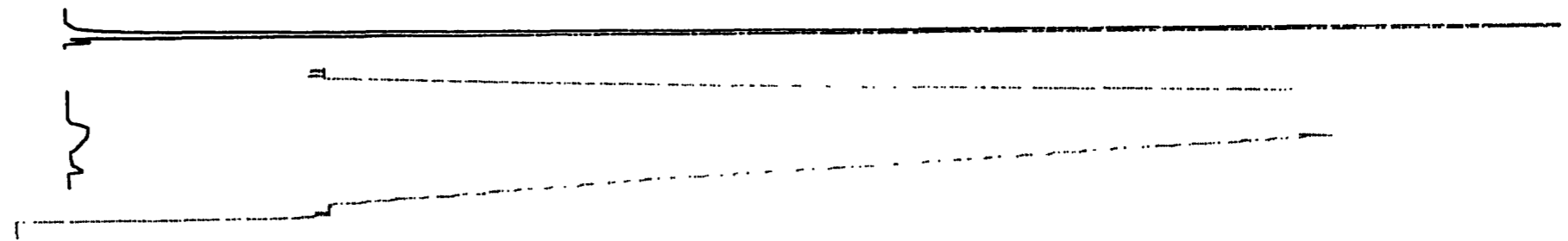
DATE: 20-07-94

ANALYSIS

CYCLE : 1

SCALE = 1/64

DEPTH	WEIGHT	GAS	OIL	S 2	Tmax	G P I	O P I	T P I	T O C	H I
1800	52.5	0.00	0.19	0.93	408	0.00	0.17	0.17		



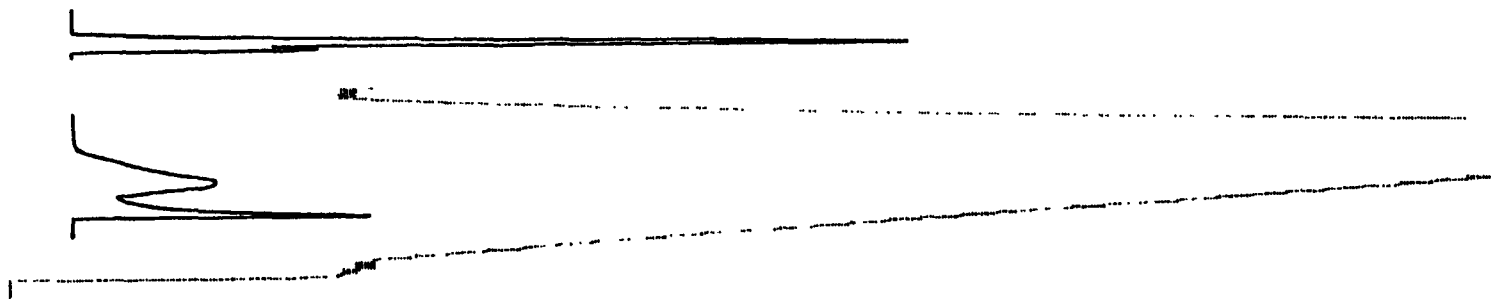
DATE: 05-05-94

ANALYSIS

CYCLE : 1

SCALE = 1/64

DEPTH	WEIGHT	GAS	OIL	S 2	Tmax	G P 1	O P 1	T P 1	T O C	H I
2000	50.3	0.00	2.48	3.75	344	0.00	0.40	0.40		



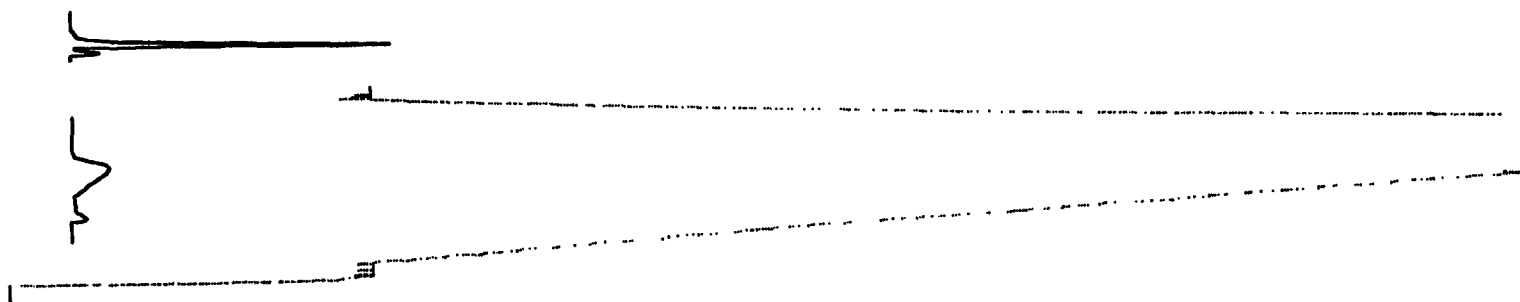
DATE: 20-07-94

ANALYSIS

CYCLE : 1

SCALE = 1/64

DEPTH	WEIGHT	GAS	OIL	S 2	Tmax	G P 1	O P 1	T P 1	T O C	H I
2000	50.9	0.00	0.19	1.15	412	0.00	0.14	0.14		



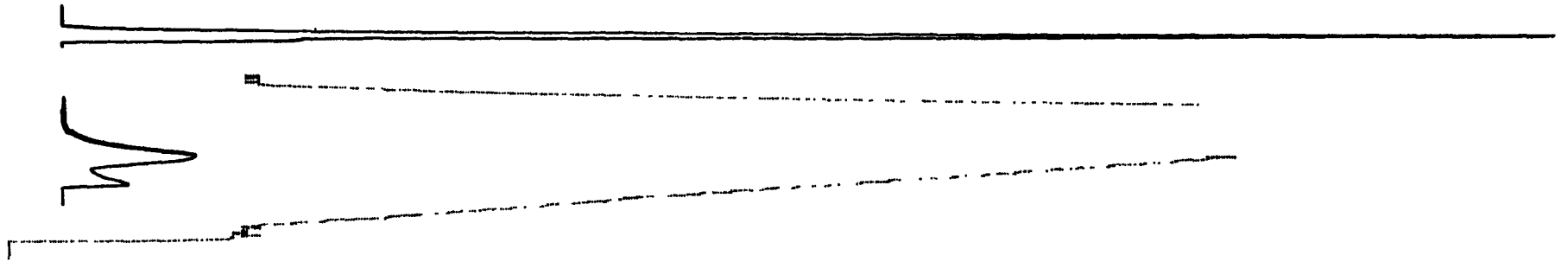
DATE: 06-05-94

ANALYSIS

CYCLE : 1

SCALE = 1/64

DEPTH	WEIGHT	GAS	OIL	S 2	%max	U P I	U P I	T P I	T O C	H I
2950	59.5	0.00	1.06	3.46	254	0.99	0.23	0.23		



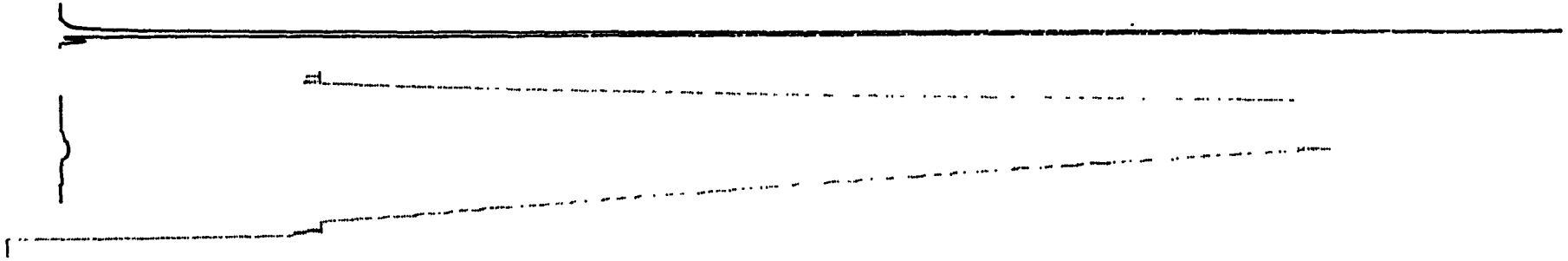
DATE: 20-07-94

ANALYSIS

CYCLE : 1

SCALE = 1/64

DEPTH	WEIGHT	GAS	OIL	S 2	%max	U P I	U P I	T P I	T O C	H I
2050	50.8	0.00	0.07	0.39	367	0.00	0.15	0.15		



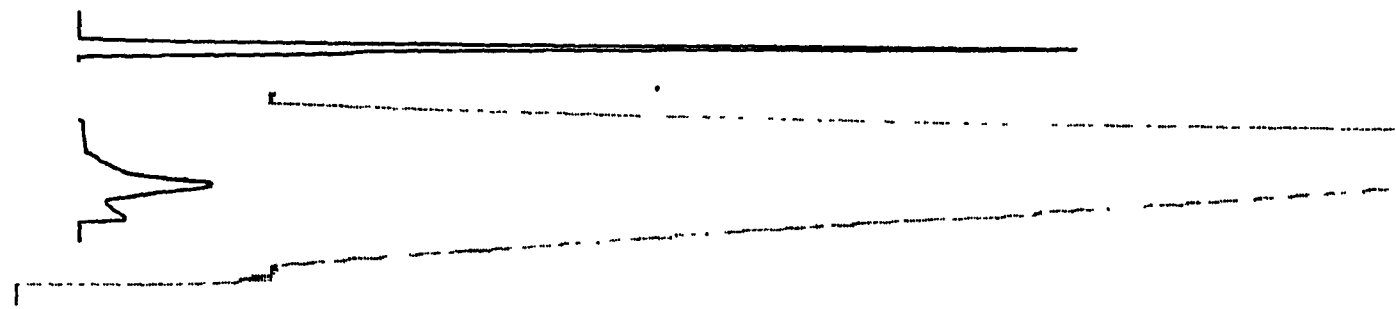
DATE: 06-05-94

ANALYSIS

CYCLE : 1

SCALE = 1:64

DEPTH	WEIGHT	GAS	OIL	SOL	IMP	OP	IP	TOC	H
2200	50.7	0.00	0.74	3.15	55	0.00	0.19	0.19	



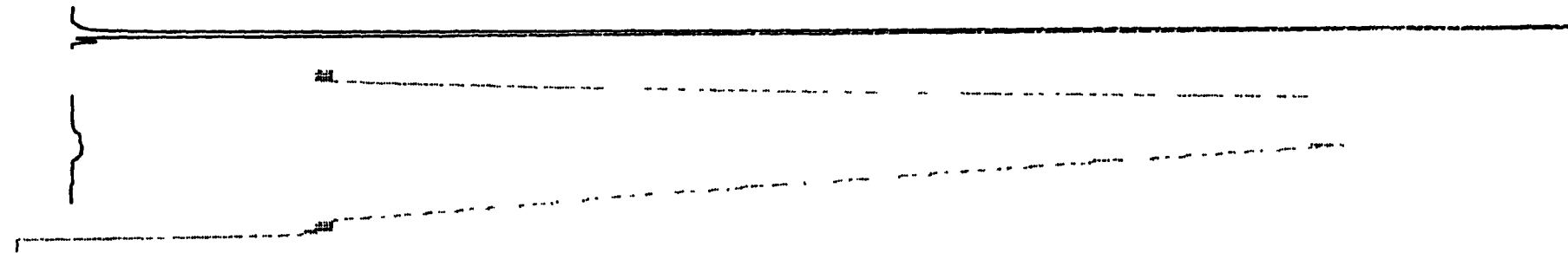
DATE: 20-07-94

ANALYSIS

CYCLE : 1

SCALE = 1:4

DEPTH	WEIGHT	GAS	OIL	SOL	IMP	OP	IP	TOC	H
2200	51.0	0.00	9.05	0.52	564	0.00	0.09	0.09	



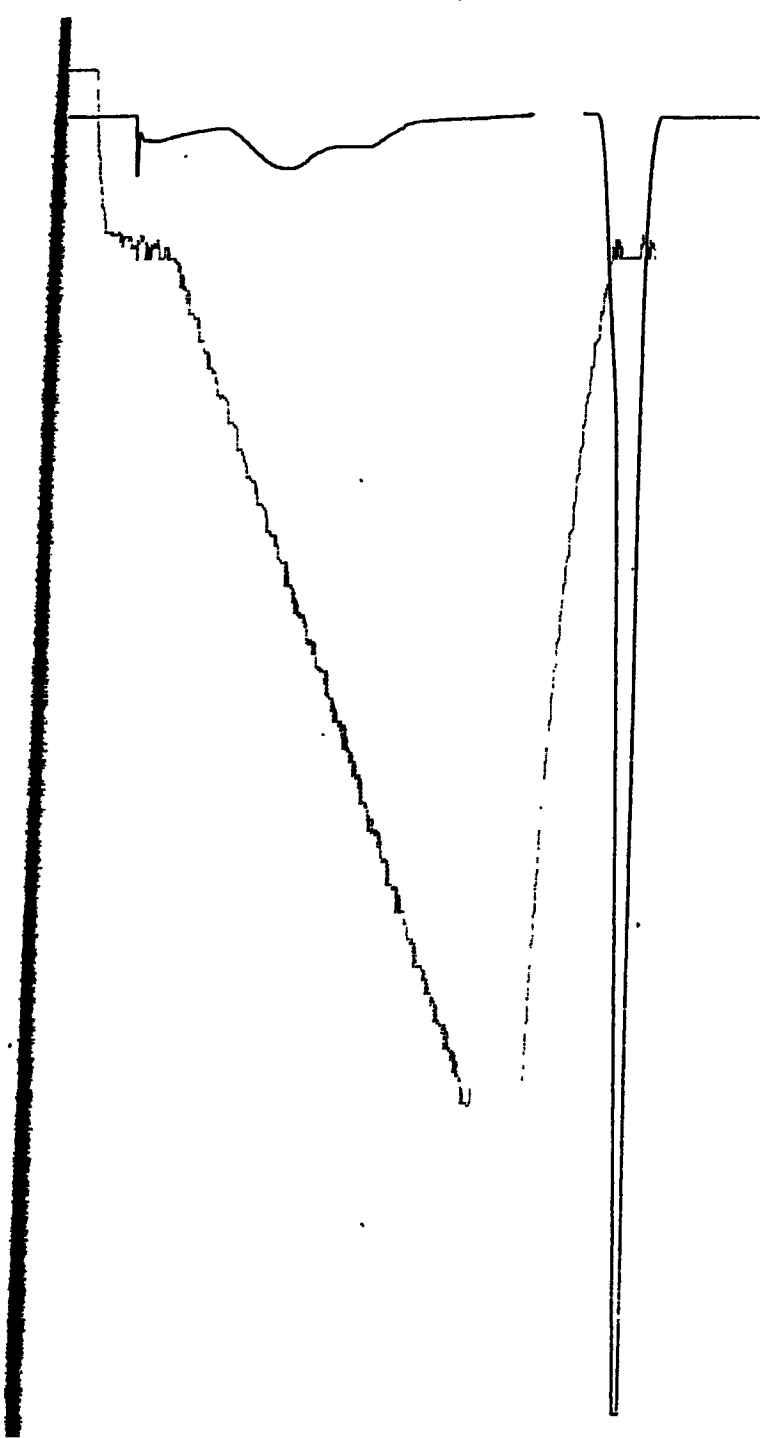
DATE: 20-07-94

ANALYSIS

CYCLE: 1

SCALE = 1/64

DEPTH	WEIGHT	GAS	OIL	S L	IMAX	GP I	GP I	GP I	GP I	HI
2750	52.1	0.00	0.55	2.11	355	0.000	0.211	0.211		



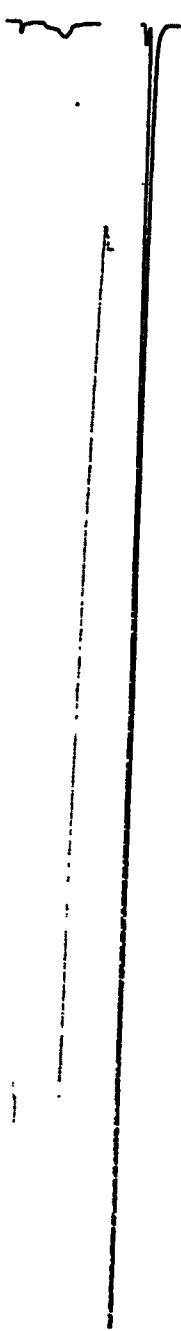
DATE: 20-07-94

ANALYSIS

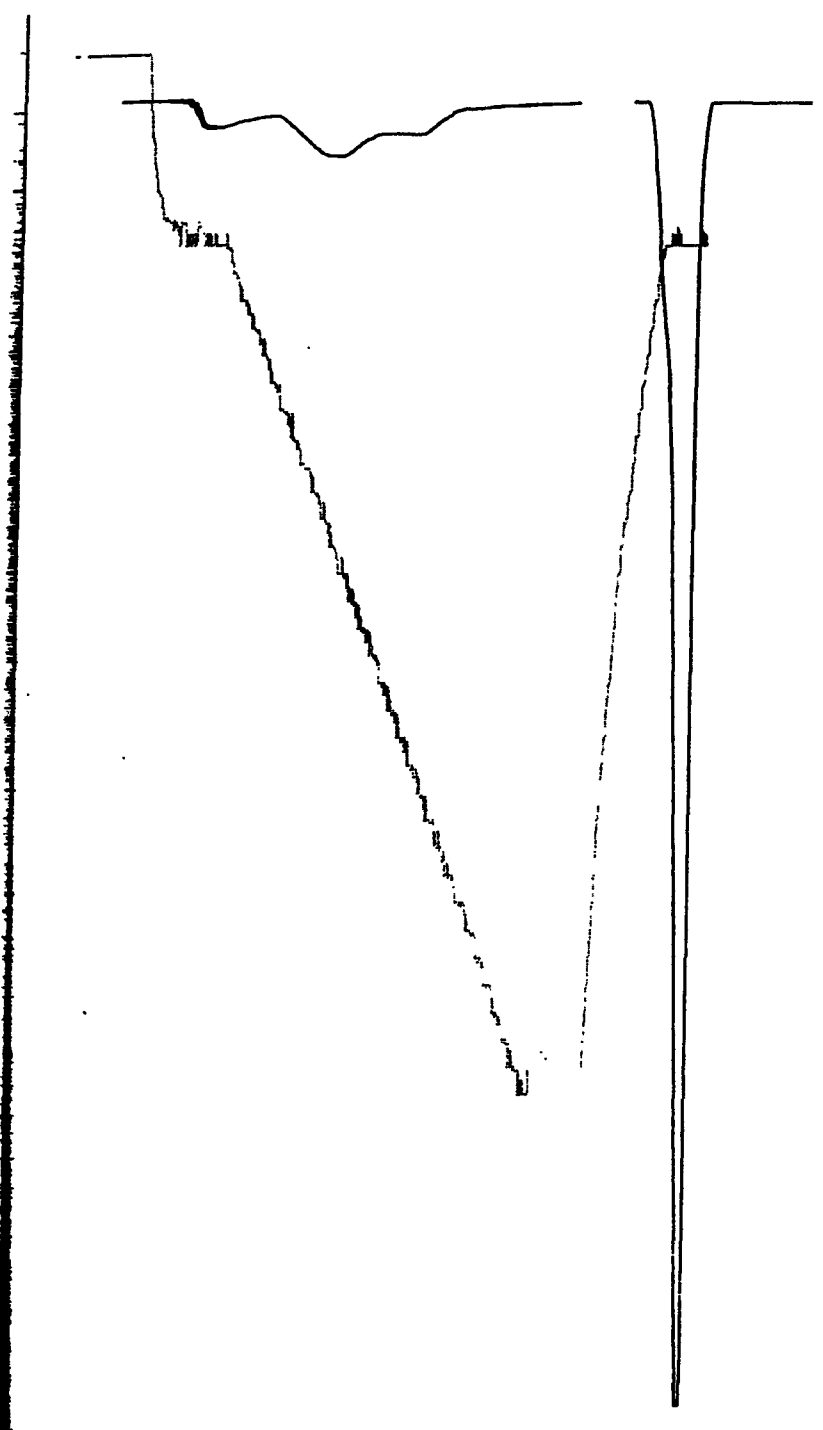
CYCLE: 1

SCALE = 1/64

DEPTH	WEIGHT	GAS	OIL	S L	IMAX	GP I	GP I	GP I	GP I	HI
2750	51.0	0.00	0.89	0.76	432	0.00	0.11	0.11		



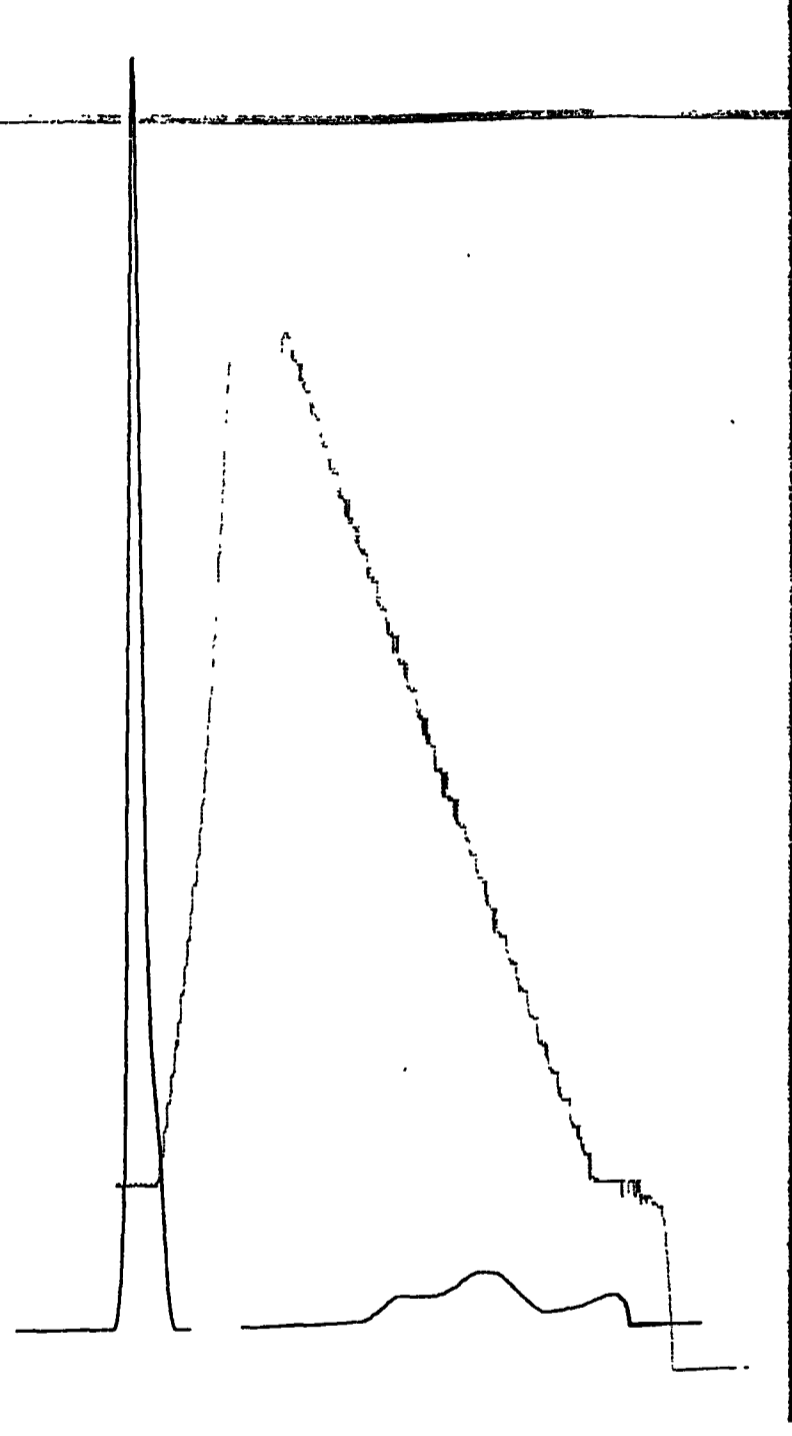
DEPTH	WEIGHT	GMS	OIL	S 2	max	G P I	O P I	T P I	T O C	H I
2800	51.2	0.00	0.56	2.26	353	0.00	0.29	0.20		



DATE: 20-07-94 ANALYSIS CYCLE : 1 SCALE = 1/64

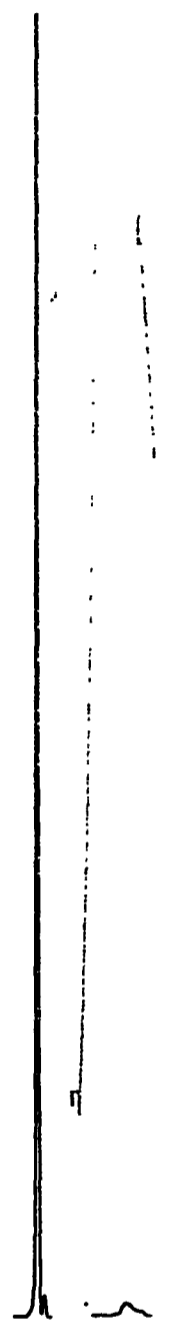
DEPTH	WEIGHT	GMS	OIL	S 2	max	G P I	O P I	T P I	T O C	H I
2800	51.1	0.00	0.44	0.90	433	0.00	0.29	0.00		

DEPTH : WEIGHT : GAS : OIL : S 2 : I max : G P I : I P I : I O C : H I
 : 2900 : 51.5 : 0.00 : 0.60 : 2.17 : 353 : 0.00 : 0.22 : 0.22 : :

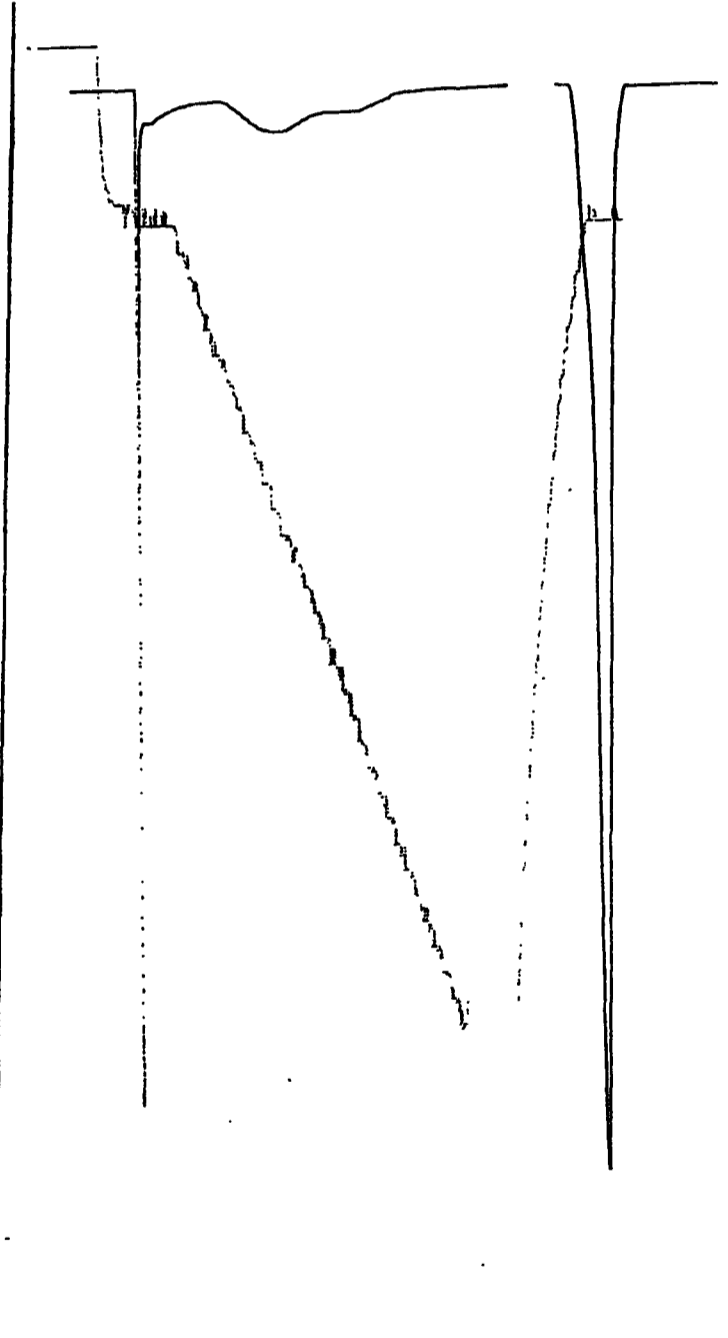


DATE: 20-07-94 ANALYSIS CILLS : 1 SCALE = 1.64

DEPTH : WEIGHT : GAS : OIL : S 2 : I max : G P I : I P I : I O C : H I
 : 2900 : 52.5 : 0.00 : 0.60 : 0.60 : 450 : 0.00 : 0.10 : 0.10 : :

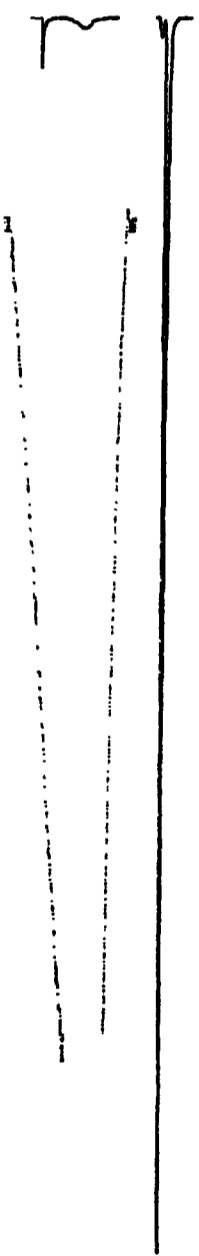


:DEPTH:WEIGHT:GRS : OIL : S 2 : TMAX : G P I : U P I : T P I : I O C : H I :
 : 2940 : 50.8 : 0.00 : 0.39 : 1.75 : 252 : 0.00 : 0.20 : 0.20 : 0.93 : 166 :
 : 2950 : 51.3 : 0.00 : 1.16 : 1.99 : 252 : 0.00 : 0.30 : 0.30 : : :



DATE: 28-07-94 ANALYSIS CYCLE : 1 SCALE = 1/64

:DEPTH:WEIGHT:GRS : OIL : S 2 : TMAX : G P I : U P I : T P I : I O C : H I :
 : 2900 : 52.5 : 0.00 : 0.89 : 0.66 : 430 : 0.00 : 0.10 : 0.12 : 0.74 : 99 :
 : 2950 : 51.4 : 0.00 : 0.17 : 0.60 : 400 : 0.00 : 0.20 : 0.20 : : :



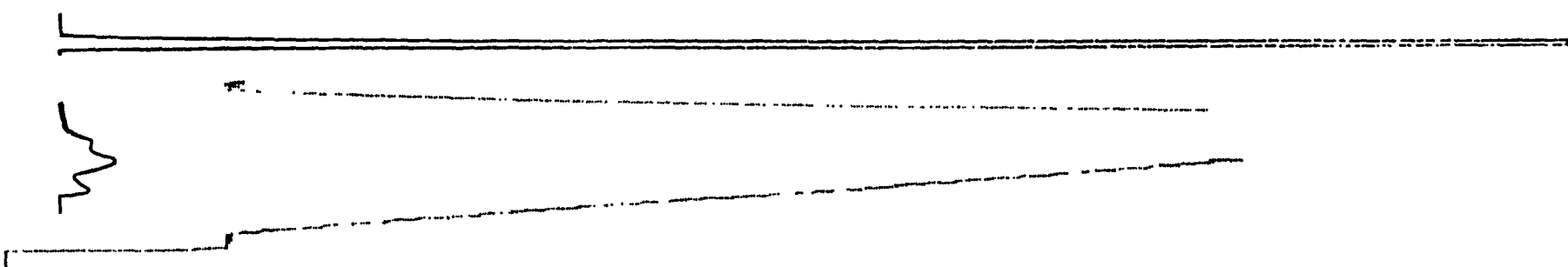
DATE: 06-06-94

ANALYSIS

CYCLE : 1

SCALE = 1/64

DEPTH	WEIGHT	GAS	OIL	S 2	Tmax	G P I	O P I	T P 1	T O C	H I
3000	50.1	0.00	0.53	1.21	353	0.00	0.19	0.19		



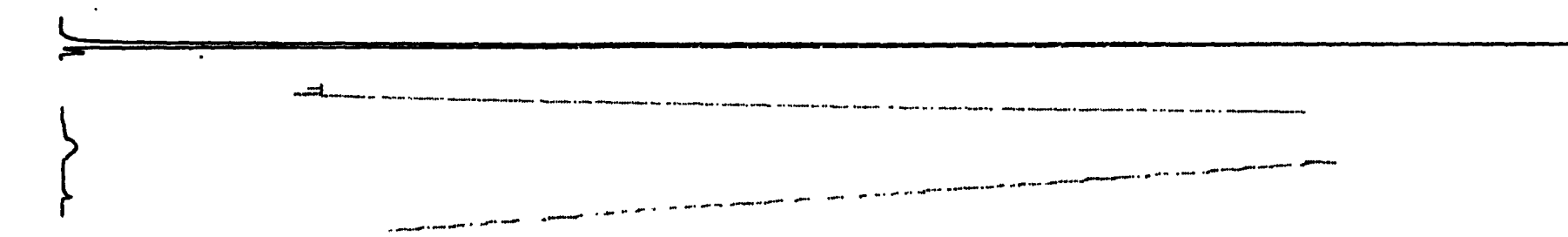
DATE: 20-07-94

ANALYSIS

CYCLE : 1

SCALE = 1/64

DEPTH	WEIGHT	GAS	OIL	S 2	Tmax	G P I	O P I	T P 1	T O C	H I
3000	50.5	0.00	0.07	0.63	434	0.00	0.10	0.10		



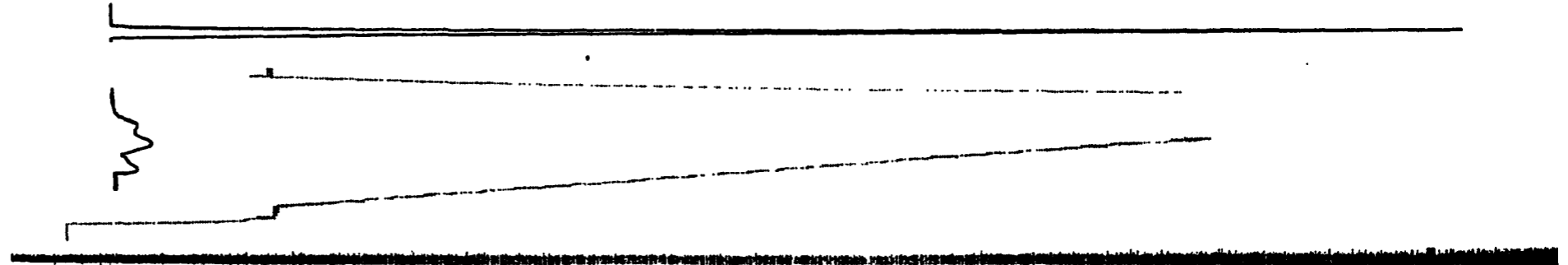
DATE: 06-06-94

ANALYSIS

CYCLE : 1

SCALE = 1/64

DEPTH	WEIGHT	GAS	OIL	S 2	Tmax	G P I	O P I	T P I	T O C	H I
3050	51.3	0.00	0.42	1.53	350	0.09	0.21	0.21		



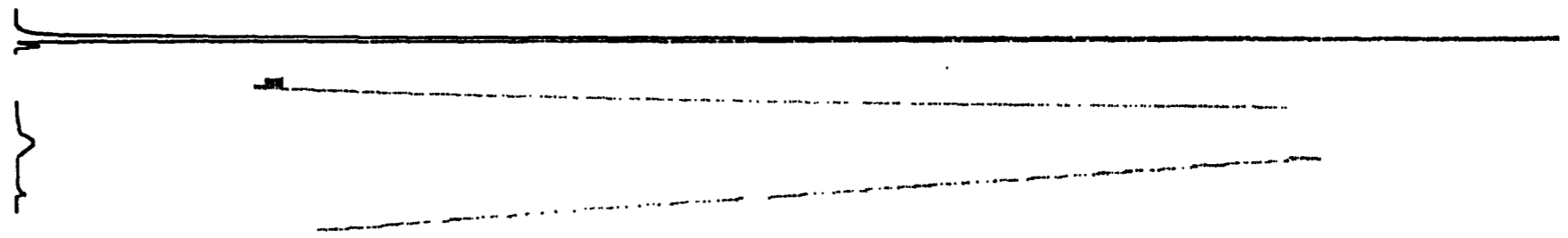
DATE: 20-07-94

ANALYSIS

CYCLE : 1

SCALE = 1/64

DEPTH	WEIGHT	GAS	OIL	S 2	Tmax	G P I	O P I	T P I	T O C	H I
3050	51.4	0.00	0.07	0.64	413	0.00	0.10	0.10		



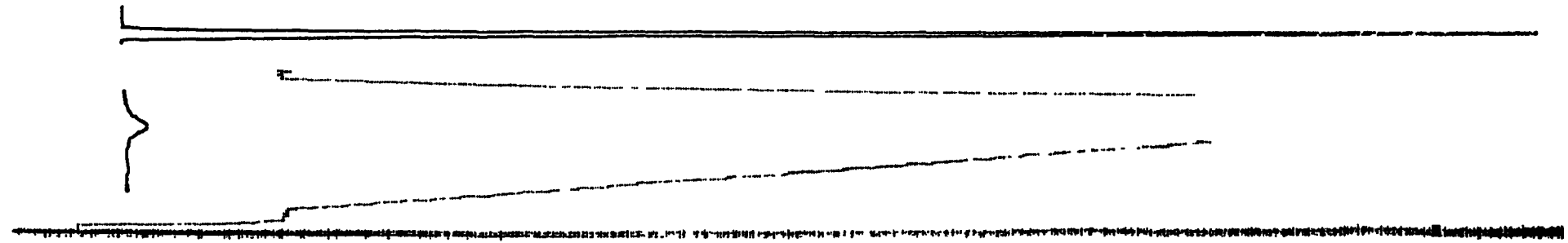
DATE: 06-06-94

ANALYSIS

CYCLE : 1

SCALE = 1/64

DEPTH	WEIGHT	GAS	OIL	S 2	Tmax	G P I	U P I	T P I	T O C	H I
3100	51.1	0.00	0.05	0.90	428	0.00	0.05	0.05		



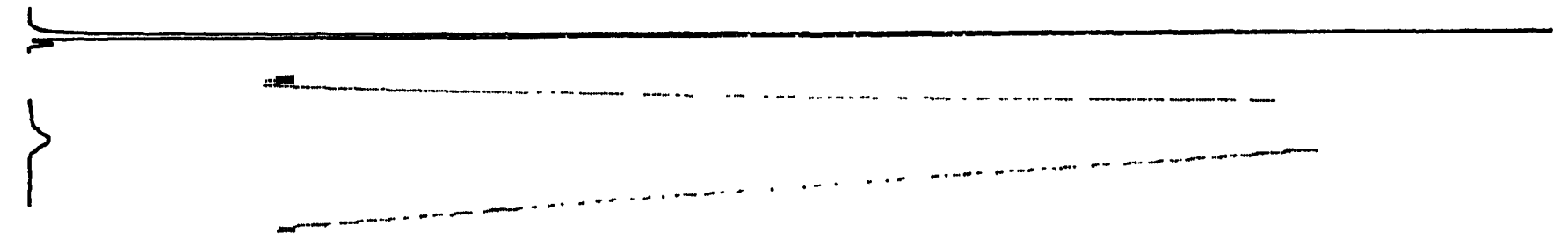
DATE: 20-07-94

ANALYSIS

CYCLE : 1

SCALE = 1/64

DEPTH	WEIGHT	GAS	OIL	S 2	Tmax	G P I	U P I	T P I	T O C	H I
3100	52.5	0.00	0.03	0.72	426	0.00	0.04	0.04		



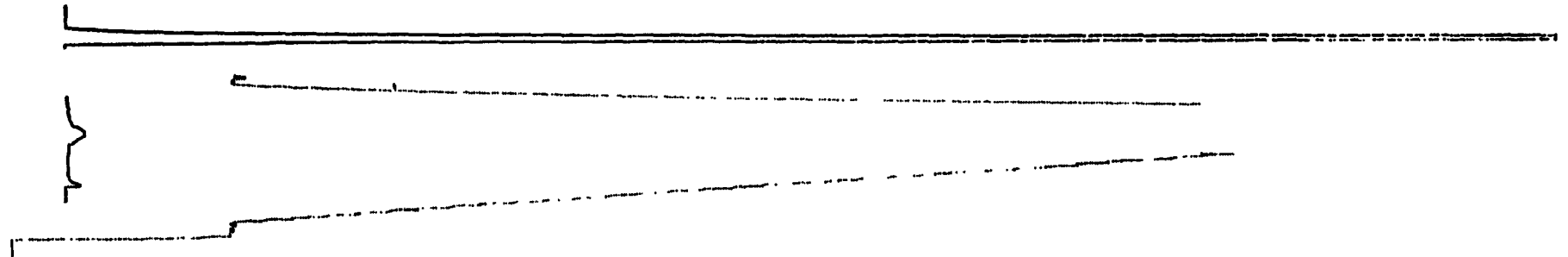
DATE: 07-06-94

ANALYSIS

CYCLE : 1

SCALE = 1/64

DEPTH	WEIGHT	GAS	OIL	S 2	Tmax	U P I	O P I	T P I	T O C	H I
3200	50.0	0.00	0.14	0.78	408	0.00	0.15	0.15		



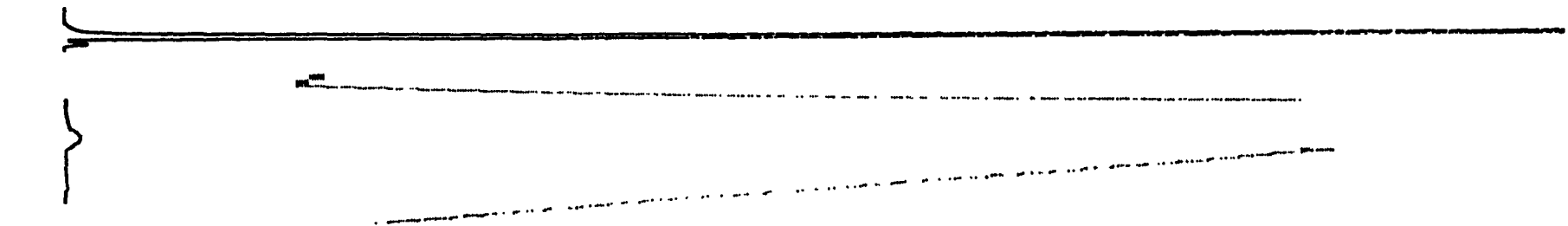
DATE: 20-07-94

ANALYSIS

CYCLE : 1

SCALE = 1/64

DEPTH	WEIGHT	GAS	OIL	S 2	Tmax	U P I	O P I	T P I	T O C	H I
3200	50.9	3.40	0.03	0.30	135	0.00	0.05	0.05		



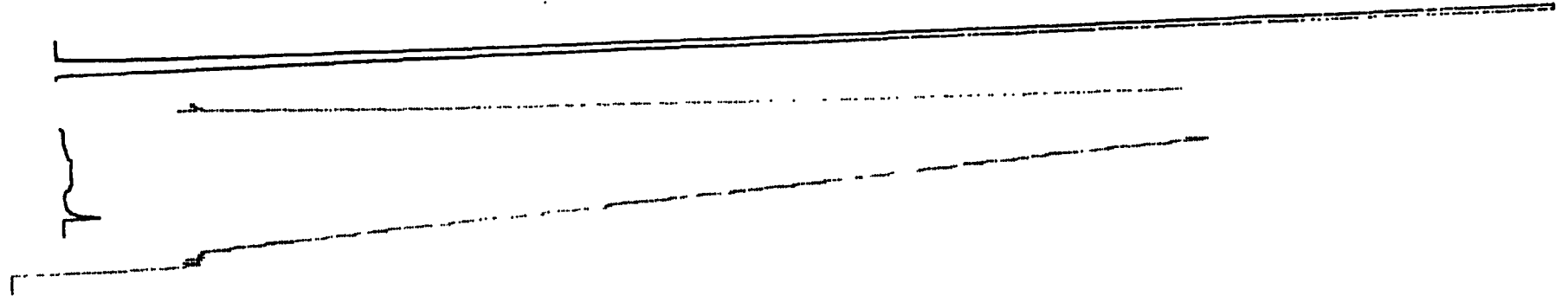
DATE: 28-06-94

ANALYSIS

CYCLE : 1

SCALE = 1/64

DEPTH	WEIGHT	GAS	OIL	S 2	Tmax	G P I	O P I	T P I	T O C	H I
3400	51.1	0.00	0.23	0.84	493	0.00	0.22	0.22		



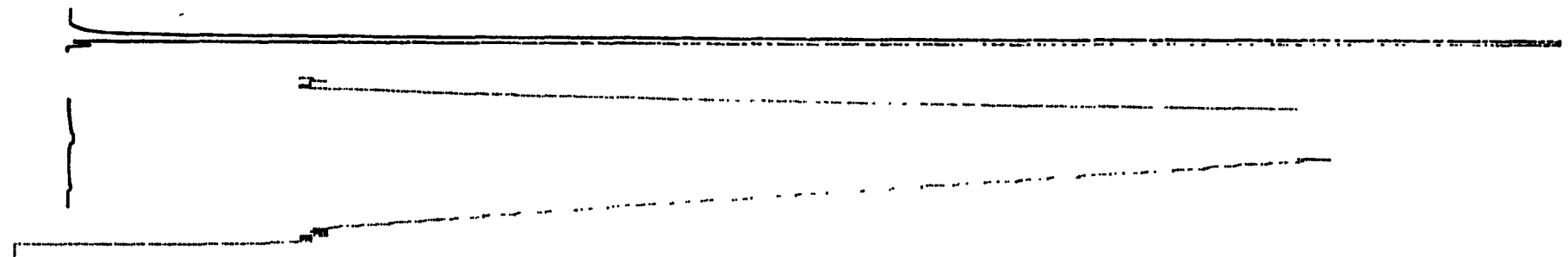
DATE: 28-07-94

ANALYSIS

CYCLE : 1

SCALE = 1/64

DEPTH	WEIGHT	GAS	OIL	S 2	Tmax	G P I	O P I	T P I	T O C	H I
3400	51.4	0.00	0.05	0.70	437	0.30	0.10	0.10		



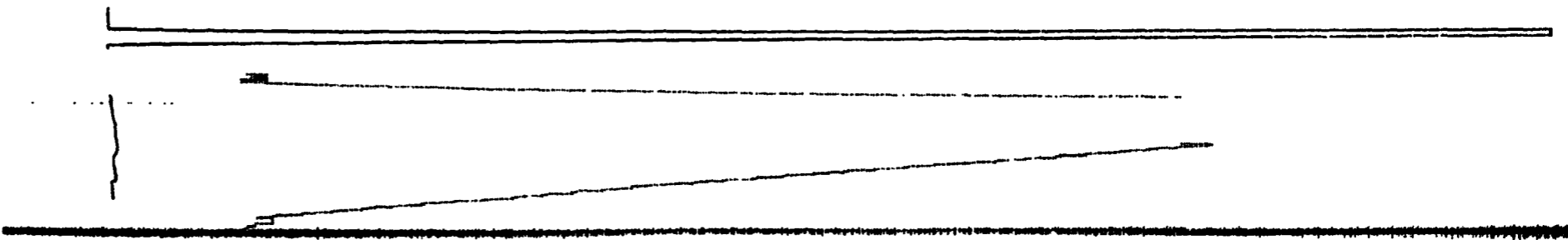
DATE: 28-06-94

ANALYSIS

CYCLE : 1

SCALE = 1/32

DEPTH	WEIGHT	GAS	OIL	S 2	Tmax	G P 1	O P I	T P I	T O C	H I
3500	50.8	0.00	0.05	0.27	355	0.00	0.16	0.16		



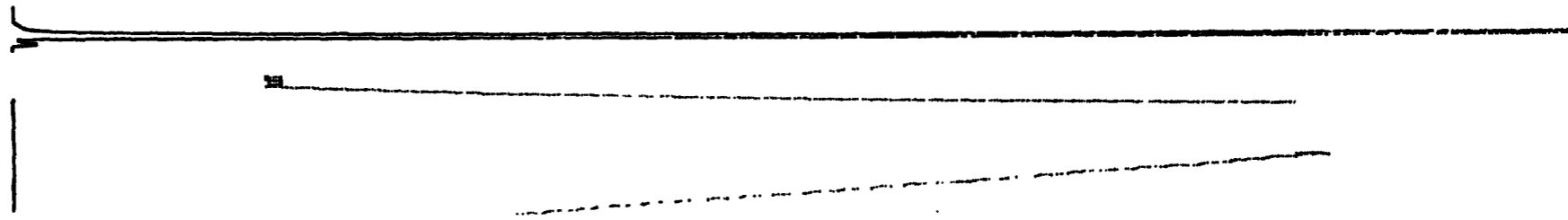
DATE: 28-07-94

ANALYSIS

CYCLE : 1

SCALE = 1/64

DEPTH	WEIGHT	GAS	OIL	S 2	Tmax	G P 1	O P I	T P I	T O C	H I
3500	51.3	0.00	0.03	0.11	421	0.00	0.21	0.21		



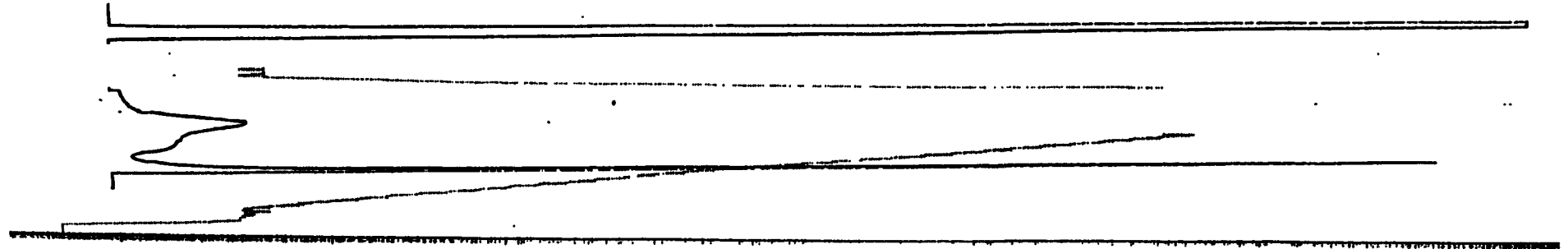
DATE: 29-06-94

ANALYSIS

CYCLE : 1

SCALE = 1/16

DEPTH	WEIGHT	GAS	OIL	S 2	Tmax	G P I	O P I	T P I	T O C	H I
3700	51.4	0.00	1.26	1.43	442	0.00	0.47	0.47		



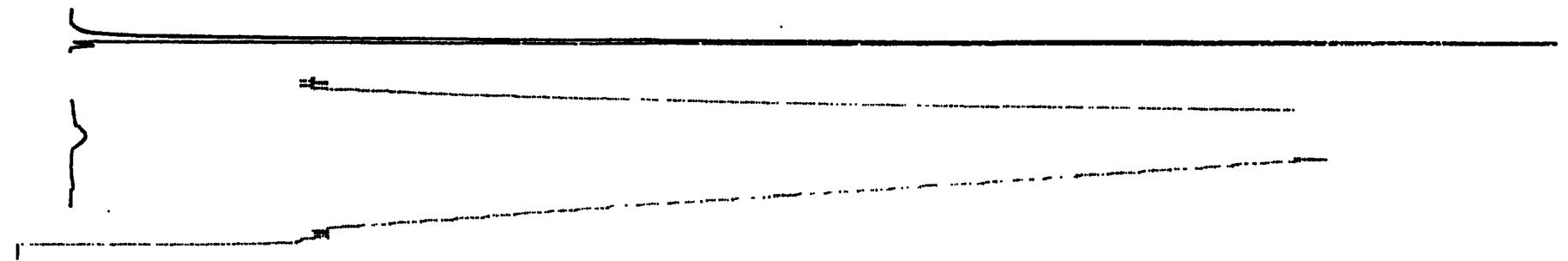
DATE: 20-07-94

ANALYSIS

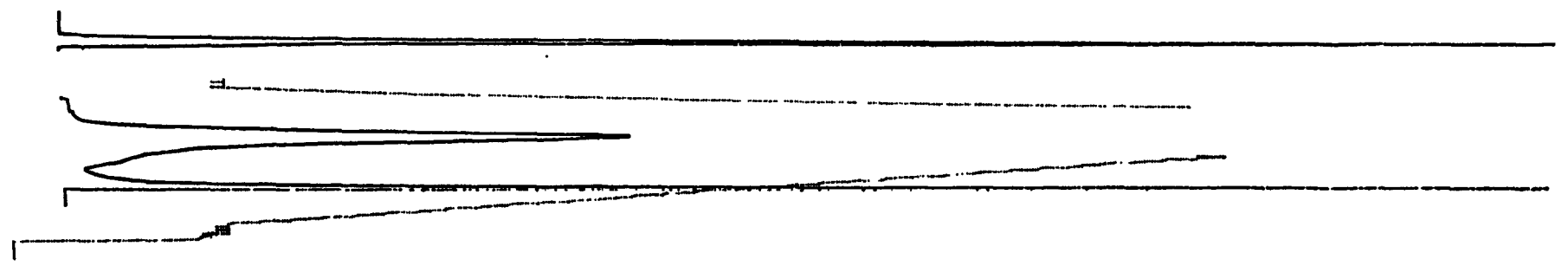
CYCLE : 1

SCALE = 1/64

DEPTH	WEIGHT	GAS	OIL	S 2	Tmax	G P I	O P I	T P I	T O C	H I
3700	50.7	0.00	0.05	0.49	442	0.00	0.07	0.07		

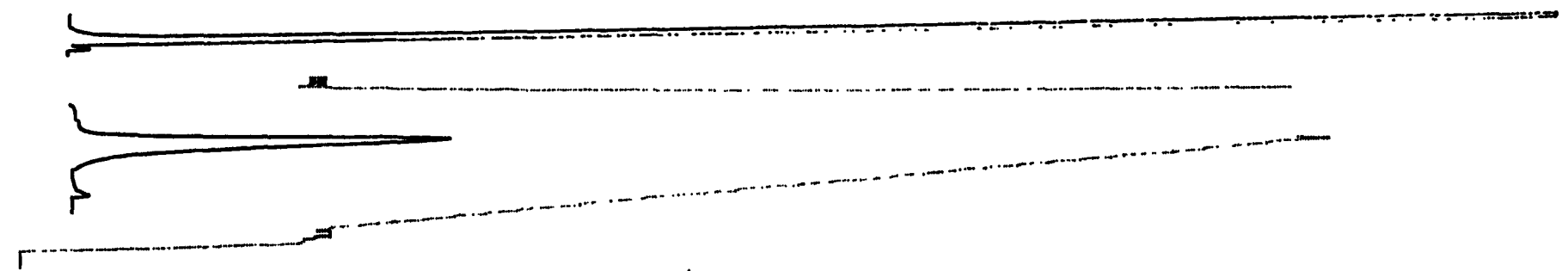


DEPTH	WEIGHT	GAS	OIL	S 2	Tmax	G P I	O P I	T P I	T O C	H I
1900	52.3	0.00	7.45	12.02	442	9.90	0.38	0.38		



DATE: 20-07-94

DEPTH	WEIGHT	GAS	OIL	S 2	Tmax	G P I	O P I	T P I	T O C	H I
1900	50.9	0.00	0.15	7.42	440	11.00	11.02	11.02		



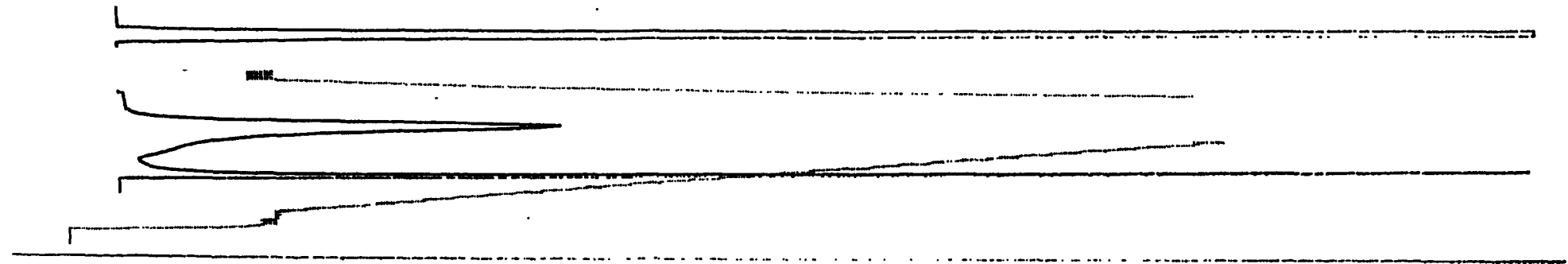
DATE: 01-07-94

ANALYSIS

CYCLE : 1

SCALE = 1/64

DEPTH	WEIGHT	GAS	OIL	S 2	Tmax	G P I	O P I	T P I	T O C	H I
3950	50.7	0.00	5.60	10.31	444	0.00	0.35	0.35		



DATE: 20-07-94

ANALYSIS

CYCLE : 1

SCALE = 1/64

DEPTH	WEIGHT	GAS	OIL	S 2	Tmax	G P I	O P I	T P I	T O C	H I
3950	50.4	0.00	0.13	6.38	445	0.00	0.02	0.02		

