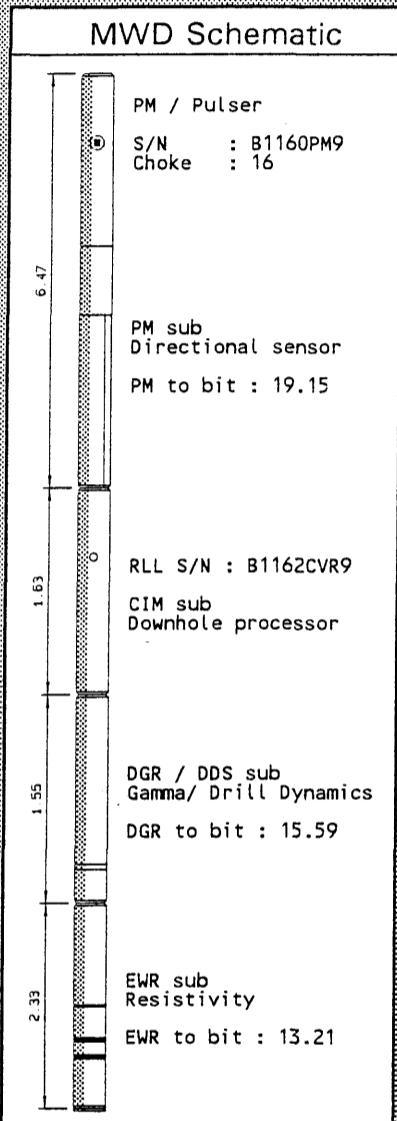


Bitrun Summary

MWD Run Time Data	Drilling Data	Mud Data
MWD Run : 06	Start Depth: 1247.0 m	Mud type : GYPSUM
Rig Bit : 07	End Depth : 1705.0 m	Weight/Visc: 1.35 / 62.0
Hole Size: 17.50 in	Footage : 458.0 m	Chlorides : 3000
Run Start: 03:48 10-JUL-95	Flow Rate : 3600.00 lpm	PV / YP : 26 / 16
Run End : 10:50 13-JUL-95	R.P.M. : 80	Solids/Sand: 12.5 / 0.00
BRT hrs : 79.03	W.O.B. : 20 T	%Oil/ O:W : 0 / 0 :100
Circ.hrs : 61.20	R.O.P. : 9 m/hr	
Oper.hrs : 79.65	S.P.P : 242 bar	



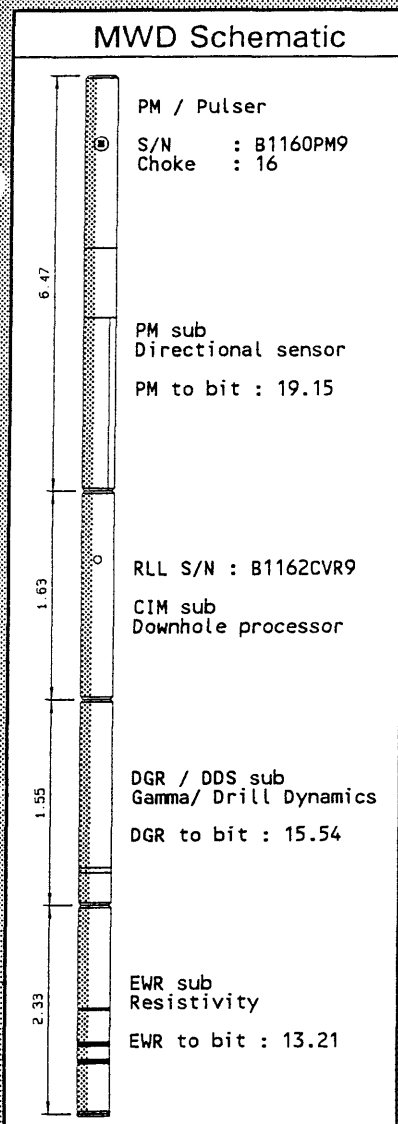
BHA Schematic

	Component	Length	O.D.	I.D.
17	17. DART SUB	0.70	6.500	2.250
16	16. 15*HWDP	136.42	5.000	
15	15. X/O	1.10	8.000	2.813
14	14. 2*DC	17.98	8.000	2.813
13	13. JAR	10.40	7.750	2.750
12	12. 6*DC	54.43	8.000	2.813
11	11. X/O	0.56	9.500	2.813
10	10. DRILLCOLLAR	8.69	9.500	3.000
9	9. DRILLCOLLAR	8.95	9.500	3.000
8	8. STABILISER	1.42	17.250	3.000
7	7. FLOAT SUB	0.83	9.500	
6	6. MPT-TOOL	6.47	9.500	
5	5. RLL-TOOL	5.51	9.500	3.500
4	4. PIN x PIN X/O,	0.56	9.500	
3	3. STABILISER	1.88	17.500	3.000
2	2. SPERRY-DRILL	9.46	9.625	
1	1. HTC MAX GT-PT09	0.42	17.500	

Comments	MWD Performance
POOH TO CHANGE BIT. DRILLING STOPPAGES EXPERIENCED DUE TO FLOW LINE BLOCKAGES.	Max. Temp. : 46.0 deg C Survey/ TF%: 94 / 0 DGR RT/Rec%: 100 / 100 EWR RT/Rec%: 100 / 100 CNP RT/Rec%: 0 / 0 SFD RT/Rec%: 0 / 0 SLD RT/Rec%: 0 / 0

Bitrun Summary

MWD Run Time Data	Drilling Data	Mud Data
MWD Run : 07	Start Depth: 1705.0 m	Mud type : GYPSUM
Rig Bit : 08	End Depth : 1975.0 m	Weight/Visc: 1.35 / 66.0
Hole Size: 17.50 in	Footage : 270.0 m	Chlorides : 4600
Run Start: 12:00 13-JUL-95	Flow Rate : 3760.00 lpm	PV / YP : 28 / 24
Run End : 21:15 16-JUL-95	R.P.M. : 90	Solids/Sand: 13.5 / 0.00
BRT hrs : 81.25	W.O.B. : 22 T	%Oil/ O:W : 0 / 0 :100
Circ.hrs : 58.80	R.O.P. : 5 m/hr	
Oper.hrs : 81.87	S.P.P : 280 bar	



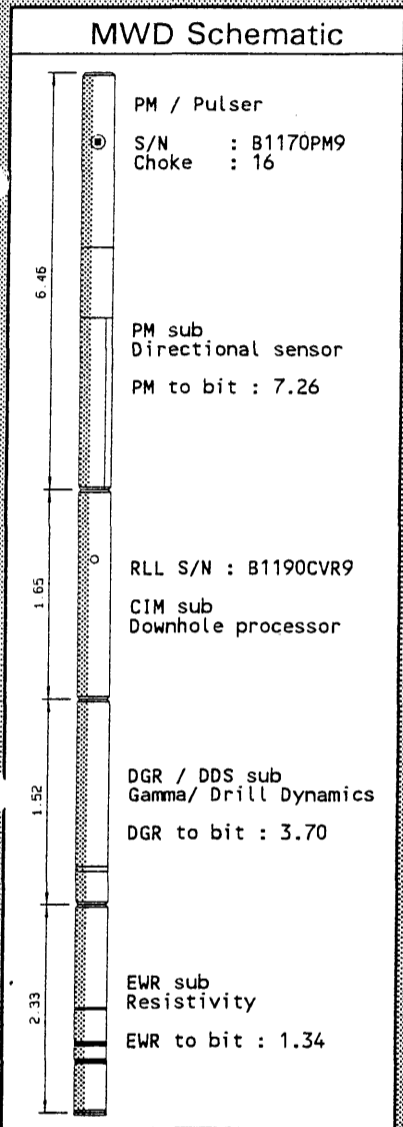
BHA Schematic

	Component	Length	O.D.	I.D.
17	17. DART SUB	0.70	6.500	2.250
16	16. 15*HWDP	136.42	5.000	
15	15. X/O	1.10	8.000	2.813
14	14. 2*DC	17.98	8.000	2.813
13	13. JAR	10.40	7.750	2.750
12	12. 6*DC	54.43	8.000	2.813
11	11. X/O	0.56	9.500	2.813
10	10. DRILLCOLLAR	8.69	9.500	3.000
9	9. DRILLCOLLAR	8.95	9.500	3.000
8	8. STABILISER	1.42	17.250	3.000
7	7. FLOAT SUB	0.83	9.500	
6	6. MPT-TOOL	6.47	9.500	
5	5. RLL-TOOL	5.51	9.500	2.375
4	4. PIN x PIN X/O,	0.56	9.500	
3	3. STABILISER	1.88	17.500	3.000
2	2. SPERRY-DRILL	9.46	9.625	
1	1. SMITH MSDGH	0.42	17.500	

Comments	MWD Performance
POOH DUE TO LOW ROP.	Max. Temp. : 52.0 deg C
	Survey/ TF%: 100 / 0
	DGR RT/Rec%: 100 / 0
	EWR RT/Rec%: 100 / 0
	CNP RT/Rec%: 0 / 0
	SFD RT/Rec%: 0 / 0
	SLD RT/Rec%: 0 / 0

Bitrun Summary

MWD Run Time Data	Drilling Data	Mud Data
MWD Run : 08	Start Depth: 1975.0 m	Mud type : GYPSUM
Rig Bit : 09	End Depth : 2161.0 m	Weight/Visc: 1.35 / 60.0
Hole Size: 17.50 in	Footage : 186.0 m	Chlorides : 4400
Run Start: 00:15 17-JUL-95	Flow Rate : 3840.00 lpm	PV / YP : 26 / 18
Run End : 01:00 20-JUL-95	R.P.M. : 120	Solids/Sand: 13.8 / 0.00
BRT hrs : 72.75	W.O.B. : 22 T	%Oil/ O:W : 0 / 0 :100
Circ.hrs : 61.20	R.O.P. : 3 m/hr	
Oper.hrs : 73.40	S.P.P : 290 bar	



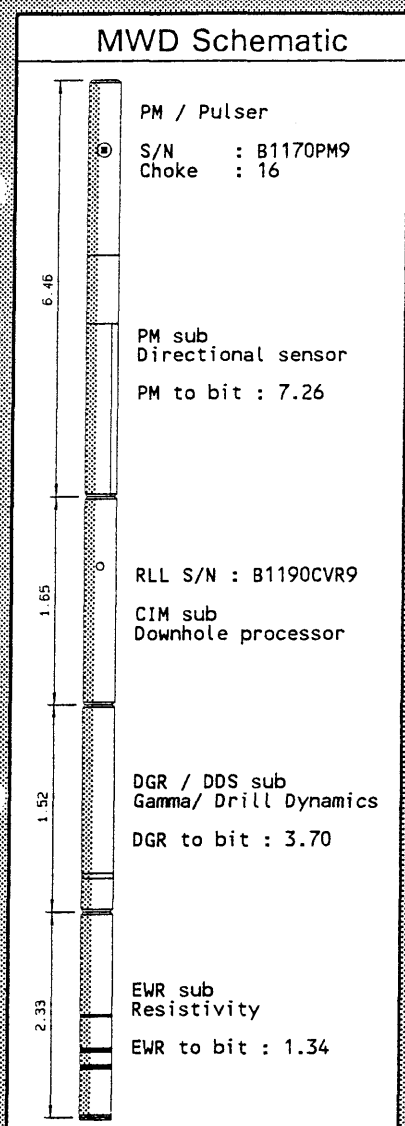
BHA Schematic

	Component	Length	O.D.	I.D.
15	15. DART SUB	0.70	6.500	2.250
14	14. 15*HWDP	136.42	5.000	
13	13. X/O	1.10	8.000	2.813
12	12. 2*DC	17.98	8.000	2.813
11	11. JAR	10.25	7.750	2.750
10	10. 9*DC	81.95	8.000	2.813
9	9. CROSSOVER	0.56	9.500	2.813
8	8. DRILLCOLLAR	8.69	9.500	3.000
7	7. STABILISER	1.42	17.250	3.000
6	6. DRILLCOLLAR	8.95	9.500	3.000
5	5. STABILISER	1.88	17.500	3.000
4	4. FLOAT SUB	0.78	9.500	
3	3. MPT-TOOL	6.47	9.500	
2	2. RLL-TOOL	5.51	9.500	2.375
1	1. REED MS 43ADM	0.43	17.500	

Comments	MWD Performance
POOH DUE TO LOW ROP. CHANGED BIT.	Max. Temp. : 60.0 deg C Survey/ TF%: 100 / 0 DGR RT/Rec%: 100 / 100 EWR RT/Rec%: 100 / 100 CNP RT/Rec%: 0 / 0 SFD RT/Rec%: 0 / 0 SLD RT/Rec%: 0 / 0

Bitrun Summary

MWD Run Time Data	Drilling Data	Mud Data
MWD Run : 09	Start Depth: 2160.0 m	Mud type : GYPSUM
Rig Bit : 10	End Depth : 2318.0 m	Weight/Visc: 1.35 / 63.0
Hole Size: 17.50 in	Footage : 158.0 m	Chlorides : 4600
Run Start: 02:20 20-JUL-95	Flow Rate : 4000.00 lpm	PV / YP : 26 / 17
Run End : 04:15 22-JUL-95	R.P.M. : 120	Solids/Sand: 13.6 / 0.00
BRT hrs : 49.92	W.O.B. : 18 T	%Oil/ O:W : 0 / 0 :100
Circ.hrs : 28.70	R.O.P. : 6 m/hr	
Oper.hrs : 50.88	S.P.P : 275 bar	



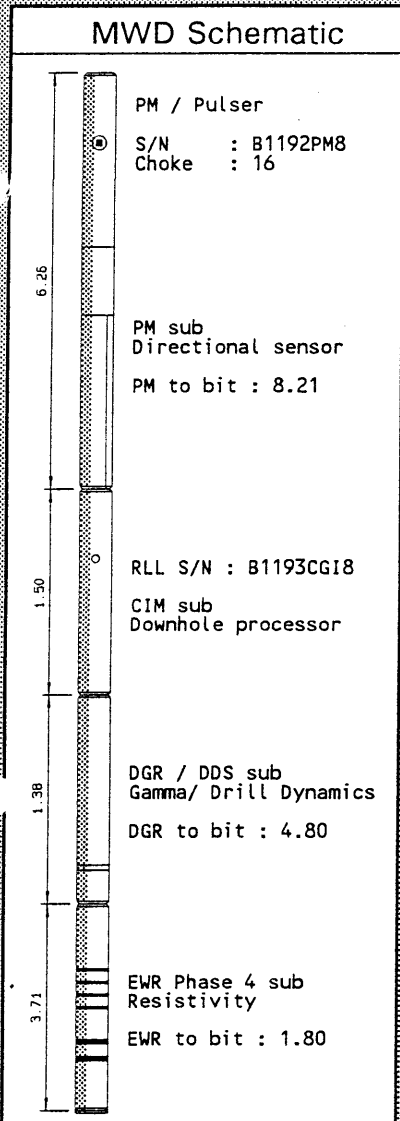
BHA Schematic

	Component	Length	O.D.	I.D.
15	15. DART SUB	0.70	6.500	2.250
14	14. 15*HWDP	136.42	5.000	
13	13. X/O	1.10	8.000	2.813
12	12. 2*DC	17.98	8.000	2.813
11	11. JAR	10.25	7.750	2.750
10	10. 9*DC	81.95	8.000	2.813
9	9. CROSSOVER	0.56	9.500	2.813
8	8. DRILLCOLLAR	8.69	9.500	3.000
7	7. STABILISER	1.42	17.250	3.000
6	6. DRILLCOLLAR	8.95	9.500	3.000
5	5. STABILISER	1.88	17.500	3.000
4	4. FLOAT SUB	0.78	9.500	
3	3. MPT-TOOL	6.47	9.500	
2	2. RLL-TOOL	5.51	9.500	2.375
1	1. MAX GT-PT00	0.43	17.500	

Comments	MWD Performance
BAD DETECTION THROUGHTOUT RUN DUE TO LOW BIT PRESSURE AND HIGH DRILLING NOISE. POOH TO RUN CASING. 100% RECORDED DATA	Max. Temp. : 61.0 deg C Survey/ TF%: 83 / 0 DGR RT/Rec%: 20 / 100 EWR RT/Rec%: 20 / 100 CNP RT/Rec%: 0 / 0 SFD RT/Rec%: 0 / 0 SLD RT/Rec%: 0 / 0

Bitrun Summary

MWD Run Time Data	Drilling Data	Mud Data
MWD Run : 10	Start Depth: 2264.0 m	Mud type : GYPSUM
Rig Bit : 12	End Depth : 2389.0 m	Weight/Visc: 1.35 / 57.0
Hole Size: 12.25 in	Footage : 125.0 m	Chlorides : 5100
Run Start: 00:55 25-JUL-95	Flow Rate : 2650.00 lpm	PV / YP : 26 / 20
Run End : 13:05 26-JUL-95	R.P.M. : 156	Solids/Sand: 13.6 / 0.00
BRT hrs : 36.17	W.O.B. : 18 T	%Oil/ O:W : 0 / 0 :100
Circ.hrs : 24.52	R.O.P. : 5 m/hr	
Oper.hrs : 36.75	S.P.P : 187 bar	



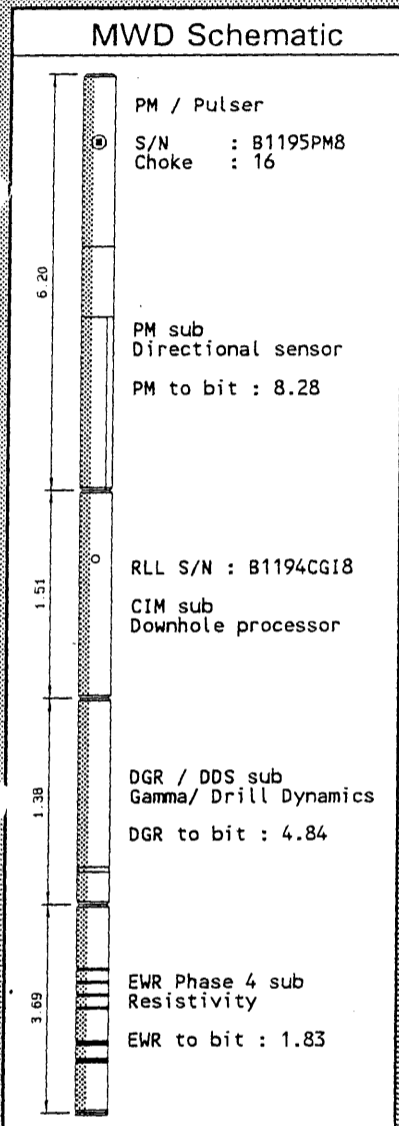
BHA Schematic

Component	Length	O.D.	I.D.
⑬			
⑫			
⑪			
⑩			
⑨			
⑧			
⑦			
⑥			
⑤			
④			
③			
②			
①			
13. DART SUB	0.70	6.500	2.250
12. 15*HWDP	136.42	5.000	2.500
11. X/O	1.10	8.000	2.813
10. 2*DC	17.98	8.000	2.813
9. JAR	10.25	7.750	2.750
8. 11*DC	100.31	8.000	2.813
7. STABILISER	2.30	12.250	3.000
6. DRILLCOLLAR	9.03	8.000	2.813
5. STABILISER	1.63	12.250	2.875
4. FLOAT SUB	0.73	8.000	2.875
3. MPT-TOOL	6.26	8.000	
2. RLL-TOOL	6.59	8.000	1.920
1. SMITH 12 1/4" MSDGH	0.30	12.250	

Comments	MWD Performance
MWD TOOL STOPPED PULSEING WHILE DRILLING CEMENT. NO REALTIME LOG FROM DRILLED FORMATION DUE TO BAD PULSER VALVE.	Max. Temp. : 73.0 deg C Survey/ TF%: 0 / 0 DGR RT/Rec%: 0 / 100 EWR RT/Rec%: 0 / 100 CNP RT/Rec%: 0 / 0 SFD RT/Rec%: 0 / 0 SLD RT/Rec%: 0 / 0

Bitrun Summary

MWD Run Time Data	Drilling Data	Mud Data
MWD Run : 11	Start Depth: 2375.0 m	Mud type : GYPSUM
Rig Bit : 16	End Depth : 2486.0 m	Weight/Visc: 1.35 / 70.0
Hole Size: 12.25 in	Footage : 111.0 m	Chlorides : 5400
Run Start: 09:48 28-JUL-95	Flow Rate : 2480.00 lpm	PV / YP : 31 / 20
Run End : 07:31 30-JUL-95	R.P.M. : 115	Solids/Sand: 13.0 / 0.25
BRT hrs : 45.72	W.O.B. : 20 T	%Oil/ O:W : 0 / 00:100
Circ.hrs : 33.18	R.O.P. : 3 m/hr	
Oper.hrs : 46.77	S.P.P : 190 bar	



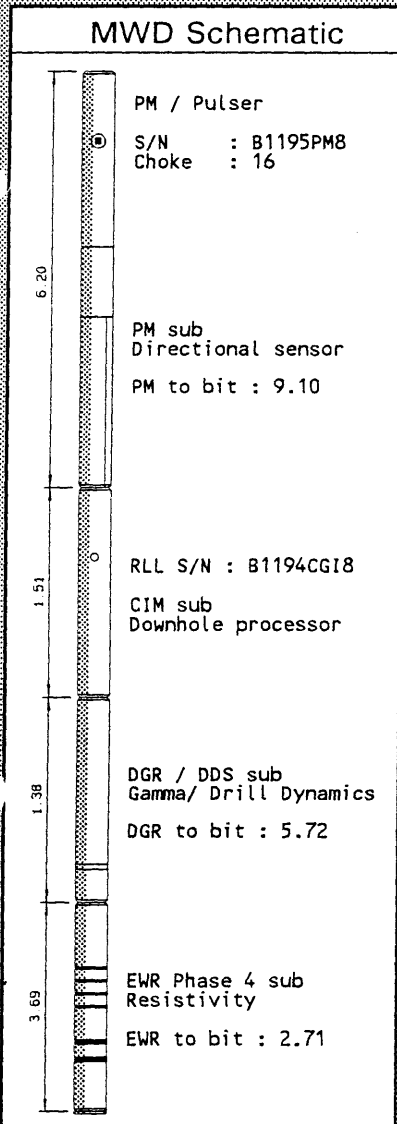
BHA Schematic

Component	Length	O.D.	I.D.
13. DART SUB	0.70	6.500	2.250
12. 15*HWDP	136.42	5.000	2.500
11. X/O	1.10	8.000	2.813
10. 2*DC	17.98	8.000	2.813
9. JAR	10.25	7.750	2.750
8. 11*DC	100.31	8.000	2.813
7. STABILISER	2.30	12.250	3.000
6. DRILLCOLLAR	9.03	8.000	2.813
5. STABILISER	1.63	12.250	2.875
4. FLOAT SUB	0.73	8.000	2.875
3. MPT-TOOL	6.20	8.000	
2. RLL-TOOL	6.58	8.000	1.920
1. HUGHES 12 1/4" ATMP-00	0.32	12.250	

Comments	MWD Performance
100 % RUN, POOH TO CHANGE BIT.	Max. Temp. : 59.0 deg C
FIRST PART OF RUN (2375 TO 2418) WAS REAMING TO OBTAIN A LOG OF PREVIOUSLY CORED INTERVAL.	Survey/ TF%: 100 / 0
	DGR RT/Rec%: 100 / 100
	EWR RT/Rec%: 100 / 100
	CNP RT/Rec%: 0 / 0
	SFD RT/Rec%: 0 / 0
	SLD RT/Rec%: 0 / 0

Bitrun Summary

MWD Run Time Data	Drilling Data	Mud Data
MWD Run : 12	Start Depth: 2486.0 m	Mud type : GYPSUM
Rig Bit : 17	End Depth : 2591.0 m	Weight/Visc: 1.35 / 65.0
Hole Size: 12.25 in	Footage : 105.0 m	Chlorides : 6000
Run Start: 09:15 30-JUL-95	Flow Rate : 2490.00 lpm	PV / YP : 24 / 25
Run End : 04:10 01-AUG-95	R.P.M. : 130	Solids/Sand: 14.0 / 0.30
BRT hrs : 42.92	W.O.B. : 22 T	%Oil/ O:W : 0 / 00:100
Circ.hrs : 34.71	R.O.P. : 3 m/hr	
Oper.hrs : 43.62	S.P.P : 192 bar	



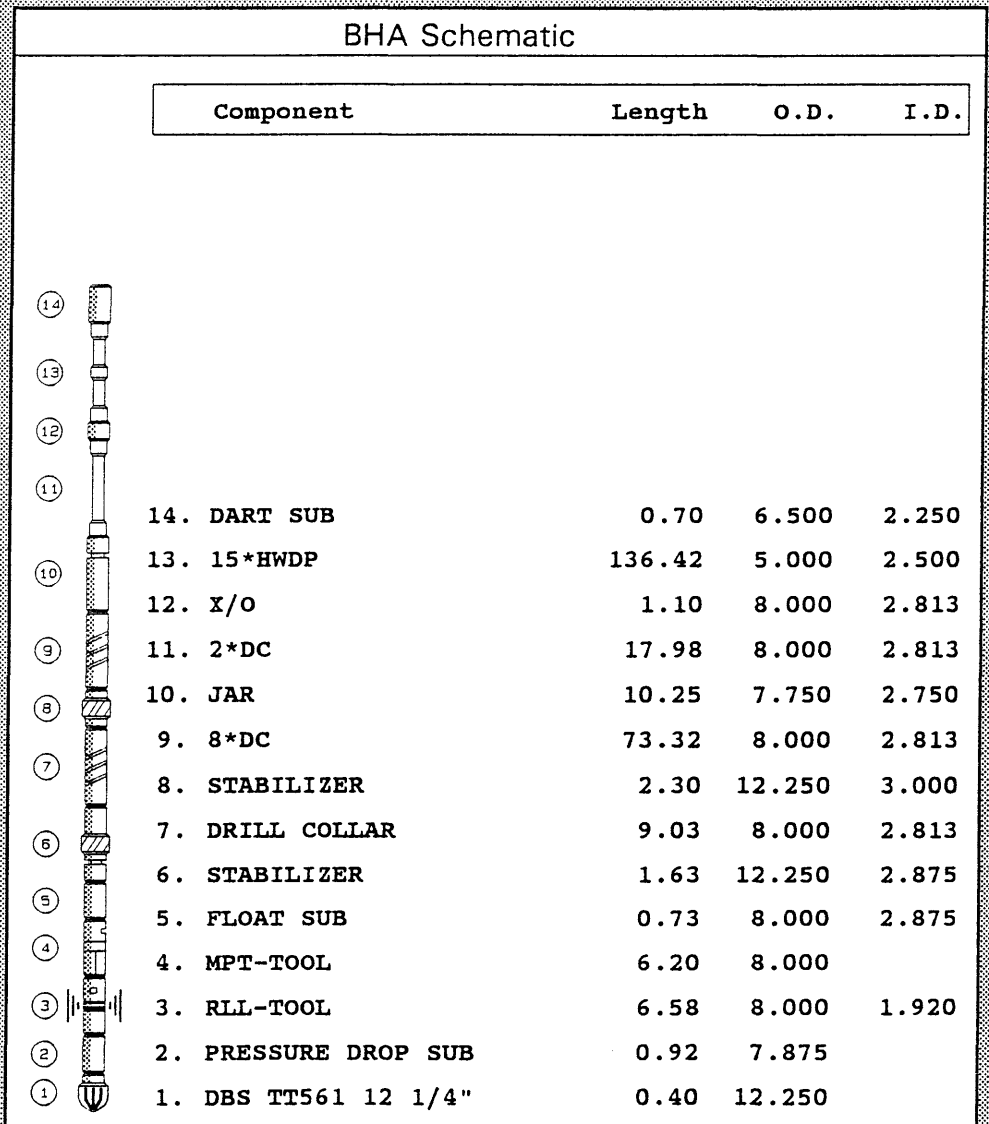
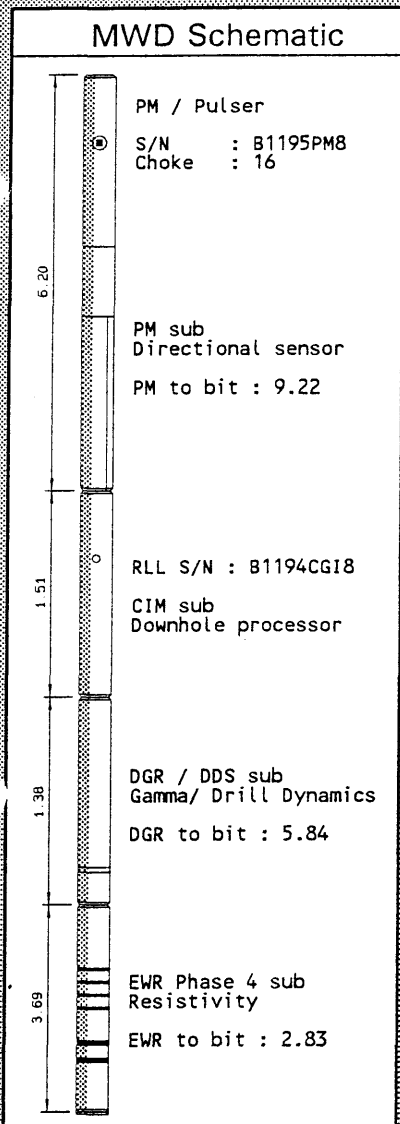
BHA Schematic

Component	Length	O.D.	I.D.
14. DART SUB	0.70	6.500	2.250
13. 15*HWDP	136.42	5.000	2.500
12. X/O	1.10	8.000	2.813
11. 2*DC	17.98	8.000	2.813
10. JAR	10.25	7.750	2.750
9. 11*DC	100.31	8.000	2.813
8. STABILIZER	2.30	12.250	3.000
7. DRILL COLLAR	9.03	8.000	2.813
6. STABILIZER	1.63	12.250	2.875
5. FLOAT SUB	0.73	8.000	2.875
4. MPT-TOOL	6.20	8.000	
3. RLL-TOOL	6.58	8.000	1.920
2. JUNK BASKET	0.88	9.500	2.688
1. SMITH 12 1/4" MSDGHC	0.32	12.250	

Comments	MWD Performance
100 % RUN, POOH TO CHANGE BIT.	Max. Temp. : 63.0 deg C
	Survey/ TF%: 100 / 0
	DGR RT/Rec%: 100 / 100
	EWR RT/Rec%: 100 / 100
	CNP RT/Rec%: 0 / 0
	SFD RT/Rec%: 0 / 0
	SLD RT/Rec%: 0 / 0

Bitrun Summary

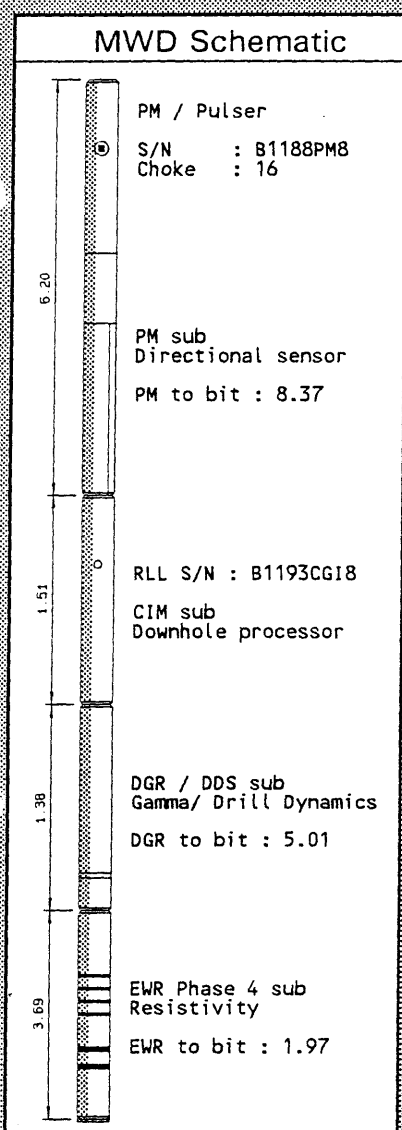
MWD Run Time Data	Drilling Data	Mud Data
MWD Run : 13	Start Depth: 2591.0 m	Mud type : GYPSUM
Rig Bit : 18	End Depth : 2771.0 m	Weight/Visc: 1.35 / 84.0
Hole Size: 12.25 in	Footage : 180.0 m	Chlorides : 5500
Run Start: 05:43 01-AUG-95	Flow Rate : 3080.00 lpm	PV / YP : 26 / 18
Run End : 12:00 05-AUG-95	R.P.M. : 150	Solids/Sand: 14.4 / 0.25
BRT hrs : 102.28	W.O.B. : 15 T	%Oil/ O:W : 0 / 00:100
Circ.hrs : 80.95	R.O.P. : 2 m/hr	
Oper.hrs : 62.62	S.P.P : 270 bar	



Comments	MWD Performance
<p>TOOL STOPPED PULSING. CONTINUED DRILLING UNTIL TWIST @ JARS. FISH @ SURFACE SHOWED EVIDENCE OF TUFF DRILLING CONDITIONS: DRILL COLLARS 30K ft/lbs OVERTORQED, 1.5" UNDERGUAGE ON STAB ALL EWR ANTENNAS RATTLING LOOSE. PULSER VALVE BODY WASHED. SEVERAL ATTEMPTS TO READ TOOL - NO SUCCESS. NO GREASE GUN TEST DUE TO WASHED OUT VALVE BODY.</p>	<p>Max. Temp. : 57.9 deg C Survey/ TF%: 88 / 0 DGR RT/Rec%: 88 / 0 EWR RT/Rec%: 88 / 0 CNP RT/Rec%: 0 / 0 SFD RT/Rec%: 0 / 0 SLD RT/Rec%: 0 / 0</p>

Bitrun Summary

MWD Run Time Data	Drilling Data	Mud Data
MWD Run : 14	Start Depth: 2771.0 m	Mud type : GYPSUM
Rig Bit : 20	End Depth : 2846.0 m	Weight/Visc: 1.35 / 66.0
Hole Size: 12.25 in	Footage : 75.0 m	Chlorides : 5400
Run Start: 17:32 05-AUG-95	Flow Rate : 3076.00 lpm	PV / YP : 25 / 18
Run End : 08:00 07-AUG-95	R.P.M. : 140	Solids/Sand: 14.8 / 0.00
BRT hrs : 38.47	W.O.B. : 14 T	%Oil/ O:W : 0 / 00:100
Circ.hrs : 26.45	R.O.P. : 4 m/hr	
Oper.hrs : 38.82	S.P.P : 256 bar	



BHA Schematic

Component	Length	O.D.	I.D.
13. DART SUB	0.70	6.500	2.250
12. 15*HWDP	136.42	5.000	2.500
11. X/O	1.10	8.000	2.813
10. 2*DC	18.45	8.000	2.813
9. JAR	10.68	7.750	2.750
8. 11*DC	101.23	8.000	2.813
7. STABILIZER	1.85	12.250	2.813
6. DC	9.00	8.000	2.813
5. STABILIZER	1.76	12.250	2.875
4. FLOAT SUB	0.52	8.000	2.875
3. MPT-TOOL	6.28	8.000	
2. RLL-TOOL	6.59	8.000	1.920
1. HYCALOG DS77HSG 12 1/4"	0.47	12.250	

Comments	MWD Performance
WIPED INTERVAL (2724-2771)M TO COVER SECTION MISSED ON LAST RUN. TD 12 1/4" SECTION @ 2846M. 100% RUN.	Max. Temp. : 61.0 deg C
	Survey/ TF%: 100 / 0
	DGR RT/Rec%: 100 / 100
	EWR RT/Rec%: 100 / 100
	CNP RT/Rec%: 0 / 0
	SFD RT/Rec%: 0 / 0
	SLD RT/Rec%: 0 / 0