

PICKED LITHOLOGIES (Table 7)

Well	Nation	Sample Name	Upper Depth	Lower Depth	Sample Type	Lithology Description
6406/2-3T3	NOR	96024-497	4587	4587	CUT	<u>Clyst, Pa Yel Brn, Sndy</u>
6406/2-3T3	NOR	96024-498A	4596	4596	CUT	<u>Sh. med dk gy + 30% Clyst, Pa Yel Brn, Sndy</u>
6406/2-3T3	NOR	96024-499A	4605	4605	CUT	<u>Sh. med dk gy + 30% Clyst, Pa Yel Brn, Sndy</u>
6406/2-3T3	NOR	96024-500A	4614	4614	CUT	<u>Sh. gy blk + 40% Sh, lt olv gy</u>
6406/2-3T3	NOR	96024-502	4632	4632	CUT	<u>Sh, dk gy</u>
6406/2-3T3	NOR	96024-503A	4659	4659	CUT	<u>Clyst. brn gy + 20% Sh, gy blk + mnr Sst, v lt gy</u>
6406/2-3T3	NOR	96024-505	4677	4677	CUT	<u>Coal / Sh, carb, brn blk</u>
6406/2-3T3	NOR	96024-506A	4686	4686	CUT	<u>Coal + 40% Sh. brn blk</u>
6406/2-3T3	NOR	96024-507A	4695	4695	CUT	<u>Sh. brn gy. dol</u>
6406/2-3T3	NOR	96024-508A	4704	4704	CUT	<u>Sh. brn gy. dol + 10% Sh, gy blk</u>
6406/2-3T3	NOR	96024-509A	4713	4713	CUT	<u>Sh. gy blk. dol + 20% Sst, lt med gy</u>
6406/2-3T3	NOR	96024-511A	4731	4731	CUT	<u>Clyst, lt med gy, sndy + 20% Sh. gy blk</u>
6406/2-3T3	NOR	96024-512A	4740	4740	CUT	<u>Clyst. brn gy. sndy + 30% Sh, gy blk</u>
6406/2-3T3	NOR	96024-513A	4749	4749	CUT	<u>Clyst. brn gy + 30% Sh, dk gy</u>
6406/2-3T3	NOR	96024-515	4767	4767	CUT	<u>Dol?, brn blk, sndy</u>
6406/2-3T3	NOR	96024-516	4776	4776	CUT	<u>Dol?, brn blk, sndy</u>
6406/2-3T3	NOR	96024-526A	4866	4866	CUT	<u>Sh. dk gy + 40% Sst, lt med gy + mnr Sst, wh</u>
6406/2-3T3	NOR	96024-530A	4902	4902	CUT	<u>Sh. brn gy + 20% Sst, lt olv gy + mnr Anhyd</u>
6406/2-3T3	NOR	96024-531A	4911	4911	CUT	<u>Sh. dk gy. sndy + 20% Sst, lt olv gy + 10% Anhyd</u>
6406/2-3T3	NOR	96024-533A	4929	4929	CUT	<u>Sh. gy blk. sndy + 40% Sst, pa brn + mnr Anhyd</u>
6406/2-3T3	NOR	96024-535A	4947	4947	CUT	<u>Sst, pa yel brn + 20% Sd + 10% Sh. dk gy + mnr Anhyd</u>
6406/2-3T3	NOR	96024-539A	4983	4983	CUT	<u>Sst, pa yel brn + 20% Sd + 10% Sh. dk gy</u>
6406/2-3T3	NOR	96024-541A	5001	5001	CUT	<u>Sst, lt gy + 40% Sh. med gy</u>
6406/2-3T3	NOR	96024-548A	5064	5064	CUT	<u>Sst, lt gy + 30% Sh. dk gy + 20% Sh, brn blk, carb</u>
6406/2-3T3	NOR	96024-554A	5118	5118	CUT	<u>Sst, lt olv gy + 10% Sh. med dk gy</u>
6406/2-3T3	NOR	96024-555A	5127	5127	CUT	<u>Sst, lt olv gy + 10% Sh. med dk gy + mnr Sst, v lt gy</u>
6406/2-3T3	NOR	96024-556A	5136	5136	CUT	<u>Sst, brn gy + 20% Sh. dk gy + mnr Sst, v lt gy</u>
6406/2-3T3	NOR	96024-557A	5145	5145	CUT	<u>Sst, brn gy + 20% Sh. gy blk + mnr Sst, v lt gy</u>
6406/2-3T3	NOR	96024-558A	5154	5154	CUT	<u>Sst, olv gy + 30% Sh. med dk gy + mnr Sst, v lt gy</u>
6406/2-3T3	NOR	96024-561A	5181	5181	CUT	<u>Sst, olv gy + 10% Sh. dk gy + mnr Sst, wh</u>
6406/2-3T3	NOR	96024-565A	5217	5217	CUT	<u>Sst, brn blk + 30% Sh. brn blk. sndy</u>
6406/2-3T3	NOR	96024-566A	5226	5226	CUT	<u>Sst, olv gy + 10% Sh. dk gy + mnr Sst, wh</u>
6406/2-3T3	NOR	96024-567A	5235	5235	CUT	<u>Sst, lt gy + 40% Sh. dk gy. dol</u>
6406/2-3T3	NOR	96024-569A	5253	5253	CUT	<u>Sst, dk yel brn + 30% Sh. dk yel brn. dol</u>

Picked lithology is underlined.

TOC and Rock Eval Pyrolysis Data (Table 8)

Well Name	Nation	Sample Name	Upper depth	Lower depth	Sample Type	Picked Lithology	S1 mg/g	S2 mg/g	S3 mg/g	Tmax deg C	TOC % wt
6406/2-3	NOR	96024-1AX	1420.0	1420.0	SE Cuttings	Clyst, med gy, calc	0.18	0.72	0.98	415	0.62
6406/2-3	NOR	96024-5AX	1460.0	1460.0	SE Cuttings	Clyst, med gy, calc	0.43	1.01	1.22	404	0.63
6406/2-3	NOR	96024-9AX	1500.0	1500.0	SE Cuttings	Clyst, med gy, calc	0.60	1.21	1.24	410	0.73
6406/2-3	NOR	96024-13AX	1540.0	1540.0	SE Cuttings	Clyst, lt olv gy, calc	0.62	1.46	1.36	400	0.75
6406/2-3	NOR	96024-17AX	1580.0	1580.0	SE Cuttings	Clyst, lt olv gy, calc	0.70	1.57	1.76	405	0.82
6406/2-3	NOR	96024-21AX	1620.0	1620.0	SE Cuttings	Clyst, lt olv gy, calc	0.62	2.15	1.71	415	0.90
6406/2-3	NOR	96024-25AX	1660.0	1660.0	SE Cuttings	Clyst, lt olv gy, calc	0.74	2.29	1.78	405	0.92
6406/2-3	NOR	96024-29AX	1700.0	1700.0	SE Cuttings	Clyst, lt olv gy, calc	0.59	2.23	1.72	408	0.92
6406/2-3	NOR	96024-33AX	1740.0	1740.0	SE Cuttings	Clyst, lt olv gy, calc	0.90	2.57	1.71	410	0.98
6406/2-3	NOR	96024-37AX	1780.0	1780.0	SE Cuttings	Clyst, olv gy	0.48	2.12	1.49	395	0.93
6406/2-3	NOR	96024-41AX	1820.0	1820.0	SE Cuttings	Clyst, lt olv gy, calc	0.64	2.06	2.08	406	1.02
6406/2-3	NOR	96024-45AX	1860.0	1860.0	SE Cuttings	Clyst, lt olv gy, calc	0.48	1.94	2.24	399	0.91
6406/2-3	NOR	96024-49AX	1900.0	1900.0	SE Cuttings	Clyst, lt olv gy, calc	0.44	1.69	1.49	407	0.98
6406/2-3	NOR	96024-53AX	1940.0	1940.0	SE Cuttings	Clyst, olv gy	0.70	5.00	2.39	408	2.89
6406/2-3	NOR	96024-57AX	1980.0	1980.0	SE Cuttings	Clyst, lt olv gy	1.03	4.26	1.84	405	1.84
6406/2-3	NOR	96024-61AX	2020.0	2020.0	SE Cuttings	Clyst, brn gy	2.14	7.05	2.11	409	2.62
6406/2-3	NOR	96024-65AX	2060.0	2060.0	SE Cuttings	Clyst, lt olv gy	1.83	5.29	1.69	407	1.74
6406/2-3	NOR	96024-69AX	2100.0	2100.0	SE Cuttings	Clyst, lt olv gy	0.65	2.75	1.23	398	1.11
6406/2-3	NOR	96024-73AX	2140.0	2140.0	SE Cuttings	Clyst, brn gy	0.36	2.86	1.53	380	1.37
6406/2-3	NOR	96024-77AX	2180.0	2180.0	SE Cuttings	Clyst, olv blk	0.34	3.10	1.62	377	0.89
6406/2-3	NOR	96024-81AX	2220.0	2220.0	SE Cuttings	Clyst, pa olv gy	0.21	1.71	1.19	390	0.57
6406/2-3	NOR	96024-85AX	2260.0	2260.0	SE Cuttings	Clyst, lt olv gy	0.19	1.30	1.10	394	0.66
6406/2-3	NOR	96024-89AX	2300.0	2300.0	SE Cuttings	Clyst, dk rd brn	0.13	0.80	1.22	386	0.29
6406/2-3	NOR	96024-93AX	2340.0	2340.0	SE Cuttings	Clyst, olv gy	0.16	0.81	1.63	443*	0.46
6406/2-3	NOR	96024-97AX	2380.0	2380.0	SE Cuttings	Clyst, olv blk	0.31	1.70	0.85	415	0.84
6406/2-3	NOR	96024-101AX	2420.0	2420.0	SE Cuttings	Clyst, olv gy	0.92	2.55	1.05	383	1.26

TOC and Rock Eval Pyrolysis Data (Table 8)

Well Name	Nation	Sample Name	Upper depth	Lower depth	Sample Type	Picked Lithology	S1 mg/g	S2 mg/g	S3 mg/g	Tmax deg C	TOC % wt
6406/2-3	NOR	96024-103AX	2440.0	2440.0	SE Cuttings	Clyst, lt olv gy	0.51	0.67	2.00	387	0.63
6406/2-3	NOR	96024-107AX	2480.0	2480.0	SE Cuttings	Clyst, lt olv gy	0.15	0.70	1.54	404	0.52
6406/2-3	NOR	96024-109AX	2500.0	2500.0	SE Cuttings	Clyst, med gy	0.33	1.55	1.25	369	0.74
6406/2-3	NOR	96024-113AX	2540.0	2540.0	SE Cuttings	Clyst, med gy	0.37	1.78	0.78	407	1.05
6406/2-3	NOR	96024-117AX	2580.0	2580.0	SE Cuttings	Clyst, med gy	0.23	0.90	0.68	392	0.86
6406/2-3	NOR	96024-121AX	2620.0	2620.0	SE Cuttings	Clyst, med gy	0.25	1.37	1.07	382	0.89
6406/2-3	NOR	96024-125AX	2660.0	2660.0	SE Cuttings	Clyst, med gy	0.14	1.28	0.65	424	0.91
6406/2-3	NOR	96024-129AX	2700.0	2700.0	SE Cuttings	Clyst, med gy	0.62	1.77	0.72	426	1.02
6406/2-3	NOR	96024-133AX	2740.0	2740.0	SE Cuttings	Clyst, med dk gy	0.26	2.09	0.99	387	0.95
6406/2-3	NOR	96024-137AX	2780.0	2780.0	SE Cuttings	Clyst, med dk gy	0.33	1.37	1.10	422	0.93
6406/2-3	NOR	96024-141AX	2820.0	2820.0	SE Cuttings	Clyst, med dk gy	0.19	0.93	0.98	423	0.79
6406/2-3	NOR	96024-143AX	2840.0	2840.0	SE Cuttings	Clyst, med dk gy	0.90	1.84	1.00	423	0.98
6406/2-3	NOR	96024-145AX	2860.0	2860.0	SE Cuttings	Clyst, lt olv gy	0.19	1.11	0.63	432	0.83
6406/2-3	NOR	96024-149AX	2900.0	2900.0	SE Cuttings	Clyst, med gy	0.21	1.21	0.22	433	0.93
6406/2-3	NOR	96024-153AX	2940.0	2940.0	SE Cuttings	Clyst, med gy	0.22	1.45	1.25	433	0.96
6406/2-3	NOR	96024-157AX	2980.0	2980.0	SE Cuttings	Clyst, med dk gy	0.27	1.53	0.31	426	1.08
6406/2-3	NOR	96024-161AX	3020.0	3020.0	SE Cuttings	Clyst, med gy	0.49	3.03	0.80	427	1.15
6406/2-3	NOR	96024-165AX	3060.0	3060.0	SE Cuttings	Clyst, pa yel brn, calc	0.25	1.51	0.45	427	1.12
6406/2-3	NOR	96024-169AX	3100.0	3100.0	SE Cuttings	Clyst, med gy	0.22	1.35	0.25	427	1.18
6406/2-3	NOR	96024-173AX	3140.0	3140.0	SE Cuttings	Clyst, med gy	0.35	1.80	0.23	428	1.01
6406/2-3	NOR	96024-177AX	3180.0	3180.0	SE Cuttings	Clyst, med gy	0.15	1.13	0.27	429	0.96
6406/2-3	NOR	96024-181AX	3220.0	3220.0	SE Cuttings	Clyst, med dk gy	0.22	1.39	0.21	431	0.97
6406/2-3	NOR	96024-185AX	3260.0	3260.0	SE Cuttings	Clyst, lt med gy	0.21	1.84	0.41	433	0.97
6406/2-3	NOR	96024-189AX	3300.0	3300.0	SE Cuttings	Clyst, pa yel brn, calc	0.22	2.50	1.30	432	1.06
6406/2-3	NOR	96024-193AX	3340.0	3340.0	SE Cuttings	Clyst, med gy	0.21	1.66	0.35	432	1.05
6406/2-3	NOR	96024-197AX	3380.0	3380.0	SE Cuttings	Clyst, lt gy	0.27	1.79	0.43	430	0.98

RL/MEMO/98/661

Page 83 of 89

TOC and Rock Eval Pyrolysis Data (Table 8)

Well Name	Nation	Sample Name	Upper depth	Lower depth	Sample Type	Picked Lithology	S1 mg/g	S2 mg/g	S3 mg/g	Tmax deg C	TOC % wt
6406/2-3	NOR	96024-201AX	3420.0	3420.0	SE Cuttings	Clyst, med dk gy	0.20	1.81	0.32	431	1.06
6406/2-3	NOR	96024-205AX	3460.0	3460.0	SE Cuttings	Clyst, med dk gy	0.25	2.14	0.85	430	1.07
6406/2-3	NOR	96024-211AX	3520.0	3520.0	SE Cuttings	Clyst, dk gy	0.32	2.51	0.46	430	1.32
6406/2-3	NOR	96024-215AX	3560.0	3560.0	SE Cuttings	Clyst, dk gy	0.23	2.33	0.29	433	1.08
6406/2-3	NOR	96024-219AX	3600.0	3600.0	SE Cuttings	Clyst, dusk yel brn	0.23	2.13	0.20	434	1.14
6406/2-3	NOR	96024-223AX	3640.0	3640.0	SE Cuttings	Clyst, med dk gy	0.35	2.46	0.21	430	1.22
6406/2-3	NOR	96024-227AX	3680.0	3680.0	SE Cuttings	Clyst, dusk yel brn	0.31	2.70	0.24	433	1.20
6406/2-3	NOR	96024-231AX	3720.0	3720.0	SE Cuttings	Clyst, pa yel brn	0.26	2.43	0.66	433	1.07
6406/2-3	NOR	96024-235AX	3760.0	3760.0	SE Cuttings	Clyst, med dk gy	0.30	2.48	0.40	434	1.16
6406/2-3	NOR	96024-239AX	3800.0	3800.0	SE Cuttings	Clyst, med dk gy	0.25	2.20	0.33	435	1.23
6406/2-3	NOR	96024-243AX	3840.0	3840.0	SE Cuttings	Clyst, lt olv gy	0.24	1.73	1.42	432	1.06
6406/2-3	NOR	96024-247AX	3880.0	3880.0	SE Cuttings	Clyst, med dk gy	0.26	1.61	0.25	434	1.11
6406/2-3	NOR	96024-251AX	3920.0	3920.0	SE Cuttings	Clyst, med dk gy	0.27	2.14	0.33	437	1.23
6406/2-3	NOR	96024-255AX	3960.0	3960.0	SE Cuttings	Clyst, med dk gy	0.24	1.74	0.50	430	1.06
6406/2-3	NOR	96024-259AX	4000.0	4000.0	SE Cuttings	Clyst, med dk gy	0.17	1.93	0.47	439	1.18
6406/2-3	NOR	96024-263AX	4036.0	4036.0	SE Cuttings	Clyst, lt med gy	0.22	0.99	0.12	428	0.91
6406/2-3	NOR	96024-267AX	4072.0	4072.0	SE Cuttings	Clyst, olv gy	0.20	2.44	0.69	436	1.14
6406/2-3	NOR	96024-271AX	4108.0	4108.0	SE Cuttings	Clyst, lt olv gy	0.18	1.55	1.38	435	1.01
6406/2-3	NOR	96024-276AX	4152.0	4152.0	SE Cuttings	Clyst, med gy	0.17	1.11	0.19	438	0.95
6406/2-3	NOR	96024-280AX	4188.0	4188.0	SE Cuttings	Clyst, med dk gy	0.29	1.02	0.41	438	1.08
6406/2-3	NOR	96024-284AX	4224.0	4224.0	SE Cuttings	Clyst, med dk gy	0.18	2.35	0.45	437	1.29
6406/2-3	NOR	96024-288AX	4269.0	4269.0	SE Cuttings	Clyst, dk yel brn	0.15	1.37	0.36	442	1.58
6406/2-3	NOR	96024-292AX	4305.0	4305.0	SE Cuttings	Clyst, pa yel brn	0.21	2.49	0.73	441	1.76
6406/2-3	NOR	96024-297AX	4350.0	4350.0	SE Cuttings	Clyst, olv blk	0.34	2.62	0.63	438	1.43
6406/2-3	NOR	96024-301AX	4387.0	4387.0	SE Cuttings	Clyst, lt olv gy	0.18	1.32	0.24	436	0.91
6406/2-3	NOR	96024-305AX	4423.0	4423.0	SE Cuttings	Clyst, med dk gy	0.22	1.60	0.25	446	1.61

TOC and Rock Eval Pyrolysis Data (Table 8)

Well Name	Nation	Sample Name	Upper depth	Lower depth	Sample Type	Picked Lithology	S1 mg/g	S2 mg/g	S3 mg/g	Tmax deg C	TOC % wt
6406/2-3	NOR	96024-309AX	4459.0	4459.0	SE Cuttings	Clyst, med dk gy	0.20	1.80	0.61	436	1.13
6406/2-3	NOR	96024-313AX	4495.0	4495.0	SE Cuttings	Clyst, med dk gy	0.18	1.80	1.10	442	1.49
6406/2-3	NOR	96024-315AX	4512.0	4512.0	SE Cuttings	Clyst, pa yel brn	0.19	2.41	1.98	430	1.06
6406/2-3	NOR	96024-317AX	4530.0	4530.0	SE Cuttings	Clyst, olv blk	0.24	2.12	0.63	433	1.22
6406/2-3	NOR	96024-319AX	4548.0	4548.0	SE Cuttings	Clyst, olv blk	0.19	2.00	0.90	432	1.22
6406/2-3	NOR	96024-321AX	4566.0	4566.0	SE Cuttings	Clyst, pa yel brn	0.36	4.52	0.89	432	1.45

* - Tmax not reliable

TOC and Rock Eval Pyrolysis Data (Table 8)

Well	Nation	Sample Name	Upper Depth	Lower Depth	Sample Type	Picked Lithology	S1 mg/g	S2 mg/g	S3 mg/g	Tmax deg C	TOC % wt
6406/2-3T2	NOR	96024-347AX	3110.0	3110.0	SE Cuttings	Clyst, lt med gy	0.09	0.91	0.42	435	1.00
6406/2-3T2	NOR	96024-351AX	3150.0	3150.0	SE Cuttings	Clyst, lt med gy	0.15	1.22	0.82	433	0.93
6406/2-3T2	NOR	96024-354AX	3180.0	3180.0	SE Cuttings	Clyst, brn gy	0.09	1.07	0.59	426	1.09
6406/2-3T2	NOR	96024-357AX	3210.0	3210.0	SE Cuttings	Clyst, lt med gy	0.12	1.20	0.40	434	0.97
6406/2-3T2	NOR	96024-360AX	3240.0	3240.0	SE Cuttings	Clyst, med dk gy	0.09	1.62	0.14	435	1.10
6406/2-3T2	NOR	96024-363AX	3270.0	3270.0	SE Cuttings	Clyst, lt med gy	0.17	1.34	0.10	433	0.96
6406/2-3T2	NOR	96024-367AX	3310.0	3310.0	SE Cuttings	Clyst, lt med gy	0.15	1.56	0.68	434	1.16
6406/2-3T2	NOR	96024-369AX	3330.0	3330.0	SE Cuttings	Clyst, brn gy	0.15	1.25	0.43	435	1.15
6406/2-3T2	NOR	96024-371AX	3350.0	3350.0	SE Cuttings	Clyst, lt med gy	0.11	1.34	0.70	435	1.03
6406/2-3T2	NOR	96024-373AX	3370.0	3370.0	SE Cuttings	Clyst, lt med gy	0.14	1.08	0.26	435	1.00
6406/2-3T2	NOR	96024-375AX	3390.0	3390.0	SE Cuttings	Clyst, med dk gy	0.11	1.64	0.27	435	1.14
6406/2-3T2	NOR	96024-377AX	3410.0	3410.0	SE Cuttings	Clyst, lt med gy	0.06	1.14	0.35	433	0.97
6406/2-3T2	NOR	96024-379AX	3430.0	3430.0	SE Cuttings	Clyst, med dk gy	0.10	1.45	0.16	434	1.05
6406/2-3T2	NOR	96024-381AX	3450.0	3450.0	SE Cuttings	Clyst, brn gy	0.07	1.40	0.13	433	1.10
6406/2-3T2	NOR	96024-383AX	3470.0	3470.0	SE Cuttings	Clyst, brn gy	0.11	1.48	0.20	433	0.93
6406/2-3T2	NOR	96024-387AX	3510.0	3510.0	SE Cuttings	Clyst, brn gy	0.15	1.86	0.27	435	1.13
6406/2-3T2	NOR	96024-390AX	3540.0	3540.0	SE Cuttings	Clyst, brn gy	0.12	1.60	0.10	434	1.12
6406/2-3T2	NOR	96024-393AX	3570.0	3570.0	SE Cuttings	Clyst, brn gy	0.21	2.27	0.38	435	1.09
6406/2-3T2	NOR	96024-397AX	3610.0	3610.0	SE Cuttings	Clyst, med dk gy	0.13	2.20	1.31	435	0.99
6406/2-3T2	NOR	96024-401AX	3650.0	3650.0	SE Cuttings	Clyst, brn gy	0.16	1.77	0.60	437	1.18
6406/2-3T2	NOR	96024-405AX	3690.0	3690.0	SE Cuttings	Clyst, brn gy	0.14	1.92	0.54	437	1.00
6406/2-3T2	NOR	96024-409AX	3730.0	3730.0	SE Cuttings	Clyst, brn gy	0.17	2.30	0.43	437	1.18
6406/2-3T2	NOR	96024-413AX	3770.0	3770.0	SE Cuttings	Clyst, lt med gy	0.26	2.53	1.87	436	1.13
6406/2-3T2	NOR	96024-415AX	3790.0	3790.0	SE Cuttings	Clyst, brn gy	0.17	2.07	0.77	439	1.13
6406/2-3T2	NOR	96024-417AX	3810.0	3810.0	SE Cuttings	Clyst, med dk gy	0.08	0.96	0.63	438	0.94
6406/2-3T2	NOR	96024-420AX	3840.0	3840.0	SE Cuttings	Clyst, med dk gy	0.07	1.20	0.60	438	0.99
6406/2-3T2	NOR	96024-423AX	3870.0	3870.0	SE Cuttings	Clyst, med dk gy	0.11	1.02	0.32	437	1.04
6406/2-3T2	NOR	96024-427AX	3910.0	3910.0	SE Cuttings	Clyst, med dk gy	0.10	1.83	1.13	438	1.11
6406/2-3T2	NOR	96024-430AX	3940.0	3940.0	SE Cuttings	Clyst, med dk gy	0.16	1.48	1.00	437	1.08

TOC and Rock Eval Pyrolysis Data (Table 8)

Well	Nation	Sample Name	Upper Depth	Lower Depth	Sample Type	Picked Lithology	S1 mg/g	S2 mg/g	S3 mg/g	Tmax deg C	TOC % wt
6406/2-3T2	NOR	96024-433AX	3970.0	3970.0	SE Cuttings	Clyst, brn gy	0.13	1.28	4.88	421*	0.93
6406/2-3T2	NOR	96024-436AX	4000.0	4000.0	SE Cuttings	Clyst, med dk gy	0.14	2.09	0.46	438	1.15
6406/2-3T2	NOR	96024-438AX	4020.0	4020.0	SE Cuttings	Clyst, med dk gy	0.09	1.36	0.42	439	1.03
6406/2-3T2	NOR	96024-441AX	4050.0	4050.0	SE Cuttings	Clyst, med dk gy	0.08	0.85	0.25	439	1.07
6406/2-3T2	NOR	96024-444AX	4080.0	4080.0	SE Cuttings	Clyst, med dk gy	0.08	1.17	0.43	440	1.01
6406/2-3T2	NOR	96024-447AX	4110.0	4110.0	SE Cuttings	Clyst, med dk gy	0.11	1.28	0.44	434	1.05
6406/2-3T2	NOR	96024-450AX	4140.0	4140.0	SE Cuttings	Clyst, med dk gy	0.11	1.80	0.70	440	0.97
6406/2-3T2	NOR	96024-453AX	4170.0	4170.0	SE Cuttings	Clyst, med dk gy	0.11	0.95	0.61	443	0.99
6406/2-3T2	NOR	96024-456AX	4200.0	4200.0	SE Cuttings	Clyst, med dk gy	0.10	1.37	0.72	440	1.08
6406/2-3T2	NOR	96024-459AX	4230.0	4230.0	SE Cuttings	Clyst, med dk gy	0.15	1.50	0.81	444	1.60
6406/2-3T2	NOR	96024-462AX	4260.0	4260.0	SE Cuttings	Clyst, med dk gy	0.18	2.37	0.42	444	1.72
6406/2-3T2	NOR	96024-465AX	4290.0	4290.0	SE Cuttings	Clyst, med dk gy	0.16	1.71	1.29	443	2.10
6406/2-3T2	NOR	96024-468AX	4320.0	4320.0	SE Cuttings	Clyst, med dk gy	0.17	1.25	0.37	418*	0.91
6406/2-3T2	NOR	96024-471AX	4350.0	4350.0	SE Cuttings	Clyst, med dk gy	0.12	1.70	0.32	444	1.79
6406/2-3T2	NOR	96024-474AX	4380.0	4380.0	SE Cuttings	Clyst, med dk gy	0.14	1.38	0.99	451	2.31
6406/2-3T2	NOR	96024-475AX	4430.0	4430.0	SE Cuttings	Clyst, med dk gy	0.12	1.36	0.61	445	1.33
6406/2-3T2	NOR	96024-477AX	4460.0	4460.0	SE Cuttings	Clyst, med dk gy	0.11	1.32	0.41	445	1.20
6406/2-3T2	NOR	96024-480AX	4490.0	4490.0	SE Cuttings	Clyst, brn gy	0.13	1.85	1.33	434	1.16
6406/2-3T2	NOR	96024-483AX	4520.0	4520.0	SE Cuttings	Clyst, med dk gy	0.15	2.16	0.55	442	1.16
6406/2-3T2	NOR	96024-486AX	4550.0	4550.0	SE Cuttings	Clyst, med dk gy	0.13	0.93	3.31	431	0.95
6406/2-3T2	NOR	96024-487AX	4551.0	4551.0	SE Cuttings	Clyst, med dk gy	0.41	2.14	0.74	403*	0.88
6406/2-3T2	NOR	96024-488AX	4560.0	4560.0	SE Cuttings	Clyst, brn gy	0.25	1.09	0.52	441	1.19
6406/2-3T2	NOR	96024-489AX	4569.0	4569.0	SE Cuttings	Clyst, med dk gy	0.18	1.08	0.49	441	1.20
6406/2-3T2	NOR	96024-490AX	4578.0	4578.0	SE Cuttings	Clyst, med dk gy	0.19	1.50	0.41	435	1.21
6406/2-3T2	NOR	96024-491AX	4587.0	4587.0	SE Cuttings	Clyst, med dk gy	0.22	1.37	0.31	427	0.92
6406/2-3T2	NOR	96024-492AX	4596.0	4596.0	SE Cuttings	Clyst, brn gy	0.27	2.51	0.48	429	1.31
6406/2-3T2	NOR	96024-493AX	4605.0	4605.0	SE Cuttings	Clyst, brn gy	0.21	2.57	0.24	427	1.10
6406/2-3T2	NOR	96024-494AX	4614.0	4614.0	SE Cuttings	Clyst, brn gy	0.16	1.74	0.72	434	1.01
6406/2-3T2	NOR	96024-495AX	4623.0	4623.0	SE Cuttings	Clyst, olv gy	0.30	3.00	0.67	444	2.37
6406/2-3T2	NOR	96024-496AX	4632.0	4632.0	SE Cuttings	Clyst, brn gy	0.15	2.03	0.46	436	1.07

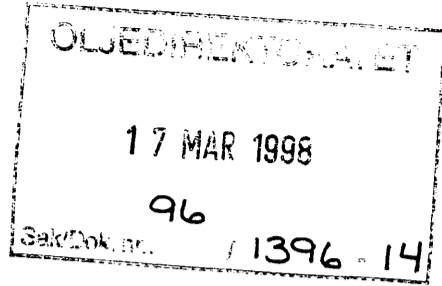
* - Tmax not reliable

TOC and Rock Eval Pyrolysis Data (Table 8)

Well	Nation	Sample Name	Upper Depth	Lower Depth	Sample Type	Picked Lithology	S1 mg/g	S2 mg/g	S3 mg/g	Tmax deg C	TOC % wt
6406/2-3T3	NOR	96024-497X	4587	4587	SE Cuttings	Clyst, Pa Yel Brn, Sndy	2.00	8.24	3.48	442	1.47
6406/2-3T3	NOR	96024-498AX	4596	4596	SE Cuttings	Sh, med dk gy	0.15	0.79	0.60	421	0.93
6406/2-3T3	NOR	96024-499AX	4605	4605	SE Cuttings	Sh, med dk gy	0.15	0.82	0.66	425	0.78
6406/2-3T3	NOR	96024-500AX	4614	4614	SE Cuttings	Sh, gy blk	0.16	1.28	0.53	439	1.56
6406/2-3T3	NOR	96024-502X	4632	4632	SE Cuttings	Sh, dk gy	0.37	2.80	1.42	426	1.32
6406/2-3T3	NOR	96024-503AX	4659	4659	SE Cuttings	Clyst, brn gy	0.17	1.95	0.65	438	1.23
6406/2-3T3	NOR	96024-505X	4677	4677	SE Cuttings	Coal / Sh, carb, brn blk	0.10	1.60	0.73	434	1.24
6406/2-3T3	NOR	96024-506AX	4686	4686	SE Cuttings	Sh, brn blk	0.11	1.10	0.53	437	1.56
6406/2-3T3	NOR	96024-507AX	4695	4695	SE Cuttings	Sh, brn gy, dol	0.10	1.13	0.56	437	1.23
6406/2-3T3	NOR	96024-508AX	4704	4704	SE Cuttings	Sh, brn gy, dol	0.11	1.35	0.68	436	0.82
6406/2-3T3	NOR	96024-509AX	4713	4713	SE Cuttings	Sh, gy blk, dol	0.11	0.74	0.36	436	0.84
6406/2-3T3	NOR	96024-511AX	4731	4731	SE Cuttings	Sh, gy blk	0.25	2.61	0.67	437	1.46
6406/2-3T3	NOR	96024-512AX	4740	4740	SE Cuttings	Clyst, brn gy, sndy	0.45	4.88	1.21	431	1.56
6406/2-3T3	NOR	96024-515X	4767	4767	SE Cuttings	Dol?, brn blk, sndy	0.11	2.08	0.64	438	1.07
6406/2-3T3	NOR	96024-516X	4776	4776	SE Cuttings	Dol?, brn blk, sndy	0.26	2.57	1.15	424	0.92
6406/2-3T3	NOR	96024-526AX	4866	4866	SE Cuttings	Sh, dk gy	6.83	9.06	0.99	383	2.46
6406/2-3T3	NOR	96024-530AX	4902	4902	SE Cuttings	Sh, brn gy	0.22	2.25	0.74	432	1.35
6406/2-3T3	NOR	96024-531AX	4911	4911	SE Cuttings	Sh, dk gy, sndy	0.13	2.44	0.63	436	0.98
6406/2-3T3	NOR	96024-533AX	4929	4929	SE Cuttings	Sh, gy blk, sndy	0.16	3.03	0.78	436	1.19
6406/2-3T3	NOR	96024-535AX	4947	4947	SE Cuttings	Sh, dk gy	0.10	1.28	0.49	440	0.91
6406/2-3T3	NOR	96024-539AX	4983	4983	SE Cuttings	Sh, dk gy	0.31	2.60	1.02	440	1.92
6406/2-3T3	NOR	96024-541AX	5001	5001	SE Cuttings	Sh, med gy	0.27	2.05	0.71	432	1.19
6406/2-3T3	NOR	96024-548AX	5064	5064	SE Cuttings	Sh, dk gy	0.18	2.20	3.63	417	1.24
6406/2-3T3	NOR	96024-554AX	5118	5118	SE Cuttings	Sh, med dk gy	0.18	2.40	3.15	425	1.21
6406/2-3T3	NOR	96024-555AX	5127	5127	SE Cuttings	Sh, med dk gy	0.27	2.68	13.84	396	1.22
6406/2-3T3	NOR	96024-556AX	5136	5136	SE Cuttings	Sh, dk gy	0.30	4.59	1.39	432	1.75
6406/2-3T3	NOR	96024-557AX	5145	5145	SE Cuttings	Sh, gy blk	0.21	2.68	2.03	420	1.40
6406/2-3T3	NOR	96024-558AX	5154	5154	SE Cuttings	Sh, med dk gy	0.22	3.26	0.93	430	1.42
6406/2-3T3	NOR	96024-561AX	5181	5181	SE Cuttings	Sh, dk gy	0.19	3.01	0.95	427	1.24
6406/2-3T3	NOR	96024-565AX	5217	5217	SE Cuttings	Sh, brn blk, sndy	0.25	2.82	0.68	432	0.99
6406/2-3T3	NOR	96024-566AX	5226	5226	SE Cuttings	Sh, dk gy	0.22	3.08	1.03	433	1.09
6406/2-3T3	NOR	96024-567AX	5235	5235	SE Cuttings	Sh, dk gy, dol	0.22	1.95	1.29	424	1.01
6406/2-3T3	NOR	96024-569AX	5253	5253	SE Cuttings	Sh, dk yel brn, dol	0.17	2.22	1.03	428	1.19

Extraction Separation data (Table 10)

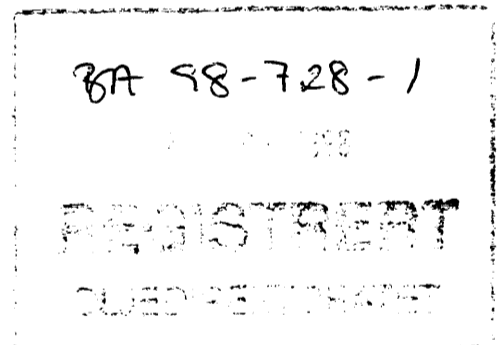
Well	Nation	Sample Name	Upper Depth	Lower Depth	Sample Type	Lith	Wt of Rock (g)	EDM mg/g
6406/2-3	NOR	96024-316A	4521.0	4521.0	Picked Ctgs	Clyst, pa yel brn	6.2	50.4
6406/2-3	NOR	96024-319A	4548.0	4548.0	Picked Ctgs	Clyst, olv blk	8.5	70.4
6406/2-3T2	NOR	96024-492A	4596.0	4596.0	Picked Ctgs	Clyst, brn gy	8.1	53.1
6406/2-3T3	NOR	96024-497	4587.0	4587.0	Bulk Ctgs	Clyst, Pa Yel Brn, Sndy	14.9	35.8
6406/2-3T3	NOR	96024-499A	4605.0	4605.0	Picked Ctgs	Sh, med dk gy	5.0	17.8
6406/2-3T3	NOR	96024-505	4677.0	4677.0	Bulk Ctgs	Coal / Sh, carb, brn blk	10.1	47.6
6406/2-3T3	NOR	96024-506A	4686.0	4686.0	Picked Ctgs	Sh, brn blk	4.5	28.4
6406/2-3T3	NOR	96024-511A	4731.0	4731.0	Picked Ctgs	Sh, gy blk	2.5	58.7
6406/2-3T3	NOR	96024-512A	4740.0	4740.0	Picked Ctgs	Clyst, brn gy, sndy	11.5	54.3
6406/2-3T3	NOR	96024-513A	4749.0	4749.0	Picked Ctgs	Clyst, brn gy	8.7	61.2



**On the occurrence and
composition of reservoir bitumen
in well 6406/2-3T3**

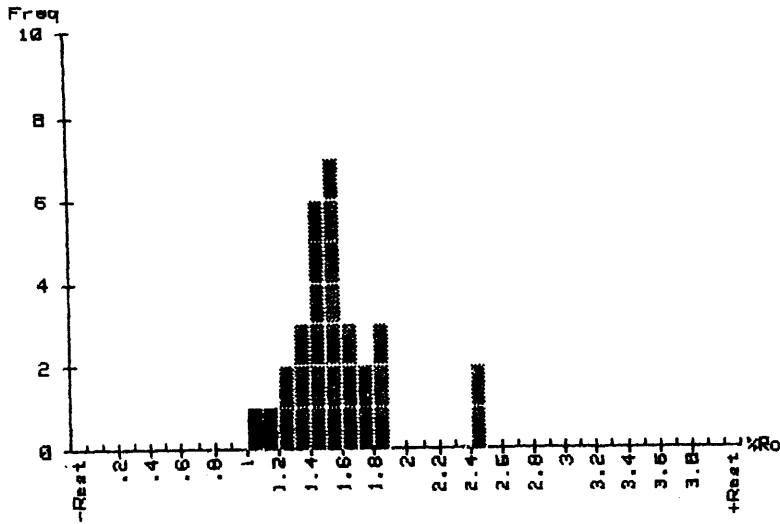
Appendices

Brian Horsfield



Beulardsteiner Feld 9, 52072 Aachen, Germany

October 1997



BH4
Krojen
concentrak

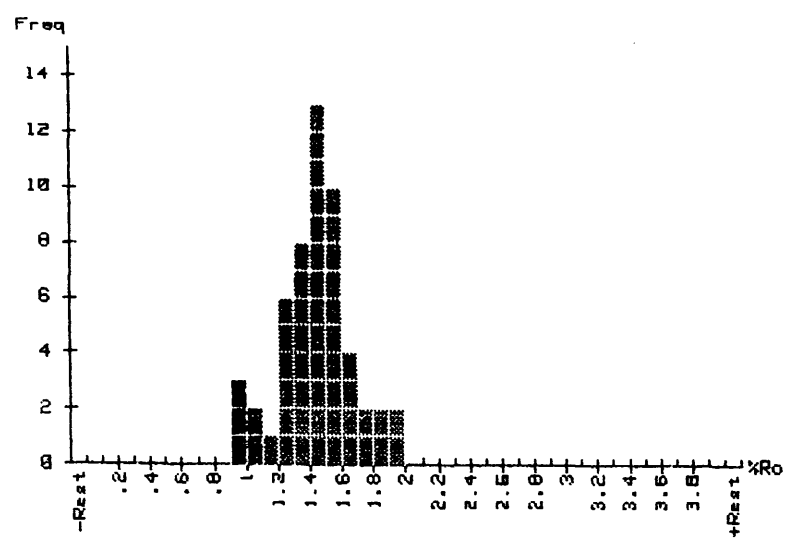
* Pop. 1 From 1.20 to 2.50 Mean= 1.60 St.D= .29 Total= 28

The indigenous Population is marked '*'.

No. of Measurements: 30
 Mean: 1.564
 Standard Deviation: .304
 Coeff. of Variation: .1941

	1	2	3	4	5	6	7	8	9	10
0	1.077	1.110	1.267	1.271	1.351	1.355	1.357	1.436	1.437	1.438
10	1.438	1.441	1.445	1.515	1.517	1.523	1.533	1.537	1.551	1.568
20	1.615	1.621	1.629	1.788	1.796	1.812	1.815	1.818	2.430	2.442

BH 21
Kerosen
Concentrate



* Pop. 1 From 1.10 to 2.00 Mean= 1.49 St.D= .19 Total= 48

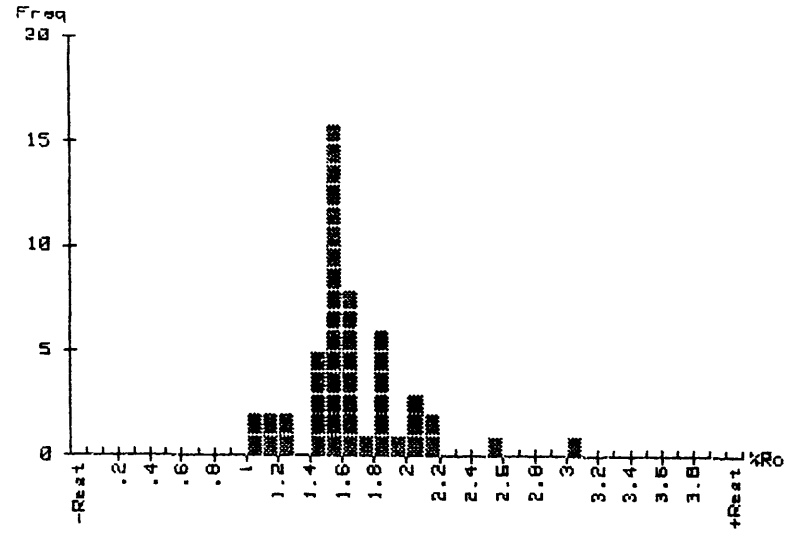
The indigenous Population is marked '*'.

No. of Measurements: 53
 Mean: 1.443
 Standard Deviation: .231
 Coeff. of Variation: .1604

	1	2	3	4	5	6	7	8	9	10
0	.962	.964	.983	1.065	1.086	1.107	1.226	1.227	1.228	1.239
10	1.241	1.273	1.310	1.313	1.324	1.349	1.353	1.355	1.380	1.396
20	1.428	1.429	1.430	1.432	1.452	1.454	1.455	1.460	1.464	1.467
30	1.467	1.478	1.482	1.512	1.514	1.514	1.516	1.518	1.528	1.535
40	1.546	1.549	1.590	1.667	1.674	1.683	1.689	1.702	1.792	1.819
50	1.890	1.946	1.993							

Fig. 1c

BH 22
kerogen
concentrate



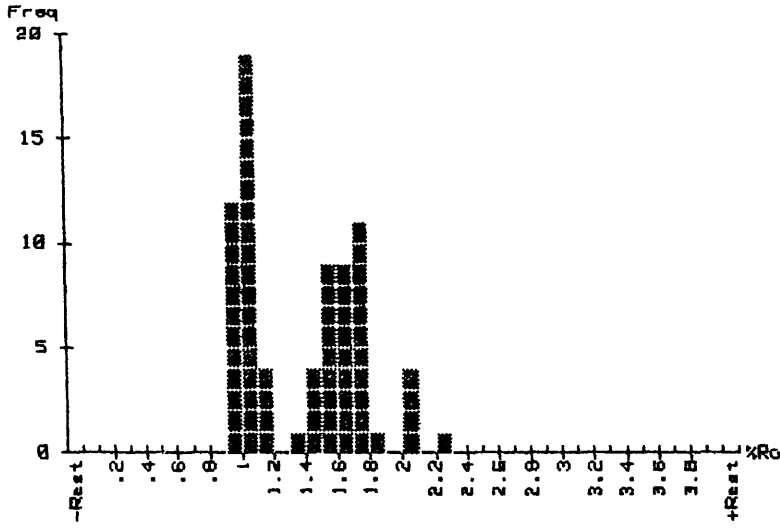
* Pop. 1 From 1.00 to 3.10 Mean= 1.66 St.D= .35 Total= 50

The indigenous Population is marked '*'.

No. of Measurements: 50
 Mean: 1.660
 Standard Deviation: .353
 Coeff. of Variation: .2128

	1	2	3	4	5	6	7	8	9	10
0	1.032	1.037	1.121	1.142	1.241	1.298	1.447	1.452	1.454	1.490
10	1.495	1.504	1.504	1.519	1.524	1.525	1.529	1.530	1.534	1.542
20	1.542	1.544	1.550	1.551	1.553	1.569	1.595	1.630	1.631	1.633
30	1.640	1.646	1.684	1.688	1.690	1.704	1.822	1.834	1.859	1.873
40	1.893	1.897	1.928	2.093	2.098	2.099	2.102	2.102	2.563	3.047

BH 23
Kerogen
concentrate

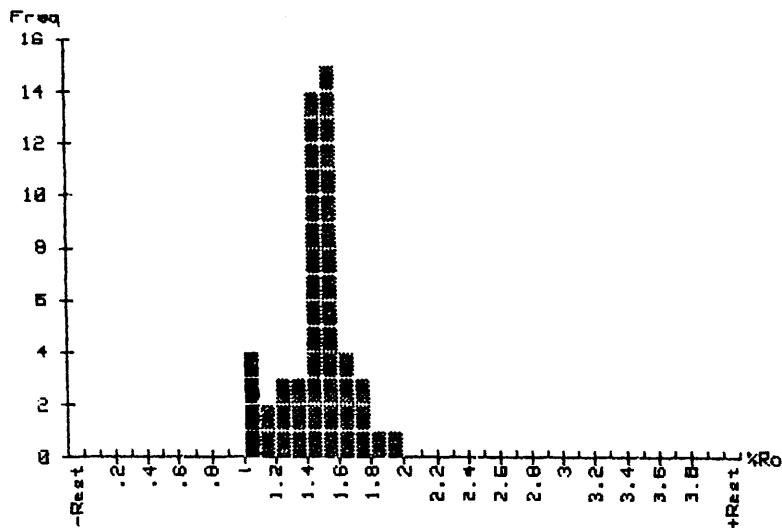


* Pop. 1 From .90 to 2.30 Mean= 1.38 St.D= .36 Total= 75

The indigenous Population is marked '*'.
No. of Measurements: 75

Mean: 1.379
Standard Deviation: .357
Coeff. of Variation: .2591

	1	2	3	4	5	6	7	8	9	10
0	.921	.943	.944	.946	.953	.953	.963	.965	.985	.985
10	.998	.998	1.000	1.011	1.024	1.030	1.034	1.038	1.039	1.042
20	1.045	1.046	1.048	1.058	1.060	1.061	1.073	1.074	1.086	1.092
30	1.097	1.125	1.149	1.150	1.155	1.309	1.475	1.481	1.485	1.493
40	1.502	1.535	1.545	1.548	1.561	1.566	1.571	1.574	1.578	1.602
50	1.634	1.634	1.640	1.641	1.646	1.651	1.655	1.664	1.710	1.715
60	1.721	1.721	1.724	1.724	1.731	1.739	1.741	1.750	1.773	1.862
70	2.017	2.022	2.049	2.063	2.269					



BH35
kerosene
concentrate

* Pop. 1 From 1.10 to 2.00 Mean= 1.50 St.D= .16 Total= 46

The indigenous Population is marked '*'.

No. of Measurements: 50
 Mean: 1.465
 Standard Deviation: .195
 Coeff. of Variation: .1328

	1	2	3	4	5	6	7	8	9	10
0	1.022	1.058	1.079	1.084	1.166	1.184	1.227	1.230	1.235	1.301
10	1.370	1.390	1.403	1.403	1.403	1.405	1.407	1.418	1.435	1.447
20	1.451	1.469	1.473	1.479	1.486	1.494	1.509	1.509	1.512	1.518
30	1.536	1.555	1.556	1.558	1.558	1.560	1.560	1.564	1.588	1.595
40	1.599	1.602	1.611	1.614	1.672	1.713	1.714	1.763	1.843	1.928