

Document Id. : R-EUG-0208
Reference Code :
Date : AUGUST 1993
Revision Number :

Title

GEOCHEMICAL DATA REPORT FOR WELL 7/8-3

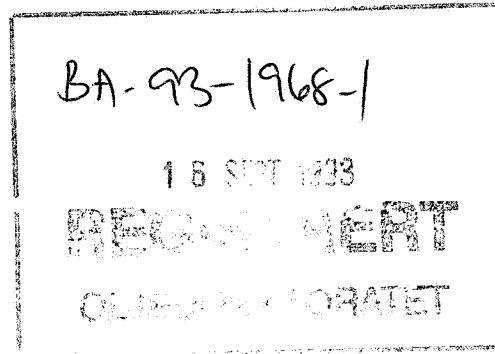
Authors(s)

NIGEL MILLS

Abstract

Twenty-one samples from the cored interval in well 7/8-3 have been analysed by Iatroscan (TLC-FID) and the saturated hydrocarbon fractions from two samples were analysed by GC-FID and GC/MS. The aromatic hydrocarbon fractions were also analysed by GC-FID.

NOT INCLUDED IN WELL TRADE.



Key Words

7/8-3, geochemistry, GC-FID, GC/MS, Iatroscan

Classification: Free Saga and partners Internal Confidential Strictly confidential

Org. Unit	EUG				
Reviewed	I. Horstad <i>[Signature]</i>				
Accepted					
Approved	T. Healand <i>[Signature]</i>				

Hovedkontor/Head Office Oslo:

Adresse/Address
Kjorboveien 16
Postboks 490
N-1301 SANDVIKA

Telefon/Telephone
Nasjonalt 67 12 86 00
Intern. +47 67 12 86 00

Teleks/Telex
78852 Saga n
Telefax
Nasjonalt 67 128666
Intern. +47 67 128666

Driftsdivisjon/Operations Division Stavanger:

Adresse/Address
Godesettdalen 8
Postboks 117
N-4003 FORUS

Telefon/Telephone
Nasjonalt 04 67 40 00
Intern. +47 4 67 40 00

Teleks/Telex
33244 sagap n
Telefax
Nasjonalt 04 670261
Intern. +47 4 670261

1 Objectives

The objective of this study was to characterise the extractable hydrocarbons in twenty-one core samples from well 7/8-3.

2 General well information

The well was drilled by Conoco as operator of licence 069 from 12.9.83 to 12.12.83 and reached a total depth of 4320 mRKB. The KB of the rig was 25 metres and the water depth was 81 metres.

3 Samples and analytical scheme

Twenty-one samples were picked from the cored interval in the well on the 6th of August 1992. All samples were analysed by Iatroscan (TLC-FID), and the saturated hydrocarbon fractions from two samples were analysed by GC-FID and GC/MS. The aromatic hydrocarbon fractions were also analysed by GC-FID.

4 Vitrinite reflectance

No samples were analysed.

5 TOC and Rock Eval

No samples were analysed.

6 Iatroscan (TLC-FID)

Twenty-one samples were analysed, and the results are tabulated in Table 1.

7 GC-FID

The saturated and aromatic hydrocarbon fractions from 2 samples were analysed by GC-FID. Since the evaporative loss has affected the relative concentration of individual compounds, no ratios were calculated. The GC-FID chromatograms are shown in figure 1.

8 GC/MS

The saturated hydrocarbon fractions from the samples were analysed by GC/MS and the mass chromatograms for m/z 191, 177, 217 and 218 are shown in figure 2.

9 Stable carbon isotopes

No samples were analysed.

Tab. 1

SAGLAB RESULTS MANAGEMENT : EXTRACTION ANALYSIS RESULTS in mg/g Rock

Data for Well 7/8-3

Page 1

Type	St.Depth	En.Depth	Weight (g)	EOM mg/g Rock	EOM mg/g TOC	Sat (mg/g)	Aro (mg/g)	NSO (mg/g)	Asph (mg/g)	Polars (mg/g)	TOC (%)	M/I
CCP	3731.40	3731.40	2.45	4.16		2.20	0.60			1.36		I
CCP	3732.70	3732.70	2.91	9.28		4.89	1.54			2.85		I
CCP	3733.60	3733.60	3.36	9.76		4.94	1.64			3.17		I
CCP	3734.50	3734.50	3.07	8.19		4.25	1.46			2.47		I
CCP	3735.65	3735.65	2.42	10.24		5.31	1.41			3.52		I
CCP	3736.50	3736.50	2.81	8.12		3.92	1.43			2.77		I
CCP	3737.50	3737.50	2.93	4.47		2.27	0.92			1.28		I
CCP	3738.65	3738.65	2.64	0.23		0.07	0.00			0.16		I
CCP	3740.70	3740.70	3.07	3.99		2.12	0.87			1.00		I
CCP	3743.75	3743.75	3.08	4.74		2.30	0.86			1.58		I
CCP	3745.40	3745.40	2.57	4.42		2.28	0.73			1.42		I
CCP	3749.30	3749.30	3.07	4.80		2.63	0.77			1.40		I
CCP	3749.30	3749.30	2.97	0.09		0.00	0.00			0.09		I
CCP	3753.30	3753.30	2.99	6.58		3.04	1.58			1.97		I
CCP	3755.55	3755.55	2.97	8.06		4.10	1.79			2.18		I

21 RESULT(s) selected ..., from the following search criteria:

Nat: NOR, Well: 7/8-3, Type: CCP,

Depth between: 0.000 and 99999.990

m

SAGLAB RESULTS MANAGEMENT : EXTRACTION ANALYSIS RESULTS in mg/g Rock

Data for Well 7/8-3

Page 2

Type	St.Depth	En.Depth	Weight (g)	EOM mg/g Rock	EOM mg/g TOC	Sat (mg/g)	Aro (mg/g)	NSO (mg/g)	Asph (mg/g)	Polars (mg/g)	TOC (%)	M/I
CCP	3757.50	3757.50	2.35	3.13		1.39	0.49			1.26		I
CCP	3759.55	3759.55	2.74	3.56		1.79	0.64			1.13		I
CCP	3760.70	3760.70	2.76	3.72		1.97	0.79			0.96		I
CCP	3763.55	3763.55	3.00	2.12		0.88	0.26			0.99		I
CCP	3765.65	3765.65	2.50	0.19		0.00	0.00			0.19		I
CCP	3766.65	3766.65	1.73	0.32		0.00	0.00			0.32		I
Averages this Well:				4.77	0.00	2.40	0.85	0.00	0.00	1.53	0.00	
Averages all Wells:				4.77	0.00	2.40	0.85	0.00	0.00	1.53	0.00	

21 RESULT(s) selected ..., from the following search criteria:

Nat: NOR, Well: 7/8-3, Type: CCP,

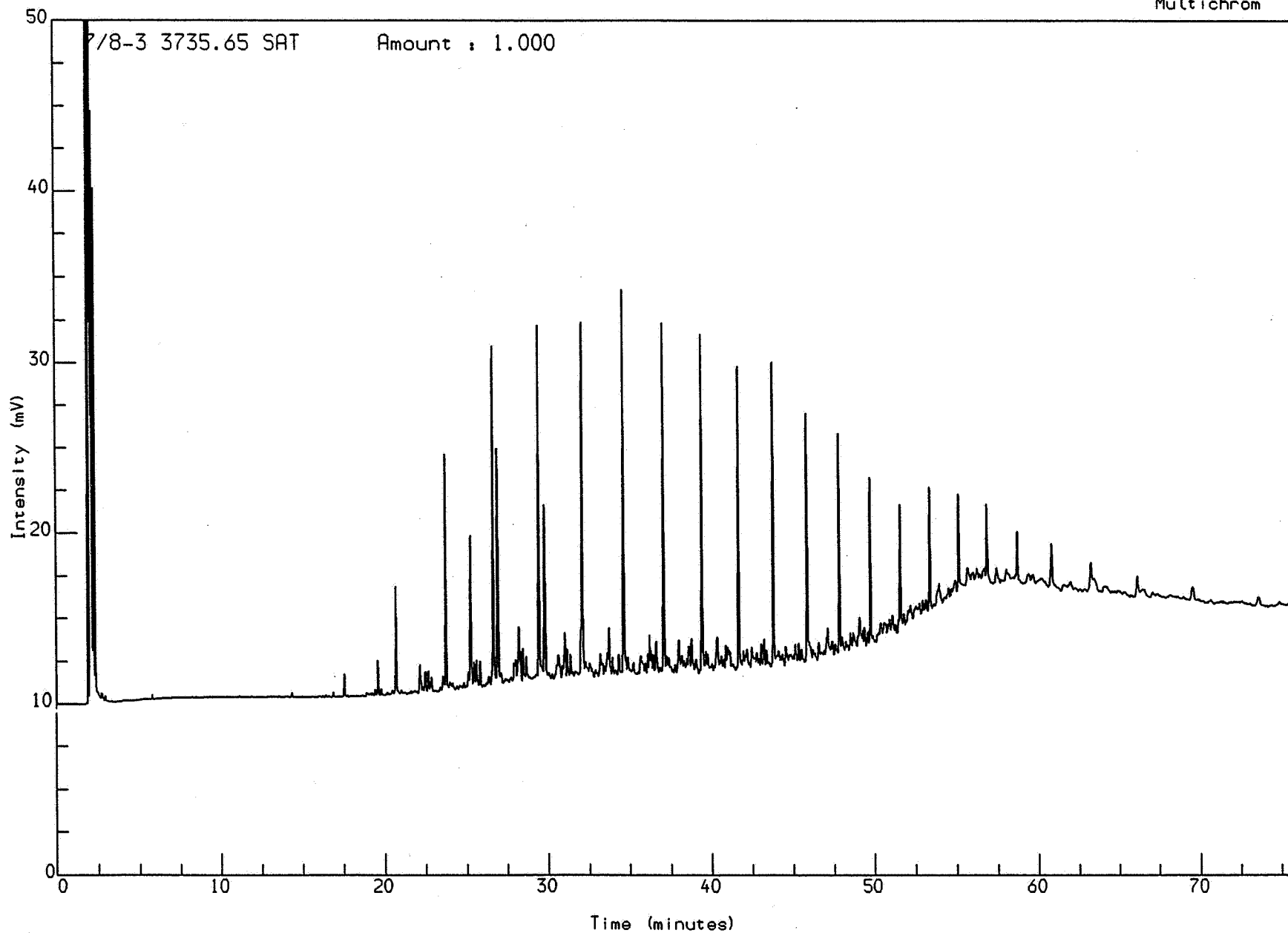
Depth between: 0.000 and 99999.990

m

Fig. 1

Analysis Name : [DL PROJECT] 3 S101,1,1.

Multichrom

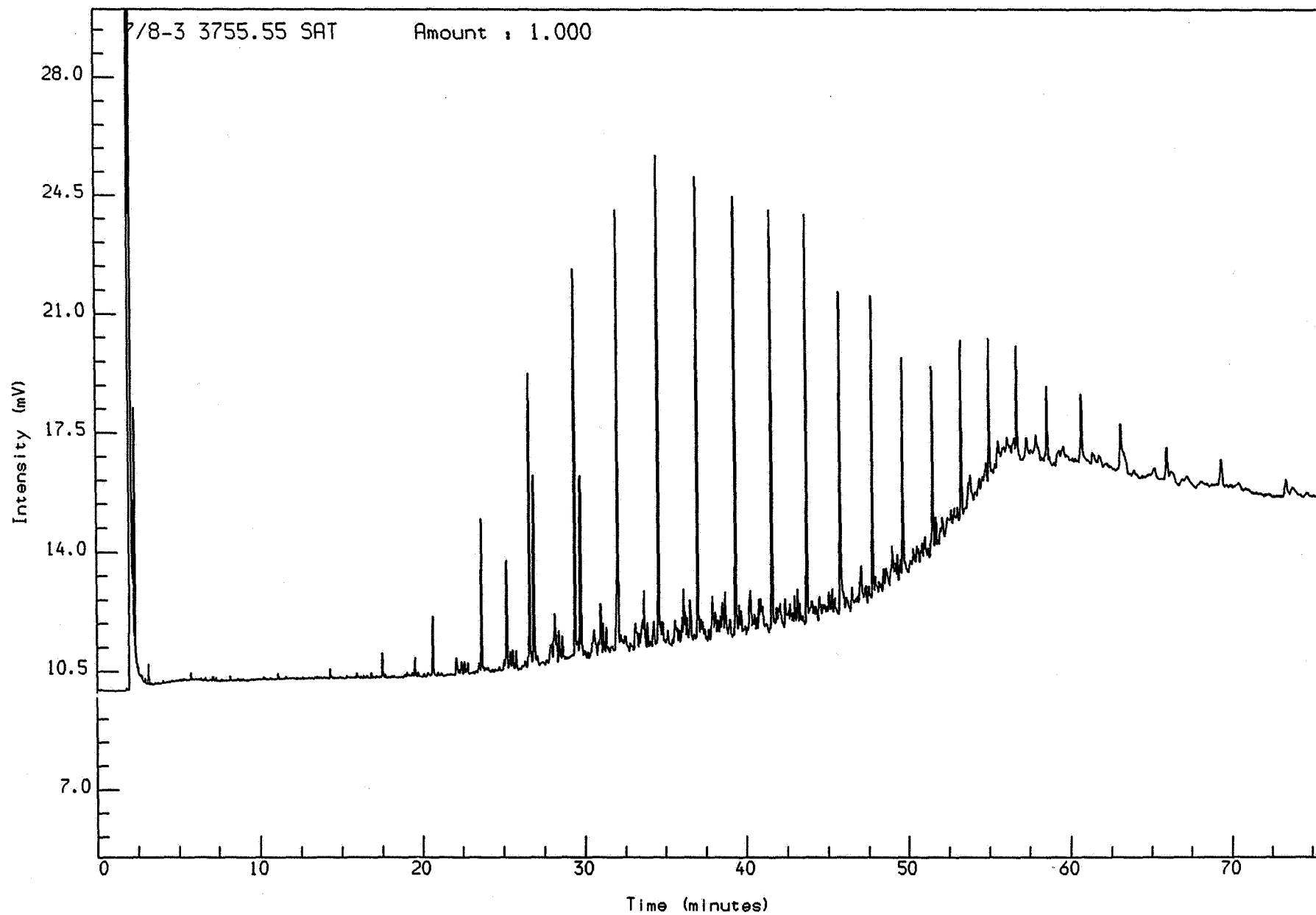


Acquired on 29-SEP-1992 at 13:45

Reported on 2-OCT-1992 at 10:37

Analysis Name : [PROJECT] 3 S101,2,1.

Multichrom

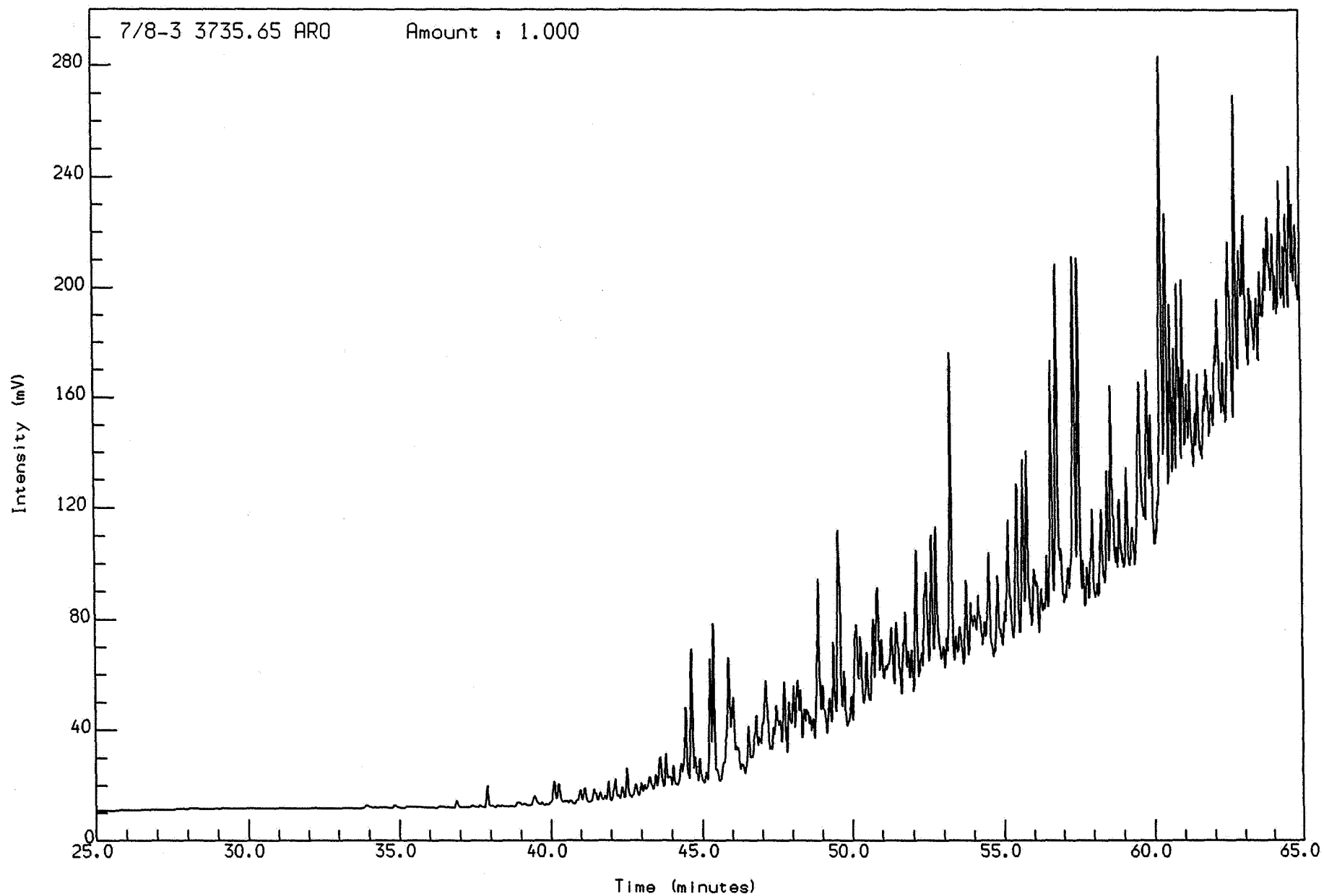


Acquired on 29-SEP-1992 at 15:06

Reported on 2-OCT-1992 at 10:39

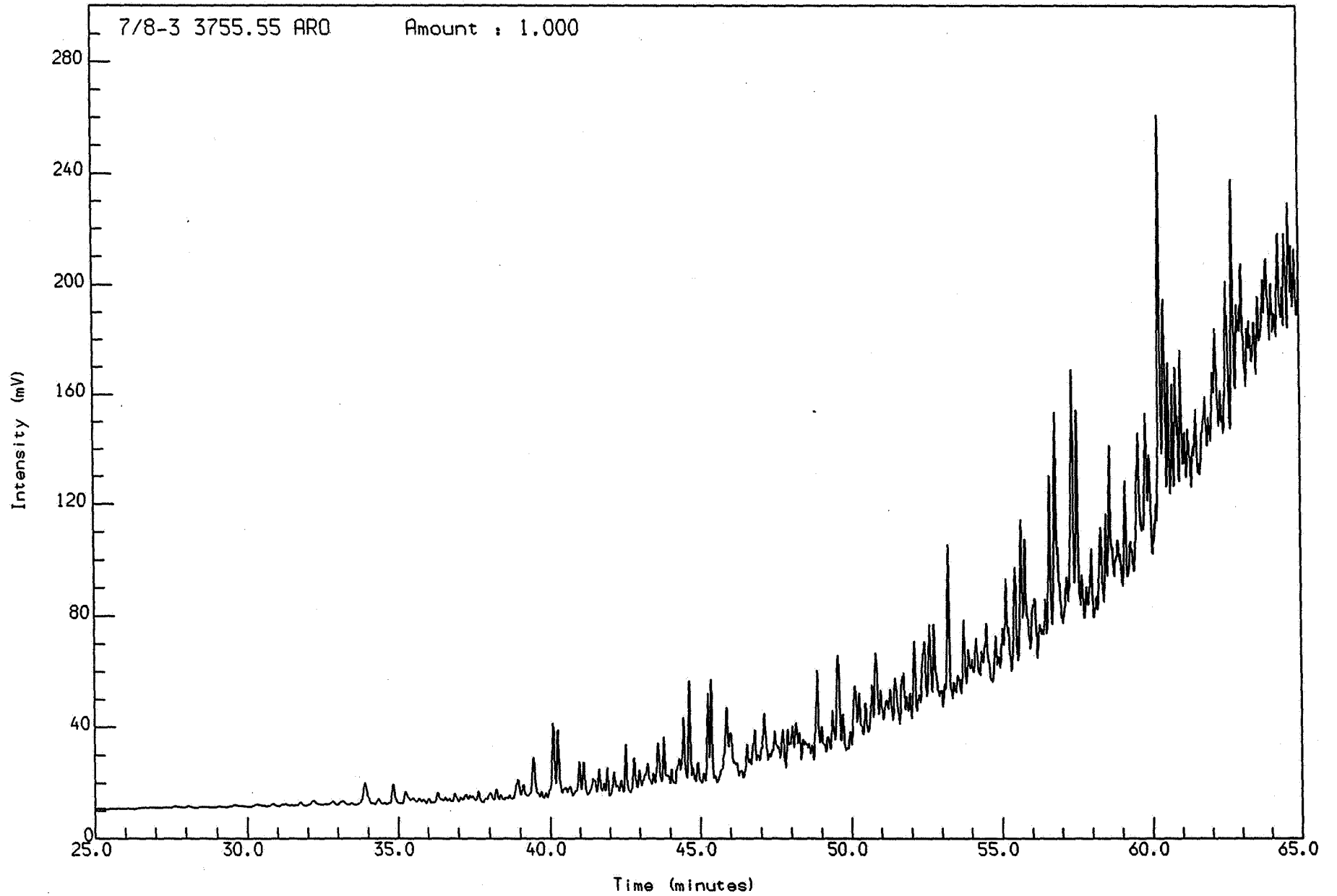
Analysis Name : [D: PROJECT] 1 A157,1,1.

Multichrom



Acquired on 1-OCT-1992 at 16:27

Reported on 5-OCT-1992 at 13:10



Acquired on 2-OCT-1992 at 07:59

Reported on 5-OCT-1992 at 13:10

Fig. 2

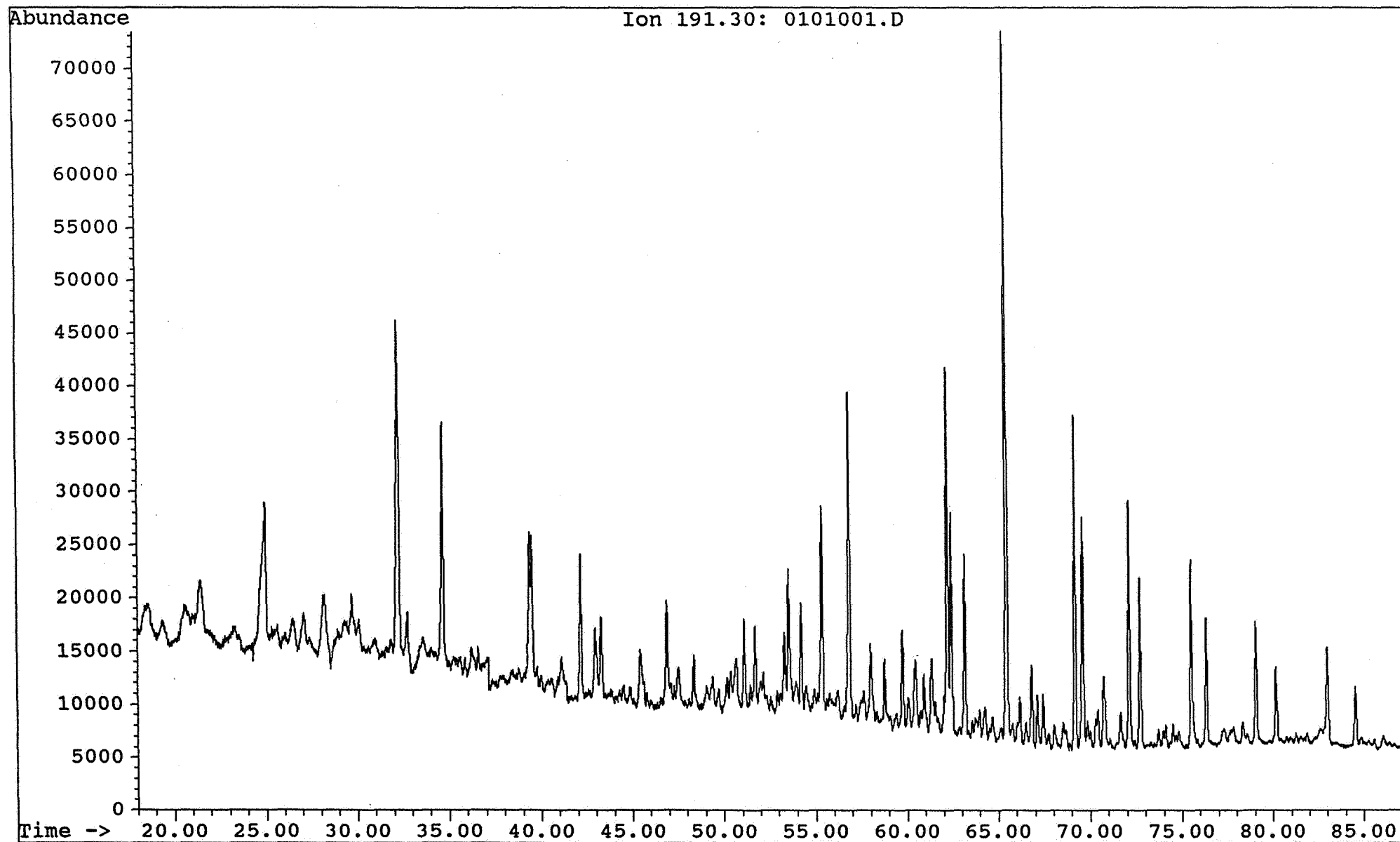
Saga Petroleum a.s.

Date acquired: 1 Oct 92 10:44 am

File: C:\CHEMPC\DATA\KVAD7_15\0101001.D Inst: HP5971A Inj: Split Meth: BMS.M

Sample name:

WELL 7/8-3 3735,65 sat

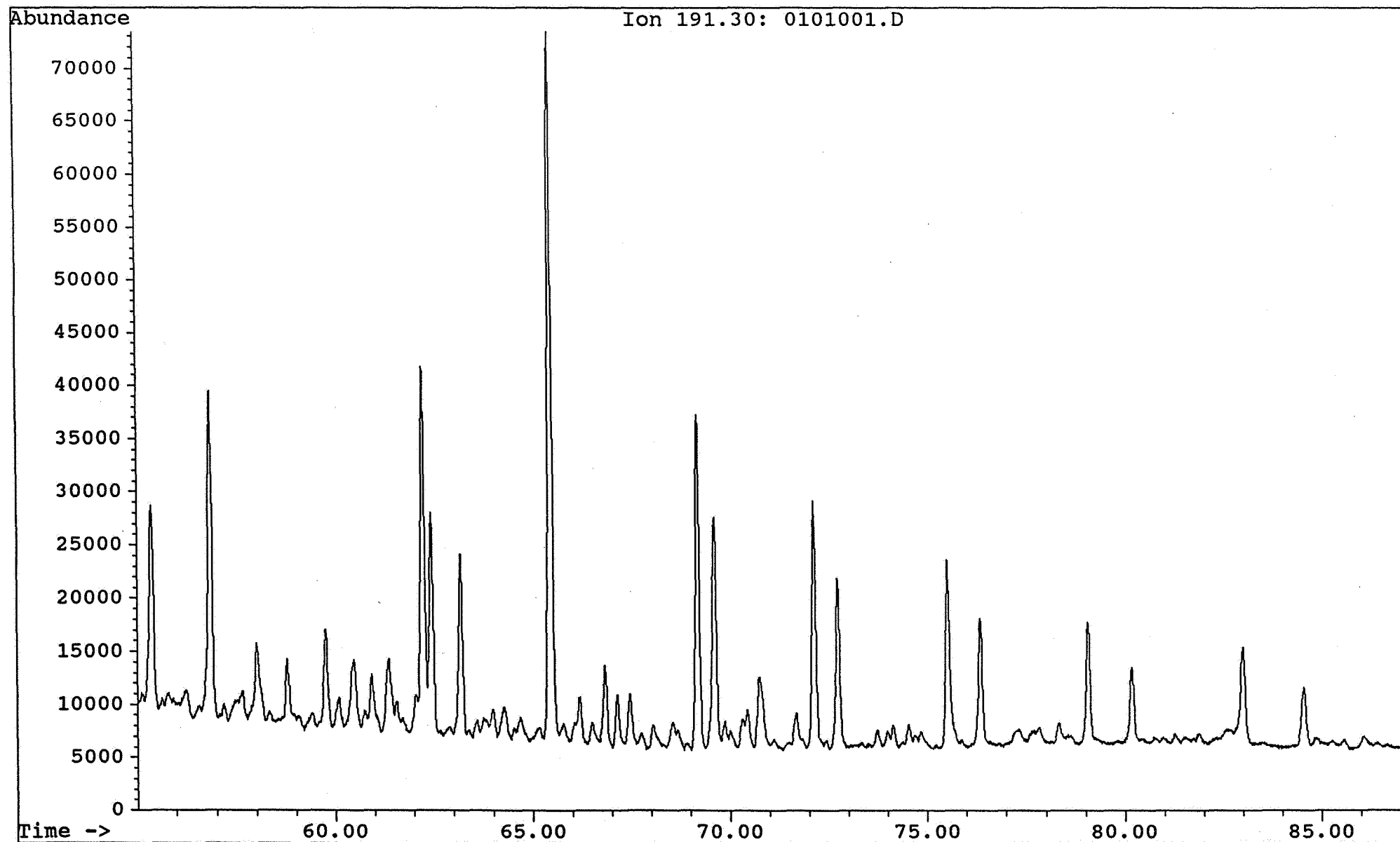


Saga Petroleum a.s.

Date acquired: 1 Oct 92 10:44 am

File: C:\CHEMPC\DATA\KVAD7_15\0101001.D Inst: HP5971A Inj: Split Meth: BMS.M

Sample name: WELL 7/8-3 3735,65 sat



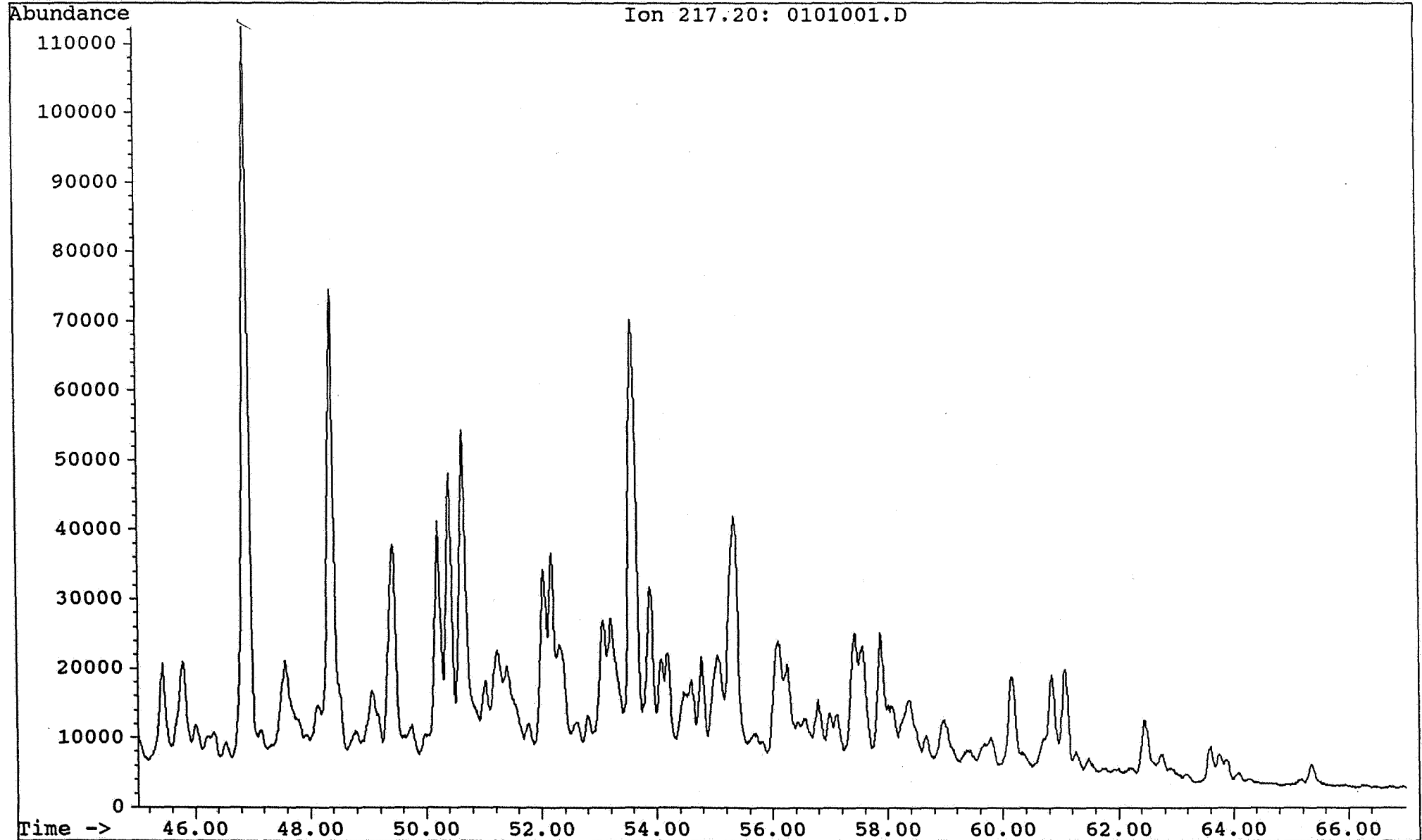
Saga Petroleum a.s.

Date acquired: 1 Oct 92 10:44 am

File: C:\CHEMPC\DATA\KVAD7_15\0101001.D Inst: HP5971A Inj: Split Meth: BMS.M

Sample name:

WELL 7/8-3 3735,65 sat

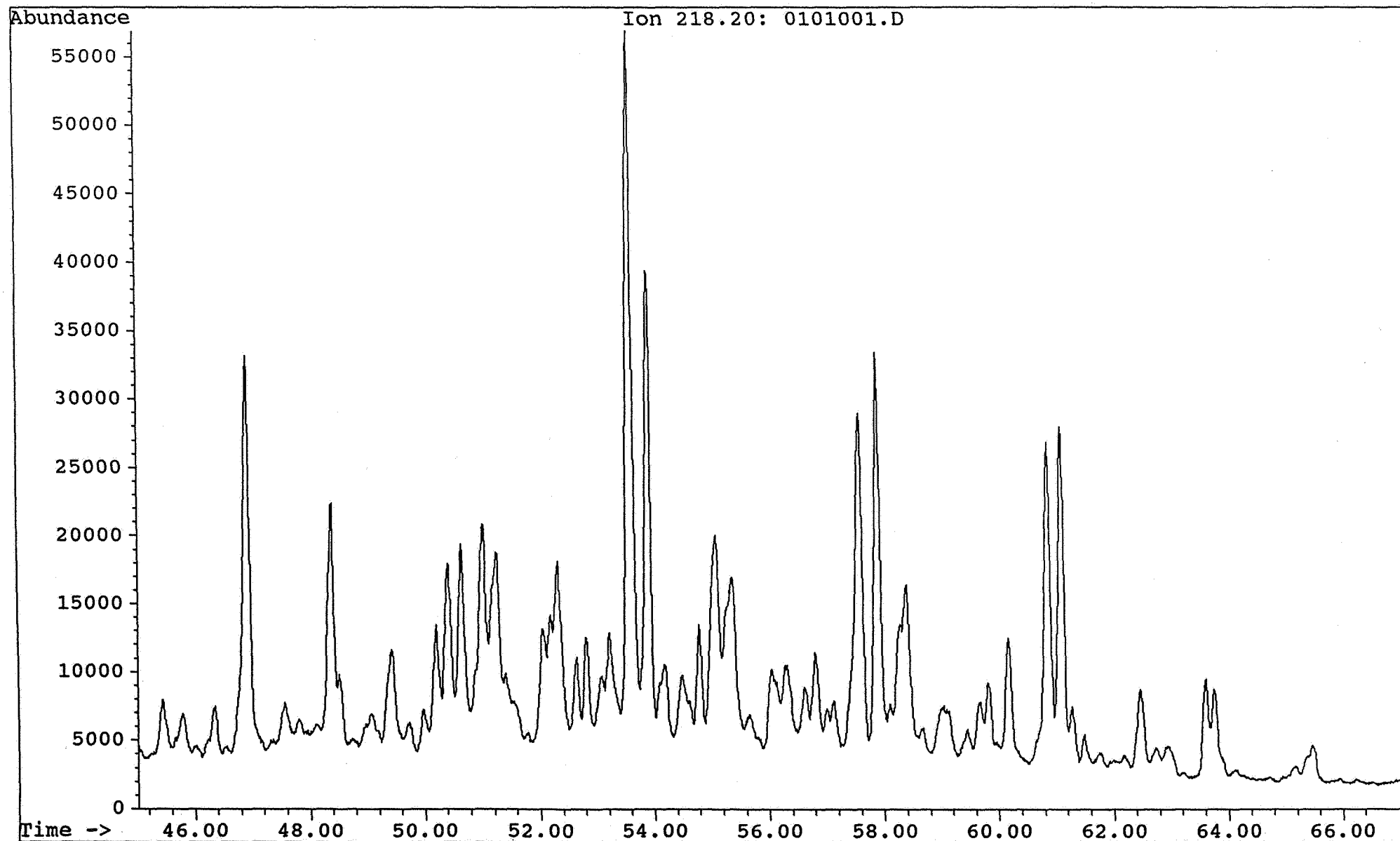


Saga Petroleum a.s.

Date acquired: 1 Oct 92 10:44 am

File: C:\CHEMPC\DATA\KVAD7_15\0101001.D Inst: HP5971A Inj: Split Meth: BMS.M

Sample name: WELL 7/8-3 3735,65 sat



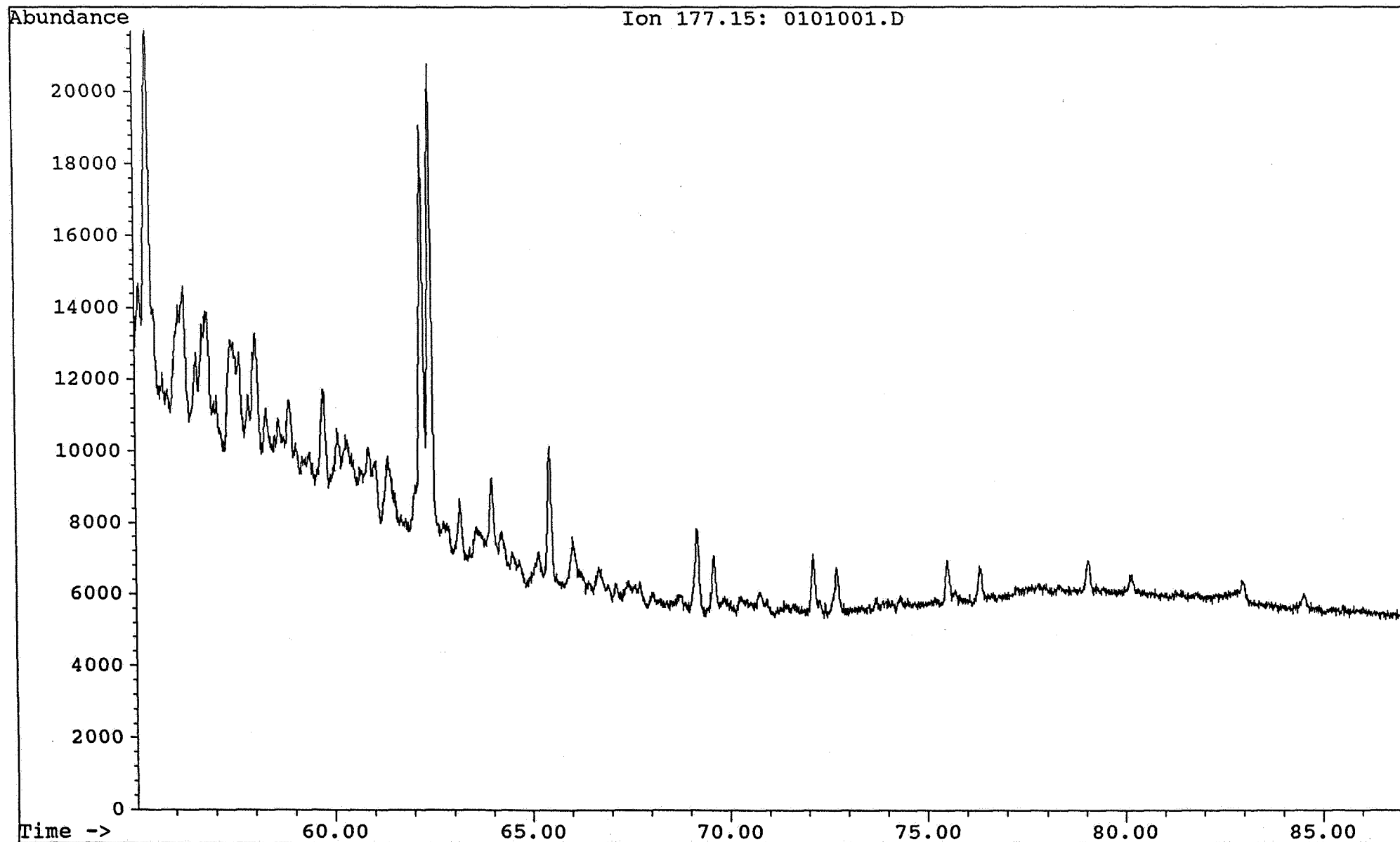
Saga Petroleum a.s.

Date acquired: 1 Oct 92 10:44 am

File: C:\CHEMPC\DATA\KVAD7_15\0101001.D Inst: HP5971A Inj: Split Meth: BMS.M

Sample name:

WELL 7/8-3 3735,65 sat

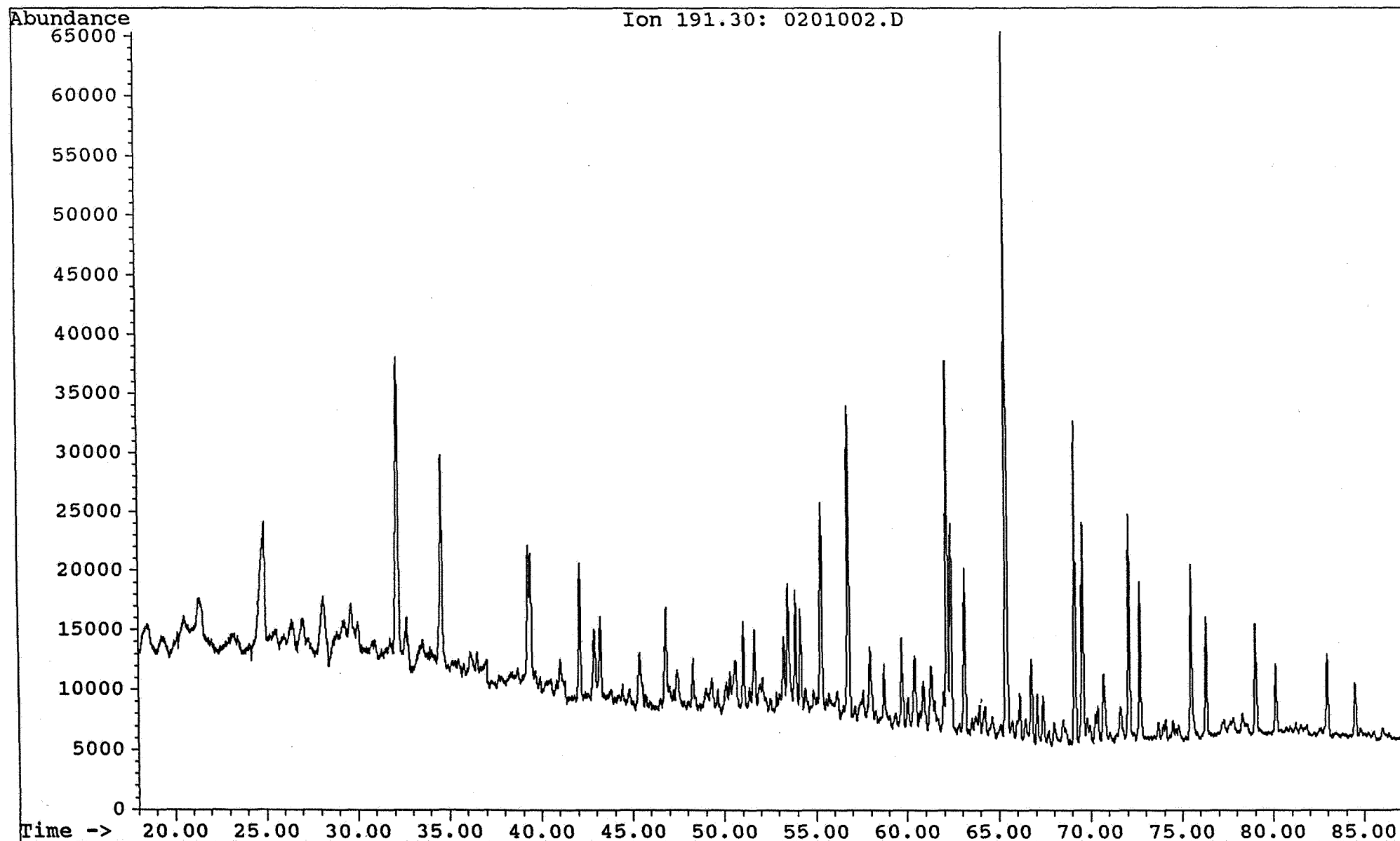


Saga Petroleum a.s.

Date acquired: 1 Oct 92 12:28 pm

File: C:\CHEMPC\DATA\KVAD7_15\0201002.D Inst: HP5971A Inj: Split Meth: BMS.M

Sample name: WELL 7/8-3 3755,55 sat



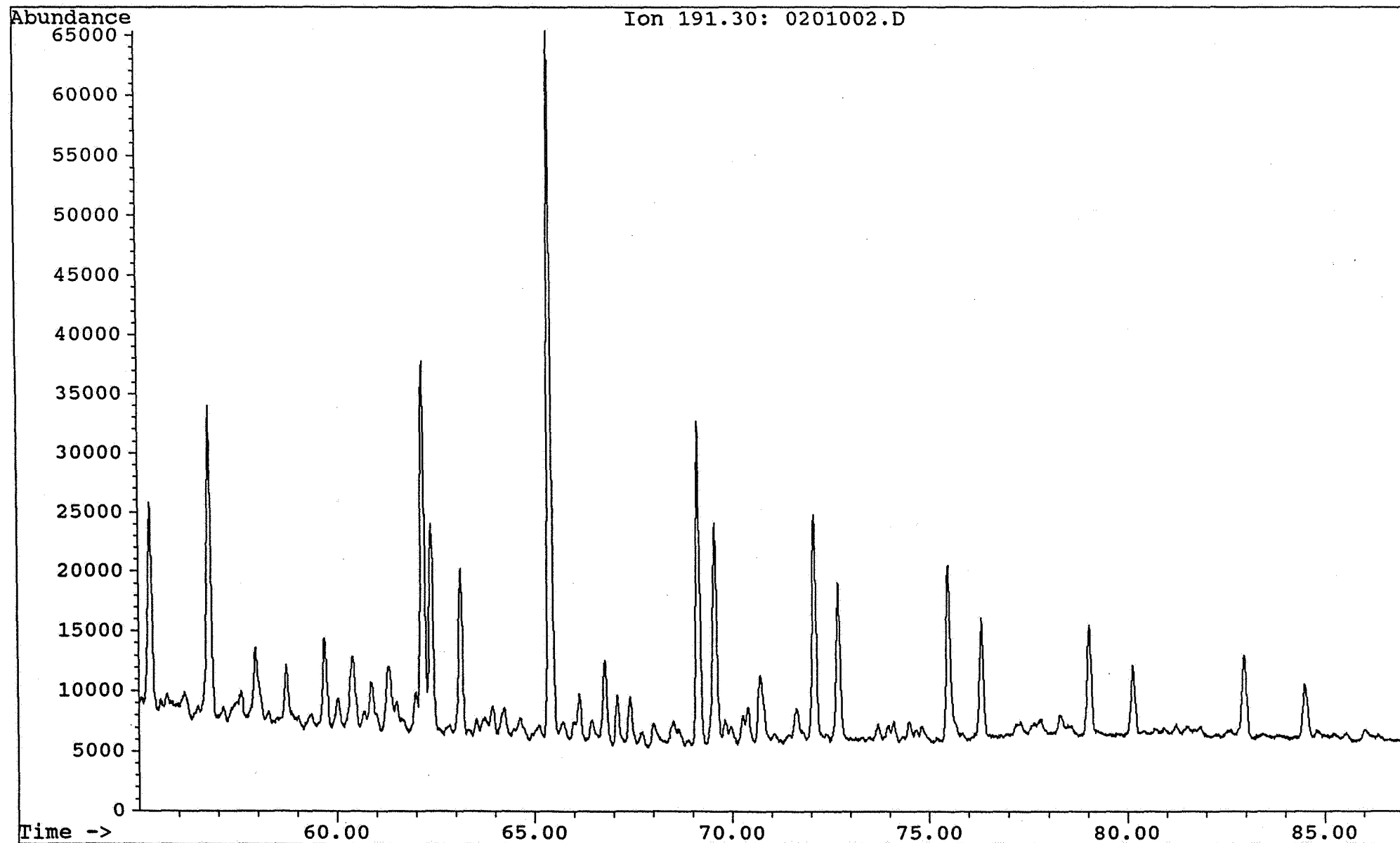
Saga Petroleum a.s.

Date acquired: 1 Oct 92 12:28 pm

File: C:\CHEMPC\DATA\KVAD7_15\0201002.D Inst: HP5971A Inj: Split Meth: BMS.M

Sample name:

WELL 7/8-3 3755,55 sat



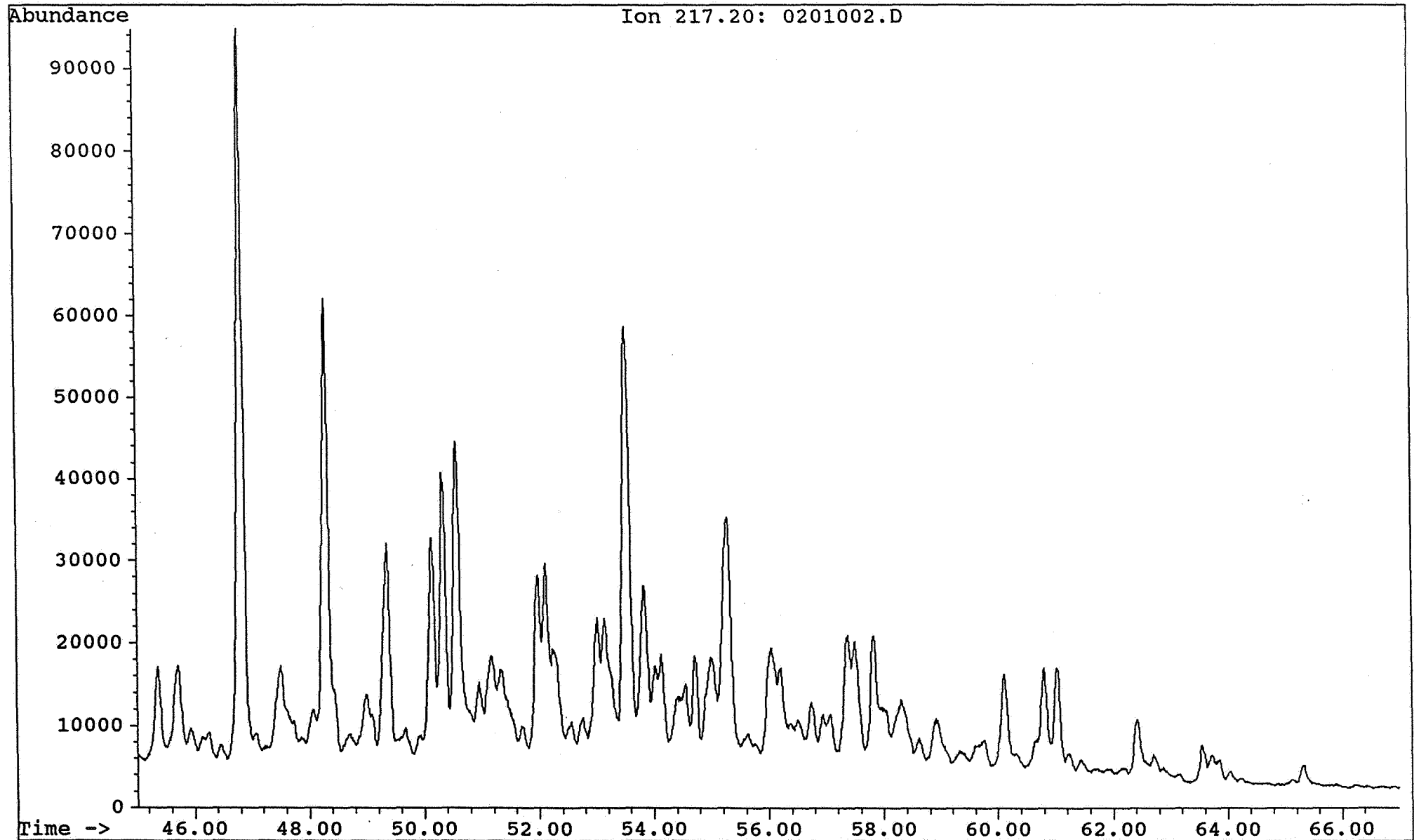
Saga Petroleum a.s.

Date acquired: 1 Oct 92 12:28 pm

File: C:\CHEMPC\DATA\KVAD7_15\0201002.D Inst: HP5971A Inj: Split Meth: BMS.M

Sample name:

WELL 7/8-3 3755,55 sat



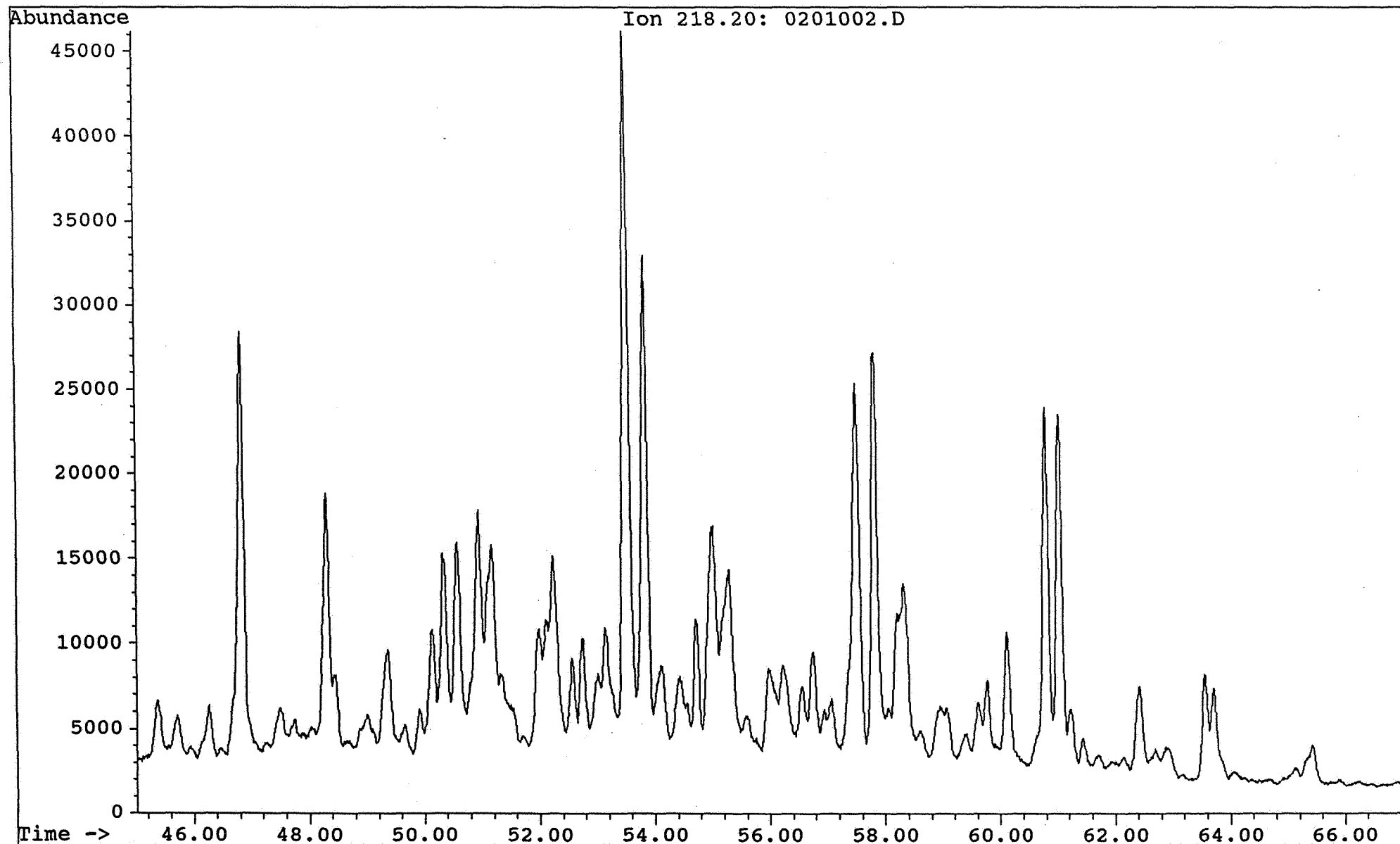
Saga Petroleum a.s.

Date acquired: 1 Oct 92 12:28 pm

File: C:\CHEMPC\DATA\KVAD7_15\0201002.D Inst: HP5971A Inj: Split Meth: BMS.M

Sample name:

WELL 7/8-3 3755,55 sat



Saga Petroleum a.s.

Date acquired: 1 Oct 92 12:28 pm

File: C:\CHEMPC\DATA\KVAD7_15\0201002.D Inst: HP5971A Inj: Split Meth: BMS.M

Sample name: WELL 7/8-3 3755,55 sat

