

3/

BOX 68 NO 4118

3/7-1

Lab. 10015

ENTREPRISE DE RECHERCHES ET D'ACTIVITES PETROLIERES



reg.

WELL 3/7-1 (NORGE)

REFLECTANCE OF INSOLUBLE ORGANIC MATTER

WELL 3/7-1

DIRECTION EXPLORATION  
LABORATOIRES

FICHE DE DIFFUSION

Réf. : 2035 n° 4/1005 R

Titre : Well 3/7-1 (NORGE)  
Reflectance of insoluble organic matter

Auteur : P. ROBERT

Destinataires :

MM. R.G. LEVY	}	1
PERRODON		
S.I.D.		1
Dpt Géologique Central		1
DIV.II - EUROPE DU NORD		16

ELF R.E.  
D. EXPLOR.  
DEPARTEMENT GEOLOGIQUE CENTRAL  
LABORATOIRES

*reg.*

WELL 3/7-1 (NORGE)

REFLECTANCE OF INSOLUBLE ORGANIC MATTER

WELLFILE

2035 n° 4/1005 R  
/ca

P. ROBERT  
September 1974

Reference : Order n° 031010

This study was carried out by the D<sup>t</sup>.G.C. - Laboratory at the ELF R.E. Research Center of Boussens.

You have already been sent the following documents relating to the same order :

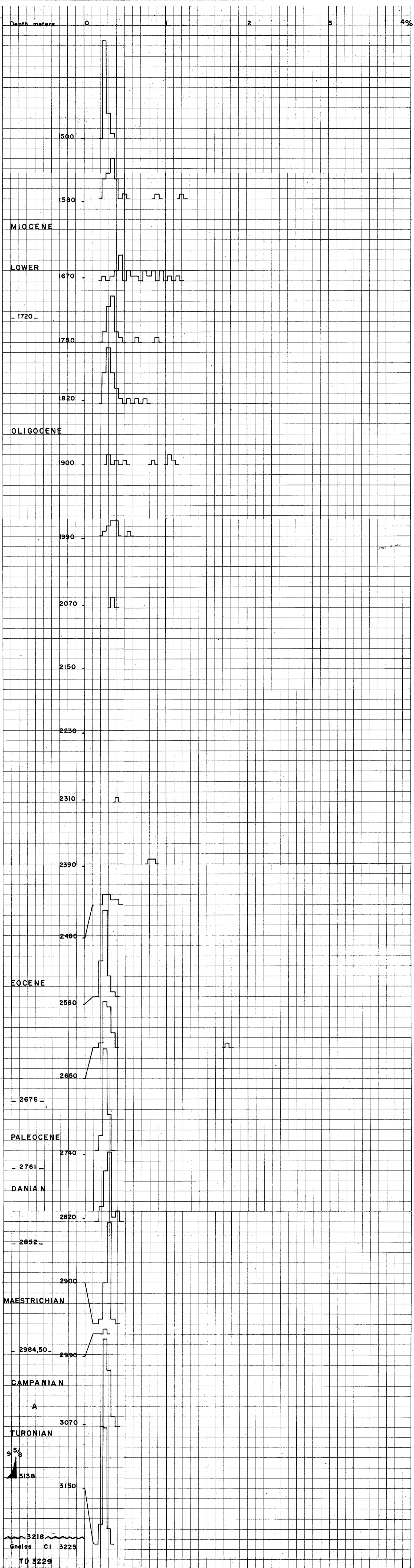
- R. CUSSEY - Report No. 4/942 R -  
3/7-1 Well - Sedimentological study of the Paleocene - Eocene series.

This well displays an upper Cretaceous section limited to the Turonian and lying directly upon the basement without lower Cretaceous and Jurassic.

The reflectance study, carried out from 1500 m (Miocene) to the bottom, 3225 m, by means of 20 samples drill cuttings and the core n° 1, provides a fairly good diagram, save only from 2000 to 2500 m (Eocene - Oligocene) devoid of organic particles.

The whole section encloses typical and constant lignits from the top to the bottom ; the reflectance of these lignits (huminite or vitrinite) remains the same at 0.30 % from 1500 to 3200 m.

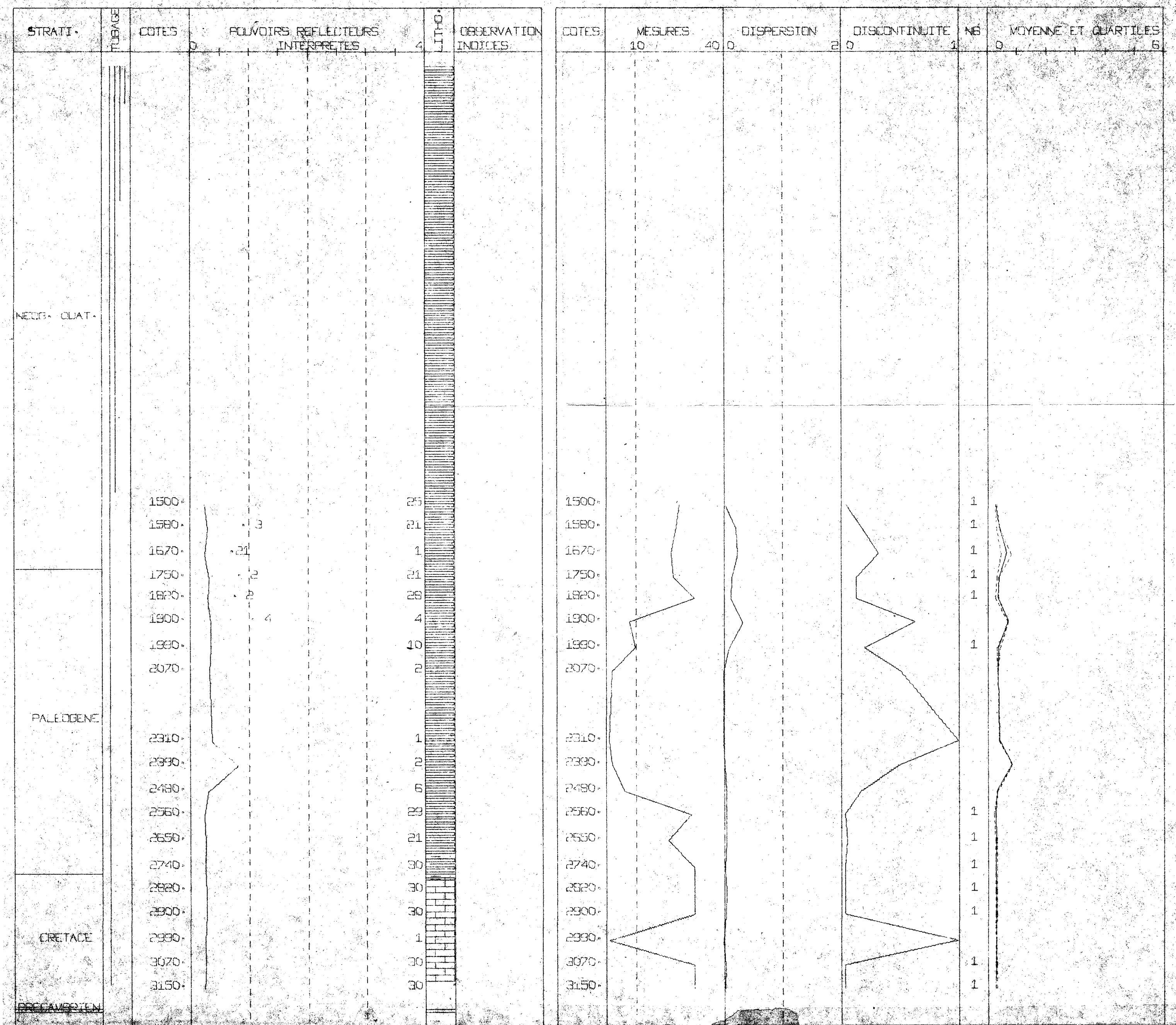
The crystalline mole, which remained in relief until the Middle Cretaceous and was buried only during the basin subsidence i.e. for the late Cretaceous - Tertiary, stands apart the EKOFISK area by its relative stability and its low geothermy (the reflectance of 0.30 % at 3000 m is obviously lower than the world average in the quiet basins : 0.50 %).



□ Coals  
 ▨ Bitumens

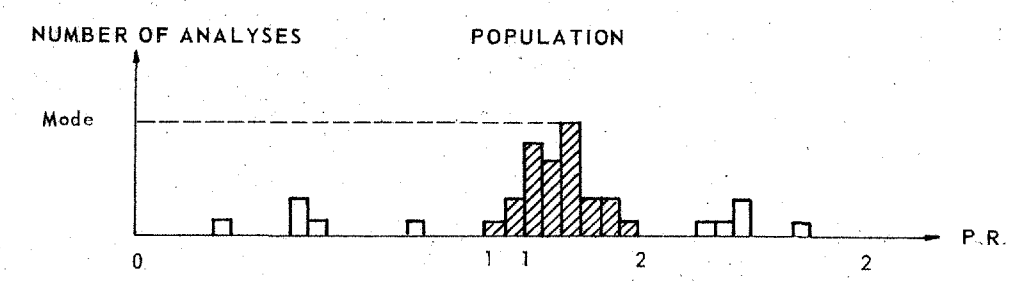
	Secteur NORVEGE Operateur Permis ou Concession	
	<b>WELL SIV 3/7-1</b> <b>ORGANIC MATTER REFLECTANCE</b>	
WF ENTREPRISE DE RECHERCHES ET D'ACTIVITES PETROLIERES DIRECTION EXPLORATION LABORATOIRE		Echelle 1/ 0000000 Date Sept 74 P. ROBERT N°classif 7700





- + Bitumen
- Vitrinite allochthonous
- \* Bitumen allochthonous
- Derived cuttings

STATISTICAL PARAMETERS OF THE REFLECTANCE HISTOGRAMS



Total number of measurements = 33  
 Number of measurements taken into account for calculation of the average = 23  
 $x_1$  and  $x_2$  = Limit-values of reflectance of the population.  
 Number of groups of measurements = 6

For the histogram as a whole:  
 Dispersion = of "disparate" type reflectance  
 Discontinuity = number of groups of measurements/ number of measurements in main group

Number of populations = 1  
 Quartiles 25 and 75

For the chief population  
 Average = average reflectance

elf	Secteur NORVEGE	elf NORGE A/S
	Opérateur	
Permis ou Concession		
<b>WELL SIV 3/7-1</b>		
<b>STATISTICAL REPRESENTATION OF THE RESULTS OF ANALYSIS</b>		
DIRECTION EXPLORATION		Date Sept 74
LABORATOIRE		Autheur YDAGENS
		N°mes 7701