

Document Id. : R-EUG-0217  
 Reference Code :  
 Date : AUGUST 1993  
 Revision Number :

**Title**

GEOCHEMICAL DATA REPORT FOR WELL 7/12-4

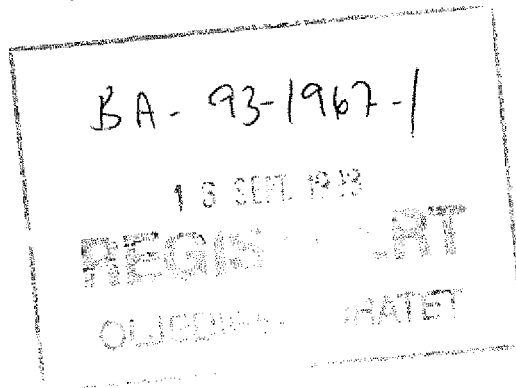
**Authors(s)**

NIGEL MILLS

**Abstract**

Twenty-six samples from the cored interval in well 7/12-4 have been analysed by Iatroscan (TLC-FID) and the saturated hydrocarbon fractions from 2 samples were analysed by GC-FID and GC/MS. The aromatic hydrocarbon fractions have also been analysed by GC-FID.


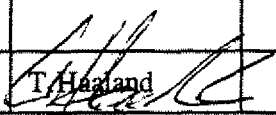
NOT INCLUDED IN WELL TRADE.



**Key Words**

7/12-4, geochemistry, GC-FID, GC/MS, Iatroscan

Classification:  Free  Saga and partners  Internal  Confidential  Strictly confidential

Org. Unit	EUG				
Reviewed	I. Horstad 				
Accepted					
Approved	T. Haaland 				

**Hovedkontor/Head Office Oslo:**

Adresse/Address: Kjerboveien 18, Postboks 490, N-1301 SANDVIKA  
 Telefon/Telephone: Nasjonalt 67 12 66 00, Intern. +47 67 12 66 00

Teleks/Telex: 78852 Saga n  
 Telefaks: Nasjonalt 67 126666, Intern. +47 67 126668

**Driftsdivisjon/Operations Division Stavanger:**

Adresse/Address: Godesetdalen 8, Postboks 117, N-4003 FORUS  
 Telefon/Telephone: Nasjonalt 04 67 40 00, Intern. +47 4 67 40 00

Teleks/Telex: 33244 sagap n  
 Telefaks: Nasjonalt 04 570281, Intern. +47 4 570281

## **1 Objectives**

The objective of this study was to characterise the extractable hydrocarbons in twenty-six core samples from well 7/12-4. In addition the source potential of two samples was investigated.

## **2 General well information**

The wells were drilled by BP as operator of licence 019 from 11.9.77 to 12.12.77 and reached a total depth of 3621 mRKB. The KB of the rig was 25 metres, and the water depth was 71 metres.

## **3 Samples and analytical scheme**

Two samples were picked from the cored interval in the wells on the 6th of August 1992. All samples were analysed by Iatroscan (TLC-FID), and the saturated hydrocarbon fractions from two samples were analysed by GC-FID and GC/MS. The aromatic hydrocarbon fractions were also analysed by GC-FID. Two samples were analysed by LECO (TOC) and Rock Eval.

## **4 Vitrinite reflectance**

No samples were analysed.

## **5 TOC and Rock Eval**

Two samples were analysed. The results are presented in table 1.

## **6 Iatroscan (TLC-FID)**

Twenty-six samples were analysed, and the results are tabulated in table 2.

## **7 GC-FID**

The saturated and aromatic hydrocarbon fractions from 2 samples were analysed by GC-FID. Since the evaporative loss has affected the relative concentration of individual compounds, no ratios were calculated. The GC-FID chromatograms are shown in figure 1.

## **8 GC/MS**

The saturated hydrocarbon fractions from the samples were analysed by GC/MS and the mass chromatograms for m/z 191, 177, 217 and 218 are shown in figure 2.

## **9 Stable carbon isotopes**

No samples were analysed.

**Tab. 1**

SAGLAB RESULTS MANAGEMENT : ROCK EVAL ANALYSIS RESULTS

Data for Well 7/12-4

Page 1

Type	St.Depth	En.Depth	Tmax C	S1 mg/g	S2 mg/g	S3 mg/g	TOC %	PI	HI	OI	PP	Sample ID	Dup
CCP	3534.20	3534.20	440	21.83	268.78	3.49	83.1	0.08	324	4	290.6	89659	1
CCP	3536.10	3536.10	456	19.03	166.37	2.68	85.4	0.10	195	3	185.4	89661	1
Averages this Well:			448	20.43	217.57	3.09	84.3	0.09	259	4	238.0		
Averages all wells:			448	20.43	217.57	3.09	84.3	0.09	259	4	238.0		

---

2 RESULT(s) selected ..., from the following search criteria:

Nat: NOR, Well: 7/12-4, Type:

CCP, Depth between: 0.000 and

99999.990 m

**Tab. 2**

SAGLAB RESULTS MANAGEMENT : EXTRACTION ANALYSIS RESULTS in mg/g Rock

Data for Well 7/12-4

Page 1

Type	St.Depth	En.Depth	Weight (g)	EOM mg/g Rock	ECM mg/g TOC	Sat (mg/g)	Aro (mg/g)	NSO (mg/g)	Asph (mg/g)	Polars (mg/g)	TOC (%)	M/I
CCP	3448.20	3448.20	2.31	4.28		3.21	0.35			0.72		I
CCP	3452.50	3452.50	2.57	6.66		5.24	1.01			0.41		I
CCP	3457.00	3457.00	2.95	3.46		2.58	0.24			0.63		I
CCP	3459.75	3459.75	2.64	1.90		1.51	0.24			0.15		I
CCP	3462.20	3462.20	2.69	4.36		3.43	0.67			0.26		I
CCP	3465.75	3465.75	2.51	4.71		3.78	0.63			0.30		I
CCP	3466.50	3466.50	2.89	6.36		5.03	1.01			0.32		I
CCP	3470.20	3470.20	3.05	4.37		3.41	0.65			0.31		I
CCP	3475.50	3475.50	3.08	2.50		1.85	0.23			0.42		I
CCP	3485.00	3485.00	2.16	3.12		2.32	0.26			0.55		I
CCP	3490.00	3490.00	2.40	2.84		2.16	0.28			0.40		I
CCP	3496.70	3496.70	2.76	3.87		3.08	0.51			0.28		I
CCP	3503.70	3503.70	2.89	1.93		1.55	0.21			0.17		I
CCP	3510.25	3510.25	2.75	2.86		1.96	0.30			0.60		I
CCP	3512.15	3512.15	2.73	3.02		2.27	0.27			0.47		I

26 RESULT(s) selected ..., from the following search criteria:

Nat: NOR, Well: 7/12-4, Type:  
CCP, Depth between: 0.000 and  
99999.990 m

SAGLAB RESULTS MANAGEMENT : EXTRACTION ANALYSIS RESULTS in mg/g Rock

Data for Well 7/12-4

Page 2

Type	St.Depth	En.Depth	Weight (g)	EOM mg/g Rock	EOM mg/g TOC	Sat (mg/g)	Aro (mg/g)	NSO (mg/g)	Asph (mg/g)	Polars (mg/g)	TOC (%)	M/I
CCP	3518.30	3518.30	2.90	2.29		1.67	0.19			0.43		I
CCP	3521.15	3521.15	2.79	0.16		0.04	0.00			0.12		I
CCP	3525.00	3525.00	2.09	0.91		0.68	0.00			0.23		I
CCP	3527.70	3527.70	3.16	2.92		2.12	0.32			0.49		I
CCP	3533.00	3533.00	2.47	0.48		0.35	0.00			0.13		I
CCP	3541.00	3541.00	1.56	10.69		0.19	5.07			5.43		I
CCP	3541.20	3541.20	2.27	3.50		0.42	1.24			1.84		I
CCP	3542.30	3542.30	2.41	0.12		0.00	0.00			0.12		I
CCP	3546.60	3546.60	2.25	0.07		0.00	0.00			0.07		I
CCP	3550.55	3550.55	3.05	0.73		0.37	0.00			0.37		I
CCP	3555.75	3555.75	3.24	0.06		0.00	0.00			0.06		I
Averages this Well:				3.01	0.00	1.89	0.53	0.00	0.00	0.59	0.00	
Averages all Wells:				3.01	0.00	1.89	0.53	0.00	0.00	0.59	0.00	

26 RESULT(s) selected ..., from the following search criteria:

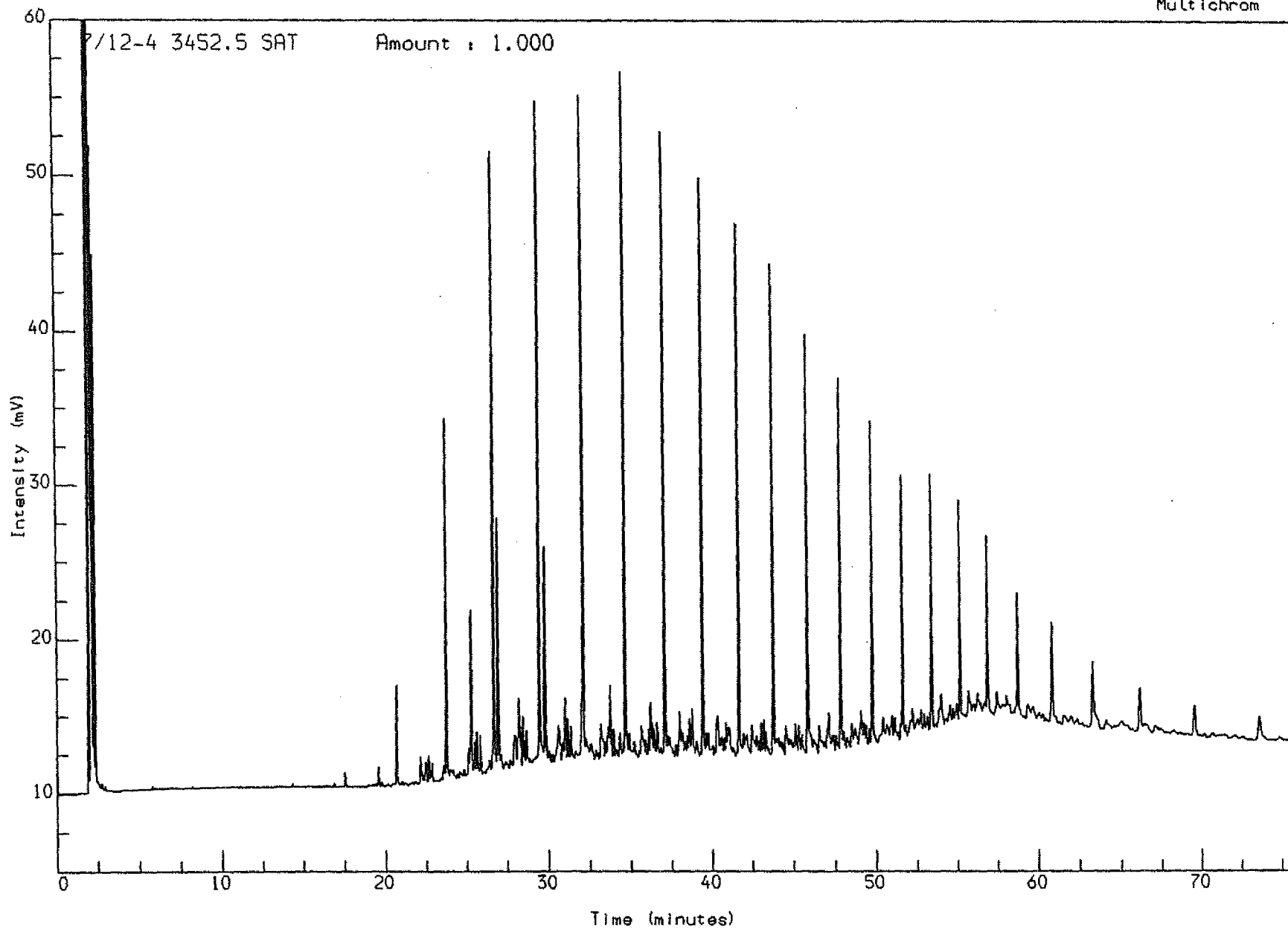
Nat: NOR, Well: 7/12-4, Type:  
CCP, Depth between: 0.000 and  
99999.990 m

**Fig. 1**



Analysis Name : [D:\PROJECT] 3 S102,1,1.

Multichrom

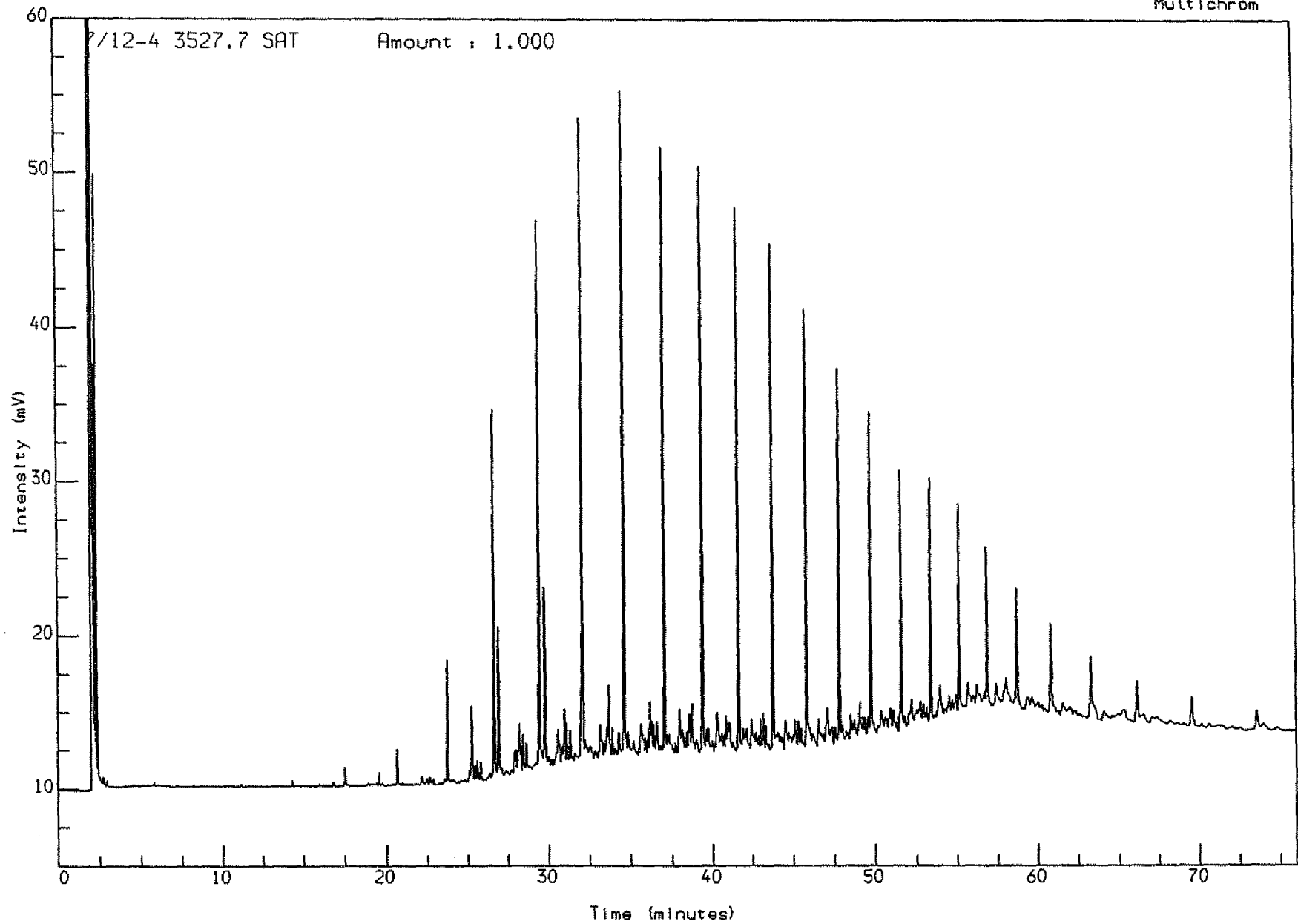


Acquired on 30-SEP-1992 at 10:42

Reported on 2-OCT-1992 at 13:15

Analysis Name : [L.F-PROJECT] 3 S102,2,1.

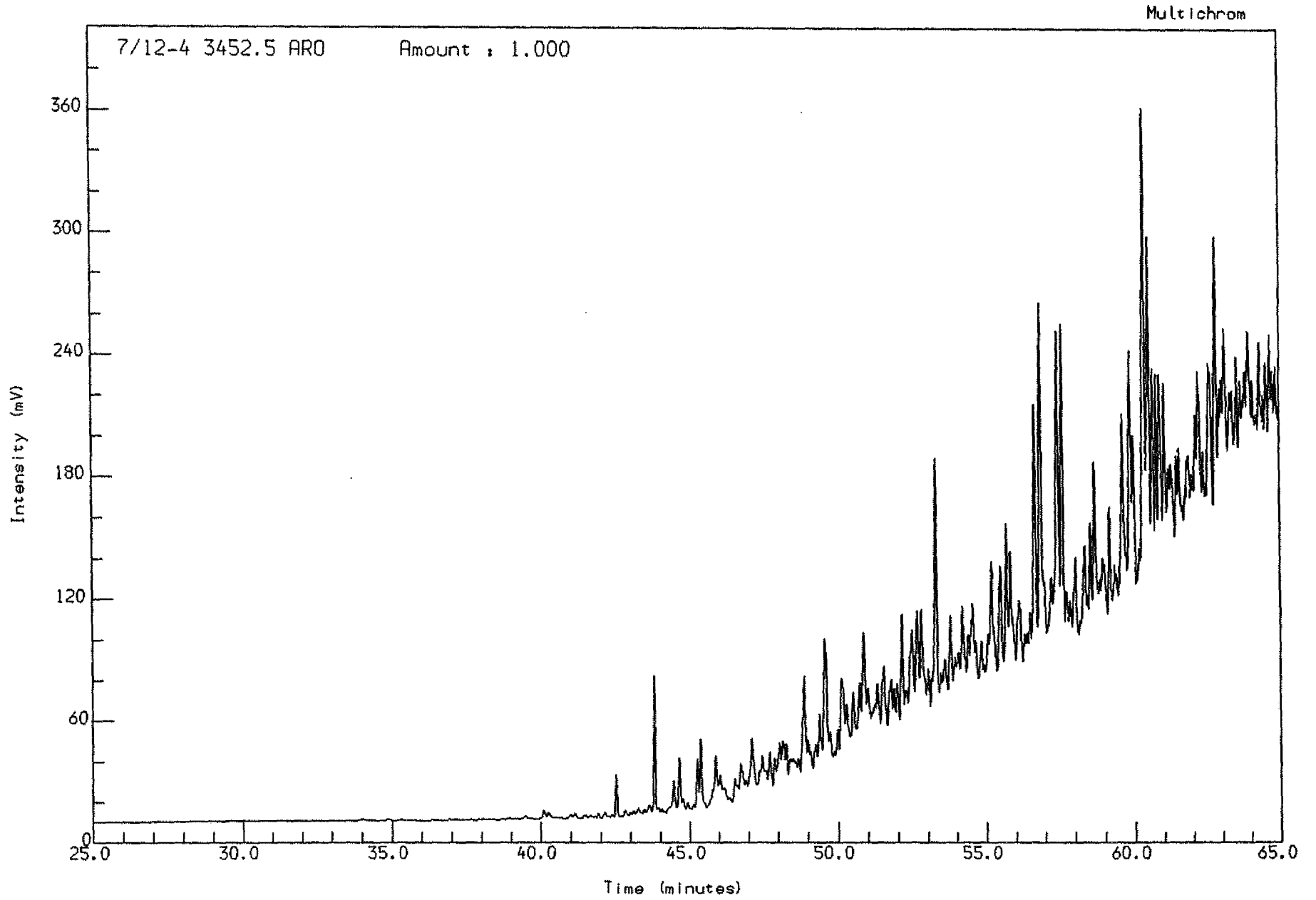
Multichrom



Acquired on 30-SEP-1992 at 12:03

Reported on 2-OCT-1992 at 13:16

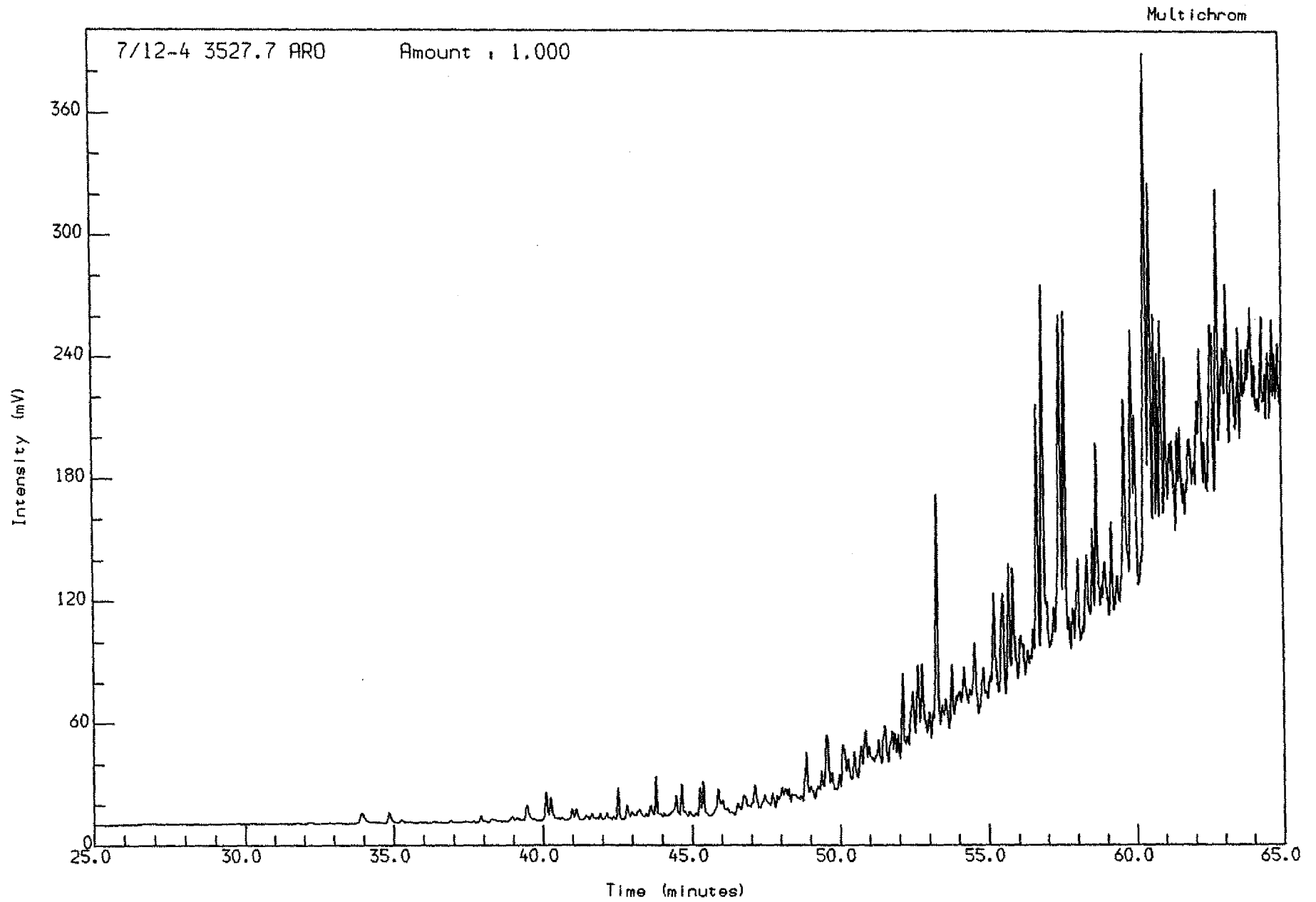
Analysis Name : [C-PROJECT] 1 A157,8,1.



Acquired on 2-OCT-1992 at 16:58

Reported on 5-OCT-1992 at 13:16

Analysis Name : [PROJECT] 1 A157.9.1.



Acquired on 2-OCT-1992 at 18:28

Reported on 5-OCT-1992 at 13:16

**Fig. 2**

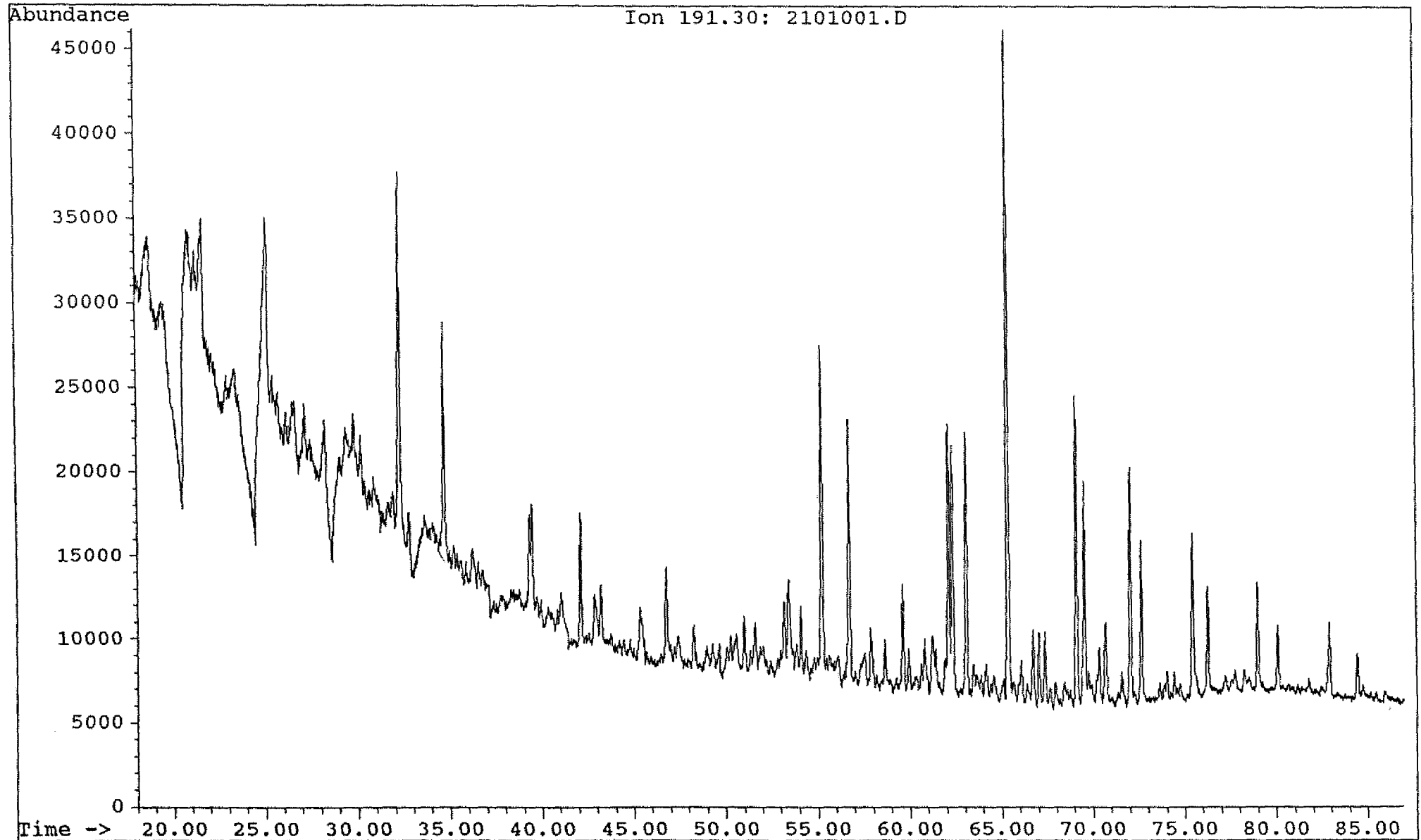
Saga Petroleum a.s.

Date acquired: 5 Oct 92 10:07 am

File: C:\CHEMPC\DATA\KVAD7\_15\2101001.D Inst: HP5971A Inj: Split Meth: BMS.M

Sample name:

WELL 7/12-4 3452,5 sat



Saga Petroleum a.s.

File: C:\CHEMPC\DATA\KVAD7\_15\2101001.D

Inst: HP5971A

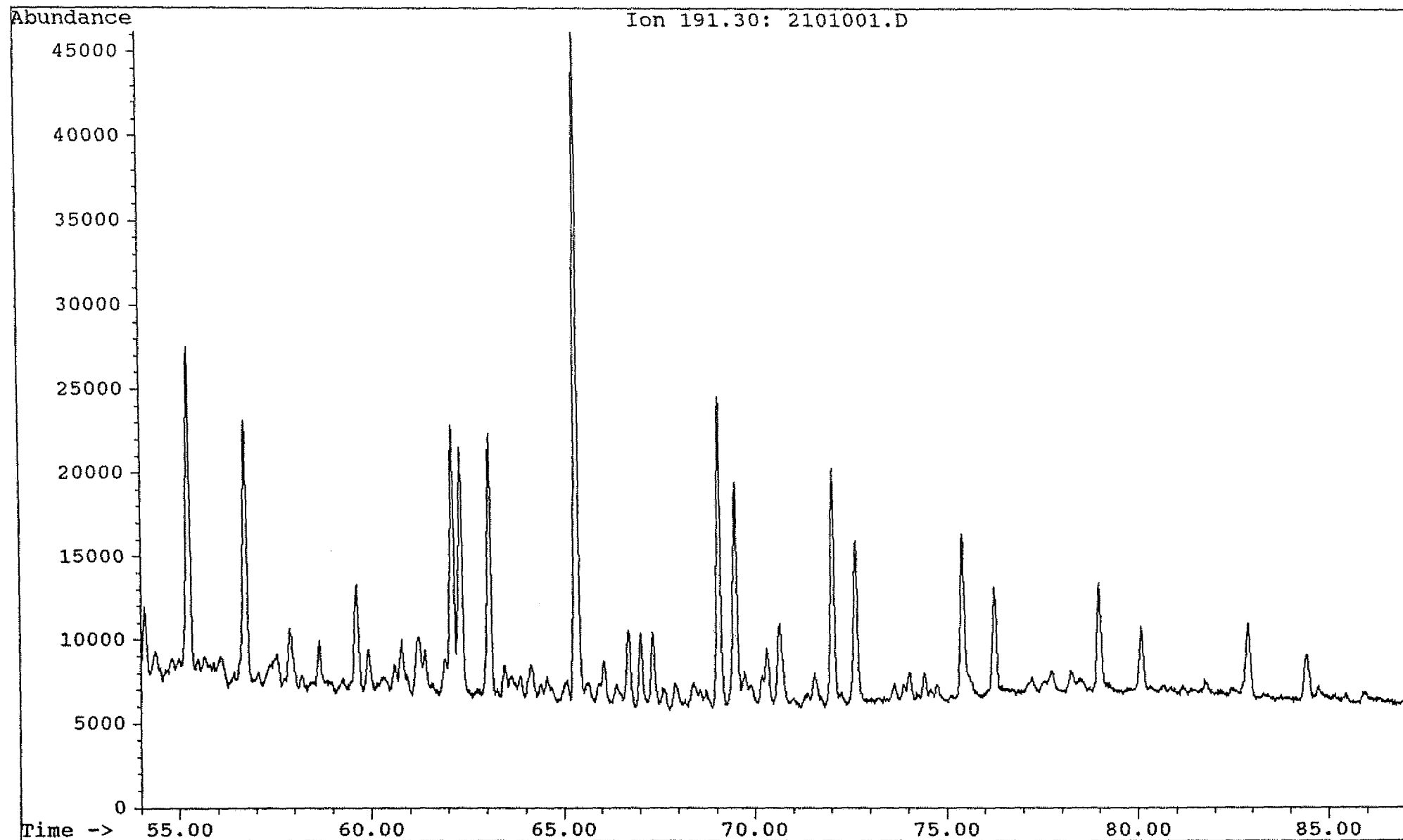
Inj: Split

Date acquired: 5 Oct 92 10:07 am

Meth: BMS.M

Sample name:

WELL 7/12-4 3452,5 sat



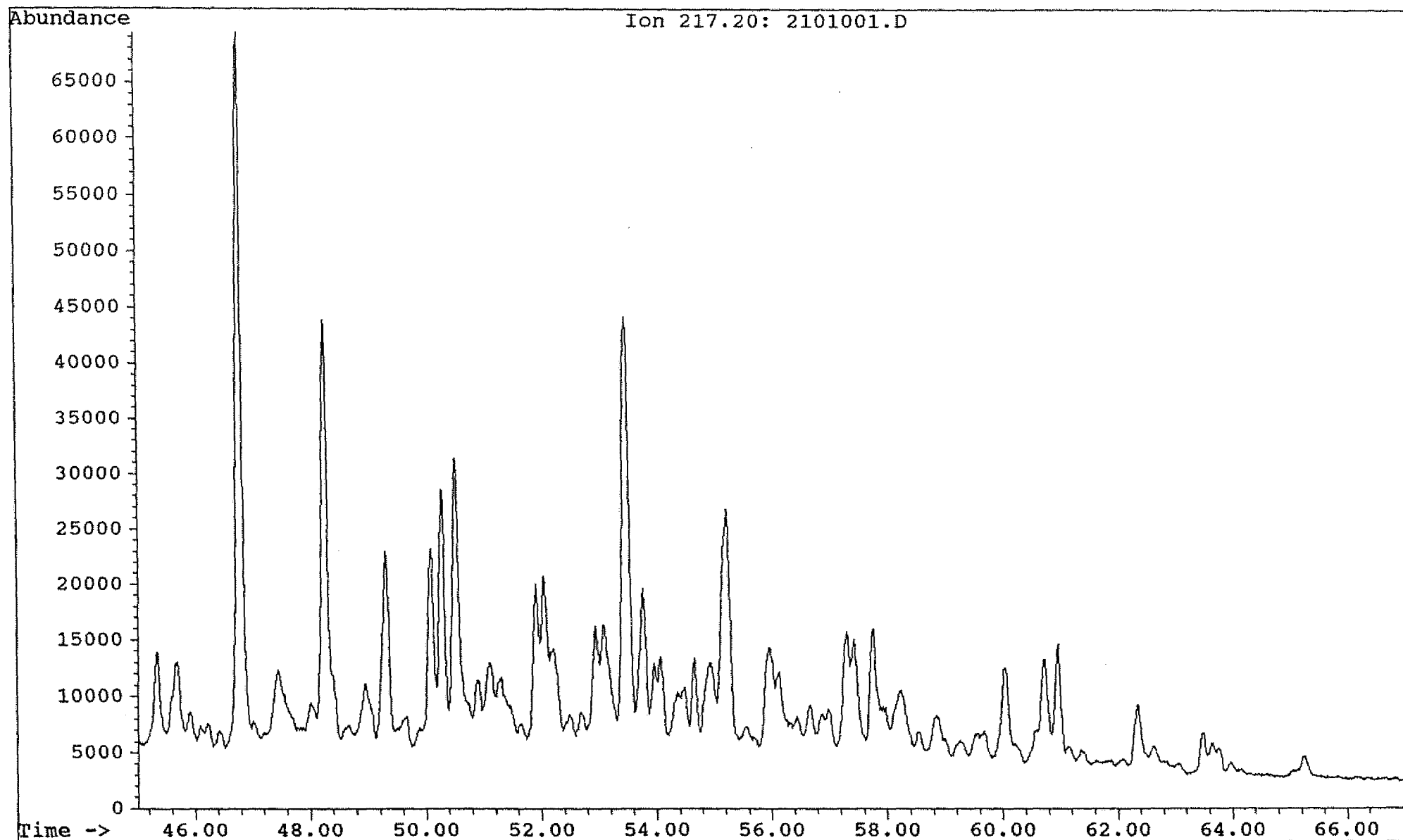
Saga Petroleum a.s.

Date acquired: 5 Oct 92 10:07 am

File: C:\CHEMPC\DATA\KVAD7\_15\2101001.D Inst: HP5971A Inj: Split Meth: BMS.M

Sample name:

WELL 7/12-4 3452,5 sat





Saga Petroleum a.s.

File: C:\CHEMPC\DATA\KVAD7\_15\2101001.D

Inst: HP5971A

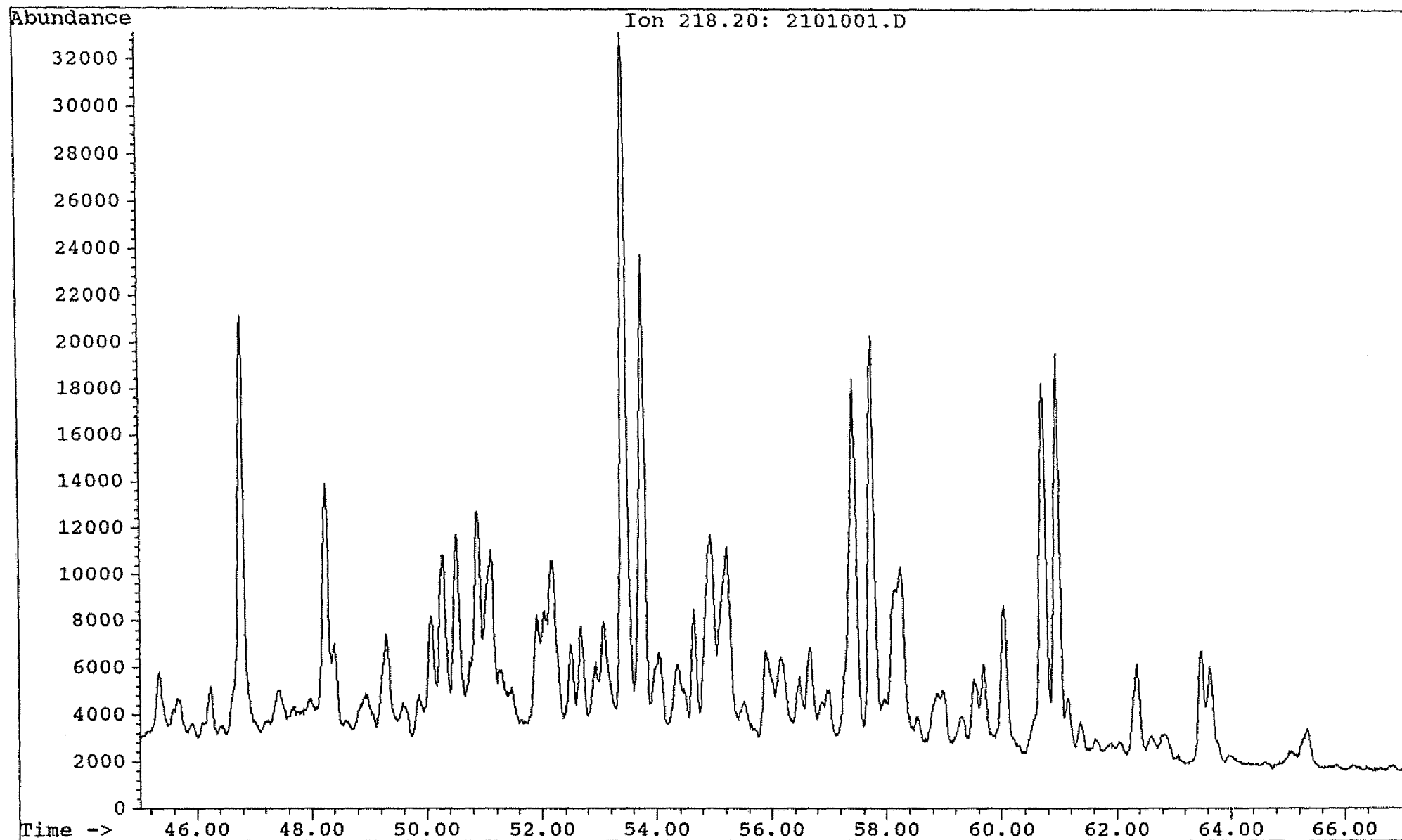
Inj: Split

Date acquired: 5 Oct 92 10:07 am

Meth: BMS.M

Sample name:

WELL 7/12-4 3452,5 sat



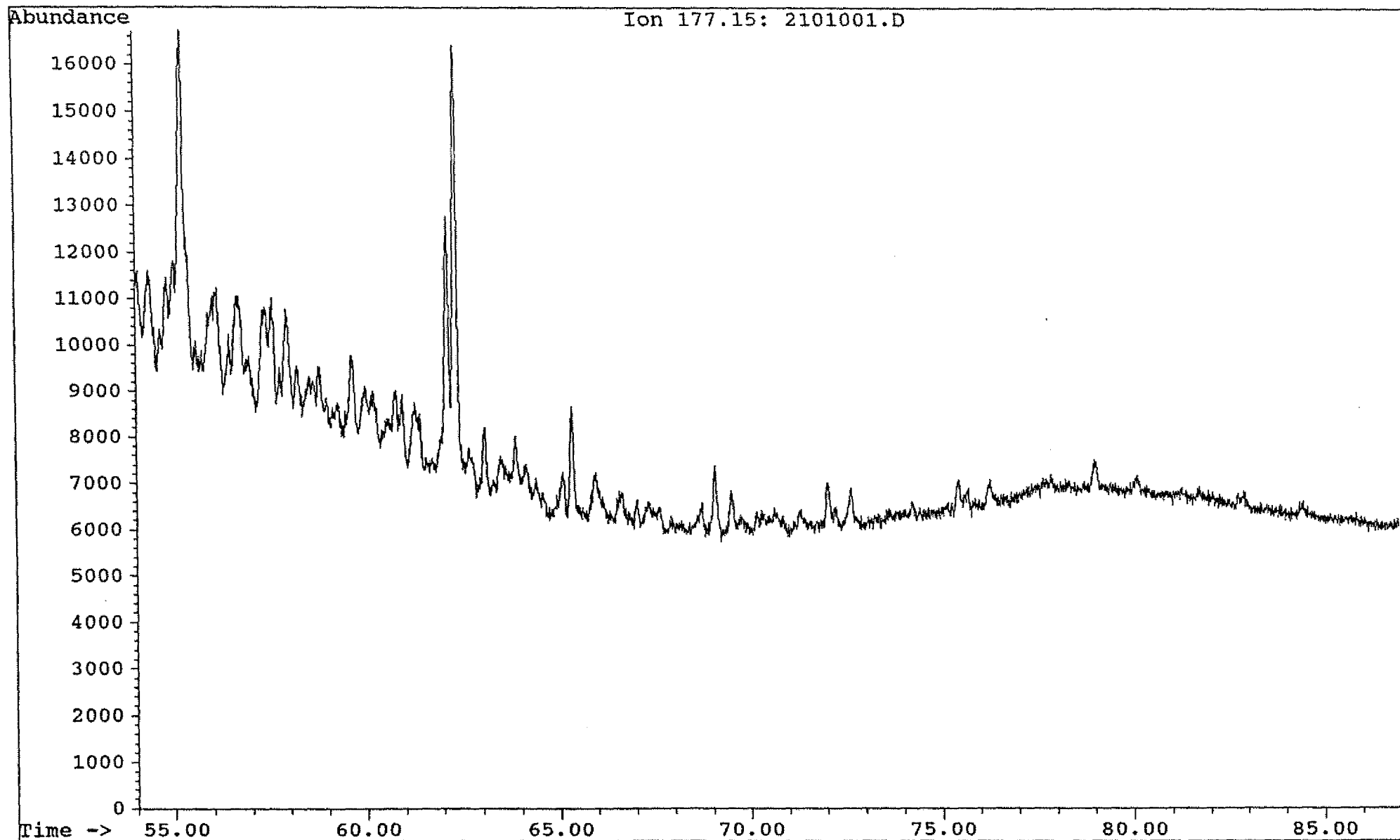
Saga Petroleum a.s.

Date acquired: 5 Oct 92 10:07 am

File: C:\CHEMPC\DATA\KVAD7\_15\2101001.D Inst: HP5971A Inj: Split Meth: BMS.M

Sample name:

WELL 7/12-4 3452,5 sat



Saga Petroleum a.s.

File: C:\CHEMPC\DATA\KVAD7\_15\1601002.D

Inst: HP5971A

Inj: Split

Date acquired: 2 Oct 92 4:52 pm

Meth: BMS.M

Sample name:

WELL 7/12-4 3527,7 sat

