

BP013873



BP PETROLEUM DEVELOPMENT LTD. NORWAY

OIL GEOCHEMISTRY
ON 7/12-2 & 7/12-4 OILS
by
M. Bjorøy, IKU

EXPLORATION LIBRARY
GL/NO/238

BP PETROLEUM DEVELOPMENT LTD., NORWAY U/A

OIL GEOCHEMISTRY
ON 7/12-2 & 7/12-4 OILS
by
M. BJORØY, IKU

Notes recovered from file
665/9 & made into
report on 15/10/81.

GL/NO/238

Masspec Analytical (Specialty Services) Limited

Woodchester, Stroud, Gloucestershire GL5 5HT, United Kingdom Telephone: Amberley (045-387) 3293 Telex: 43221

IKU SAMPLES

STERANE (m/e 217), AROMATIC STERANES (m/e 253) AND TRITERPANE

(m/e 191) DISTRIBUTIONS FOR SAMPLES:

E - 5565

E - 5566

7/12-4 (Jurassic)
7/12-2 (Triassic?),
oil geochem.



E. J. Parks (U.S.A.), L. Batchelor (U.S.A.), E. R. Aemisegger (U.S.A.).

Directors: Peter Benoliel (U.S.A.), Geoffrey Eglinton D.Sc., F.R.S., James Maxwell Ph.D., Noel Sandiford, *Managing*, Reginald Trotter, *Chairman*.

Paul Brooks Ph.D., *Laboratory Manager*, Robert Large Ph.D., *Customer Liaison*, Derek Chapman, *Secretary*.

IKU SAMPLESTRITERPANES

SAMPLE	TRITERPANE RATIOS				
	1/2	2/3	3/4	6/3	6/4
E - 5565	1.3	0.73	0.5	0.85	0.42
E - 5566	2.1	0.5	1.5	0.68	1.0

MF RATIOS

SAMPLE	217/191	253/217
E - 5565	1.22	6.3
E - 5566	1.73	1.74

STERANE RATIOS

SAMPLE	1/2	1/7	7/8	8/9	1/11	9/11	1/14	1/17	15/17	11/17	12/17	1/12	8/12	8/17	14/17
* E - 5565	1.4	1.3	7.1	0.18	2.7	1.6	5.5	7.0	2.0	2.6	0.6	11.0	1.1	0.7	1.3
* E - 5566	1.5	1.4	16.3	0.08	2.9	1.5	8.8	23.3	4.3	8.0	0.6	35	1.3	1.0	2.6
PARAMETER	1	2	3	4	5	6	7	8	9	10	11	12	13	14	15

regular steranes ie 8, 12 and 17 very low at threshold of measurement

IKU SAMPLES

TRITERPANES AND MF FACTORS

SAMPLE	1	2	3	4	6	217/191	253/217
7/12-4 E - 5565	25	19	26	52	22	11/9	69/11
7/12-2 R E - 5566	41	20	41	28	28	19/11	33/19

STERANES

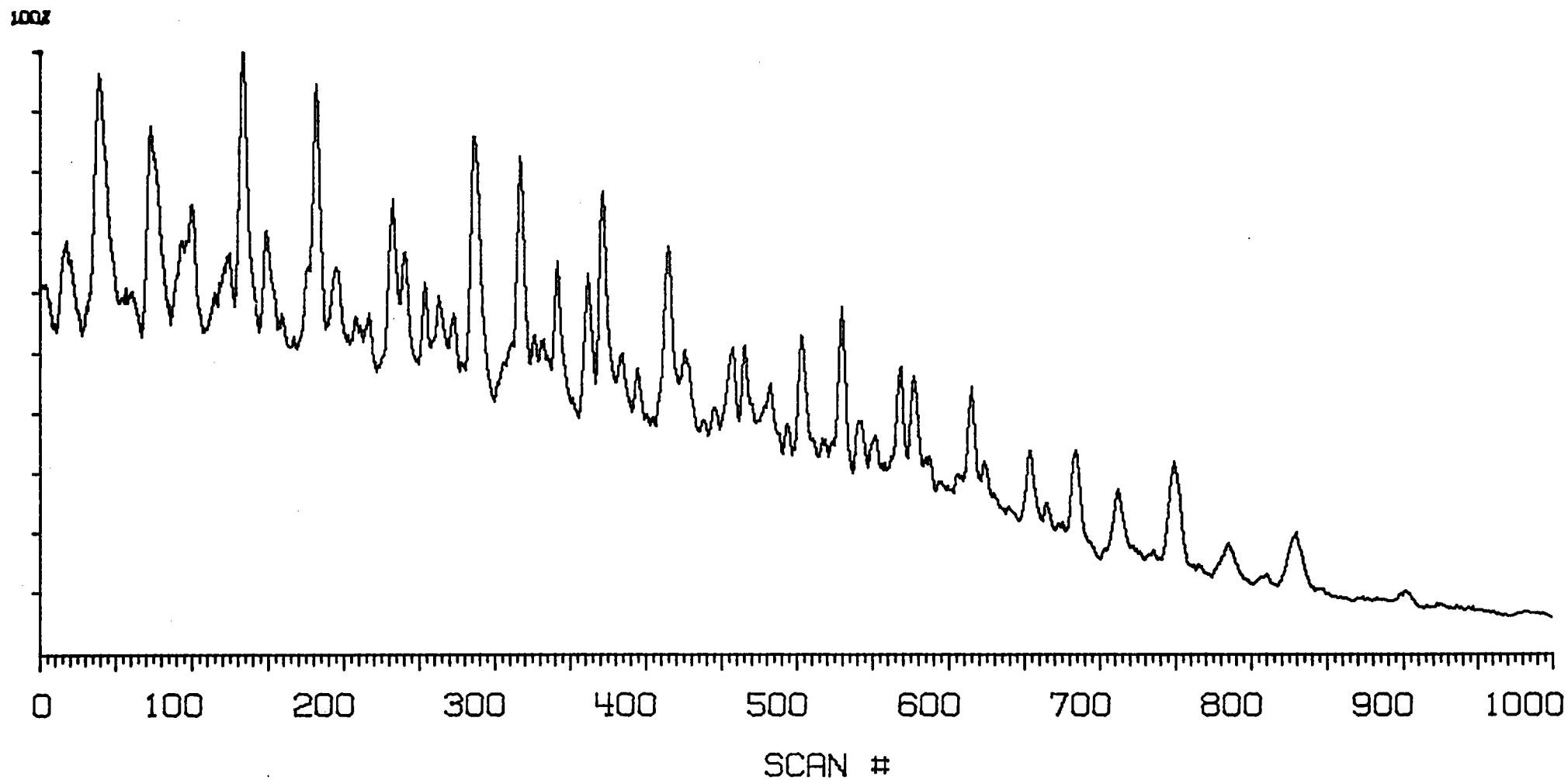
SAMPLE	1	2	4	7	8	9	11	12	14	15	17
7/12-4 E - 5565	77	55	34	57	8	45	29	7	14	22	11
7/12-2 R E - 5566	71	48	32	49	3	37	24	2	8	13	3

E 5565 B/C (3323)

MASSPEC ANALYTICAL

M/E 85 x 1

4 ION MID DATA

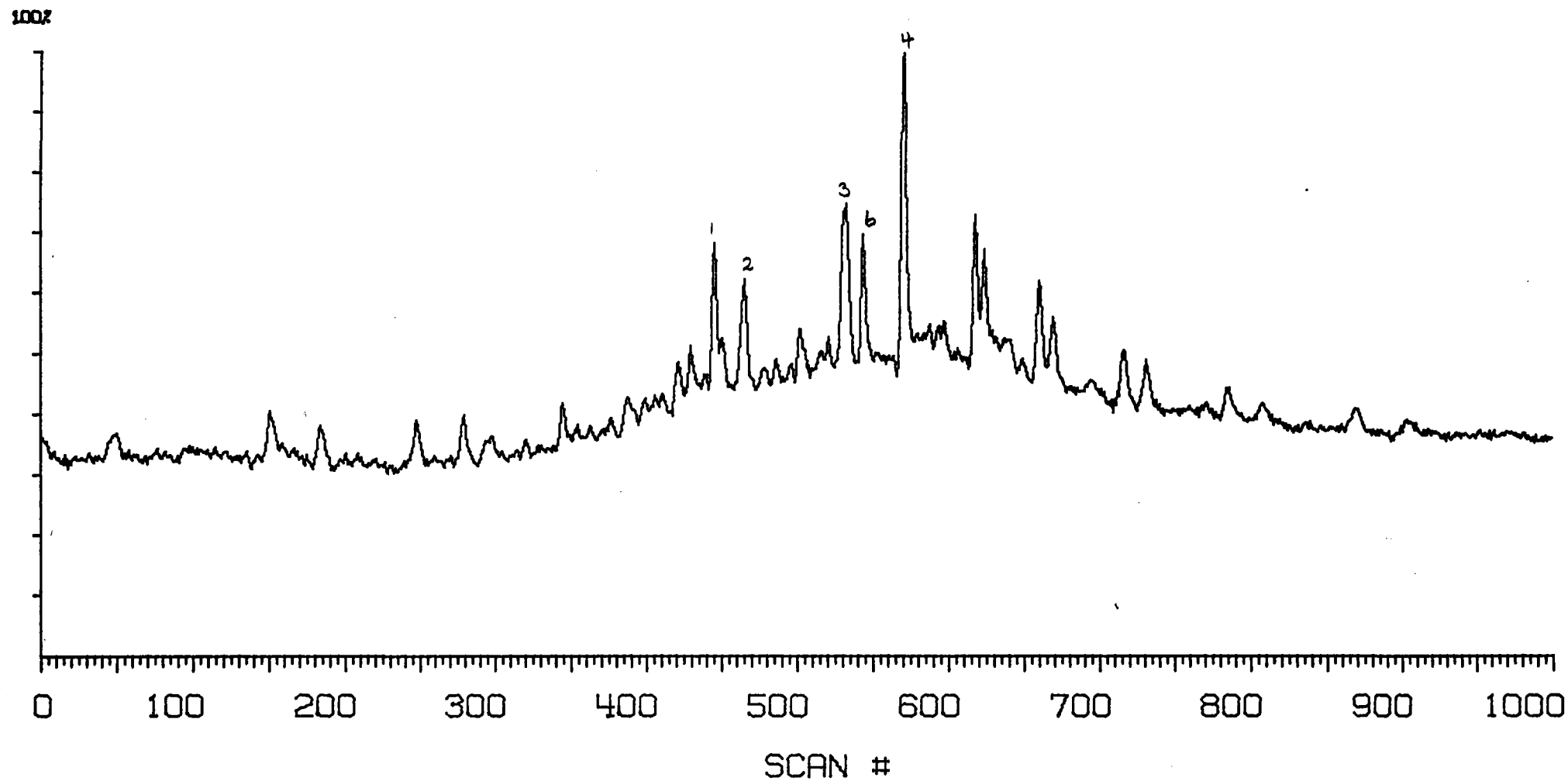


E 5565 B/C (3323)

MASSPEC ANALYTICAL

M/E 191 x 7

4 ION MID DATA

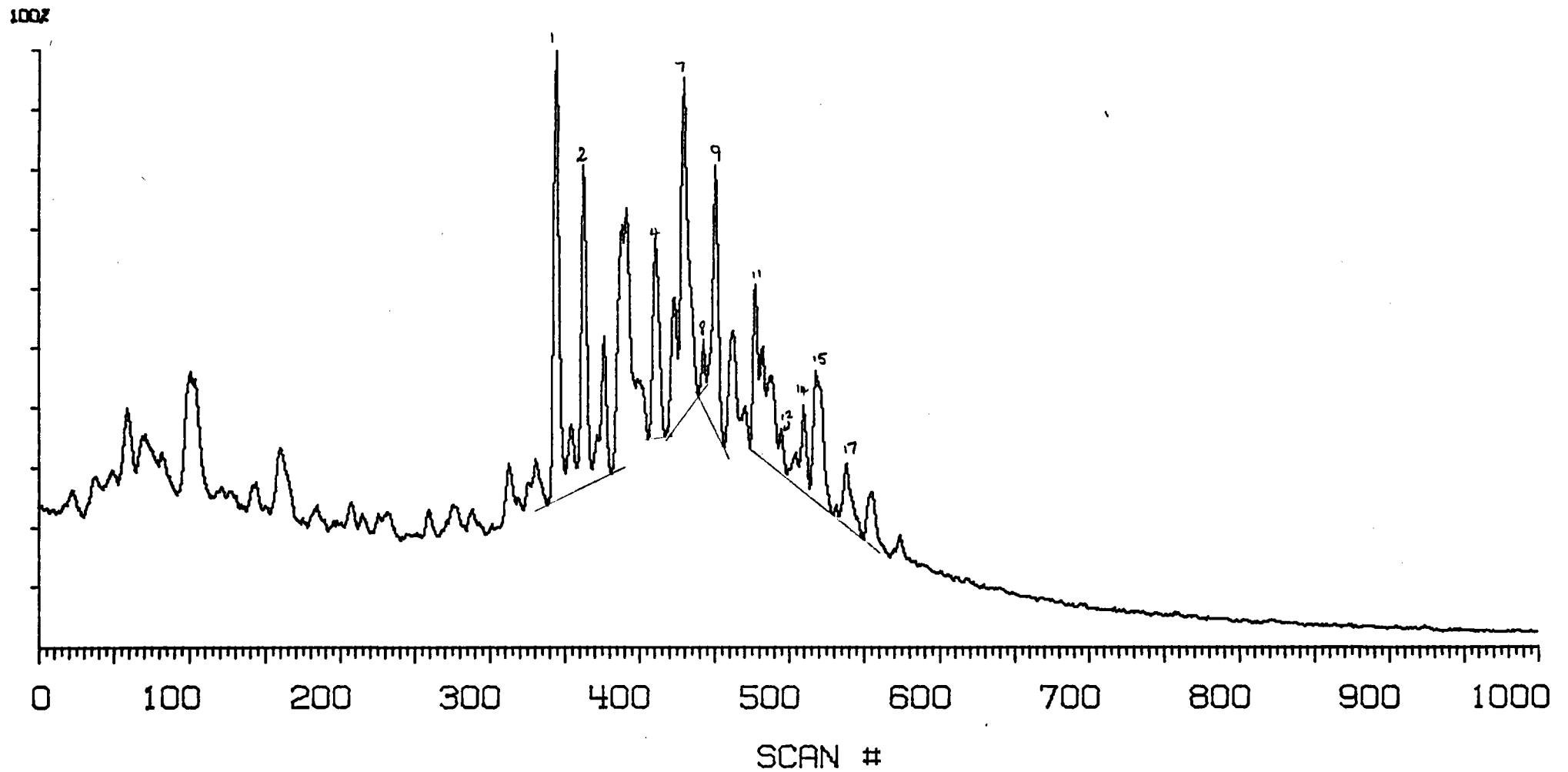


E 5565 B/C (3323)

MASSPEC ANALYTICAL

M/E 217 x 11

4 ION MID DATA

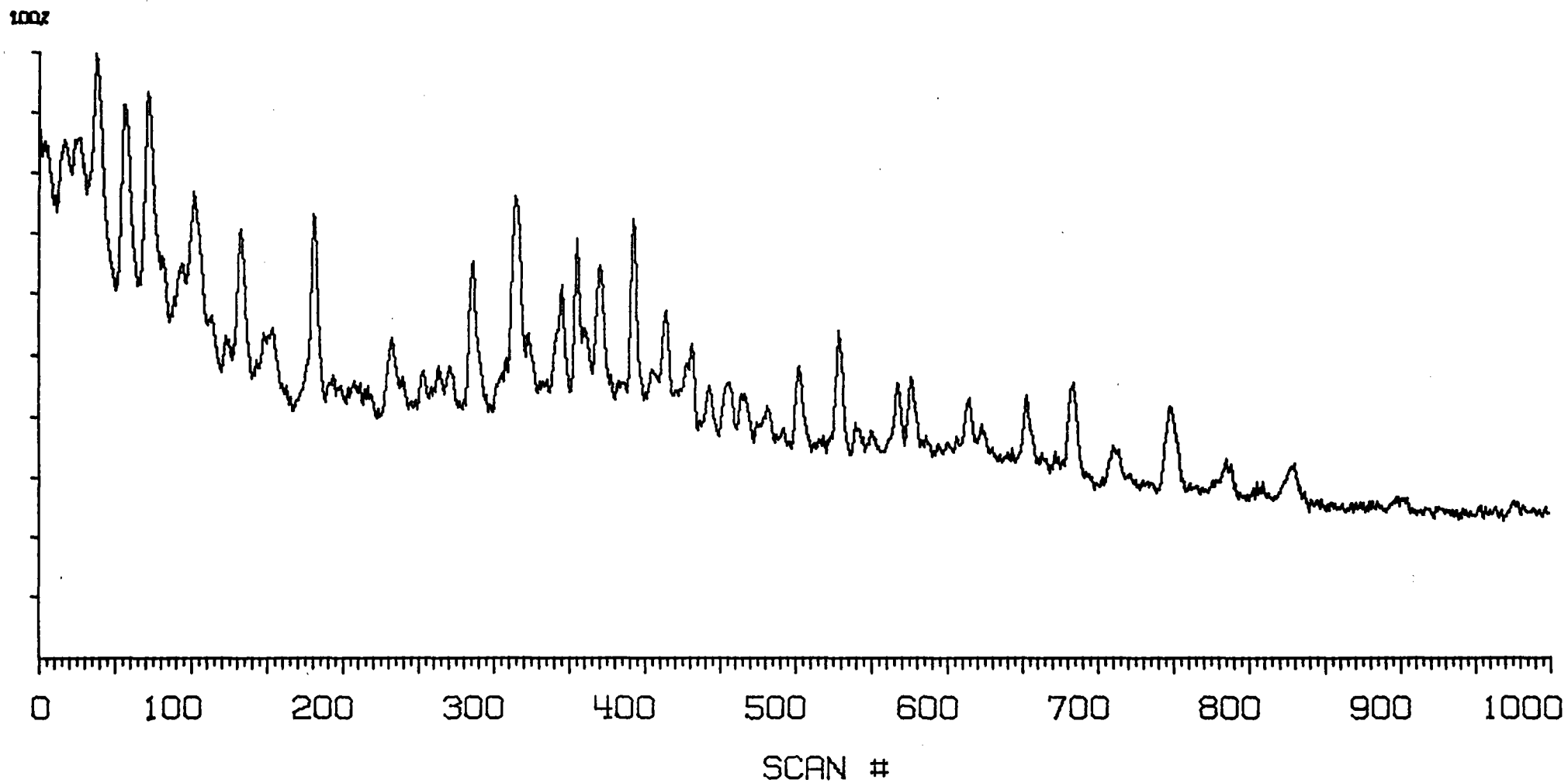


E 5565 B/C (3323)

MASSPEC ANALYTICAL

M/E 253 x 69

4 ION MID DATA



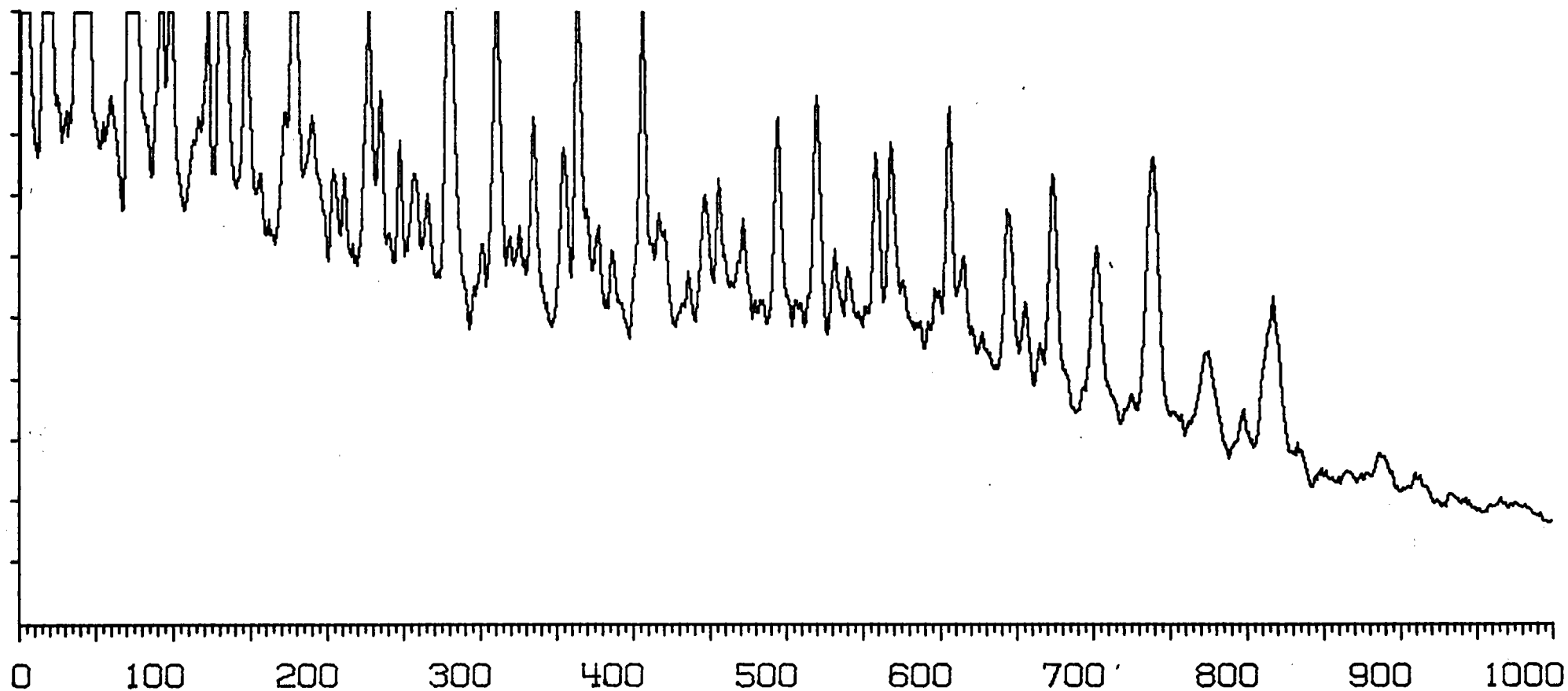
E 5566 B/C (3324)

MASSPEC ANALYTICAL

M/E 85 x 1

4 ION MID DATA

100%



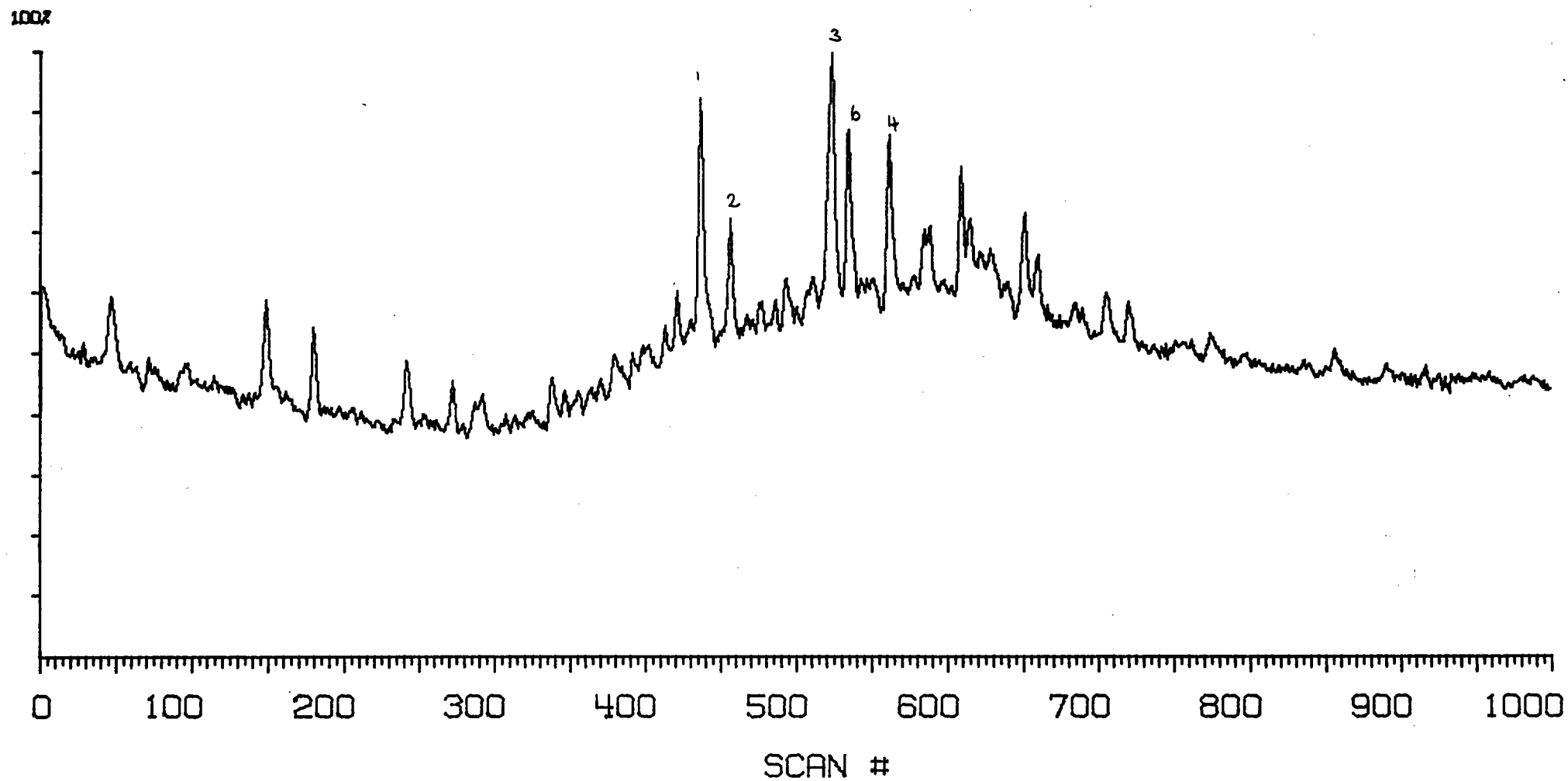
SCAN #

E 5566 B/C (3324)

MASSPEC ANALYTICAL

M/E 191 x 11

4 ION MID DATA

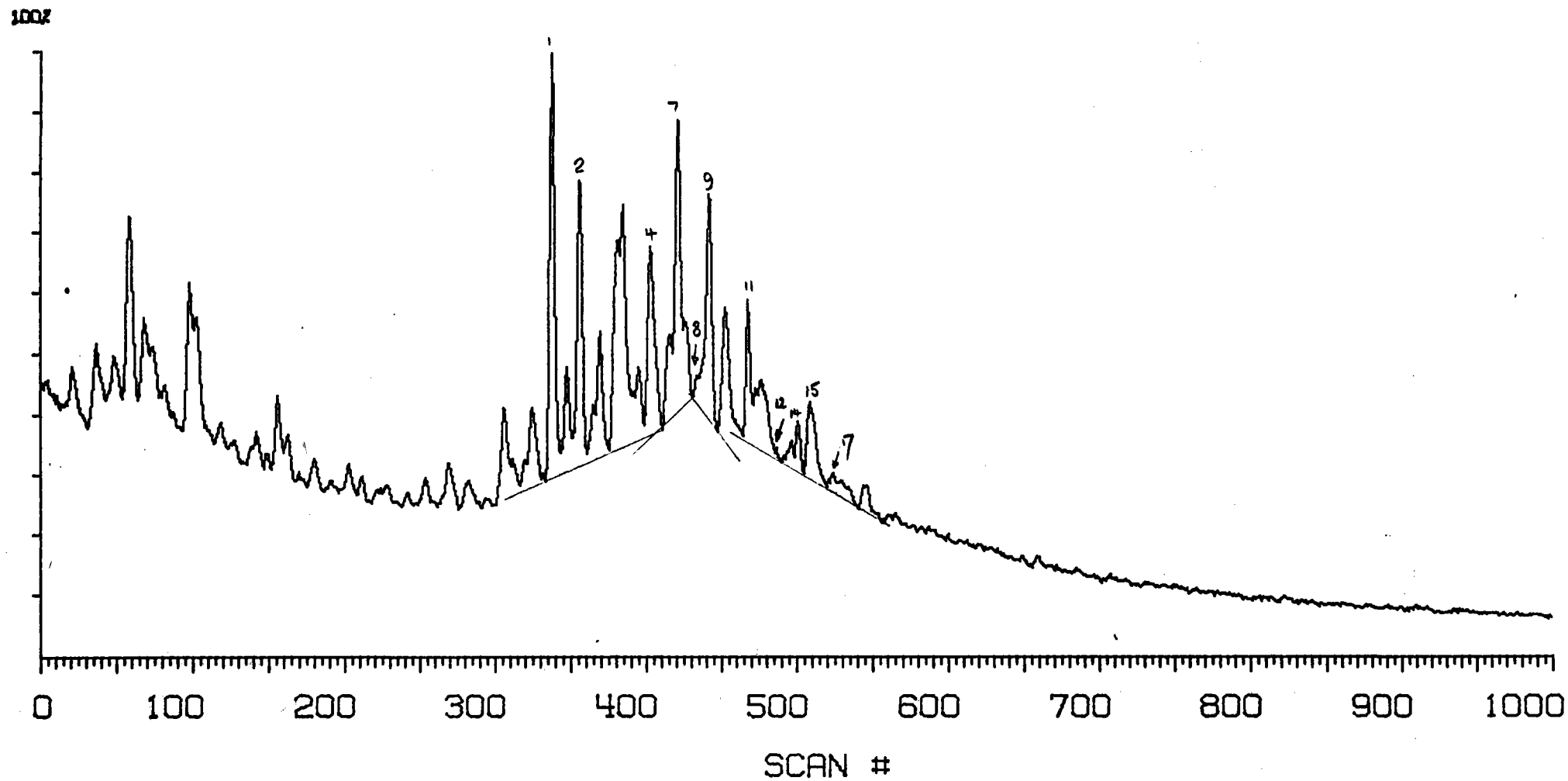


E 5566 B/C (3324)

MASSPEC ANALYTICAL

M/E 217 x 19

4 ION MID DATA



E 5566 B/C (3324)

MASSPEC ANALYTICAL

M/E 253 x 33

4 ION MID DATA

