



Document Id. : R-EUG-0218
 Reference Code :
 Date : AUGUST 1993
 Revision Number :

Title

GEOCHEMICAL DATA REPORT FOR WELL 7/12-5

Authors(s)

NIGEL MILLS

Abstract

Thirteen samples from the cored interval in well 7/12-5 have been analysed by Iatroscan (TLC-FID) and the saturated hydrocarbon fraction from 1 sample was analysed by GC-FID and GC/MS. The aromatic hydrocarbon fraction was also analysed by GC-FID.

NOT INCLUDED IN WELL TRADE.

BA-93-1964-1

Key Words

7/12-5, geochemistry, GC-FID, GC/MS, Iatroscan

Classification: Free Saga and partners Internal Confidential Strictly confidential

Org. Unit	EUG				
Reviewed	I. Horstad	<i>[Signature]</i>			
Accepted					
Approved	T. Høiland	<i>[Signature]</i>			

Hovedkontor/Head Office Oslo:

Adresse/Address
Kjerboveien 16
Postboks 490
N-1301 SANDVIKA

Telefon/Telephone
Nasjonalt 87 12 88 00
Intern. +47 87 12 88 00

Teleks/Telex
78852 Saga n
Telefax
Nasjonalt 87 128866
Intern. +47 87 128866

Driftdivisjon/Operations Division Stavanger:

Adresse/Address
Godesettdalen 8
Postboks 117
N-4003 FORUS

Telefon/Telephone
Nasjonalt 04 57 40 00
Intern. +47 4 57 40 00

Teleks/Telex
33244 sagap n
Telefax
Nasjonalt 04 570281
Intern. +47 4 570281

1 Objectives

The objective of this study was to characterise the extractable hydrocarbons in thirteen core samples from well 7/12-5.

2 General well information

The wells were drilled by BP as operator of licence 019 from 6.2.81 to 7.6.81 and reached a total depth of 4440 mRKB. The KB of the rig was 25 metres, and the water depth was 73 metres.

3 Samples and analytical scheme

Thirteen samples were picked from the cored interval in the wells on the 6th of August 1992. All samples were analysed by Iatroscan (TLC-FID), and the saturated hydrocarbon fractions from one sample were analysed by GC-FID and GC/MS.

4 Vitrinite reflectance

No samples were analysed.

5 TOC and Rock Eval

No samples were analysed.

6 Iatroscan (TLC-FID)

Thirteen samples were analysed, and the results are tabulated in table 1.

7 GC-FID

The saturated and aromatic hydrocarbon fractions from 1 sample were analysed by GC-FID. Since the evaporative loss has affected the relative concentration of individual compounds, no ratios were calculated. The GC-FID chromatograms are shown in figure 1.

8 GC/MS

The saturated hydrocarbon fraction from the sample was analysed by GC/MS and the mass chromatograms for m/z 191, 177, 217 and 218 are shown in figure 2.

9 Stable carbon isotopes

No samples were analysed.

Tab. 1

SAGLAB RESULTS MANAGEMENT : EXTRACTION ANALYSIS RESULTS in mg/g Rock

Data for Well 7/12-5

Page 1

Type	St.Depth	En.Depth	Weight (g)	EOM mg/g Rock	EOM mg/g TOC	Sat (mg/g)	Aro (mg/g)	NSO (mg/g)	Asph (mg/g)	Polars (mg/g)	TOC (%)	M/I
CCP	3844.55	3844.55	2.63	5.83		2.87	0.51			2.46		I
CCP	3852.45	3852.45	2.58	4.99		2.65	0.47			1.87		I
CCP	3858.65	3858.65	2.79	2.31		1.07	0.29			0.95		I
CCP	3861.68	3861.68	3.28	3.59		1.90	0.51			1.18		I
CCP	3868.78	3868.78	2.37	3.06		1.59	0.00			1.47		I
CCP	3871.61	3871.61	2.80	0.25		0.03	0.00			0.22		I
CCP	3875.01	3875.01	2.59	0.25		0.00	0.00			0.25		I
CCP	3882.21	3882.21	2.76	0.29		0.05	0.00			0.29		I
CCP	3886.21	3886.21	2.60	0.19		0.00	0.00			0.19		I
CCP	3889.57	3889.57	2.56	0.26		0.00	0.00			0.26		I
CCP	3895.35	3895.35	2.55	0.14		0.00	0.00			0.14		I
CCP	3897.25	3897.25	1.81	0.11		0.00	0.00			0.11		I
CCP	3899.97	3899.97	1.88	0.09		0.00	0.00			0.09		I
Averages this Well:				1.64	0.00	0.78	0.14	0.00	0.00	0.73	0.00	

13 RESULT(s) selected ..., from the following search criteria:

Nat: NOR, Well: 7/12-5, Type:
CCP, Depth between: 0.000 and
99999.990 m

SAGLAB RESULTS MANAGEMENT : EXTRACTION ANALYSIS RESULTS in mg/g Rock

Data for Well 7/12-5

Page 2

Type	St.Depth	En.Depth	Weight (g)	EOM mg/g Rock	EOM mg/g TOC	Sat (mg/g)	Aro (mg/g)	NGO (mg/g)	Asph (mg/g)	Polars (mg/g)	TOC (%)	M/I
Averages all Wells:				1.64	0.00	0.78	0.14	0.00	0.00	0.73	0.00	

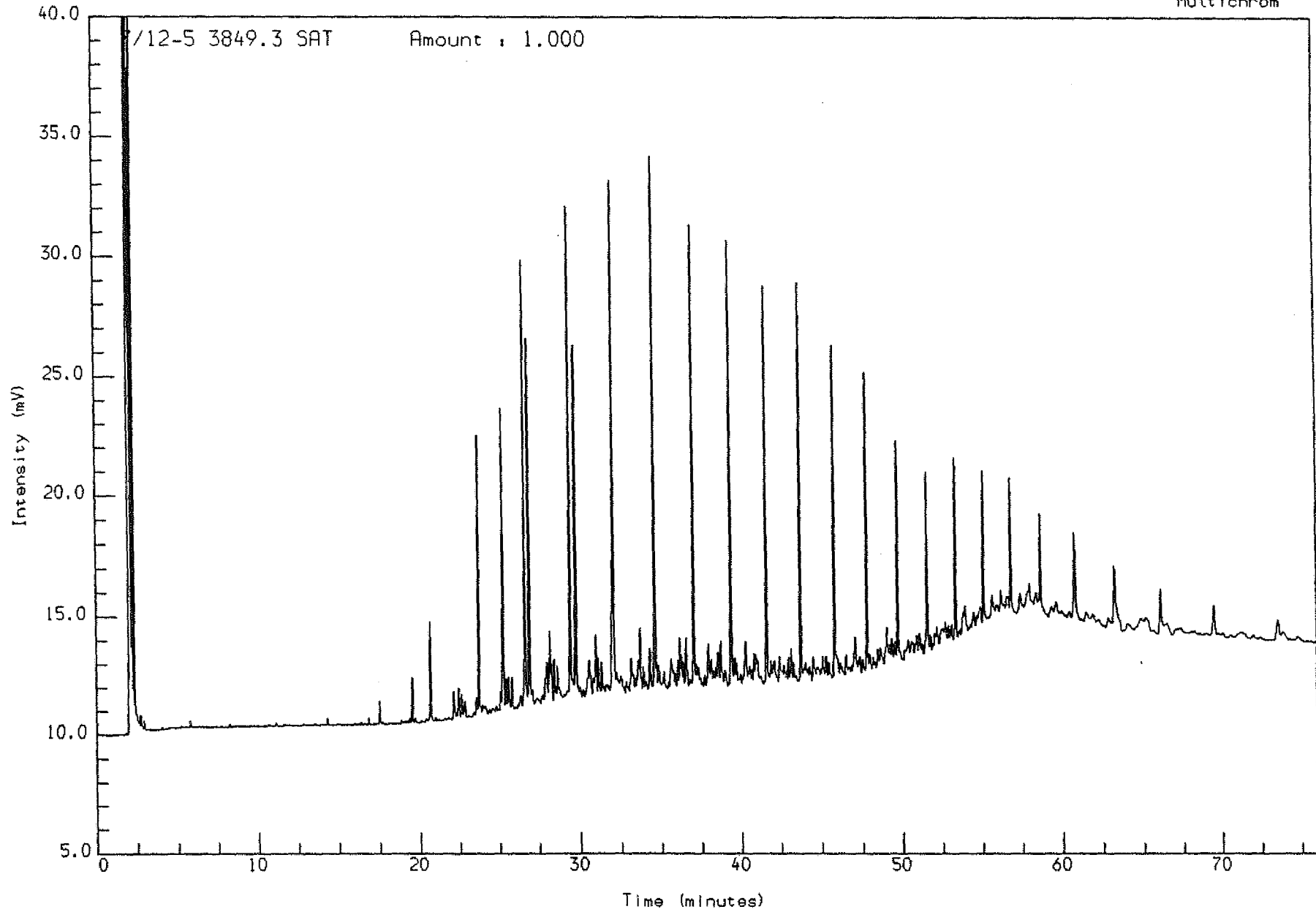
13 RESULT(s) selected ..., from the following search criteria:

Nat: NOR, Well: 7/12-5, Type:
CCP, Depth between: 0.000 and
99999.990 m

Fig. 1

Analysis Name : [D PROJECT] 3 S102,3,1.

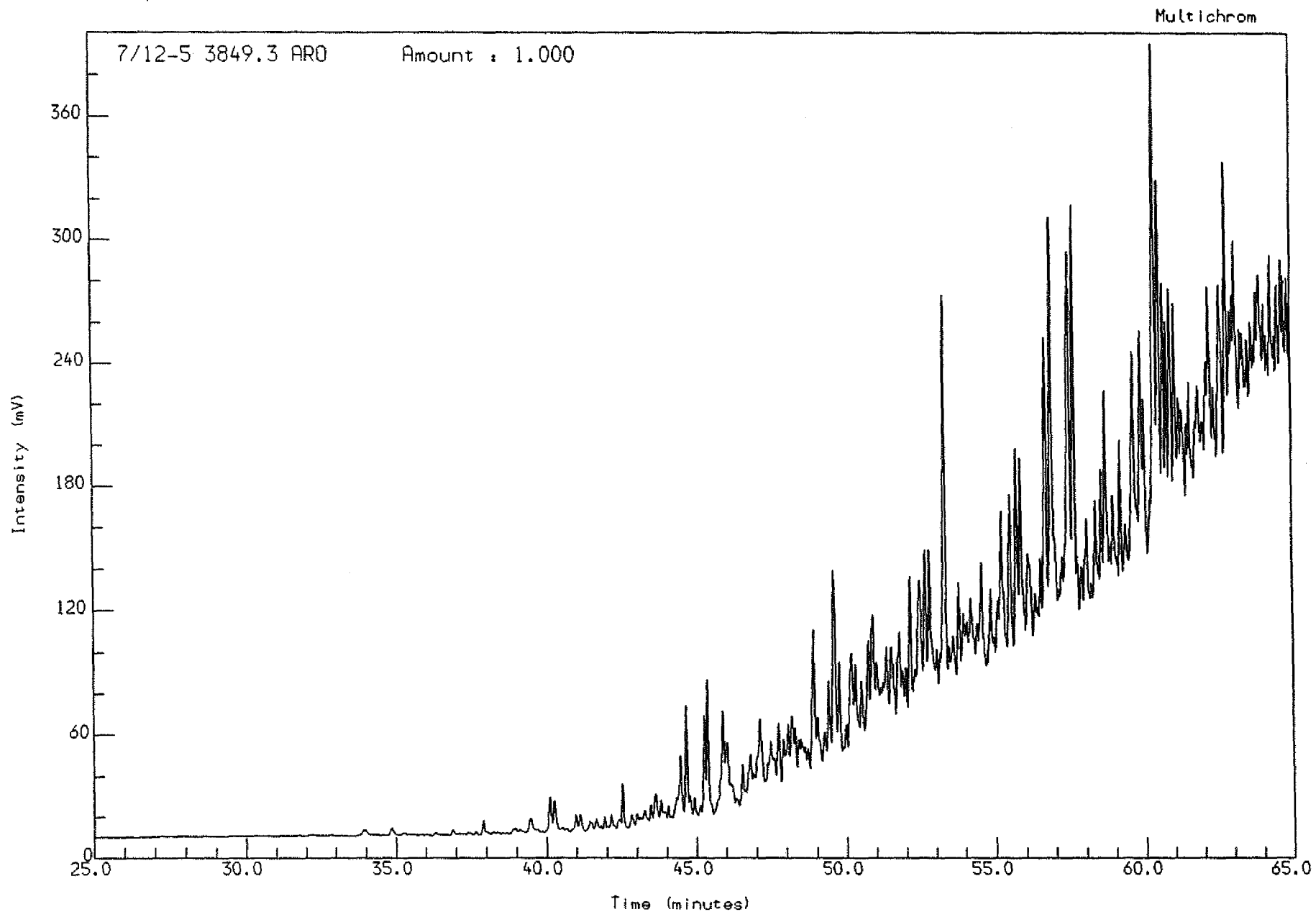
Multichrom



Acquired on 30-SEP-1992 at 13:24

Reported on 2-OCT-1992 at 13:18

Analysis Name : [PROJECT] 1 A157,10,1.



Acquired on 2-OCT-1992 at 19:58

Reported on 5-OCT-1992 at 13:17

Fig. 2

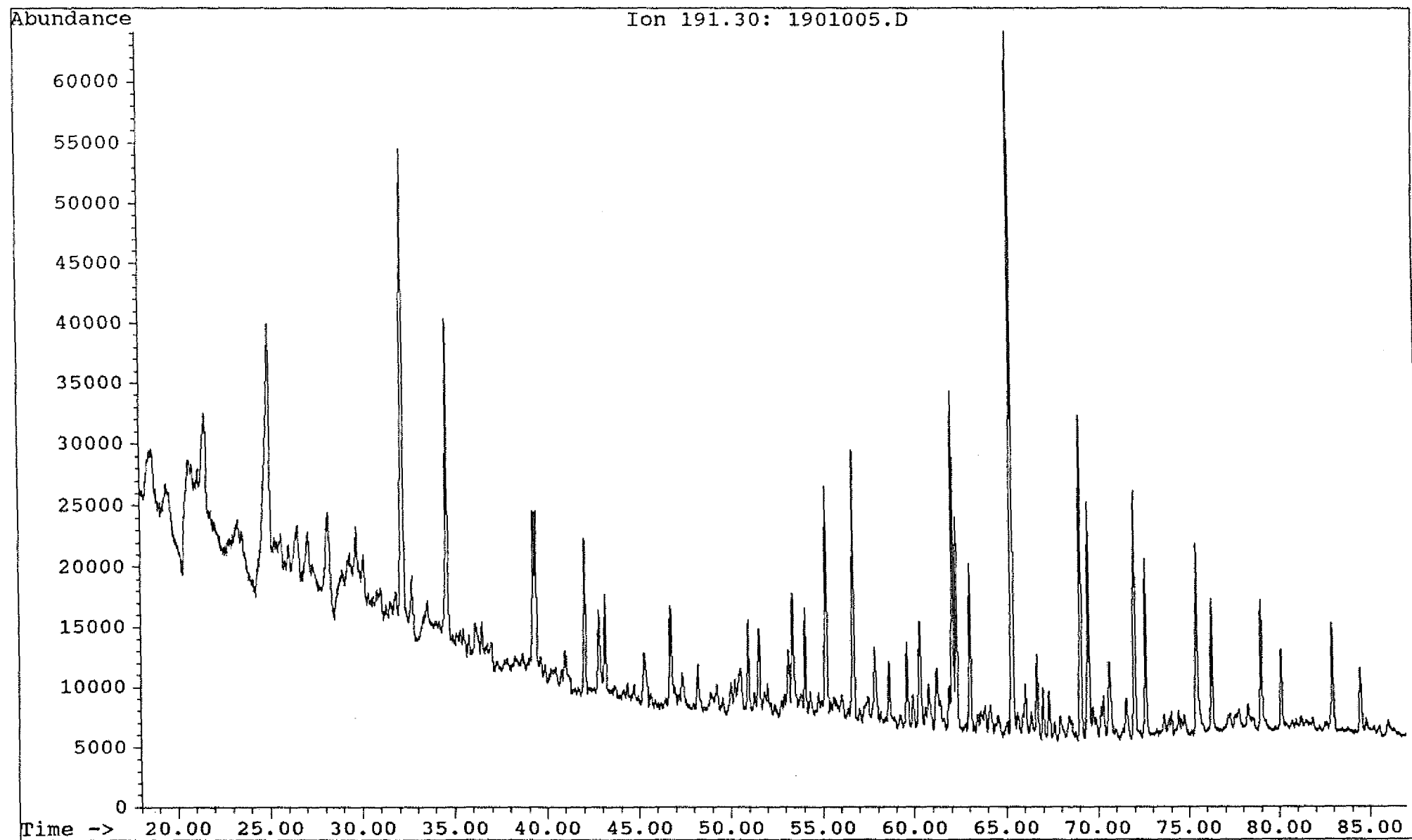
Saga Petroleum a.s.

File: C:\CHEMPC\DATA\KVAD7_15\1901005.D Inst: HP5971A Inj: Split Meth: BMS.M

Date acquired: 2 Oct 92 10:02 pm

Sample name:

WELL 7/12-5 3849,3 sat

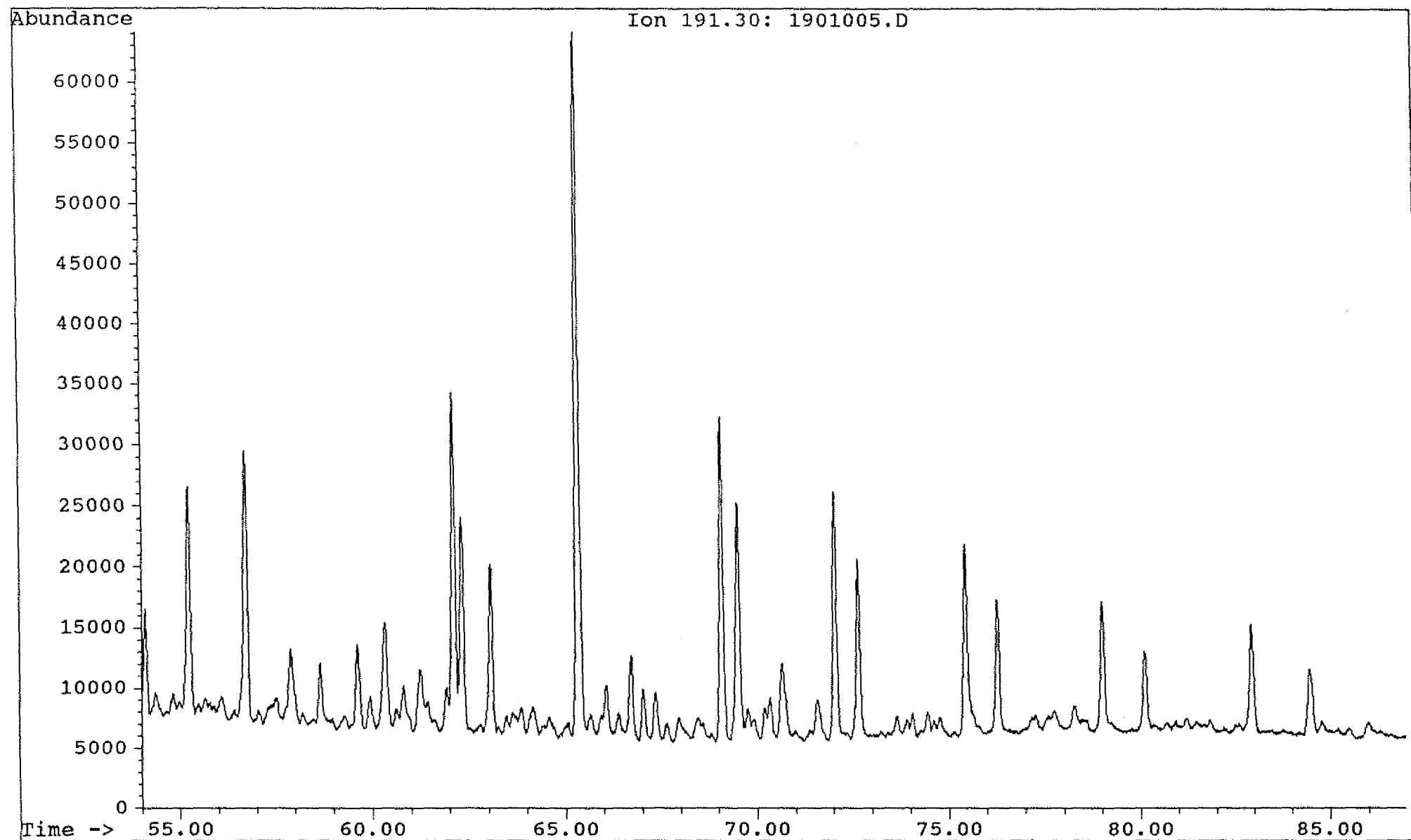


Saga Petroleum a.s.

Date acquired: 2 Oct 92 10:02 pm

File: C:\CHEMPC\DATA\KVAD7_15\1901005.D Inst: HP5971A Inj: Split Meth: BMS.M

Sample name: WELL 7/12-5 3849,3 sat



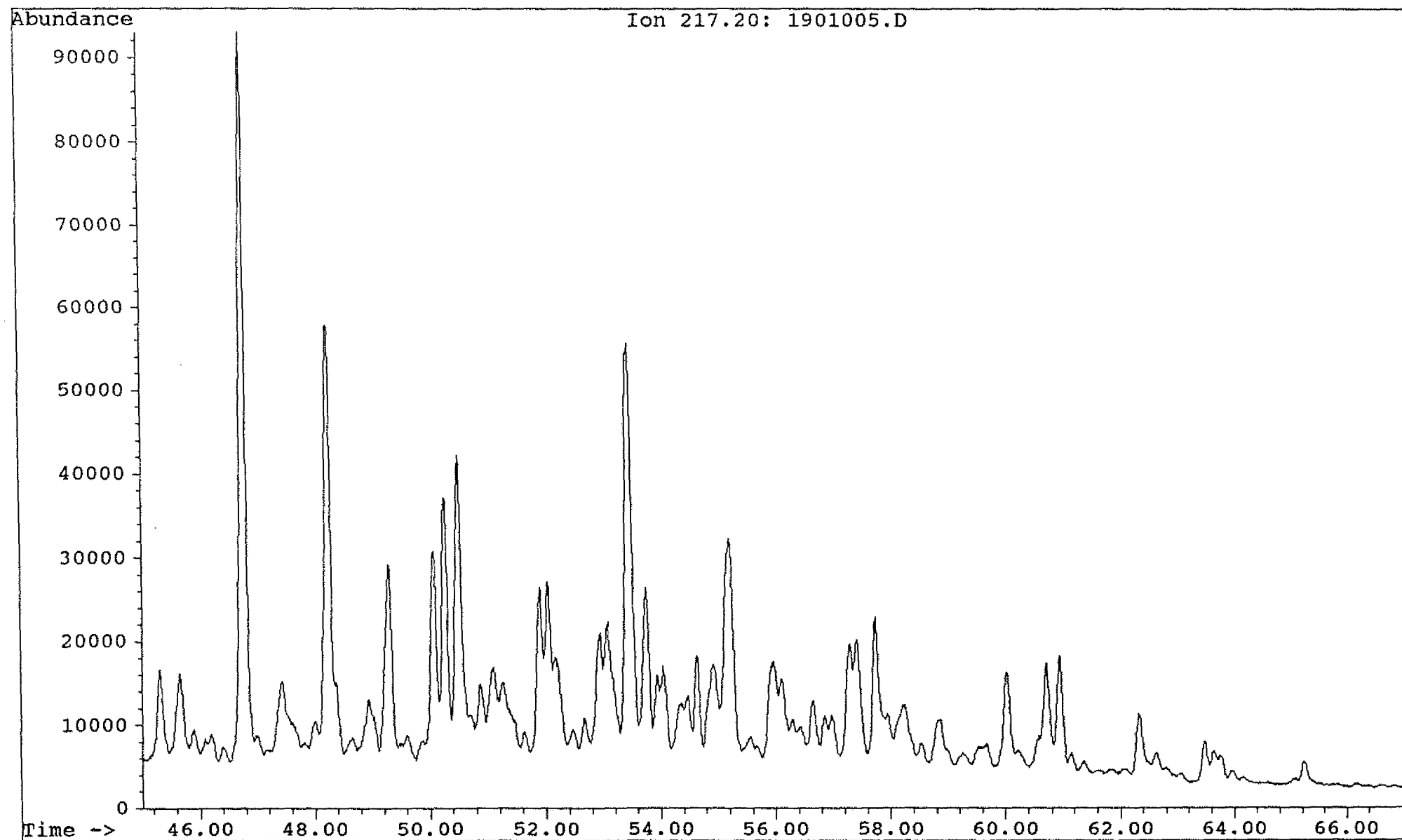
Saga Petroleum a.s.

Date acquired: 2 Oct 92 10:02 pm

File: C:\CHEMPC\DATA\KVAD7_15\1901005.D Inst: HP5971A Inj: Split Meth: BMS.M

Sample name:

WELL 7/12-5 3849,3 sat



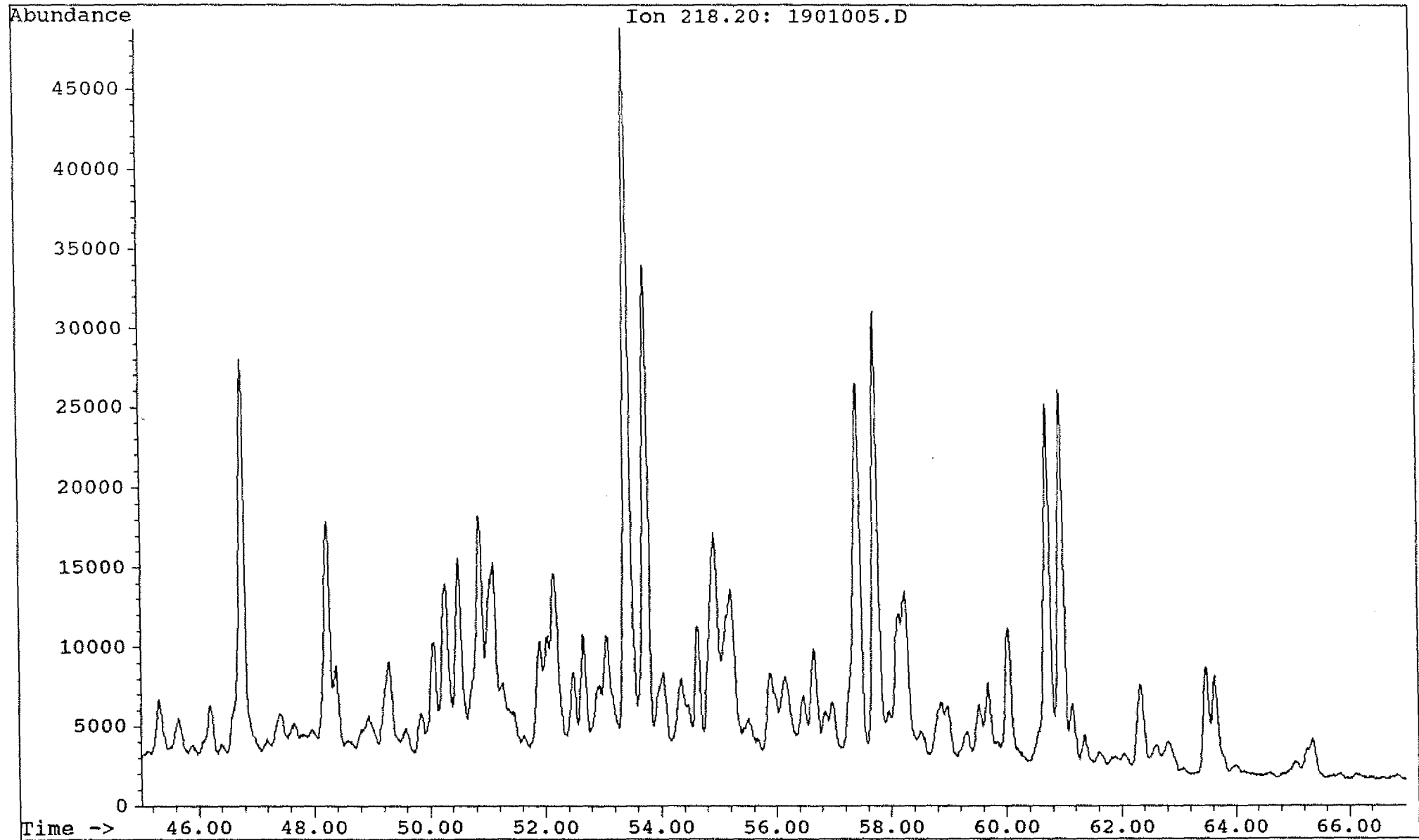
Saga Petroleum a.s.

Date acquired: 2 Oct 92 10:02 pm

File: C:\CHEMPC\DATA\KVAD7_15\1901005.D Inst: HP5971A Inj: Split Meth: BMS.M

Sample name:

WELL 7/12-5 3849,3 sat



Saga Petroleum a.s.

Date acquired: 2 Oct 92 10:02 pm

File: C:\CHEMPC\DATA\KVAD7_15\1901005.D Inst: HP5971A Inj: Split Meth: BMS.M

Sample name: WELL 7/12-5 3849,3 sat

