



Document Id. : R-EUG-0235
 Reference Code :
 Date : AUGUST 1993
 Revision Number :

Title

GEOCHEMICAL DATA REPORT FOR WELL 6407/1-3

Authors(s)

VENCHE BJERKREIM PEDERSEN

Abstract

49 samples from the cored interval in well 6407/1-3 have been analysed by Iatroscan (TCL-FID). 3 samples were analysed by GC-FID and GC/MS.

NOT INCLUDED IN WELL TRADE.

BA-93-2137-1
 07 OKT. 1993
REGISTRERT
 OLJEDIREKTORATET

Key Words

6407/1-3, geochemistry, Iatroscan, GC-FID, GC/MS

Classification: Free Saga and partners Internal Confidential Strictly confidential

Org. Unit	EUG			
Reviewed	N. Mills			
Accepted				
Approved	T. Haaland			

Hovedkontor/Head Office Oslo:

Adresse/Address: Kjarboveien 16, Postboks 490, N-1301 SANDVIKA
 Telefon/Telephone: Nasjonalt 67 12 66 00, Intern. +47 67 12 66 00

Teleks/Telex: 78852 Saga n
 Telefon: 78852 Saga n
 Telefax: Nasjonalt 67 126666, Intern. +47 67 126666

Driftsdivisjon/Operations Division Stavanger:

Adresse/Address: Godesetdalen 8, Postboks 117, N-4003 FORUS
 Telefon/Telephone: Nasjonalt 04 57 40 00, Intern. +47 4 57 40 00

Teleks/Telex: 33244 sagap n
 Telefon: Nasjonalt 04 570281, Intern. +47 4 570281

1 Objectives

The objective of this study was to characterise the extractable hydrocarbons in 49 core samples from well 6407/1-3.

2 General well information

The well was drilled by Statoil as operator of licence 073 from 17.9.83 to 16.8.84 and reached a total depth of 4469 mRKB. The KB of the rig was 29 metres and the water depth was 286 metres.

3 Samples and analytical scheme

49 samples were picked from the cored interval on June 15th 1992. All samples were analysed by Iatroscan (TLC-FID), and the saturated hydrocarbon fractions of 3 samples were analysed by GC-FID and GC/MS.

4 Vitrinite reflectance

No samples were analysed.

5 TOC and Rock Eval

No samples were analysed.

6 Iatroscan (TLC-FID)

49 samples were analysed, and the results are tabulated in Table 1.

7 GC-FID

The saturated hydrocarbon fractions from 3 samples were analysed by Saga Petroleum a.s.. The GC-FID chromatograms are shown in figure 1.

8 GC/MS

The GC/MS analyses were performed by Saga Petroleum a.s. The saturated hydrocarbon fractions from the samples were analysed by GC/MS and the mass chromatograms for m/z 191, 177, 217 and 218 are shown in figure 2. Selected biological marker parameters manually measured by Saga are given in table 2.

9 Stable carbon isotopes

No samples were analysed.

Table 1.

SAGLAB RESULTS MANAGEMENT : EXTRACTION ANALYSIS RESULTS in mg/g Rock

Data for Well 6407/1-3

Page 1

Type	St.Depth	En.Depth	Weight (g)	EOM mg/g Rock	EOM mg/g TOC	Sat (mg/g)	Aro (mg/g)	NSO (mg/g)	Asph (mg/g)	Polars (mg/g)	TOC (%)	M/I
CCP	3621.65	3621.65	2.67	0.22		0.08	0.00			0.14		I
CCP	3623.35	3623.35	2.84	0.20		0.11	0.00			0.10		I
CCP	3625.35	3625.35	3.03	0.15		0.08	0.00			0.07		I
CCP	3628.90	3628.90	2.77	0.19		0.08	0.00			0.11		I
CCP	3629.50	3629.50	2.91	0.31		0.14	0.00			0.17		I
CCP	3631.70	3631.70	3.13	0.38		0.18	0.05			0.16		I
CCP	3633.90	3633.90	2.99	0.26		0.20	0.06			0.00		I
CCP	3636.60	3636.60	2.79	0.34		0.18	0.00			0.15		I
CCP	3640.65	3640.65	3.24	0.29		0.14	0.00			0.15		I
CCP	3642.85	3642.85	2.94	0.37		0.19	0.05			0.14		I
CCP	3644.55	3644.55	3.30	0.28		0.14	0.00			0.13		I
CCP	3646.80	3646.80	2.90	0.36		0.26	0.00			0.10		I
CCP	3648.80	3648.80	3.14	0.21		0.11	0.00			0.10		I
CCP	3653.60	3653.60	3.15	0.25		0.15	0.00			0.10		I
CCP	3656.70	3656.70	3.14	0.41		0.16	0.00			0.25		I

49 RESULT(s) selected ..., from the following search criteria:

Company: SAG, Nat: NOR, Well:

6407/1-3, Type: CCP, Depth between:

0.000 and 99999.990 m, MPLC: I

SAGLAB RESULTS MANAGEMENT : EXTRACTION ANALYSIS RESULTS in mg/g Rock

Data for Well 6407/1-3

Page 2

Type	St.Depth	En.Depth	Weight (g)	EOM mg/g Rock	EOM mg/g TOC	Sat (mg/g)	Aro (mg/g)	NSO (mg/g)	Asph (mg/g)	Polars (mg/g)	TOC (%)	M/I
CCP	3657.67	3657.67	2.04	0.17		0.17	0.00			0.00		I
CCP	3659.90	3659.90	3.00	0.16		0.16	0.00			0.00		I
CCP	3662.45	3662.45	2.87	0.15		0.12	0.00			0.03		I
CCP	3664.75	3664.75	2.87	0.20		0.10	0.00			0.11		I
CCP	3666.70	3666.70	2.76	0.31		0.15	0.00			0.16		I
CCP	3668.65	3668.65	2.91	0.27		0.12	0.00			0.15		I
CCP	3670.65	3670.65	2.81	0.25		0.14	0.00			0.10		I
CCP	3673.65	3673.65	2.50	0.00		0.00	0.00			0.00		I
CCP	3676.70	3676.70	2.94	0.23		0.13	0.00			0.09		I
CCP	3679.50	3679.50	2.90	0.19		0.10	0.00			0.09		I
CCP	3682.55	3682.55	2.91	0.21		0.18	0.00			0.03		I
CCP	3684.60	3684.60	3.15	0.16		0.05	0.00			0.11		I
CCP	3687.70	3687.70	2.59	1.43		0.89	0.23			0.32		I
CCP	3688.50	3688.50	2.45	7.62		4.95	1.71			0.96		I
CCP	3689.75	3689.75	2.73	9.78		5.95	3.07			0.76		I

49 RESULT(s) selected ..., from the following search criteria:

Company: SAG, Nat: NOR, Well:

6407/1-3, Type: CCP, Depth between:

0.000 and 99999.990 m, MPLC: I

SAGLAB RESULTS MANAGEMENT : EXTRACTION ANALYSIS RESULTS in mg/g Rock

Data for Well 6407/1-3

Page 3

Type	St.Depth	En.Depth	Weight (g)	EOM mg/g Rock	EOM mg/g TOC	Sat (mg/g)	Aro (mg/g)	NSO (mg/g)	Asph (mg/g)	Polars (mg/g)	TOC (%)	M/I
CCP	3690.55	3690.55	2.64	7.45		4.56	2.24			0.65		I
CCP	3691.85	3691.85	2.94	7.97		4.90	2.64			0.43		I
CCP	3693.25	3693.25	2.87	10.18		6.02	3.53			0.63		I
CCP	3694.90	3694.90	2.35	7.81		4.76	2.45			0.61		I
CCP	3696.30	3696.30	2.76	13.19		7.53	4.72			0.94		I
CCP	3697.80	3697.80	2.84	9.46		5.66	2.96			0.84		I
CCP	3699.10	3699.10	2.58	9.00		5.58	2.63			0.79		I
CCP	3700.65	3700.65	3.07	9.48		5.63	2.70			1.15		I
CCP	3701.95	3701.95	2.75	8.07		4.93	2.40			0.74		I
CCP	3703.10	3703.10	3.09	8.95		5.44	2.90			0.62		I
CCP	3704.50	3704.50	2.86	7.67		4.77	2.42			0.49		I
CCP	3706.50	3706.50	2.47	2.41		1.62	0.51			0.28		I
CCP	3707.95	3707.95	2.54	2.88		2.11	0.63			0.14		I
CCP	3708.70	3708.70	2.25	3.58		2.28	0.91			0.39		I
CCP	3711.70	3711.70	2.54	0.17		0.08	0.00			0.09		I

49 RESULT(s) selected ..., from the following search criteria:

Company: SAG, Nat: NOR, Well:
6407/1-3, Type: CCP, Depth between:
0.000 and 99999.990 m, MPLC: I

SAGLAB RESULTS MANAGEMENT : EXTRACTION ANALYSIS RESULTS in mg/g Rock

Data for Well 6407/1-3

Page 4

Type	St.Depth	En.Depth	Weight (g)	EOM mg/g Rock	EOM mg/g TOC	Sat (mg/g)	Aro (mg/g)	NSO (mg/g)	Asph (mg/g)	Polars (mg/g)	TOC (%)	M/I
CCP	3715.90	3715.90	2.61	0.08		0.00	0.00			0.08		I
CCP	3748.75	3748.75	2.81	0.15		0.05	0.00			0.10		I
CCP	3752.90	3752.90	2.96	0.00		0.00	0.00			0.00		I
CCP	3755.83	3755.83	3.04	0.05		0.00	0.00			0.05		I
Averages this Well:				2.73	0.00	1.66	0.79	0.00	0.00	0.28	0.00	
Averages all Wells:				2.73	0.00	1.66	0.79	0.00	0.00	0.28	0.00	

49 RESULT(s) selected ..., from the following search criteria:
 Company: SAG, Nat: NOR, Well:
 6407/1-3, Type: CCP, Depth between:
 0.000 and 99999.990 m, MPLC: I

Table 2.

0 well	1	2 nat	3 formation	4	5 upper depth	6 lower depth	7 sample type	8 Ts/Tm
1 6407/1-3	6407/1-3	nor		saga_sept92	3689.75	3689.75	ccp	1.50
2 6407/1-3	6407/1-3	nor		saga_sept92	3696.30	3696.30	ccp	1.48
3 6407/1-3	6407/1-3	nor		saga_sept92	3700.65	3700.65	ccp	1.44

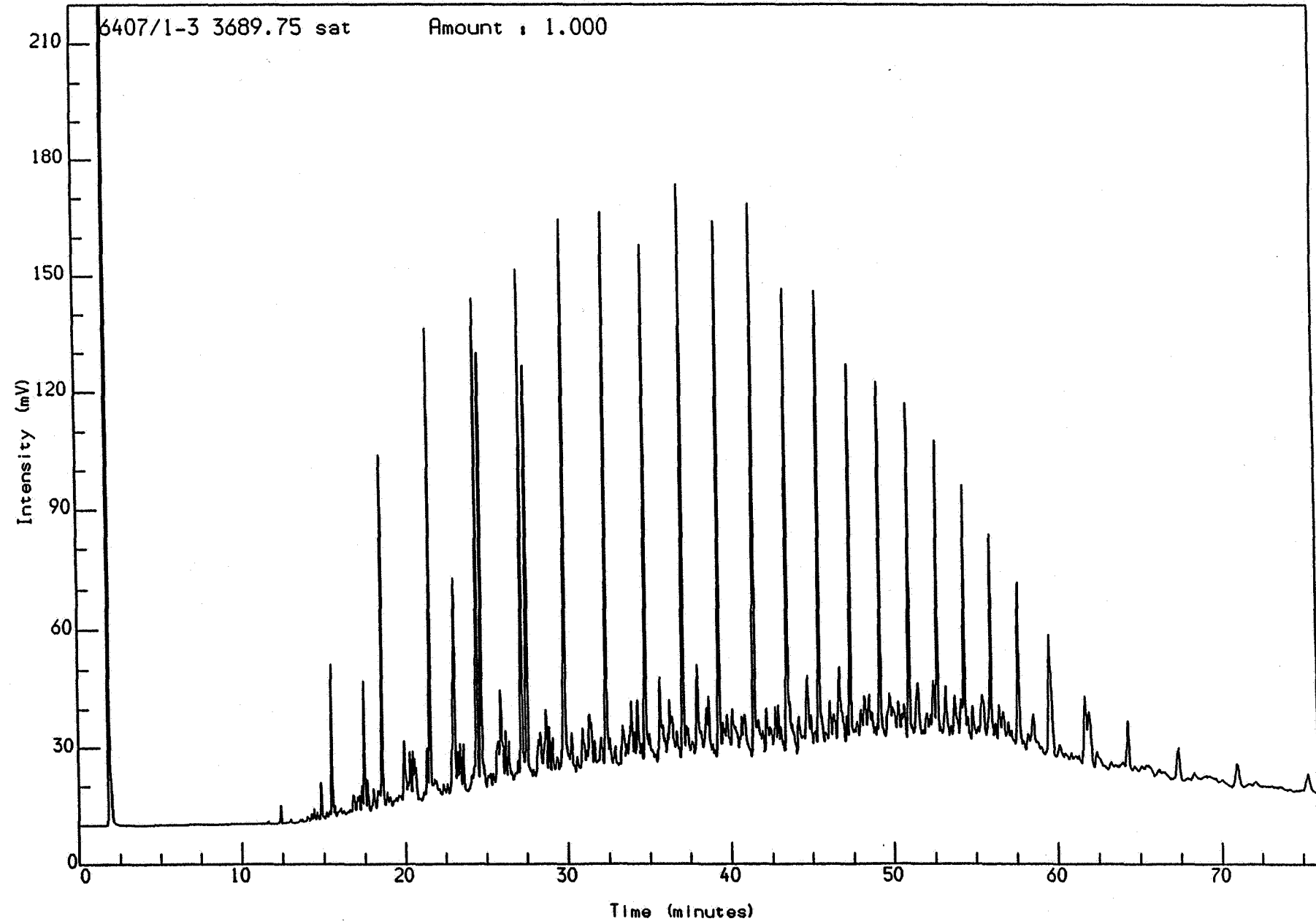
0 well	9 Z/C	10 Z/Z+E	11 X/E	12 X/X+D	13 E/E+F	14 22S	15 a/a+j	16 20S
1 6407/1-3	0.207547	0.073579	0.137184	0.791667	0.908197	58.163265	0.812865	0.558621
2 6407/1-3	0.205882	0.070707	0.137681	0.791667	0.913907	59.390863	0.817109	0.561644
3 6407/1-3	0.211538	0.075085	0.140221	0.760000	0.909396	59.162304	0.816024	0.567376

0 well	17 bbS 217	18 %C27 abbs	19 %C28 abbs	20 %C29 abbs
1 6407/1-3	0.561934	35.873016	31.428571	32.698413
2 6407/1-3	0.565476	32.323232	33.333333	34.343434
3 6407/1-3	0.571429	31.965812	32.820513	35.213675

Figure 1.

Analysis Name : [DEFPROJECT] 3 S088,12,1.

Multichrom

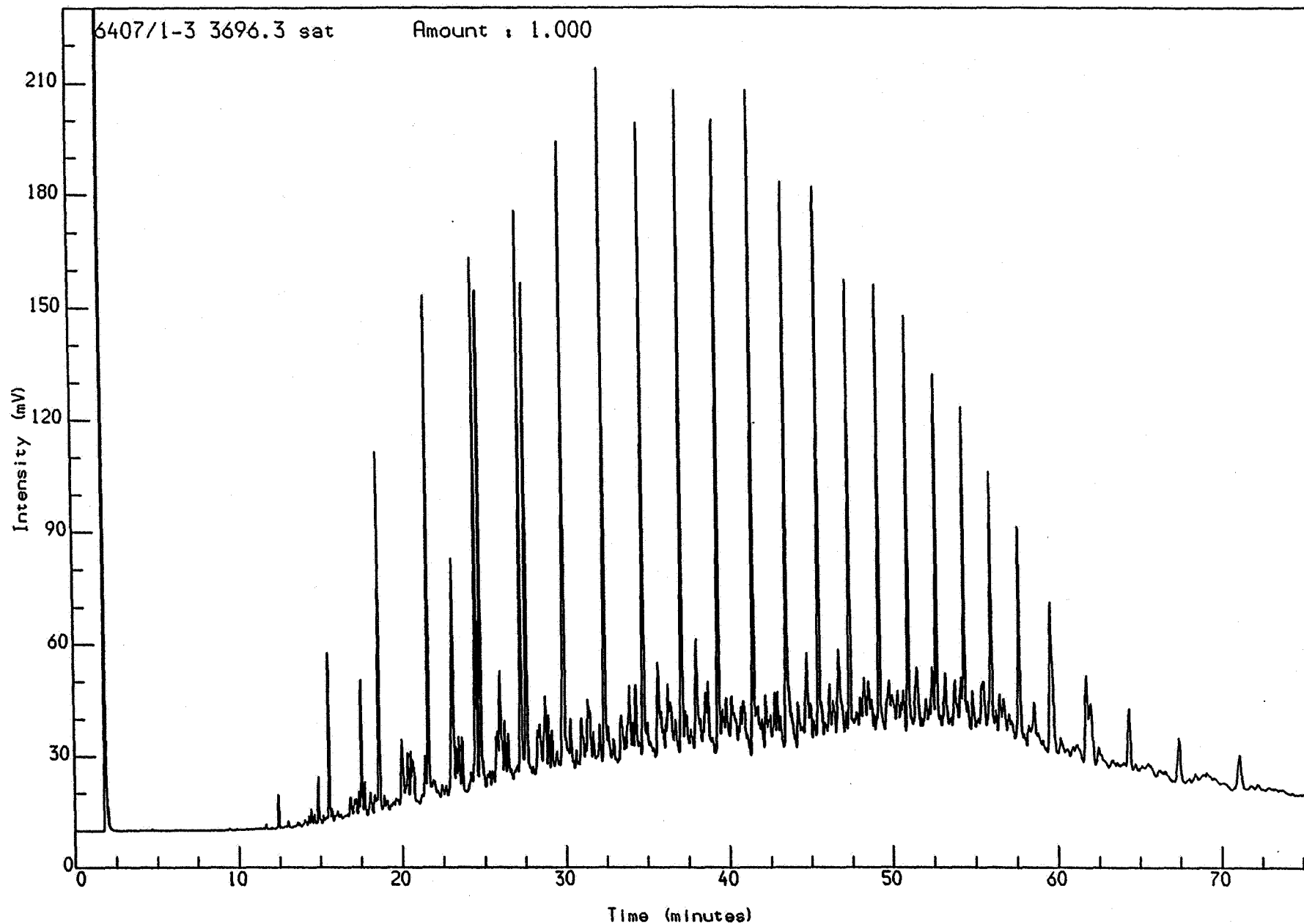


Acquired on 20-AUG-1992 at 01:05

Reported on 20-AUG-1992 at 09:48

Analysis Name : [DEFECT] 3 S088,13,1.

Multichrom

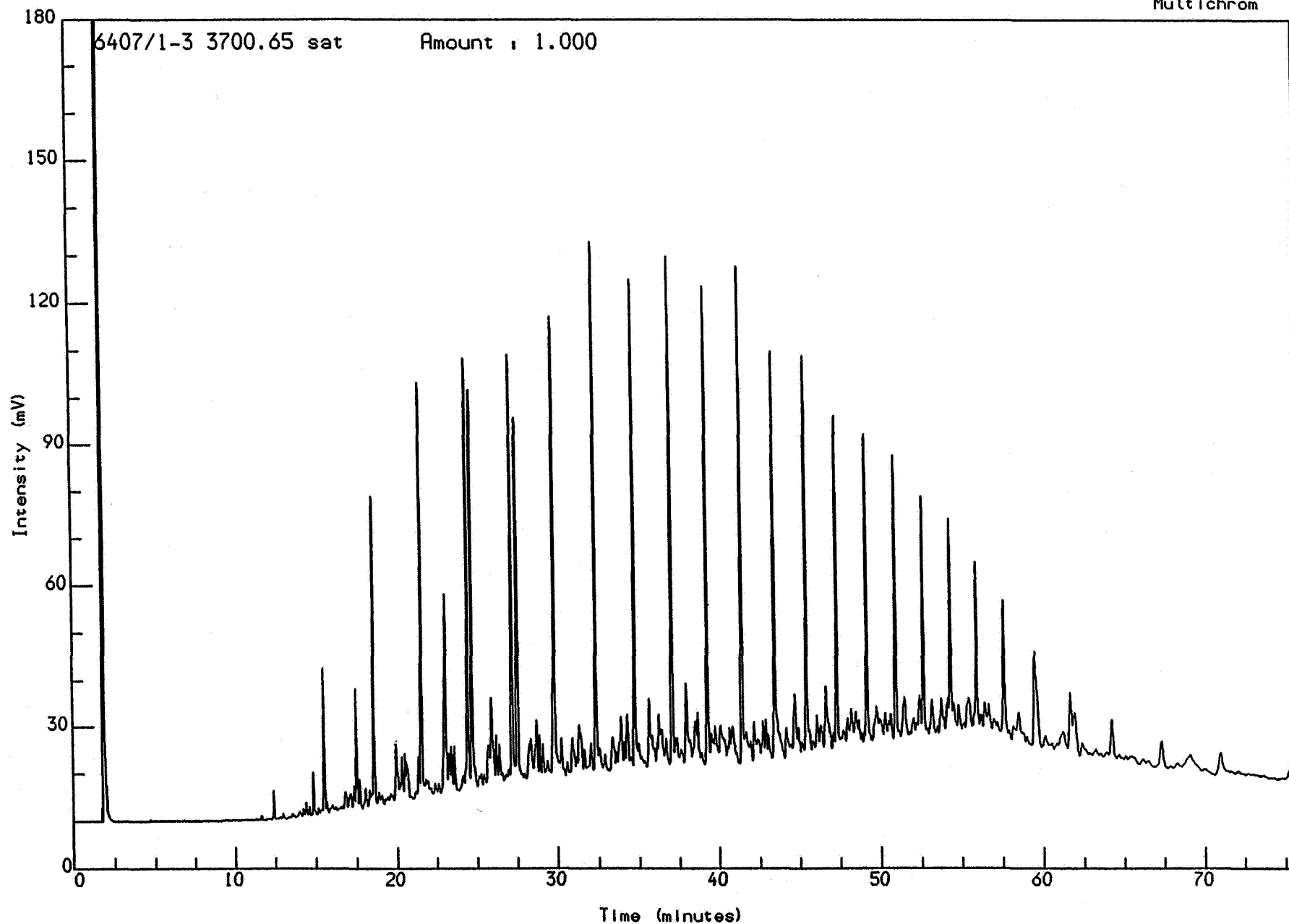


Acquired on 20-AUG-1992 at 08:29

Reported on 20-AUG-1992 at 09:49

Analysis Name : [DEFPROJECT] 3 S088,14,1.

Multichrom



Acquired on 20-AUG-1992 at 09:50

Reported on 24-AUG-1992 at 14:19

Figure 2.

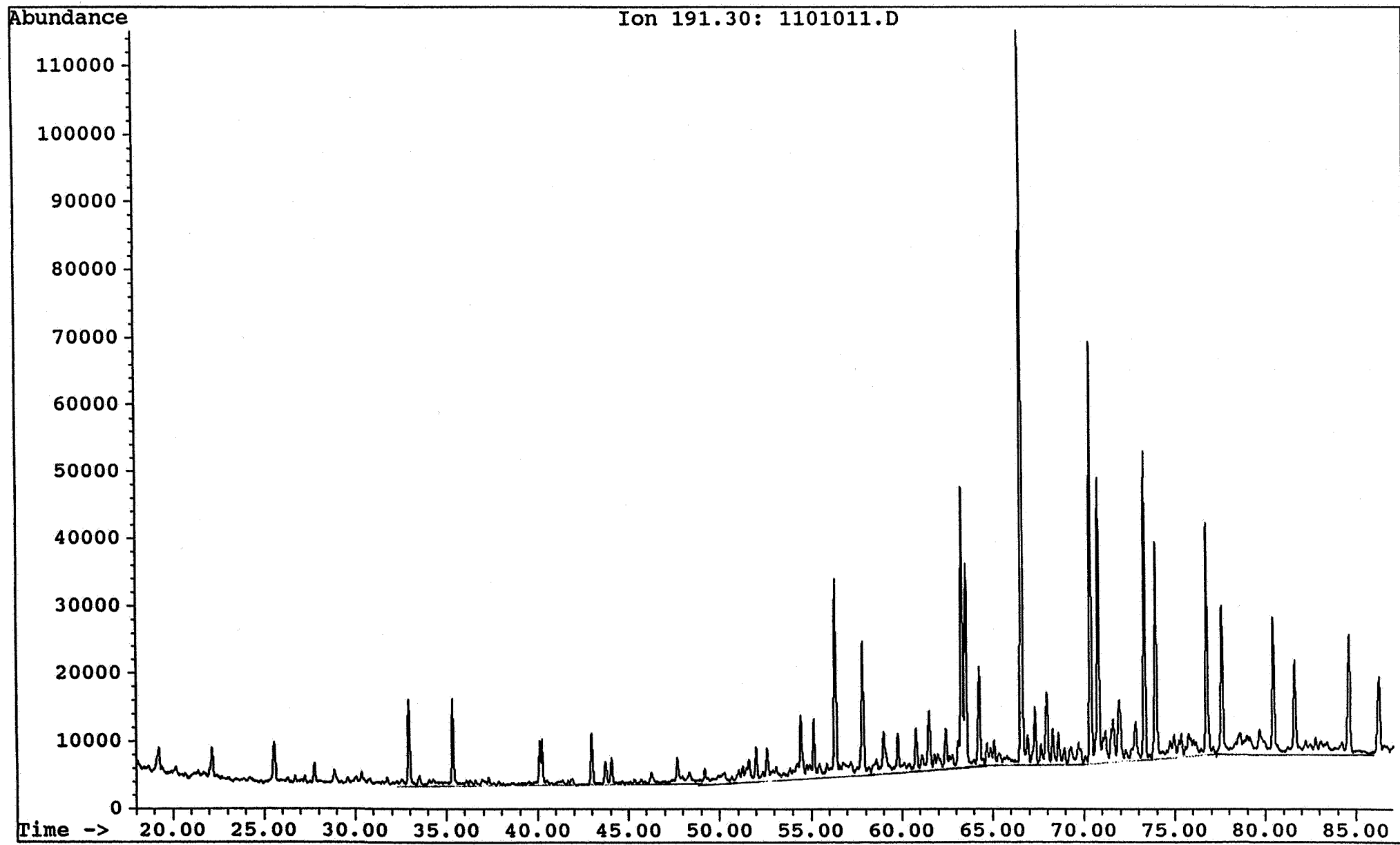
Saga Petroleum a.s.

Date acquired: 1 Sep 92 2:29 am

File: C:\CHEMPC\DATA\HALTEN\RUN8\1101011.D Inst: HP5971A Inj: Split Meth: BMS.M

Sample name:

WELL 6407/1-3 3689.75 sat



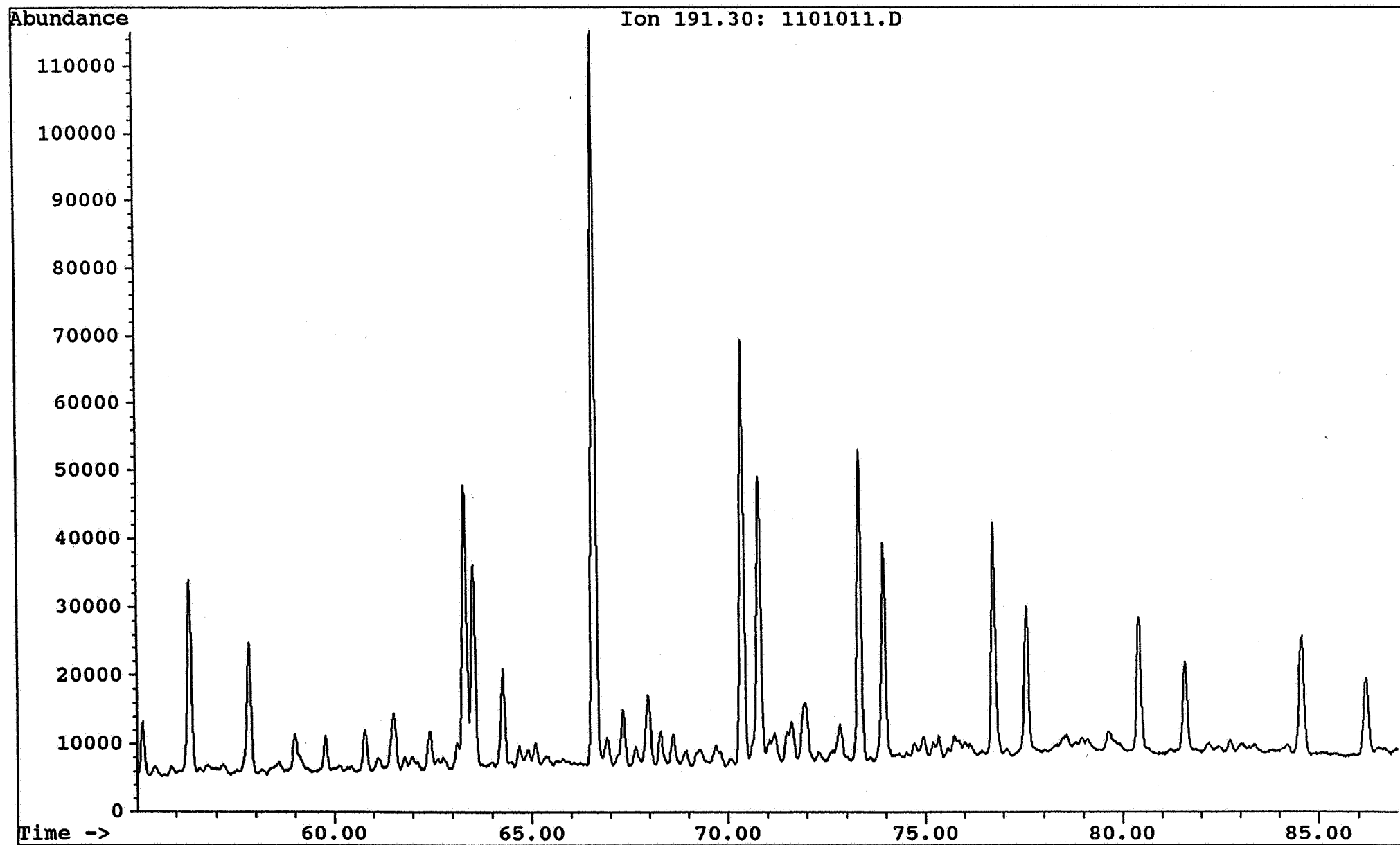
Saga Petroleum a.s.

Date acquired: 1 Sep 92 2:29 am

File: C:\CHEMPC\DATA\HALTEN\RUN8\1101011.D Inst: HP5971A Inj: Split Meth: BMS.M

Sample name:

WELL 6407/1-3 3689.75 sat



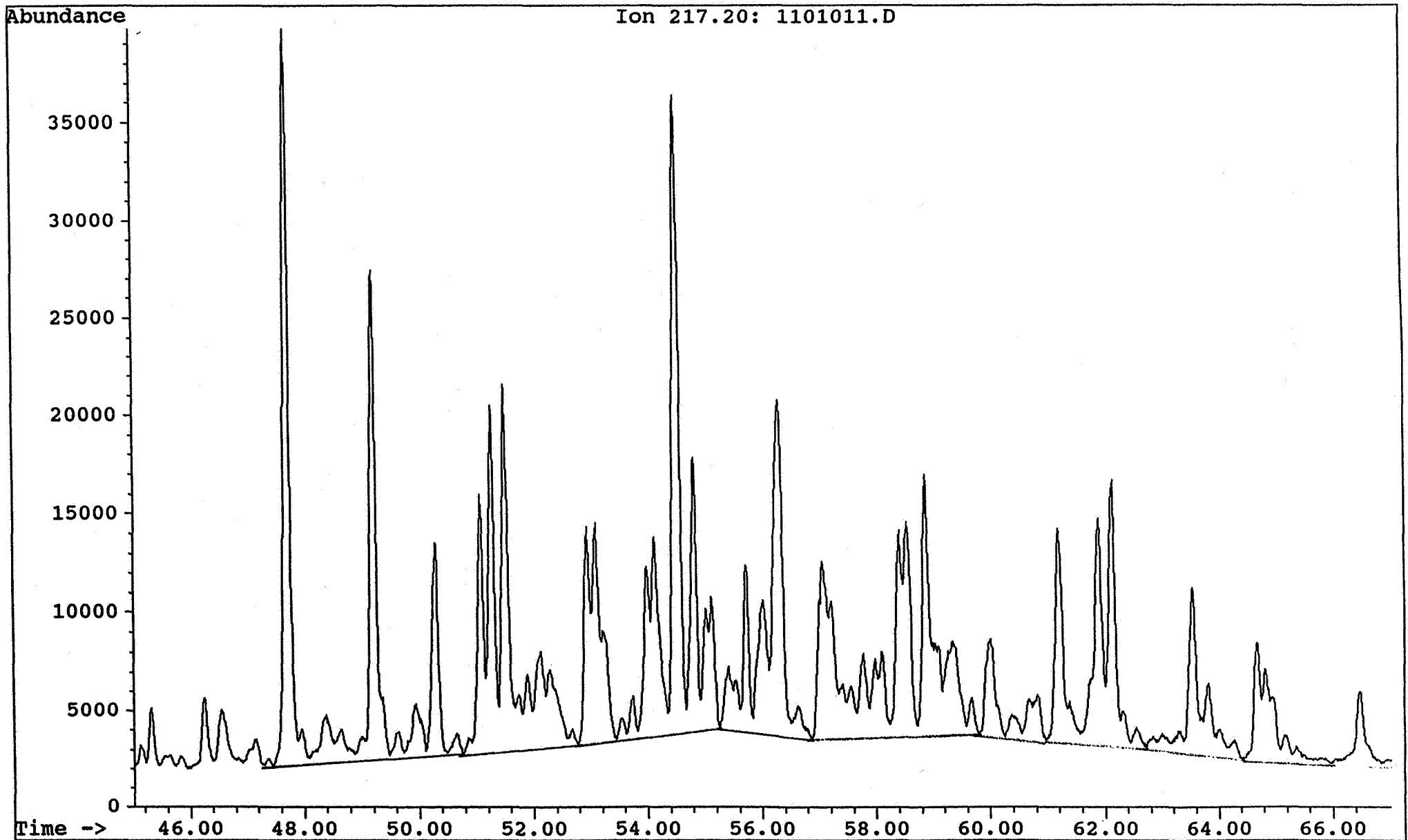
Saga Petroleum a.s.

Date acquired: 1 Sep 92 2:29 am

File: C:\CHEMPC\DATA\HALTEN\RUN8\1101011.D Inst: HP5971A Inj: Split Meth: BMS.M

Sample name:

WELL 6407/1-3 3689.75 sat



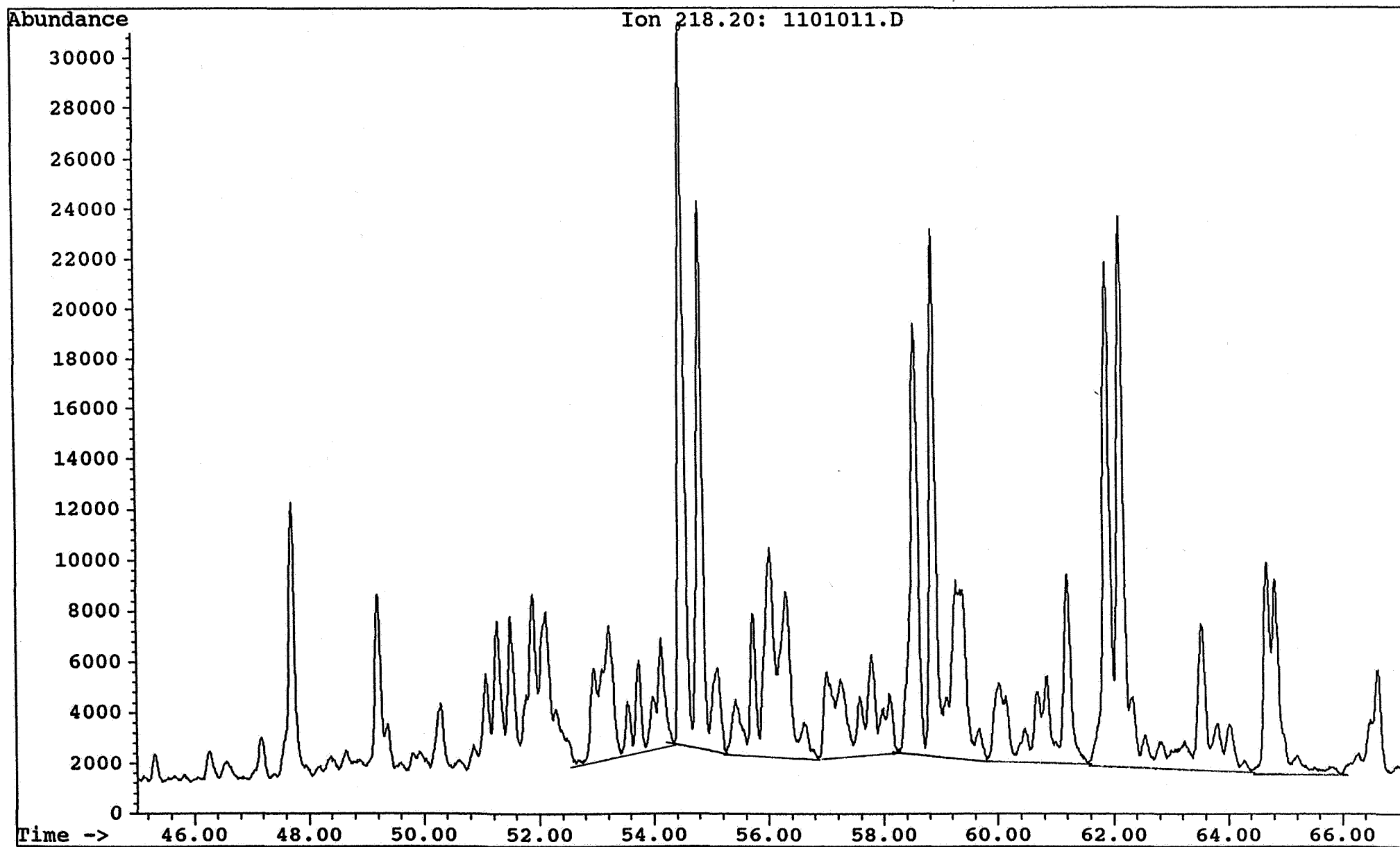
Saga Petroleum a.s.

Date acquired: 1 Sep 92 2:29 am

File: C:\CHEMPC\DATA\HALTEN\RUN8\1101011.D Inst: HP5971A Inj: Split Meth: BMS.M

Sample name:

WELL 6407/1-3 3689.75 sat



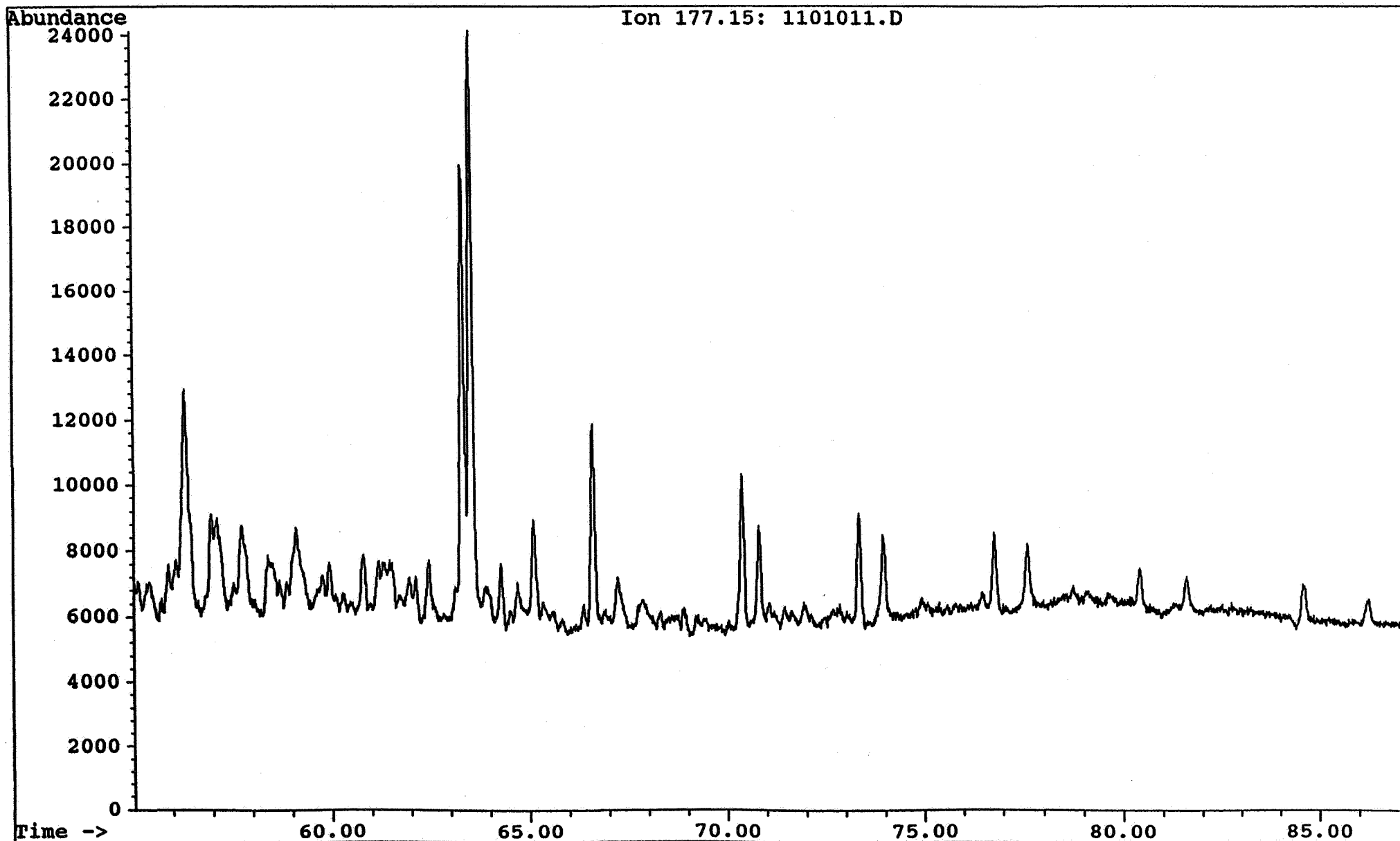
Saga Petroleum a.s.

Date acquired: 1 Sep 92 2:29 am

File: C:\CHEMPC\DATA\HALTEN\RUN8\1101011.D Inst: HP5971A Inj: Split Meth: BMS.M

Sample name:

WELL 6407/1-3 3689.75 sat



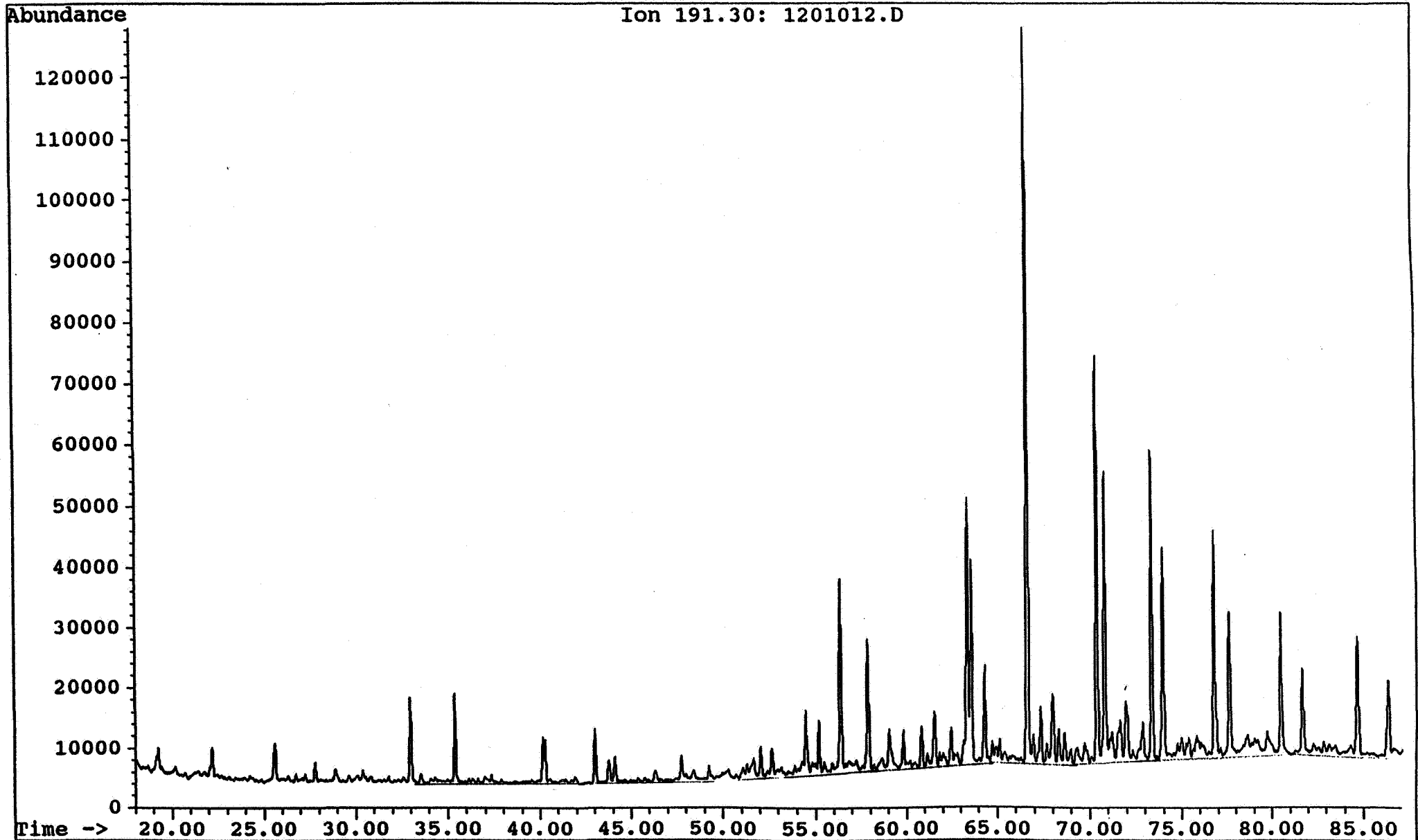
Saga Petroleum a.s.

Date acquired: 1 Sep 92 4:12 am

File: C:\CHEMPC\DATA\HALTEN\RUN8\1201012.D Inst: HP5971A Inj: Split Meth: BMS.M

Sample name:

WELL 6407/1-3 3696.30 sat



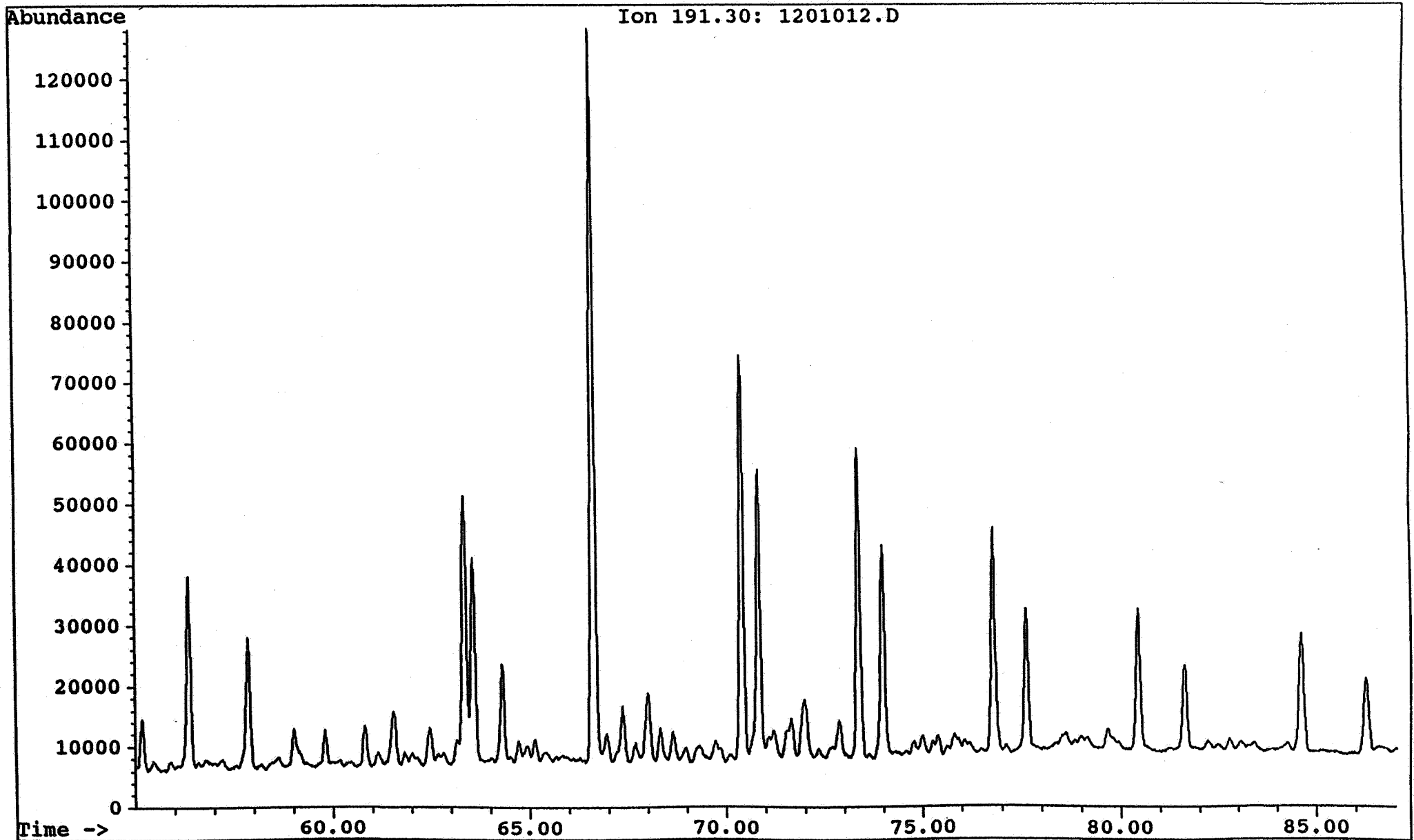
Saga Petroleum a.s.

Date acquired: 1 Sep 92 4:12 am

File: C:\CHEMPC\DATA\HALTEN\RUN8\1201012.D Inst: HP5971A Inj: Split Meth: BMS.M

Sample name:

WELL 6407/1-3 3696.30 sat



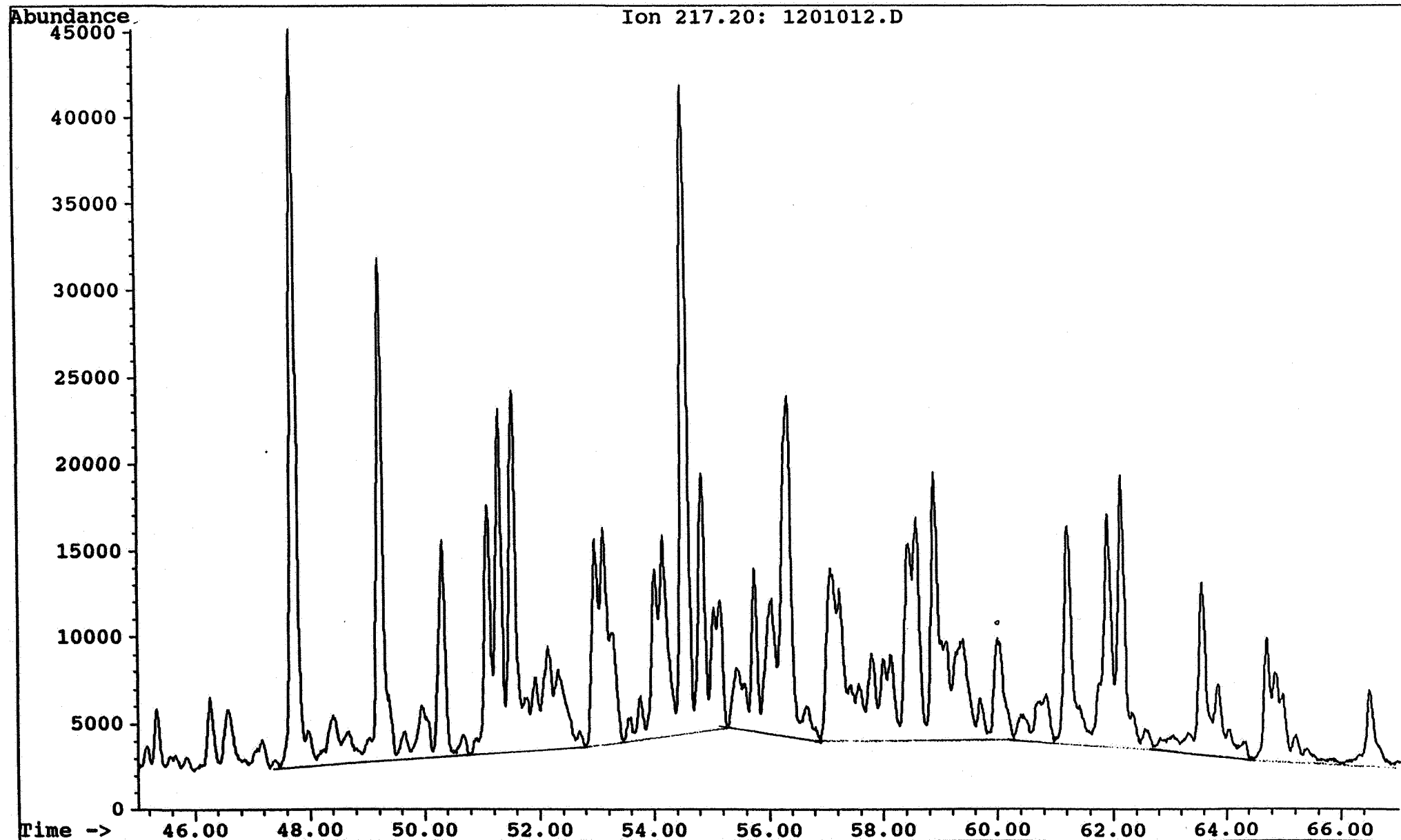
Saga Petroleum a.s.

Date acquired: 1 Sep 92 4:12 am

File: C:\CHEMPC\DATA\HALTEN\RUN8\1201012.D Inst: HP5971A Inj: Split Meth: BMS.M

Sample name:

WELL 6407/1-3 3696.30 sat



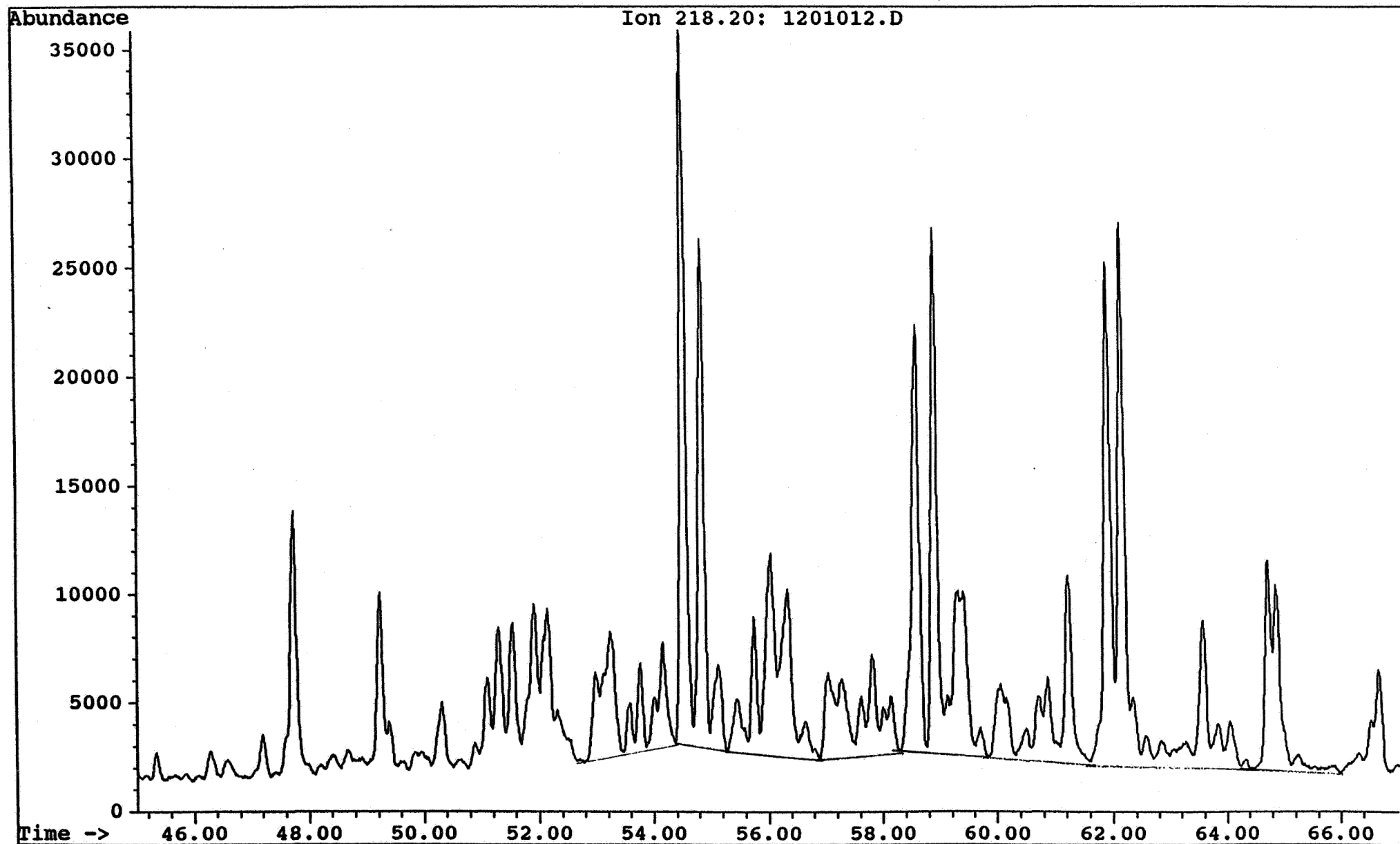
Saga Petroleum a.s.

Date acquired: 1 Sep 92 4:12 am

File: C:\CHEMPC\DATA\HALTEN\RUN8\1201012.D Inst: HP5971A Inj: Split Meth: BMS.M

Sample name:

WELL 6407/1-3 3696.30 sat

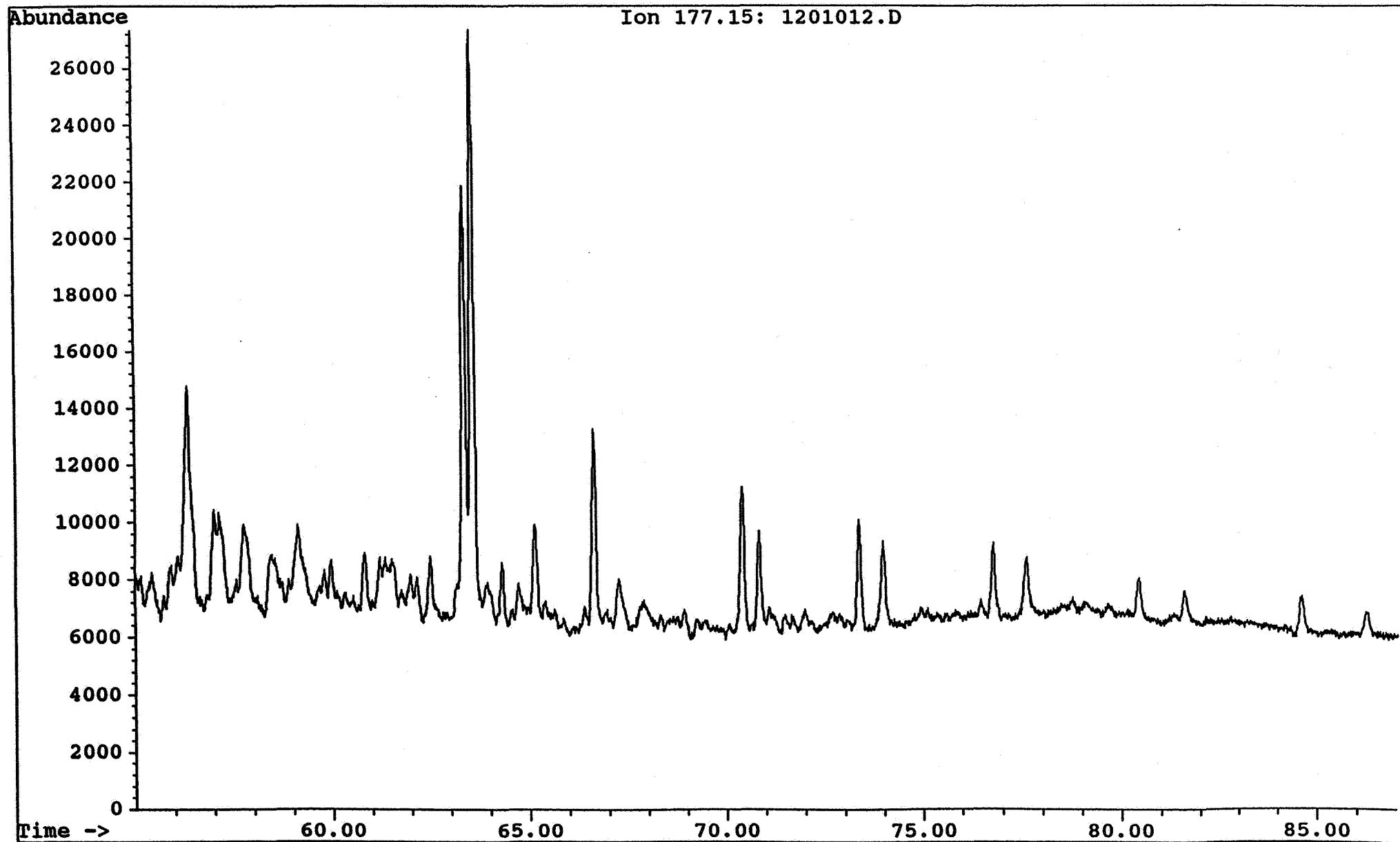


Saga Petroleum a.s.

Date acquired: 1 Sep 92 4:12 am

File: C:\CHEMPC\DATA\HALTEN\RUN8\1201012.D Inst: HP5971A Inj: Split Meth: BMS.M

Sample name: WELL 6407/1-3 3696.30 sat

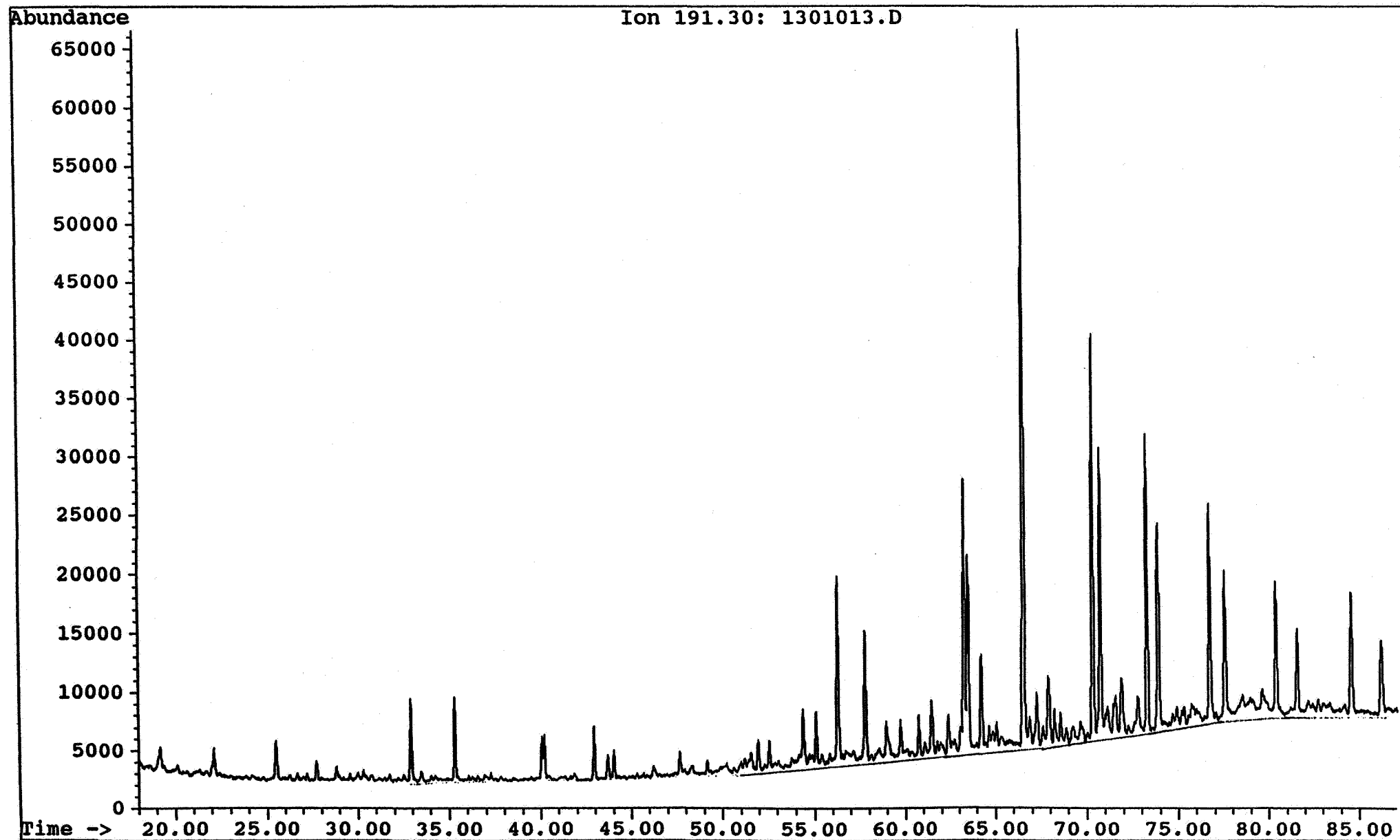


Saga Petroleum a.s.

Date acquired: 1 Sep 92 5:56 am

File: C:\CHEMPC\DATA\HALTEN\RUN8\1301013.D Inst: HP5971A Inj: Split Meth: BMS.M

Sample name: WELL 6407/1-3 3700.65 sat



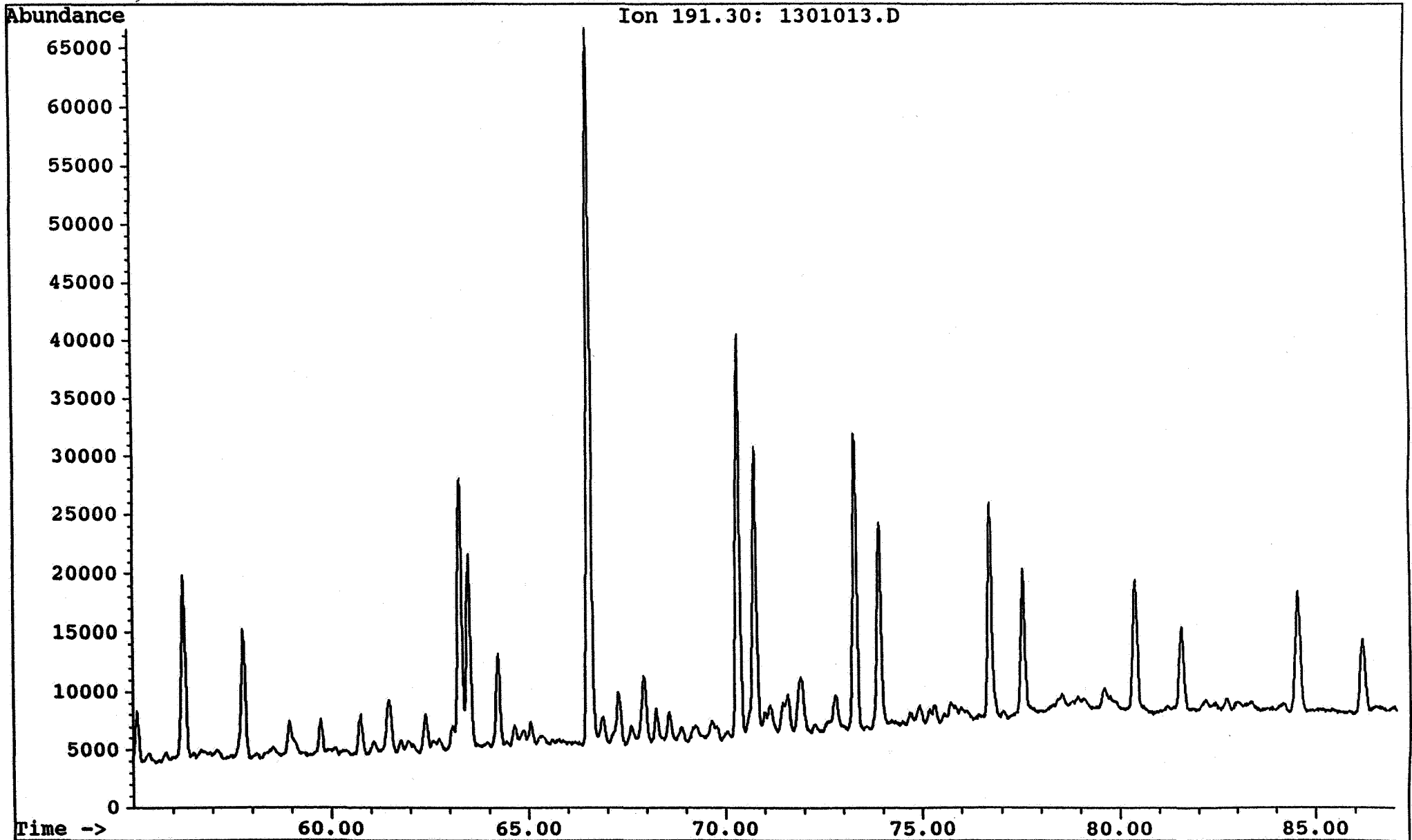
Saga Petroleum a.s.

Date acquired: 1 Sep 92 5:56 am

File: C:\CHEMPC\DATA\HALTEN\RUN8\1301013.D Inst: HP5971A Inj: Split Meth: BMS.M

Sample name:

WELL 6407/1-3 3700.65 sat



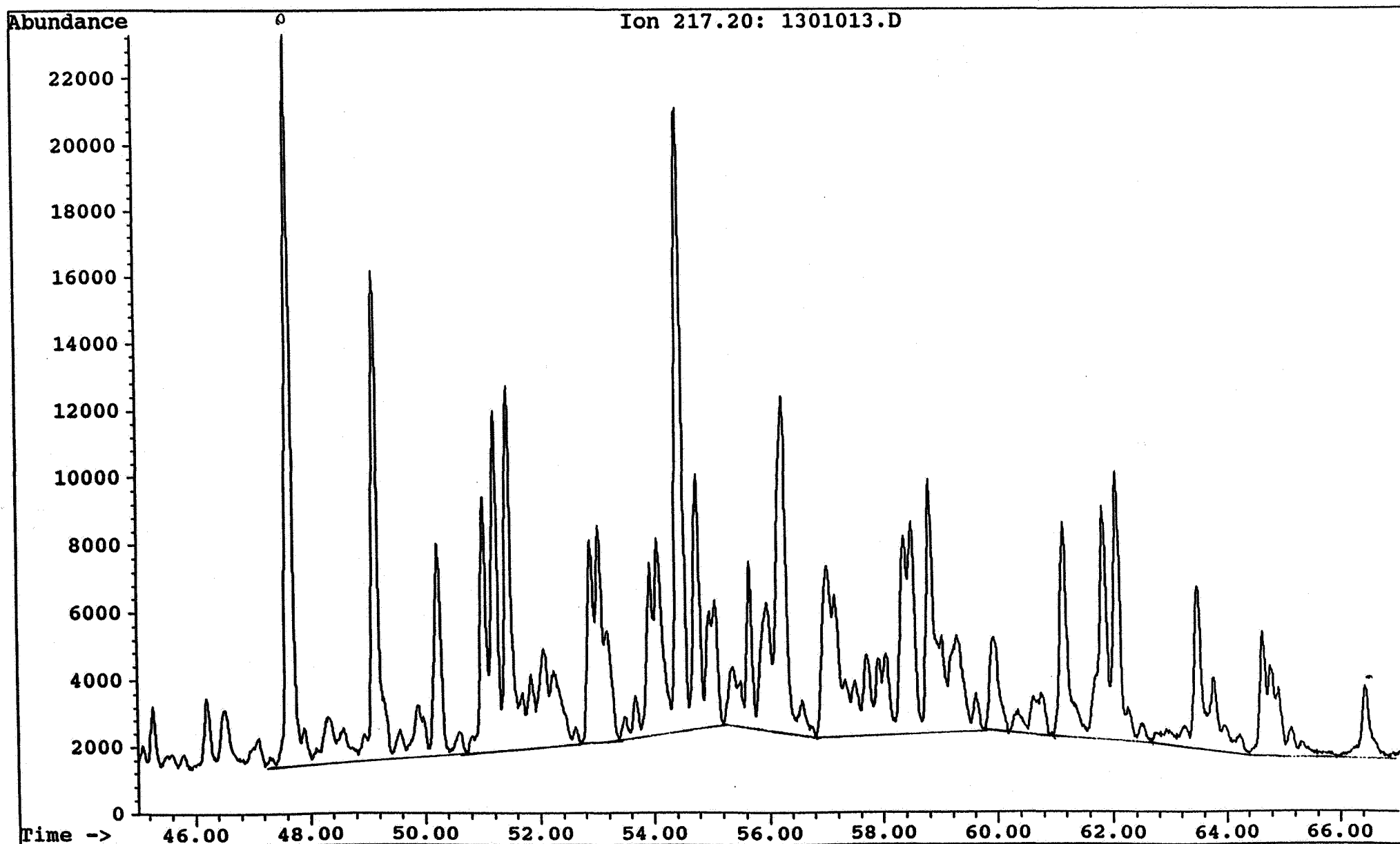
Saga Petroleum a.s.

Date acquired: 1 Sep 92 5:56 am

File: C:\CHEMPC\DATA\HALTEN\RUN8\1301013.D Inst: HP5971A Inj: Split Meth: BMS.M

Sample name:

WELL 6407/1-3 3700.65 sat



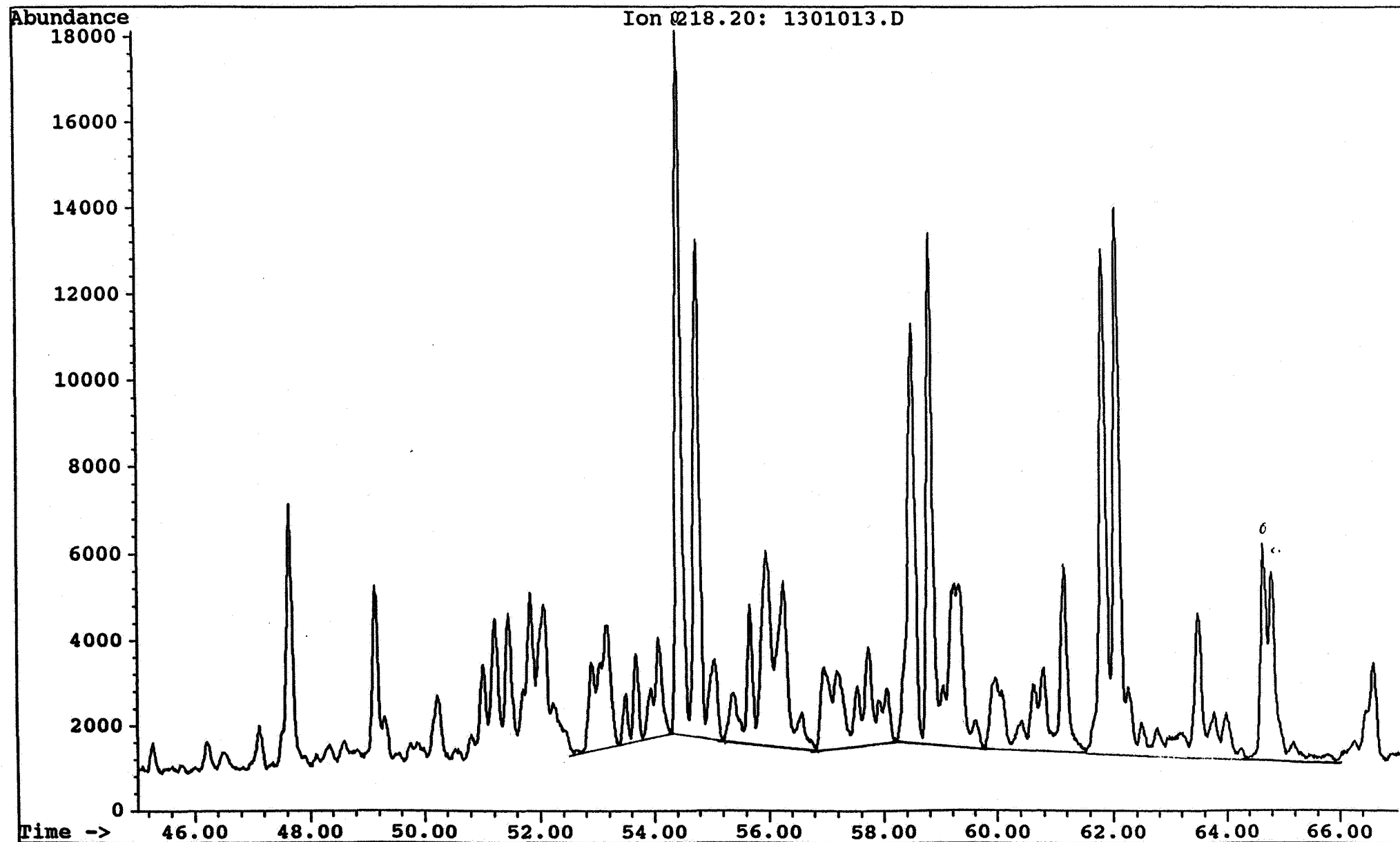
Saga Petroleum a.s.

Date acquired: 1 Sep 92 5:56 am

File: C:\CHEMPC\DATA\HALTEN\RUN8\1301013.D Inst: HP5971A Inj: Split Meth: BMS.M

Sample name:

WELL 6407/1-3 3700.65 sat



Saga Petroleum a.s.

Date acquired: 1 Sep 92 5:56 am

File: C:\CHEMPC\DATA\HALTEN\RUN8\1301013.D Inst: HP5971A Inj: Split Meth: BMS.M

Sample name:

WELL 6407/1-3 3700.65 sat

