



Document Id. : R-EUG-0187
 Reference Code :
 Date : AUGUST 1993
 Revision Number :

Title

GEOCHEMICAL DATA REPORT FOR WELL 31/4-8

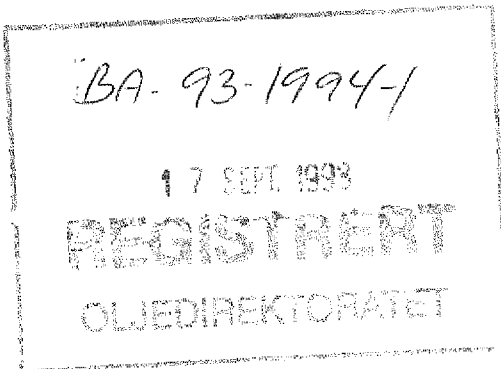
Authors(s)

IDAR HORSTAD

Abstract

Three samples from the cored interval in well 31/4-8 have been analysed by Iatroscan (TLC-FID) and the saturated hydrocarbon fractions from all three samples were analysed by GC-FID and GC/MS.

NOT INCLUDED IN WELL TRADE.



Key Words

31/4-8, geochemistry, GC-FID, GC/MS, Brage Field

Classification: Free Saga and partners Internal Confidential Strictly confidential

Org. Unit	EUG				
Reviewed	N. Mills				
Accepted					
Approved	T. Haaland				

Hovedkontor/Head Office Oslo:

Adresse/Address
Kjerboveien 18
Postboks 480
N-1301 SANDVIKA

Telefon/Telephone
Nasjonalt 67 12 66 00
Intern. +47 87 12 66 00

Teleks/Telex
78862 Saga n
Telefax
Nasjonalt 67 126666
Intern. +47 67 126666

Driftsdivisjon/Operations Division Stavanger:

Adresse/Address
Godesetdalen B
Postboks 117
N-4003 FORUS

Telefon/Telephone
Nasjonalt 04 57 40 00
Intern. +47 4 57 40 00

Teleks/Telex
33244 sagap n
Telefax
Nasjonalt 04 570261
Intern. +47 4 570261

1 Objectives

The objective of this study was to characterise the extractable hydrocarbons in three core samples from well 31/4-8 from the Brage Field, Norway.

2 General well information

The well was drilled by Norsk Hydro as operator of licence 055 from 21/3-86 to 11/5-86 and reached a total depth of 2570 mRKB. The KB of the rig was 25 metres and the water depth was 124 metres.

3 Samples and analytical scheme

Three samples were picked from the cored interval in the well on the 16th of September 1992 at NPD's store in Stavanger. The three samples (see table 1) were analysed by Iatroscan (TLC-FID), and the saturated hydrocarbon fractions from all three samples (2348.0, 2365.0 and 2389.0 mRKB) were analysed by GC-FID and GC/MS.

4 Vitrinite reflectance

No samples were analysed.

5 TOC and Rock Eval

No samples were analysed.

6 Iatroscan (TLC-FID)

Three samples were analysed, and the results are tabulated in Table 1.

7 GC-FID

The saturated hydrocarbon fractions from three samples (2348.0, 2365.0 and 2389.0 mRKB) were analysed by GC-FID. All the samples have a uniform n-alkane distribution without any signs of biological degradation.

Since the evaporative loss has affected the relative concentration of individual compounds, no ratios were calculated.

The GC-FID chromatograms are shown in figure 1.

8 GC/MS

The saturated hydrocarbon fractions from three samples were analysed by GC/MS and the mass chromatograms for m/z 191, 177, 217 and 218 are shown in figure 2.

Selected biological marker parameters are given in table 2.

9 Stable carbon isotopes

No samples were analysed.

Tab. 1

0 WELL NAME	1 NATIONALITY	2 LABORATORY	3 U.DEPTH	4 L.DEPTH	5 SAMPLE TYPE	6 LITHOLOGY	7 EOM mg/g
1 31/4-8	NOR	SAGA	2348.00	2348.00	CCP	SST	10.19
2 31/4-8	NOR	SAGA	2365.00	2365.00	CCP	SST	7.84
3 31/4-8	NOR	SAGA	2389.00	2389.00	CCP	SST	8.82

0 WELL NAME	8 SAT (mg/g)	9 ARO (mg/g)	10 POL (mg/g)	11 SAT %	12 ARO %	13 POLARS %	14 SAT ARO	15 METHODS
1 31/4-8	6.64	1.45	2.10	65.161923	14.229637	20.608440	4.579310	GC, GC/MS
2 31/4-8	5.24	1.41	1.19	66.836735	17.984694	15.178571	3.716312	GC, GC/MS
3 31/4-8	5.62	1.28	1.92	63.718821	14.512472	21.768707	4.390625	GC, GC/MS

Tab. 2

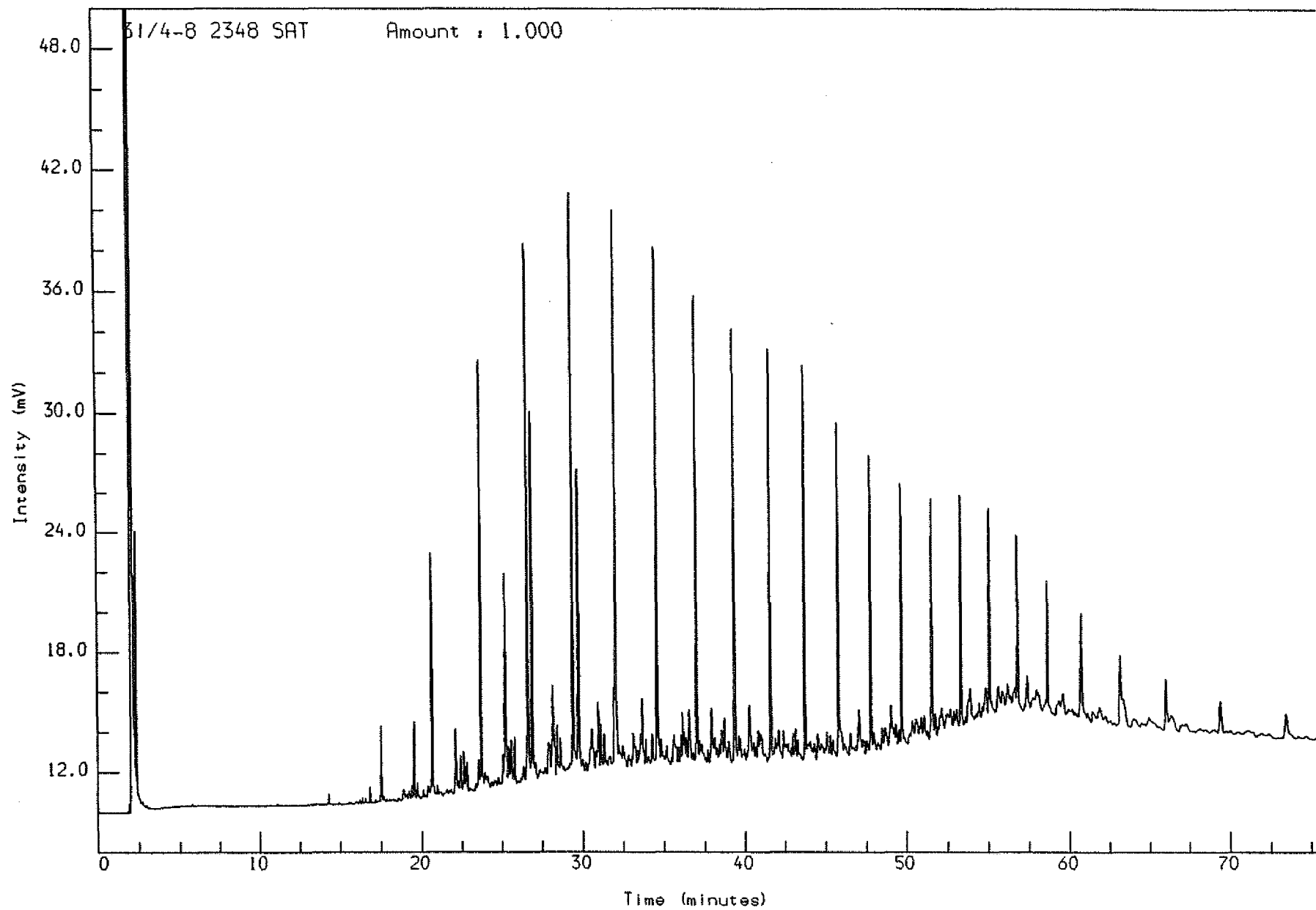
0 WELL NAME	1 CONS.	2 UPPER DEPTH	3 DEPTH	4 LITH	5 SAMPLE TYPE	6 Q/E	7 Ts/Tm	8 Z/C	9 ab/ab+ba
1 31/4-8	SAGA	2348.00	2348.00	SST	CCP	0.21	1.27	0.35	0.90
2 31/4-8	SAGA	2365.00	2365.00	SST	CCP	0.24	1.30	0.35	0.91
3 31/4-8	SAGA	2389.00	2389.00	SST	CCP	0.14	1.19	0.38	0.90

0 WELL NAME	10 %22S	11 %20S	12 %bb	13 a/a+j	14 C27st	15 C28st	16 C29st
1 31/4-8	0.59	0.56	0.59	0.79	34.17	31.99	33.84
2 31/4-8	0.58	0.55	0.60	0.81	35.58	31.09	33.33
3 31/4-8	0.60	0.53	0.57	0.73	31.82	32.73	35.45

Fig. 1

Analysis Name : [DEFPROJECT] 3 S102,12,1.

Multichrom

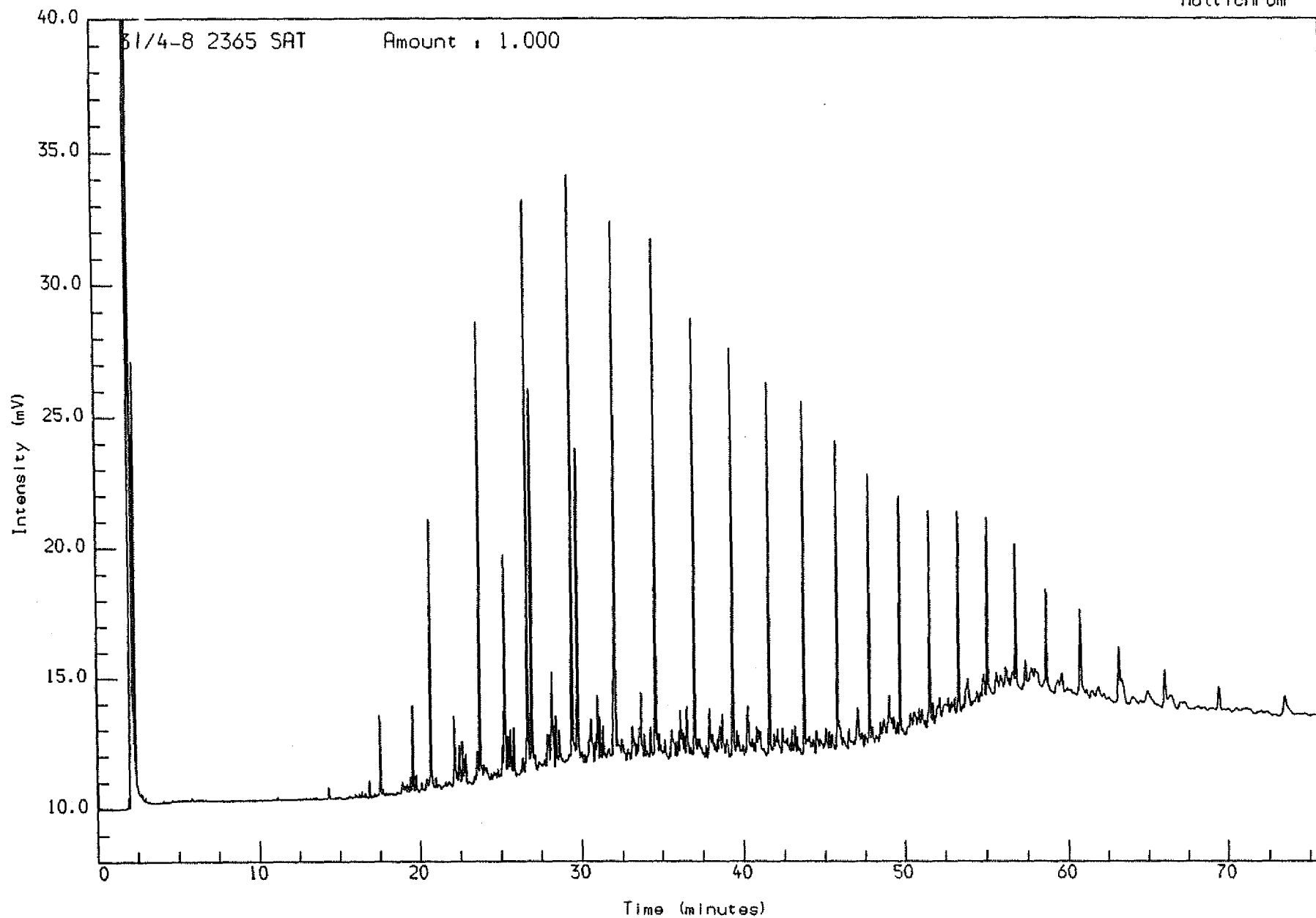


Acquired on 1-OCT-1992 at 01:32

Reported on 6-OCT-1992 at 09:14

Analysis Name : [DEFPROJECT] 3 S102,13,1.

Multichrom

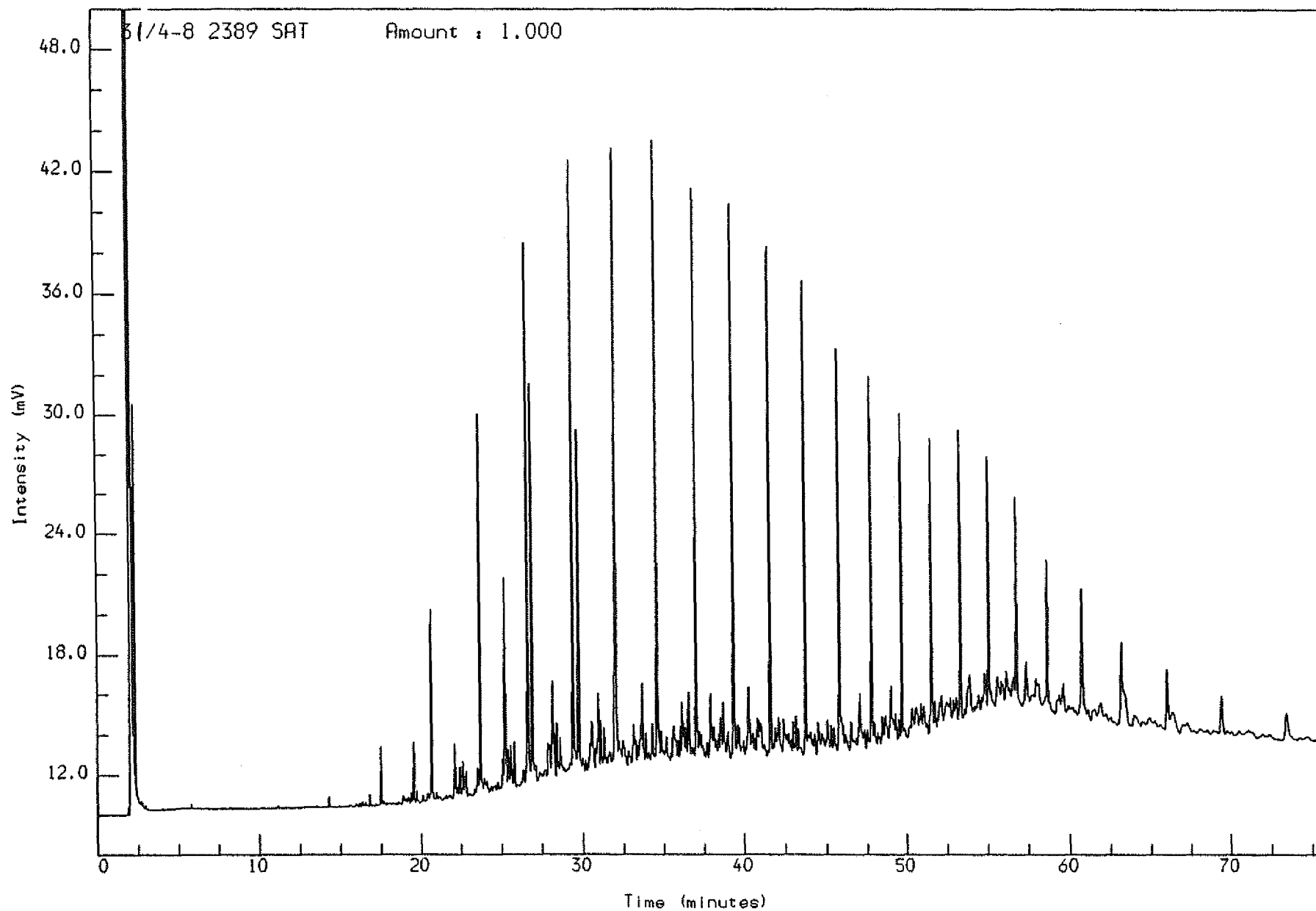


Acquired on 1-OCT-1992 at 02:53

Reported on 6-OCT-1992 at 09:14

Analysis Name : [DEFPROJECT] 3 S102,14,1.

Multichrom



Acquired on 1-OCT-1992 at 04:14

Reported on 6-OCT-1992 at 09:15

Fig. 2

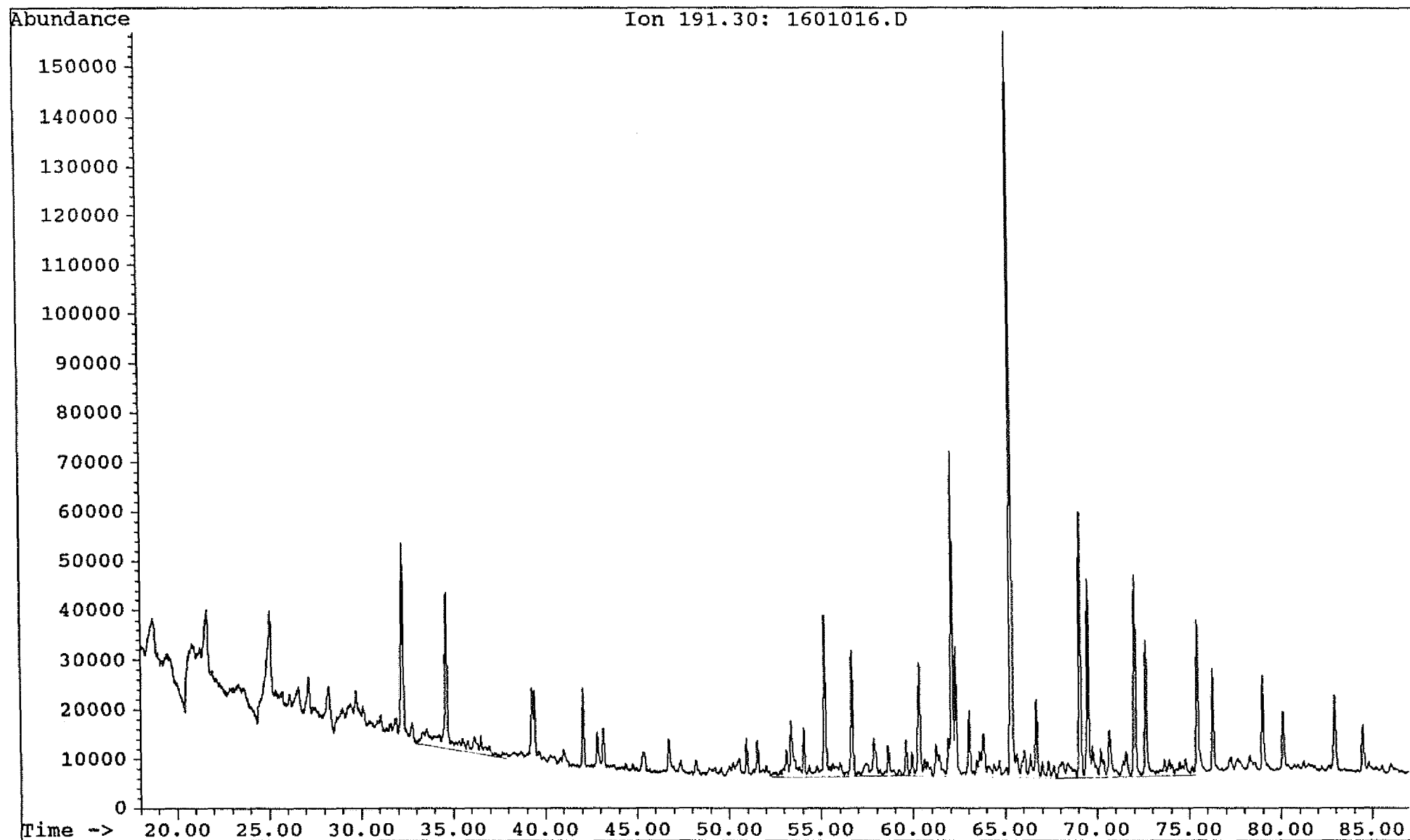
Saga Petroleum a.s.

Date acquired: 6 Oct 92 3:49 pm

File: C:\CHEMPC\DATA\30_31\1601016.D Inst: HP5971A Inj: Split Meth: BMS.M

Sample name:

WELL 31/4-8 2348 sat

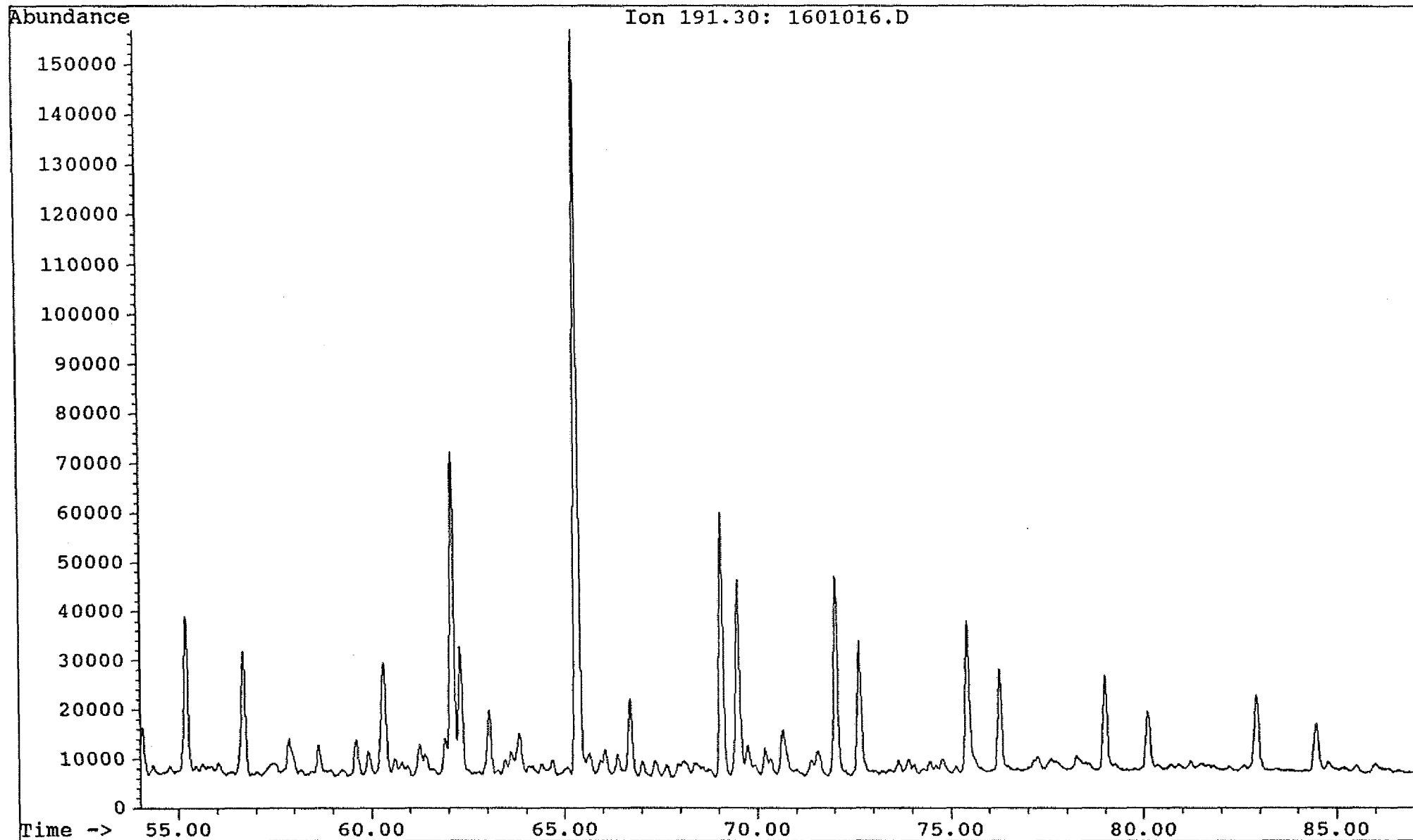


Saga Petroleum a.s.

Date acquired: 6 Oct 92 3:49 pm

File: C:\CHEMPC\DATA\30_31\1601016.D Inst: HP5971A Inj: Split Meth: BMS.M

Sample name: WELL 31/4-8 2348 sat

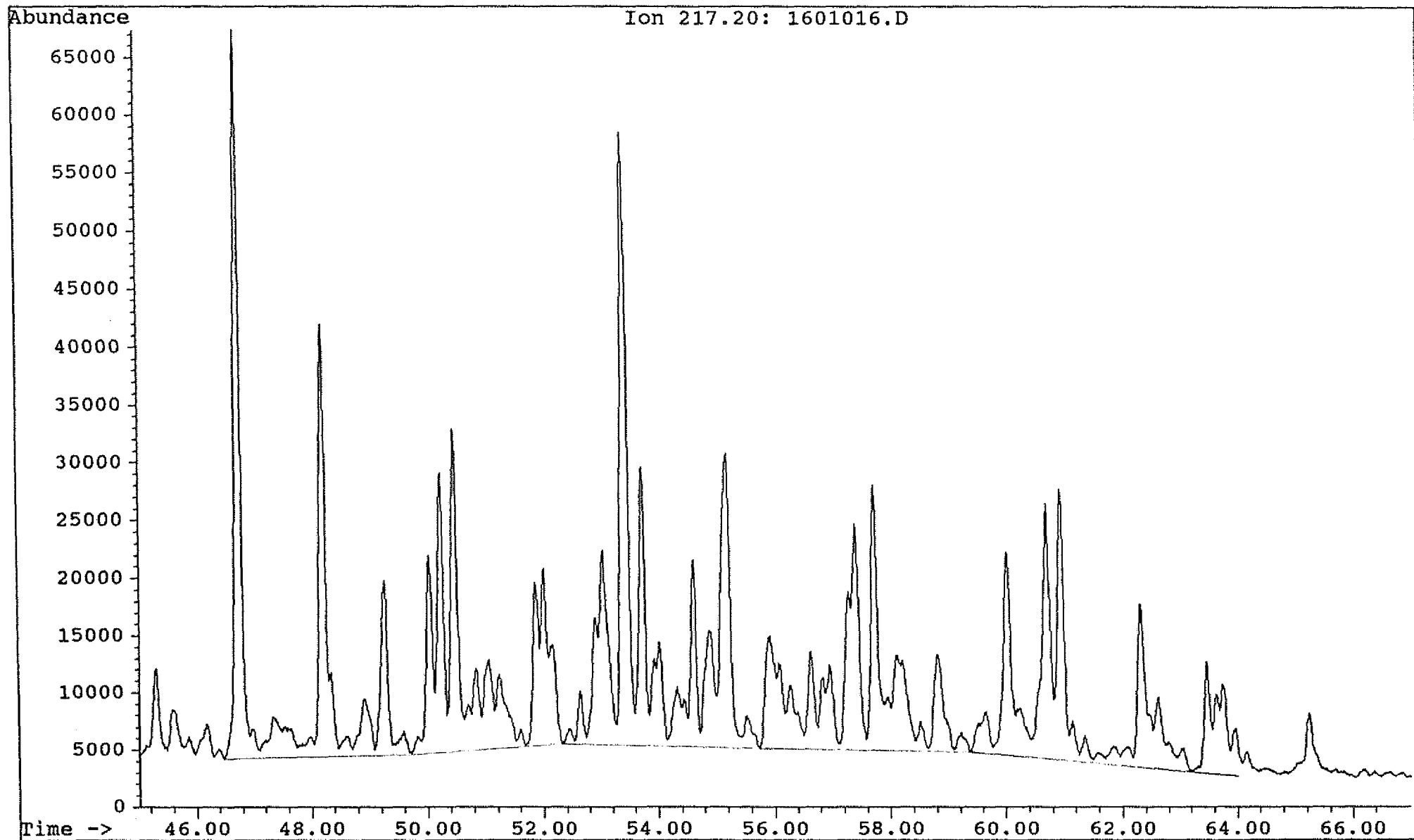


Saga Petroleum a.s.

Date acquired: 6 Oct 92 3:49 pm

File: C:\CHEMPC\DATA\30_31\1601016.D Inst: HP5971A Inj: Split Meth: BMS.M

Sample name: WELL 31/4-8 2348 sat



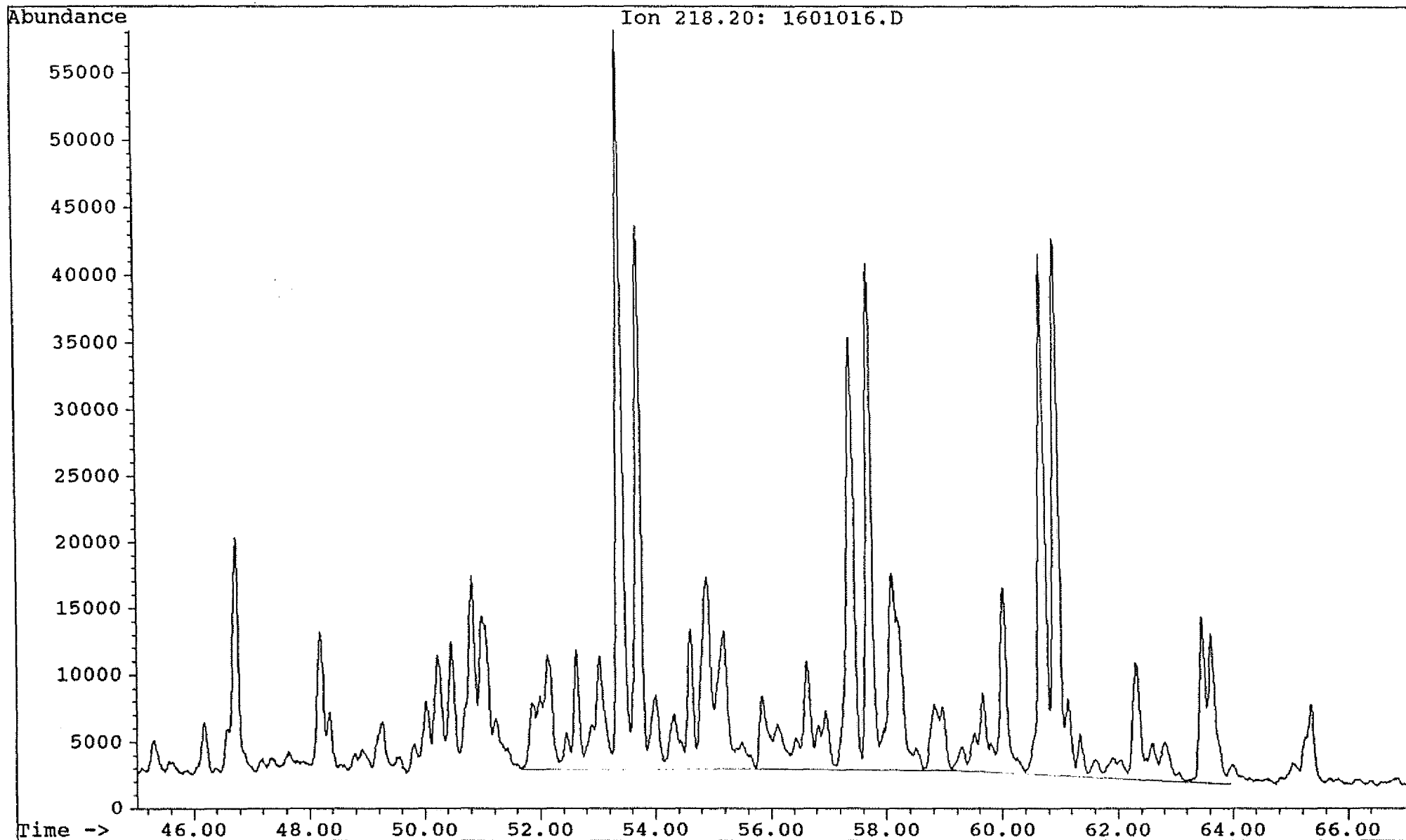
Saga Petroleum a.s.

Date acquired: 6 Oct 92 3:49 pm

File: C:\CHEMPC\DATA\30_31\1601016.D Inst: HP5971A Inj: Split Meth: BMS.M

Sample name:

WELL 31/4-8 2348 sat

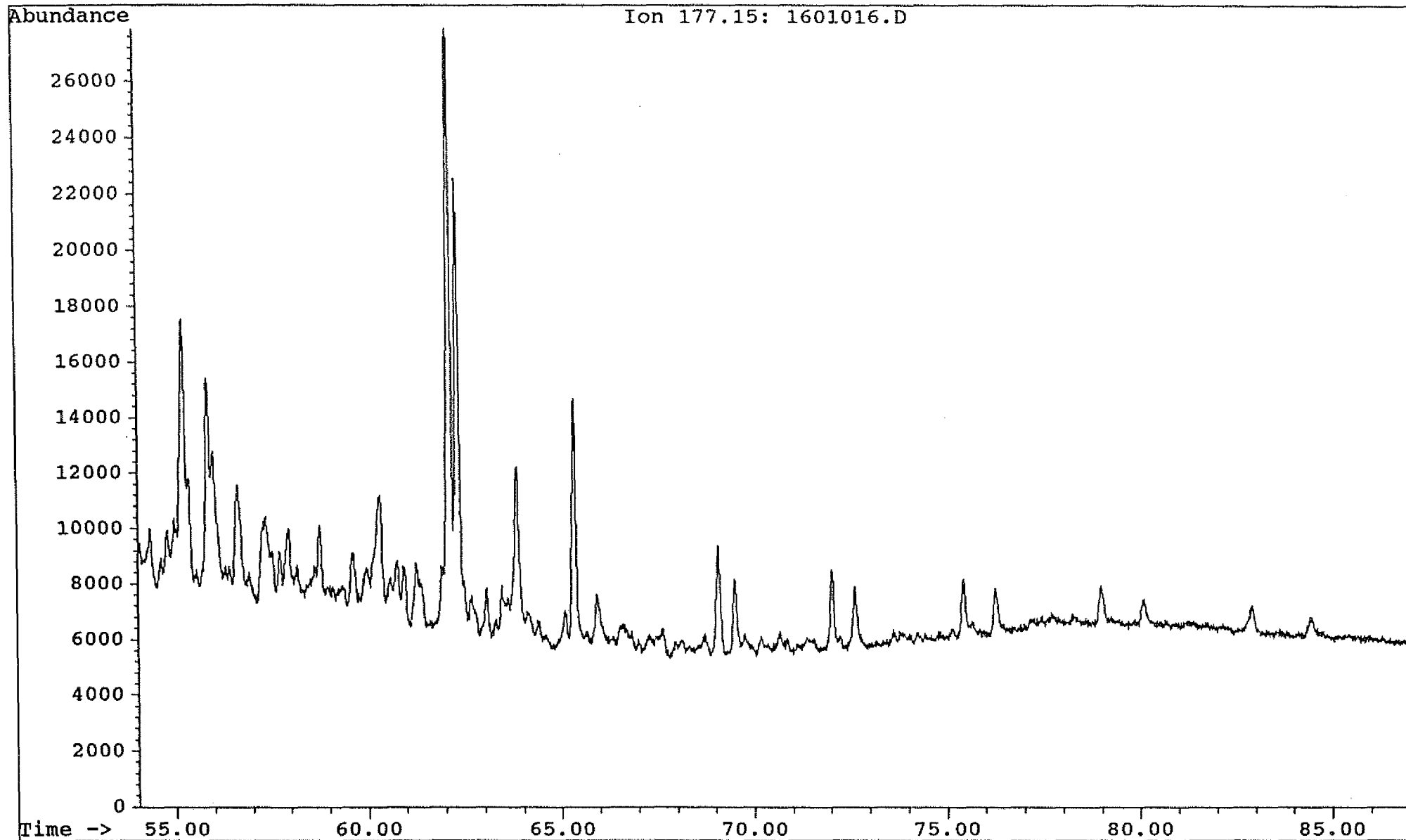


Saga Petroleum a.s.

Date acquired: 6 Oct 92 3:49 pm

File: C:\CHEMPC\DATA\30_31\1601016.D Inst: HP5971A Inj: Split Meth: BMS.M

Sample name: WELL 31/4-8 2348 sat



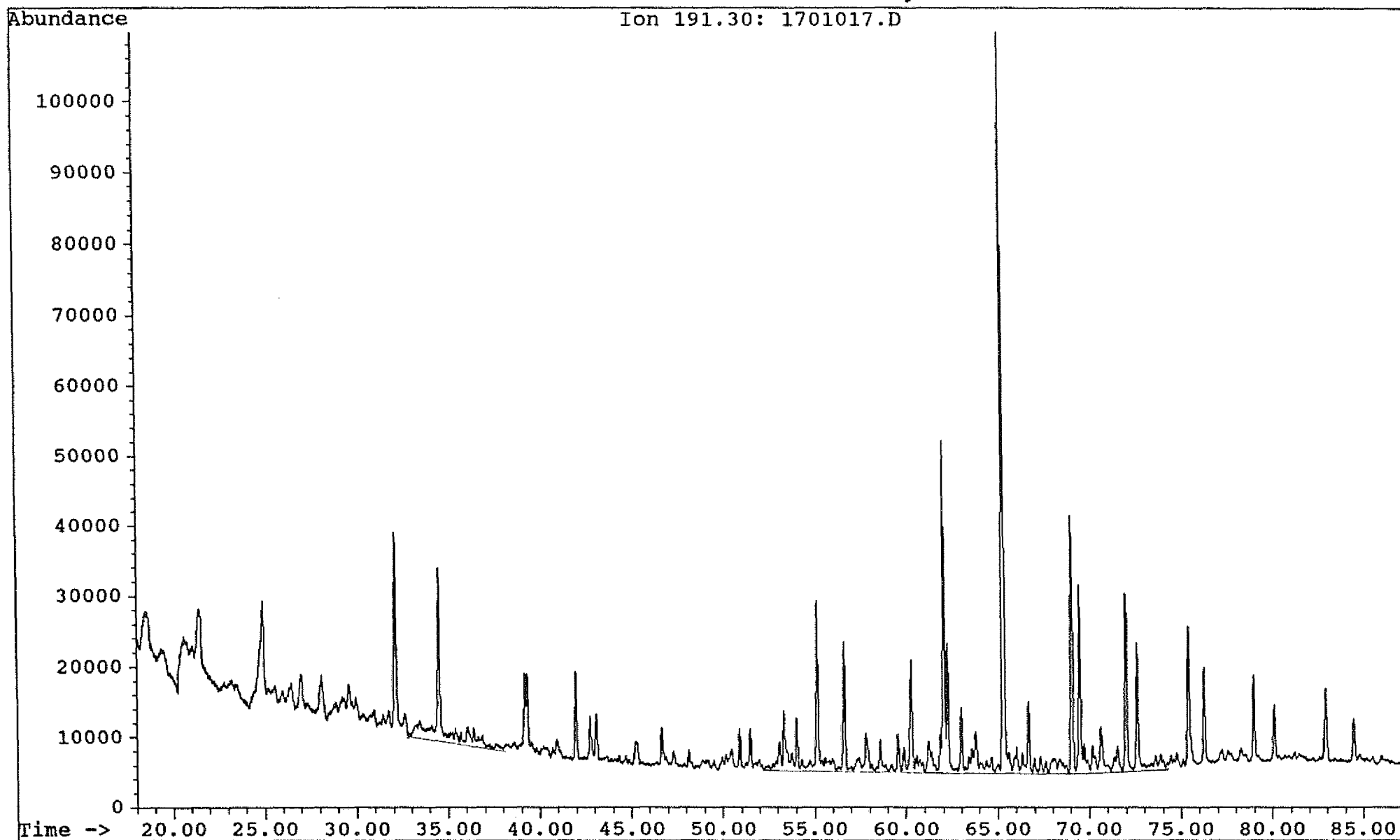
Saga Petroleum a.s.

Date acquired: 6 Oct 92 5:33 pm

File: C:\CHEMPC\DATA\30_31\1701017.D Inst: HP5971A Inj: Split Meth: BMS.M

Sample name:

WELL 31/4-8 2365 sat



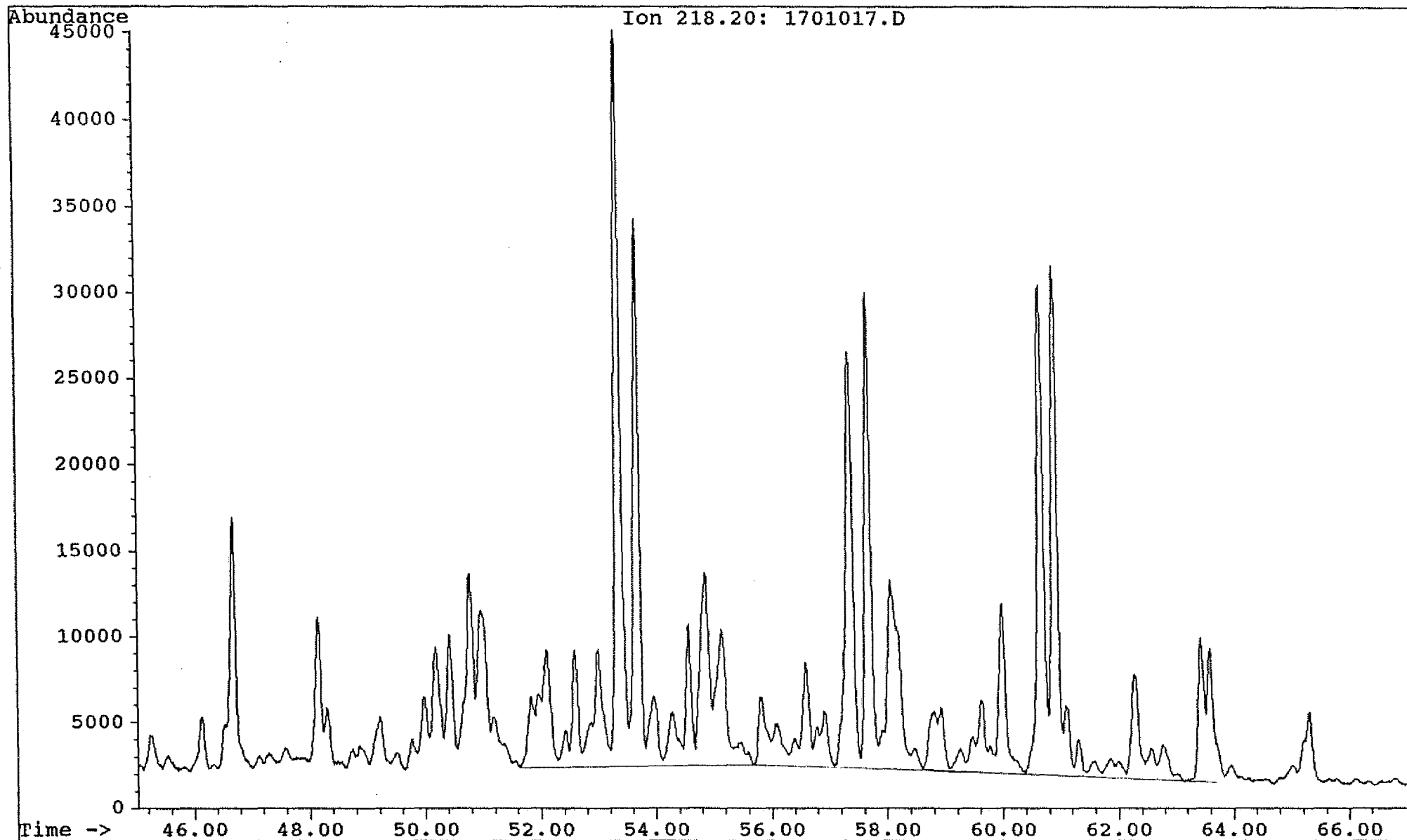
Saga Petroleum a.s.

Date acquired: 6 Oct 92 5:33 pm

File: C:\CHEMPC\DATA\30_31\1701017.D Inst: HP5971A Inj: Split Meth: BMS.M

Sample name:

WELL 31/4-8 2365 sat



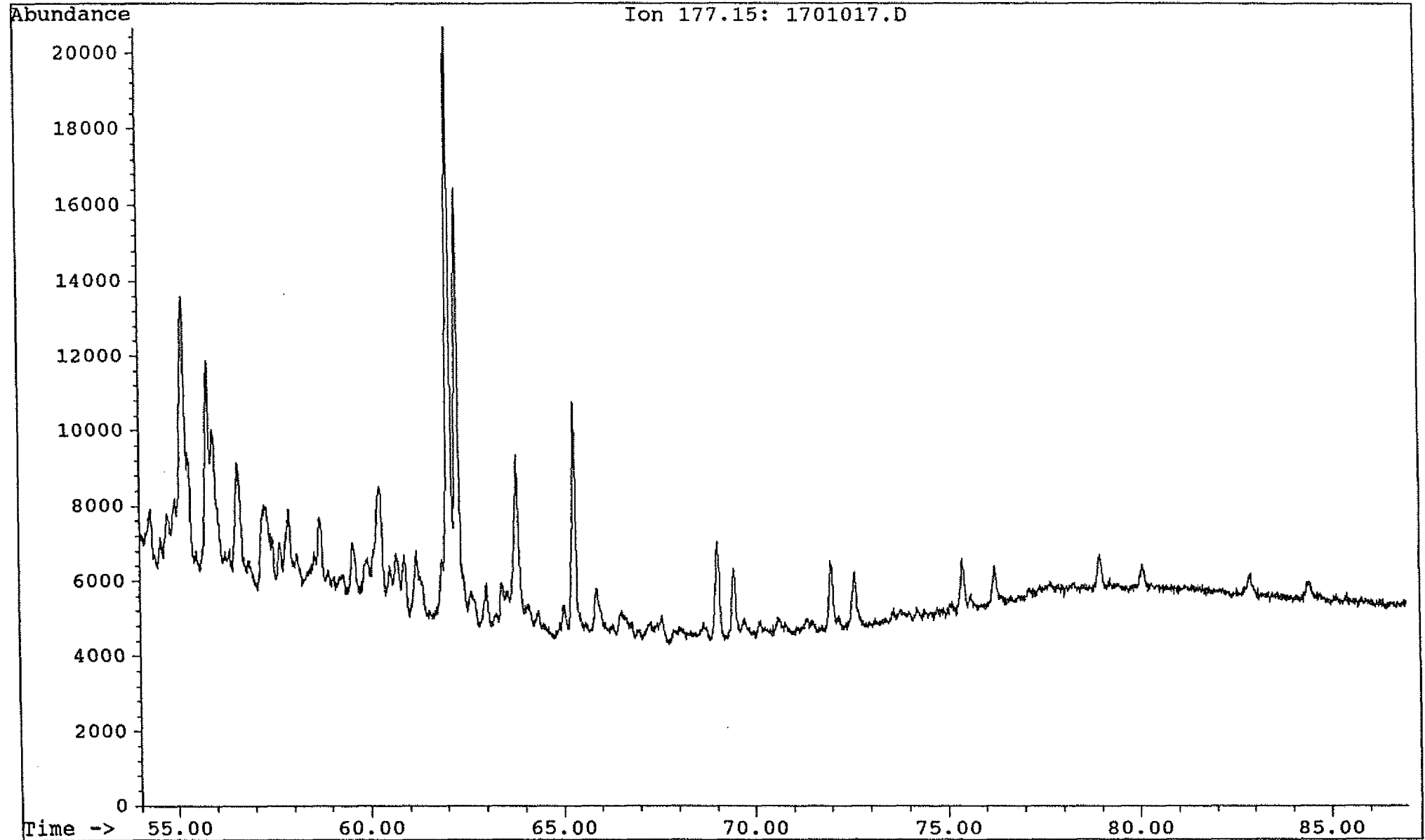
Saga Petroleum a.s.

Date acquired: 6 Oct 92 5:33 pm

File: C:\CHEMPC\DATA\30_31\1701017.D Inst: HP5971A Inj: Split Meth: BMS.M

Sample name:

WELL 31/4-8 2365 sat



Saga Petroleum a.s.

Date acquired: 6 Oct 92 7:16 pm

File: C:\CHEMPC\DATA\30_31\1801018.D Inst: HP5971A Inj: Split Meth: BMS.M

Sample name:

WELL 31/4-8 2389 sat

