



Document Id. : R-EUG-0221
 Reference Code :
 Date : AUGUST 1993
 Revision Number :

Title

GEOCHEMICAL DATA REPORT FOR WELL 15/3-3

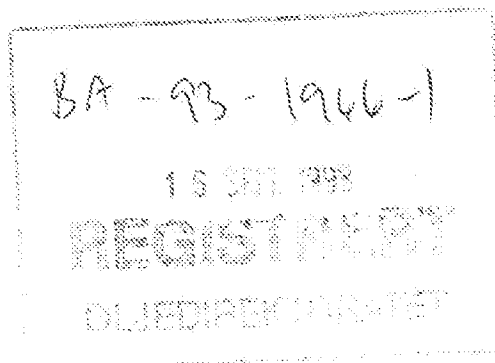
Authors(s)

NIGEL MILLS

Abstract

Eighteen samples from the cored interval in well 15/3-3 have been analysed by Iatroscan (TLC-FID) and the saturated hydrocarbon fraction from 1 sample was analysed by GC-FID and GC/MS. The aromatic hydrocarbon fraction was also analysed by GC-FID.

NOT INCLUDED IN WELL TRADE.



Key Words

15/3-3, geochemistry, GC-FID, GC/MS, Iatroscan

Classification: Free Saga and partners Internal Confidential Strictly confidential

Org. Unit	EUG			
Reviewed	I.Horstad	<i>[Signature]</i>		
Accepted				
Approved	T. Hjalund	<i>[Signature]</i>		

Hovedkontor/Head Office Oslo:

Adresse/Address: Kjerboveien 18, Postboks 490, N-1301 SANDVIKA
 Telefon/Telephone: Nasjonalt 67 12 66 00, Intern. +47 67 12 66 00

Telex/Telex: 78862 Saga n
 Telefax: Nasjonalt 67 126666, Intern. +47 67 126666

Driftsdivisjon/Operations Division Stavanger:

Adresse/Address: Godesettdalen 8, Postboks 117, N-4003 FORUS
 Telefon/Telephone: Nasjonalt 04 67 40 00, Intern. +47 4 67 40 00

Telex/Telex: 33244 sagap n
 Telefax: Nasjonalt 04 670261, Intern. +47 4 670261

1 Objectives

The objective of this study was to characterise the extractable hydrocarbons in eighteen core samples from well 15/3-3.

2 General well information

The wells were drilled by Elf as operator of licence 025 from 5.1.79 to 9.8.79 and reached a total depth of 5116 mRKB. The KB of the rig was 25 metres, and the water depth was 109 metres.

3 Samples and analytical scheme

Eighteen samples were picked from the cored interval in the wells on the 7th of September 1992. All samples were analysed by Iatroscan (TLC-FID), and the saturated hydrocarbon fractions from one sample was analysed by GC-FID and GC/MS. The aromatic hydrocarbon fractions were also analysed by GC-FID.

4 Vitrinite reflectance

No samples were analysed.

5 TOC and Rock Eval

No samples were analysed.

6 Iatroscan (TLC-FID)

Eighteen samples were analysed, and the results are tabulated in table 1.

7 GC-FID

The saturated and aromatic hydrocarbon fractions from 1 sample were analysed by GC-FID. Since the evaporative loss has affected the relative concentration of individual compounds, no ratios were calculated. The GC-FID chromatograms are shown in figure 1.

8 GC/MS

The saturated hydrocarbon fraction from the 1 sample was analysed by GC/MS and the mass chromatograms for m/z 191, 177, 217 and 218 are shown in figure 2.

9 Stable carbon isotopes

No samples were analysed.

Tab. 1

SAGLAB RESULTS MANAGEMENT : EXTRACTION ANALYSIS RESULTS in mg/g Rock

Data for Well 15/3-3

Page 1

Type	St.Depth	En.Depth	Weight (g)	EOM mg/g Rock	EOM mg/g TOC	Sat (mg/g)	Aro (mg/g)	NSO (mg/g)	Asph (mg/g)	Polars (mg/g)	TOC (%)	M/I
CCP	4262.90	4262.90	2.58	1.85		1.45	0.23			0.18		I
CCP	4265.00	4265.00	2.93	1.56		1.29	0.17			0.18		I
CCP	4267.10	4267.10	2.85	1.73		1.44	0.19			0.18		I
CCP	4267.95	4267.95	2.98	0.14		0.87	0.83			0.83		I
CCP	4273.20	4273.20	2.46	0.21		0.15	0.00			0.06		I
CCP	4276.40	4276.40	2.69	0.13		0.07	0.00			0.06		I
CCP	4278.10	4278.10	2.90	0.08		0.02	0.00			0.07		I
CCP	4278.50	4278.50	2.40	0.10		0.02	0.00			0.08		I
CCP	4283.80	4283.80	2.68	0.50		0.28	0.07			0.15		I
CCP	4286.85	4286.85	3.18	0.60		0.39	0.06			0.16		I
CCP	4290.10	4290.10	2.58	0.17		0.00	0.00			0.17		I
CCP	4293.40	4293.40	2.63	0.20		0.03	0.00			0.17		I
CCP	4296.50	4296.50	2.82	0.08		0.00	0.00			0.08		I
CCP	4299.60	4299.60	2.47	0.09		0.00	0.00			0.09		I
CCP	4304.20	4304.20	2.16	0.09		0.00	0.00			0.09		I

18 RESULT(s) selected from the following search criteria:

Mat: NOR, Well: 15/3-3, Type:

CCP, Depth between: 0.000 and

99999.999 m

SAGLAB RESULTS MANAGEMENT : EXTRACTION ANALYSIS RESULTS in mg/g Rock

Data for Well 15/3-3

Page 2

Type	St.Depth	En.Depth	Weight (g)	ECM mg/g Rock	ECM mg/g TOC	Sat (mg/g)	Aro (mg/g)	NSO (mg/g)	Asph (mg/g)	Polars (mg/g)	TOC (%)	M/I
CCP	4306.20	4306.20	2.61	0.04		0.04	0.00			0.00		I
CCP	4550.90	4550.90	2.27	0.31		0.16	0.08			0.07		I
CCP	4559.20	4559.20	2.84	0.04		0.00	0.00			0.04		I
Averages this Well:				0.44	0.00	0.30	0.05	0.00	0.00	0.09	0.00	
Averages all Wells:				0.44	0.00	0.30	0.05	0.00	0.00	0.09	0.00	

18 RESULT(s) selected ..., from the following search criteria:

Matr: NOR, Well: 15/3-3, Type:

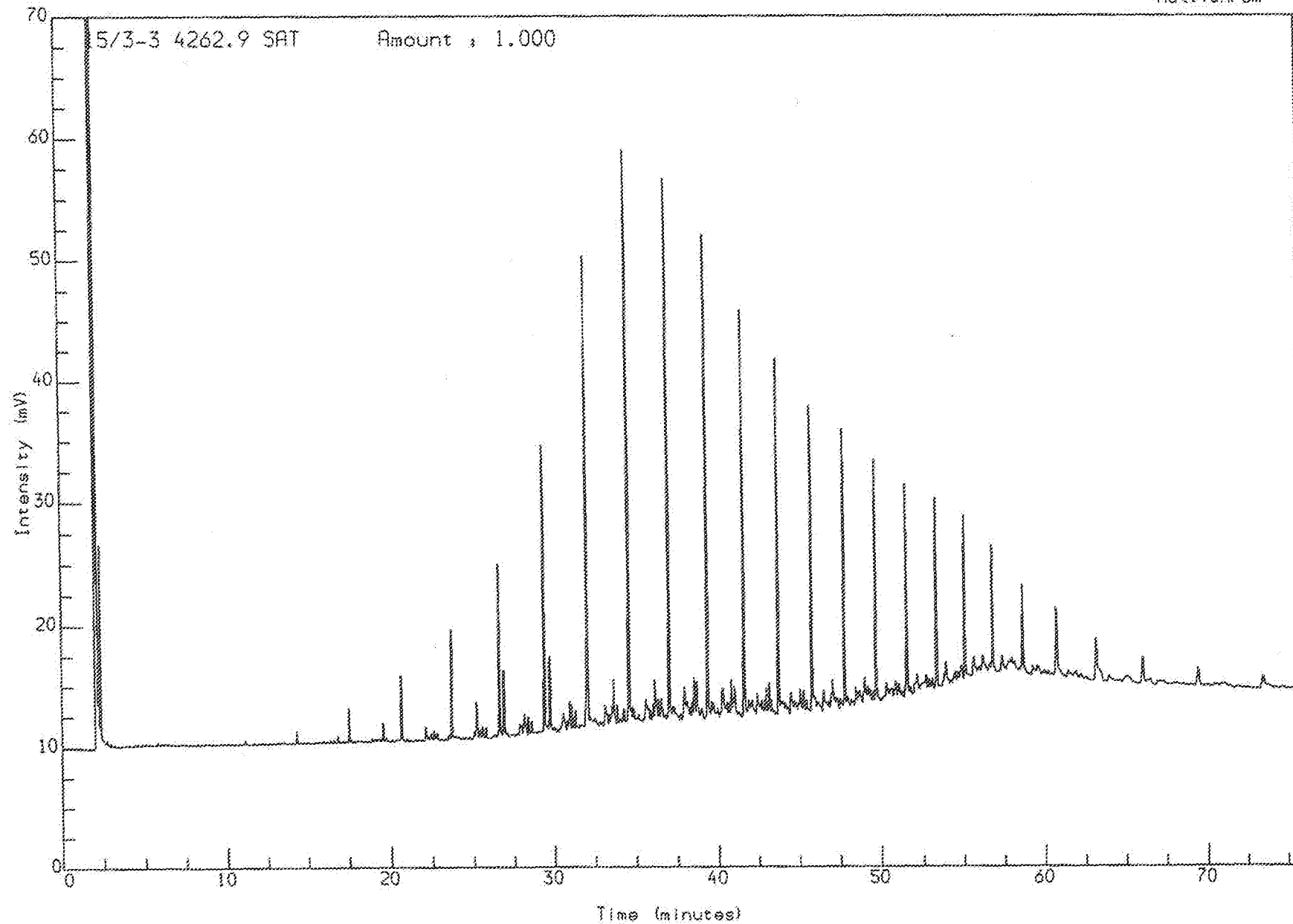
CCP, Depth between: 0.000 and

99999.999 m

Fig. 1

Analysis Name : [D. PROJECT] 3 S101,10,1.

Multichrom

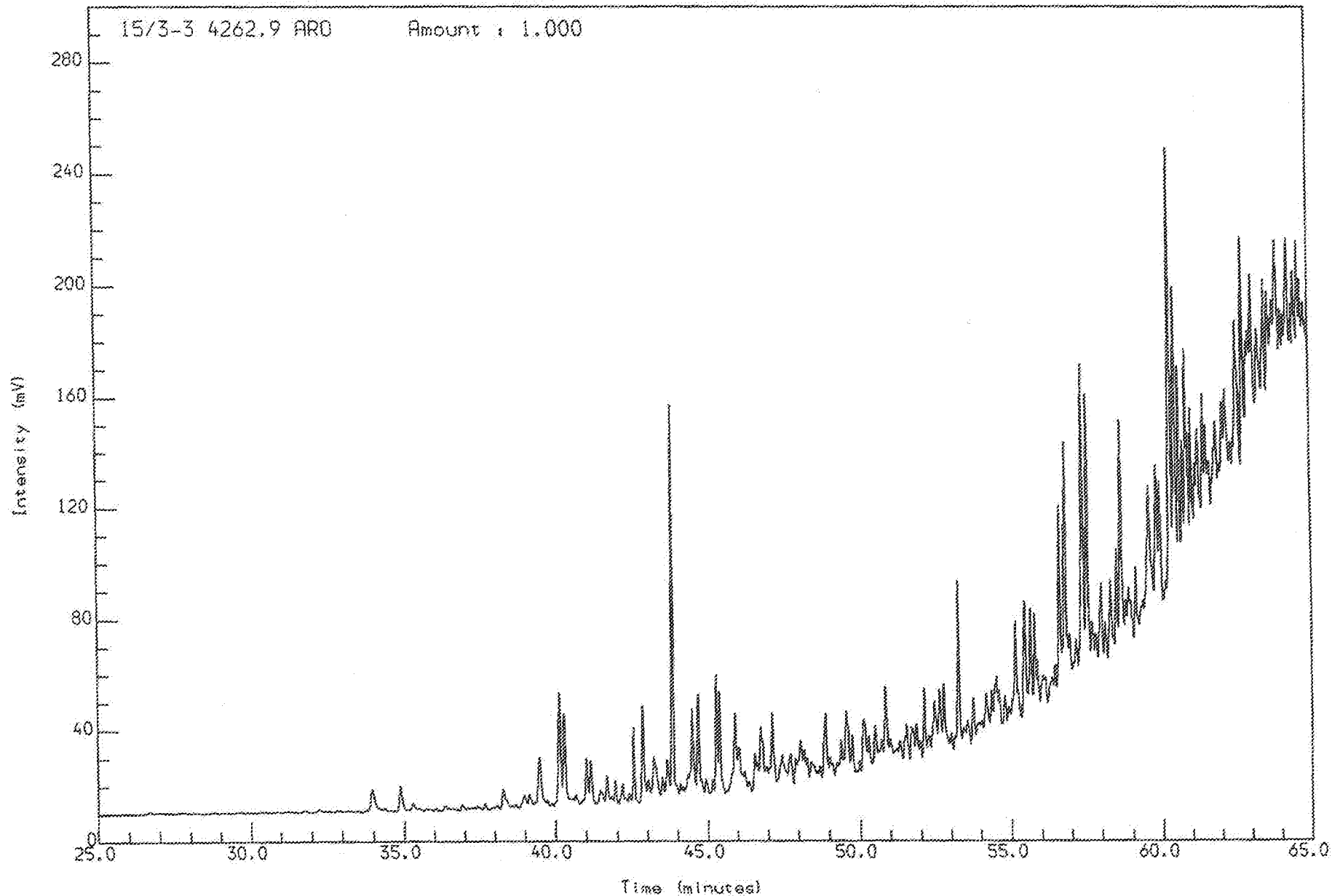


Acquired on 30-SEP-1992 at 01:53

Reported on 2-OCT-1992 at 13:10

Analysis Name : [C PROJECT] 1 A157.13.1.

Multichrom



Acquired on 3-OCT-1992 at 00:27

Reported on 5-OCT-1992 at 13:20

Fig. 2

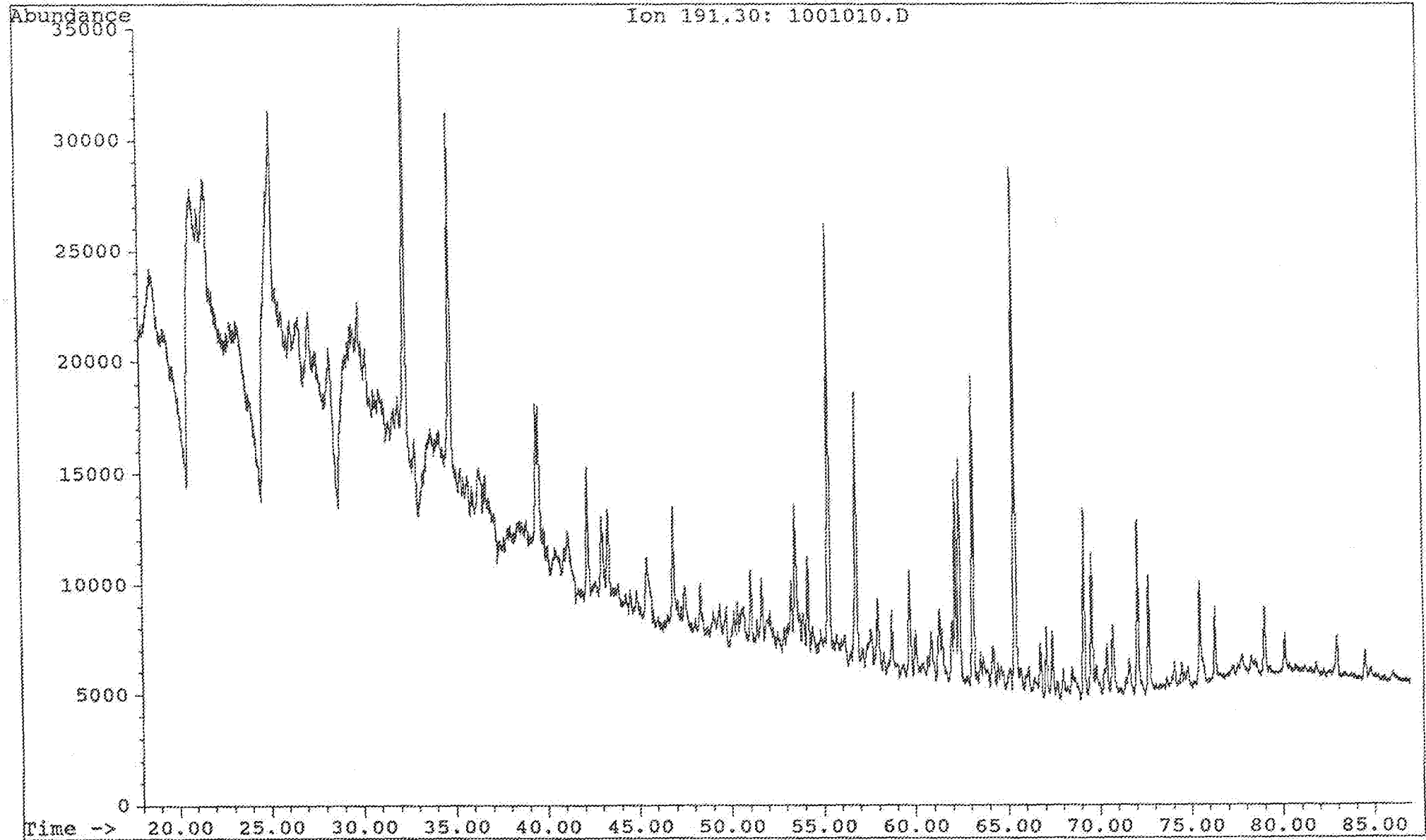
Saga Petroleum a.s.

Date acquired: 2 Oct 92 2:16 am

File: C:\CHEMPC\DATA\KVAD7_15\1001010.D Inst: HP5971A Inj: Split Meth: BMS.M

Sample name:

WELL 15/3-3 4262,9 sat

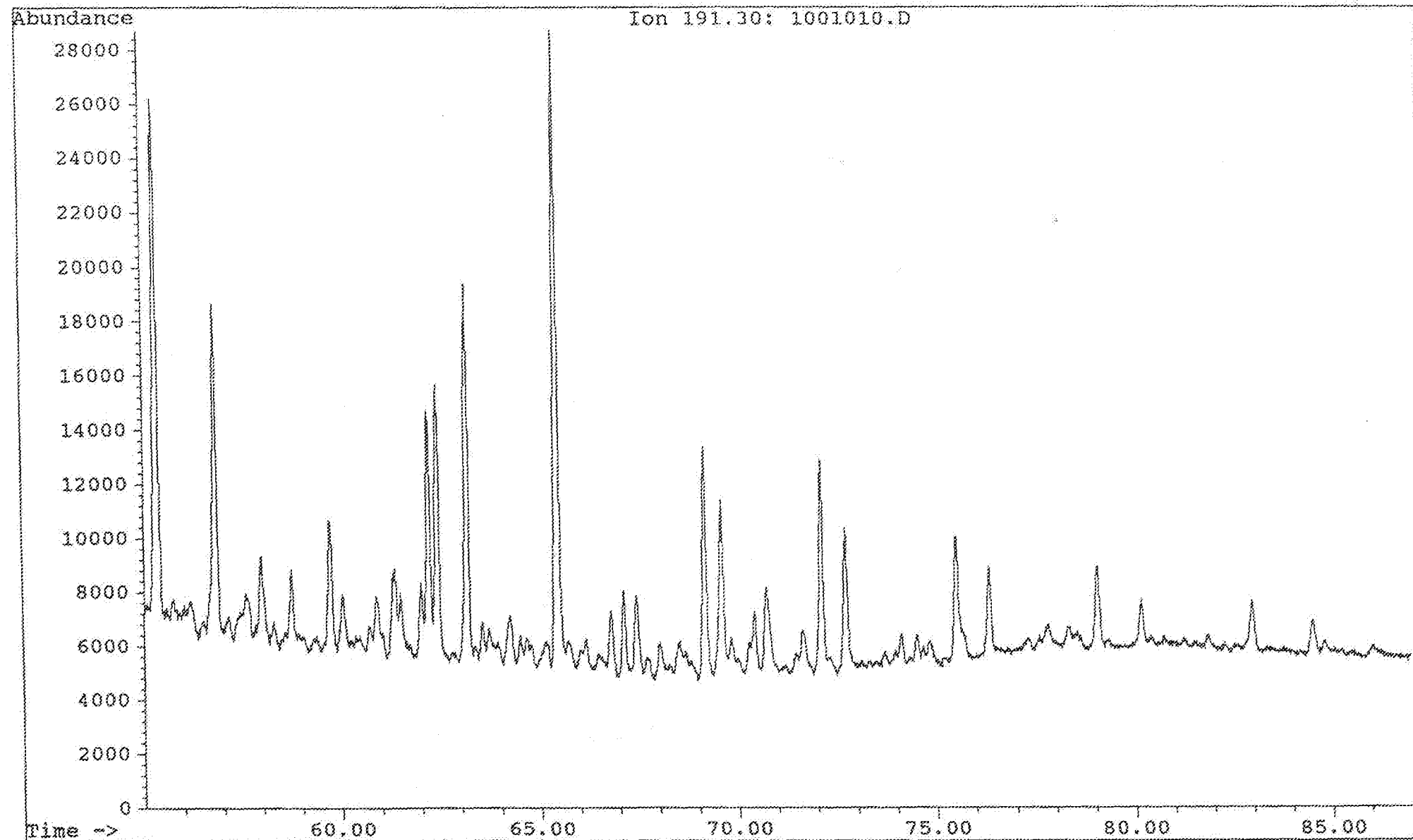


Saga Petroleum a.s.

Date acquired: 2 Oct 92 2:16 am

File: C:\CHEMPC\DATA\KVAD7_15\1001010.D Inst: HP5971A Inj: Split Meth: BMS.M

Sample name: WELL 15/3-3 4262,9 sat

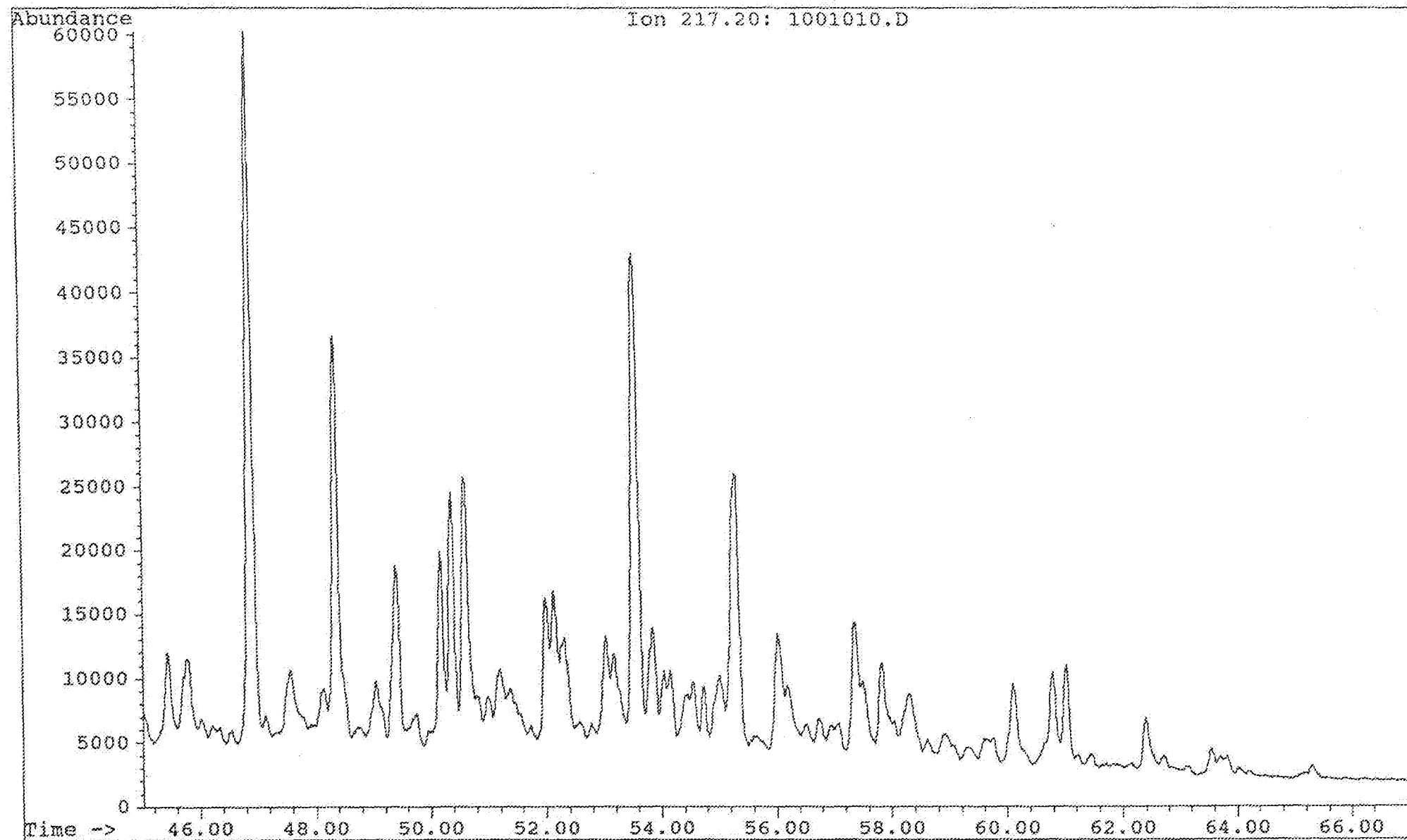


Saga Petroleum a.s.

Date acquired: 2 Oct 92 2:16 am

File: C:\CHEMPC\DATA\KVAD7_15\1001010.D Inst: HP5971A Inj: Split Meth: BMS.M

Sample name: WELL 15/3-3 4262,9 sat

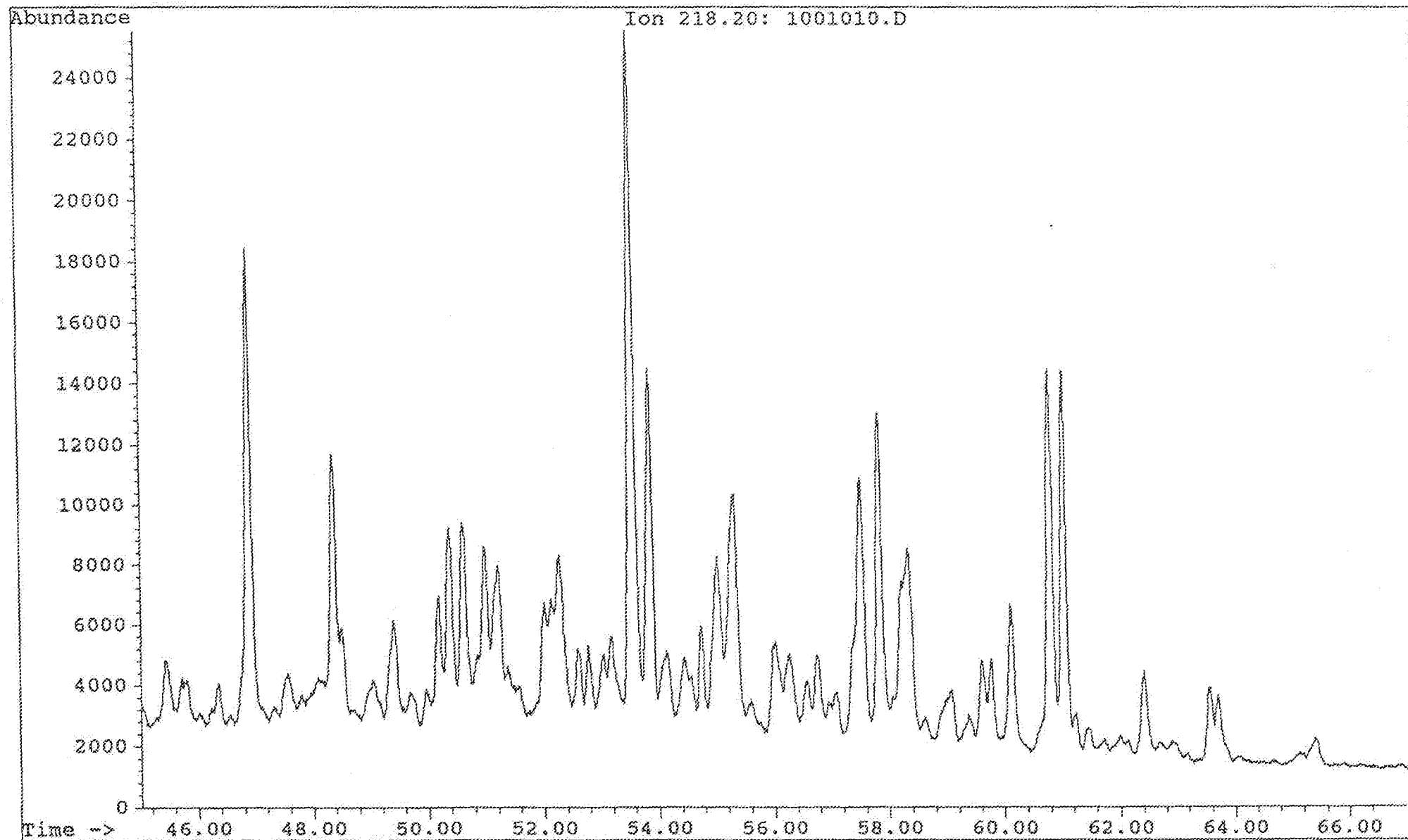


Saga Petroleum a.s.

Date acquired: 2 Oct 92 2:16 am

File: C:\CHEMPC\DATA\KVAD7_15\1001010.D Inst: HP5971A Inj: Split Meth: BMS.M

Sample name: WELL 15/3-3 4262,9 sat



Saga Petroleum a.s.

Date acquired: 2 Oct 92 2:16 am

File: C:\CHEMPC\DATA\KVAD7_15\1001010.D Inst: HP5971A Inj: Split Meth: BMS.M

Sample name: WELL 15/3-3 4262,9 sat

