



Document Id. : R-EUG-0222
 Reference Code :
 Date : AUGUST 1993
 Revision Number :

Title

GEOCHEMICAL DATA REPORT FOR WELL 15/3-4

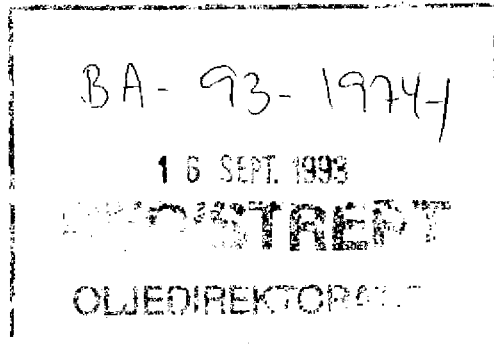
Authors(s)

NIGEL MILLS

Abstract

Ten samples from the cored interval in well 15/3-4 have been analysed by Iatroscan (TLC-FID) and the saturated hydrocarbon fraction from 1 sample was analysed by GC-FID and GC/MS. The aromatic hydrocarbon fraction was also analysed by GC-FID.

NOT INCLUDED IN WELL TRADE.



Key Words

15/3-4, geochemistry, GC-FID, GC/MS, Iatroscan

Classification: Free Saga and partners Internal Confidential Strictly confidential

Org. Unit	EUG			
Reviewed	I.Horstad	<i>[Signature]</i>		
Accepted		<i>[Signature]</i>		
Approved	T.Haaland	<i>[Signature]</i>		

Hovedkontor/Head Office Oslo:

Adresse/Address
Kjerboveien 18
Postboks 490
N-1301 SANDVIKA

Telefon/Telephone
Nasjonalt 87 12 66 00
Intern. +47 87 12 66 00

Teleks/Telex
78852 Saga n
Telefax
Nasjonalt 87 126666
Intern. +47 87 126666

Driftsdivisjon/Operations Division Stavanger:

Adresse/Address
Godeasetdalen 8
Postboks 117
N-4003 FORUS

Telefon/Telephone
Nasjonalt 04 57 40 00
Intern. +47 4 57 40 00

Teleks/Telex
33244 sagap n
Telefax
Nasjonalt 04 570261
Intern. +47 4 570261

1 Objectives

The objective of this study was to characterise the extractable hydrocarbons in ten core samples from well 15/3-4.

2 General well information

The wells were drilled by Elf as operator of licence 025 from 3.10.81 to 30.3.82 and reached a total depth of 4259 mRKB. The KB of the rig was 25 metres, and the water depth was 107 metres.

3 Samples and analytical scheme

Ten samples were picked from the cored interval in the wells on the 7th of September 1992. All samples were analysed by Iatroscan (TLC-FID), and the saturated hydrocarbon fractions from one sample was analysed by GC-FID and GC/MS. The aromatic hydrocarbon fractions were also analysed by GC-FID.

4 Vitrinite reflectance

No samples were analysed.

5 TOC and Rock Eval

No samples were analysed.

6 Iatroscan (TLC-FID)

Ten samples were analysed, and the results are tabulated in table 1.

7 GC-FID

The saturated and aromatic hydrocarbon fractions from 1 sample were analysed by GC-FID. Since the evaporative loss has affected the relative concentration of individual compounds, no ratios were calculated. The GC-FID chromatograms are shown in figure 1.

8 GC/MS

The saturated hydrocarbon fraction from the 1 sample was analysed by GC/MS and the mass chromatograms for m/z 191, 177, 217 and 218 are shown in figure 2.

9 Stable carbon isotopes

No samples were analysed.

Tab. 1

SAGLAB RESULTS MANAGEMENT : EXTRACTION ANALYSIS RESULTS in mg/g Rock

Data for Well 15/3-4

Page 1

Type	St.Depth	En.Depth	Weight (g)	EOM mg/g Rock	EOM mg/g TOC	Sat (mg/g)	Aro (mg/g)	NSO (mg/g)	Asph (mg/g)	Polars (mg/g)	TOC (%)	M/I
CCP	3795.70	3795.70	2.23	0.80		0.58	0.13			0.09		I
CCP	3796.50	3796.50	3.18	2.19		1.69	0.38			0.12		I
CCP	3799.85	3799.85	3.10	2.16		1.72	0.37			0.08		I
CCP	3803.70	3803.70	3.06	2.50		1.92	0.50			0.08		I
CCP	3813.70	3813.70	2.93	0.97		0.78	0.14			0.05		I
CCP	3817.42	3817.42	2.46	1.57		1.21	0.29			0.08		I
CCP	3822.95	3822.95	2.66	0.93		0.73	0.13			0.07		I
CCP	3824.78	3824.78	3.02	0.74		0.58	0.10			0.06		I
CCP	3825.85	3825.85	2.70	1.14		0.89	0.16			0.09		I
CCP	3835.05	3835.05	2.45	0.94		0.64	0.13			0.18		I
Averages this Well:				1.39	0.00	1.07	0.23	0.00	0.00	0.09	0.00	
Averages all Wells:				1.39	0.00	1.07	0.23	0.00	0.00	0.09	0.00	

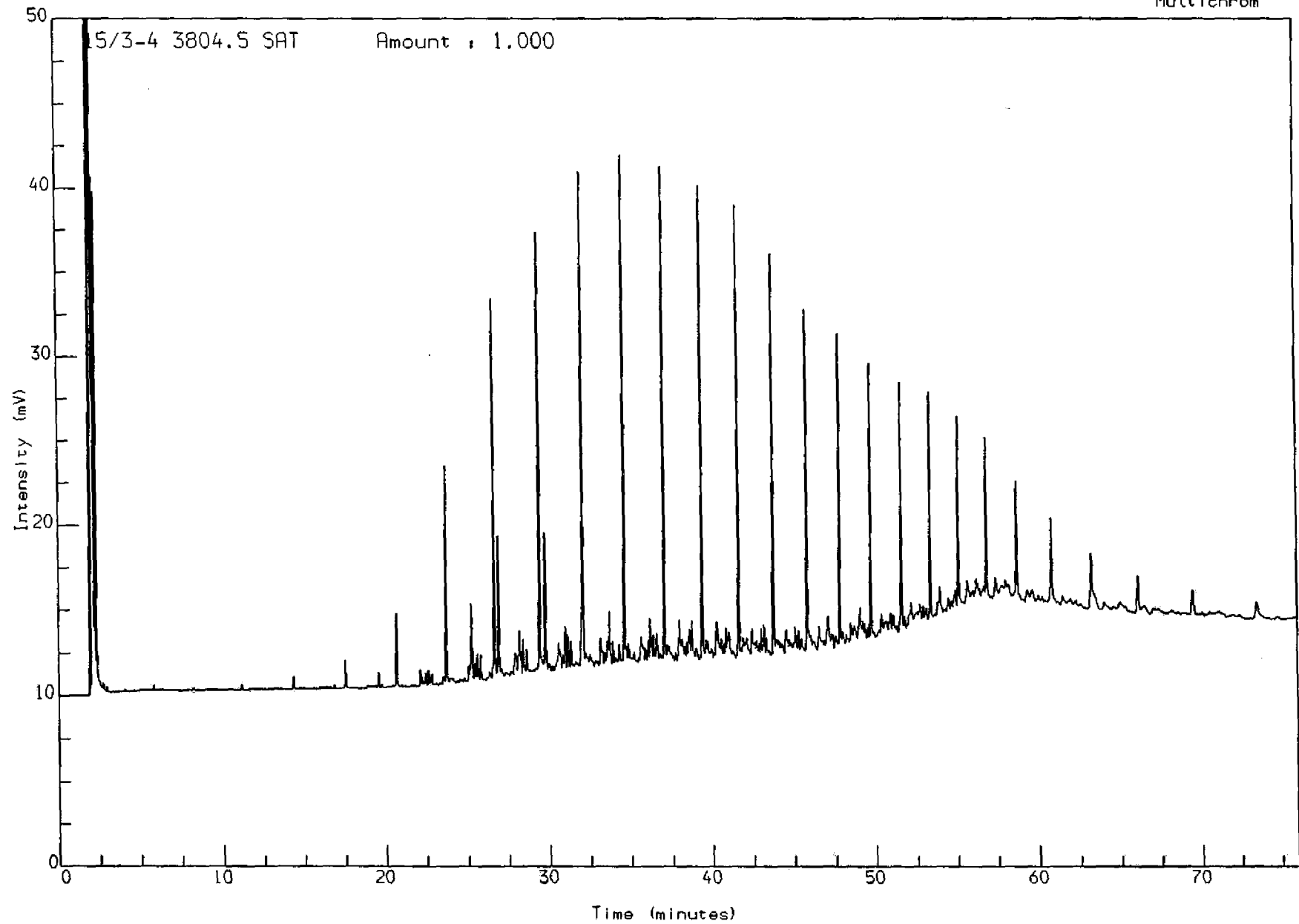
10 RESULT(s) selected ..., from the following search criteria:

Nat: NOR, Well: 15/3-4, Type:
CCP, Depth between: 0.000 and
99999.990 m

Fig. 1

Analysis Name : [D:\PROJECT] 3 S101.11.1.

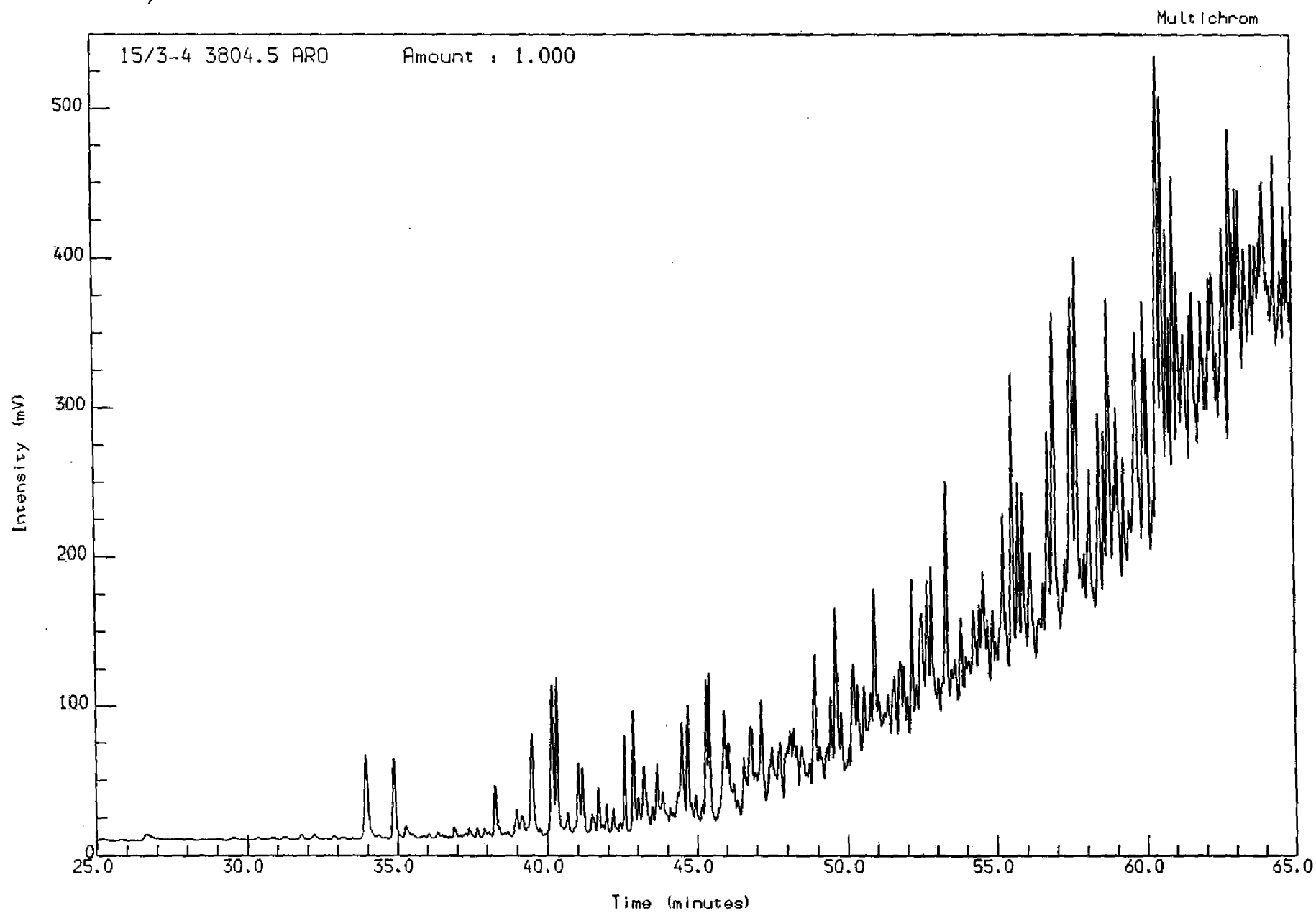
Multichrom



Acquired on 30-SEP-1992 at 03:14

Reported on 2-OCT-1992 at 13:11

Analysis Name : [CONFIDENTIAL] 1 A157,14,1.



Acquired on 3-OCT-1992 at 01:57

Reported on 5-OCT-1992 at 13:21

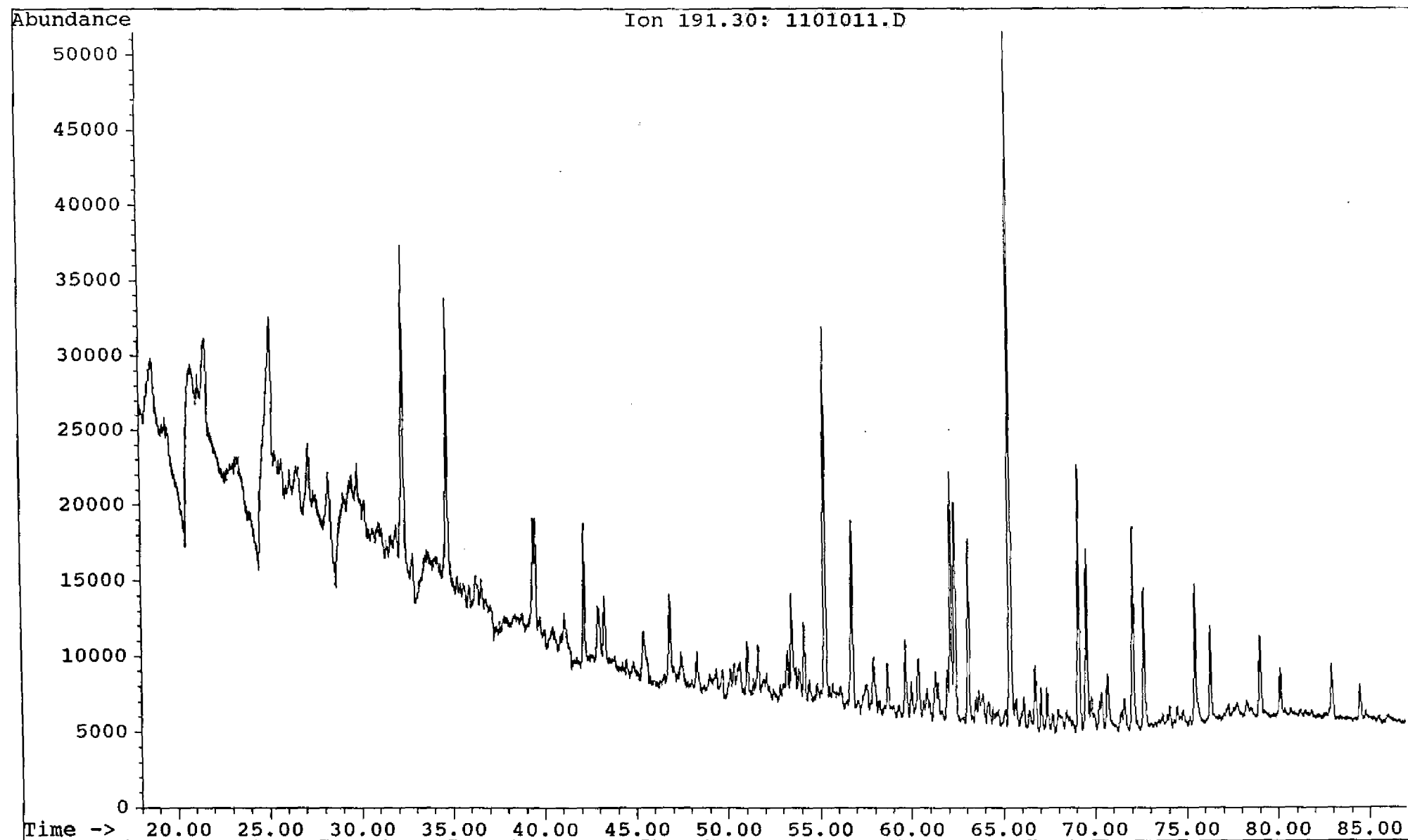
Fig. 2

Saga Petroleum a.s.

Date acquired: 2 Oct 92 3:59 am

File: C:\CHEMPC\DATA\KVAD7_15\1101011.D Inst: HP5971A Inj: Split Meth: BMS.M

Sample name: WELL 15/3-4 3804,5 sat



Saga Petroleum a.s.

File: C:\CHEMPC\DATA\KVAD7_15\1101011.D

Inst: HP5971A

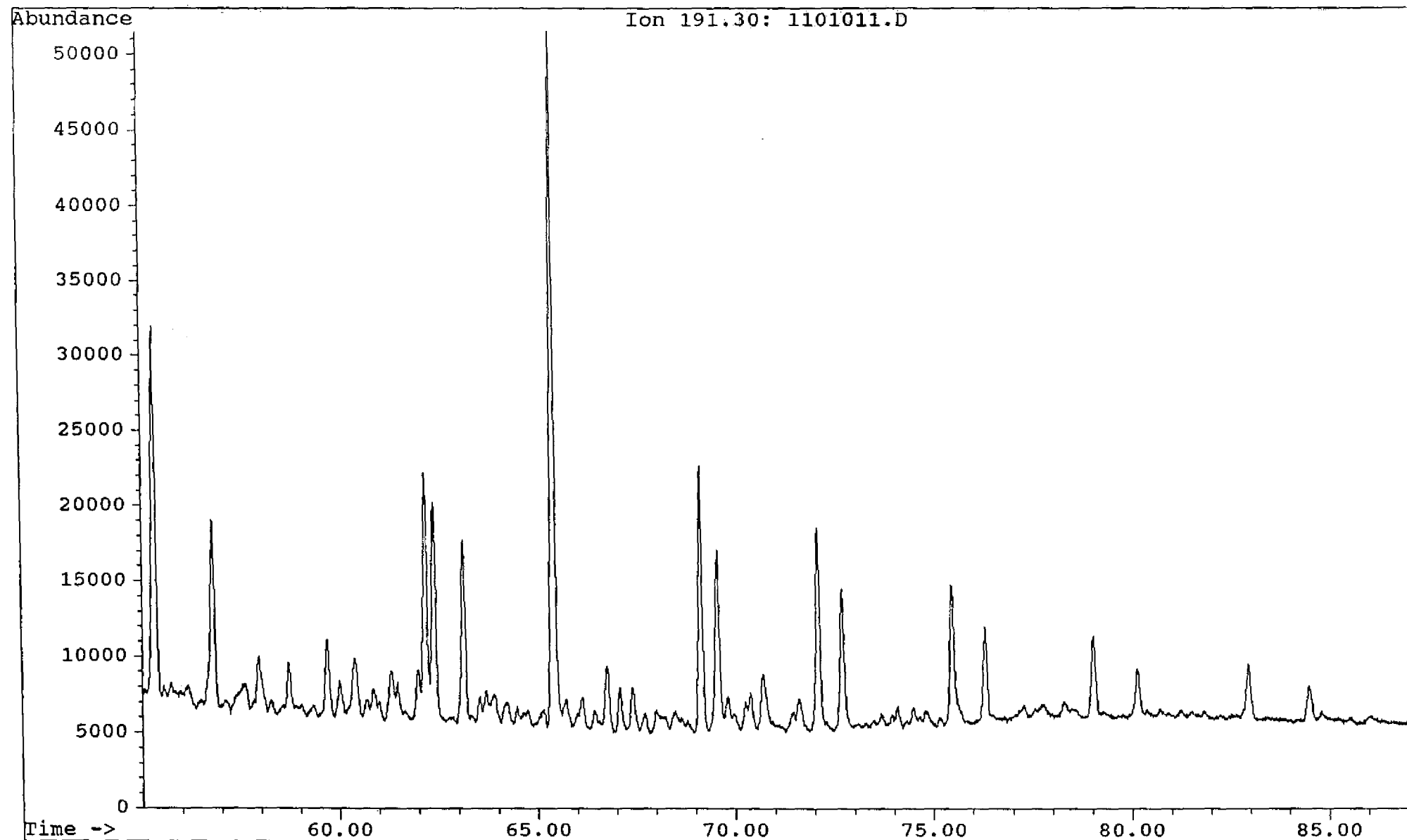
Inj: Split

Date acquired: 2 Oct 92 3:59 am

Meth: BMS.M

Sample name:

WELL 15/3-4 3804,5 sat

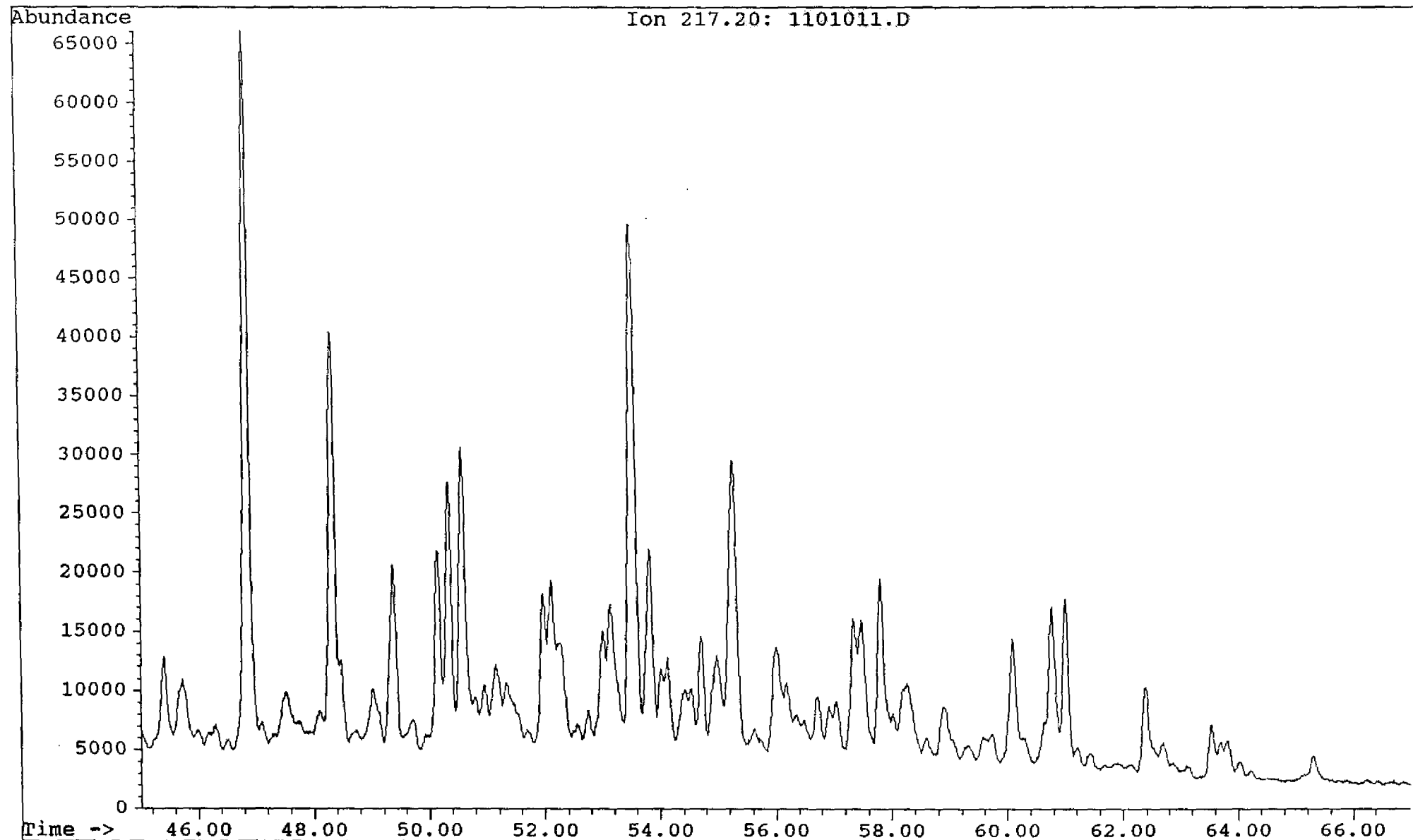


Saga Petroleum a.s.

Date acquired: 2 Oct 92 3:59 am

File: C:\CHEMPC\DATA\KVAD7_15\1101011.D Inst: HP5971A Inj: Split Meth: BMS.M

Sample name: WELL 15/3-4 3804,5 sat

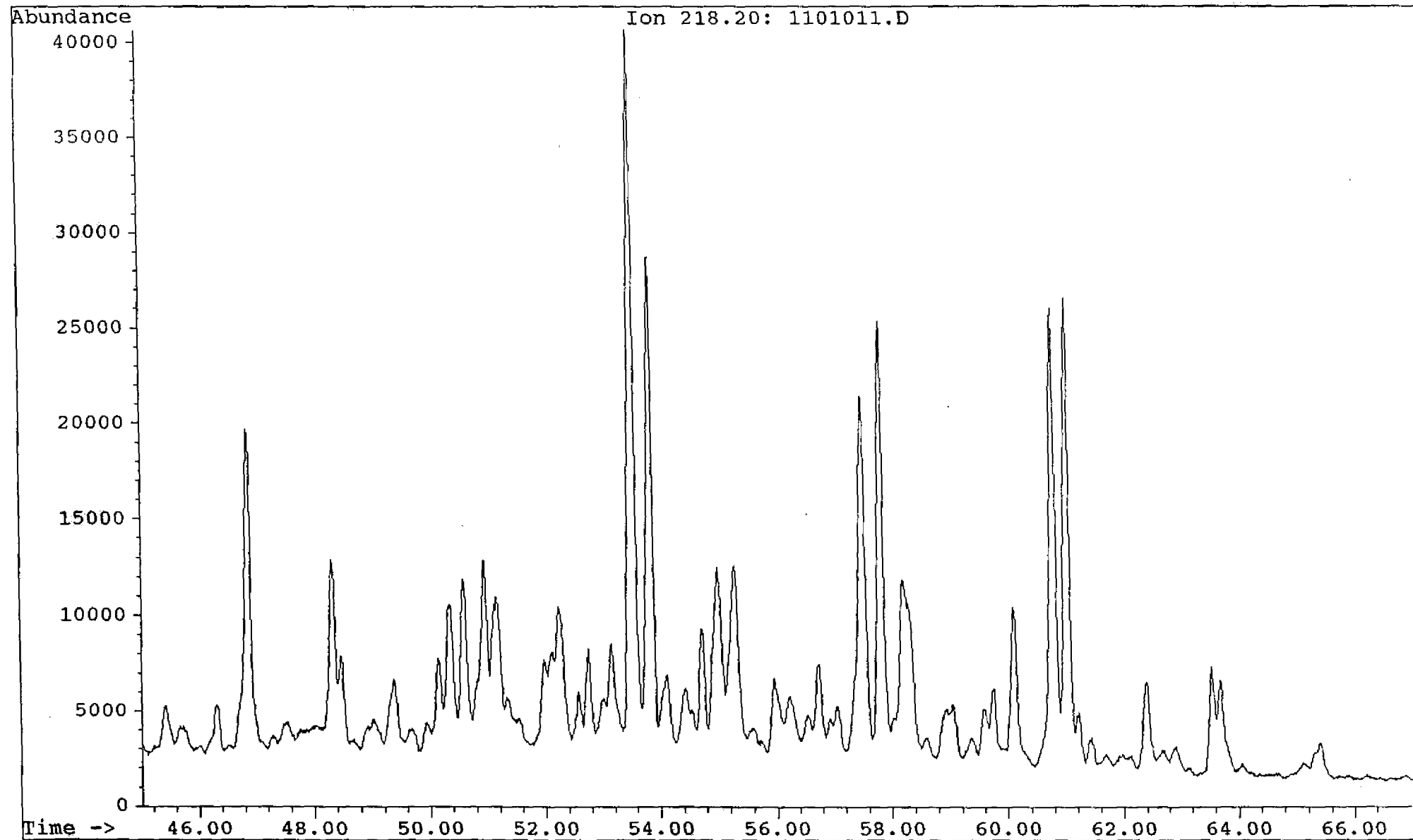


Saga Petroleum a.s.

Date acquired: 2 Oct 92 3:59 am

File: C:\CHEMPC\DATA\KVAD7_15\1101011.D Inst: HP5971A Inj: Split Meth: BMS.M

Sample name: WELL 15/3-4 3804,5 sat



Saga Petroleum a.s.

Date acquired: 2 Oct 92 3:59 am

File: C:\CHEMPC\DATA\KVAD7_15\1101011.D Inst: HP5971A Inj: Split Meth: BMS.M

Sample name: WELL 15/3-4 3804,5 sat

