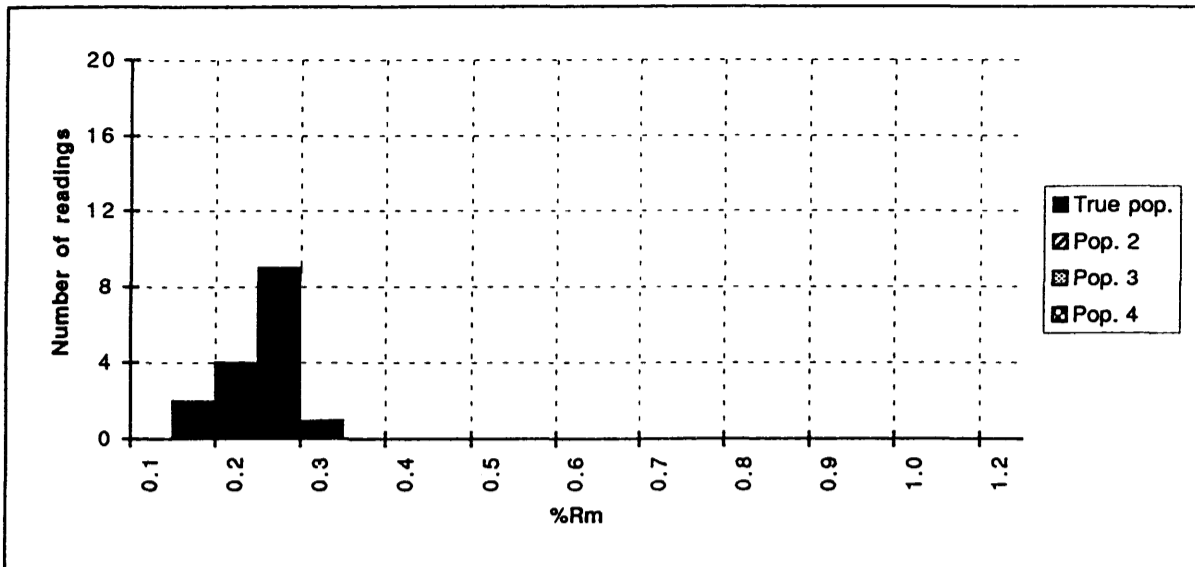
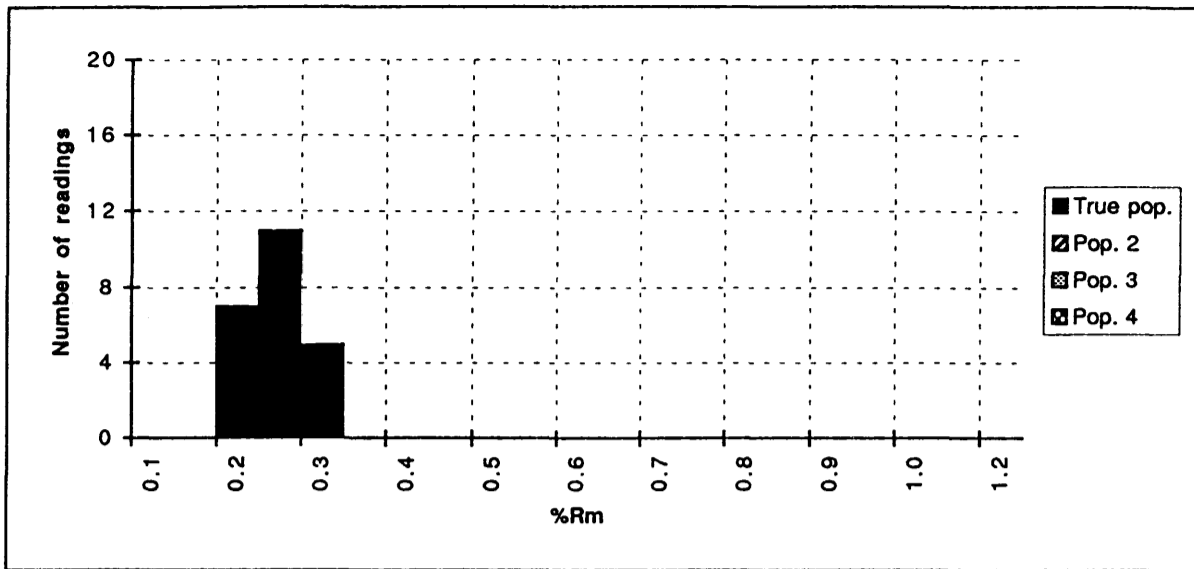


Vitrinite reflectance sample data sheet



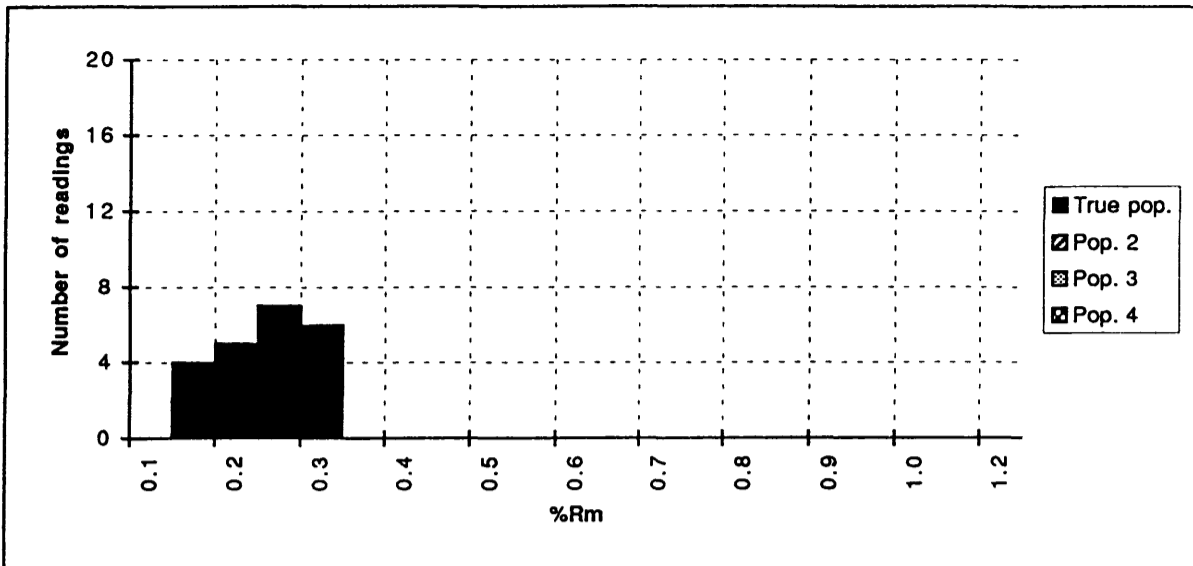
IFE no.	980214	%Rm readings	True pop.	Pop. 2	Pop. 3	Pop. 4
Well	6204/10-2	Mean±std.dev.	0.25±0.04			
Depth, mRKB	410	Individual	0.17			
Sample type	DC	measurements	0.18			
Lithology	CLYST/SST	3	0.20			
Preparation	HF	4	0.22			
Date of analysis	18.03.98	5	0.23			
		6	0.24			
Quality rating		7	0.25			
Abundance of vitrinite	-	8	0.25			
Identification of vitrinite	O	9	0.26			
Type of vitrinite	O	10	0.26			
Particle size	-	11	0.27			
Particle surface quality	O	12	0.27			
Abundance of pyrite	O	13	0.27			
Average sample quality	M	14	0.27			
		15	0.27			
Legend to quality rating		16	0.31			
No effect on the readings	O	17				
Possibly too low readings	-	18				
Possibly too high readings	+	19				
Good quality	G	20				
Moderate quality	M	21				
Poor quality	P	22				
Not vitrinite	X	23				
Mud additive	A	24				
		25				
Comments		26				
		27				
		28				
		29				
		30				

Vitrinite reflectance sample data sheet



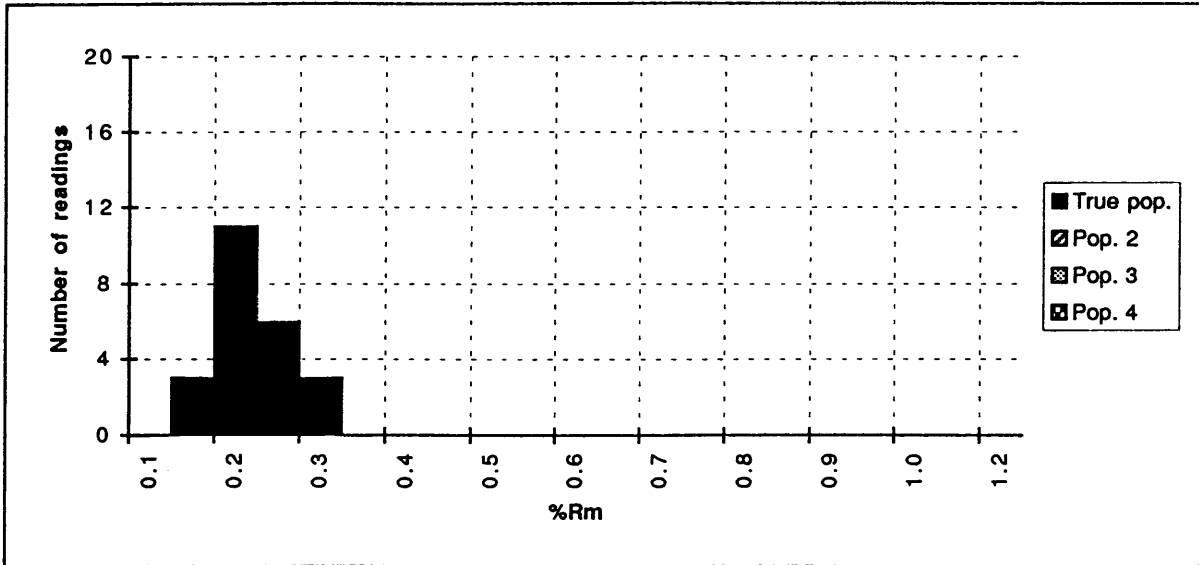
IFE no.	980215	%Rm readings	True pop.	Pop. 2	Pop. 3	Pop. 4
Well	6204/10-2	Mean±std.dev.	0.27±0.03			
Depth, mRKB	580	Individual	0.20			
Sample type	DC	measurements	0.22			
Lithology	CLYST/SST	3	0.23			
Preparation	HF	4	0.23			
Date of analysis	18.03.98	5	0.24			
		6	0.24			
Quality rating		7	0.24			
Abundance of vitrinite	O	8	0.25			
Identification of vitrinite	O	9	0.25			
Type of vitrinite	O	10	0.27			
Particle size	O	11	0.28			
Particle surface quality	O	12	0.28			
Abundance of pyrite	+	13	0.28			
Average sample quality	G	14	0.28			
		15	0.29			
Legend to quality rating		16	0.29			
No effect on the readings	O	17	0.29			
Possibly too low readings	-	18	0.29			
Possibly too high readings	+	19	0.30			
Good quality	G	20	0.30			
Moderate quality	M	21	0.30			
Poor quality	P	22	0.31			
Not vitrinite	X	23	0.31			
Mud additive	A	24				
		25				
Comments		26				
		27				
		28				
		29				
		30				

Vitrinite reflectance sample data sheet



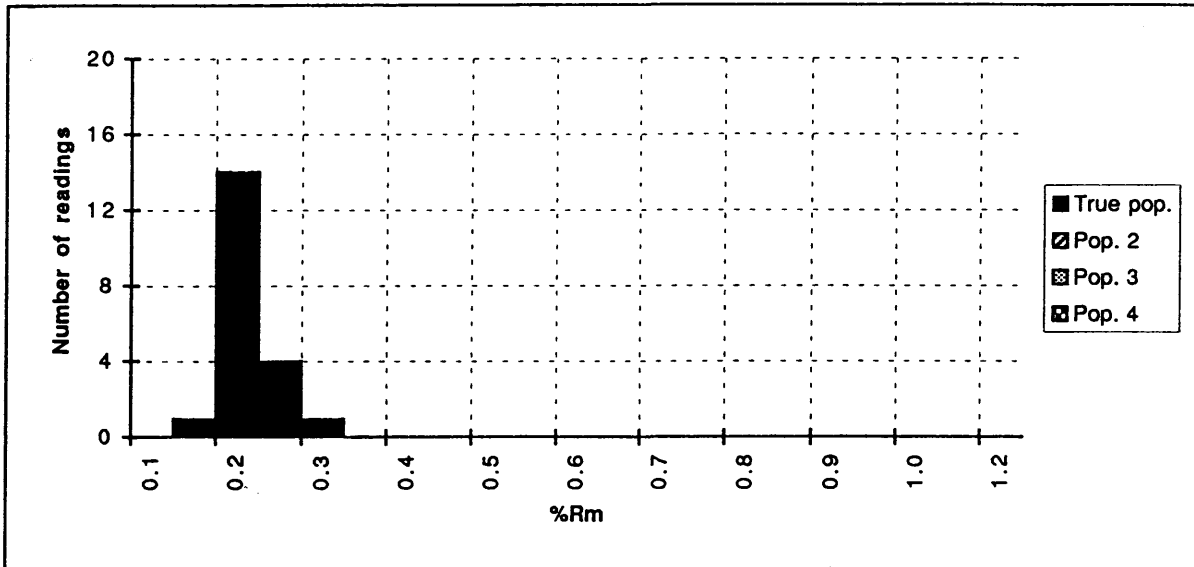
IFE no.	980216	%Rm readings	True pop.	Pop. 2	Pop. 3	Pop. 4
Well	6204/10-2	Mean±std.dev.	0.26±0.05			
Depth, mRKB	610	Individual	0.17			
Sample type	DC	measurements	0.19			
Lithology	CLYST/SST	3	0.19			
Preparation	HF	4	0.19			
Date of analysis	18.03.98	5	0.22			
		6	0.22			
Quality rating		7	0.24			
Abundance of vitrinite	O	8	0.24			
Identification of vitrinite	O	9	0.24			
Type of vitrinite	O	10	0.25			
Particle size	-	11	0.26			
Particle surface quality	O	12	0.27			
Abundance of pyrite	+	13	0.27			
Average sample quality	M	14	0.28			
		15	0.28			
Legend to quality rating		16	0.28			
No effect on the readings	O	17	0.30			
Possibly too low readings	-	18	0.30			
Possibly too high readings	+	19	0.31			
Good quality	G	20	0.31			
Moderate quality	M	21	0.32			
Poor quality	P	22	0.33			
Not vitrinite	X	23				
Mud additive	A	24				
		25				
Comments		26				
		27				
		28				
		29				
		30				

Vitrinite reflectance sample data sheet



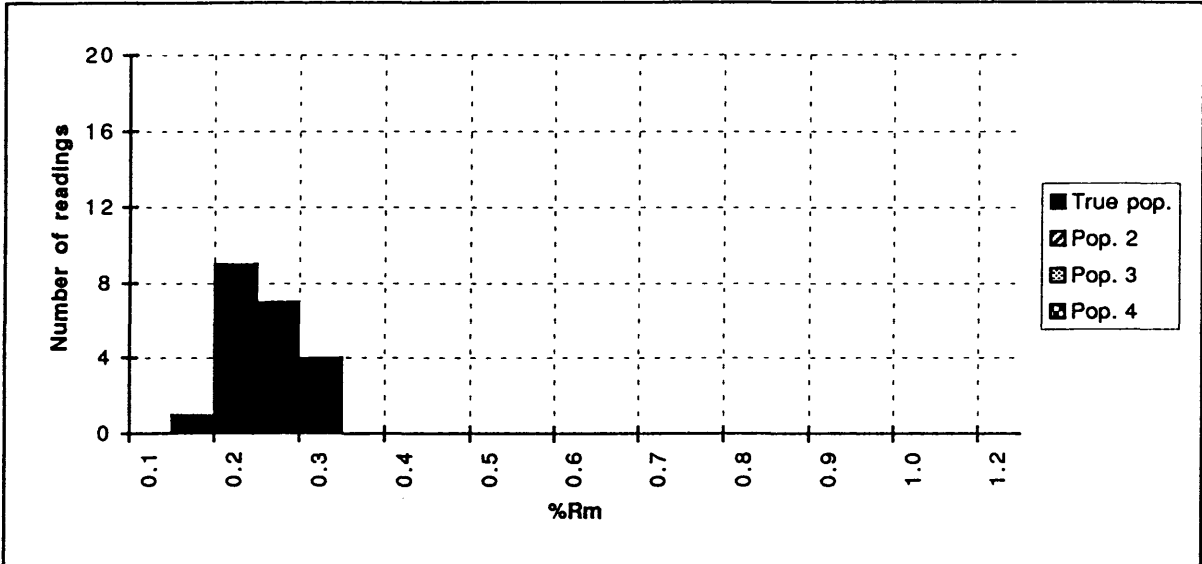
IFE no.	980217	%Rm readings	True pop.	Pop. 2	Pop. 3	Pop. 4
Well	6204/10-2	Mean±std.dev.	0.24±0.04			
Depth, mRKB	710	Individual	0.19			
Sample type	DC	measurements	0.19			
Lithology	CLYST/SST	3	0.20			
Preparation	HF	4	0.20			
Date of analysis	18.03.98	5	0.20			
		6	0.21			
Quality rating		7	0.21			
Abundance of vitrinite	O	8	0.22			
Identification of vitrinite	O	9	0.23			
Type of vitrinite	O	10	0.23			
Particle size	-	11	0.23			
Particle surface quality	O	12	0.24			
Abundance of pyrite	+	13	0.24			
Average sample quality	M	14	0.25			
		15	0.26			
Legend to quality rating		16	0.28			
No effect on the readings	O	17	0.29			
Possibly too low readings	-	18	0.29			
Possibly too high readings	+	19	0.30			
Good quality	G	20	0.30			
Moderate quality	M	21	0.30			
Poor quality	P	22	0.31			
Not vitrinite	X	23				
Mud additive	A	24				
		25				
Comments		26				
		27				
		28				
		29				
		30				

Vitrinite reflectance sample data sheet



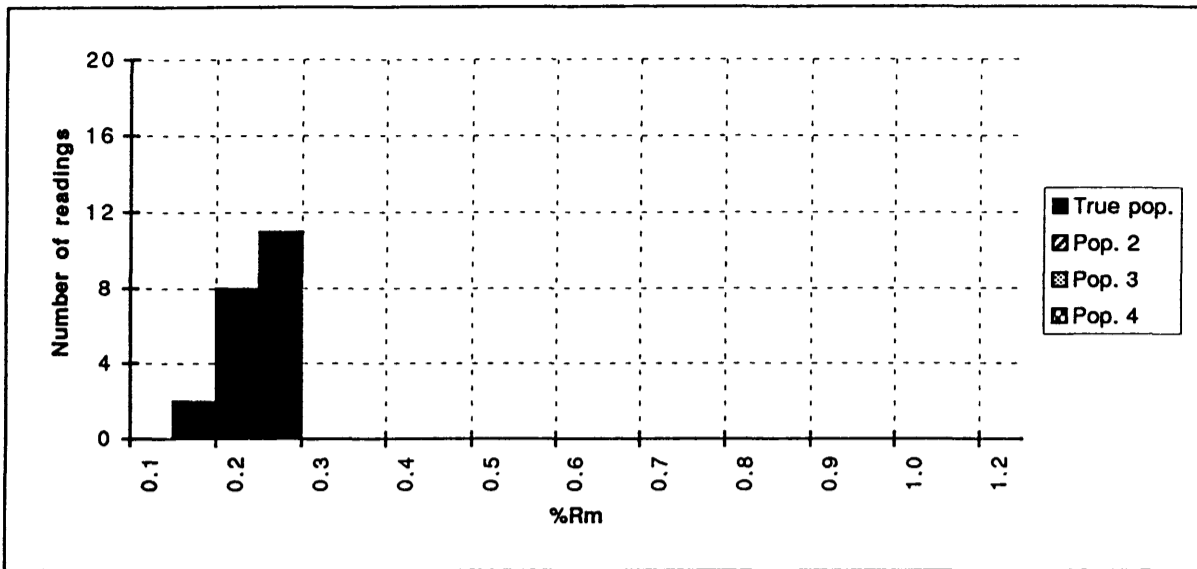
IFE no.	980218	%Rm readings	True pop.	Pop. 2	Pop. 3	Pop. 4
Well	6204/10-2	Mean±std.dev.	0.23±0.03			
Depth, mRKB	750	Individual	0.19			
Sample type	DC	measurements	0.20			
Lithology	CLYST/SST	3	0.20			
Preparation	HF	4	0.20			
Date of analysis	18.03.98	5	0.20			
		6	0.20			
Quality rating		7	0.20			
Abundance of vitrinite	O	8	0.21			
Identification of vitrinite	O	9	0.21			
Type of vitrinite	O	10	0.21			
Particle size	-	11	0.21			
Particle surface quality	O	12	0.22			
Abundance of pyrite	+	13	0.22			
Average sample quality	M	14	0.24			
		15	0.24			
Legend to quality rating		16	0.25			
No effect on the readings	O	17	0.25			
Possibly too low readings	-	18	0.26			
Possibly too high readings	+	19	0.27			
Good quality	G	20	0.33			
Moderate quality	M	21				
Poor quality	P	22				
Not vitrinite	X	23				
Mud additive	A	24				
		25				
Comments		26				
		27				
		28				
		29				
		30				

Vitrinite reflectance sample data sheet



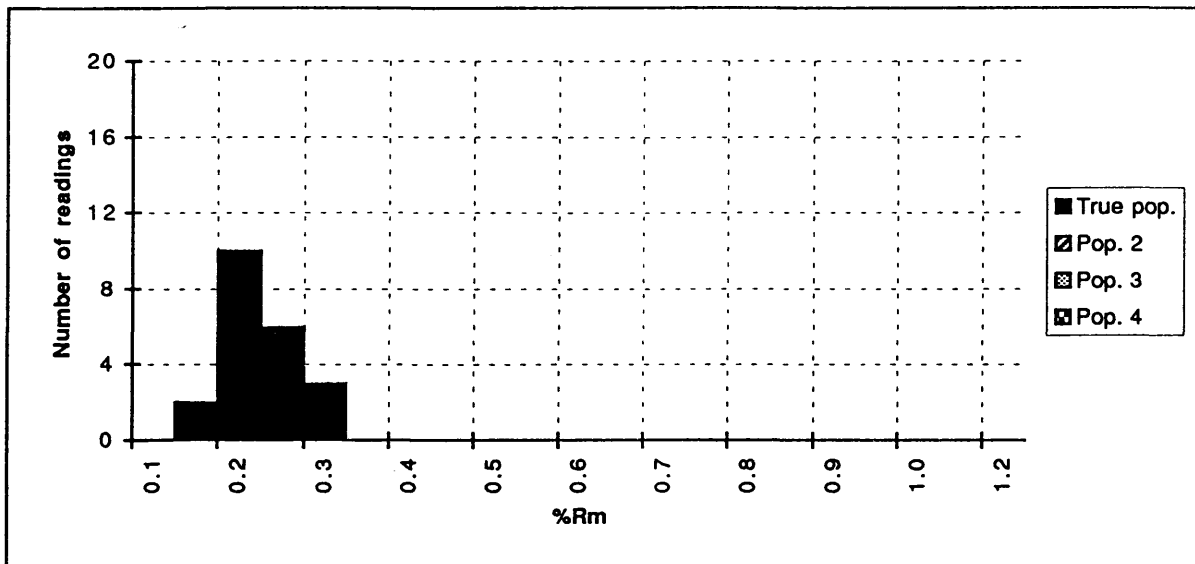
IFE no.	980219	%Rm readings	True pop.	Pop. 2	Pop. 3	Pop. 4
Well	6204/10-2	Mean±std.dev.	0.26±0.04			
Depth, mRKB	790	Individual	0.19			
Sample type	DC	measurements	0.20			
Lithology	CLYST/SST	3	0.21			
Preparation	HF	4	0.23			
Date of analysis	18.03.98	5	0.23			
		6	0.24			
Quality rating		7	0.24			
Abundance of vitrinite	O	8	0.24			
Identification of vitrinite	O	9	0.24			
Type of vitrinite	O	10	0.25			
Particle size	-	11	0.25			
Particle surface quality	O	12	0.25			
Abundance of pyrite	+	13	0.26			
Average sample quality	M	14	0.26			
		15	0.26			
Legend to quality rating		16	0.27			
No effect on the readings	O	17	0.27			
Possibly too low readings	-	18	0.30			
Possibly too high readings	+	19	0.31			
Good quality	G	20	0.31			
Moderate quality	M	21	0.33			
Poor quality	P	22				
Not vitrinite	X	23				
Mud additive	A	24				
		25				
Comments		26				
		27				
		28				
		29				
		30				

Vitrinite reflectance sample data sheet



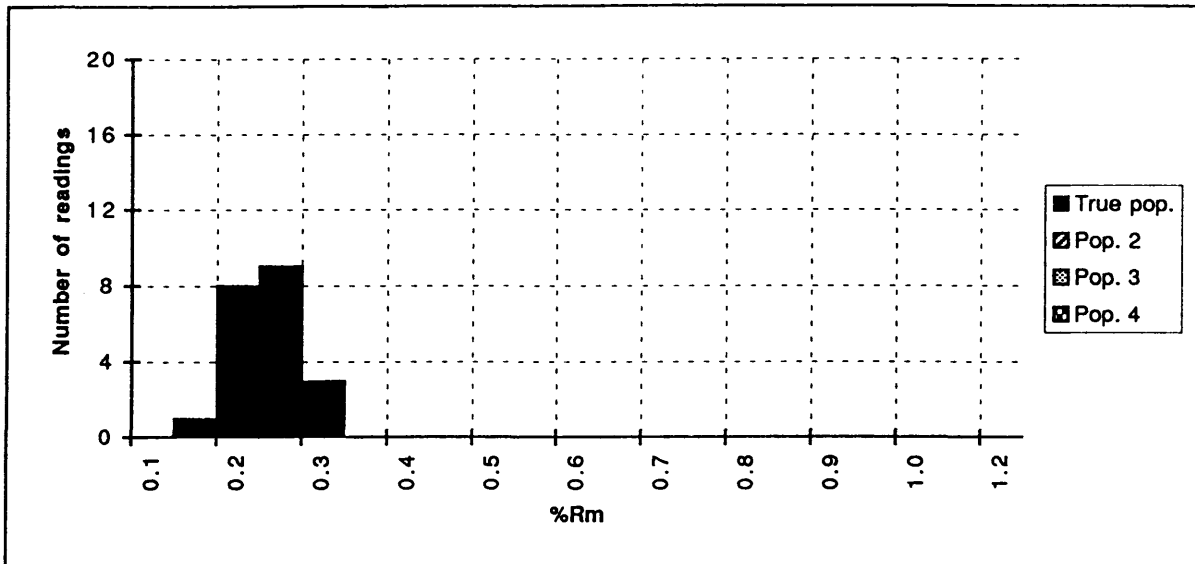
IFE no.	980220	%Rm readings	True pop.	Pop. 2	Pop. 3	Pop. 4
Well	6204/10-2	Mean±std.dev.	0.24±0.03			
Depth, mRKB	860	Individual	0.17			
Sample type	DC	measurements	0.19			
Lithology	CLYST/SST	3	0.21			
Preparation	HF	4	0.22			
Date of analysis	18.03.98	5	0.23			
		6	0.23			
Quality rating		7	0.24			
Abundance of vitrinite	O	8	0.24			
Identification of vitrinite	O	9	0.24			
Type of vitrinite	O	10	0.24			
Particle size	-	11	0.25			
Particle surface quality	O	12	0.25			
Abundance of pyrite	+	13	0.25			
Average sample quality	M	14	0.25			
		15	0.26			
Legend to quality rating		16	0.26			
No effect on the readings	O	17	0.26			
Possibly too low readings	-	18	0.26			
Possibly too high readings	+	19	0.26			
Good quality	G	20	0.26			
Moderate quality	M	21	0.27			
Poor quality	P	22				
Not vitrinite	X	23				
Mud additive	A	24				
		25				
Comments		26				
		27				
		28				
		29				
		30				

Vitrinite reflectance sample data sheet



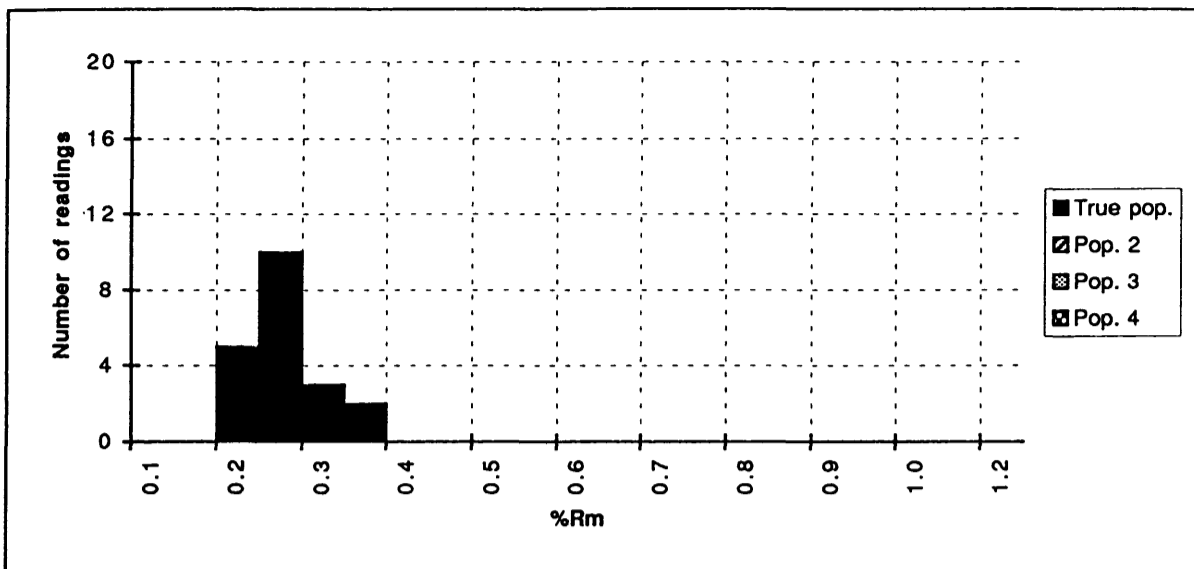
IFE no.	980221	%Rm readings	True pop.	Pop. 2	Pop. 3	Pop. 4
Well	6204/10-2	Mean±std.dev.	0.25±0.04			
Depth, mRKB	980	Individual	0.18			
Sample type	DC	measurements	0.19			
Lithology	CLYST/SST	3	0.20			
Preparation	HF	4	0.20			
Date of analysis	18.03.98	5	0.20			
		6	0.21			
Quality rating		7	0.21			
Abundance of vitrinite	O	8	0.22			
Identification of vitrinite	O	9	0.22			
Type of vitrinite	O	10	0.23			
Particle size	-	11	0.24			
Particle surface quality	O	12	0.25			
Abundance of pyrite	+	13	0.28			
Average sample quality	M	14	0.28			
		15	0.28			
Legend to quality rating		16	0.29			
No effect on the readings	O	17	0.29			
Possibly too low readings	-	18	0.29			
Possibly too high readings	+	19	0.30			
Good quality	G	20	0.30			
Moderate quality	M	21	0.32			
Poor quality	P	22				
Not vitrinite	X	23				
Mud additive	A	24				
		25				
Comments		26				
		27				
		28				
		29				
		30				

Vitrinite reflectance sample data sheet



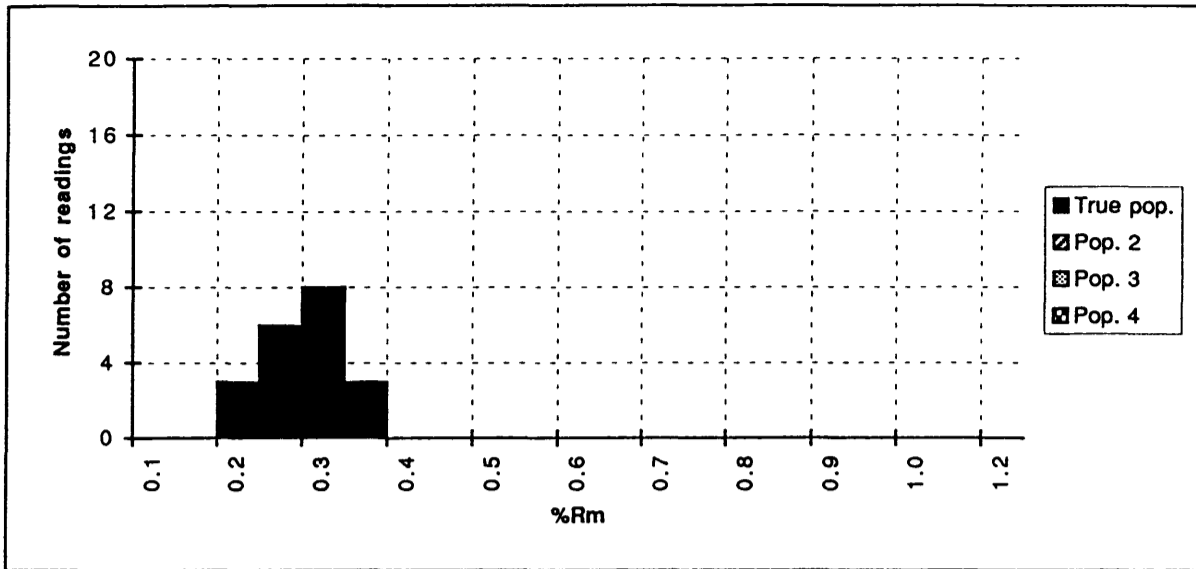
IFE no.	980222	%Rm readings	True pop.	Pop. 2	Pop. 3	Pop. 4
Well	6204/10-2R	Mean±std.dev.	0.25±0.03			
Depth, mRKB	1090	Individual	0.17			
Sample type	DC	measurements	0.21			
Lithology	CLYST/SST	3	0.21			
Preparation	HF	4	0.22			
Date of analysis	20.03.98	5	0.22			
		6	0.23			
Quality rating		7	0.23			
Abundance of vitrinite	O	8	0.23			
Identification of vitrinite	O	9	0.23			
Type of vitrinite	O	10	0.25			
Particle size	-	11	0.25			
Particle surface quality	-	12	0.26			
Abundance of pyrite	+	13	0.26			
Average sample quality	M	14	0.26			
		15	0.26			
Legend to quality rating		16	0.26			
No effect on the readings	O	17	0.27			
Possibly too low readings	-	18	0.29			
Possibly too high readings	+	19	0.30			
Good quality	G	20	0.30			
Moderate quality	M	21	0.31			
Poor quality	P	22				
Not vitrinite	X	23				
Mud additive	A	24				
		25				
Comments		26				
		27				
		28				
		29				
		30				

Vitrinite reflectance sample data sheet



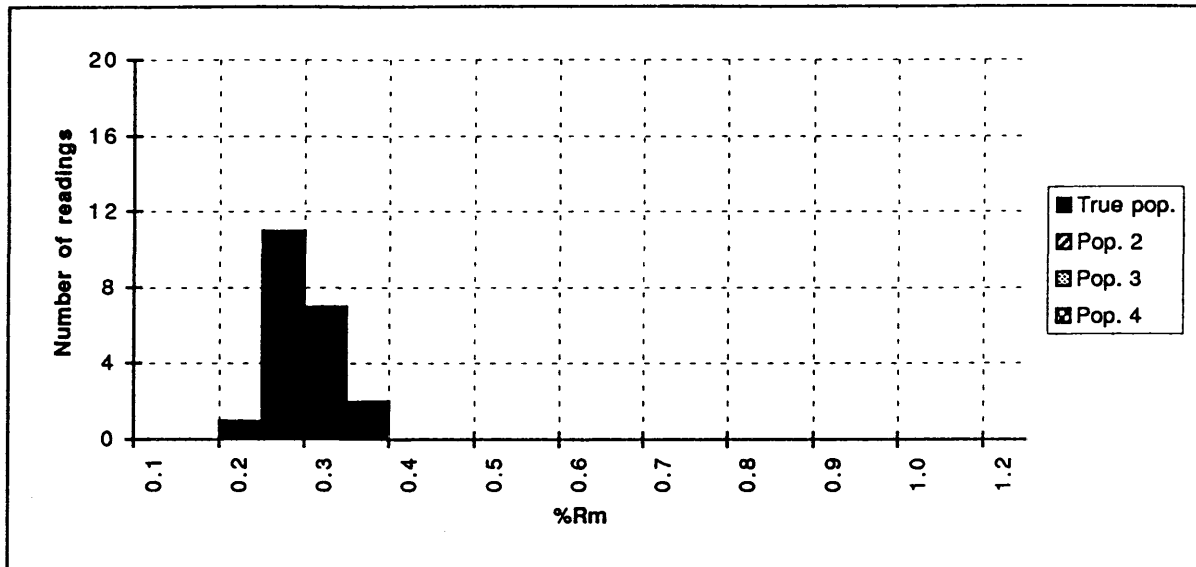
IFE no.	980223	%Rm readings	True pop.	Pop. 2	Pop. 3	Pop. 4
Well	6204/10-2R	Mean±std.dev.	0.28±0.04			
Depth, mRKB	1159	Individual	0.22			
Sample type	SWC	measurements	0.22			
Lithology	CLYST	3	0.23			
Preparation	HF	4	0.23			
Date of analysis	20.03.98	5	0.24			
		6	0.25			
Quality rating		7	0.25			
Abundance of vitrinite	O	8	0.26			
Identification of vitrinite	O	9	0.26			
Type of vitrinite	O	10	0.27			
Particle size	-	11	0.27			
Particle surface quality	-	12	0.27			
Abundance of pyrite	+	13	0.27			
Average sample quality	P	14	0.28			
		15	0.28			
Legend to quality rating		16	0.31			
No effect on the readings	O	17	0.31			
Possibly too low readings	-	18	0.32			
Possibly too high readings	+	19	0.35			
Good quality	G	20	0.39			
Moderate quality	M	21				
Poor quality	P	22				
Not vitrinite	X	23				
Mud additive	A	24				
		25				
Comments		26				
		27				
		28				
		29				
		30				

Vitrinite reflectance sample data sheet



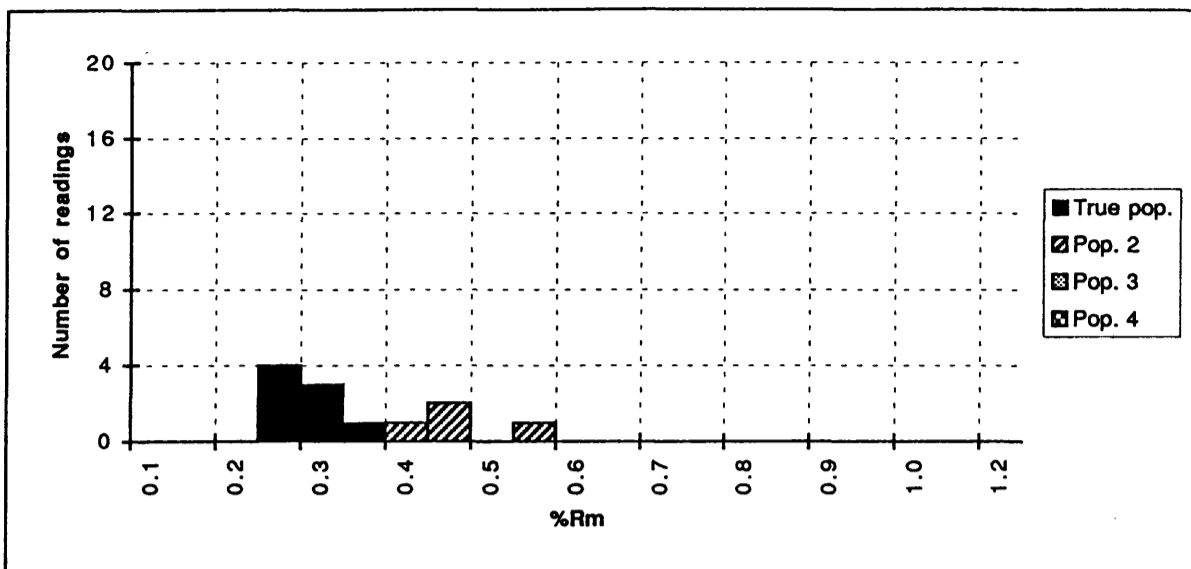
IFE no.	980224	%Rm readings	True pop.	Pop. 2	Pop. 3	Pop. 4
Well	6204/10-2R	Mean±std.dev.	0.30±0.04			
Depth, mRKB	1203	Individual	0.21			
Sample type	SWC	measurements	0.23			
Lithology	CLYST	3	0.24			
Preparation	HF	4	0.26			
Date of analysis	20.03.98	5	0.26			
		6	0.27			
Quality rating		7	0.28			
Abundance of vitrinite	O	8	0.29			
Identification of vitrinite	O	9	0.29			
Type of vitrinite	O	10	0.31			
Particle size	-	11	0.31			
Particle surface quality	-	12	0.31			
Abundance of pyrite	+	13	0.32			
Average sample quality	M	14	0.32			
		15	0.32			
Legend to quality rating		16	0.33			
No effect on the readings	O	17	0.33			
Possibly too low readings	-	18	0.35			
Possibly too high readings	+	19	0.35			
Good quality	G	20	0.38			
Moderate quality	M	21				
Poor quality	P	22				
Not vitrinite	X	23				
Mud additive	A	24				
		25				
Comments		26				
		27				
		28				
		29				
		30				

Vitrinite reflectance sample data sheet



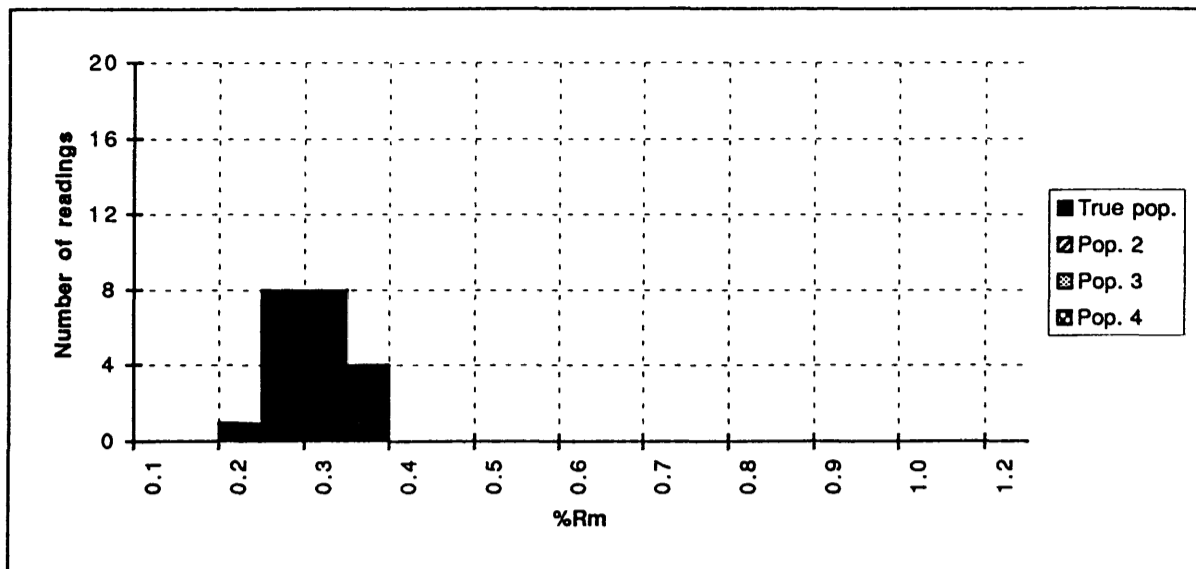
980225		%Rm readings	True pop.	Pop. 2	Pop. 3	Pop. 4
IFE no.	980225	Mean±std.dev.	0.29±0.03			
Well	6204/10-2R	Individual	0.23			
Depth, mRKB	1268	measurements	0.25			
Sample type	SWC	3	0.26			
Lithology	CLYST	4	0.26			
Preparation	HF	5	0.26			
Date of analysis	20.03.98	6	0.26			
		7	0.27			
Quality rating		8	0.27			
Abundance of vitrinite	O	9	0.27			
Identification of vitrinite	O	10	0.27			
Type of vitrinite	O	11	0.27			
Particle size	-	12	0.28			
Particle surface quality	-	13	0.30			
Abundance of pyrite	+	14	0.30			
Average sample quality	M	15	0.30			
		16	0.30			
Legend to quality rating		17	0.32			
No effect on the readings	O	18	0.32			
Possibly too low readings	-	19	0.34			
Possibly too high readings	+	20	0.35			
Good quality	G	21	0.35			
Moderate quality	M	22				
Poor quality	P	23				
Not vitrinite	X	24				
Mud additive	A	25				
		26				
Comments		27				
		28				
		29				
		30				

Vitrinite reflectance sample data sheet



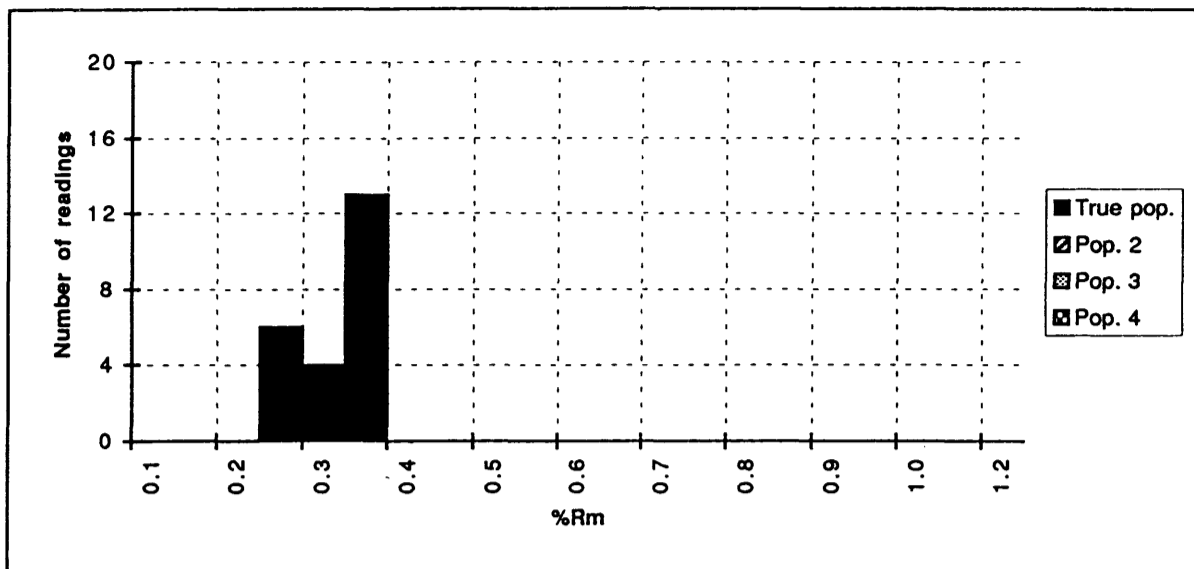
IFE no.	980226	%Rm readings	True pop.	Pop. 2	Pop. 3	Pop. 4
Well	6204/10-2R	Mean±std.dev.	0.31±0.04	0.50±0.07		
Depth, mRKB	1304	Individual	0.26	0.41		
Sample type	SWC	measurements	0.27	0.49		
Lithology	CLYST	3	0.27	0.49		
Preparation	HF	4	0.29	0.58		
Date of analysis	20.03.98	5	0.31			
		6	0.31			
Quality rating		7	0.34			
Abundance of vitrinite	-	8	0.37			
Identification of vitrinite	O	9				
Type of vitrinite	O	10				
Particle size	-	11				
Particle surface quality	-	12				
Abundance of pyrite	+	13				
Average sample quality	P	14				
		15				
Legend to quality rating		16				
No effect on the readings	O	17				
Possibly too low readings	-	18				
Possibly too high readings	+	19				
Good quality	G	20				
Moderate quality	M	21				
Poor quality	P	22				
Not vitrinite	X	23				
Mud additive	A	24				
		25				
Comments		26				
		27				
		28				
		29				
		30				

Vitrinite reflectance sample data sheet



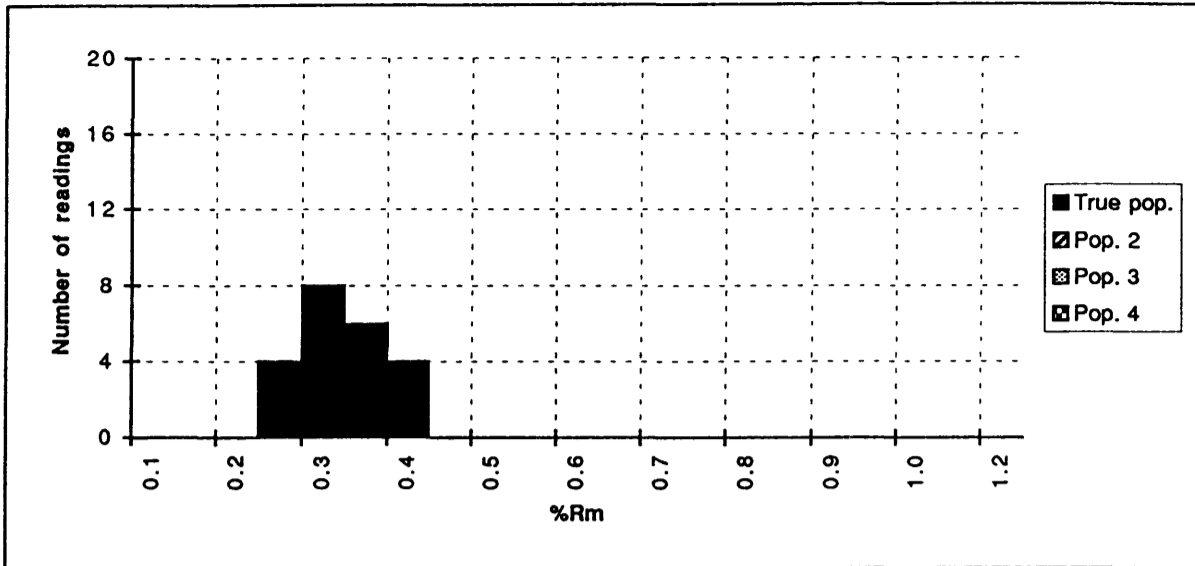
980227		%Rm readings	True pop.	Pop. 2	Pop. 3	Pop. 4
IFE no.	980227	Mean±std.dev.	0.31±0.04			
Well	6204/10-2R	Individual	0.22			
Depth, mRKB	1355	measurements	0.26			
Sample type	SWC	3	0.26			
Lithology	CLYST	4	0.27			
Preparation	HF	5	0.28			
Date of analysis	25.03.98	6	0.28			
Quality rating		7	0.28			
Abundance of vitrinite	O	8	0.29			
Identification of vitrinite	O	9	0.29			
Type of vitrinite	O	10	0.30			
Particle size	-	11	0.30			
Particle surface quality	O	12	0.31			
Abundance of pyrite	+	13	0.31			
Average sample quality	M	14	0.31			
		15	0.32			
Legend to quality rating		16	0.32			
No effect on the readings	O	17	0.32			
Possibly too low readings	-	18	0.36			
Possibly too high readings	+	19	0.36			
Good quality	G	20	0.37			
Moderate quality	M	21	0.38			
Poor quality	P	22				
Not vitrinite	X	23				
Mud additive	A	24				
		25				
Comments		26				
		27				
		28				
		29				
		30				

Vitrinite reflectance sample data sheet



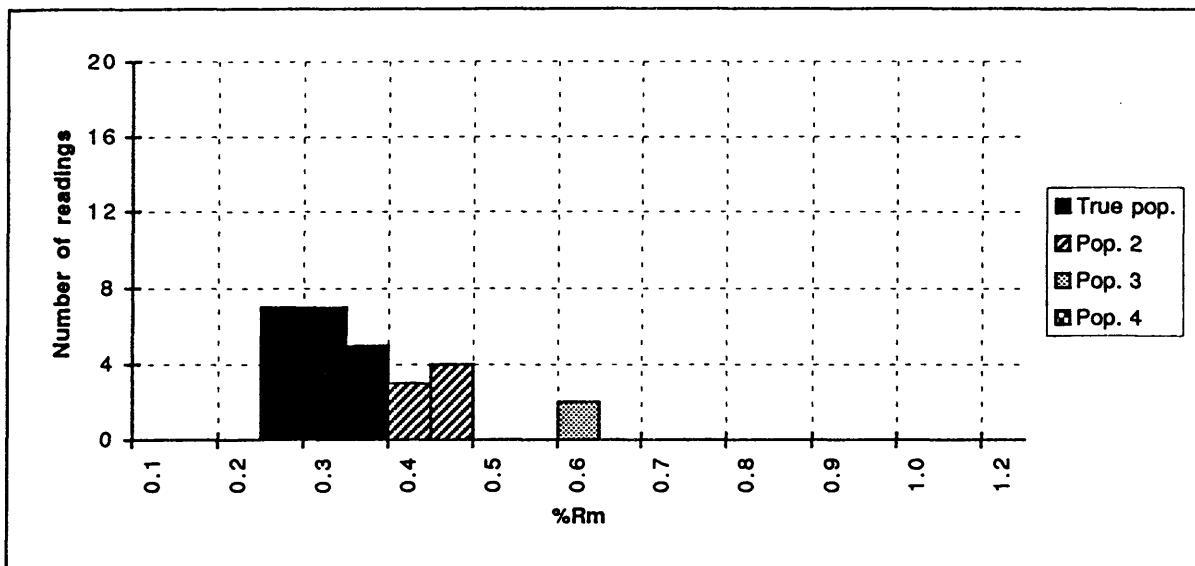
IFE no.	980228	%Rm readings	True pop.	Pop. 2	Pop. 3	Pop. 4
Well	6204/10-2R	Mean±std.dev.	0.34±0.05			
Depth, mRKB	1435	Individual	0.25			
Sample type	SWC	measurements	0.27			
Lithology	CLYST	3	0.27			
Preparation	HF	4	0.28			
Date of analysis	25.03.98	5	0.28			
		6	0.29			
Quality rating		7	0.31			
Abundance of vitrinite	O	8	0.33			
Identification of vitrinite	O	9	0.33			
Type of vitrinite	O	10	0.34			
Particle size	-	11	0.35			
Particle surface quality	O	12	0.36			
Abundance of pyrite	+	13	0.37			
Average sample quality	M	14	0.37			
		15	0.37			
Legend to quality rating		16	0.37			
No effect on the readings	O	17	0.37			
Possibly too low readings	-	18	0.38			
Possibly too high readings	+	19	0.38			
Good quality	G	20	0.38			
Moderate quality	M	21	0.38			
Poor quality	P	22	0.39			
Not vitrinite	X	23	0.40			
Mud additive	A	24				
		25				
Comments		26				
		27				
		28				
		29				
		30				

Vitrinite reflectance sample data sheet



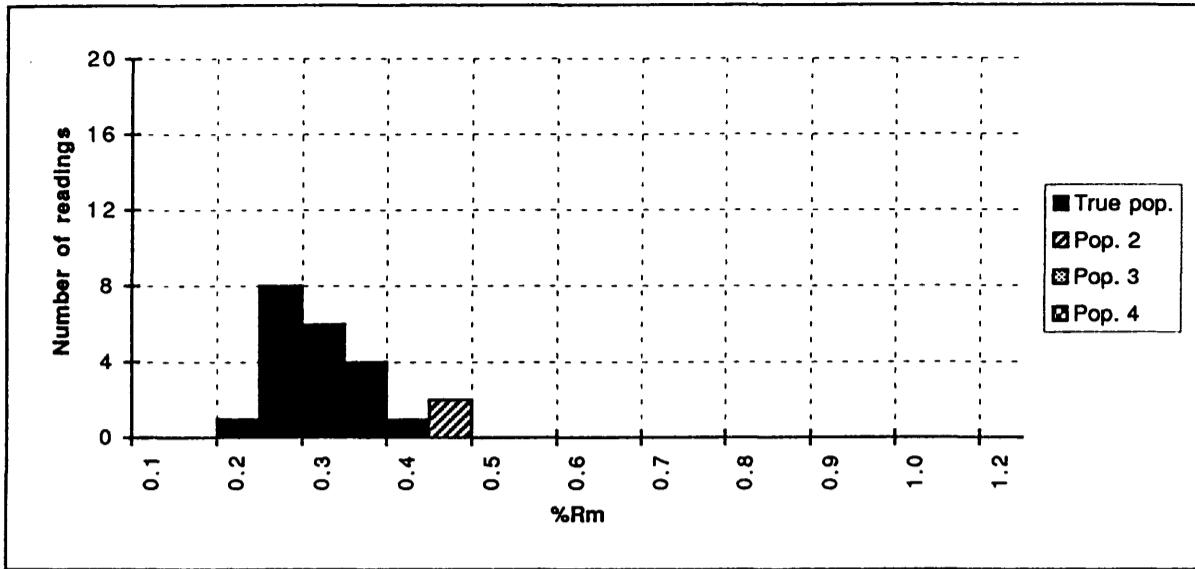
IFE no.	980229	%Rm readings	True pop.	Pop. 2	Pop. 3	Pop. 4
Well	6204/10-2R	Mean±std.dev.	0.35±0.04			
Depth, mRKB	1494	Individual	0.27			
Sample type	SWC	measurements	0.27			
Lithology	CLYST	3	0.28			
Preparation	HF	4	0.28			
Date of analysis	25.03.98	5	0.31			
		6	0.31			
Quality rating		7	0.32			
Abundance of vitrinite	O	8	0.33			
Identification of vitrinite	O	9	0.34			
Type of vitrinite	O	10	0.34			
Particle size	-	11	0.34			
Particle surface quality	O	12	0.34			
Abundance of pyrite	+	13	0.35			
Average sample quality	M	14	0.35			
		15	0.36			
Legend to quality rating		16	0.37			
No effect on the readings	O	17	0.37			
Possibly too low readings	-	18	0.38			
Possibly too high readings	+	19	0.40			
Good quality	G	20	0.40			
Moderate quality	M	21	0.41			
Poor quality	P	22	0.41			
Not vitrinite	X	23				
Mud additive	A	24				
		25				
Comments		26				
		27				
		28				
		29				
		30				

Vitrinite reflectance sample data sheet



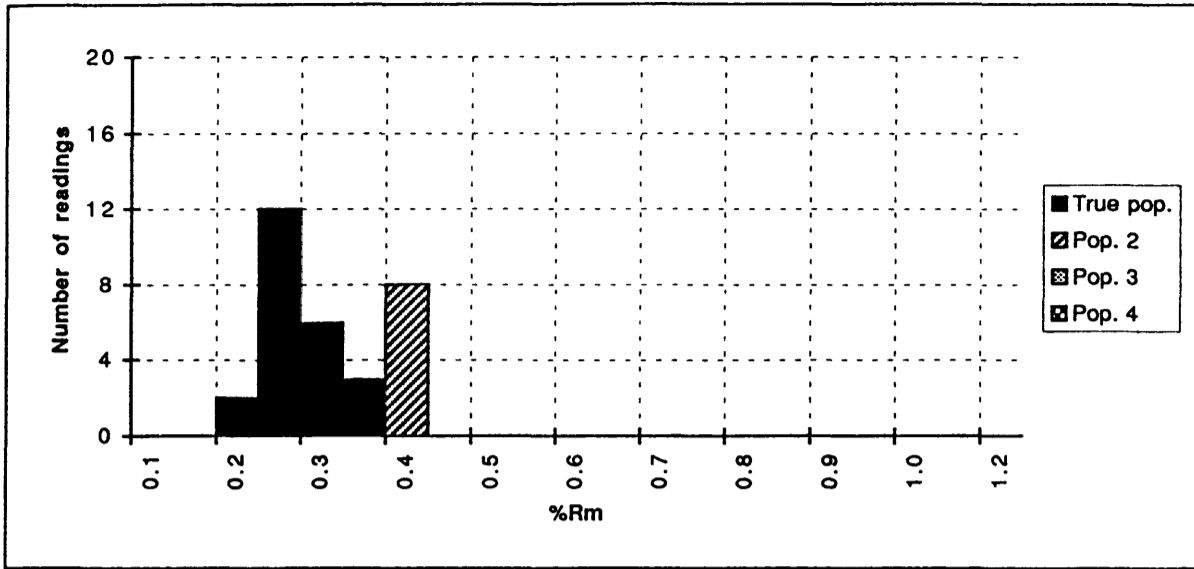
980230		%Rm readings	True pop.	Pop. 2	Pop. 3	Pop. 4
IFE no.	980230	Mean±std.dev.	0.32±0.04	0.44±0.03	0.64±0.01	
Well	6204/10-2R	Individual	0.26	0.41	0.63	
Depth, mRKB	1532	measurements	0.27	0.41	0.64	
Sample type	SWC	3	0.27	0.41		
Lithology	CLYST	4	0.28	0.45		
Preparation	HF	5	0.29	0.45		
Date of analysis	26.03.98	6	0.29	0.46		
Quality rating		7	0.29	0.46		
Abundance of vitrinite	O	8	0.30			
Identification of vitrinite	O	9	0.31			
Type of vitrinite	O	10	0.31			
Particle size	-	11	0.31			
Particle surface quality	-	12	0.32			
Abundance of pyrite	+	13	0.33			
Average sample quality	M	14	0.34			
		15	0.35			
Legend to quality rating		16	0.36			
No effect on the readings	O	17	0.37			
Possibly too low readings	-	18	0.38			
Possibly too high readings	+	19	0.39			
Good quality	G	20				
Moderate quality	M	21				
Poor quality	P	22				
Not vitrinite	X	23				
Mud additive	A	24				
		25				
Comments		26				
		27				
		28				
		29				
		30				

Vitrinite reflectance sample data sheet



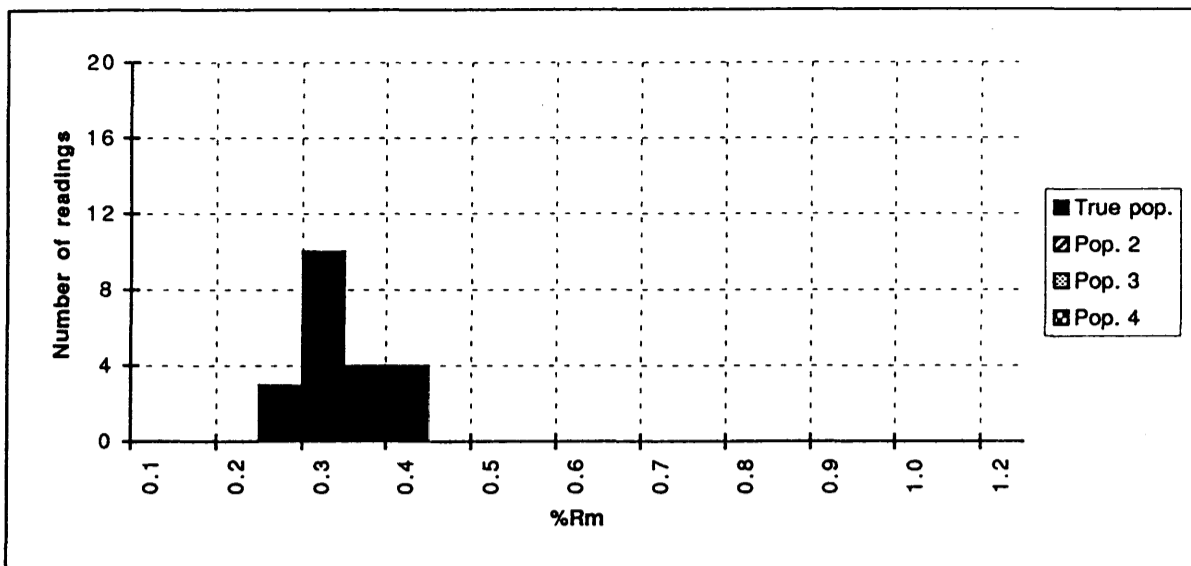
IFE no.	980231	%Rm readings	True pop.	Pop. 2	Pop. 3	Pop. 4
Well	6204/10-2R	Mean±std.dev.	0.32±0.05	0.47±0.00		
Depth, mRKB	1607	Individual	0.24	0.47		
Sample type	SWC	measurements	0.26	0.48		
Lithology	CLYST	3	0.26			
Preparation	HF	4	0.27			
Date of analysis	26.03.98	5	0.28			
		6	0.28			
Quality rating		7	0.28			
Abundance of vitrinite	O	8	0.28			
Identification of vitrinite	O	9	0.29			
Type of vitrinite	O	10	0.31			
Particle size	-	11	0.31			
Particle surface quality	-	12	0.32			
Abundance of pyrite	+	13	0.34			
Average sample quality	M	14	0.34			
		15	0.34			
Legend to quality rating		16	0.35			
No effect on the readings	O	17	0.36			
Possibly too low readings	-	18	0.36			
Possibly too high readings	+	19	0.39			
Good quality	G	20	0.42			
Moderate quality	M	21				
Poor quality	P	22				
Not vitrinite	X	23				
Mud additive	A	24				
		25				
Comments		26				
		27				
		28				
		29				
		30				

Vitrinite reflectance sample data sheet



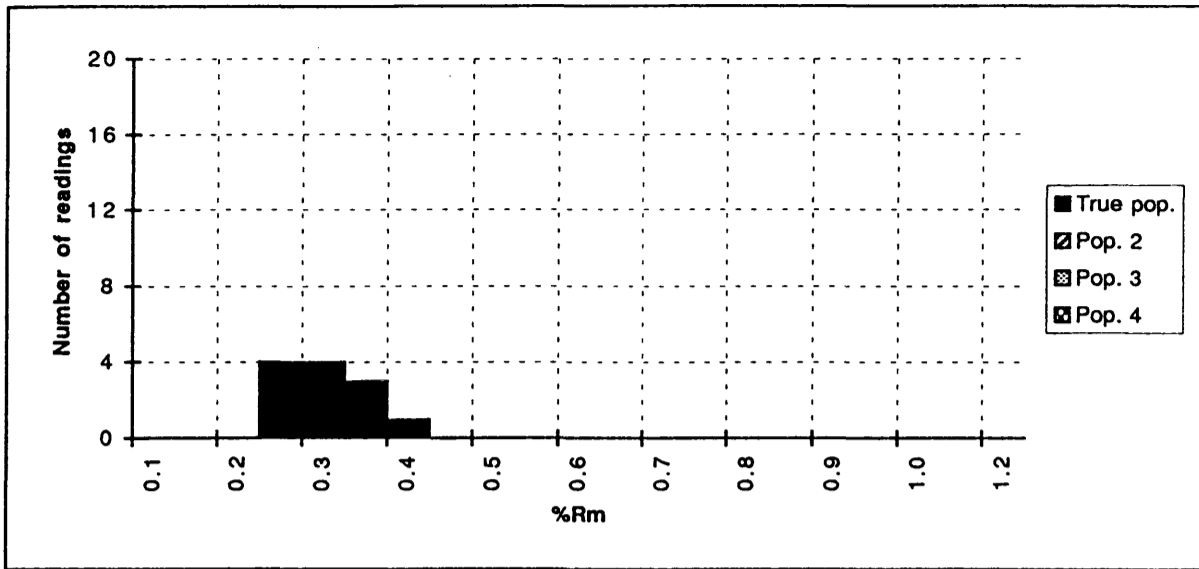
980232		%Rm readings	True pop.	Pop. 2	Pop. 3	Pop. 4
IFE no.	980232	Mean±std.dev.	0.30±0.04	0.42±0.01		
Well	6204/10-2R	Individual	0.24	0.40		
Depth, mRKB	1687	measurements	0.24	0.41		
Sample type	SWC	3	0.25	0.41		
Lithology	CLYST	4	0.25	0.41		
Preparation	HF	5	0.25	0.41		
Date of analysis	26.03.98	6	0.26	0.42		
Quality rating		7	0.27	0.43		
Abundance of vitrinite	O	8	0.27	0.44		
Identification of vitrinite	O	9	0.27			
Type of vitrinite	O	10	0.27			
Particle size	-	11	0.28			
Particle surface quality	-	12	0.28			
Abundance of pyrite	+	13	0.29			
Average sample quality	M	14	0.29			
		15	0.30			
Legend to quality rating		16	0.30			
No effect on the readings	O	17	0.31			
Possibly too low readings	-	18	0.31			
Possibly too high readings	+	19	0.33			
Good quality	G	20	0.34			
Moderate quality	M	21	0.35			
Poor quality	P	22	0.38			
Not vitrinite	X	23	0.39			
Mud additive	A	24				
		25				
Comments		26				
		27				
		28				
		29				
		30				

Vitrinite reflectance sample data sheet



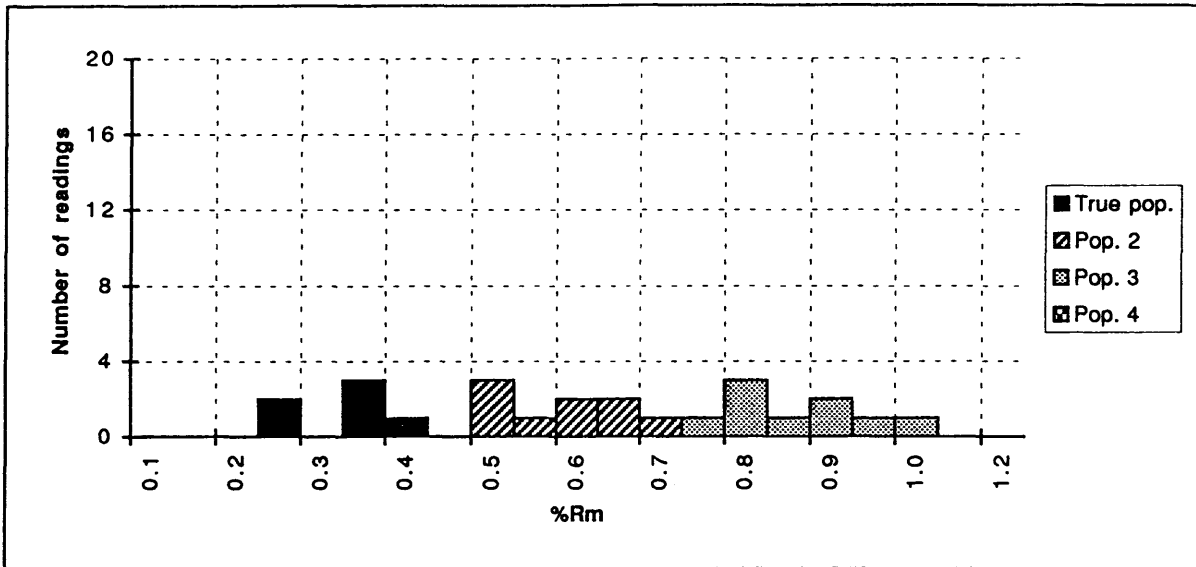
IFE no.	980233	%Rm readings	True pop.	Pop. 2	Pop. 3	Pop. 4
Well	6204/10-2R	Mean±std.dev.	0.35±0.05			
Depth, mRKB	1744	Individual	0.27			
Sample type	SWC	measurements	0.28			
Lithology	CLYST	3	0.29			
Preparation	HF	4	0.30			
Date of analysis	26.03.98	5	0.31			
		6	0.31			
Quality rating		7	0.32			
Abundance of vitrinite	O	8	0.33			
Identification of vitrinite	O	9	0.33			
Type of vitrinite	O	10	0.33			
Particle size	-	11	0.33			
Particle surface quality	-	12	0.33			
Abundance of pyrite	+	13	0.34			
Average sample quality	M	14	0.35			
		15	0.39			
Legend to quality rating		16	0.39			
No effect on the readings	O	17	0.39			
Possibly too low readings	-	18	0.40			
Possibly too high readings	+	19	0.40			
Good quality	G	20	0.40			
Moderate quality	M	21	0.44			
Poor quality	P	22				
Not vitrinite	X	23				
Mud additive	A	24				
		25				
Comments		26				
		27				
		28				
		29				
		30				

Vitrinite reflectance sample data sheet



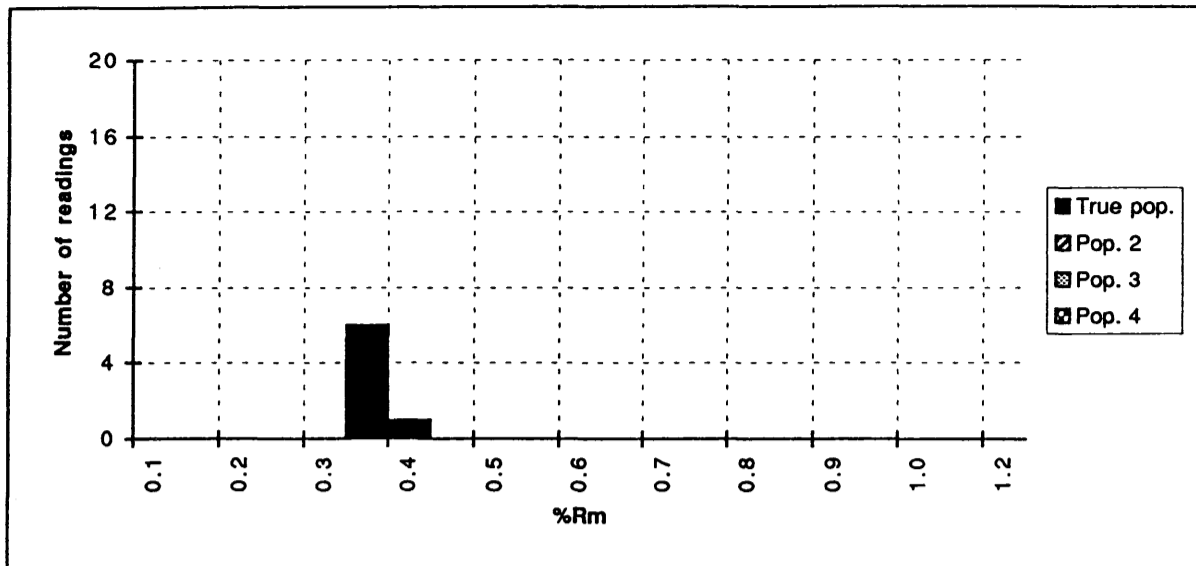
IFE no.	980234	%Rm readings	True pop.	Pop. 2	Pop. 3	Pop. 4
Well	6204/10-2R	Mean±std.dev.	0.33±0.05			
Depth, mRKB	1813	Individual	0.25			
Sample type	SWC	measurements	0.27			
Lithology	CLYST	3	0.29			
Preparation	HF	4	0.29			
Date of analysis	26.03.98	5	0.31			
		6	0.31			
Quality rating		7	0.31			
Abundance of vitrinite	-	8	0.33			
Identification of vitrinite	O	9	0.35			
Type of vitrinite	O	10	0.37			
Particle size	-	11	0.38			
Particle surface quality	-	12	0.41			
Abundance of pyrite	+	13				
Average sample quality	M	14				
		15				
Legend to quality rating		16				
No effect on the readings	O	17				
Possibly too low readings	-	18				
Possibly too high readings	+	19				
Good quality	G	20				
Moderate quality	M	21				
Poor quality	P	22				
Not vitrinite	X	23				
Mud additive	A	24				
		25				
Comments		26				
		27				
		28				
		29				
		30				

Vitrinite reflectance sample data sheet



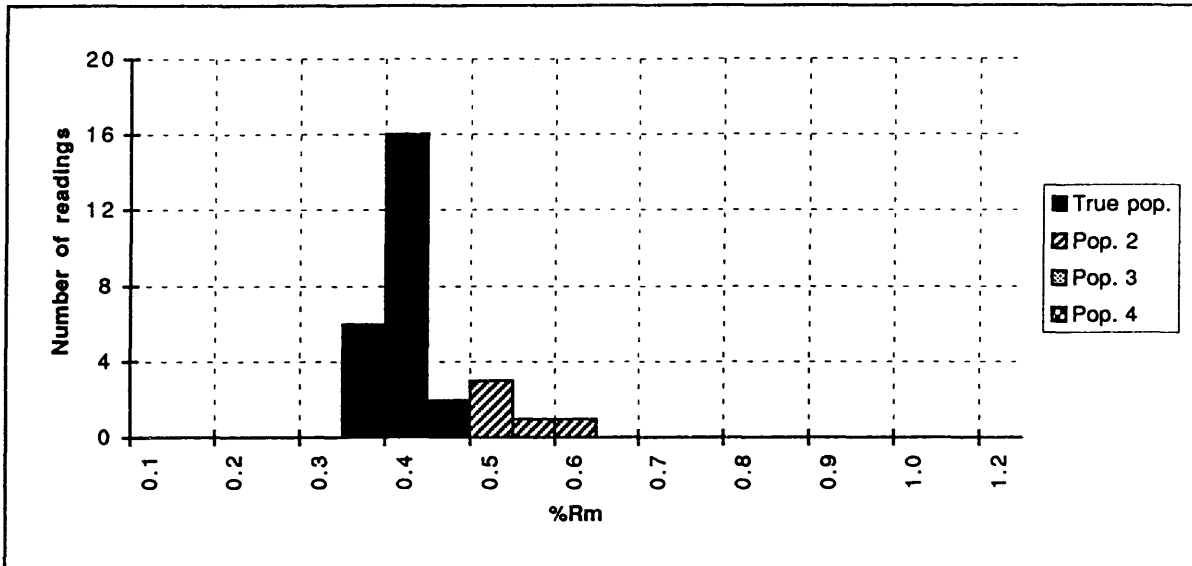
IFE no. 980235		%Rm readings	True pop.	Pop. 2	Pop. 3	Pop. 4
Well	6204/10-2R	Mean±std.dev.	0.35±0.05	0.61±0.07	0.88±0.09	
Depth, mRKB	1886.54	Individual	0.28	0.51	0.76	
Sample type	CORE	measurements	0.29	0.53	0.81	
Lithology	CLYST	3	0.35	0.53	0.82	
Preparation	bulk	4	0.36	0.59	0.84	
Date of analysis	26.03.98	5	0.38	0.61	0.87	
		6	0.42	0.63	0.91	
Quality rating		7		0.67	0.92	
Abundance of vitrinite	-	8		0.68	0.96	
Identification of vitrinite	O	9		0.70	1.04	
Type of vitrinite	O	10				
Particle size	-	11				
Particle surface quality	-	12				
Abundance of pyrite	O	13				
Average sample quality	P	14				
		15				
Legend to quality rating		16				
No effect on the readings	O	17				
Possibly too low readings	-	18				
Possibly too high readings	+	19				
Good quality	G	20				
Moderate quality	M	21				
Poor quality	P	22				
Not vitrinite	X	23				
Mud additive	A	24				
		25				
Comments		26				
		27				
		28				
		29				
		30				

Vitrinite reflectance sample data sheet



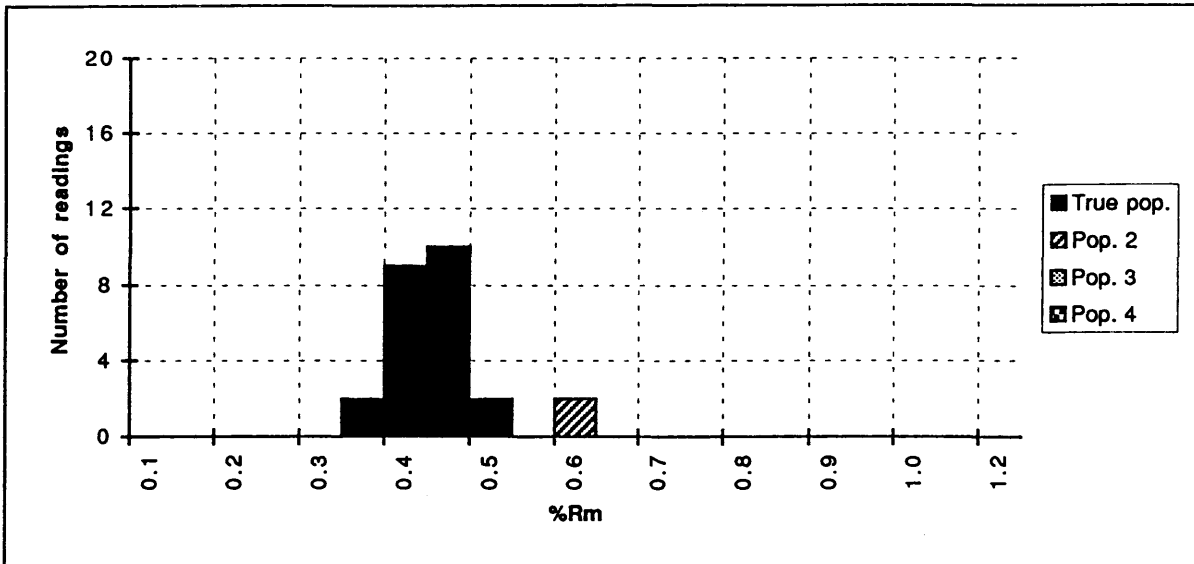
IFE no.	980236	%Rm readings	True pop.	Pop. 2	Pop. 3	Pop. 4
Well	6204/10-2R	Mean±std.dev.	0.39±0.02			
Depth, mRKB	1928	Individual	0.35			
Sample type	SWC	measurements	0.36			
Lithology	CLYST	3	0.38			
Preparation	HF	4	0.38			
Date of analysis	26.03.98	5	0.39			
		6	0.39			
Quality rating		7	0.42			
Abundance of vitrinite	-	8				
Identification of vitrinite	O	9				
Type of vitrinite	O	10				
Particle size	-	11				
Particle surface quality	-	12				
Abundance of pyrite	O	13				
Average sample quality	P	14				
		15				
Legend to quality rating		16				
No effect on the readings	O	17				
Possibly too low readings	-	18				
Possibly too high readings	+	19				
Good quality	G	20				
Moderate quality	M	21				
Poor quality	P	22				
Not vitrinite	X	23				
Mud additive	A	24				
		25				
Comments		26				
		27				
		28				
		29				
		30				

Vitrinite reflectance sample data sheet



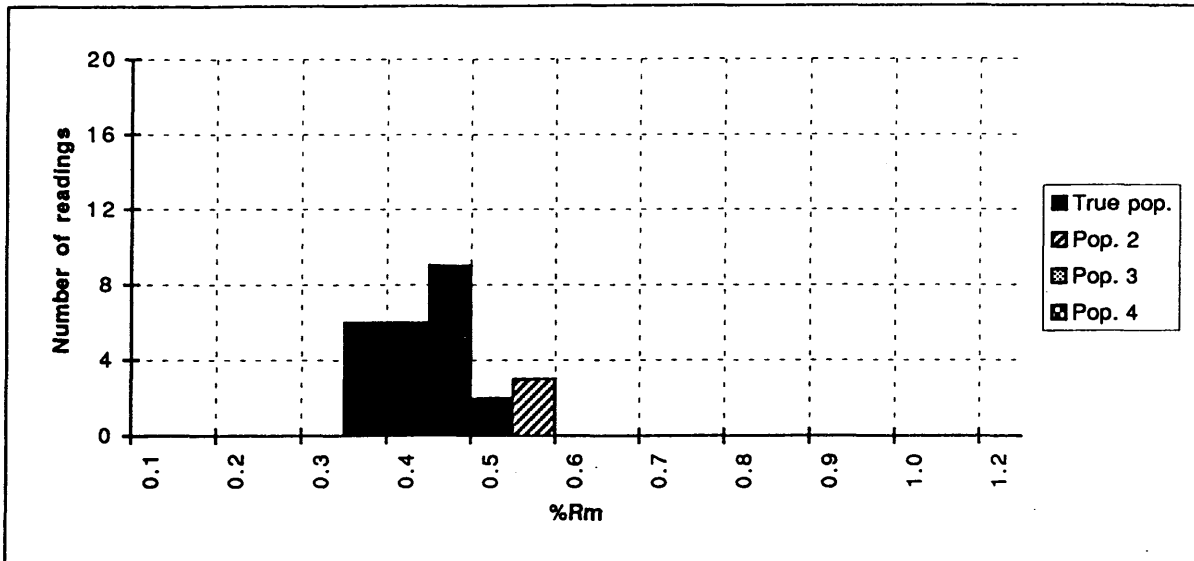
IFE no.	980237	%Rm readings	True pop.	Pop. 2	Pop. 3	Pop. 4
Well	6204/10-2R	Mean±std.dev.	0.42±0.03	0.55±0.03		
Depth, mRKB	1959.9	Individual	0.35	0.51		
Sample type	COPE	measurements	0.36	0.52		
Lithology	CLYST	3	0.37	0.53		
Preparation	bulk	4	0.38	0.56		
Date of analysis	26.03.98	5	0.38	0.60		
		6	0.38			
Quality rating		7	0.40			
Abundance of vitrinite	O	8	0.40			
Identification of vitrinite	O	9	0.40			
Type of vitrinite	O	10	0.40			
Particle size	-	11	0.40			
Particle surface quality	O	12	0.41			
Abundance of pyrite	O	13	0.41			
Average sample quality	M	14	0.42			
		15	0.42			
Legend to quality rating		16	0.43			
No effect on the readings	O	17	0.43			
Possibly too low readings	-	18	0.44			
Possibly too high readings	+	19	0.44			
Good quality	G	20	0.44			
Moderate quality	M	21	0.44			
Poor quality	P	22	0.44			
Not vitrinite	X	23	0.45			
Mud additive	A	24	0.48			
		25				
Comments		26				
		27				
		28				
		29				
		30				

Vitrinite reflectance sample data sheet



IFE no. 980238		%Rm readings	True pop.	Pop. 2	Pop. 3	Pop. 4
Well	6204/10-2R	Mean±std.dev.	0.45±0.04	0.62±0.01		
Depth, mRKB	2020	Individual	0.38	0.61		
Sample type	SWC	measurements	0.39	0.63		
Lithology	CLYST	3	0.40			
Preparation	HF	4	0.40			
Date of analysis	27.03.98	5	0.41			
		6	0.41			
Quality rating		7	0.41			
Abundance of vitrinite	O	8	0.42			
Identification of vitrinite	O	9	0.42			
Type of vitrinite	O	10	0.43			
Particle size	-	11	0.44			
Particle surface quality	-	12	0.45			
Abundance of pyrite	+	13	0.46			
Average sample quality	M	14	0.46			
		15	0.47			
Legend to quality rating		16	0.47			
No effect on the readings	O	17	0.47			
Possibly too low readings	-	18	0.47			
Possibly too high readings	+	19	0.48			
Good quality	G	20	0.48			
Moderate quality	M	21	0.49			
Poor quality	P	22	0.50			
Not vitrinite	X	23	0.51			
Mud additive	A	24				
		25				
Comments		26				
		27				
		28				
		29				
		30				

Vitrinite reflectance sample data sheet



980239		%Rm readings	True pop.	Pop. 2	Pop. 3	Pop. 4
IFE no.	980239	Mean±std.dev.	0.44±0.05	0.57±0.01		
Well	6204/10-2R	Individual	0.35	0.56		
Depth, mRKB	2065	measurements	0.36	0.57		
Sample type	SWC	3	0.36	0.57		
Lithology	CLYST	4	0.37			
Preparation	HF	5	0.37			
Date of analysis	27.03.98	6	0.38			
Quality rating		7	0.41			
Abundance of vitrinite	O	8	0.42			
Identification of vitrinite	O	9	0.42			
Type of vitrinite	O	10	0.42			
Particle size	-	11	0.43			
Particle surface quality	-	12	0.43			
Abundance of pyrite	+	13	0.47			
Average sample quality	M	14	0.47			
		15	0.47			
Legend to quality rating		16	0.48			
No effect on the readings	O	17	0.48			
Possibly too low readings	-	18	0.48			
Possibly too high readings	+	19	0.48			
Good quality	G	20	0.49			
Moderate quality	M	21	0.49			
Poor quality	P	22	0.50			
Not vitrinite	X	23	0.51			
Mud additive	A	24				
		25				
Comments		26				
		27				
		28				
		29				
		30				