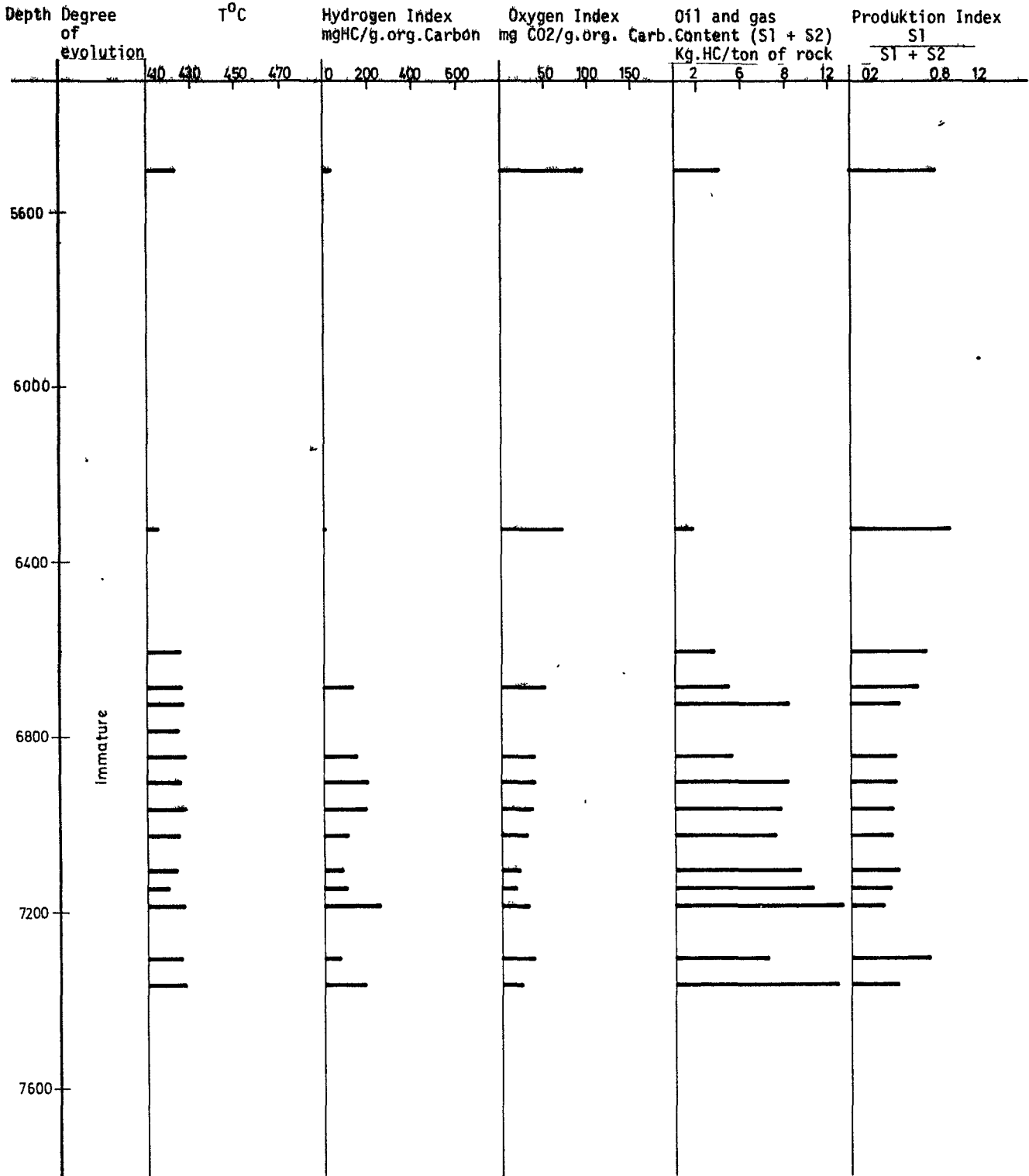
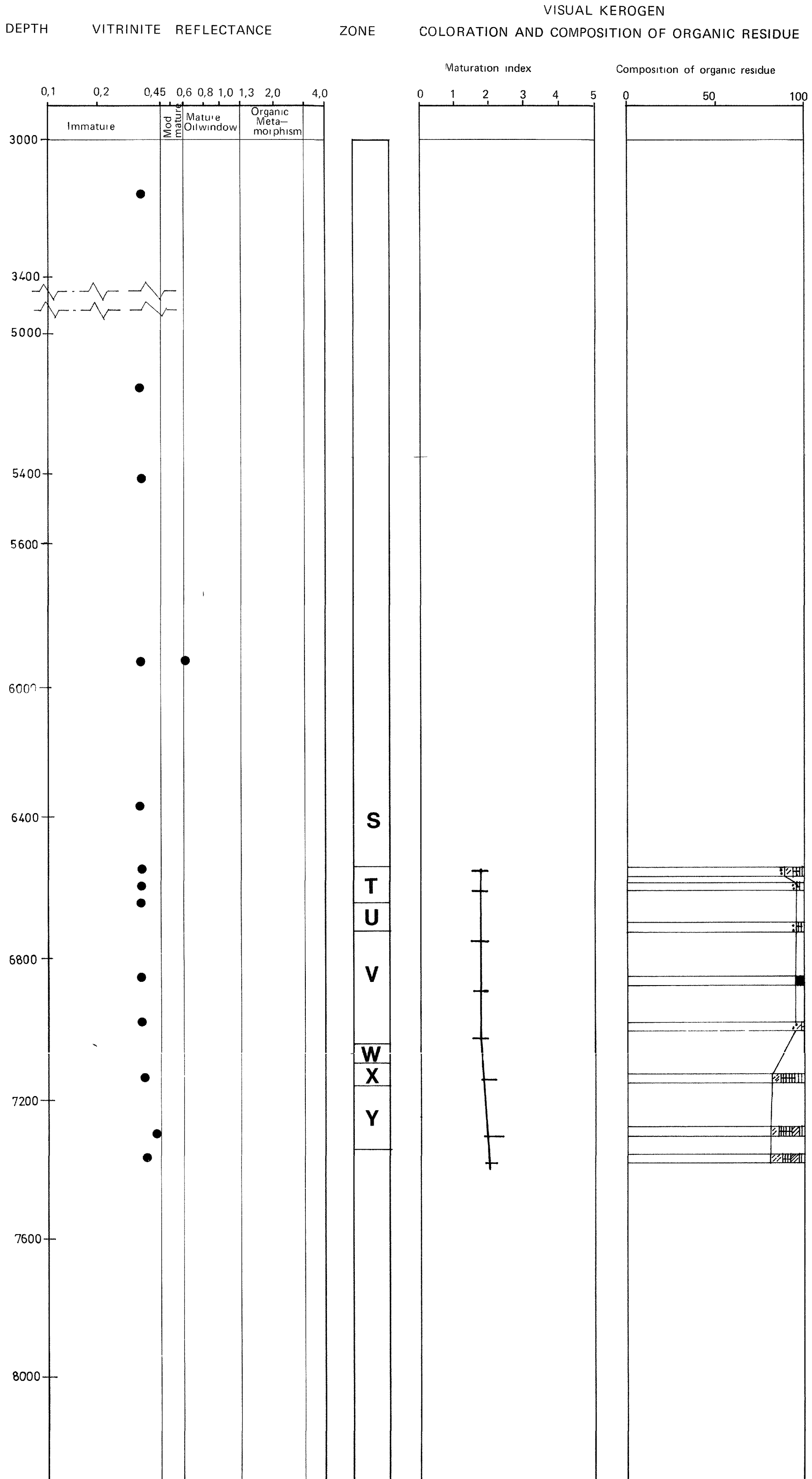


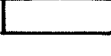



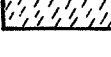

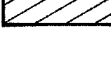
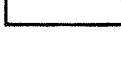
17/12-2

ROCK EVAL PYROLYSIS

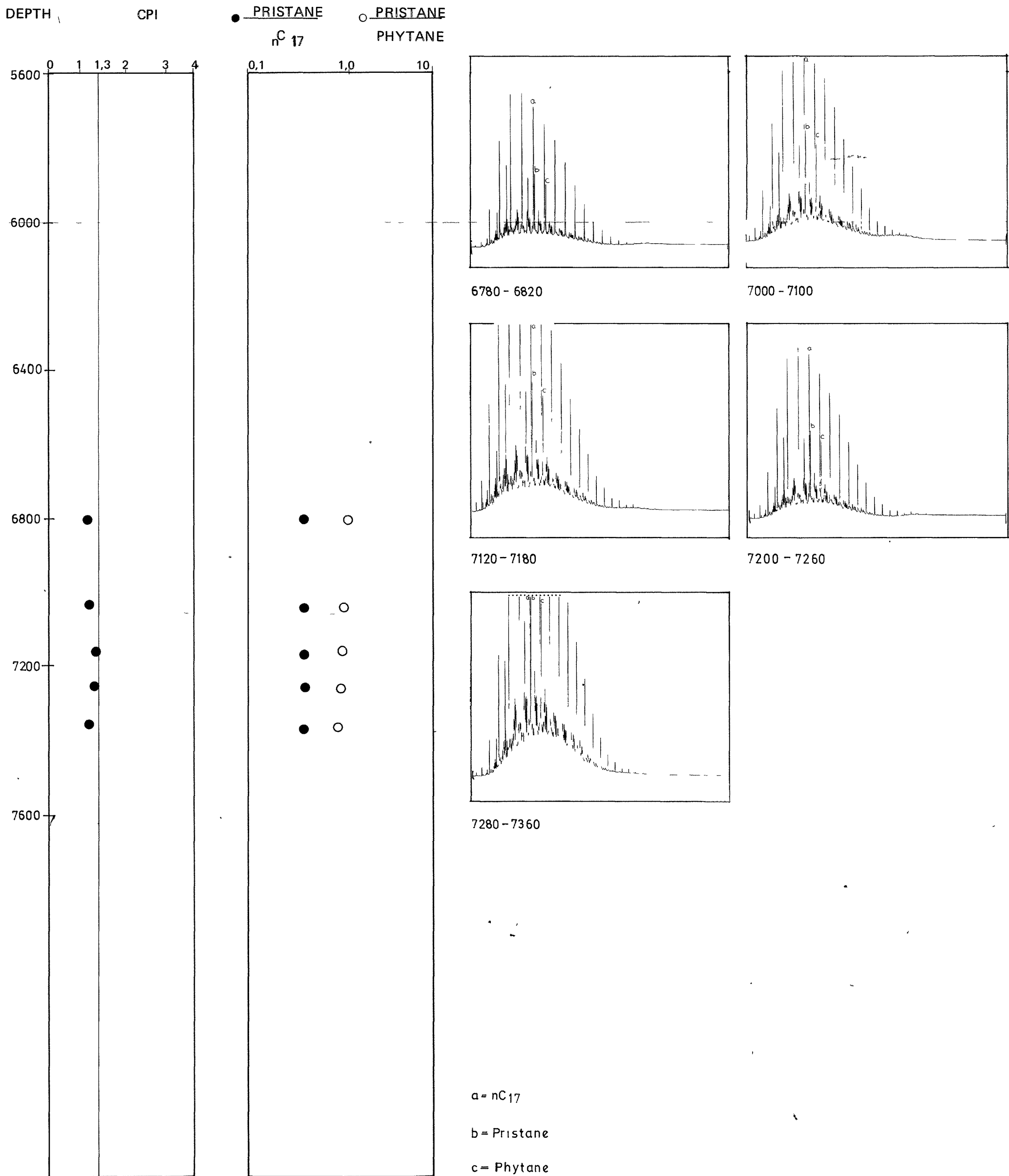


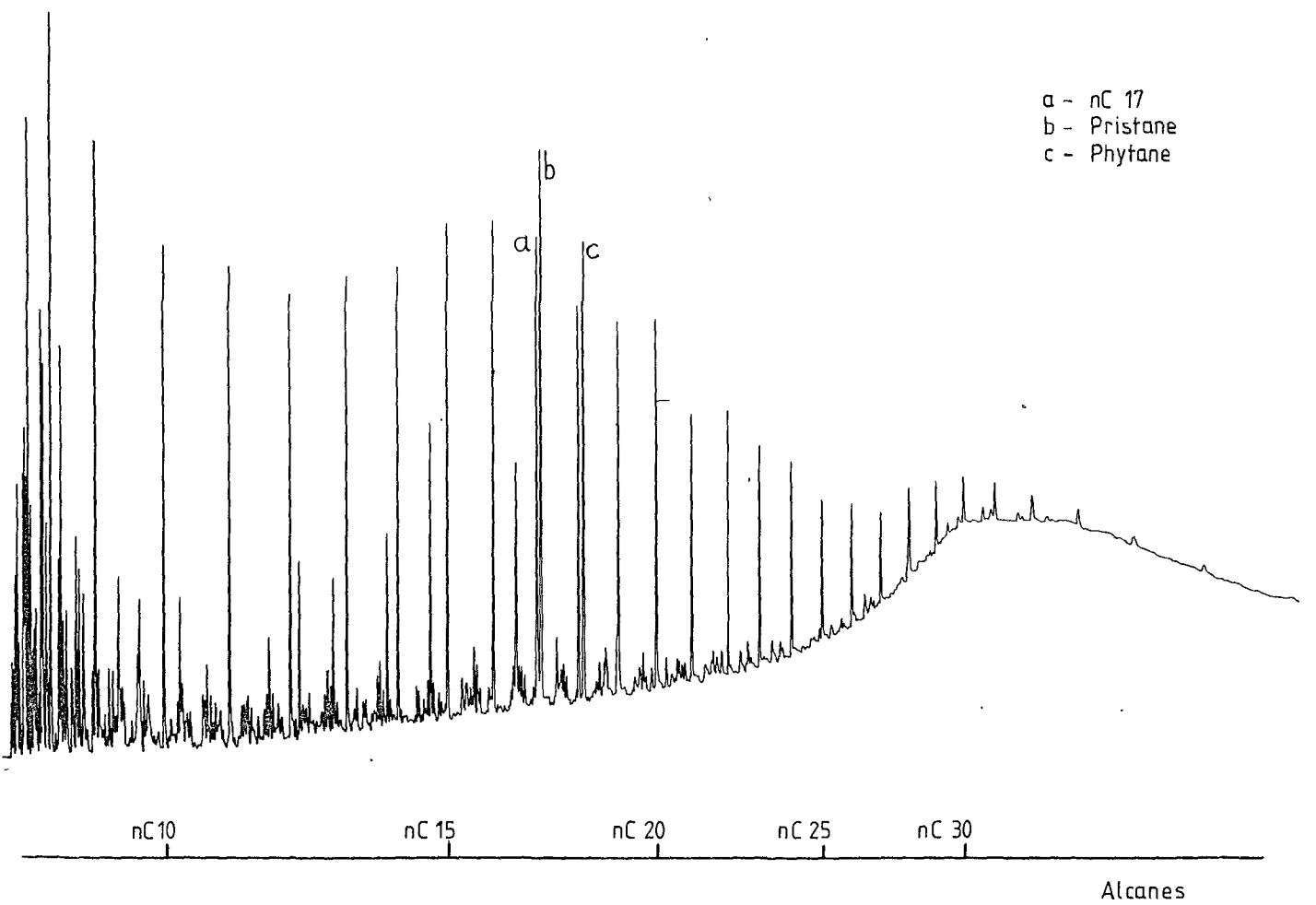
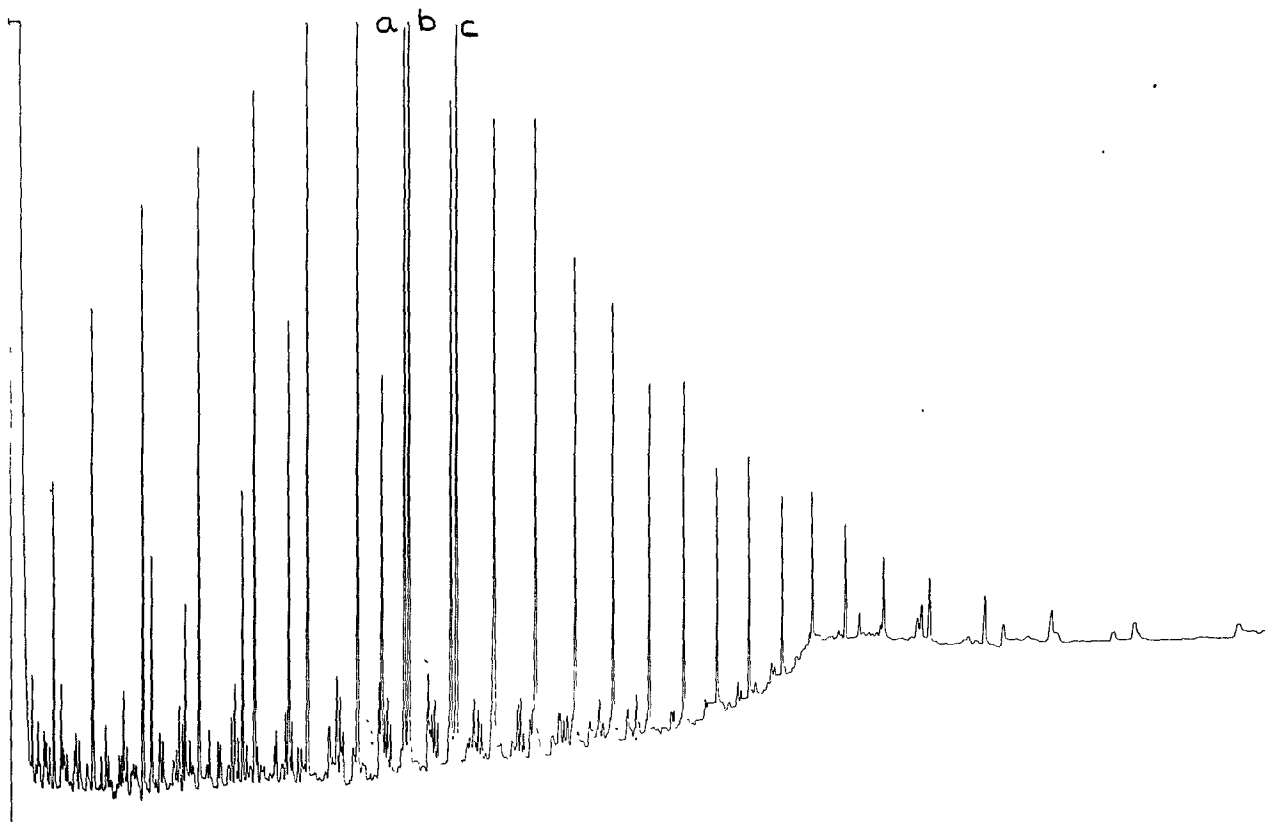
MATURATION



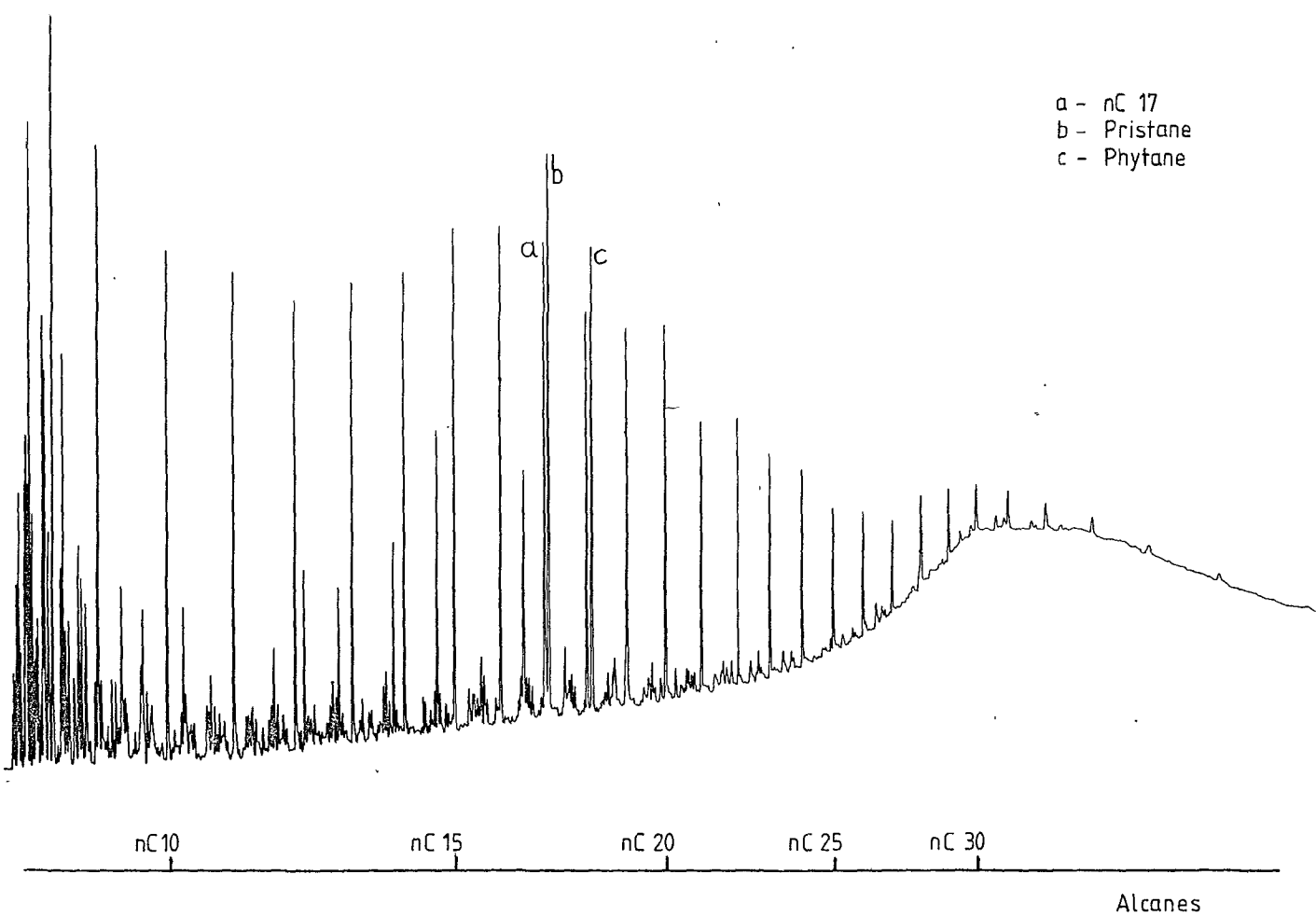
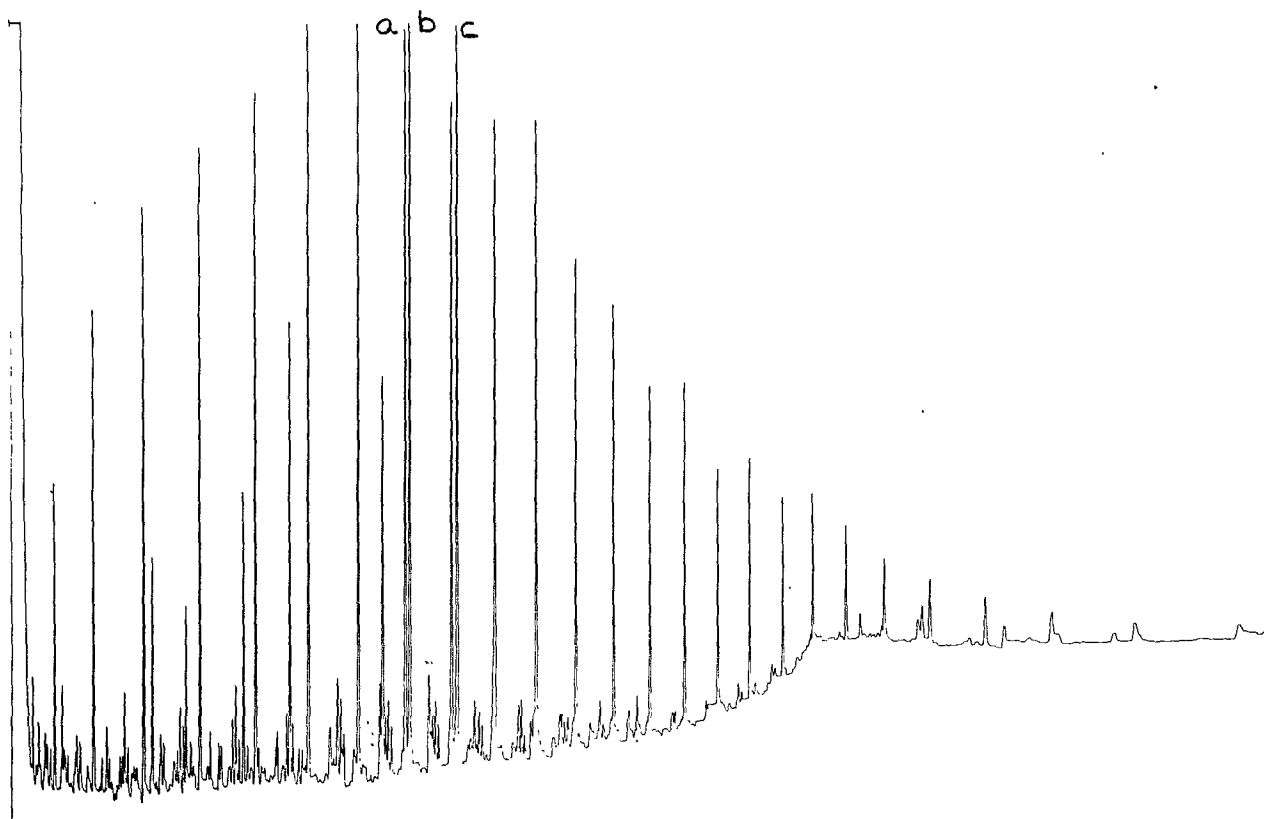
- | | |
|---|---|
|  Amorphous material, Sapropel |  Wood remains |
|  Algal |  Undifferentiated disperse herbaceous material |
|  Spores and pollen |  Black coal fragments |
|  Cuticles |  |

C₁₅⁺ SATURATED HYDROCARBONS



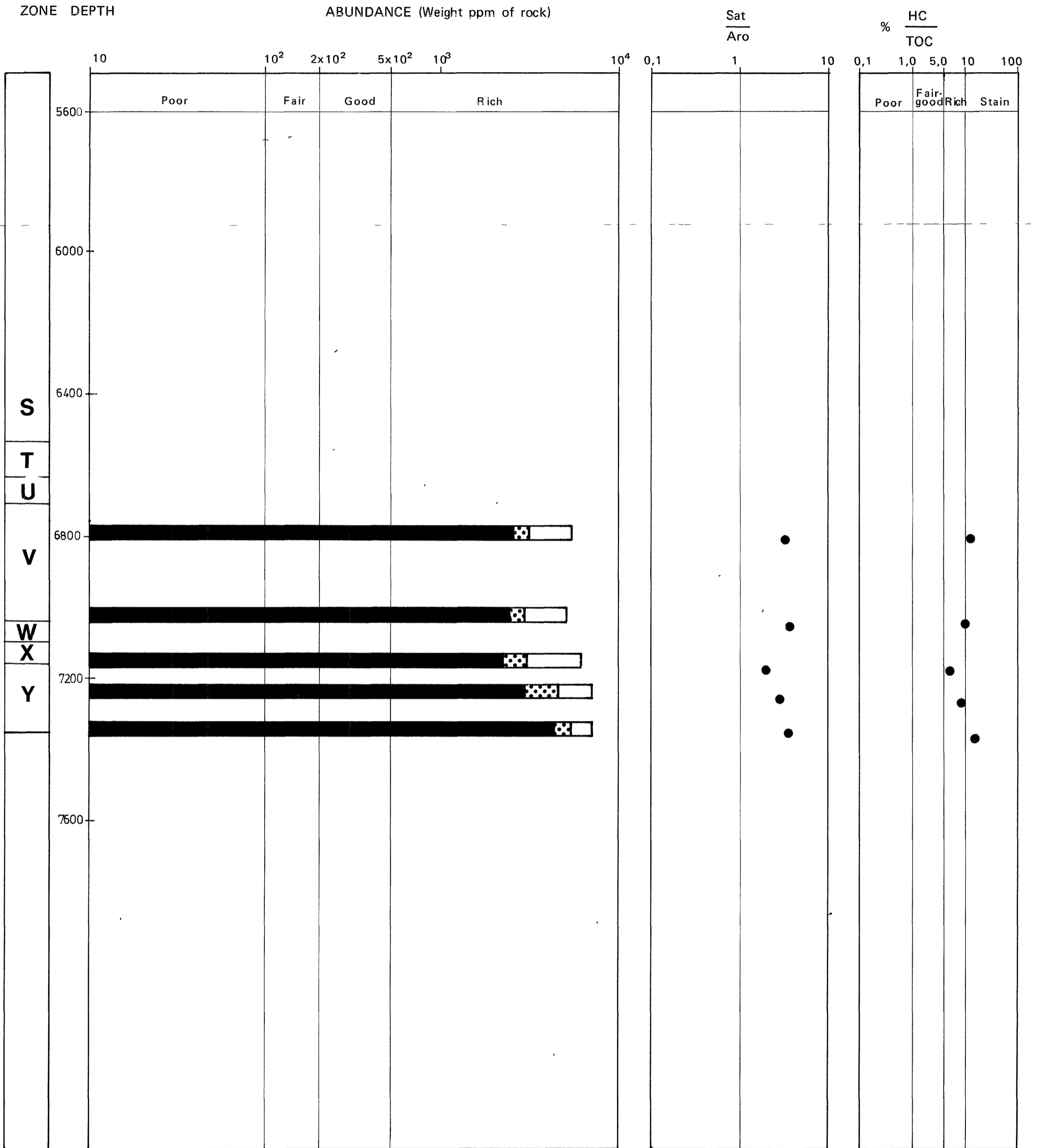


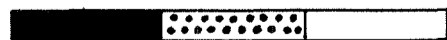
Gaschromatograms of whole oil, and saturated fraction of well 17/12 - 2



Gaschromatograms of whole oil, and saturated fraction of well 17/12 - 2

C₁₅⁺HYDROCARBONS
 Presentation of Analytical Data

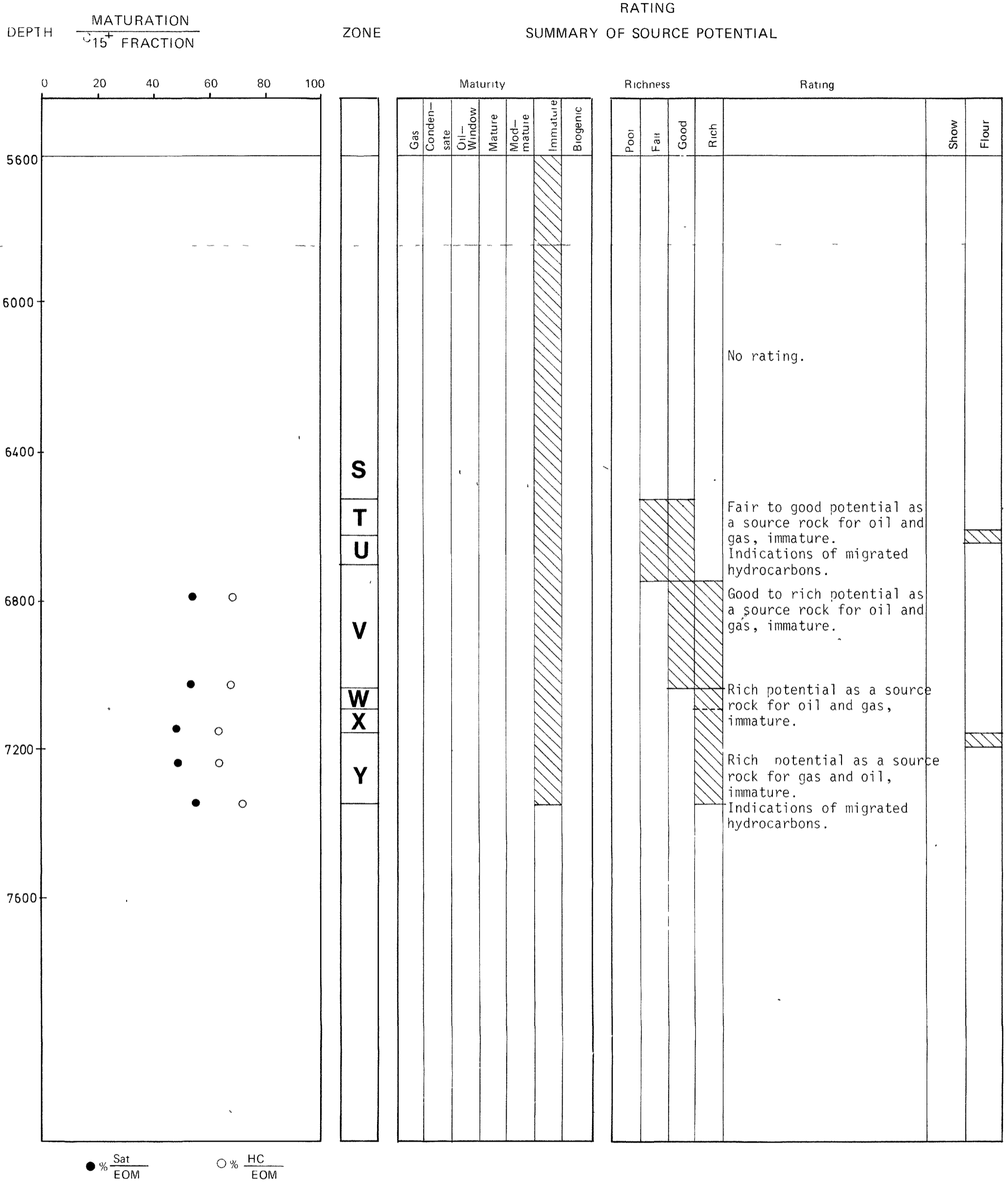



 Sat. Aro. NSO Asp

Sat: Saturated Hydrocarbons
 Aro: Aromatic Hydrocarbons
 NSO: Nitrogen, Sulphur and Oxygen containing compounds

Asp: Asphaltenes
 HC: C₁₅ Hydrocarbons
 TOC: Total Organic Carbon

INTERPRETATION DIAGRAM



● % $\frac{\text{Sat}}{\text{EOM}}$ ○ % $\frac{\text{HC}}{\text{EOM}}$

Sat Saturated Hydrocarbons
 HC Hydrocarbons
 EOM Extractable Organic Matter

TOTAL ORGANIC CARBON (TOC)
Presentation of Analytical Data

