

#	Rt.min.	Signal	Compound	Area	Amount
		FID			ug/mg
Internal standards (if added):					
1)	13.07	GC1	C12D26	10630791	3.64
6)	25.38	GC1	C16D34	16291884	3.64
2)	10.36	GC1	nC11	2081	
3)	13.60	GC1	nC12	6163	
4)	16.86	GC1	nC13	9067	
5)	20.03	GC1	nC14	53142	
7)	21.97	GC1	iC16	44866	0.01
8)	23.08	GC1	nC15	105750	0.02
9)	25.98	GC1	nC16	124102	0.03
10)	27.35	GC1	iC18	34251	0.01
11)	28.74	GC1	nC17	72242	0.02
12)	28.91	GC1	pristane	40533	0.01
13)	31.37	GC1	nC18	41995	0.01
14)	31.63	GC1	phytane	8413	0.00
15)	33.89	GC1	nC19	17826	0.00
16)	36.29	GC1	nC20	23208	0.01
17)	38.59	GC1	nC21	11269	0.00
18)	40.79	GC1	nC22	12417	0.00
19)	42.90	GC1	nC23	6366	0.00
20)	44.94	GC1	nC24	8083	0.00
21)	46.89	GC1	nC25	4985	0.00
22)	48.78	GC1	nC26	4130	0.00
23)	50.60	GC1	nC27	2997	0.00
24)	52.36	GC1	nC28	3996	0.00
25)	54.06	GC1	nC29	3292	0.00
26)	55.70	GC1	nC30	1920	0.00
27)	57.29	GC1	nC31	2365	0.00
28)	58.84	GC1	nC32	1311	0.00
29)	60.35	GC1	nC33	778	0.00
30)	61.79	GC1	nC34	1353	0.00
31)	63.33	GC1	nC35	2351	0.00

Saturated hydrocarbons

GC/FID detection HP-6890

Compound data and ratios



Norsk Hydro E&P Research Centre, Bergen, Norway
Petroleum Geochemistry Laboratories

Data file name: 2822S.D
Sample name: 35/11-12 2822m mud sat
Data File Path: C:\HPCHEM\1\DATA\3511\MUD\
Misc. info.:

Vial no.: 3
Method: MSD_S_E2
Operator: marian
Date: 18:59:00

Response curve y = ax
Response factors equally 1.0

Ratios:	Area	Amount
Pr/nC17	0.56	0.56
Ph/nC18	0.20	0.20
(Pr/nC17)/(Ph/nC18)	2.80	2.80
Pr/Ph	4.82	4.82
nC17/(nC17+nC27)	0.96	0.96
CPI-1	0.98	0.98
CPI-2 (2*nC27/(nC26+nC27))	0.84	0.84

Saturated hydrocarbons

GC/FID detection HP-6890

Compound data and ratios



#	Rt.min.	Signal	Compound	Area	Amount
FID					ug/mg
Internal standards (if added):					
1)	13.05	GC1	C12D26	7335994	3.74
6)	25.36	GC1	C16D34	11895596	3.74
2)	25.36	GC1	nC11	11895596	
3)	13.60	GC1	nC12	5932	
4)	16.86	GC1	nC13	9803	
5)	20.03	GC1	nC14	54200	
7)	21.95	GC1	iC16	38046	0.01
8)	23.07	GC1	nC15	84500	0.03
9)	25.98	GC1	nC16	142649	0.04
10)	27.35	GC1	iC18	37675	0.01
11)	28.74	GC1	nC17	59087	0.02
12)	28.90	GC1	pristane	39986	0.01
13)	31.37	GC1	nC18	49055	0.02
14)	31.62	GC1	phytane	9176	0.00
15)	33.89	GC1	nC19	14390	0.00
16)	36.29	GC1	nC20	23443	0.01
17)	38.59	GC1	nC21	8286	0.00
18)	40.79	GC1	nC22	13563	0.00
19)	42.91	GC1	nC23	6640	0.00
20)	44.94	GC1	nC24	10501	0.00
21)	46.89	GC1	nC25	4972	0.00
22)	48.78	GC1	nC26	5245	0.00
23)	50.60	GC1	nC27	3133	0.00
24)	52.35	GC1	nC28	3320	0.00
25)	54.06	GC1	nC29	5002	0.00
26)	55.70	GC1	nC30	2036	0.00
27)	57.30	GC1	nC31	1818	0.00
28)	58.84	GC1	nC32	2753	0.00
29)	60.34	GC1	nC33	1205	0.00
30)	61.80	GC1	nC34	1805	0.00
31)	63.28	GC1	nC35	1326	0.00

Norsk Hydro E&P Research Centre, Bergen, Norway
Petroleum Geochemistry Laboratories

Data file name: **2900S.D**
 Sample name: **35/11-12 2900m mud sat**
 Data File Path: C:\HPCHEM\1\DATA\3511\MUD\
 Misc. info.:

 Vial no.: 4
 Method: MSD_S_E2
 Operator: marian
 Date: 20:27:00

 Response curve y = ax
 Response factors equally 1.0

Ratios:	Area	Amount
Pr/nC17	0.68	0.68
Ph/nC18	0.19	0.19
(Pr/nC17)/(Ph/nC18)	3.62	3.62
Pr/Ph	4.36	4.36
nC17/(nC17+nC27)	0.95	0.95
CPI-1	0.91	0.91
CPI-2 (2*nC27/(nC26+nC27))	0.75	0.75

#	Rt.min.	Signal	Compound	Area	Amount
		FID			ug/mg
<i>Internal standards (if added):</i>					
1)	13.05	GC1	C12D26	6866890	3.49
6)	25.35	GC1	C16D34	11659533	3.49
2)	10.36	GC1	nC11	4532	
3)	13.60	GC1	nC12	10187	
4)	16.86	GC1	nC13	15572	
5)	20.03	GC1	nC14	53851	
7)	21.95	GC1	iC16	54971	0.02
8)	23.07	GC1	nC15	119099	0.04
9)	25.98	GC1	nC16	146923	0.04
10)	27.34	GC1	iC18	48181	0.01
11)	28.74	GC1	nC17	83832	0.03
12)	28.90	GC1	pristane	58587	0.02
13)	31.37	GC1	nC18	49127	0.01
14)	31.62	GC1	phytane	15050	0.00
15)	33.89	GC1	nC19	21418	0.01
16)	36.29	GC1	nC20	26792	0.01
17)	38.59	GC1	nC21	16217	0.00
18)	40.79	GC1	nC22	13668	0.00
19)	42.90	GC1	nC23	11827	0.00
20)	44.94	GC1	nC24	11634	0.00
21)	46.89	GC1	nC25	8563	0.00
22)	48.78	GC1	nC26	6802	0.00
23)	50.60	GC1	nC27	4974	0.00
24)	52.35	GC1	nC28	4841	0.00
25)	54.05	GC1	nC29	4745	0.00
26)	55.69	GC1	nC30	2892	0.00
27)	57.29	GC1	nC31	3655	0.00
28)	58.85	GC1	nC32	3747	0.00
29)	60.34	GC1	nC33	1242	0.00
30)	61.78	GC1	nC34	2016	0.00
31)	63.30	GC1	nC35	1546	0.00

Saturated hydrocarbons

GC/FID detection HP-6890

Compound data and ratios



Norsk Hydro E&P Research Centre, Bergen, Norway
Petroleum Geochemistry Laboratories

Data file name: 3000S.D
Sample name: 35/11-12 3000m mud sat
Data File Path: C:\HPCHEM\1\DATA\3511MUD\

Misc. info.:

Vial no.: 5
Method: MSD_S_E2
Operator: marian
Date: 21:55:00

Response curve y = ax
Response factors equally 1.0

Ratios:	Area	Amount
Pr/nC17	0.70	0.70
Ph/nC18	0.31	0.31
(Pr/nC17)/(Ph/nC18)	2.28	2.28
Pr/Ph	3.89	3.89
nC17/(nC17+nC27)	0.94	0.94
CPI-1	1.02	1.02
CPI-2 (2*nC27/(nC26+nC27))	0.84	0.84

#	Rt.min.	Signal	Compound	Area	Amount
FID					
Internal standards (if added):					
1)	13.06	GC1	C12D26	10221870	3.64
6)	25.37	GC1	C16D34	16965287	3.64
2)	10.35	GC1	nC11	9218	
3)	13.60	GC1	nC12	15005	
4)	16.86	GC1	nC13	23653	
5)	20.03	GC1	nC14	82966	
7)	21.94	GC1	iC16	81209	0.02
8)	23.07	GC1	nC15	173107	0.04
9)	25.98	GC1	nC16	246362	0.05
10)	27.34	GC1	iC18	80006	0.02
11)	28.74	GC1	nC17	136860	0.03
12)	28.90	GC1	pristane	99844	0.02
13)	31.37	GC1	nC18	78393	0.02
14)	31.62	GC1	phytane	26794	0.01
15)	33.88	GC1	nC19	28578	0.01
16)	36.29	GC1	nC20	37963	0.01
17)	38.58	GC1	nC21	26866	0.01
18)	40.78	GC1	nC22	24114	0.01
19)	42.90	GC1	nC23	16235	0.00
20)	44.93	GC1	nC24	17367	0.00
21)	46.89	GC1	nC25	11577	0.00
22)	48.77	GC1	nC26	9607	0.00
23)	50.59	GC1	nC27	11376	0.00
24)	52.34	GC1	nC28	10394	0.00
25)	54.05	GC1	nC29	11018	0.00
26)	55.69	GC1	nC30	8040	0.00
27)	57.29	GC1	nC31	7561	0.00
28)	58.83	GC1	nC32	6647	0.00
29)	60.34	GC1	nC33	6084	0.00
30)	61.78	GC1	nC34	4243	0.00
31)	63.31	GC1	nC35	2982	0.00

Saturated hydrocarbons

GC/FID detection HP-6890

Compound data and ratios



Norsk Hydro E&P Research Centre, Bergen, Norway
Petroleum Geochemistry Laboratories

Data file name: 3200S.D
Sample name: 35/11-12 3200m mud sat
Data File Path: C:\HPCHEM\1\DATA\3511\MUD\

Misc. info.:

Vial no.: 6
Method: MSD_S_E2
Operator: marian
Date: 23:23:00

Response curve y = ax
Response factors equally 1.0

Ratios:	Area	Amount
Pr/nC17	0.73	0.73
Ph/nC18	0.34	0.34
(Pr/nC17)/(Ph/nC18)	2.13	2.13
Pr/Ph	3.73	3.73
nC17/(nC17+nC27)	0.92	0.92
CPI-1	1.06	1.06
CPI-2 (2*nC27/(nC26+nC27))	1.08	1.08

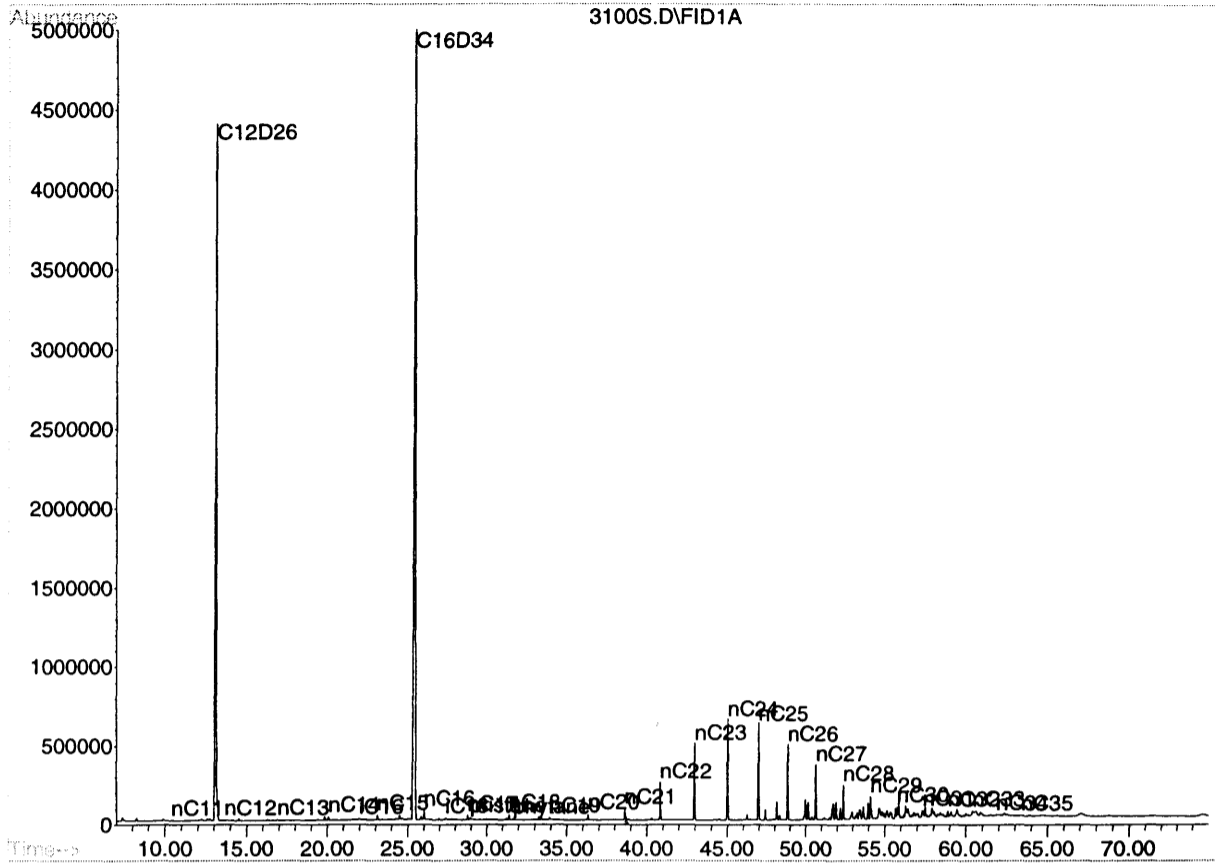
Title: Saturated HC (FID) and Biomarkers (MSD)

Data File: C:\HPCHEM\1\DATA\35_11_12\3100S.D Name: 35/11-12 3100m sat MUD

Misc:

Method: MSD_S_E2Operator: marian

Date Reported: Mon Sep 11 10:20:09 2000



#	Rt.min.	Signal	Compound	Area	Amount
FID					ug/mg
Internal standards (if added):					
1)	13.07	GC1	C12D26	10279271	3.75
6)	25.38	GC1	C16D34	17002043	3.75
2)	10.36	GC1	nC11	5486	
3)	13.60	GC1	nC12	14684	
4)	16.86	GC1	nC13	12902	
5)	20.03	GC1	nC14	54853	
7)	21.94	GC1	iC16	44083	0.01
8)	23.07	GC1	nC15	97458	0.02
9)	25.98	GC1	nC16	143179	0.03
10)	27.34	GC1	iC18	45154	0.01
11)	28.74	GC1	nC17	72941	0.02
12)	28.90	GC1	pristane	56293	0.01
13)	31.37	GC1	nC18	51940	0.01
14)	31.62	GC1	phytane	15516	0.00
15)	33.89	GC1	nC19	20547	0.00
16)	36.29	GC1	nC20	32241	0.01
17)	38.58	GC1	nC21	14813	0.00
18)	40.79	GC1	nC22	21255	0.00
19)	42.91	GC1	nC23	12337	0.00
20)	44.93	GC1	nC24	12982	0.00
21)	46.89	GC1	nC25	9034	0.00
22)	48.77	GC1	nC26	10483	0.00
23)	50.59	GC1	nC27	6829	0.00
24)	52.35	GC1	nC28	11082	0.00
25)	54.05	GC1	nC29	10665	0.00
26)	55.69	GC1	nC30	7760	0.00
27)	57.29	GC1	nC31	7791	0.00
28)	58.84	GC1	nC32	9696	0.00
29)	60.34	GC1	nC33	7319	0.00
30)	61.80	GC1	nC34	5707	0.00
31)	63.31	GC1	nC35	7397	0.00

Saturated hydrocarbons

GC/FID detection HP-6890

Compound data and ratios



Norsk Hydro E&P Research Centre, Bergen, Norway
Petroleum Geochemistry Laboratories

Data file name: 3300S.D
Sample name: 35/11-12 3300m mud sat
Data File Path: C:\HPCHEM\1\DATA\3511\MUD\
Misc. info.:

Vial no.: 7
Method: MSD_S_E2
Operator: marian
Date: 0:51:00

Response curve $y = ax$
Response factors equally 1.0

Ratios:	Area	Amount
Pr/nC17	0.77	0.77
Ph/nC18	0.30	0.30
(Pr/nC17)/(Ph/nC18)	2.58	2.58
Pr/Ph	3.63	3.63
nC17/(nC17+nC27)	0.91	0.91
CPI-1	0.85	0.85
CPI-2 (2*nC27/(nC26+nC27))	0.79	0.79

Saturated hydrocarbons

GC/FID detection HP-6890

Compound data and ratios



Norsk Hydro E&P Research Centre, Bergen, Norway
Petroleum Geochemistry Laboratories

Data file name: **NSO1_37S.D**
Sample name: **nso1-ref 37sat**
Data File Path: C:\HPCHEM\1\DATA\35_11_12\
Misc. info.:

Vial no.: 2
Method: MSD_S_E2
Operator: marian
Date: 18:38:00

Response curve $y = ax$
Response factors equally 1.0

#	Rt.min.	Signal	Compound	Area	Amount
FID					
Internal standards (if added):					
1)	13.08	GC1	C12D26	7447400	4.00
6)	25.39	GC1	C16D34	8979511	4.00
2)	10.41	GC1	nC11	13358797	
3)	13.68	GC1	nC12	13194996	
4)	16.96	GC1	nC13	12486157	
5)	20.14	GC1	nC14	12636440	
7)	22.01	GC1	iC16	5143804	2.29
8)	23.19	GC1	nC15	12864136	5.73
9)	26.10	GC1	nC16	11542371	5.14
10)	27.43	GC1	iC18	3672215	1.64
11)	28.86	GC1	nC17	10563745	4.71
12)	29.01	GC1	pristane	5841631	2.60
13)	31.49	GC1	nC18	8586604	3.82
14)	31.71	GC1	phytane	4190239	1.87
15)	34.00	GC1	nC19	7710503	3.43
16)	36.40	GC1	nC20	6839131	3.05
17)	38.69	GC1	nC21	6197329	2.76
18)	40.89	GC1	nC22	5574163	2.48
19)	43.00	GC1	nC23	4972774	2.22
20)	45.03	GC1	nC24	5015558	2.23
21)	46.98	GC1	nC25	4197382	1.87
22)	48.87	GC1	nC26	3513738	1.57
23)	50.68	GC1	nC27	2893474	1.29
24)	52.44	GC1	nC28	2631740	1.17
25)	54.13	GC1	nC29	2718860	1.21
26)	55.78	GC1	nC30	1772324	0.79
27)	57.37	GC1	nC31	1775909	0.79
28)	58.90	GC1	nC32	1341790	0.60
29)	60.40	GC1	nC33	1200933	0.53
30)	61.86	GC1	nC34	1559403	0.69
31)	63.39	GC1	nC35	915761	0.41

Ratios:	Area	Amount
Pr/nC17	0.55	0.55
Ph/nC18	0.49	0.49
(Pr/nC17)/(Ph/nC18)	1.13	1.13
Pr/Ph	1.39	1.39
nC17/(nC17+nC27)	0.78	0.78
CPI-1	1.07	1.07
CPI-2 (2*nC27/(nC26+nC27))	0.90	0.90

#	Rt.min.	Signal	Compound	Area	Amount
FID					ug/mg
Internal standards (if added):					
1)	13.07	GC1	C12D26	6074359	4.00
6)	25.38	GC1	C16D34	7347550	4.00
2)	10.40	GC1	nC11	10608318	
3)	13.66	GC1	nC12	10849027	
4)	16.94	GC1	nC13	10418376	
5)	20.13	GC1	nC14	10498119	
7)	22.00	GC1	iC16	4326342	2.36
8)	23.18	GC1	nC15	10829018	5.90
9)	26.09	GC1	nC16	9737724	5.30
10)	27.42	GC1	iC18	3112804	1.69
11)	28.85	GC1	nC17	8899764	4.85
12)	29.00	GC1	pristane	4944226	2.69
13)	31.48	GC1	nC18	7270588	3.96
14)	31.70	GC1	phytane	3514274	1.91
15)	33.99	GC1	nC19	6504142	3.54
16)	36.39	GC1	nC20	5766401	3.14
17)	38.68	GC1	nC21	5195031	2.83
18)	40.88	GC1	nC22	4710139	2.56
19)	42.99	GC1	nC23	4219081	2.30
20)	45.02	GC1	nC24	4100585	2.23
21)	46.97	GC1	nC25	3581217	1.95
22)	48.85	GC1	nC26	2965178	1.61
23)	50.67	GC1	nC27	2480045	1.35
24)	52.43	GC1	nC28	2186846	1.19
25)	54.13	GC1	nC29	2256471	1.23
26)	55.77	GC1	nC30	1487864	0.81
27)	57.36	GC1	nC31	1452781	0.79
28)	58.90	GC1	nC32	1142100	0.62
29)	60.40	GC1	nC33	1037737	0.56
30)	61.86	GC1	nC34	1299404	0.71
31)	63.38	GC1	nC35	709029	0.39

Saturated hydrocarbons

GC/FID detection HP-6890

Compound data and ratios



Norsk Hydro E&P Research Centre, Bergen, Norway
Petroleum Geochemistry Laboratories

Data file name: **NSO1_29S.D**
Sample name: **nso1-ref 29sat**
Data File Path: C:\HPCHEM\1\DATA\35_11_12\
Misc. info.:

Vial no.: 2
Method: MSD_S_E2
Operator: marian
Date: 6:53:00

Response curve y = ax
Response factors equally 1.0

Ratios:	Area	Amount
Pr/nC17	0.56	0.56
Ph/nC18	0.48	0.48
(Pr/nC17)/(Ph/nC18)	1.15	1.15
Pr/Ph	1.41	1.41
nC17/(nC17+nC27)	0.78	0.78
CPI-1	1.08	1.08
CPI-2 (2*nC27/(nC26+nC27))	0.91	0.91

#	Rt.min.	Signal	Compound	Area	Amount
				FID	
Internal standards (if added):					
1)	13.06	GC1	C12D26	5314373	4.00
6)	25.37	GC1	C16D34	6679496	4.00
2)	10.39	GC1	nC11	9152936	
3)	13.66	GC1	nC12	9513464	
4)	16.94	GC1	nC13	9185956	
5)	20.12	GC1	nC14	9459118	
7)	22.00	GC1	iC16	3907258	2.34
8)	23.17	GC1	nC15	9572739	5.73
9)	26.08	GC1	nC16	8761204	5.25
10)	27.41	GC1	iC18	2795948	1.67
11)	28.84	GC1	nC17	8003484	4.79
12)	28.99	GC1	pristane	4459139	2.67
13)	31.47	GC1	nC18	6601337	3.95
14)	31.70	GC1	phytane	3214071	1.92
15)	33.98	GC1	nC19	5899985	3.53
16)	36.38	GC1	nC20	5198451	3.11
17)	38.67	GC1	nC21	4665031	2.79
18)	40.87	GC1	nC22	4250399	2.55
19)	42.98	GC1	nC23	3776424	2.26
20)	45.01	GC1	nC24	3757125	2.25
21)	46.96	GC1	nC25	3159528	1.89
22)	48.85	GC1	nC26	2679130	1.60
23)	50.66	GC1	nC27	2200517	1.32
24)	52.42	GC1	nC28	2031340	1.22
25)	54.12	GC1	nC29	2018597	1.21
26)	55.76	GC1	nC30	1343893	0.80
27)	57.35	GC1	nC31	1315728	0.79
28)	58.89	GC1	nC32	1008900	0.60
29)	60.39	GC1	nC33	942356	0.56
30)	61.85	GC1	nC34	1069399	0.64
31)	63.37	GC1	nC35	605405	0.36

Saturated hydrocarbons

GC/FID detection HP-6890

Compound data and ratios



Norsk Hydro E&P Research Centre, Bergen, Norway
Petroleum Geochemistry Laboratories

Data file name: **NSO1_20S.D**
Sample name: **nso1-ref 20sat**
Data File Path: C:\HPCHEM\1\DATA\35_11_12\

Misc. info.:

Vial no.: 2
Method: MSD_S_E2
Operator: marian
Date: 17:40:00

Response curve y = ax
Response factors equally 1.0

Ratios:	Area	Amount
Pr/nC17	0.56	0.56
Ph/nC18	0.49	0.49
(Pr/nC17)/(Ph/nC18)	1.14	1.14
Pr/Ph	1.39	1.39
nC17/(nC17+nC27)	0.78	0.78
CPI-1	1.06	1.06
CPI-2 (2*nC27/(nC26+nC27))	0.90	0.90

#	Rt.min.	Signal	Compound	Area	Amount
		FID			ug/mg
Internal standards (if added):					
1)	13.04	GC1	C12D26	3126772	4.00
6)	25.33	GC1	C16D34	4196875	4.00
2)	10.37	GC1	nC11	5178118	
3)	13.62	GC1	nC12	5644723	
4)	16.90	GC1	nC13	5780719	
5)	20.08	GC1	nC14	5755379	
7)	21.97	GC1	iC16	2457103	2.34
8)	23.13	GC1	nC15	6047880	5.76
9)	26.04	GC1	nC16	5223233	4.98
10)	27.38	GC1	iC18	1886900	1.80
11)	28.80	GC1	nC17	5029315	4.79
12)	28.95	GC1	pristane	2833094	2.70
13)	31.43	GC1	nC18	4163657	3.97
14)	31.66	GC1	phytane	2023175	1.93
15)	33.94	GC1	nC19	3715467	3.54
16)	36.34	GC1	nC20	3355468	3.20
17)	38.63	GC1	nC21	2964332	2.83
18)	40.83	GC1	nC22	2715076	2.59
19)	42.94	GC1	nC23	2425498	2.31
20)	44.97	GC1	nC24	2355042	2.24
21)	46.93	GC1	nC25	2052256	1.96
22)	48.81	GC1	nC26	1703056	1.62
23)	50.63	GC1	nC27	1452195	1.38
24)	52.38	GC1	nC28	1264373	1.21
25)	54.08	GC1	nC29	1342159	1.28
26)	55.73	GC1	nC30	851782	0.81
27)	57.31	GC1	nC31	865718	0.83
28)	58.86	GC1	nC32	650307	0.62
29)	60.36	GC1	nC33	601189	0.57
30)	61.82	GC1	nC34	753993	0.72
31)	63.33	GC1	nC35	484441	0.46

Saturated hydrocarbons

GC/FID detection HP-6890

Compound data and ratios



Norsk Hydro E&P Research Centre, Bergen, Norway
Petroleum Geochemistry Laboratories

Data file name: **NSO1_2S.D**
Sample name: **nso1_2 ref. sat**
Data File Path: C:\HPCHEM\1\DATA\351112\

Misc. info.:

Vial no.: 1
Method: MSD_S_E2
Operator: marian
Date: 15:56:00

Response curve y = ax
Response factors equally 1.0

Ratios:	Area	Amount
Pr/nC17	0.56	0.56
Ph/nC18	0.49	0.49
(Pr/nC17)/(Ph/nC18)	1.16	1.16
Pr/Ph	1.40	1.40
nC17/(nC17+nC27)	0.78	0.78
CPI-1	1.10	1.10
CPI-2 (2*nC27/(nC26+nC27))	0.92	0.92

#	Rt.min.	Signal	Compound	Area	Amount
		FID			ug/mg
Internal standards (if added):					
1)	13.03	GC1	C12D26	3123073	4.00
6)	25.32	GC1	C16D34	4235939	4.00
2)	10.36	GC1	nC11	5106438	
3)	13.62	GC1	nC12	5601826	
4)	16.89	GC1	nC13	5739373	
5)	20.08	GC1	nC14	5928725	
7)	21.96	GC1	iC16	2459333	2.32
8)	23.13	GC1	nC15	6042275	5.71
9)	26.03	GC1	nC16	5405310	5.10
10)	27.37	GC1	iC18	1765627	1.67
11)	28.79	GC1	nC17	5028909	4.75
12)	28.94	GC1	pristane	2833563	2.68
13)	31.42	GC1	nC18	4119580	3.89
14)	31.65	GC1	phytane	2026003	1.91
15)	33.93	GC1	nC19	3712877	3.51
16)	36.33	GC1	nC20	3351059	3.16
17)	38.62	GC1	nC21	2986693	2.82
18)	40.83	GC1	nC22	2710290	2.56
19)	42.94	GC1	nC23	2410809	2.28
20)	44.97	GC1	nC24	2363608	2.23
21)	46.92	GC1	nC25	2070963	1.96
22)	48.80	GC1	nC26	1713397	1.62
23)	50.62	GC1	nC27	1447056	1.37
24)	52.38	GC1	nC28	1300373	1.23
25)	54.08	GC1	nC29	1320788	1.25
26)	55.72	GC1	nC30	854042	0.81
27)	57.32	GC1	nC31	868303	0.82
28)	58.86	GC1	nC32	671903	0.63
29)	60.35	GC1	nC33	581908	0.55
30)	61.81	GC1	nC34	722191	0.68
31)	63.33	GC1	nC35	560879	0.53

Saturated hydrocarbons

GC/FID detection HP-6890

Compound data and ratios



Norsk Hydro E&P Research Centre, Bergen, Norway
Petroleum Geochemistry Laboratories

Data file name: NSO1_2S.D
Sample name: nso1_2 ref. sat
Data File Path: C:\HPCHEM1\DATA\3511MUD\
Misc. info.:

Vial no.: 1
Method: MSD_S_E2
Operator: marian
Date: 16:03:00

Response curve $y = ax$
Response factors equally 1.0

Ratios:	Area	Amount
Pr/nC17	0.56	0.56
Ph/nC18	0.49	0.49
(Pr/nC17)/(Ph/nC18)	1.15	1.15
Pr/Ph	1.40	1.40
nC17/(nC17+nC27)	0.78	0.78
CPI-1	1.09	1.09
CPI-2 (2*nC27/(nC26+nC27))	0.92	0.92

#	Rt.min.	Signal	Compound	Area	Amount
		FID			ug/mg
Internal standards (if added):					
1)	13.03	GC1	C12D26	3441368	4.00
6)	25.32	GC1	C16D34	4522267	4.00
2)	10.37	GC1	nC11	5734112	
3)	13.62	GC1	nC12	6192116	
4)	16.90	GC1	nC13	6246401	
5)	20.08	GC1	nC14	6201876	
7)	21.96	GC1	iC16	2668668	2.36
8)	23.13	GC1	nC15	6483007	5.73
9)	26.03	GC1	nC16	5965967	5.28
10)	27.37	GC1	iC18	1903419	1.68
11)	28.79	GC1	nC17	5441382	4.81
12)	28.94	GC1	pristane	3069823	2.72
13)	31.42	GC1	nC18	4508975	3.99
14)	31.65	GC1	phytane	2240590	1.98
15)	33.93	GC1	nC19	4023689	3.56
16)	36.33	GC1	nC20	3580420	3.17
17)	38.63	GC1	nC21	3215007	2.84
18)	40.83	GC1	nC22	2916227	2.58
19)	42.94	GC1	nC23	2614859	2.31
20)	44.97	GC1	nC24	2579967	2.28
21)	46.92	GC1	nC25	2216956	1.96
22)	48.80	GC1	nC26	1821254	1.61
23)	50.62	GC1	nC27	1521511	1.35
24)	52.37	GC1	nC28	1383355	1.22
25)	54.08	GC1	nC29	1403729	1.24
26)	55.72	GC1	nC30	939389	0.83
27)	57.30	GC1	nC31	909427	0.80
28)	58.85	GC1	nC32	718302	0.64
29)	60.36	GC1	nC33	636582	0.56
30)	61.81	GC1	nC34	863964	0.76
31)	63.32	GC1	nC35	457894	0.41

Saturated hydrocarbons

GC/FID detection HP-6890

Compound data and ratios



Norsk Hydro E&P Research Centre, Bergen, Norway
Petroleum Geochemistry Laboratories

Data file name: NSO1_9S.D
Sample name: nso1_9 ref. sat
Data File Path: C:\HPCHEM\1\DATA\3511MUD\

Misc. info.:

Vial no.: 1
Method: MSD_S_E2
Operator: marian
Date: 2:19:00

Response curve $y = ax$
Response factors equally 1.0

Ratios:	Area	Amount
Pr/nC17	0.56	0.56
Ph/nC18	0.50	0.50
(Pr/nC17)/(Ph/nC18)	1.14	1.14
Pr/Ph	1.37	1.37
nC17/(nC17+nC27)	0.78	0.78
CPI-1	1.07	1.07
CPI-2 (2*nC27/(nC26+nC27))	0.91	0.91

Title: Petroleum geochemical study of well 35/11-12

Rev.: 0

Date: 2000-10-02

Page: 22 of 20

Appendix 4

**C₁₅₊ saturated hydrocarbon biomarkers,
data tables and reports**

#	Rt.min.	m/z	Rf.	Name	Height	Amount
Internal standard (if added)						
1)	46.46	217.2		21aa	6140	24
Diterpanes:						
2)	34.10	191.2	s1	19/3	768	2
3)	36.08	191.2	s1	20/3	768	2
4)	38.14	191.2	s1	21/3	1088	3
5)	42.11	191.2	s1	23/3	3253	9
6)	43.23	191.2	s1	24/3	1106	3
7)	45.50	191.2	s1	25/3	879	3
8)	47.06	191.2	s1	24/4	2068	6
9)	47.16	191.2	s1	26/3R	418	1
10)	47.28	191.2	s1	26/3S	517	2
11)	50.82	191.2	s1	28/3R	689	2
12)	51.07	191.2	s1	28/3S	577	2
13)	51.86	191.2	s1	29/3R	720	2
14)	52.15	191.2	s1	29/3S	741	2
Triterpanes:						
15)	53.03	191.2	s1	27Ts	6708	19
16)	53.23	177.15	s1	25nor28ab	617	2
17)	53.70	191.2	s1	27Tm	11967	35
18)	54.05	177.15	s1	25nor29ab	387	1
19)	54.17	191.2	s1	27b	1019	3
20)	55.26	191.2	s1	28ab	901	3
21)	55.44	177.15	s1	25nor30ab	613	2
22)	55.98	191.2	s1	29ab	29096	85
23)	56.08	191.2	s1	29Ts	11770	34
24)	56.31	191.2	s1	30D	3231	9
25)	56.77	191.2	s1	29ba	5426	16
26)	57.35	191.2	s2	30ab	54500	102
27)	57.69	191.2	s1	30D13	5591	16
28)	57.96	191.2	s2	30ba	9739	18
29)	58.93	191.2	s1	31abS	29017	84
30)	59.13	191.2	s1	31abR	19674	57
31)	59.47	191.2	s1	30G	3048	9
32)	59.65	191.2	s1	31ba	7634	22
33)	60.16	191.2	s1	32abS	14433	42
34)	60.43	191.2	s1	32abR	10812	31
35)	61.59	191.2	s1	33abS	12606	37
36)	61.96	191.2	s1	33abR	9214	27
37)	63.15	191.2	s1	34abS	8055	23
38)	63.66	191.2	s1	34abR	6546	19
39)	64.93	191.2	s1	35abS	5229	15
40)	65.66	191.2	s1	35abR	3844	11

Saturated biomarkers

GC/MS detection HP-6890/5973
Compound data



Norsk Hydro E&P Research Centre, Bergen, Norway
Petroleum Geochemistry Laboratories

Data file name: 2905S.D
Sample name: 35/11-12 2905m sat
Data File Path: C:\HPCHEM\1\DATA\35_11_12\
Misc. info.:

Vial no.: 3
Method: MSD_S_E2
Operator: marian
Date: 5 Sep 2000 19:08

Response curve y = ax
Response factor groups: s1...s3, responses as defined in method

#	Rt.min.	m/z	Rf.	Name	Height	Amount
Steranes:						
41)	38.63	217.2	s3	21aa	3837	16
42)	40.31	217.2	s3	21bb	3127	13
43)	40.43	217.2	s3	22aa	2202	9
44)	42.66	217.2	s3	22bb	1858	8
45)	48.99	217.2	s3	27dbS	10926	46
46)	49.63	217.2	s3	27dbR	6470	27
47)	51.99	218.2	s3	27bbR	7422	31
48)	52.14	218.2	s3	27bbS	4687	20
49)	52.55	217.2	s3	27aaR	18936	79
50)	53.74	218.2	s3	28bbR	4372	18
51)	53.89	218.2	s3	28bbS	4851	20
52)	54.85	217.2	s3	29aaS	7168	30
53)	55.17	218.2	s3	29bbR	5972	25
54)	55.28	218.2	s3	29bbS	4383	18
55)	55.87	217.2	s3	29aaR	15575	65
56)	56.35	218.2	s3	30bbR	1386	6
57)	56.40	218.2	s3	30bbS	1430	6

#	Rt.min.	m/z	Rf.	Name	Height	Amount
Internal standard (if added)						
1)	46.51	217.2		24baa	2513	24
Diterpanes:						
2)	34.16	191.2	s1	19/3	1115	8
3)	36.14	191.2	s1	20/3	836	6
4)	38.19	191.2	s1	21/3	1176	9
5)	42.16	191.2	s1	23/3	2726	20
6)	43.28	191.2	s1	24/3	1551	11
7)	45.55	191.2	s1	25/3	862	6
8)	47.11	191.2	s1	24/4	1499	11
9)	47.20	191.2	s1	26/3R	588	4
10)	47.34	191.2	s1	26/3S	664	5
11)	50.87	191.2	s1	28/3R	670	5
12)	51.11	191.2	s1	28/3S	701	5
13)	51.90	191.2	s1	29/3R	1019	7
14)	52.20	191.2	s1	29/3S	1019	7
Triterpanes:						
15)	53.07	191.2	s1	27Ts	4702	34
16)	53.31	177.15	s1	25nor28ab	4319	31
17)	53.75	191.2	s1	27Tm	4130	30
18)	54.12	177.15	s1	25nor29ab	2315	17
19)	54.21	191.2	s1	27b	815	6
20)	55.31	191.2	s1	28ab	6477	47
21)	55.52	177.15	s1	25nor30ab	2120	15
22)	56.02	191.2	s1	29ab	12514	91
23)	56.12	191.2	s1	29Ts	4872	35
24)	56.37	191.2	s1	30D	2694	20
25)	56.81	191.2	s1	29ba	2366	17
26)	57.39	191.2	s2	30ab	30108	140
27)	57.74	191.2	s1	30D13	1656	12
28)	58.01	191.2	s2	30ba	3046	14
29)	58.98	191.2	s1	31abS	10633	77
30)	59.17	191.2	s1	31abR	7675	56
31)	59.51	191.2	s1	30G	1223	9
32)	59.70	191.2	s1	31ba	1707	12
33)	60.21	191.2	s1	32abS	7622	55
34)	60.48	191.2	s1	32abR	5531	40
35)	61.65	191.2	s1	33abS	6670	48
36)	62.01	191.2	s1	33abR	4298	31
37)	63.19	191.2	s1	34abS	3876	28
38)	63.72	191.2	s1	34abR	2292	17
39)	65.00	191.2	s1	35abS	3077	22
40)	65.72	191.2	s1	35abR	1920	14

Saturated biomarkers

GC/MS detection HP-6890/5973
Compound data



Norsk Hydro E&P Research Centre, Bergen, Norway
Petroleum Geochemistry Laboratories

Data file name: NSO1_37S.D
Sample name: nso1-ref 37sat
Data File Path: C:\HPCHEM\1\DATA\35_11_12\
Misc. info.:

Vial no.: 2
Method: MSD_S_E2
Operator: marian
Date: 6 Sep 2000 18:38

Response curve y = ax
Response factor groups: s1...s3, responses as defined in method

#	Rt.min.	m/z	Rf.	Name	Height	Amount
Steranes:						
41)	38.69	217.2	s3	21aa	2460	26
42)	40.35	217.2	s3	21bb	3288	34
43)	40.48	217.2	s3	22aa	1934	20
44)	42.71	217.2	s3	22bb	1879	20
45)	49.04	217.2	s3	27dbS	5876	61
46)	49.67	217.2	s3	27dbR	3401	36
47)	52.03	218.2	s3	27bbR	4562	48
48)	52.18	218.2	s3	27bbS	2845	30
49)	52.58	217.2	s3	27aaR	1747	18
50)	53.79	218.2	s3	28bbR	2683	28
51)	53.92	218.2	s3	28bbS	3520	37
52)	54.89	217.2	s3	29aaS	1757	18
53)	55.21	218.2	s3	29bbR	3835	40
54)	55.32	218.2	s3	29bbS	3770	39
55)	55.92	217.2	s3	29aaR	1970	21
56)	56.38	218.2	s3	30bbR	1525	16
57)	56.44	218.2	s3	30bbS	1286	13

Saturated biomarkers

GC/MS detection HP-6890/5973
Compound data



Norsk Hydro E&P Research Centre, Bergen, Norway
Petroleum Geochemistry Laboratories

Data file name: 2937S.D
Sample name: 35/11-12 2937m sat
Data File Path: C:\HPCHEM\1\DATA\35_11_12\
Misc. info.:

Vial no.: 4
Method: MSD_S_E2
Operator: marian
Date: 5 Sep 2000 20:36

Response curve y = ax
Response factor groups: s1...s3, responses as defined in method

#	Rt.min.	m/z	Rf.	Name	Height	Amount
Internal standard (if added)						
1)	46.46	217.2		24baa	5487	23
Diterpanes:						
2)	34.12	191.2	s1	19/3	817	3
3)	36.09	191.2	s1	20/3	706	2
4)	38.14	191.2	s1	21/3	1027	3
5)	42.11	191.2	s1	23/3	3138	10
6)	43.24	191.2	s1	24/3	956	3
7)	45.51	191.2	s1	25/3	726	2
8)	47.06	191.2	s1	24/4	2017	6
9)	47.16	191.2	s1	26/3R	307	1
10)	47.29	191.2	s1	26/3S	442	1
11)	50.82	191.2	s1	28/3R	636	2
12)	51.07	191.2	s1	28/3S	471	2
13)	51.86	191.2	s1	29/3R	681	2
14)	52.16	191.2	s1	29/3S	680	2
Triterpanes:						
15)	53.04	191.2	s1	27Ts	6607	21
16)	53.24	177.15	s1	25nor28ab	605	2
17)	53.72	191.2	s1	27Tm	10316	33
18)	54.08	177.15	s1	25nor29ab	201	1
19)	54.18	191.2	s1	27b	859	3
20)	55.26	191.2	s1	28ab	1036	3
21)	55.44	177.15	s1	25nor30ab	375	1
22)	55.98	191.2	s1	29ab	26830	86
23)	56.09	191.2	s1	29Ts	10956	35
24)	56.33	191.2	s1	30D	3957	13
25)	56.78	191.2	s1	29ba	4312	14
26)	57.36	191.2	s2	30ab	61232	126
27)	57.69	191.2	s1	30D13	5070	16
28)	57.98	191.2	s2	30ba	8581	18
29)	58.95	191.2	s1	31abS	27846	89
30)	59.13	191.2	s1	31abR	20424	65
31)	59.48	191.2	s1	30G	2752	9
32)	59.65	191.2	s1	31ba	6025	19
33)	60.16	191.2	s1	32abS	15459	49
34)	60.44	191.2	s1	32abR	10918	35
35)	61.60	191.2	s1	33abS	14659	47
36)	61.97	191.2	s1	33abR	9747	31
37)	63.15	191.2	s1	34abS	9589	31
38)	63.66	191.2	s1	34abR	6361	20
39)	64.94	191.2	s1	35abS	8378	27
40)	65.66	191.2	s1	35abR	5496	18

#	Rt.min.	m/z	Rf.	Name	Height	Amount
Steranes:						
41)	38.64	217.2	s3	21aa	4217	19
42)	40.32	217.2	s3	21bb	3050	14
43)	40.43	217.2	s3	22aa	2273	10
44)	42.67	217.2	s3	22bb	2001	9
45)	49.00	217.2	s3	27dbS	11323	52
46)	49.64	217.2	s3	27dbR	6852	32
47)	51.99	218.2	s3	27bbR	8961	41
48)	52.15	218.2	s3	27bbS	6377	29
49)	52.56	217.2	s3	27aaR	15940	74
50)	53.76	218.2	s3	28bbR	4670	22
51)	53.89	218.2	s3	28bbS	5577	26
52)	54.86	217.2	s3	29aaS	7054	33
53)	55.18	218.2	s3	29bbR	6313	29
54)	55.28	218.2	s3	29bbS	5642	26
55)	55.88	217.2	s3	29aaR	11894	55
56)	56.35	218.2	s3	30bbR	2114	10
57)	56.41	218.2	s3	30bbS	1986	9

#	Rt.min.	m/z	Rf.	Name	Height	Amount
					ng/mg	
Internal standard (if added):						
1)	46.48	217.2		24baa	5597	23
Diterpanes:						
2)	34.12	191.2	s1	19/3	870	3
3)	36.10	191.2	s1	20/3	701	2
4)	38.15	191.2	s1	21/3	1363	4
5)	42.13	191.2	s1	23/3	4072	13
6)	43.25	191.2	s1	24/3	1299	4
7)	45.53	191.2	s1	25/3	972	3
8)	47.07	191.2	s1	24/4	2362	7
9)	47.17	191.2	s1	26/3R	511	2
10)	47.30	191.2	s1	26/3S	708	2
11)	50.84	191.2	s1	28/3R	903	3
12)	51.09	191.2	s1	28/3S	730	2
13)	51.88	191.2	s1	29/3R	827	3
14)	52.17	191.2	s1	29/3S	922	3
Triterpanes:						
15)	53.05	191.2	s1	27Ts	7301	23
16)	53.28	177.15	s1	25nor28ab	4993	16
17)	53.73	191.2	s1	27Tm	10409	33
18)	54.09	177.15	s1	25nor29ab	380	1
19)	54.21	191.2	s1	27b	1189	4
20)	55.31	191.2	s1	28ab	39121	123
21)	55.48	177.15	s1	25nor30ab	544	2
22)	56.00	191.2	s1	29ab	34506	108
23)	56.10	191.2	s1	29Ts	11896	37
24)	56.34	191.2	s1	30D	3812	12
25)	56.79	191.2	s1	29ba	5560	17
26)	57.38	191.2	s2	30ab	66170	133
27)	57.70	191.2	s1	30D13	5158	16
28)	57.99	191.2	s2	30ba	8363	17
29)	58.95	191.2	s1	31abS	28778	90
30)	59.14	191.2	s1	31abR	21803	68
31)	59.49	191.2	s1	30G	2972	9
32)	59.66	191.2	s1	31ba	6441	20
33)	60.18	191.2	s1	32abS	16874	53
34)	60.45	191.2	s1	32abR	11640	36
35)	61.61	191.2	s1	33abS	16555	52
36)	61.98	191.2	s1	33abR	11458	36
37)	63.16	191.2	s1	34abS	9760	31
38)	63.68	191.2	s1	34abR	6278	20
39)	64.96	191.2	s1	35abS	8944	28
40)	65.68	191.2	s1	35abR	5773	18

Saturated biomarkers

GC/MS detection HP-6890/5973
Compound data



Norsk Hydro E&P Research Centre, Bergen, Norway
Petroleum Geochemistry Laboratories

Data file name: 2977S.D
Sample name: 35/11-12 2977m sat
Data File Path: C:\HPCHEM\1\DATA\35_11_12\
Misc. info.:

Vial no.: 5
Method: MSD_S_E2
Operator: marian
Date: 5 Sep 2000 22:04

Response curve y = ax
Response factor groups: s1...s3, responses as defined in method

#	Rt.min.	m/z	Rf.	Name	Height	Amount
					ng/mg	
Steranes:						
41)	38.65	217.2	s3	21aa	4989	23
42)	40.33	217.2	s3	21bb	4789	22
43)	40.44	217.2	s3	22aa	2926	13
44)	42.68	217.2	s3	22bb	2765	13
45)	49.01	217.2	s3	27dbS	12352	56
46)	49.65	217.2	s3	27dbR	6630	30
47)	52.01	218.2	s3	27bbR	13668	62
48)	52.16	218.2	s3	27bbS	10506	48
49)	52.56	217.2	s3	27aaR	17137	78
50)	53.78	218.2	s3	28bbR	9143	41
51)	53.90	218.2	s3	28bbS	10162	46
52)	54.89	217.2	s3	29aaS	9601	43
53)	55.19	218.2	s3	29bbR	10897	49
54)	55.29	218.2	s3	29bbS	13651	62
55)	55.90	217.2	s3	29aaR	13741	62
56)	56.36	218.2	s3	30bbR	3463	16
57)	56.41	218.2	s3	30bbS	3196	14

#	Rt.min.	m/z	Rf.	Name	Height	Amount
					ng/mg	
Internal standard (if added)						
1)	46.51	217.2		24baa	8483	22
Diterpanes:						
2)	34.15	191.2	s1	19/3	1627	3
3)	36.14	191.2	s1	20/3	1330	3
4)	38.18	191.2	s1	21/3	2098	4
5)	42.15	191.2	s1	23/3	6365	13
6)	43.27	191.2	s1	24/3	2141	4
7)	45.55	191.2	s1	25/3	1636	3
8)	47.11	191.2	s1	24/4	4377	9
9)	47.20	191.2	s1	26/3R	811	2
10)	47.33	191.2	s1	26/3S	953	2
11)	50.87	191.2	s1	28/3R	1611	3
12)	51.12	191.2	s1	28/3S	1164	2
13)	51.91	191.2	s1	29/3R	1565	3
14)	52.20	191.2	s1	29/3S	2067	4
Triterpanes:						
15)	53.08	191.2	s1	27Ts	10500	21
16)	53.31	177.15	s1	25nor28ab	7149	14
17)	53.75	191.2	s1	27Tm	15413	31
18)	54.11	177.15	s1	25nor29ab	851	2
19)	54.22	191.2	s1	27b	1958	4
20)	55.36	191.2	s1	28ab	127250	253
21)	55.53	177.15	s1	25nor30ab	929	2
22)	56.04	191.2	s1	29ab	54453	108
23)	56.14	191.2	s1	29Ts	16785	33
24)	56.38	191.2	s1	30D	5709	11
25)	56.81	191.2	s1	29ba	11537	23
26)	57.41	191.2	s2	30ab	97628	125
27)	57.73	191.2	s1	30D13	6647	13
28)	58.02	191.2	s2	30ba	12037	15
29)	58.99	191.2	s1	31abS	40101	80
30)	59.17	191.2	s1	31abR	27333	54
31)	59.51	191.2	s1	30G	4625	9
32)	59.70	191.2	s1	31ba	8201	16
33)	60.21	191.2	s1	32abS	23431	47
34)	60.48	191.2	s1	32abR	14932	30
35)	61.64	191.2	s1	33abS	24793	49
36)	62.00	191.2	s1	33abR	17300	34
37)	63.20	191.2	s1	34abS	14006	28
38)	63.71	191.2	s1	34abR	8579	17
39)	64.99	191.2	s1	35abS	13302	26
40)	65.72	191.2	s1	35abR	8981	18

Saturated biomarkers

GC/MS detection HP-6890/5973
Compound data



Norsk Hydro E&P Research Centre, Bergen, Norway
Petroleum Geochemistry Laboratories

Data file name: 2997S.D
Sample name: 35/11-12 2997m sat
Data File Path: C:\HPCHEM1\DATA\35_11_12\

Misc. info.:

Vial no.: 6
Method: MSD_S_E2
Operator: marian
Date: 5 Sep 2000 23:32

Response curve y = ax

Response factor groups: s1...s3, responses as defined in method

#	Rt.min.	m/z	Rf.	Name	Height	Amount
					ng/mg	
Steranes:						
41)	38.68	217.2	s3	21aa	8796	25
42)	40.36	217.2	s3	21bb	9146	26
43)	40.47	217.2	s3	22aa	4996	14
44)	42.71	217.2	s3	22bb	4918	14
45)	49.05	217.2	s3	27dbS	19899	57
46)	49.68	217.2	s3	27dbR	11803	34
47)	52.04	218.2	s3	27bbR	24341	70
48)	52.20	218.2	s3	27bbS	20021	57
49)	52.59	217.2	s3	27aaR	25404	73
50)	53.80	218.2	s3	28bbR	17522	50
51)	53.94	218.2	s3	28bbS	19109	55
52)	54.93	217.2	s3	29aaS	14975	43
53)	55.23	218.2	s3	29bbR	20162	58
54)	55.34	218.2	s3	29bbS	23887	69
55)	55.93	217.2	s3	29aaR	20626	59
56)	56.40	218.2	s3	30bbR	6024	17
57)	56.44	218.2	s3	30bbS	5130	15

#	Rt.min.	m/z	Rf.	Name	Height	Amount
					ng/mg	
Internal standard (if added):						
1)	46.50	217.2		24baa	6394	25
Diterpanes:						
2)	34.14	191.2	s1	19/3	1288	4
3)	36.13	191.2	s1	20/3	994	3
4)	38.17	191.2	s1	21/3	1525	4
5)	42.14	191.2	s1	23/3	4349	13
6)	43.27	191.2	s1	24/3	1640	5
7)	45.54	191.2	s1	25/3	1224	4
8)	47.09	191.2	s1	24/4	3399	10
9)	47.18	191.2	s1	26/3R	702	2
10)	47.32	191.2	s1	26/3S	741	2
11)	50.86	191.2	s1	28/3R	1054	3
12)	51.10	191.2	s1	28/3S	771	2
13)	51.90	191.2	s1	29/3R	1186	3
14)	52.18	191.2	s1	29/3S	1268	4
Triterpanes:						
15)	53.06	191.2	s1	27Ts	7463	22
16)	53.29	177.15	s1	25nor28ab	3442	10
17)	53.74	191.2	s1	27Tm	11784	35
18)	54.09	177.15	s1	25nor29ab	256	1
19)	54.21	191.2	s1	27b	1545	5
20)	55.34	191.2	s1	28ab	89423	263
21)	55.49	177.15	s1	25nor30ab	669	2
22)	56.01	191.2	s1	29ab	42155	124
23)	56.12	191.2	s1	29Ts	12510	37
24)	56.36	191.2	s1	30D	4247	13
25)	56.79	191.2	s1	29ba	5132	15
26)	57.38	191.2	s2	30ab	78637	149
27)	57.72	191.2	s1	30D13	5832	17
28)	57.99	191.2	s2	30ba	9472	18
29)	58.96	191.2	s1	31abS	28976	85
30)	59.15	191.2	s1	31abR	20838	61
31)	59.50	191.2	s1	30G	4229	12
32)	59.68	191.2	s1	31ba	5897	17
33)	60.19	191.2	s1	32abS	17094	50
34)	60.46	191.2	s1	32abR	11962	35
35)	61.62	191.2	s1	33abS	16886	50
36)	62.00	191.2	s1	33abR	12017	35
37)	63.18	191.2	s1	34abS	9391	28
38)	63.69	191.2	s1	34abR	5697	17
39)	64.98	191.2	s1	35abS	9178	27
40)	65.71	191.2	s1	35abR	5949	18

Saturated biomarkers

GC/MS detection HP-6890/5973
Compound data



Norsk Hydro E&P Research Centre, Bergen, Norway
Petroleum Geochemistry Laboratories

Data file name: 3017S.D
Sample name: 35/11-12 3017m sat
Data File Path: C:\HPCHEM1\DATA\35_11_12\
Misc. info.:

Vial no.: 7
Method: MSD_S_E2
Operator: marian
Date: 6 Sep 2000 1:00

Response curve y = ax
Response factor groups: s1...s3, responses as defined in method

#	Rt.min.	m/z	Rf.	Name	Height	Amount
					ng/mg	
Steranes:						
41)	38.67	217.2	s3	21aa	6659	28
42)	40.35	217.2	s3	21bb	5923	25
43)	40.46	217.2	s3	22aa	3374	14
44)	42.70	217.2	s3	22bb	3054	13
45)	49.03	217.2	s3	27dbS	12792	54
46)	49.66	217.2	s3	27dbR	7861	33
47)	52.02	218.2	s3	27bbR	14048	60
48)	52.17	218.2	s3	27bbS	10243	44
49)	52.57	217.2	s3	27aaR	12005	51
50)	53.78	218.2	s3	28bbR	9020	38
51)	53.92	218.2	s3	28bbS	9354	40
52)	54.91	217.2	s3	29aaS	7694	33
53)	55.21	218.2	s3	29bbR	11305	48
54)	55.31	218.2	s3	29bbS	12767	54
55)	55.91	217.2	s3	29aaR	10551	45
56)	56.37	218.2	s3	30bbR	2970	13
57)	56.43	218.2	s3	30bbS	2654	11

Saturated biomarkers

GC/MS detection HP-6890/5973
Compound data



Norsk Hydro E&P Research Centre, Bergen, Norway
Petroleum Geochemistry Laboratories

Data file name: 3057S.D
Sample name: 35/11-12 3057m sat
Data File Path: K:\CAPMS\FIDW95\35_11_12\
Misc. info.:

Vial no.: 8
Method: MSD_S_E2
Operator: marian
Date: 6 Sep 2000 2:28

Response curve y = ax
Response factor groups: s1...s3, responses as defined in method

#	Rt.min.	m/z	Rf.	Name	Height	Amount
Internal standard (if added):						
1)	46.52	217.2		24baa	10006	24
Diterpanes:						
2)	34.16	191.2	s1	19/3	2893	5
3)	36.14	191.2	s1	20/3	1829	3
4)	38.19	191.2	s1	21/3	2961	5
5)	42.17	191.2	s1	23/3	9016	16
6)	43.29	191.2	s1	24/3	3339	6
7)	45.57	191.2	s1	25/3	2445	4
8)	47.11	191.2	s1	24/4	5918	11
9)	47.21	191.2	s1	26/3R	1222	2
10)	47.34	191.2	s1	26/3S	1496	3
11)	50.88	191.2	s1	28/3R	1902	3
12)	51.12	191.2	s1	28/3S	1639	3
13)	51.92	191.2	s1	29/3R	2443	4
14)	52.21	191.2	s1	29/3S	2542	5
Triterpanes:						
15)	53.10	191.2	s1	27Ts	16092	29
16)	53.33	177.15	s1	25nor28ab	3595	7
17)	53.78	191.2	s1	27Tm	23402	43
18)	54.11	177.15	s1	25nor29ab	1101	2
19)	54.25	191.2	s1	27b	2831	5
20)	55.40	191.2	s1	28ab	207600	378
21)	55.46	177.15	s1	25nor30ab	1538	3
22)	56.05	191.2	s1	29ab	87594	159
23)	56.16	191.2	s1	29Ts	26547	48
24)	56.39	191.2	s1	30D	9675	18
25)	56.84	191.2	s1	29ba	18380	33
26)	57.43	191.2	s2	30ab	170732	200
27)	57.76	191.2	s1	30D13	10697	19
28)	58.03	191.2	s2	30ba	18829	22
29)	59.00	191.2	s1	31abS	64630	118
30)	59.20	191.2	s1	31abR	46763	85
31)	59.53	191.2	s1	30G	9321	17
32)	59.71	191.2	s1	31ba	12439	23
33)	60.22	191.2	s1	32abS	38110	69
34)	60.49	191.2	s1	32abR	27063	49
35)	61.66	191.2	s1	33abS	38511	70
36)	62.02	191.2	s1	33abR	24209	44
37)	63.21	191.2	s1	34abS	19141	35
38)	63.72	191.2	s1	34abR	11722	21
39)	65.01	191.2	s1	35abS	17237	31
40)	65.73	191.2	s1	35abR	10518	19

#	Rt.min.	m/z	Rf.	Name	Height	Amount
Steranes:						
41)	38.69	217.2	s3	21aa	8226	22
42)	40.37	217.2	s3	21bb	7596	20
43)	40.48	217.2	s3	22aa	4344	11
44)	42.72	217.2	s3	22bb	4320	11
45)	49.05	217.2	s3	27dbS	20881	55
46)	49.68	217.2	s3	27dbR	11494	30
47)	52.05	218.2	s3	27bbR	25997	68
48)	52.21	218.2	s3	27bbS	19267	51
49)	52.61	217.2	s3	27aaR	18064	47
50)	53.81	218.2	s3	28bbR	15140	40
51)	53.94	218.2	s3	28bbS	17103	45
52)	54.96	217.2	s3	29aaS	13828	36
53)	55.25	218.2	s3	29bbR	24959	66
54)	55.36	218.2	s3	29bbS	30069	79
55)	55.95	217.2	s3	29aaR	19284	51
56)	56.41	218.2	s3	30bbR	5455	14
57)	56.46	218.2	s3	30bbS	4356	11

#	Rt.min.	m/z	Rf.	Name	Height	Amount
					ng/mg	
Internal standard (if added):						
1)	46.51	217.2		24baa	5716	21
Diterpanes:						
2)	34.16	191.2	s1	19/3	2009	5
3)	36.14	191.2	s1	20/3	1537	4
4)	38.19	191.2	s1	21/3	2510	6
5)	42.16	191.2	s1	23/3	7094	17
6)	43.28	191.2	s1	24/3	2626	6
7)	45.55	191.2	s1	25/3	1810	4
8)	47.11	191.2	s1	24/4	4763	12
9)	47.20	191.2	s1	26/3R	1054	3
10)	47.33	191.2	s1	26/3S	1249	3
11)	50.87	191.2	s1	28/3R	1697	4
12)	51.10	191.2	s1	28/3S	1332	3
13)	51.91	191.2	s1	29/3R	1763	4
14)	52.20	191.2	s1	29/3S	1845	4
Triterpanes:						
15)	53.08	191.2	s1	27Ts	12656	31
16)	53.32	177.15	s1	25nor28ab	16331	39
17)	53.75	191.2	s1	27Tm	14424	35
18)	54.12	177.15	s1	25nor29ab	808	2
19)	54.22	191.2	s1	27b	1862	5
20)	55.34	191.2	s1	28ab	60167	146
21)	55.53	177.15	s1	25nor30ab	1745	4
22)	56.03	191.2	s1	29ab	53014	128
23)	56.14	191.2	s1	29Ts	19212	46
24)	56.38	191.2	s1	30D	6649	16
25)	56.81	191.2	s1	29ba	6806	16
26)	57.41	191.2	s2	30ab	121363	189
27)	57.74	191.2	s1	30D13	7172	17
28)	58.02	191.2	s2	30ba	13405	21
29)	58.99	191.2	s1	31abS	49512	120
30)	59.18	191.2	s1	31abR	33032	80
31)	59.52	191.2	s1	30G	6034	15
32)	59.71	191.2	s1	31ba	9295	22
33)	60.21	191.2	s1	32abS	28825	70
34)	60.49	191.2	s1	32abR	18283	44
35)	61.65	191.2	s1	33abS	27305	66
36)	62.01	191.2	s1	33abR	18430	45
37)	63.20	191.2	s1	34abS	14052	34
38)	63.71	191.2	s1	34abR	8274	20
39)	65.00	191.2	s1	35abS	12884	31
40)	65.72	191.2	s1	35abR	7741	19

Saturated biomarkers

GC/MS detection HP-6890/5973
Compound data



Norsk Hydro E&P Research Centre, Bergen, Norway
Petroleum Geochemistry Laboratories

Data file name: 3095S.D
Sample name: 35/11-12 3095m sat
Data File Path: C:\HPCHEM\1\DATA\35_11_12\
Misc. info.:

Vial no.: 9
Method: MSD_S_E2
Operator: marian
Date: 6 Sep 2000 3:56

Response curve y = ax
Response factor groups: s1...s3, responses as defined in method

#	Rt.min.	m/z	Rf.	Name	Height	Amount
					ng/mg	
Steranes:						
41)	38.68	217.2	s3	21aa	5911	21
42)	40.35	217.2	s3	21bb	5866	20
43)	40.47	217.2	s3	22aa	3318	12
44)	42.71	217.2	s3	22bb	3120	11
45)	49.04	217.2	s3	27dbS	13694	48
46)	49.68	217.2	s3	27dbR	7908	28
47)	52.04	218.2	s3	27bbR	16693	58
48)	52.19	218.2	s3	27bbS	12724	44
49)	52.59	217.2	s3	27aaR	9696	34
50)	53.80	218.2	s3	28bbR	9035	32
51)	53.93	218.2	s3	28bbS	9476	33
52)	54.91	217.2	s3	29aaS	9529	33
53)	55.22	218.2	s3	29bbR	16136	56
54)	55.33	218.2	s3	29bbS	17715	62
55)	55.93	217.2	s3	29aaR	10764	38
56)	56.40	218.2	s3	30bbR	3056	11
57)	56.44	218.2	s3	30bbS	2579	9

#	Rt.min.	m/z	Rf.	Name	Height	Amount
					ng/mg	
Internal standard (if added):						
1)	46.50	217.2		24baa	4761	26
Diterpanes:						
2)	34.12	191.2	s1	19/3	1404	6
3)	36.04	191.2	s1	20/3	786	3
4)	38.15	191.2	s1	21/3	448	2
5)	42.13	191.2	s1	23/3	1626	7
6)	43.25	191.2	s1	24/3	644	3
7)	45.53	191.2	s1	25/3	421	2
8)	47.09	191.2	s1	24/4	1280	5
9)	47.19	191.2	s1	26/3R	295	1
10)	47.32	191.2	s1	26/3S	346	1
11)	50.86	191.2	s1	28/3R	524	2
12)	51.11	191.2	s1	28/3S	347	1
13)	51.90	191.2	s1	29/3R	581	2
14)	52.19	191.2	s1	29/3S	536	2
Triterpanes:						
15)	53.06	191.2	s1	27Ts	1686	7
16)	53.32	177.15	s1	25nor28ab	23971	99
17)	53.74	191.2	s1	27Tm	3767	16
18)	54.12	177.15	s1	25nor29ab	2686	11
19)	54.21	191.2	s1	27b	692	3
20)	55.31	191.2	s1	28ab	6128	25
21)	55.53	177.15	s1	25nor30ab	1618	7
22)	56.02	191.2	s1	29ab	8658	36
23)	56.12	191.2	s1	29Ts	2291	9
24)	56.35	191.2	s1	30D	1365	6
25)	56.81	191.2	s1	29ba	1513	6
26)	57.39	191.2	s2	30ab	18325	49
27)	57.73	191.2	s1	30D13	1661	7
28)	58.02	191.2	s2	30ba	2504	7
29)	58.97	191.2	s1	31abS	7084	29
30)	59.18	191.2	s1	31abR	5010	21
31)	59.52	191.2	s1	30G	845	3
32)	59.70	191.2	s1	31ba	1733	7
33)	60.21	191.2	s1	32abS	4581	19
34)	60.48	191.2	s1	32abR	3059	13
35)	61.63	191.2	s1	33abS	3128	13
36)	62.00	191.2	s1	33abR	2107	9
37)	63.19	191.2	s1	34abS	1894	8
38)	63.70	191.2	s1	34abR	1137	5
39)	64.98	191.2	s1	35abS	1085	4
40)	65.70	191.2	s1	35abR	734	3

Saturated biomarkers

GC/MS detection HP-6890/5973
Compound data



Norsk Hydro E&P Research Centre, Bergen, Norway
Petroleum Geochemistry Laboratories

Data file name: 3120_9S.D
Sample name: 35/11-12 3120.9m sat
Data File Path: C:\HPCHEM\1\DATA\35_11_12\
Misc. info.:

Vial no.: 10
Method: MSD_S_E2
Operator: marian
Date: 6 Sep 2000 5:25

Response curve y = ax
Response factor groups: s1...s3, responses as defined in method

#	Rt.min.	m/z	Rf.	Name	Height	Amount
					ng/mg	
Steranes:						
41)	38.65	217.2	s3	21aa	823	5
42)	40.32	217.2	s3	21bb	701	4
43)	40.45	217.2	s3	22aa	499	3
44)	42.68	217.2	s3	22bb	390	2
45)	49.03	217.2	s3	27dbS	1419	8
46)	49.67	217.2	s3	27dbR	766	5
47)	52.03	218.2	s3	27bbR	1390	8
48)	52.18	218.2	s3	27bbS	842	5
49)	52.58	217.2	s3	27aaR	612	4
50)	53.79	218.2	s3	28bbR	738	4
51)	53.93	218.2	s3	28bbS	972	6
52)	54.90	217.2	s3	29aaS	894	5
53)	55.21	218.2	s3	29bbR	1430	9
54)	55.31	218.2	s3	29bbS	1491	9
55)	55.92	217.2	s3	29aaR	881	5
56)	56.38	218.2	s3	30bbR	209	1
57)	56.42	218.2	s3	30bbS	172	1

#	Rt.min.	m/z	Rf.	Name	Height	Amount
Internal standard (if added)						
1)	46.43	217.2		24baa	2335	26
Diterpanes:						
2)	34.11	191.2	s1	19/3	844	7
3)	36.03	191.2	s1	20/3	347	3
4)	38.14	191.2	s1	21/3	258	2
5)	42.12	191.2	s1	23/3	489	4
6)	43.25	191.2	s1	24/3	238	2
7)	45.52	191.2	s1	25/3	112	1
8)	47.07	191.2	s1	24/4	910	8
9)	47.16	191.2	s1	26/3R	50	0
10)	47.32	191.2	s1	26/3S	56	0
11)	50.82	191.2	s1	28/3R	87	1
12)	51.08	191.2	s1	28/3S	54	0
13)	51.86	191.2	s1	29/3R	81	1
14)	52.16	191.2	s1	29/3S	68	1
Triterpanes:						
15)	53.04	191.2	s1	27Ts	805	7
16)	53.29	177.15	s1	25nor28ab	20848	174
17)	53.71	191.2	s1	27Tm	2241	19
18)	54.07	177.15	s1	25nor29ab	862	7
19)	54.20	191.2	s1	27b	370	3
20)	55.27	191.2	s1	28ab	2874	24
21)	55.49	177.15	s1	25nor30ab	590	5
22)	55.98	191.2	s1	29ab	6051	51
23)	56.08	191.2	s1	29Ts	1132	9
24)	56.32	191.2	s1	30D	697	6
25)	56.77	191.2	s1	29ba	774	6
26)	57.35	191.2	s2	30ab	10997	59
27)	57.71	191.2	s1	30D13	1101	9
28)	57.98	191.2	s2	30ba	1527	8
29)	58.95	191.2	s1	31abS	4801	40
30)	59.14	191.2	s1	31abR	3235	27
31)	59.48	191.2	s1	30G	845	7
32)	59.67	191.2	s1	31ba	834	7
33)	60.17	191.2	s1	32abS	3014	25
34)	60.45	191.2	s1	32abR	1940	16
35)	61.61	191.2	s1	33abS	1999	17
36)	61.97	191.2	s1	33abR	1332	11
37)	63.17	191.2	s1	34abS	1275	11
38)	63.67	191.2	s1	34abR	803	7
39)	64.95	191.2	s1	35abS	743	6
40)	65.68	191.2	s1	35abR	478	4

Saturated biomarkers

GC/MS detection HP-6890/5973
Compound data



Norsk Hydro E&P Research Centre, Bergen, Norway
Petroleum Geochemistry Laboratories

Data file name: 3122_2S.D
Sample name: 35/11-12 3122.2m sat
Data File Path: C:\HPCHEM\1\DATA\35_11_12\
Misc. info.:

Vial no.: 11
Method: MSD_S_E2
Operator: marian
Date: 6 Sep 2000 8:21

Response curve y = ax
Response factor groups: s1...s3, responses as defined in method

#	Rt.min.	m/z	Rf.	Name	Height	Amount
Steranes:						
41)	38.65	217.2	s3	21aa	679	8
42)	40.31	217.2	s3	21bb	482	6
43)	40.43	217.2	s3	22aa	324	4
44)	42.67	217.2	s3	22bb	226	3
45)	49.00	217.2	s3	27dbS	718	9
46)	49.64	217.2	s3	27dbR	431	5
47)	51.99	218.2	s3	27bbR	776	9
48)	52.15	218.2	s3	27bbS	333	4
49)	52.54	217.2	s3	27aaR	250	3
50)	53.76	218.2	s3	28bbR	289	3
51)	53.88	218.2	s3	28bbS	426	5
52)	54.87	217.2	s3	29aaS	611	7
53)	55.17	218.2	s3	29bbR	1052	13
54)	55.27	218.2	s3	29bbS	1023	12
55)	55.88	217.2	s3	29aaR	639	8
56)	56.35	218.2	s3	30bbR	75	1
57)	56.40	218.2	s3	30bbS	59	1

#	Rt.min.	m/z	Rf.	Name	Height	Amount
					ng/mg	
Internal standard (if added)						
1)	46.42	217.2		24baa	213	23
Diterpanes:						
2)	34.06	191.2	s1	19/3	14	1
3)	36.04	191.2	s1	20/3	20	2
4)	38.09	191.2	s1	21/3	27	2
5)	42.06	191.2	s1	23/3	70	6
6)	43.20	191.2	s1	24/3	31	2
7)	45.47	191.2	s1	25/3	20	2
8)	47.03	191.2	s1	24/4	35	3
9)	47.11	191.2	s1	26/3R	14	1
10)	47.25	191.2	s1	26/3S	15	1
11)	50.77	191.2	s1	28/3R	14	1
12)	51.01	191.2	s1	28/3S	13	1
13)	51.80	191.2	s1	29/3R	10	1
14)	52.12	191.2	s1	29/3S	21	2
Triterpanes:						
15)	52.98	191.2	s1	27Ts	68	5
16)	53.23	177.15	s1	25nor28ab	53	4
17)	53.66	191.2	s1	27Tm	75	6
18)	54.03	177.15	s1	25nor29ab	18	1
19)	54.13	191.2	s1	27b	20	2
20)	55.22	191.2	s1	28ab	26	2
21)	55.49	177.15	s1	25nor30ab	18	1
22)	55.92	191.2	s1	29ab	242	19
23)	56.02	191.2	s1	29Ts	82	7
24)	56.27	191.2	s1	30D	35	3
25)	56.74	191.2	s1	29ba	35	3
26)	57.31	191.2	s2	30ab	480	25
27)	57.65	191.2	s1	30D13	44	4
28)	57.93	191.2	s2	30ba	69	4
29)	58.89	191.2	s1	31abS	175	14
30)	59.08	191.2	s1	31abR	128	10
31)	59.44	191.2	s1	30G	30	2
32)	59.62	191.2	s1	31ba	30	2
33)	60.13	191.2	s1	32abS	110	9
34)	60.41	191.2	s1	32abR	87	7
35)	61.57	191.2	s1	33abS	88	7
36)	61.94	191.2	s1	33abR	60	5
37)	63.11	191.2	s1	34abS	51	4
38)	63.63	191.2	s1	34abR	38	3
39)	64.88	191.2	s1	35abS	31	2
40)	65.60	191.2	s1	35abR	26	2

Saturated biomarkers

GC/MS detection HP-6890/5973
Compound data



Norsk Hydro E&P Research Centre, Bergen, Norway
Petroleum Geochemistry Laboratories

Data file name: 3123_1S.D
Sample name: 35/11-12 3123.1m sat
Data File Path: C:\HPCHEM\1\DATA\351112\
Misc. info.:

Vial no.: 2
Method: MSD_S_E2
Operator: marian
Date: 11 Sep 2000 17:24

Response curve y = ax
Response factor groups: s1...s3, responses as defined in method

#	Rt.min.	m/z	Rf.	Name	Height	Amount
					ng/mg	
Steranes:						
41)	38.60	217.2	s3	21aa	14	2
42)	40.28	217.2	s3	21bb	22	3
43)	40.38	217.2	s3	22aa	17	2
44)	42.62	217.2	s3	22bb	13	2
45)	48.95	217.2	s3	27dbS	35	4
46)	49.59	217.2	s3	27dbR	24	3
47)	51.95	218.2	s3	27bbR	39	5
48)	52.08	218.2	s3	27bbS	26	3
49)	52.48	217.2	s3	27aaR	24	3
50)	53.70	218.2	s3	28bbR	26	3
51)	53.83	218.2	s3	28bbS	29	3
52)	54.81	217.2	s3	29aaS	23	3
53)	55.12	218.2	s3	29bbR	40	5
54)	55.22	218.2	s3	29bbS	37	4
55)	55.83	217.2	s3	29aaR	25	3
56)	56.30	218.2	s3	30bbR	10	1
57)	56.32	218.2	s3	30bbS	9	1