

Our date  
2012-12-18

Our reference  
AU-EXP NOR ELNS-00035

Administrative officer

Your date

Your reference

Oljedirektoratet  
Att: Inger Madland  
Postboks 600  
4003 Stavanger

### **PL543 – Relinquishment report**

Reference is made to the letter sent to the MPE dated 05.11.2012 (our reference AU-EXP NOR ELNS-00035) regarding relinquishment of production license 543 (PL543)

#### **Introduction.**

A drill or drop decision needed to be taken by 19<sup>th</sup> November 2012. The partnership unanimously decided to relinquish the license.

#### **Background and License history**

PL543 was awarded on 19<sup>th</sup> February 2010 during the 2009 TFO with Statoil AS (50%) as Operator and ExxonMobil (50%) as partners.

The initial period for PL543 expires 19<sup>th</sup> February 2016. The work obligations were to decide on a drill or drop within 19<sup>th</sup> February 2012. An application for a deadline extension was sent to the authorities 19<sup>th</sup> November 2011 and was approved. The new deadline for drill or drop decision was then 19<sup>th</sup> November 2012. A second work commitment was to decide if a PDO should be prepared within 19<sup>th</sup> February 2016.

The decision was taken to relinquish production license 543 and a letter was sent to the authorities on 7<sup>th</sup> November 2012.

PL543 is located in Block 16/7, on the terrace to the east of the prolific Sleipner province. The license area is 5.434 km<sup>2</sup>. One prospect, Knappen, has been mapped in the license.

#### **Technical work and meetings**

Technical work has been undertaken based on newly reprocessed 3D seismic data. The main focus for this work was the Knappen prospect, a 4-way closure at Hugin Fm level (middle Jurassic).

Management (MC), Exploration Committee (EC) and work meetings were held:

- MC meeting: 4<sup>th</sup> May 2010
- Combined MC/EC meeting: 3<sup>rd</sup> December 2010
- EC work-meeting: 30<sup>th</sup> March 2011
- EC work-meeting: 30<sup>th</sup> August 2011
- MC meeting: 15<sup>th</sup> November 2011
- MC meeting: 16<sup>th</sup> November 2012

Our date  
2012-12-18

Our reference  
AU-EXP NOR ELNS-00035

Administrative officer

Your date

Your reference

### **Prospect evaluation**

The prospectivity in this license is reduced to Knappen. Knappen is located partly in PL543 (23%), PL072B (73%) and in open area (4%). When the prospect was described in the APA 2009, the level of interest was the Middle Jurassic, clastic Hugin Fm.

Since the award of PL543, the prospect has been re-evaluated. The evaluation includes:

- Processing of new seismic data
- Geophysical work including well ties and AVO study
- Seismic interpretation at key levels (Cretaceous, Jurassic and Triassic)
- Depth conversion
- Biostratigraphical study
- Migration study
- Fault analysis
- Volumetric computation

The evaluation has changed the prospect model. The main reservoir is now the poorer Triassic Skagerrak Fm. The volumes are given below. The main risk for the prospect is on the source migration because no or small traces of hydrocarbon were found in the neighboring wells. The trap seal and reservoir presence are risked. The risk on the trap seal is linked to the results of the fault seal analysis which shows that the main fault in the prospect should be sealing and should be able to hold a 80-100m hydrocarbon column. The risk on the reservoir presence is due to the fact that existing structures nearby do not have Skagerrak sands. The total probability of discovery for Knappen is 21,6%.

### **Resources**

The volumes calculations were based on a gas case at the Skagerrak level. The mean recoverable volume for Knapper is 8,7 MSm<sup>3</sup> oe.

### **Technical/economical evaluations**

The development plan would consist of 3 producers with a tie-in via Sygun to Sleipner A, which gave a positive Net Present Value (NPV)

### **Summary and conclusion**

The prospectivity within the license is limited and the partnership did not wish to conduct further work in PL543. The partnership therefore unanimously decided to relinquish the license. By taking a drop decision, the partnership has fulfilled the work commitments.

Our date  
2012-12-18

Our reference  
AU-EXP NOR ELNS-00035

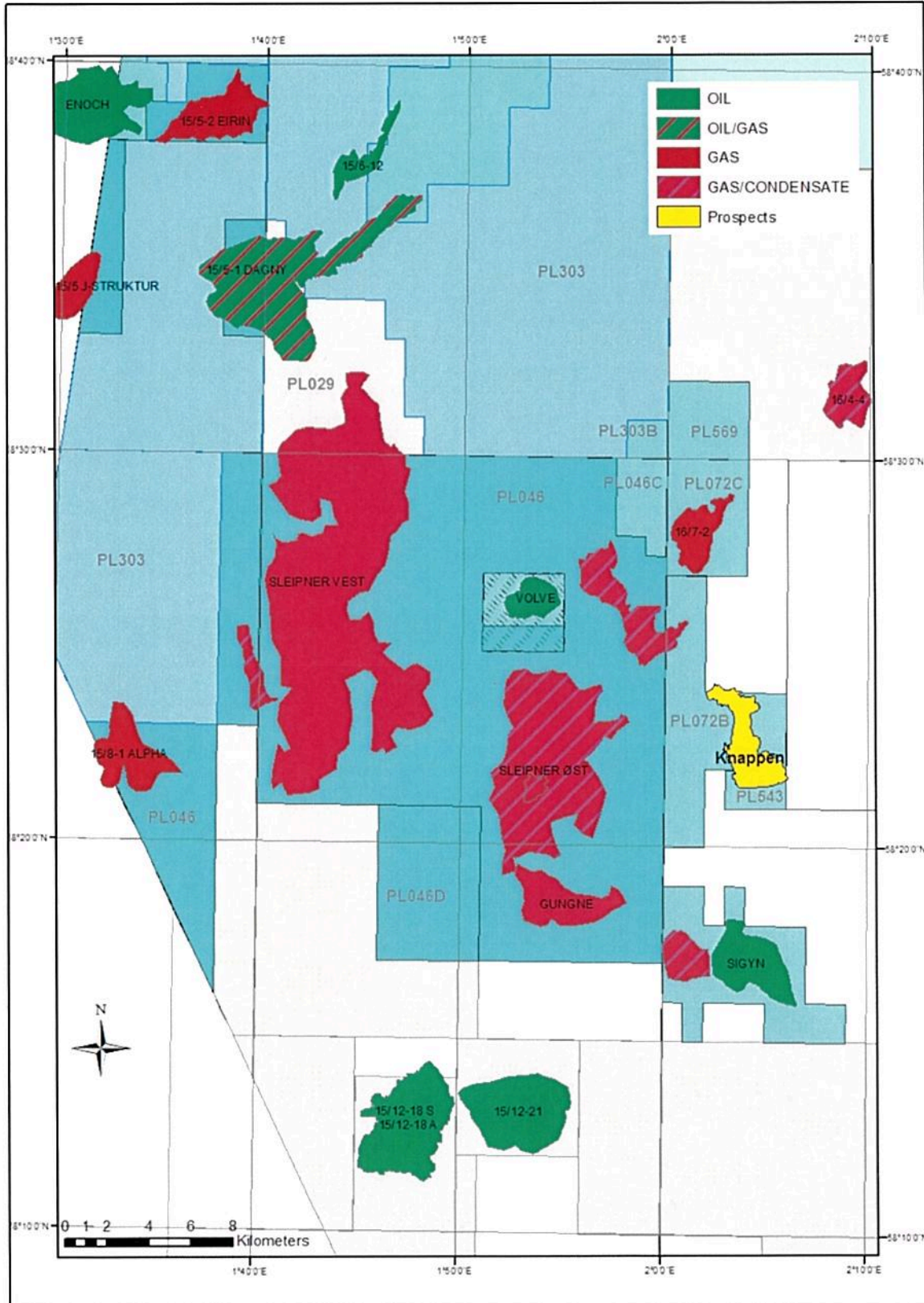
Administrative officer

Your date

Your reference

Statoil Petroleum AS

3 of 5



Our date  
2012-12-18

Our reference  
AU-EXP NOR ELNS-00035

Administrative officer

Your date

Your reference

Figure 1: Map showing the location of the Knappen prospect

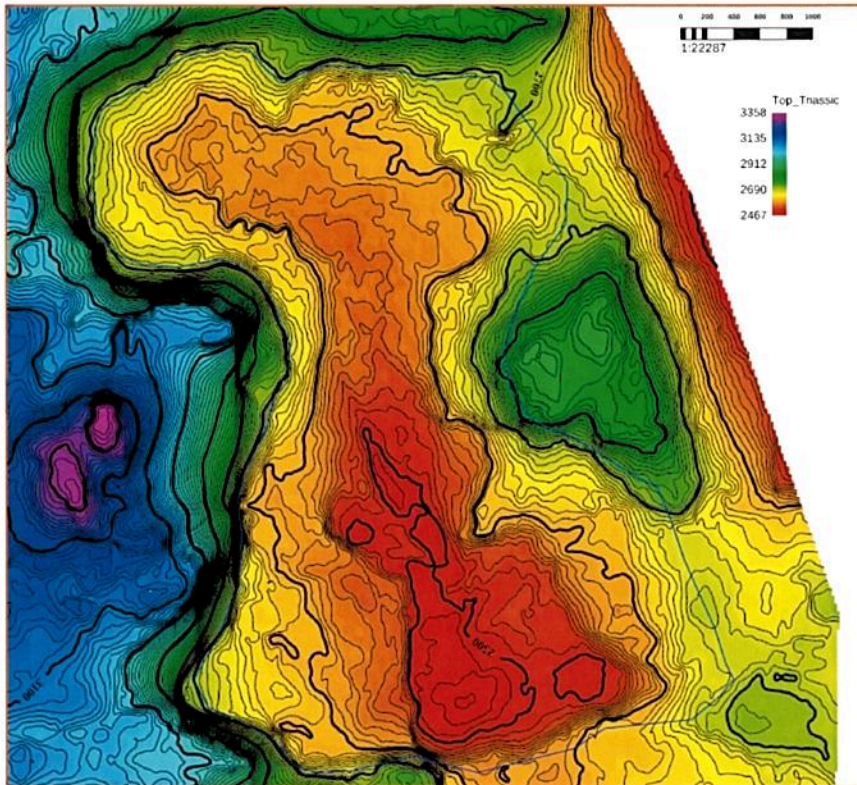


Figure 2: Top Triassic depth map

Our date  
2012-12-18

Our reference  
AU-EXP NOR ELNS-00035

Administrative officer

Your date

Your reference

Statoil Petroleum AS

5 of 5

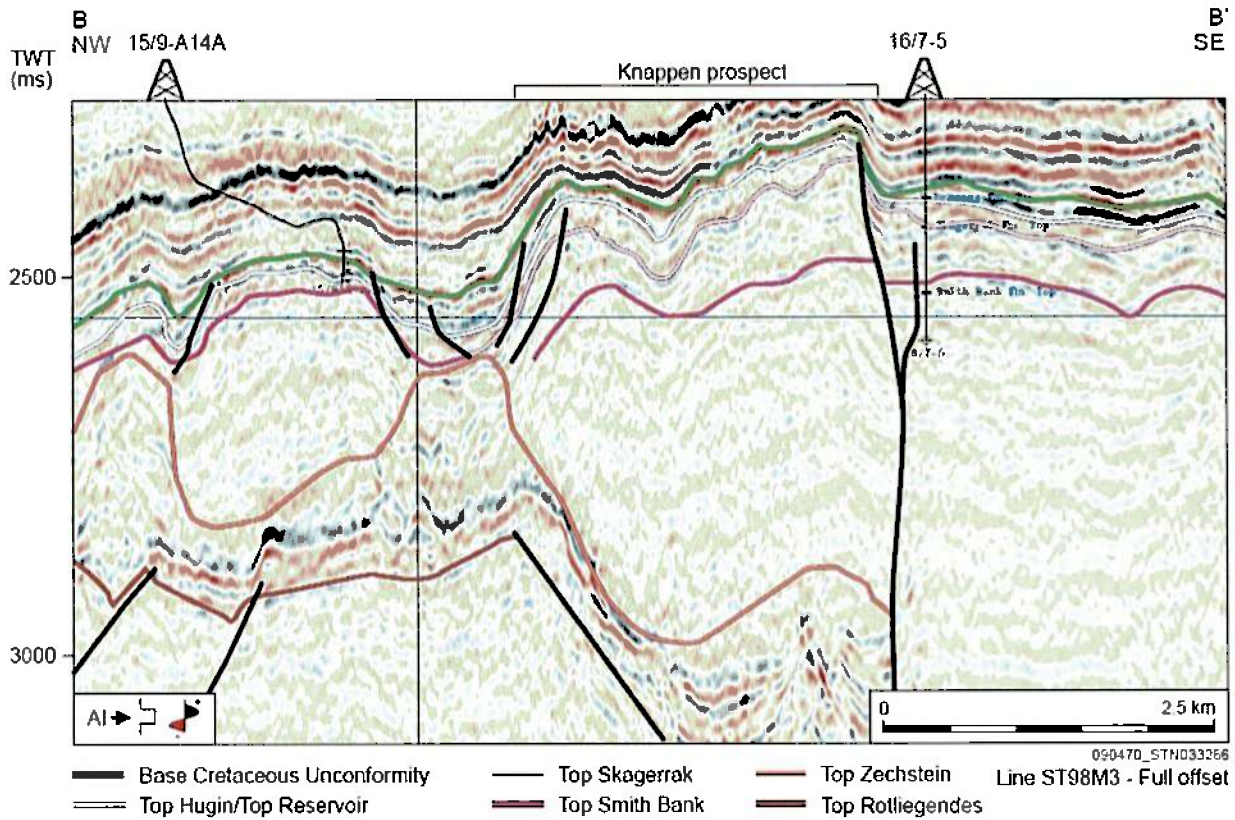


Figure 3: SW-NE seismic section through the prospect

