

Doc. Reference DM #1200634

Title PL102E Relinquishment Report

Description This report summarizes seismic and well data base for PL102E. It also summarizes studies performed during the licenses period.

	Date	Name	Position	Signature
Prepared by:	02.06.25	Geir Mikkelsen	Lead Geophysicist	Stephanie BEQUET J0104719 <small>Digitally signed by Stephanie BEQUET (J0104719) DN: CN = Stephanie BEQUET, J0104719, C = FR, O = TOTAL, OU = TOTAL AUTHENTICATION, EMAIL = stephanie.bequet@total.com, serial = 123456789, date: 2025.06.02 14:43:48 +02'00'</small>
Verified by:	02.06.25	Yngvil Oftebro Enge	PL102E Chairman	Yngvil-Oftebro ENGE <small>Digitally signed by Yngvil-Oftebro ENGE DN: CN = Yngvil Oftebro Enge, O = TOTAL, OU = TOTAL AUTHENTICATION, EMAIL = yngvil.oftebro@total.com, serial = 123456789, date: 2025.06.02 12:28:55 +02'00'</small>
Approved by:	02.06.25	Mikkel Fjeldheim	HSEQ & Operations Director	Mikkel Fjeldheim <small>Digitally signed by Mikkel Fjeldheim DN: CN = Mikkel Fjeldheim, O = TOTAL, OU = TOTAL AUTHENTICATION, EMAIL = mikkel.fjeldheim@total.com, serial = 123456789, date: 2025.06.02 14:48:18 +02'00'</small>
Revision	Date	Reason for issue:		
01	02.06.25	For use		

Contents

1	LICENSE HISTORY	3
2	DATABASE OVERVIEW	5
2.1	SEISMIC DATA	5
2.2	WELL DATA.....	6
3	RESULTS OF GEOLOGICAL AND GEOPHYSICAL STUDIES	7
4	PROSPECT UPDATE	7
5	TECHNICAL ASSESSMENT	7
6	CONCLUSION.....	7

1 License History

PL102E is located in block 25/6 in the North Sea.

The license was awarded to Total E&P Norge AS (now TotalEnergies E&P Norge AS) as Operator on 03 February 2012 through the APA licensing round in 2011, with the partners Statoil Petroleum AS, Centrica Resources (Norge) AS and Petoro AS.

The license partnership at the time of relinquishment is shown in Table 1.1

Table 1.1: Ownership in PL102E at time of relinquishment (31.12.25)

Licensees	Ownership in PL102E
TotalEnergies E&P Norge (Op)	40%
Petoro	30%
Orlen Upstream Norway	30%

The license was applied for as an extension to PL102 which contained the Skirne field development project. The most recent outline of PL102E is shown in Figure 1.1.

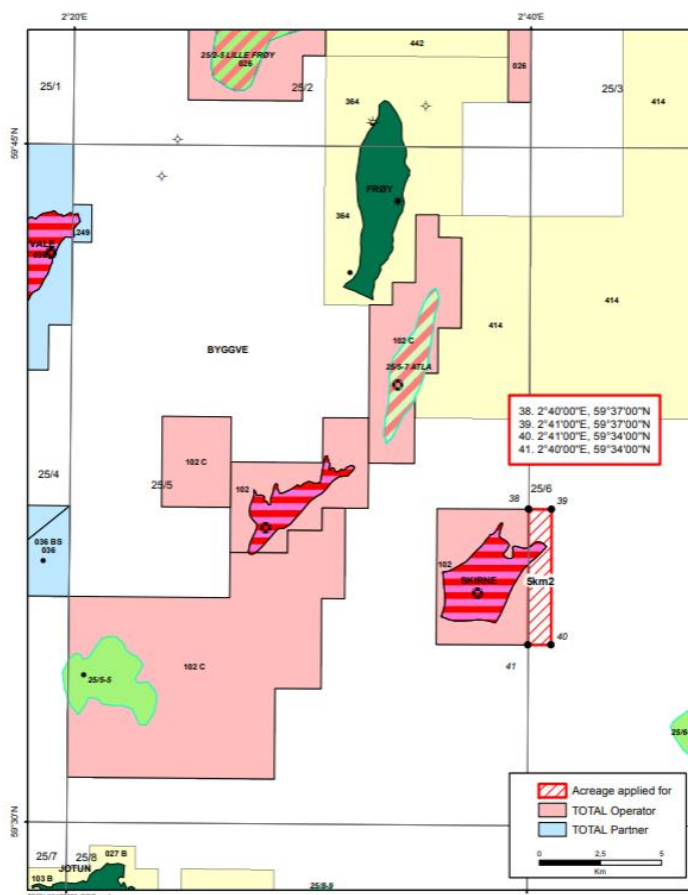


Fig. 1.1: PL102E field outline.

Gas and condensate from the PL102E area has been produced from the Skirne well in PL102. PL102 consists of two gas and condensate discoveries in block 25/5, Skirne and Byggve, located in the central part of the North Sea, about 140 km from mainland Norway. Skirne was discovered in 1990, while Byggve was discovered in 1991. The Plan for Development and Operation ("PDO") was approved by the ministry on 05.07.02.

The field was developed by two single wells (Skirne and Byggve) producing via a 20 km long pipeline to the Heimdal field (Equinor/Gassco operated) for processing and export. Production started in March 2004. Production from PL102/PL102E has mainly been gas and some condensate. Gas export from Heimdal was via Vesterled to St. Fergus in the UK while oil/condensate was exported by pipeline to Brae in the UK sector, and via the Forties system to Cruden Bay in the UK.

Byggve was shut in October 2012, while Skirne ceased production in May 2022 due to well flooding. The total recoverable resources were initially estimated at 6.7 billion Sm³ of gas and 1.59 million Sm³ of condensate. The actual production exceeded expectations, reaching 11.47 billion Sm³ of gas and 2.48 million Sm³ of condensate.

As the operator of PL102/PL102E, TotalEnergies EP Norge applied for the relinquishment of the licenses in a letter to the Ministry of Energy on August 27, 2024. The Ministry confirmed the relinquishment on October 18, 2024, with the licenses officially expiring on January 1, 2025.

The Skirne field is now being decommissioned as part of the Skirne, Byggve and Atla (SBA) Decommissioning Project. The SBA Decommissioning Plan was approved by the Ministry of Energy (ME) in 2016. The deadline set by ME for completion of the project is end 2028. Flowlines and umbilicals are buried and covered, and the subsea structures have overtrawlable protection structures, in accordance with the PDO. Cleaning of pipelines and control cables, as well as physical disconnection of the pipelines from the wellheads and the main umbilical from the Heimdal platform, was performed in July and August 2023. The wells will be permanently plugged in 2026, and the subsea structures will be removed in 2027/2028 according to the approved decommissioning plan.

2 Database Overview

2.1 Seismic data

The reference seismic is EL9201 and NVG09-10 as shown in Figure 2.1.

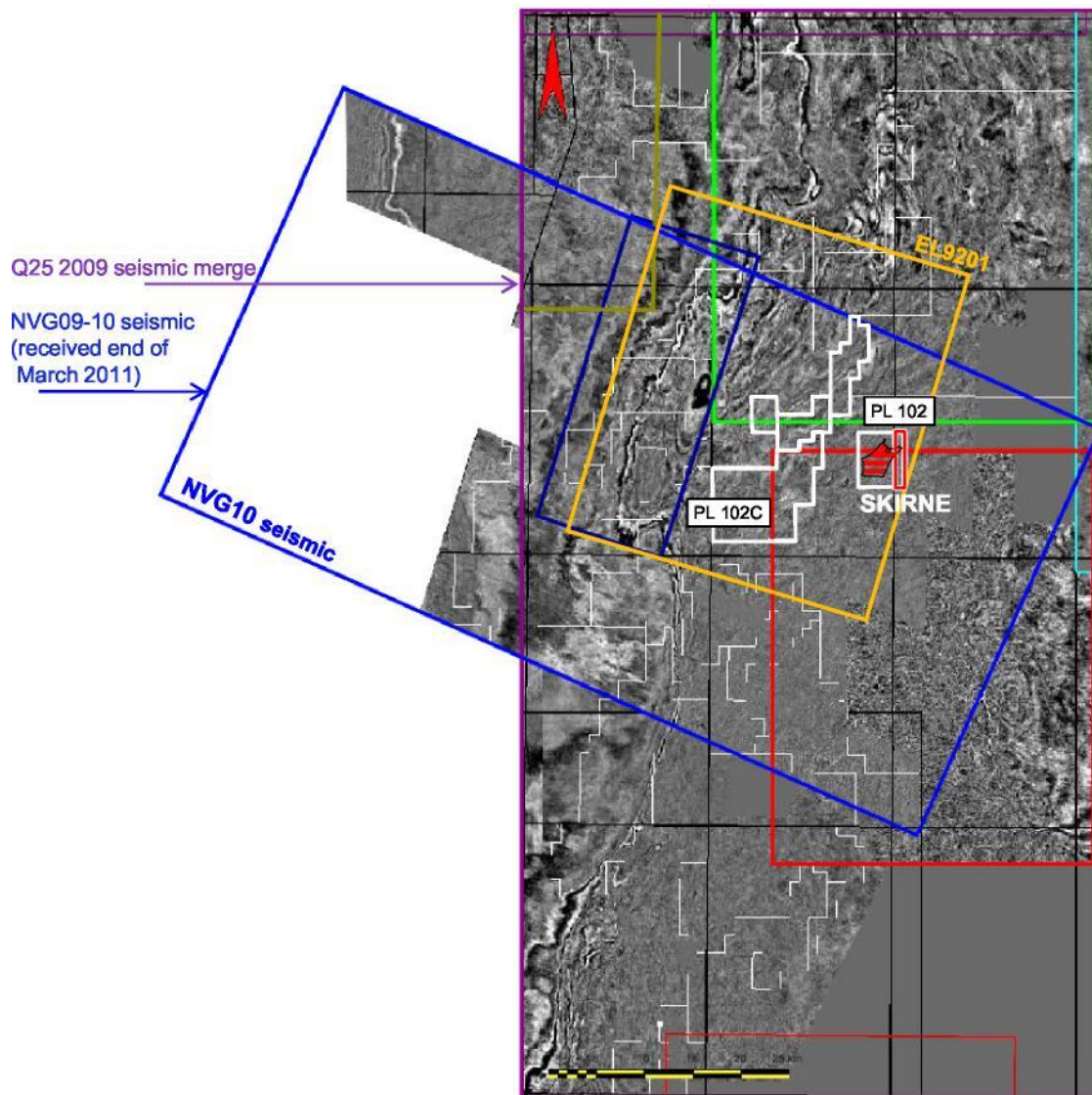


Figure 2.1: Seismic coverage over PL102E.

2.2 Well Data

No new wells were included in the technical work conducted after the license award. Below is an overview of the wells used in the license application.

Numerous wells are available in the area, most of them drilled in the past by either Elf Petroleum Norge or Total E&P Norge. This well database will provide reliable information for the evaluation of the different reservoir series.

The main key wells, representative of the area applied for, are):

- 25/4-1 & 5: drilled in 1972 and 1981 by Elf Petroleum Norge and which are the Heimdal reference wells for both Tertiary Heimdal Fm and Lower and Middle Jurassic Statfjord Fm and Brent Gp respectively. 25/4-1 was the Heimdal discovery well (now operated by Statoil).
- 25/2-5 & 13: drilled in 1976 and 1990 by Elf Petroleum Norge, and which are the discovery and appraisal wells of the Rind discovery at the Statfjord and Brent levels.
- 25/4-6S: drilled in 1991 by Elf Petroleum Norge which discovered the Vale gas and condensate field, now operated by Statoil (PL036).
- 25/4-9S: Vilje discovery well drilled in 2003 by Norsk Hydro.
- 25/5-1, 1A & 2: Froy discovery and appraisal wells drilled in 1987 and 1989 by Elf Petroleum Norge. Froy has been produced by Elf Petroleum Norge from 1995 to 2001 and the Licence is now operated by Det Norske.
- 25/5-3: Skirne discovery well drilled in 1990 by Elf Petroleum Norge, still operated by TEPN.
- 25/5-4: Byggve discovery well drilled in 1991 by Elf Petroleum Norge, still operated by TEPN.
- 25/5-7: Atla discovery drilled in 2010 by TEPN (PDO just submitted to MPE by TEPN).

These wells allow a very good calibration of the different seismic markers, although the Top of the Brent itself is very often quite difficult to identify and pick. The definition and mapping of the different seismic markers as calibrated on reference wells will be reviewed in section 2.2.1 "Seismic mapping".

3 Results of Geological and Geophysical Studies

The time to depth conversion was reviewed; however no new velocity model was applied or used to generate a new time to depth conversion.

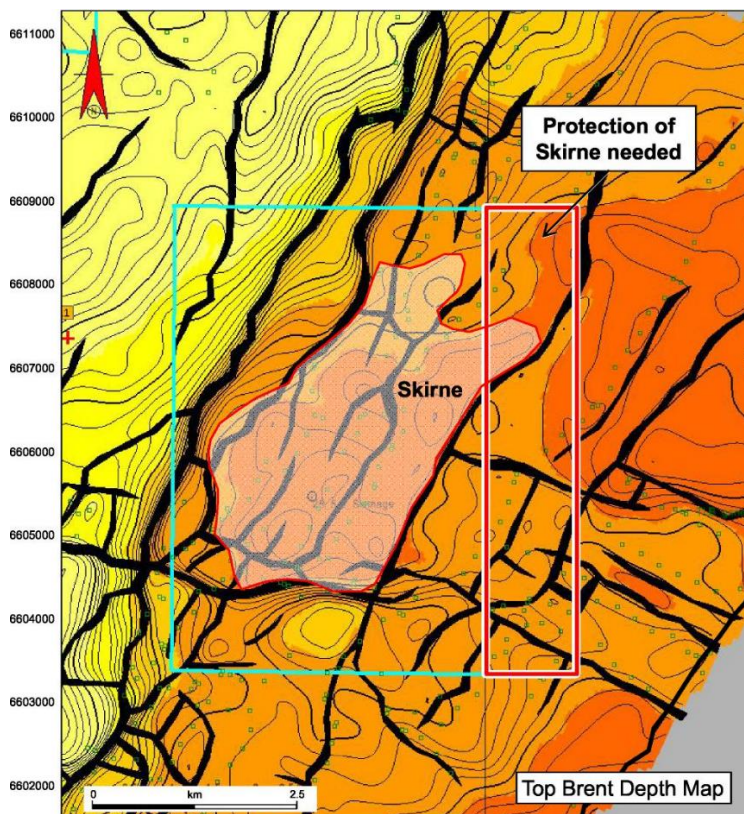


Figure 3.1: Top Berent Depth Map with Skrine outline into PL102E area.

4 Prospect Update

As no new velocity model was applied, the “prospect” interpretation remained unchanged.

5 Technical Assessment

No further leads nor prospect have been identified within the license area.

6 Conclusion

PL 102E was secured as a protection area, as the gas contact in Skirne most likely extended beyond the boundary of PL102.

Following the award, Skirne’s production was closely monitored, and some limited geological, geophysical and reservoir work were performed. Production was shut down in May 2022, and the Ministry of Energy announced in October 2024 the relinquishment of PL102 and PL102E effective from January 1, 2025.