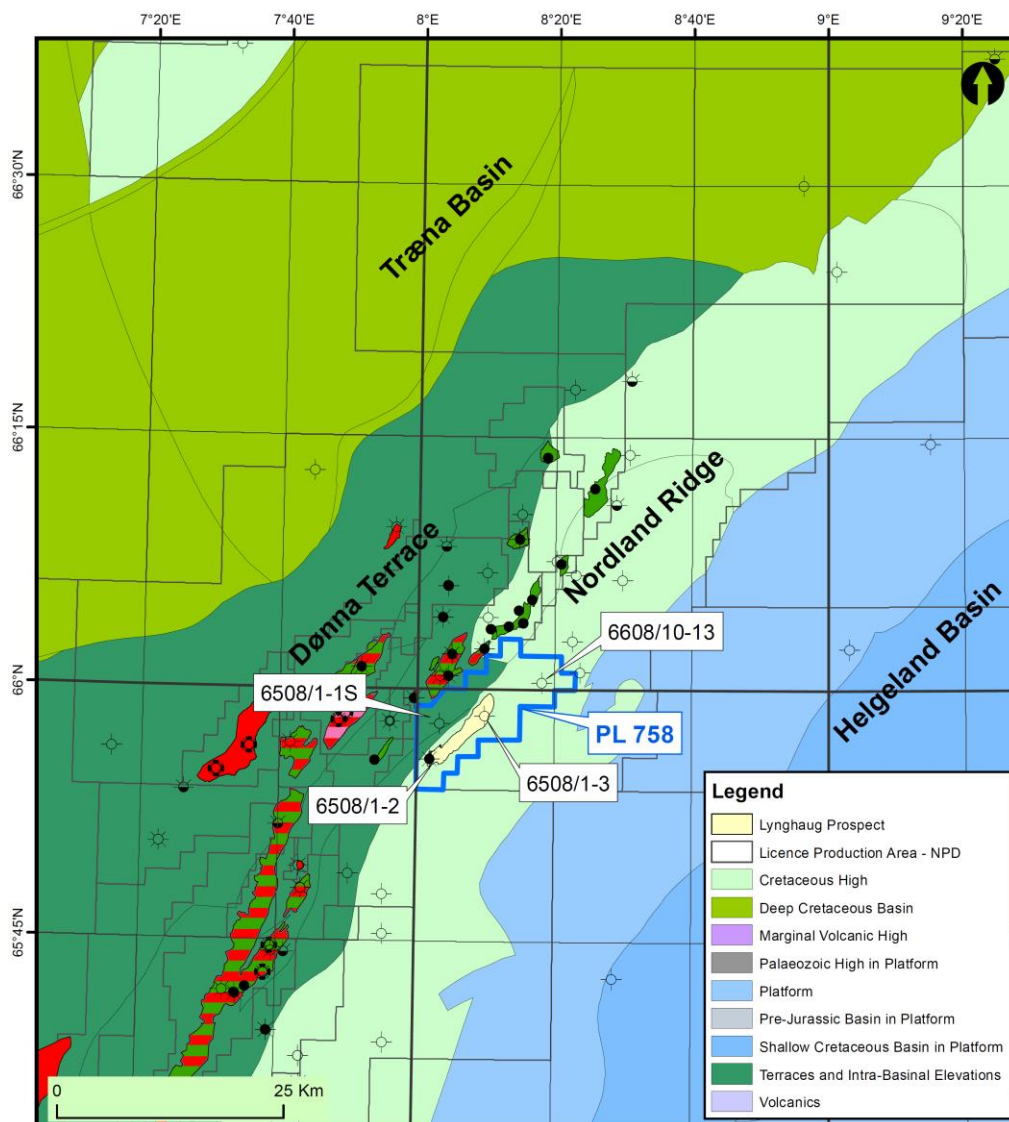




Capricorn Norge AS

PL 758 licence Full Relinquishment Status Report NPD



Rev No:	Date	Description / Changes from previous version	Author(s)	Approved
1.1	07.01.2020	For review	R. McDonald, P. Bailly	L. Hansen
1.1	16.01.2020	Issued to NPD	R. McDonald, P. Bailly	L. Hansen

TABLE OF CONTENTS

1. HISTORY OF THE PRODUCTION LICENCE	3
2. DATABASE OVERVIEWS	5
3. RESULTS FROM GEOLOGICAL AND GEOPHYSICAL STUDIES	7
4. PROSPECT UPDATE REPORT	10
5. LYNNGHAUG WELL RESULTS	12
6. REMAINING PROSPECTIVITY	13
7. TECHNICAL EVALUATION	21
8. CONCLUSION	21
APPENDIX A: PROSPECT AND LEAD DATA SHEETS	22

1. History of the Production licence

Licence PL 758, covering part of blocks 6508/1, 6608/10, and 6608/11, is located on the Nordland Ridge in the Norwegian Sea area, on the Norwegian Continental Shelf (NCS), approximately 200 km west of Brønnøysund. Licence area is 135.2 km². Water depth in the licence is approximately 390 m.

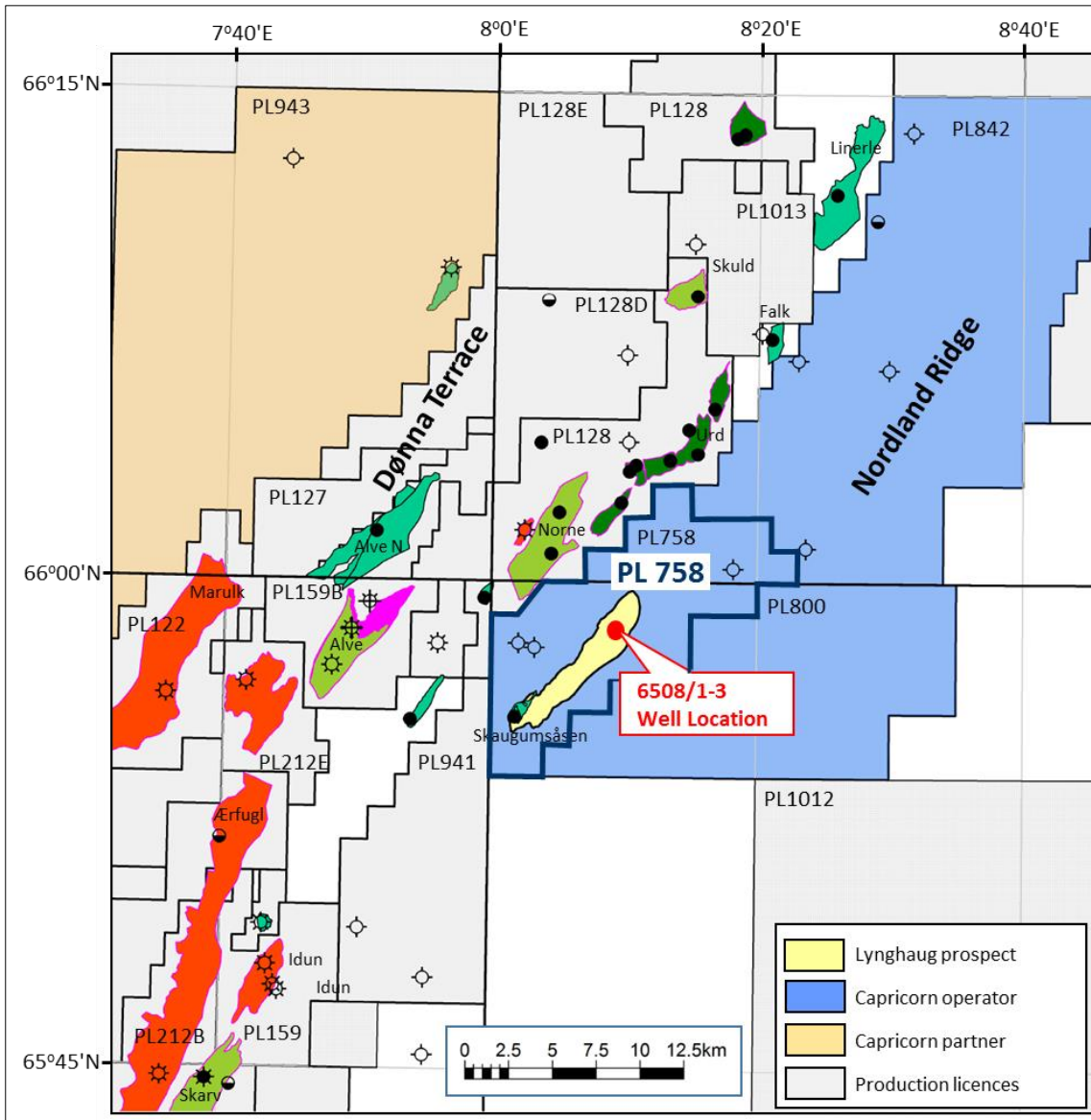


Figure 1.1: PL 758 Lynghaug - licence location map with main prospect Lynghaug indicated on the map.

The licence was awarded as part of the 2013 APA Licensing Round (Award date: 7th February 2014), with the first 2-year term (drill or drop decision) due to expire on 7th February 2016. The drill or drop decision date was subsequently extended until 7th August 2017. The firm work programme included purchase of 3D seismic data and G&G studies within 2 years, and then proceed to Drill or Drop decision. As part of this commitment, the licence conducted G&G Studies including Basin Modelling and Fault Seal Analysis. In addition, 3D seismic reprocessing of the RS1002 dataset was conducted to reduce multiple effects. Enquest Norge AS were the initial operator in the licence until they farmed out completely to Lundin Norway AS who became operator, effective on 30th October 2015. Lundin Norway remained operator until 31st January 2018, when they farmed out 15 % of licence equity to Capricorn Norge AS who then also became operator of the licence. From 31st January 2018, operator Capricorn Norge held 50 % equity in the licence, Skagen44 held 30 %, and Lundin Norway held the remaining 20 %.

The Table below summarizes the activity of the licence during the first phase, with a summary of the ECMC meetings and Work meetings held:

Meeting Title	Date	Description
MC Meeting	03/03/2014	Establishment of the licence; Common database; Work programme; Budget.
EC Meeting	08/04/2014	Review of the prospectivity; additional prospectivity to the east of PL 758.
Work Meeting	20/05/2014	Discussion of multiples within the HVG2012 3D seismic dataset
MC Meeting	01/10/2014	2014 work programme status, presentation by Skagen44, 2014 APA AMI application update, proposed 2015 work program and budget.
Work Meeting	06/11/2014	Review of Geokinetics reprocessing testing of HVG2012M.
EC Meeting	02/12/2014	Summary of G&G work and volumes for PL 758 prospectivity by Skagen44.
Work Meeting	27/01/2015	Comparison of AVO effects on RS1002 and HVG2012M datasets, extremely difficult to remove multiples in the data.
ECMC Meeting	07/07/2015	Enquest announce divestment of licence equity, Budgets, Technical presentation by Skagen44, updated AVO on Røsslyng & Tinghaug prospects.
ECMC Meeting	17/11/2015	Enquest out of the licence, Lundin new operator. Budget status and 2016 budget proposal, Technical presentation by Skagen44. Focus on Basin Modelling by Lundin.
Work Meeting	03/05/2016	Geokinetics reprocessing status of RS1002, G&G work status, Capricorn state that they believe the flat event is an artifact, Petroleum systems modelling.
ECMC Meeting	30/11/2016	Seismic reprocessing status (RS1002LNR16), G&G work status including Fault Seal Analysis done by Lundin. Partners agreed to apply for a 6-month extension to the drill or drop decision due to late completion of reprocessing.
ECMC Meeting	27/04/2017	Lundin presented their view on the licence prospectivity, and Skagen44 presented work done on viscosity of the expected oil and the migration story.
ECMC Meeting	20/11/2017	Presentation on Lynghaug prospect G&G and volumetrics and risking by Capricorn Norge. Presentation on syn-rift geology by Skagen44.
EC Meeting	08/02/2018	First EC meeting with Capricorn Norge as Operator. Proposal and partner vote on Lynghaug well location. 2:1 vote in favour of 'Location A'.
ECMC Meeting	15/06/2018	Licence status, focus on well planning status, results of external (Schlumberger) pore pressure study, site survey planning status, and well cost. Update of ongoing G&G work on additional licence prospectivity.
EC Meeting	22/08/2018	Presentation and request for approval of Formation Evaluation Programme for the Lynghaug well
Work Meeting	10/10/2018	Well engineering and HSE work meeting for planning of the Lynghaug well
Work Meeting	17/10/2018	G&G work meeting to discuss licence prospectivity and Lynghaug follow up potential
ECMC Meeting	27/11/2018	Update of well planning and update of ongoing licence prospectivity assessment. Proposal and vote in favour of Fault Seal Analysis study.
EC Meeting	10/04/2019	Status of well planning (Key milestones, Organization, Long Lead Items, Contracts, Logistics, Well Engineering, Formation Evaluation, HSE plans)
DWOP Meeting	08/05/2019	Licence partners attend 'Drill Well On Paper' meeting organized by Capricorn Norge.
Well Risk Assessment Meeting	15/05/2019	Licence partners attended a Well Specific Risk Assessment meeting organized by Capricorn Norge.
ECMC Meeting	11/06/2019	Pre-spud update on well planning and operations. Preliminary results of Fault Seal Analysis study.
Post Well EC Meeting	12/09/2019	Presentation of the drilling operations and results of the Lynghaug well.
ECMC Meeting	18/11/2019	Final ECMC Meeting summarizing licence prospectivity, volumes and chance of success, and BoK recommendation and vote to drop the licence.

Table 1.1: Summary of meetings held in PL 758.

Following the last ECMC Meeting, the JV partners decided to surrender PL 758 based on the following points:

- The Lynghaug prospect was drilled dry
- Remaining prospectivity is too small, too high risk, or both.
- Migration is the key risk in the licence and this risk has only increased following the dry well result.

2. Database overviews

2.1 Seismic data

As part of the work programme associated to the first phase, the MC3D-HVG2012M survey was purchased from PGS. The RS1002 dataset was then reprocessed by Geokinetics, overseen by Lundin, after Lundin took over operatorship, which was then called the RS1002LNR16 3D dataset. The main aim of the reprocessing in the licence was to investigate and remove multiple effects in the data that were the possible cause of a flat event identified at 1500 msec. HVG2012M was the seismic survey used to evaluate the Lynghaug prospect. CAP19M01 was an extension of the same reprocessing sequence applied to the RS1002 data used to produce the CAP17M01 dataset (neighbouring PL842 reprocessing work program). The CAP19M01 survey was used to define the southern extension of the Lervig lead and associated seismic amplitude anomaly. Subsequent calibration to well 6608/11-9 (Godalen prospect, PL 842) revealed that the CAP17M01 and CAP19M01 datasets have issues with amplitude balancing and cannot be relied upon for AVO work.

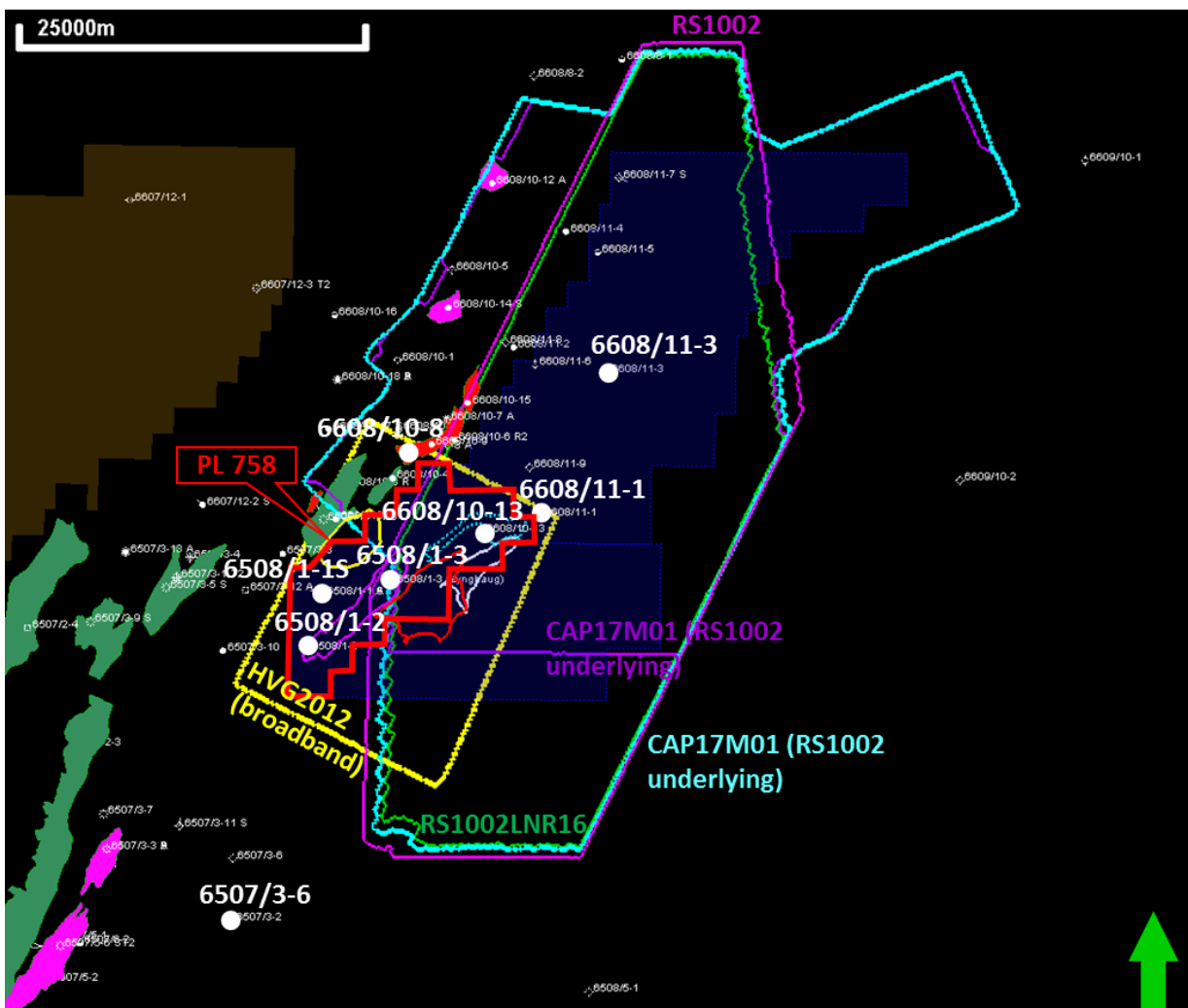


Figure 2.1: PL 758 seismic database with key wells highlighted.

The Table below summarizes the seismic database used for evaluation of the PL 758 licence.

Survey Name	Type Data: 2D/3D	Acq year	Proc Year	Public/Multiclient	NPDID
HVG2012M	3D seismic	2012	2013	PGS Multiclient	7616
RS1002	3D seismic	2002	2002	Released	7188
RS1002LNR16	3D seismic	2002	2016	PL 758/PL 800	-
CAP17M01	3D seismic	2002	2017	PL 842	-
CAP19M01	3D Seismic	2002	2019	PL 758/PL 800	-

Table 2.1: PL 758 Seismic Database (note that CAP17M01 and CAP19M01 were not in the Common Database)

2.2 Well data

One exploration well (6508/1-3) was drilled in the PL 758 licence. In addition, the licence contained three exploration wells (6508/1-1A, S, 6508/1-2, and 6608/10-13) drilled by previous operators of the acreage. The table below shows only the wells used for the technical evaluation, and all of these were included in the common database.

Well Name	Year	TD (depth m TVDSS), Formation, Age	Status
6508/1-3	2019	1663 m, Åre Fm., Lower Jurassic	Not Released
6508/1-2	2011	1770 m, Tilje Fm., Lower Jurassic	Released
6608/10-13	2009	1420 m, Åre Fm., Lower Jurassic	Released
6508/1-1S	1999	2724 m, Åre Fm., Lower Jurassic	Public
6608/11-1	1986	1595 m, 'Grey Beds', Upper Triassic	Public
6608/11-3	2002	2007 m, 'Grey Beds', Upper Triassic	Released
6507/3-6	2009	1625 m, Åre Fm., Lower Jurassic	Released
6608/10-2	1992	3654 m, Åre Fm., Lower Jurassic	Public
6608/10-8	2002	2626 m, Åre Fm., Lower Jurassic	Released

Table 2.2: PL 758 Well Database listed in order of relevance to the licence G&G work.

3. Results from geological and geophysical studies

The PL 758 licence performed many geological and geophysical studies. The description of these and the main results are listed below:

1. Purchase and map 3D seismic data across the PL758 area as per the work programme for the licence, 2014

- **Objectives:**
 - Improve prospect and lead definition within the licence.
 - Evaluate the trapping potential with high resolution mapping of faults in the area.
 - Remove multiple effects in the data.
- **Results:**
 - Better structural definition and ability to perform AVO studies.
 - Reprocessing enabled understanding and removal of multiple energy in the dataset.

2. Reprocessing of RS1002 3D Seismic Dataset (Lundin), 2016

- **Objectives:**
 - Remove multiple effects and noise in the data.
 - Completed as part of a regional evaluation of the area.
- **Results:**
 - Reprocessing enabled understanding and removal of multiple energy in the dataset.
 - This also allowed greater understanding of the greater Nordland Ridge area to the north and east.

3. Petroleum System Modelling (Lundin study), 2016

- **Objectives:**
 - Model the migration toward the Lynghaug prospect.
 - Quantify the amount of hydrocarbon generated in the kitchen areas adjacent to the licence.
- **Results:**
 - Model showed that charge onto the Nordland Ridge via Skaugumsåsen is possible, however, it also showed that it is highly dependent on cross fault leakage.

4. Fault Seal Analysis (Lundin study), 2016

- **Objectives:**
 - Understand potential barriers to migration toward the Lynghaug prospect.
 - Understand the sealing potential of the main bounding fault to the Lynghaug prospect.
- **Results:**
 - Faults were found to be predominantly sealing, however, it is possible that there are small areas of sand-sand juxtaposition with insufficient shale-gouge ratio in both the bounding fault to Skaugumsåsen, and at depth in the main bounding fault to Lynghaug. It was acknowledged however, that there was not high enough resolution in the study to quantify this.

5. Reservoir characterisation and Petrophysical Studies (Capricorn study), 2017

- **Objectives:**
 - Understand the reservoir properties used in the volume calculation for the main prospect and leads.
- **Results:**
 - Full reservoir information from all relevant offset wells: NTG, porosity, saturation.
 - Good reservoir properties expected for the lower to middle Jurassic reservoirs in all the PL 758 prospects.

6. Rock Physics Study (Capricorn study), 2017

- **Objectives:**
 - Produce and scan AVO attributes to identify potential DHIs in Lynghaug and other PL 758 prospects.
 - Model reservoir seismic response in surrounding wells, evaluate the visibility of a potential oil-water contact and the impact of variations in fluid and lithology on seismic response within the lower to middle Jurassic reservoir package.
- **Results:**
 - No AVO attributes in support of an oil column in Lynghaug were identified.
 - Proposed flat-events were most likely seabed and peg-leg multiples that hadn't been properly removed.
 - Wedge modelling of the Åre Fm. stratigraphy and seismic response associated with oil, gas, and brine, showed that it is unlikely that an oil-water contact would be visible in the data if the oil was of similar quality to that found in Skaugumsåsen. A gas-oil or gas-water contact would be clearly visible however, as observed in Skaugumsåsen.

7. Geomechanical and Pore Pressure Study (Capricorn/Schlumberger Study), 2018

- **Objectives:**
 - Obtain an independent geomechanical model and pore pressure prognosis for the Lynghaug prospect ahead of drilling well 6508/1-3.
- **Results:**
 - Pore pressure prognosis was well constrained by offset wells 6508/1-1S, 6508/1-2, and 6608/10-13.
 - A hydrostatic pressure gradient was expected down to the top of the Kai Formation where there was a slight ramp in pressure gradient up to 1.16 sg just above the BCU, before pressures were expected to drop back to hydrostatic in the Åre Formation reservoir. (No pressures were taken in the well, however, there was no evidence during drilling for any deviation from the prognosed pore pressure gradient.)

8. Fault Seal Analysis (Badley Geoscience), 2019

- **Objectives:**
 - Investigate the potential for sealing faults at reservoir levels in PL 758.
 - Understand potential migration pathway in the event of a discovery in well 6508/1-3.
 - Understand the sealing potential of the main bounding fault on the Lynghaug prospect, and the potential for migration further up dip in the case of a discovery in well 6508/1-3.
- **Results:**
 - All faults studied were found to have a high potential for sealing and retaining a significant hydrocarbon column in early to middle Jurassic reservoirs in the PL 758 area.

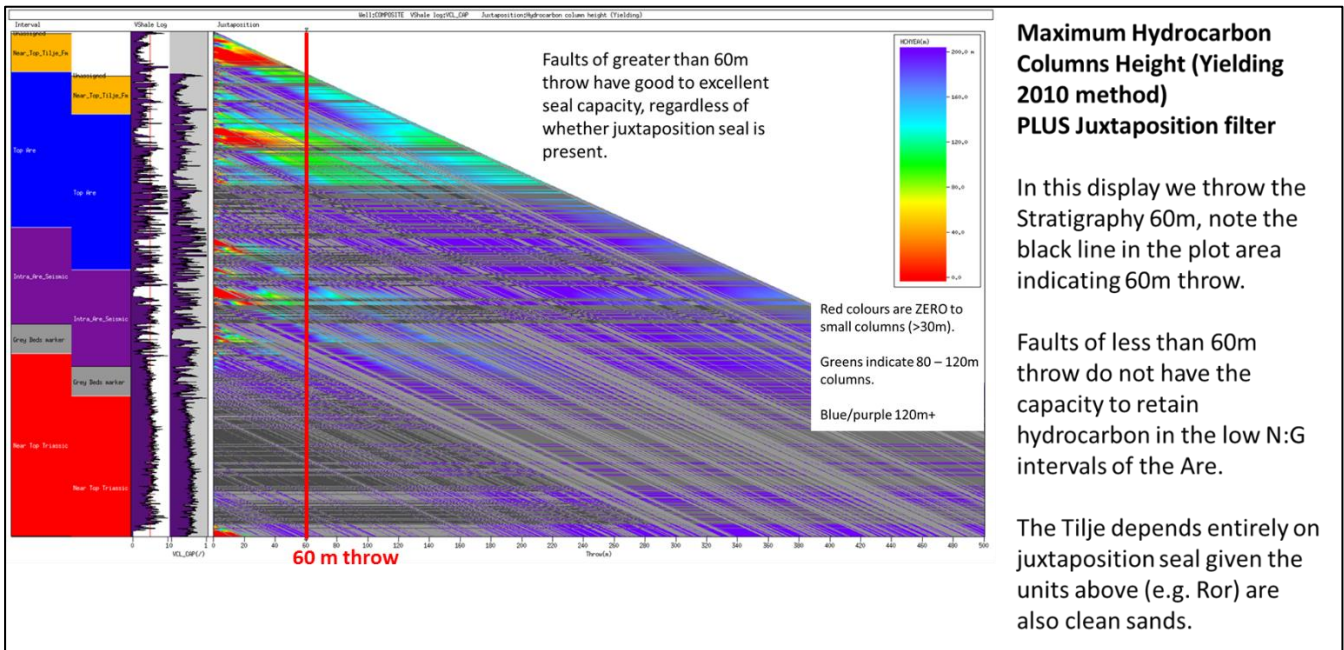


Figure 3.1: Triangle diagram from Badley Geoscience that was produced using a pseudo-well that was constructed from sections of wells 6508/1-2, 6608/10-13, 6608/11-1, and 6608/11-3. Results show that a fault with a throw of more than 60 m at Åre Formation level is expected to seal.

9. VSP and Seismic Multiples (Schlumberger/Capricorn Study), 2019

- **Objectives:**
 - Obtain a high quality seismic to well tie.
 - Obtain Checkshots in the well.
 - Understand the wavelet for input to study of seismic multiples in the area.
- **Results:**
 - Excellent seismic to well tie achieved for well 6508/1-3 using both the LWD data, and the VSP.
 - Identified several strong multiples in the area and confirmed that the flat event originally interpreted as a DHI in the Røsslyng lead at 1500 ms is likely to be a peg-leg multiple.

10. Biostratigraphic Study (RPS Energy), 2019

- **Objectives:**
 - Dating of lithologies and stratigraphy penetrated by well 6508/1-3.
 - Confirmation of seismic horizons interpreted, and formation tops picked on the well logs.
- **Results:**
 - Confirmation that no Cretaceous stratigraphy was encountered in the well.
 - The Tang Formation well top may be deeper than interpreted on seismic. However, this is unclear as there are caved samples at Tang Formation to BCU level in the well cuttings.
 - After some discussion, the BCU well top remained as picked on the logs, as there is evidence that Tang Formation samples picked deeper than this are caved.

4. Prospect update report

The main prospect identified in the 2013 APA Licencing Round was named Lynghaug. It was defined on the licence round application as a combination of the Klokkelyng and Røsslyng prospects. The Klokkelyng segment is a fault bound, hangingwall trap closure at Lower Jurassic/Upper Triassic Båt Group level, with fault seal against Lower Jurassic and Upper Triassic strata required in the main bounding fault to the east. The Røsslyng segment lies at the lower Åre Formation level and requires a top seal provided by intra-Åre Formation coals and mudstones to prevent leakage into the segment tested by dry well 6608/10-13. The reservoirs were deposited in coastal plain fluvial environments.

The source rock is expected to comprise of Late Jurassic organic-rich shales of the Spekk Formation (analogue to the Skaugumsåsen discovery). The top seal is provided by Paleocene mudstones of the Tang Formation.

The key prospect risk was identified as the ability to migrate hydrocarbons through the bounding fault of Skaugumsåsen (discovery well 6508/1-2) and into the Lynghaug prospect. The overall Chance of Success was 19 %, with Reservoir (90 %), Trap (45 %), Charge (60 %), and Retention (80 %). At the start of the licence, combined Klokkelyng and Røsslyng recoverable volumes had the following range: 21 - 41 - 62 million Sm³ (P90 - Mean - P10).

Figure 4.1 below shows the Lynghaug prospect at the application stage, which was considered at the time to be comprised of the Klokkelyng and Røsslyng segments by the operator in the licence.

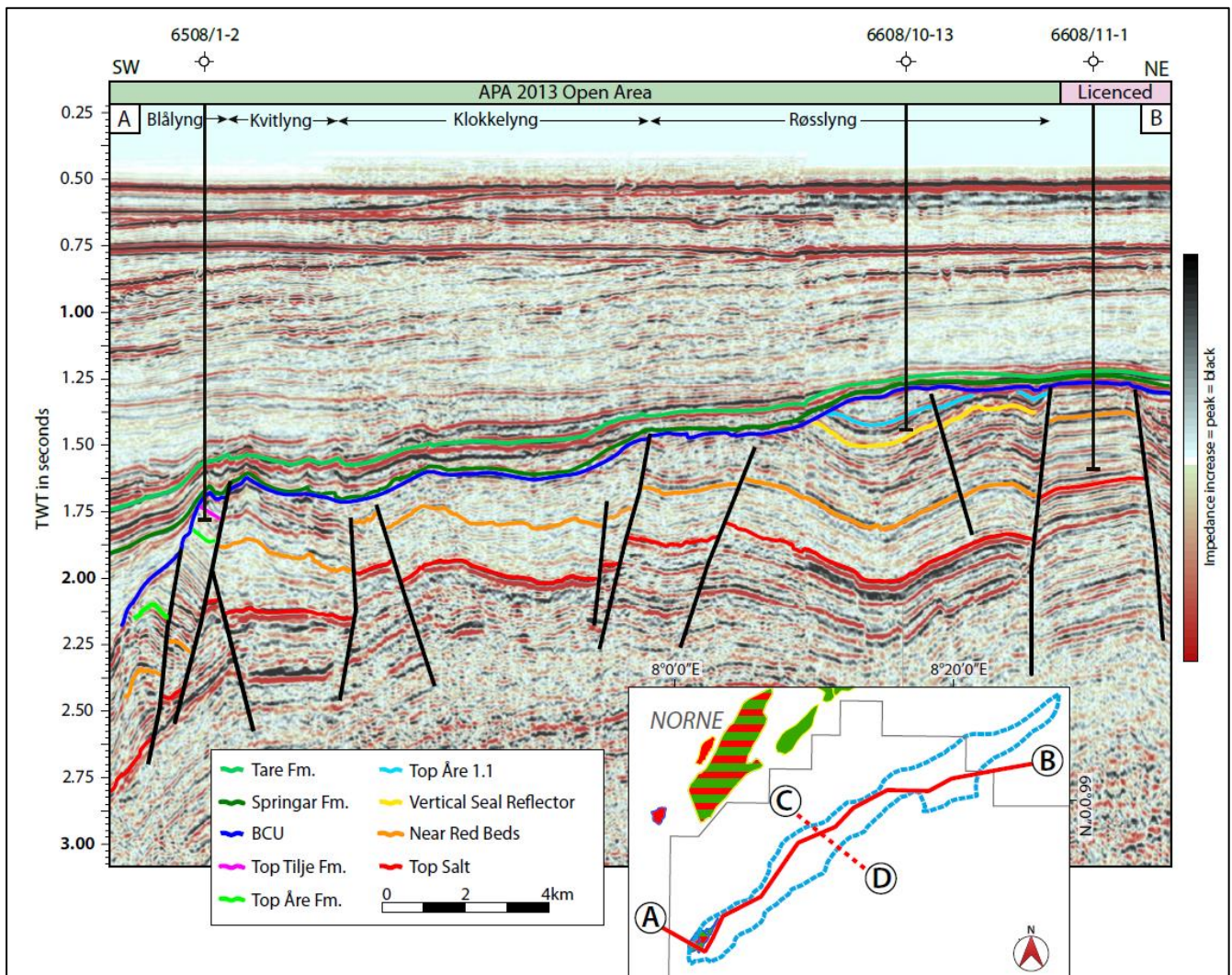


Figure 4.1: Lynghaug prospect, comprised of Klokkelyng and Røsslyng segments) assessment at the start of the licence.

The 3D seismic does not show any DHIs relating to the presence of gas (e.g. amplitude/AVO anomaly with conformance to structure or flat spot), which may be expected in such good reservoir (6508/1-2 Skaugumsåsen analogue).

The basin modelling, calibrated to well 6508/1-2 (Skaugumsåsen accumulation), indicated that the Lynghaug prospect could be charge constrained by a tortuous migration path that crosses several potentially sealing faults.

The CPI studies of offset wells for the Åre reservoir confirmed the reservoir parameters used in the Lynghaug assessment and summarized in the table below.

Reservoir parameters	P90	Most Likely	P10
Crest of the prospect (m TVDSS)	1410	1430	1450
GRV (10 ⁹ Sm ³)	0.30	0.50	0.87
Oil Water contact (OWC) (m TVDSS)	1569	1624	1691
Net to Gross	0.30	0.40	0.50
Porosity	0.24	0.27	0.30
Oil saturation	0.65	0.72 <td>0.80</td>	0.80
1/Bo	0.88	0.90	0.92
Oil Recovery factor	0.26	0.35	0.43

Table 4.1: Volumetric parameters for the Lynghaug Prospect

The Final assessment of the Lynghaug prospect did not include the Røsslyng segment (Operator Capricorn Norge renamed ‘Klokkelyng’ to ‘Lynghaug’) and shows a P90 to P10 range of recoverable oil volumes of 2.8 to 22.5 million Sm³ with a Mean recoverable volume of 10.2 million Sm³. The final pre-drill geological probability of success was reduced to 17 %.

Figure 4.2 shows the prospect summary sheet for the final prospect assessment.

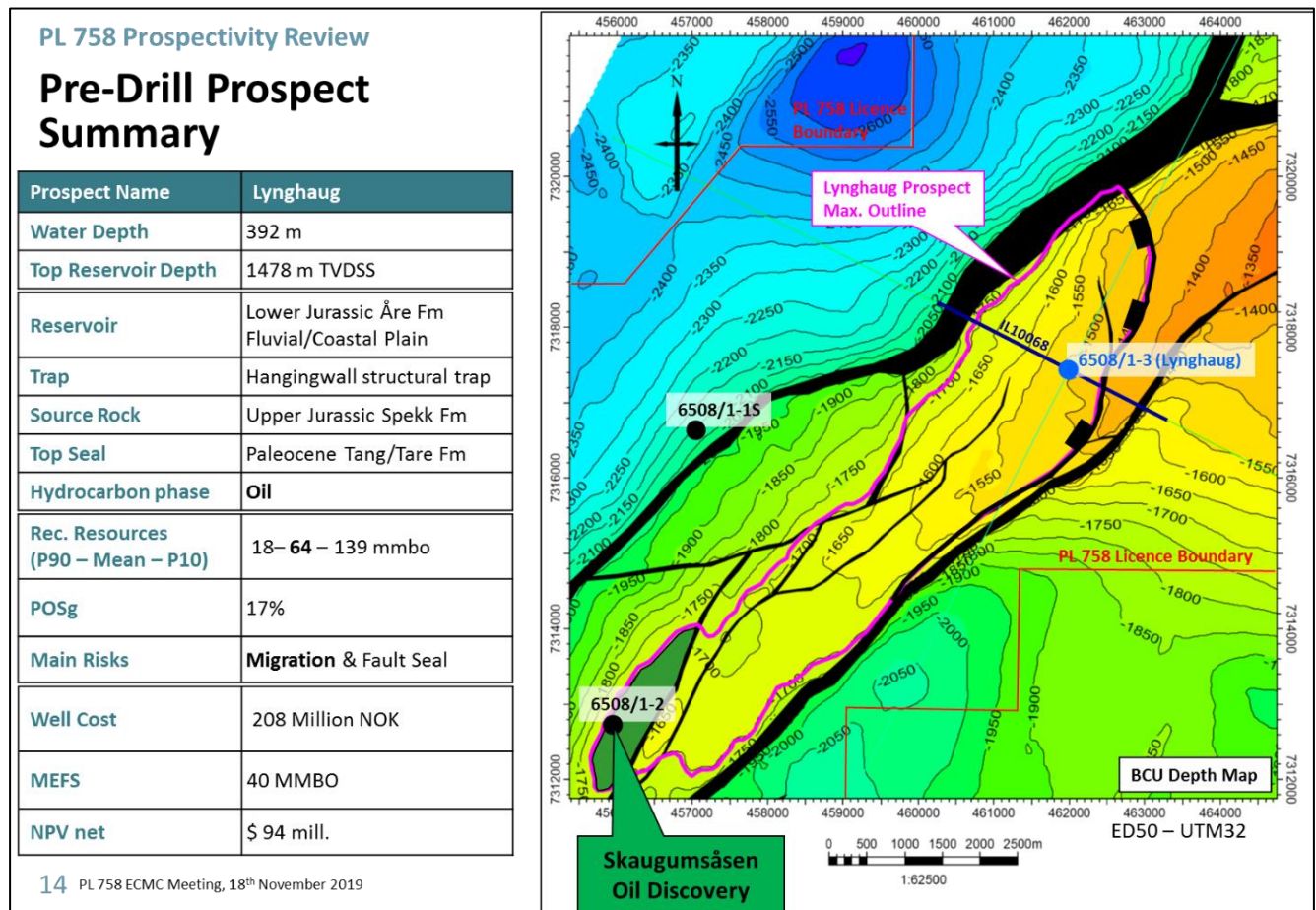


Figure 4.2: Lynghaug prospect assessment at the drill or drop stage.

5. Lynghaug Well Results

Well 6508/1-3 was spudded on June 20th, 2019 and reached a Total Depth (TD) of 1687 m TVD RT in Early Jurassic Åre Formation sandstones. The well was dry with no shows. The reservoir was of excellent quality as prognosed and formation tops were within the uncertainty of +/- 20 m. Advanced Gas Analysis and Isotope studies were conducted in real time through the 8 1/2" section and only very low quantities of methane were recorded in the well. Isotope analysis showed this methane to be of biogenic origin.

The reason for failure of the Lynghaug prospect is migration as suggested by the well results, and supported by the Fault Seal Analysis study conducted by Badley Geoscience Ltd. This was identified as the key geological risk ahead of drilling the well.

A more detailed assessment of the Lynghaug well operations, data acquisition, and results can be found in the 6508/1-3 End of Well Report.

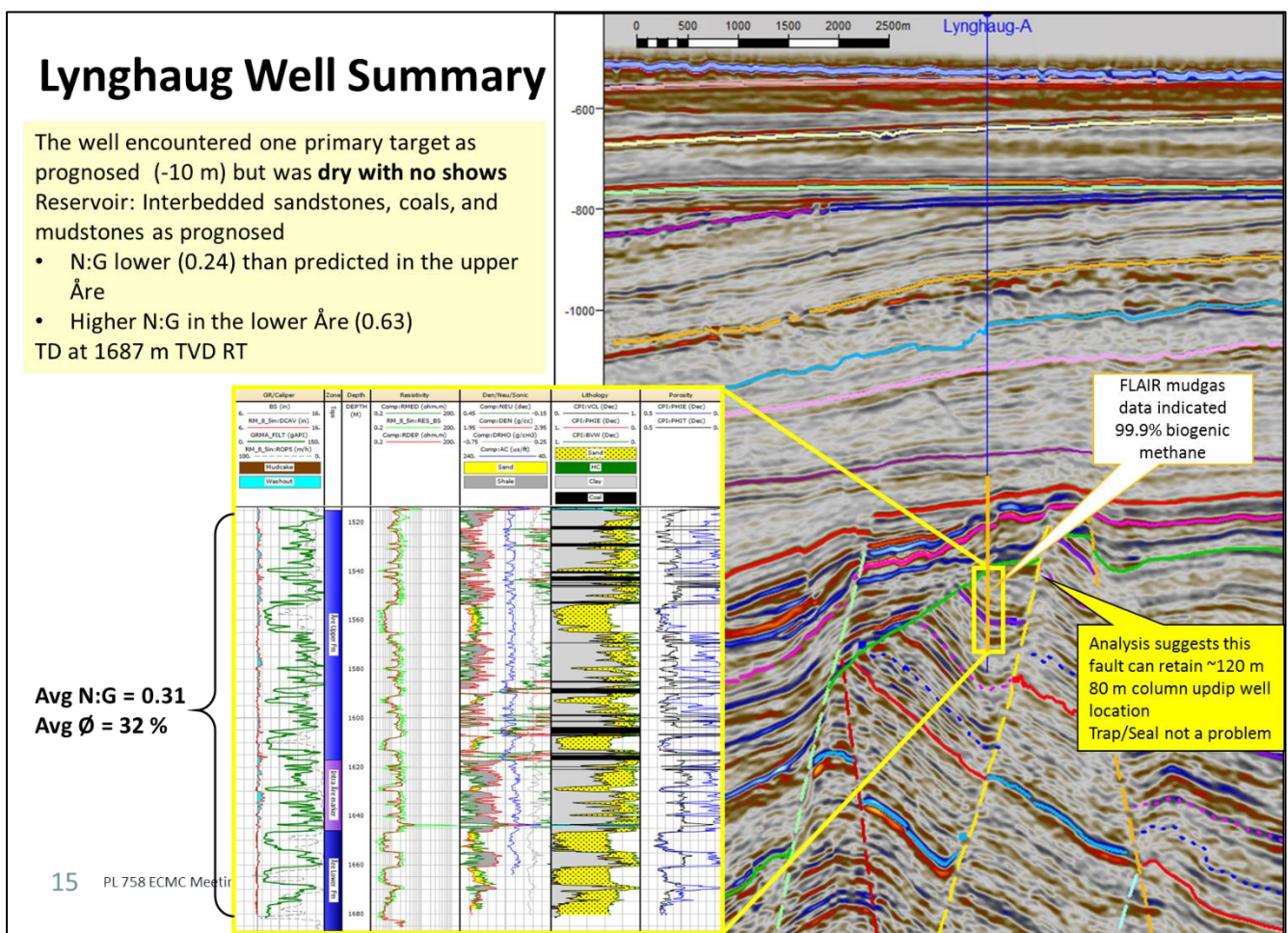


Figure 5.1: Summary of the well 6508/1-3 (Lynghaug). Seismic line is IL10068 (MC3D-HVG2012M), located on the map in Figure 4.2.

6. Remaining Prospectivity

In addition to the main prospect, all stratigraphic intervals were studied, and several additional leads and prospects were identified in PL 758. A summary map showing all prospects and leads in the licence can be found in Section 8: Conclusion.

Skaugumsåsen Discovery

In 2011 Det Norske drilled well 6508/1-2 on the Skaugumsåsen prospect in the south west of what is now the PL 758 licence area. The well encountered an 18.2 m gas column and a 22.3 m oil column in the Ror and Ile formations. Subsequent evaluation found the discovery to be sub-commercial.

Capricorn Norge have conducted an independent mapping and volumetric assessment of the Skaugumsåsen discovery. Volumes range from 0.38 million Sm³ (P90) – 0.44 million Sm³ (PMean) – 0.50 million Sm³ (P10) and are considered sub-economic by Capricorn Norge. The trap is underfilled, and fault seal analysis suggests that the bounding fault has a high sealing capacity, which in turn suggests that there is restricted charge to the prospect.

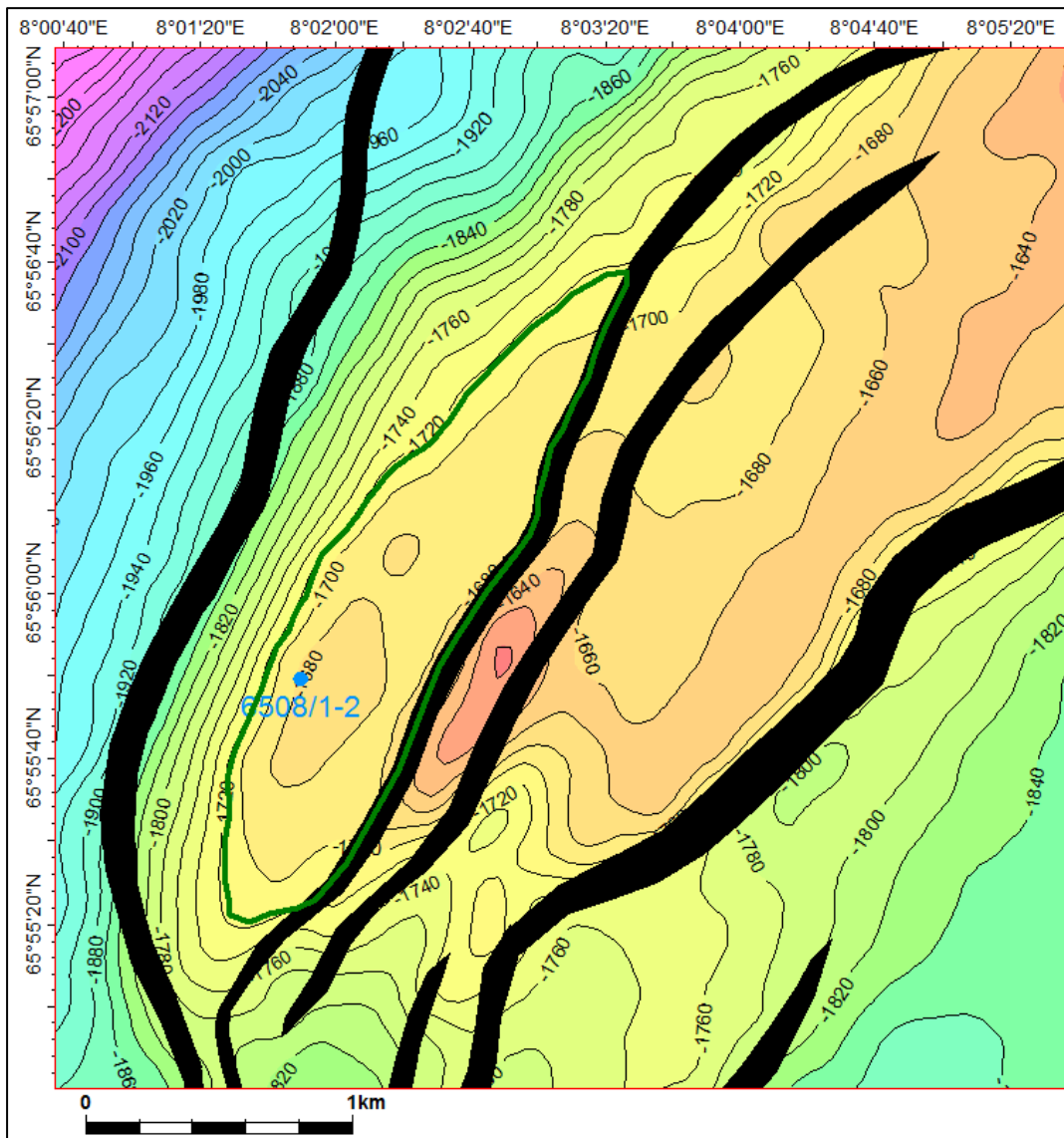


Figure 6.1: BCU Depth Map with the Oil Water Contact (OWC) at 1716 m for Skaugumsåsen highlighted by the green polygon. Contour Interval (c.i.) is 20 m.

Tinghaug Prospect

The Tinghaug prospect is a fault bound horst at the most crestal part of PL 758 beneath the BCU, which dips towards the southwest. The northeast corner of the prospect relies on fault seal to prevent leakage into the segment penetrated by well 6608/11-1. The reservoir is comprised of Åre Fm. sandstones, as encountered in the Lynghaug prospect. Tang Formation mudstones form the top seal. The prospect was modelled to receive charge from the southwest via Skaugumsåsen and Lynghaug through leak points in the bounding faults at depth, or through the narrow horst to the immediate east of the Lynghaug prospect.

The Tinghaug prospect was highly dependent upon a discovery in Lynghaug, as charge was the key risk. Following the Lynghaug well, the chance of charge to Tinghaug was dropped to 10 %, which in turn reduced the overall geological chance of success (Pg) of the prospect to just 6 %. In addition, there is a considerable risk of biodegradation as the Tinghaug prospect is approximately 480 m shallower than the Skaugumsåsen discovery.

Figure 6.2 and Figure 6.3 show a depth map and an arbitrary seismic section through the Tinghaug prospect.

Volumetric calculation using reservoir parameters constrained by data from the Lynghaug well yield a P90 – P10 range for recoverable oil of 0.94 – 11.30 million Sm³, with a Mean case of 5.56 million Sm³.

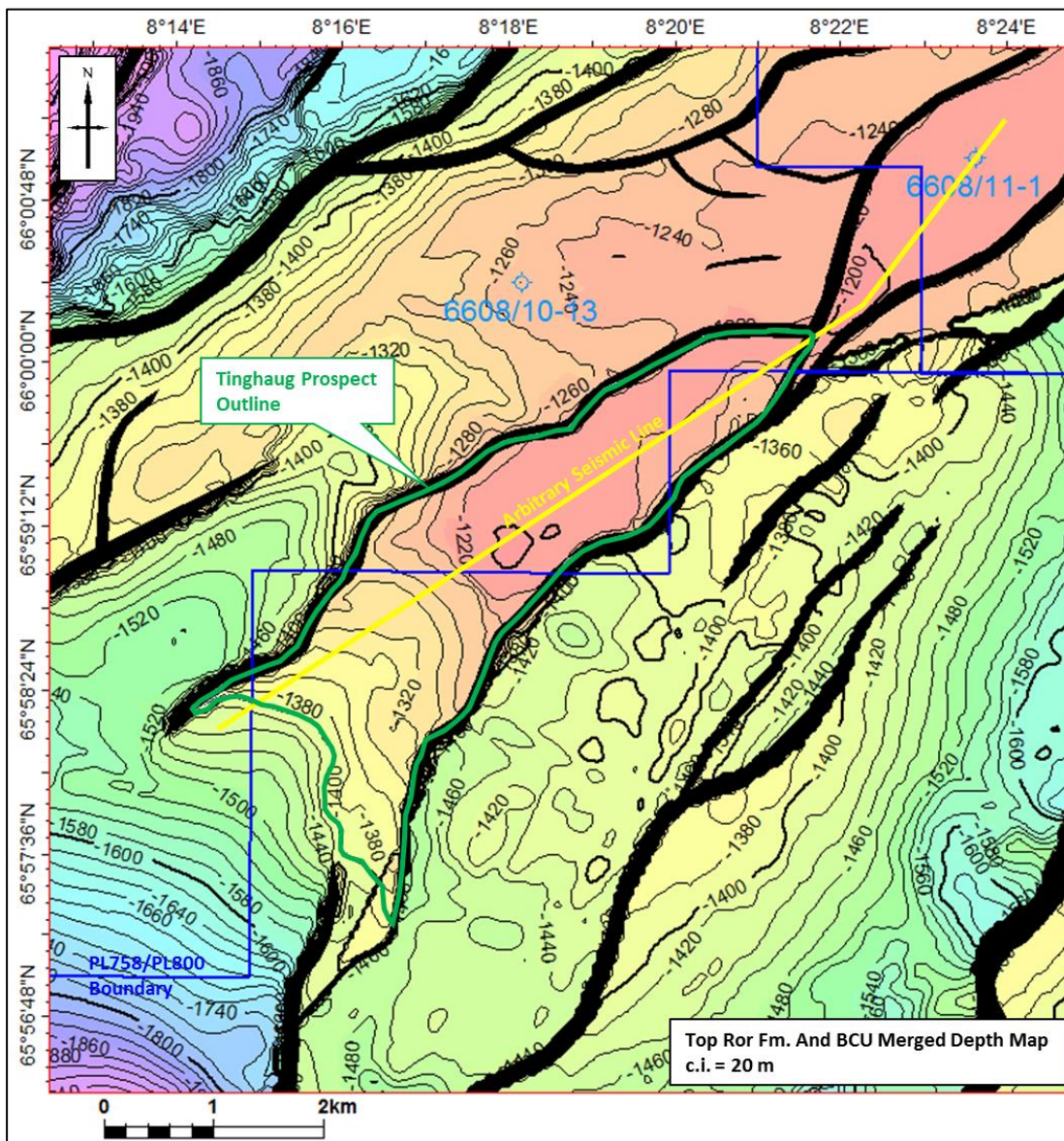


Figure 6.2: BCU Depth Map showing the outline of the Tinghaug Prospect. The southwest limit of the prospect lies in PL 800 and is defined by a Ror Formation top seal which is eroded out updip by the BCU (where Tang Fm. becomes the top seal). Contour Interval is 20 m.

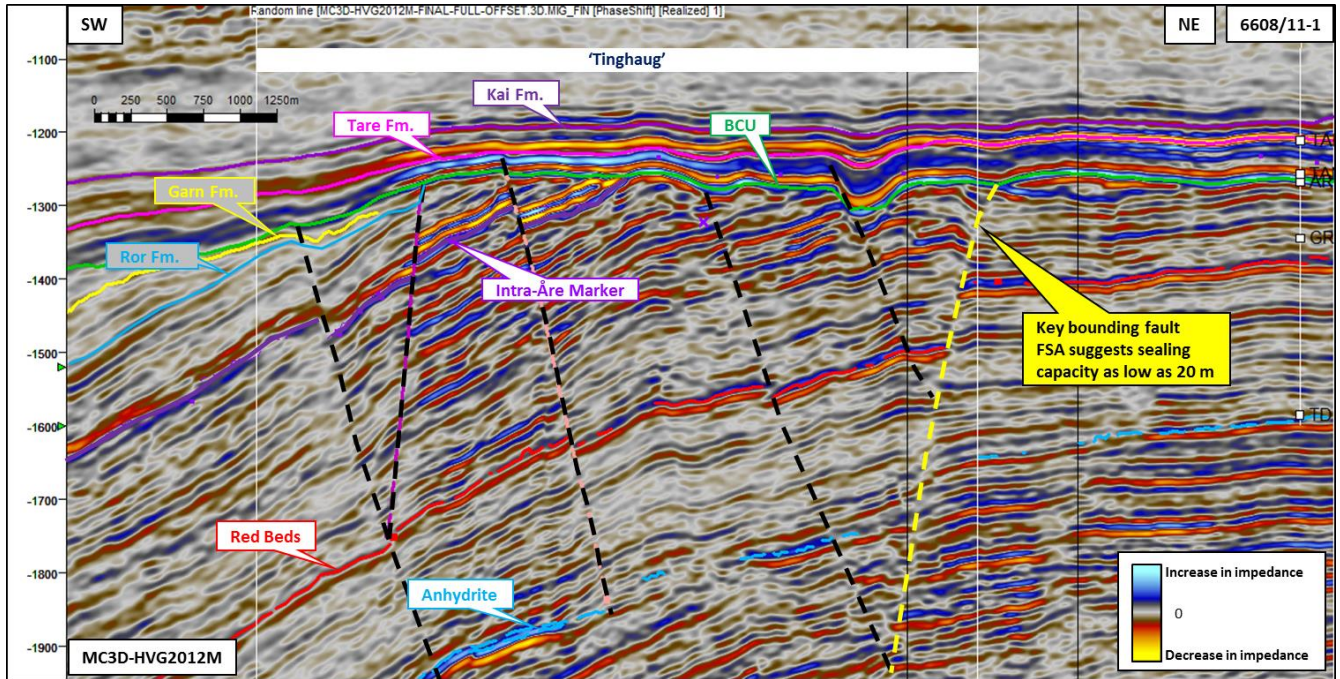


Figure 6.3: Arbitrary seismic line through the Tinghaug prospect. Line location is shown in Figure 6.2.

Tasta Prospect

The Tasta prospect is a structural-stratigraphic trap comprised of Ile Formation and Garn Formation reservoir quality sands onlapping the Nordland Ridge. Well 6507/3-6, approximately 20 km to the southwest, drilled a similar succession and encountered a total of 21.5 m of very good quality net reservoir sandstone in the Ile and Garn formations. However, the well was dry, highlighting the high risk on charge in the area. The trap is defined by lateral hangingwall fault seal and an onlap related shale-out/pinch-out, or possibly a truncation below the BCU, to the south of well 6608/10-13. This is difficult to determine from seismic, but the reservoir units are interpreted to most likely shale-out down-dip of the BCU truncation of the Upper Jurassic. The trap also relies on a competent base seal provided by Ror Formation shales to prevent leakage into the Åre Formation trap tested by dry well 6608/10-13.

It was proposed that charge to the prospect could leak through the fault to the west that bounds both the Lynghaug and Tasta prospects. Fault Seal Analysis suggests that the fault has a very high sealing potential due to the large displacement and high Shale-Gouge Ratio (SGR) in the fault plane.

Due to the relatively complicated and unlikely migration pathway, the key risk in the prospect was charge. After the results of dry well 6508/1-3 (Lynghaug) the chance of success (Pg) on charge has been further reduced to 10 %. This has the effect of reducing the overall Pg of the Tasta prospect to 6 %.

Volumetric calculation using reservoir parameters constrained by data from well 6507/3-6 yield a P90 – P10 range of recoverable resources of 5.64 – 20.3 million Sm³, with a Mean case recoverable volume of 12.4 million Sm³ recoverable oil.

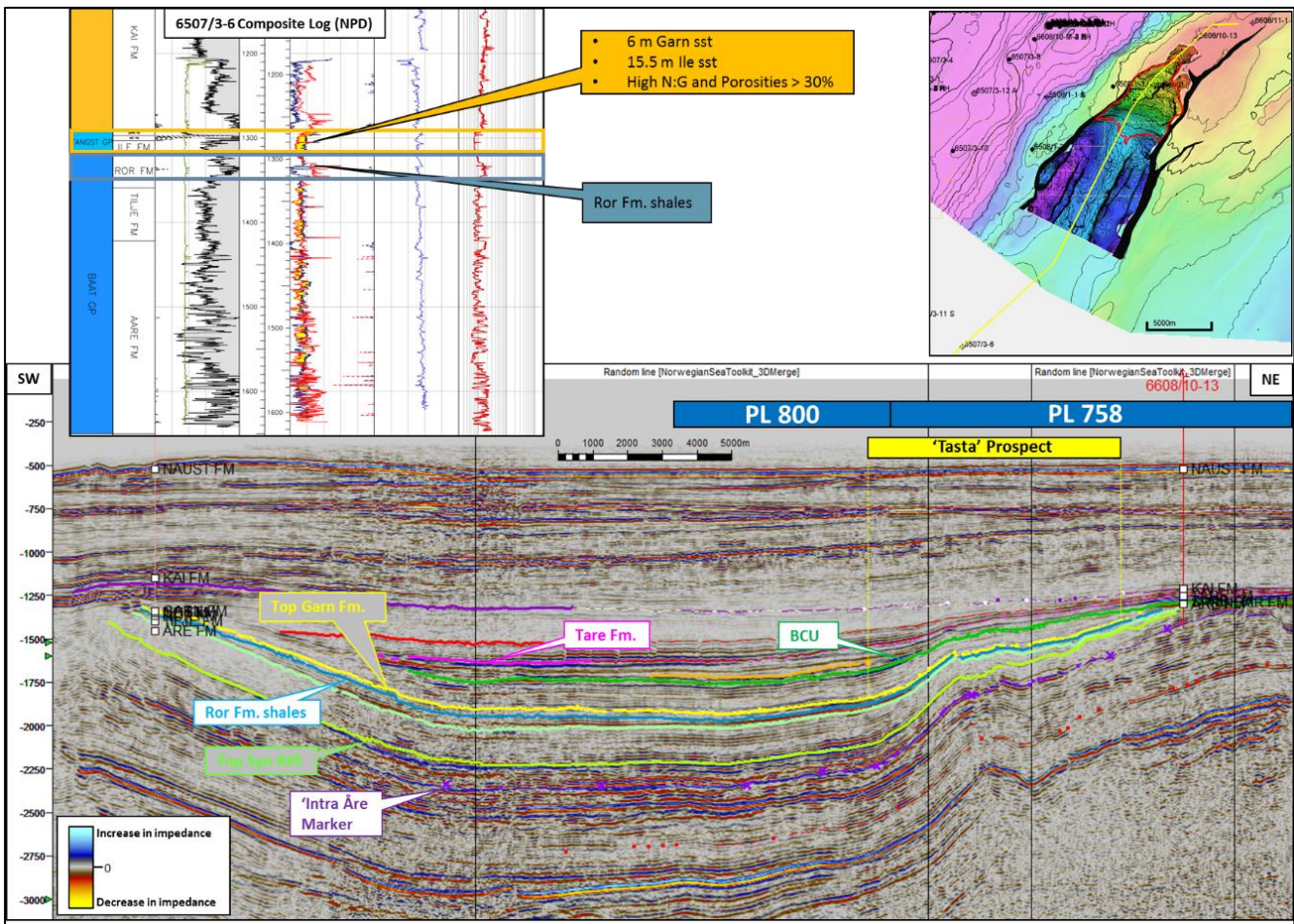


Figure 6.4: Tie line from well 6507/3-6 to the Tasta Prospect. Well 6507/3-6 encountered good quality reservoir sandstones in the Fangst Group.

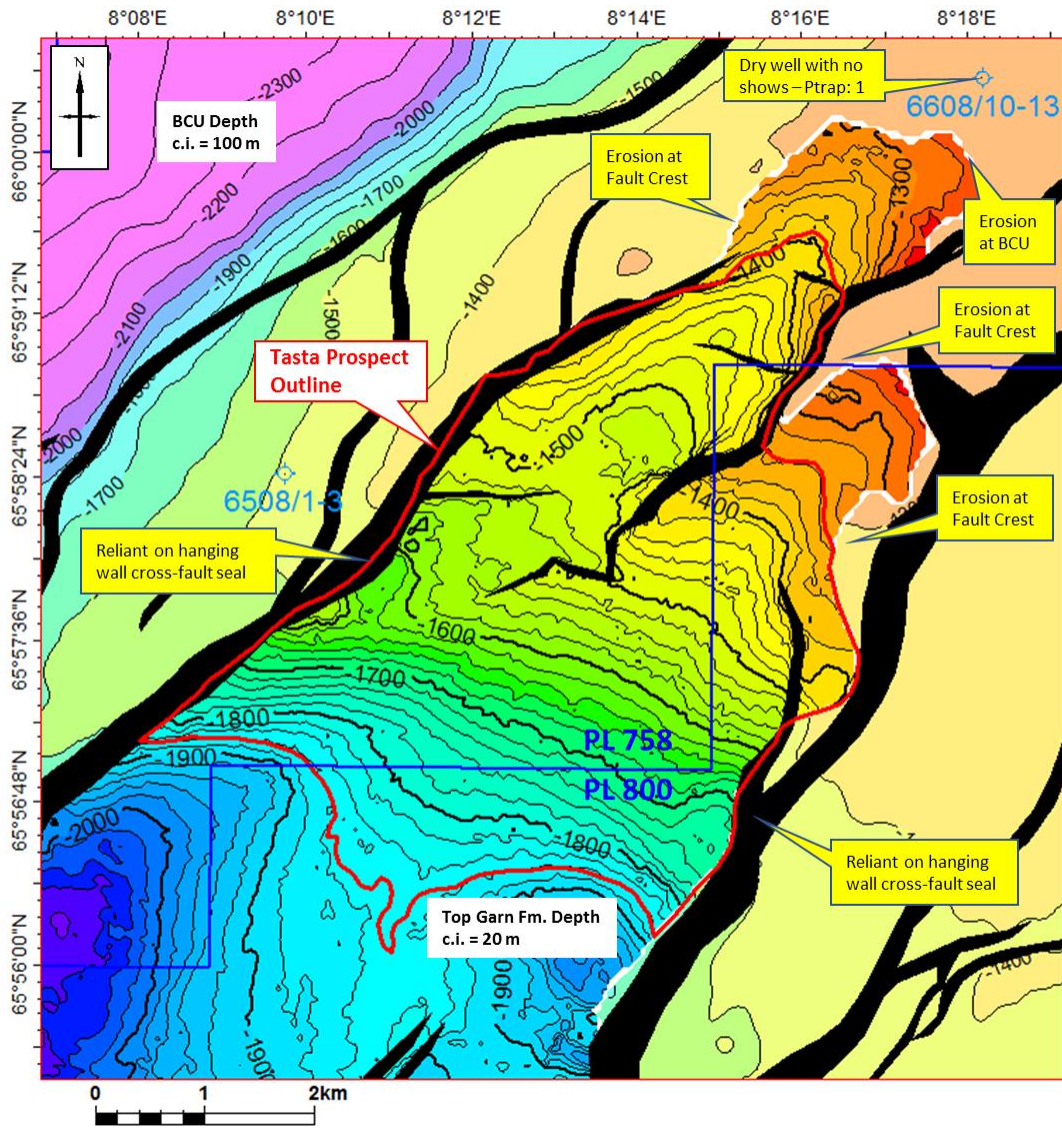


Figure 6.5: Top Garn Fm. Depth map with a contour interval (c.i.) of 20 m, within a cut-out of the BCU Depth map (c.i. = 100 m)

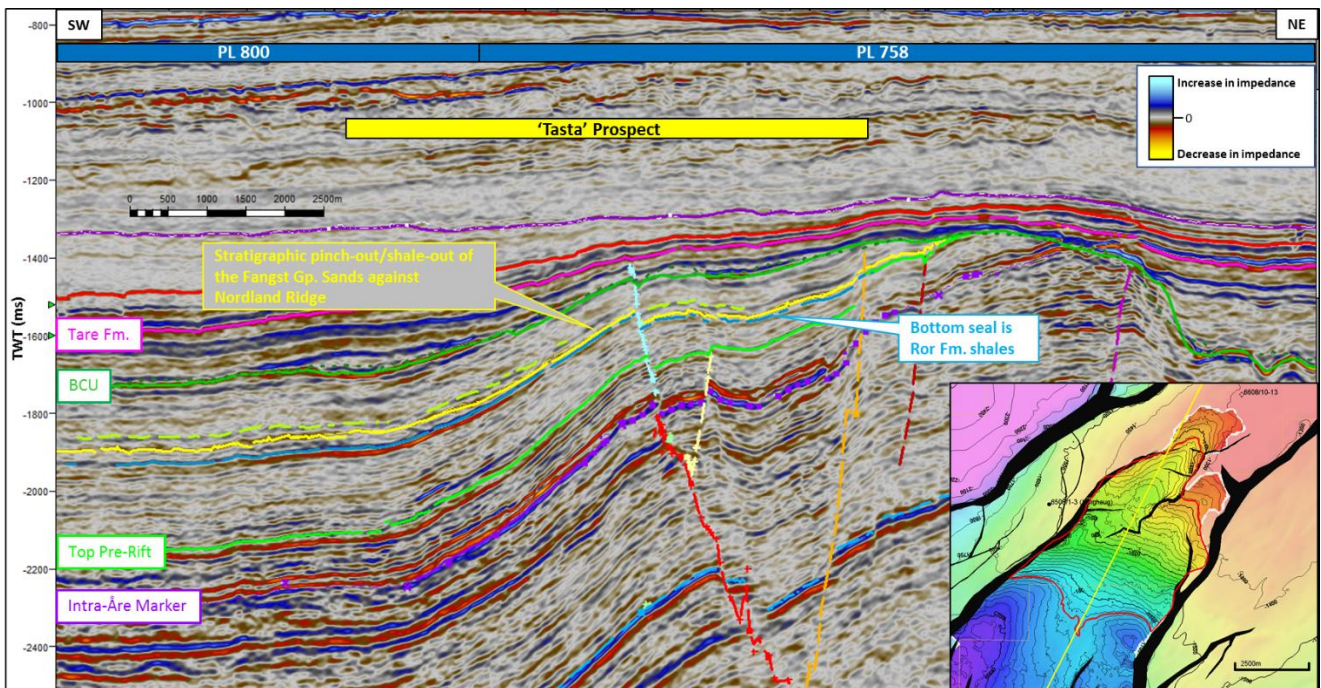


Figure 6.6: Seismic line through the Tasta prospect highlighting the key prospect elements.

Lervig Lead

The Lervig lead directly overlies the down dip part of the Tasta prospect. The lead lies predominantly in PL 800, however, as the crest lies in PL 758, it is described in the Relinquishment Report for both licences. The reservoir model comprises of shallow marine Rogn Formation sandstone reworked from uplifted Lower to Middle Jurassic sediments to the north. The potential reservoir sands are contained within Spekk Formation shales and are identified as a bright negative impedance reflector on the 3D seismic data. On the HVG2012M 3D seismic dataset, this reflector has a Class IV AVO response in line with that expected for an organic rich shale. However, on the CAP17M01 reprocessed dataset a Class II/III AVO response is observed. This is similar to the response observed on the Godalen prospect in PL 842, where no reservoir was encountered (only Spekk Formation shales). The CAP17M01 processing sequence was extended further to the south on the RS1002 data in order to capture more of the Lervig lead. A simple near vs far amplitude map panel is presented in Figure 6.7 below where brightening of the soft amplitude is observed on the far offset data.

This lead was a potential follow up to a discovery in the Godalen Prospect, drilled in PL 842 to the north. Calibration to the Godalen well shows that the seismic response in Lervig is highly likely to be a Class IV shale response as observed on the MC3D-HVG2012M dataset. The primary reason for the Class II/III AVO effect observed on the CAP17M01 and CAP19M01 datasets is a problem with the offset amplitude balancing of the data. When compared to the AVO response modelled from offset wells 6608/10-13 and 6608/11-1, the HVG2012M data has the most consistent response.

The dry well in Lynghaug increased the risk on charge to the Lervig lead as it was dependent upon leakage from a column retained in Lynghaug through the main bounding fault into the Lervig lead. The absence of reservoir in well 6608/11-9 (Godalen), together with seismic calibration using the data from that well has increased the risk on reservoir presence in the Lervig lead. This lowers the overall chance of success to 4 %. Volumetric calculation for the Lervig lead yields a P90 – P10 range of recoverable resources of 2.4 – 10.5 million Sm³, with a Mean case volume of 6.0 million Sm³ recoverable oil.

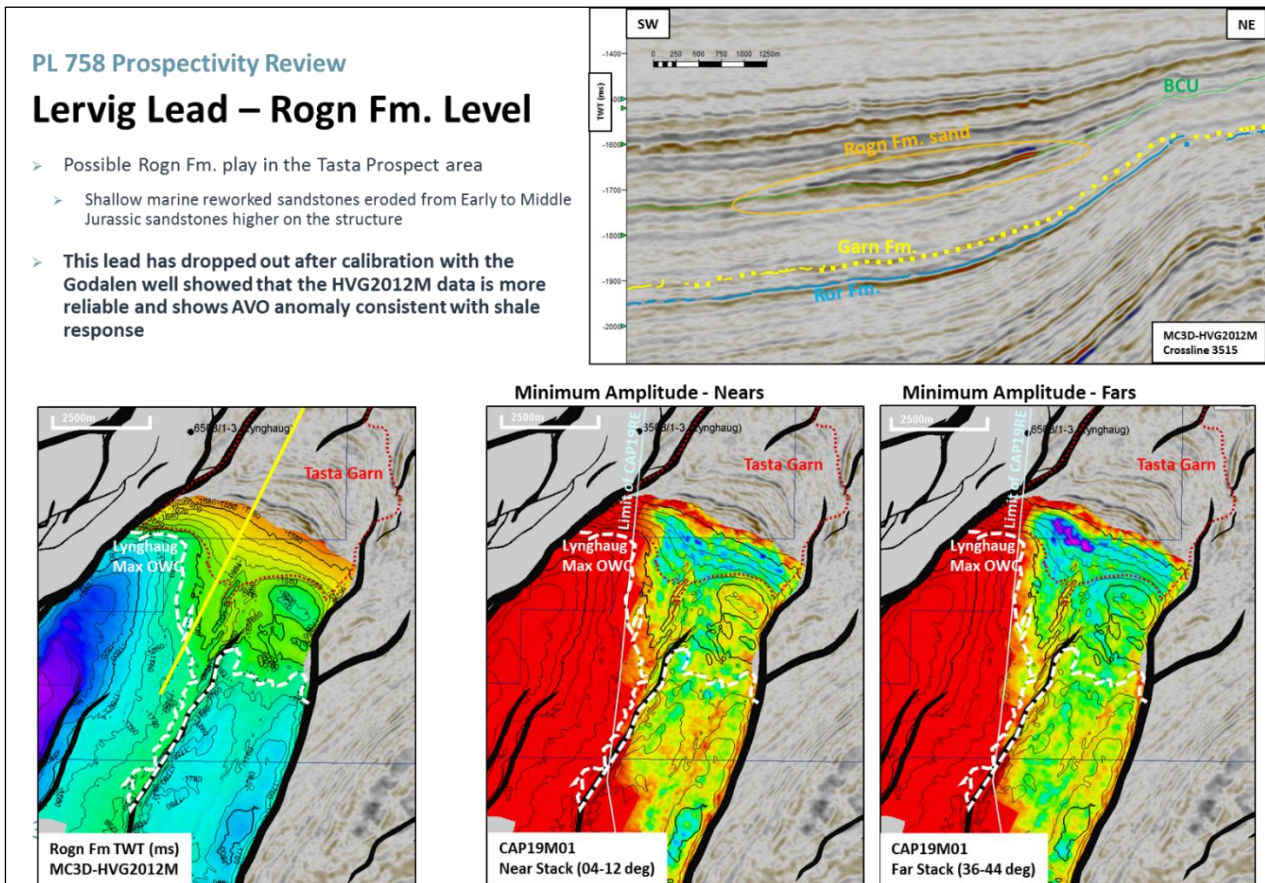


Figure 6.7: Composite panel illustrating the Lervig Lead. Seismic line shows Full Offset data from MC3D-HVG2012M.

Erdinger Lead

The Erdinger lead model comprises deep marine Rogn Formation sandstone trapped in the graben between the Norne Field and the Revfallet Fault Complex. The trap is expected to be a stratigraphic pinch out with some possible connectivity to the Norne Field. Charge may be possible through reservoir juxtaposition against the Norne Field where Rogn Formation sandstones may be juxtaposed against the Båt Group reservoir in the Norne Field. The key risk to the Erdinger lead is on reservoir presence and quality. A Callovian, Melke Formation, sandstone penetrated by well 6608/10-8 had significant calcite cementation. There is no AVO anomaly to indicate the presence of hydrocarbons and AVO analysis of the top and base of the potential Rogn Formation reservoir indicates a Class IV response in line with that expected from a source rock.

The Erdinger lead has been calculated to have a Mean recoverable resource potential of 2.27 million Sm³, with a P90 – P10 range of 0.66 million Sm³ – 4.21 million Sm³. The chance of success for the Erdinger lead is 11 %.

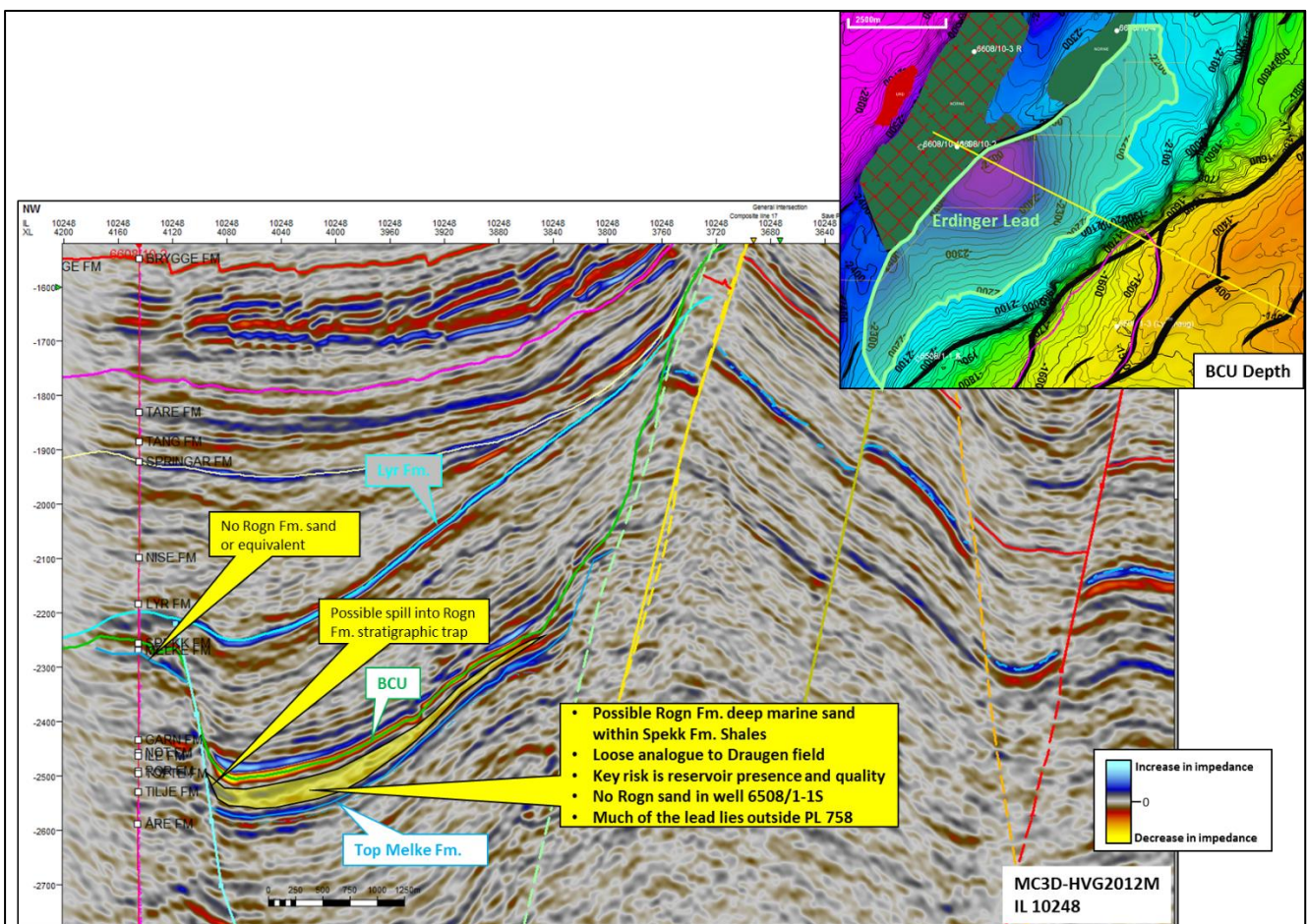


Figure 6.8: Seismic inline through the Erdinger Lead

Røsslyng Lead

The Røsslyng lead was originally the primary prospect in the licence comprising of lower Åre Formation reservoir with a top seal provided by the low net to gross coally interval that sits immediately above the Intra-Åre marker horizon. There was some debate amongst the partners in the licence as to whether this low net:gross could provide a competent top seal to the lead. Capricorn Norge interpret this interval to have poor sealing capacity due to the heterogenous nature of the Åre Formation sediments deposited in a fluvial to coastal plain environment. In addition, biostratigraphic analysis of well 6608/10-13 by Ichron Ltd. (“North Halten Terrace & Helgeland Basin Stratigraphic Database”, 2015) suggests that the well did penetrate the lower Åre Formation, thereby testing the Røsslyng lead. As a result of this, the prospect has to be defined above the level tested by well 608/10-13, therefore restricting the volume potential of the lead.

The lead also relies on the charge from the Lynghaug prospect, which has been proven to be dry above, and below, the Intra-Åre marker horizon. In addition, the main bounding fault of the Lynghaug prospect is interpreted to be sealing based on the Fault Seal Analysis study conducted by Badley Geoscience, in any case preventing migration from the Lynghaug prospect into the Røsslyng lead.

The Røsslyng lead has been calculated to have a Mean recoverable resource potential of 1.9 million Sm³, with a P90 – P10 range of 0.24 million Sm³ – 4.13 million Sm³. The chance of success for the Røsslyng lead is 4 %.

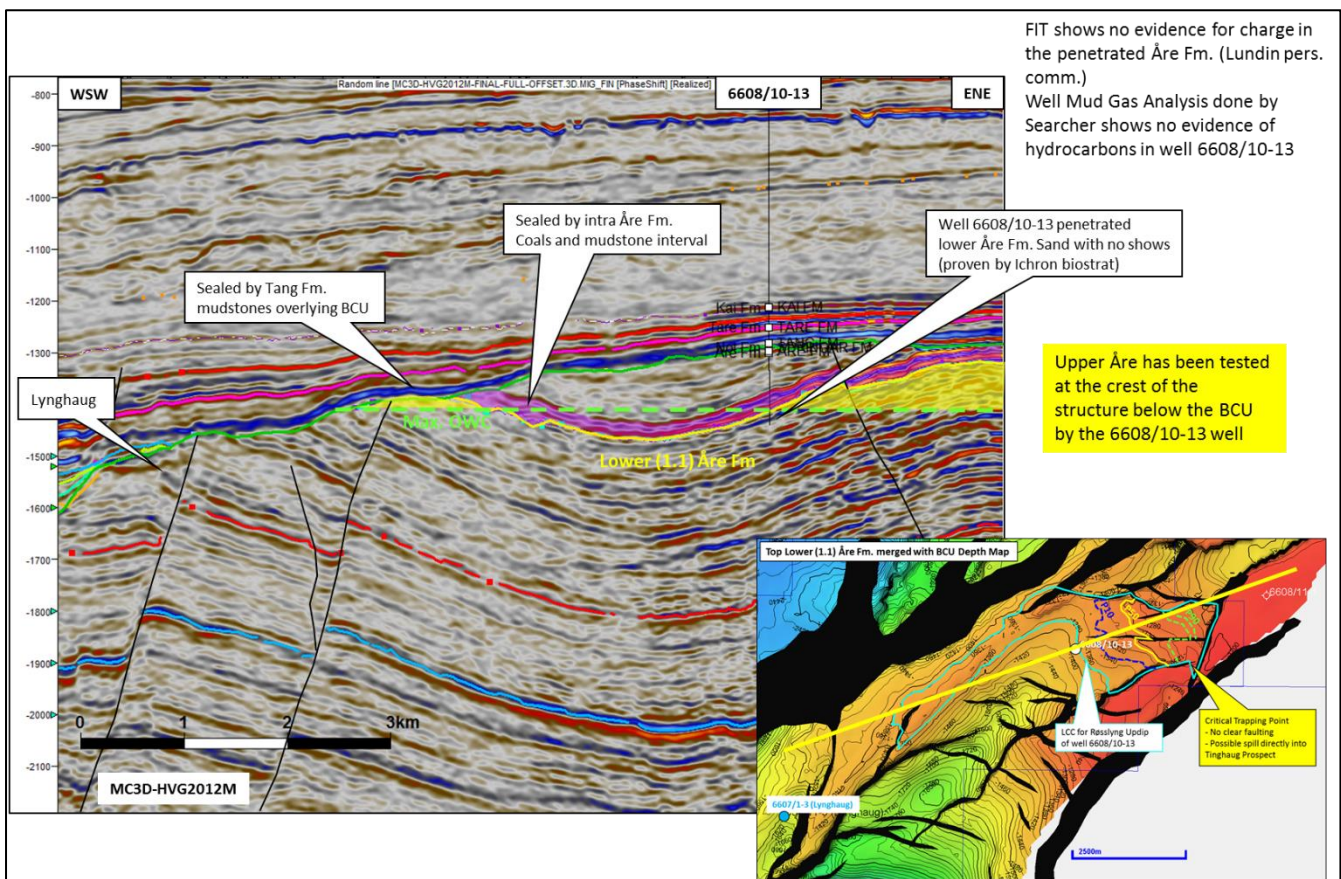


Figure 6.9: Arbitrary seismic line illustrating the Røsslyng sub-Intra-Åre marker lead

7. Technical evaluation

The minimum economical field size for a tie-back development to the Norne facilities for a PL 758 discovery is estimated to 6.36 million Sm³. The lead with the highest chance of success (11 %), Erdinger, has a Mean recoverable volume of only 2.3 million Sm³. The remaining prospects and leads have a geological chance of success of between 4 % and 6 %. Therefore, the PL 758 prospect and leads fall short of the economic threshold, and no further development concept studies were therefore carried out.

8. Conclusion

The dry well result in well 6508/1-3 (Lynghaug), together with the geological and geophysical work performed in the licence demonstrates that the prospects and leads in the PL 758 are charge constrained.

The PL 758 JV partners have decided to relinquish the licence based mainly on the non-economical volumes assessed for the remaining prospectivity in the licence, and the very high risk associated with the prospects.

Figure 8.1 below shows a BCU depth structure map with all prospects and the leads identified in PL 758.

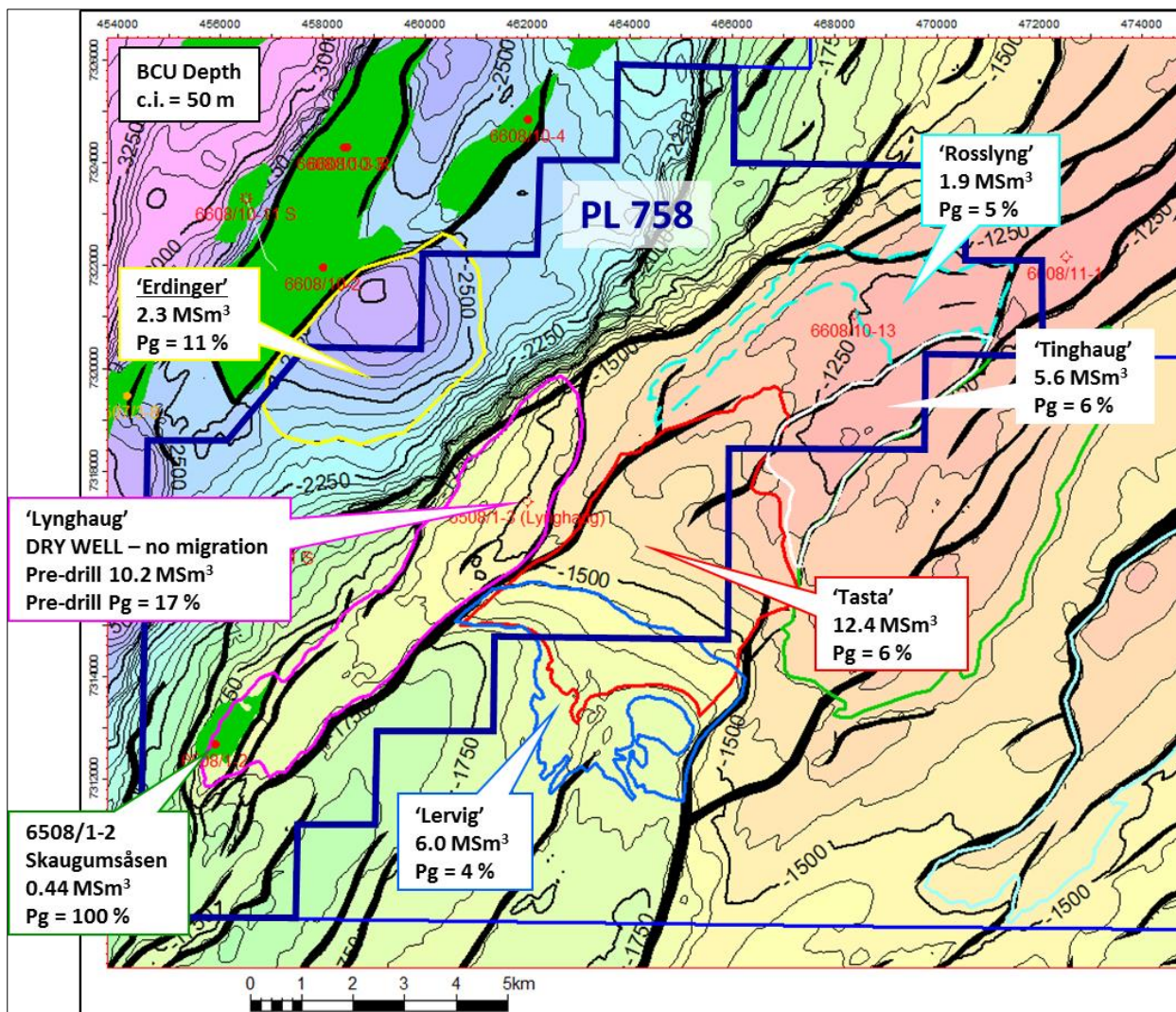


Figure 8.1: Prospect and lead summary map for the PL 758 licence. Mean recoverable oil volumes in million Sm³ are presented on the map.



APPENDIX A: Prospect and Lead Data Sheets

Table A1: Skaugumsåsen Discovery Data Sheet

Block 6508-1	Prospect name	Skaugumsåsen	Discovery/Prospect/Lead	Discovery	Prospect ID (or New)	NPD will insert value	NPD approved (Y/N)
Oil, Gas or O&G case:	Play name (NPD will insert value)	New Play (Y/N)	Outside play (Y/N)	PL 758 Relinquishment Report, 6508/1-2 Discovery	Evaluation Report	Assessment year	2019
This is case no.:	Oil	Reported by company	Reference document	Structural	Water depth [m MSLL] (>0)	Sismic database (2D/3D)	3D
1 of 1	1 of 1	Capricorn Norge	NORDLAND RIDGE	Types of trap			
Resources IN PLACE and RECOVERABLE	Main phase	Base Mode	Base Mean	High (P10)	Low (P90)	Base Mode	Base Mean
Volumes, this case	Low (P90)	High (P10)	High (P10)	Low (P90)	Base Mode	Base Mean	High (P10)
In place resources	Oil [10 ⁶ Sm ³] (>0.00)	1.59	1.76	1.96	1.07	0.08	0.09
	Gas [10 ⁶ Sm ³] (>0.00)	0.55	0.64	0.74	0.07	0.08	0.09
	Oil [10 ⁶ Sm ³] (>0.00)	0.38	0.44	0.50	0.02	0.02	0.02
	Gas [10 ⁶ Sm ³] (>0.00)	0.38	0.44	0.53	0.02	0.02	0.02
Recoverable resources	Plensbachian	Reservoir litho (from)	Title Fm.	Source Rock, chrono primary	Kimmeridgian	Source Rock, litho primary	Spekk Fm.
	Reservoir Chrono (to)	Reservoir litho (to)	Ror Fm.	Source Rock, chrono secondary		Source Rock, litho secondary	Seal, Litho
Reservoir Chrono (to)	Toarcian						Maastrihtian
							Spinnag Fm.
Probability (fraction)	Oil case (0.00-1.00)	1.00	1.00	1.00	0.00	Oil & Gas case (0.00-1.00)	0.00
Total (oil + gas + oil & gas case) (0.00-1.00)	Trap (P2) (0.00-1.00)	1.00	1.00	1.00	Retention (P4) (0.00-1.00)	1.00	1.00
Reservoir (P1) (0.00-1.00)	1.00	1.00	1.00	1.00	1.00	1.00	1.00
Parameters:	Low (P90)	Base	High (P10)	Well 6508/1-2 was drilled by Det Norske and discovered oil and gas in the Lower to Middle Jurassic. Permeabilities taken from 6508/1-2 Well Completion Report.			
Depth to top of prospect [m MSLL] (> 0)	1665	1665	1665				
Area of closure [km ²] (> 0)	1.3	1.3	1.3				
Reservoir thickness [m] (< 0)	250	296	350				
HC column in prospect [m] (> 0)	50	51	52				
Gross rock vol. [10 ⁶ m ³] (> 0.000)	0.008	0.008	0.009				
Net / Gross [fraction] (0.00-1.00)	0.72	0.77	0.85				
Porosity [fraction] (0.00-1.00)	0.24	0.25	0.26				
Permeability [mD] (> 0)	31.0	94.0	460.0				
Water Saturation [fraction] (0.00-1.00)	0.59	0.58	0.57				
Bg [Rm ³ /Sm ³] (< 1.0000)	0.0001	0.0001	0.0001				
1/Bg [Sm ³ /Rm ³] (< 1.00)	0.88	0.89	0.90				
GOR, free gas [Sm ³ /Sm ³] (> 0)	235921	311239	359001				
GOR, oil [Sm ³ /Sm ³] (> 0)	41	46	50				
Recov. factor, oil main phase [fraction] (0.00-1.00)	0.23	0.25	0.27				
Recov. factor, gas ass. phase [fraction] (0.00-1.00)	0.23	0.25	0.27				
Recov. factor, gas main phase [fraction] (0.00-1.00)	0.55	0.70	0.74				
Recov. factor, liquid ass. phase [fraction] (0.00-1.00)	0.00	0.00	0.00				
Temperature, top res [°C] (>0)	52						
Pressure, top res [bar] (>0)	165						
Cut off criteria for N/G calculation	Porosity > 10 %	Permeability > 1mD	Vcl < 50 %	Imrapp. an geolog-int. Dato.	For NPD use:	Imrapp. an geolog-int. Dato.	
				NPD will insert value	Registert - int. Registrert Dato.	NPD will insert value	Kart oppdatert Kart dato
				NPD will insert value		NPD will insert value	NPD will insert value
				NPD will insert value		NPD will insert value	NPD will insert value
				NPD will insert value		NPD will insert value	NPD will insert value



Table A3: Tinghaug Prospect Data Sheet

Oil, Gas or O&G case:	Block 6508/1, 6508/2 (part), New Play (V/N)	Prospect name	Tinghaug	Discovery/Prospect/Lead	Outside play (V/N)	Prospect	Prospect ID (or New#)	NPD will insert value	NPD approved (Y/N)	Assessment Year	2019					
This is case no.:	1 of 1	Reported by company	Capricorn Norge	Reference document	PL 758 Relinquishment Report	Structural	Water depth (m MSL) (>0)	390	Seismic database (2D/3D)	3D						
Resources IN PLACE and RECOVERABLE	Main phase															
Volumes, this case	Associated phase															
In place resources	Oil [10 ⁶ Sm ³] (>0.00)	2,82	Base, Mode	13,60	Base, Mean	16,00	High (P10)	31,70	Low (P90)	0,62	Base, Mode	3,00	Base, Mean	3,52	High (P10)	6,97
Recoverable resources	Gas [10 ⁶ Sm ³] (>0.00)	0,94	Reservoir litho (from)	4,64	Source Rock, chrono primary	5,56	High (P10)	11,30	Source Rock, litho secondary	0,21	Base, Mode	1,02	Base, Mean	1,22	High (P10)	2,49
Reservoir Chrono (from)	Noran	Reservoir litho (to)	Greybeds	Source Rock, chrono secondary	Kimmeridgian	Source Rock, litho primary	Spekk Fm.	Seal Chrono	Seal, Litho	Tang Fm.						
Reservoir Chrono (to)	Sinemurian	Reservoir litho (to)	Ave fm.	Source Rock, chrono secondary		Source Rock, litho secondary										
Probability [fraction]	Total (oil + gas + oil & gas case) (0.00-1.00)	0,06	Oil case (0.00-1.00)	0,06	Gas case (0.00-1.00)	0,10	Oil & Gas case (0.00-1.00)	0,80								
Parameters:	Reservoir (P1) (0.00-1.00)	1,00	Trap (P2) (0.00-1.00)	0,70	Charge (P3) (0.00-1.00)	0,10	Retention (P4) (0.00-1.00)	0,80								
Depth to top of prospect (m MSL) (> 0)	1190	1200	1220	1220	Comments											
Area of closure (km ²) (> 0.0)	2,7	4,2	5,4													
Reservoir thickness (m) (> 0)	250	297	350													
HC column in prospect (m) (> 0)	20	69	120													
Gross rock vol. [10 ⁹ m ³] (> 0.000)	0,044	0,212	0,456													
Net / Gross [fraction] (0.00-1.00)	0,26	0,31	0,43													
Porosity [fraction] (0.00-1.00)	0,27	0,32	0,33													
Permeability (md) (> 0.0)	200,0	600,0	1000,0													
Water Saturation [fraction] (0.00-1.00)	0,35	0,28	0,20													
Big [Rm3Sm3] (< 1.0000)	0,98	0,90	0,92													
1/Bo [Sm3Rm3] (< 1.00)	2,10	2,20	2,30													
GOR, oil [Sm ³ /Sm ³] (> 0)	0,26	0,37	0,43													
GOR, free gas [Sm ³ /Sm ³] (> 0)	0,26	0,37	0,43													
Recov. factor, oil main phase [fraction] (0.00-1.00)	0,26	0,37	0,43													
Recov. factor, gas ass. phase [fraction] (0.00-1.00)	0,26	0,37	0,43													
Recov. factor, gas main phase [fraction] (0.00-1.00)	0,26	0,37	0,43													
Recov. factor, liquid ass. phase [fraction] (0.00-1.00)	0,26	0,37	0,43													
Temperature, top res [°C] (<0)	36															
Pressure, top res (bar) (<0)	120															
For NPD use:	Innrappr. av geolog-inn.	NPD will insert value	Registrert - innl.	NPD will insert value	Registrert Dato:	NPD will insert value	Kart oppdatert	NPD will insert value	Kart dato	NPD will insert value						
Out of criteria for Ni/G calculation	Vcl > 50%	Porosity > 10%	Permeability > 1md													



Table A4: Tasta Prospect Data Sheet

Oil, Gas or O&G case:	Block G5008/1	Prospect name	Tasta	Discovery/Prospl/Lead	Prospect	Prospl ID (or New?)	NPD will insert value	NPD approved (Y/N)	NPD will insert value
This is case no.:	Oil	New Play (Y/N)	Reported by company	Outside play (Y/N)	PL 758 Relinquishment Report			Assessment year	2018
Resources IN PLACE and RECOVERABLE	1 of 1	Structural element	Capricorn Norge Nordland Ridge	Reference document	Structural/Stratgr/Water depth (m MSL) (<0)	390		Seismic database (2D/3D)	3D
Volumes, this case		Main phase		Type of trap					
In place resources	Oil [10 ⁶ Sm ³] (>0.00)	Low (P90)	Base, Mode	Base, Mean	High (P10)	Low (P90)	Base, Mode	Base, Mean	High (P10)
	Gas [10 ⁶ Sm ³] (>0.00)	17.50	29.70	36.80	56.50	3.83	7.14	7.67	12.50
Recoverable resources	Oil [10 ⁶ Sm ³] (>0.00)	5.64	8.92	12.40	20.30	1.24	1.99	2.72	4.50
	Gas [10 ⁶ Sm ³] (>0.00)								
Reservoir Chrono (from)	Aalenian	Reservoir litho (from)	Ile Fm.	Source Rock, chrono primary	kimmeridgian	Source Rock, litho primary	Spekk Fm.	Seal Chrono	Callouan
Reservoir Chrono (to)	Bathonian	Reservoir litho (to)	Gain Fm.	Source Rock, chrono secondary		Source Rock, litho secondary		Seal Litho	Welke Fm.
Probability (fraction)									
Total (oil + gas + oil & gas case) (0.00-1.00)	0.06	Oil case (0.00-1.00)	0.06	Gas case (0.00-1.00)	0.00	Oil & Gas case (0.00-1.00)	0.00		
Reservoir (P1) (0.00-1.00)	0.90	Trap (P2) (0.00-1.00)	0.70	Charge (P3) (0.00-1.00)	0.10	Retention (P4) (0.00-1.00)	1.00		
Parameters:		Low (P90)	Base	High (P10)	Comments				
Depth to top of prospect (m MSL) (> 0)	1370	1390	1410						
Area of closure (km ²) (> 0.0)	8.8	14.5	18.7						
Reservoir thickness (m) (> 0)	13	21	29						
HC column in prospect (m) (> 0)	115	210	319						
Gross rock vol. [10 ⁶ m ³] (> 0.000)	0.145	0.285	0.439						
Net / Gross (fraction) (0.00-1.00)	0.61	0.70	0.79						
Porosity (fraction) (0.00-1.00)	0.25	0.28	0.30						
Permeability (mD) (> 0.0)	200.0	600.0	1000.0						
Water Saturation (fraction) (0.00-1.00)	0.35	0.27	0.20						
Bg [m3/Sm3] (< 1.0000)									
1/Bg [Sm3/Rm3] (< 1.00)	0.88	0.90	0.92						
GOR, free gas [Sm ³ /Sm ³] (< 0)									
GOR, oil [Sm ³ /Sm ³] (> 0)	2.10	2.20	2.30						
Recov. factor, oil main phase (fraction) (0.00-1.00)	0.26	0.35	0.43						
Recov. factor, gas ass. phase (fraction) (0.00-1.00)	0.26	0.35	0.43						
Recov. factor, gas main phase (fraction) (0.00-1.00)									
Recov. factor, liquid ass. phase (fraction) (0.00-1.00)									
Temperature, top res [°C] (<0)	40	For NPD use							
Pressure, top res [bar] (<0)	130	Inmrap, av geolog-init. NPD will insert value							
Cut off criteria for M/G calculation	Vcl < 50%	Porosity > 10%	Permeability > 1mD	NPD will insert value		Register - init. NPD will insert value	Register Dato. NPD will insert value	Kart oppdatert. NPD will insert value	Kart dato. NPD will insert value



Table A5: Erdinger Lead Data Sheet

Block/6508/r1, 6508/r10	Play name	Prospect name	Erdinger	Discovery/Prospect/Lead	Lead	Prosp ID (or New#)	NPD approved (Y/N)	Assessment year
	NPD will insert value	New Play (Y/N)		Outside play (Y/N)				2019
Oil, Gas or O&G case:	Oil	Reported by company	Capricorn Norge	Reference document	PL 758 Relinquishment Report			
This is case no.:	1 of 1	Structural element	Danna Terrace	Type of trap	Stratigraphic	Water depth (m MSJ) (<0)	390	Sismic database (2D/3D)
Resources in PLACE and RECOVERABLE		Main phase				Associated phase		
Volumes, this case		Low (P90)	Base, Mode	Base, Mean	High (P10)	Low (P90)	Base, Mode	Base, Mean
In place resources	Oil [10 ⁶ Sm ³] (>0.00)	1.99	5.93	6.53	11.80	0.44	1.30	1.44
	Gas [10 ⁶ Sm ³] (>0.00)				4.21	0.15	0.44	0.50
Recoverable resources	Oil [10 ⁶ Sm ³] (>0.00)	0.66	2.00	2.27				
	Gas [10 ⁶ Sm ³] (>0.00)							
Reservoir Chrono (from)	kimmeridgian	Reservoir litho (from)	Roqn Fm.	Source Rock, chrono primary	kimmeridgian	Source Rock, litho primary	Spekk Fm.	Seal, Chrono
Reservoir Chrono (to)	Tithonian	Reservoir litho (to)	Roqn Fm.	Source Rock, chrono secondary		Source Rock, litho secondary	Seal, Litho	Tithonian
								Spekk Fm.
Probability (fraction)								
Total (oil + gas + oil & gas case) (0.00-1.00)	0.11	Oil case (0.00-1.00)	0.11	Gas case (0.00-1.00)	0.00	Oil & Gas case (0.00-1.00)	0.00	
Reservoir (P1) (0.00-1.00)	0.40	Trap (P2) (0.00-1.00)	0.70	Charge (P3) (0.00-1.00)	0.40	Retention (P4) (0.00-1.00)	1.00	
Parameters:	Low (P90)	Base	High (P10)	Comments				
Depth to top of prospect [m MSJ] (> 0)	1370	2400	1410					
Area of closure [km ²] (> 0.0)	2.7	5.6	8.0					
Reservoir thickness [m] (> 0)	20	30	40					
HC column in prospect [m] (> 0)	120	200	296					
Gross rock vol [10 ⁹ m ³] (> 0.000)	0.051	0.146	0.236					
Net / Gross [fraction] (0.00-1.00)	0.26	0.40	0.57					
Porosity [fraction] (0.00-1.00)	0.13	0.16	0.20					
Permeability [mD] (> 0.0)	10.0	100.0	300.0					
Water Saturation [fraction] (0.00-1.00)	0.35	0.27	0.20					
Bg [m3/m3] (< 1.0000)								
1/b0 [Sm3/m3] (< 1.00)	0.98	0.90	0.92					
GOR, free gas [Sm ³ /Sm ³] (> 0)								
GOR, oil [Sm ³ /Sm ³] (> 0)	2.10	2.20	2.30					
Recov factor, oil main phase [fraction] (0.00-1.00)	0.26	0.37	0.43					
Recov factor, gas ass. phase [fraction] (0.00-1.00)	0.26	0.37	0.43					
Recov factor, gas main phase [fraction] (0.00-1.00)								
Recov factor, liquid ass. phase [fraction] (0.00-1.00)								
Temperature, top res [°C] (>0)	85			For NPD use:				
Pressure, top res [Daf] (>0)	240			Intrapp. av geolog-init. Dato	NPD will insert value	Registrert -init. Dato	NPD will insert value	NPD will insert value
Out of criteria for N/G calculation	Vci < 50%	Porosity > 10%	Permeability > 1mD		NPD will insert value	Registrert Dato	NPD will insert value	Kart dato
					NPD will insert value		NPD will insert value	Kart nr



Table A7: Røsslyng Lead Data Sheet

Oil, Gas or O&G case:	Block 6608/10 NPD will insert value	Prospect name	Russlyng	Discovery/ProsplLead	Lead	Prospl ID (or New)	NPD will insert value	NPD approved (Y/N)		
This is case no.:	Oil 1 of 1	Reported by company	Capricorn Norge	Reference document	PL 758 Relinquishment Report	Water depth (m MSL) (>0)	390	Assessment, year	2019	
Resources IN PLACE and RECOVERABLE	Main phase	Structural element	Nordland Ridge	Type of trap	Structural	Seismic database (2D/3D)	3D			
Volumes, this case	Low (P90)	Base, Mode	Base, Mean	High (P10)	Low (P90)	Base, Mode	Base, Mean	High (P10)		
In place resources	Oil [10 ⁶ Sm ³] (>0.00)	0.67	4.11	5.34	11.30	0.90	1.18	2.50		
	Gas [10 ⁶ Sm ³] (>0.00)	0.24	1.40	1.90	4.13	0.05	0.31	0.90		
Recoverable resources	Reservoir Chrono (from)	Reservoir litho (from)	Source Rock, chrono primary	Reservoir Chrono (to)	Reservoir litho (to)	Source Rock, chrono secondary	Source Rock, litho primary	Seal, Chrono		
	Norian	Greybeds	Source Rock, chrono primary	Hettangian	Ave fm.	Source Rock, chrono secondary	Spekket Fm.	Seal, Litho		
Probability Fraction	Oil case (0.00-1.00)	Trap (P2) (0.00-1.00)	Oil & Gas case (0.00-1.00)	Retention (P4) (0.00-1.00)	Charge (P3) (0.00-1.00)	Retention (P4) (0.00-1.00)	Oil & Gas case (0.00-1.00)	Retention (P4) (0.00-1.00)		
Total (oil + gas + oil & gas case) (0.00-1.00)	0.04	1.00	0.04	1.00	0.10	0.10	0.40	0.40		
Parameters:	Low (P90)	Base	High (P10)	Comments						
Depth to top of prospect [m MSL] (> 0)	1220	1240	1260							
Area of closure [km ²] (> 0.0)	0.6	2.0	3.4							
Reservoir thickness [m] (> 0)	250	297	350							
H/C column in prospect [m] (> 0)	30	65	100							
Gross rock vol. [10 ⁹ m ³] (> 0.000)	0.009	0.055	0.146							
Net / Gross [fraction] (0.00-1.00)	0.30	0.31	0.51							
Porosity [fraction] (0.00-1.00)	0.27	0.32	0.33							
Permeability [mD] (> 0.0)	200.0	600.0	1000.0							
Water Saturation [fraction] (0.00-1.00)	0.35	0.28	0.20							
Bq [Rm ³ /Sm ³] (< 1.0000)	0.88	0.90	0.92							
1/Bq [Sm ³ /Rm ³] (< 1.000)	1.14	1.11	1.09							
GOR, oil [Sm ³ /Sm ³] (> 0)	210	220	230							
GOR, free gas [Sm ³ /Sm ³] (> 0)	0.26	0.37	0.43							
Recov. factor, oil main phase [fraction] (0.00-1.00)	0.26	0.37	0.43							
Recov. factor, gas ass. phase [fraction] (0.00-1.00)	0.26	0.37	0.43							
Recov. factor, gas main phase [fraction] (0.00-1.00)	0.26	0.37	0.43							
Recov. factor, liquid ass. phase [fraction] (0.00-1.00)	0.26	0.37	0.43							
Temperature, top res [°C] (>0)	37									
Pressure, top res [bar] (>0)	124									
Cut-off criteria for M/G calculation	Vcl < 50%	Porosity > 10%	Permeability > 1mD	For NPD use:	Immagp. av.geolog-int. Dato:	NPD will insert value	Registrar - int. Registrert Dato:	NPD will insert value	Kart oppdatert. Kart dato	NPD will insert value
						NPD will insert value			Kart nr.	NPD will insert value