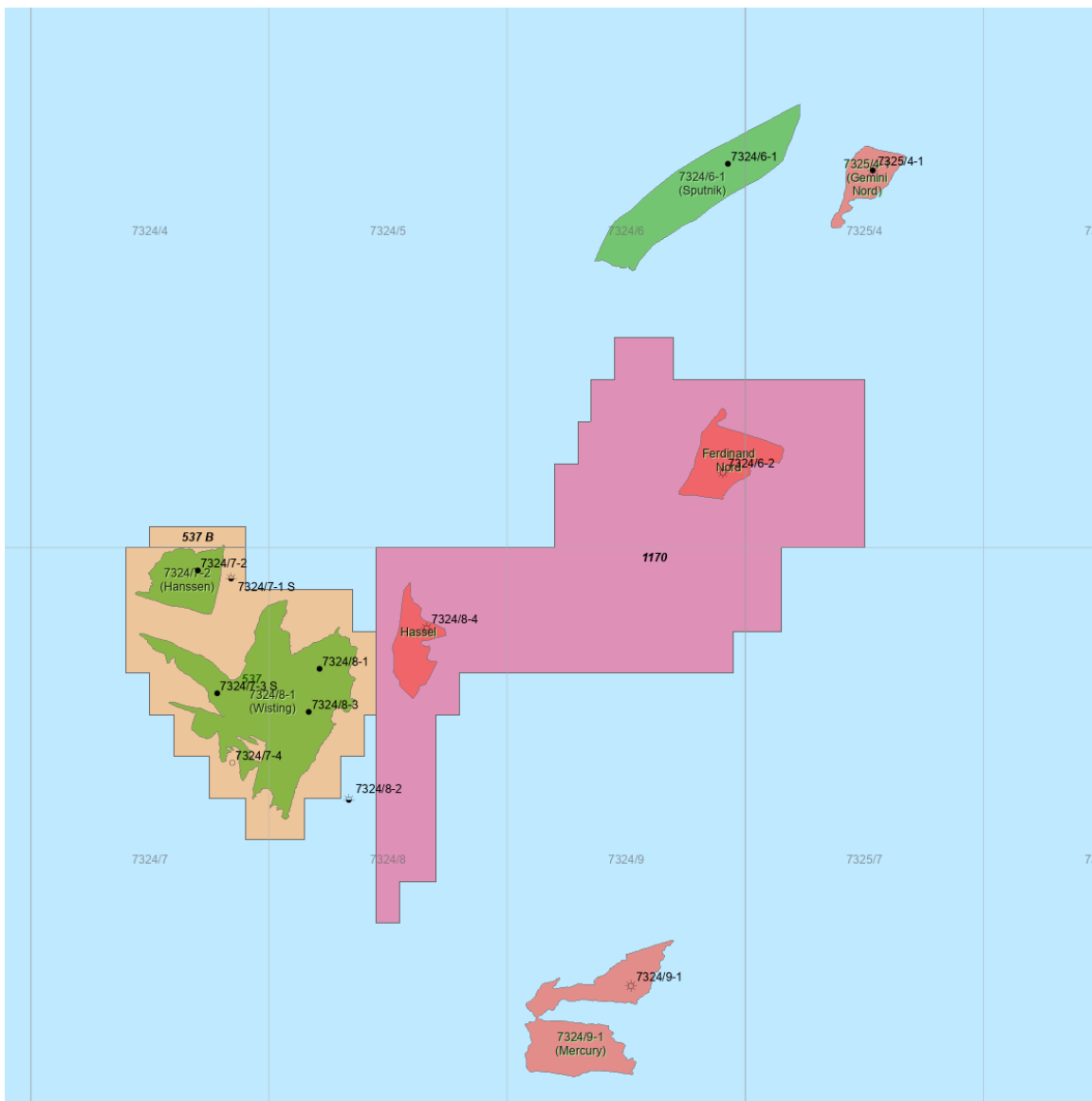


PL1170 Status Report Relinquishment



1 License history

PL1170 was awarded March 11th, 2022 as part of APA2021 application round. The licence group consists of

- Aker BP ASA (O) 35%
- Equinor Energy AS 35%
- Petoro AS 20%
- Inpex Idemitsu Norge AS 10%

The goal of the exploration licence was to find additional oil resources for a potential Wisting development.

Work commitments

- Study of geology and geophysics
- Acquire new 3D seismic
- Acquire EM data
- Drill & Drop within 3 years

The work program has been completed, and two wells have been drilled on the Hassel and Ferdinand prospects during the summer of 2024. Both wells found dry gas in quantities far from being economically valuable. Before drilling, the main risk for the prospects was related to which hydrocarbon phase was present. Only oil discoveries were considered a success.

A unanimous decision to relinquish PL1170 was made in Q3 2025.

Meeting activity

An overview of licence meetings is given in Table 1.1.

Table 1.1 Licence Meetings

Date	Activity	Descriptions
2022		
March 28	ECMC#1	Licence start up
June 22	ECMC#2	Combined PL1133, cost split 3D acquisition
September 27	EC#1	Seismic Processing start up
November 11	ECMC#3	End of year meeting
2023		
January 17-18	EC#2 Work shop (2 days)	Seismic Interpretation, Depth conversion and CSEM
February 15	EC#3	Volume and Risk, Tech Ec evaluation, Well Locations
March 24	EC#4	Data Acquisition Ferdinand Nord Well
May 15	EC#5	Rock Physics (ABP& Dig Science)
May 24	EC#6	Status Well Planning (Ferdinand) & Hassel Prospect Evaluation
August 22	EC#7	Well Planning status, Data acquisition and Cost
October 25	EC#8	Updated Business Cases
December 06	ECMC#4	End of year meeting (Combined PL1133)
2024		
May 07	ECMC#5	Scarabeo 8 Readiness
June 10	EC#9	Preliminary Well Results Ferdinand Nord (Decision to not drill Viasat Prospect)
August 21	EC#10	Summary of Well operations. Status of planned post well studies
October 31	EC#11	Core Work Shop (Stratum/Sandnes)
November 27	ECMC#6	En of year meeting
2025		
May 15	EC#12	Final post well presentations, presentation of remaining prospectivity and recommendation of a total relinquishment

Reason for surrender

The remaining prospects have insufficient resource potential and excessive risk to justify a drilling decision.

2 Database

Fig. 2.1 gives an overview of the seismic 3D surveys, key wells and CSEM surveys, used in the evaluation of PL1170.

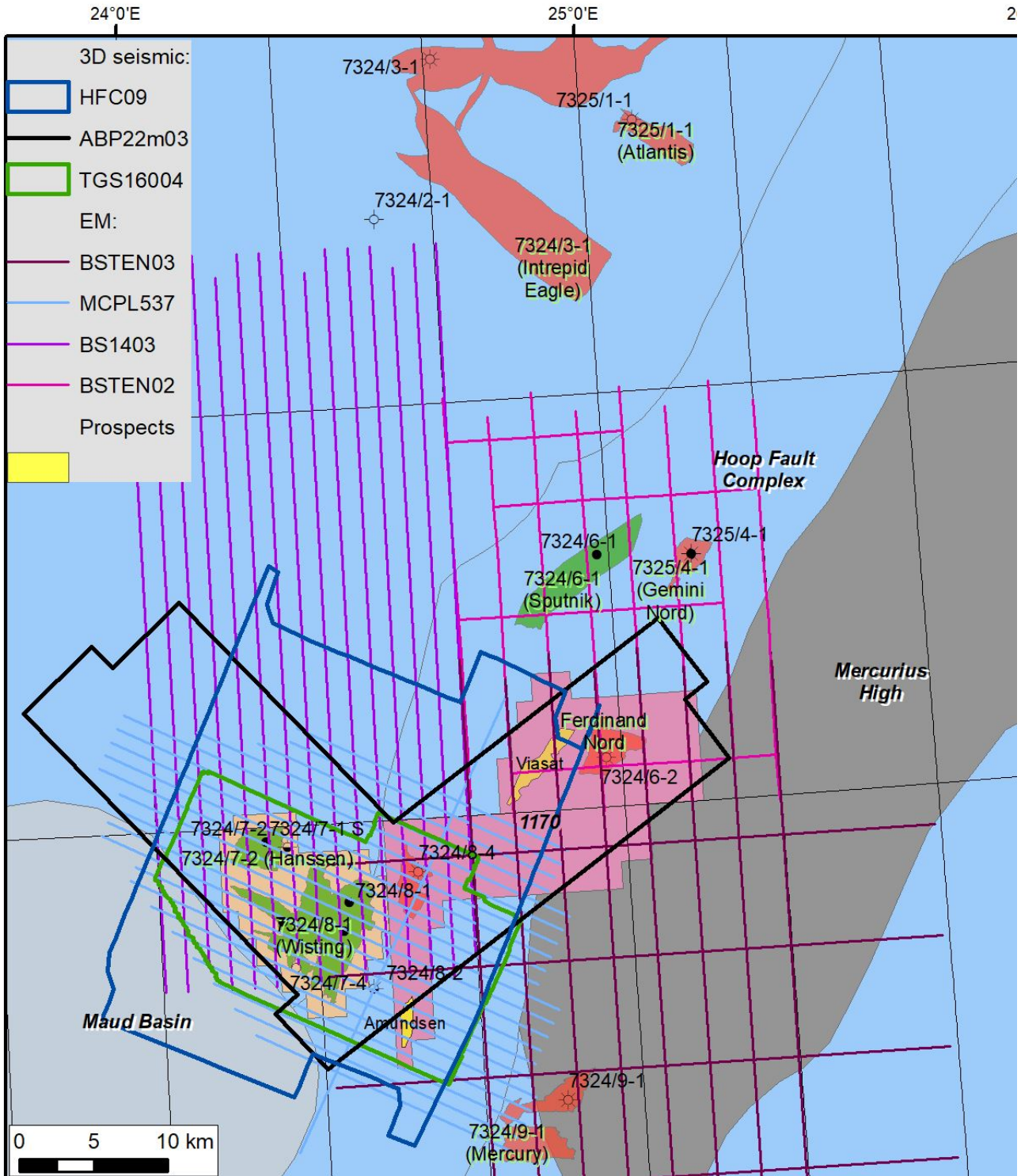


Fig. 2.1 Overview Map Showing licence area, key wells, 3D seismic outline and EM surveys. The figure shows only the most relevant remaining prospects in the licence acreage.

2.1 Seismic data

The main dataset used in the evaluation is the newly acquired 3D "HalfSeis", ABP22m03 (Table 2.1 and Fig. 2.1). AKB22m03 consists of the two surveys LU22001 and LU22002 and covers the Wisting Discovery and almost the entire PL1170. The surveys were acquired by PGS during the summer 2022 and processed by DUG as a part of the work commitment in the licence. Final data was delivered in November 2023. 3D survey HFC09 covers the southern part of the licence acreage (e.g Amundsen Prospect). The high resolution TGS16004 was mainly used for detailed interpretation of the Hassel Structure.

Table 2.1 Seismic Database

Name	Type	Year	Offset Data	Area	NPD ID
LU22001	3D Licence	2022	Yes	Bjarmeland Platform	10424
LU22002	3D Licence	2022	Yes	Bjarmeland Platform/ Hoop Fault Complex	10427
HFC09 (part of TGS0901)	3D Multi Client	2009	Yes	Bjarmeland Platform m.m	7060
TGS16004	3D Multi Client	2016	NO	Bjarmeland Platform/ Hoop Fault Complex	8353

2.2 Well Data

The exploration wells included in the geological and geophysical evaluation are displayed in Table 2.2 and shown in Fig. 2.1.

The well database has been used for stratigraphic framework, seismic to well tie, prospect and risk assessment.

Table 2.2 Well Database (in chronological order)

Well	Operator	Year	Content	TD [m MD RKB]	TD Stratigraphy Age/ Formation	NPDID
7324/8-1 (Wisting Main)	OMV	2013	Oil (Stø)	930	Triassic Snadd Fm.	7221
7324/7-1S (Wisting Alternative)	OMV	2013	Dry/Shows	2535	Triassic Kobbe Fm.	7222
7324/2-1 (Apollo)	Statoil	2014	Dry	1090	Triassic Snadd Fm.	7481
7324/7-2 (Hanssen)	OMV	2014	Oil (Stø)	1730	Triassic Snadd Fm.	7450
7325/1-1 (Atlantis)	Statoil	2014	Gas (Snadd)	2865	Triassic Havert Fm.	7501
7324/9-1 (Mercury)	Statoil	2014	Gas (Stø)	1100	Triassic Snadd Fm.	7527
7324/8-2 (Bjaaland)	OMV	2015	Dry/shows	3812	Triassic Snadd Fm.	7681
7324/7-3S (Wisting Appraisal)	OMV	2016	Oil (Stø)	2354	Jurassic Stø Fm.	7875
7325/4-1 (Gemini Nord)	Statoil	2017	Gas (Stø) Oil (Snadd)	1210	Triassic Snadd Fm.	8211
7324/8-3 (Wisting II)	OMV	2017	Oil (Stø)	840	Triassic Fruholmen Fm.	8239
7324/3-1 (Intrepid Eagle)	Equinor	2018	Gas (Snadd/Stø)	1709	Triassic Snadd Fm.	8568
7324/6-1 (Sputnik)	Equinor	2019	Oil (Snadd Fm)	1600	Triassic Snadd Fm.	8741
7324/6-2 (Ferdinand Nord)	Aker BP	2024	Gas (Stø)	1280	Triassic Snadd Fm.	10097
7324/8-4 (Hassel)	Aker BP	2024	Gas (Stø)	815	Triassic Snadd Fm.	10096

2.3 CSEM data

Aker BP has used CSEM in its exploration strategy for the Barents Sea for over 10 years. In the Hoop/Bjarmeland area, this technology has a unique position for evaluating Jurassic prospectivity as it has not failed so far. All Jurassic prospects drilled in the area are associated with elevated seismic amplitudes; however, only those with EM anomalies have led to discoveries. Direct Hydrocarbon Indicators (DHI) in the seismic is of that reason crucial but not sufficient. The seismic DHI can be set up by low saturation hydrocarbons, but EM anomalies prove hydrocarbon-filled structures with high saturation. The licence group has acquired EM surveys in the area covered by PL1170 (Table 2.3 and Fig. 2.1) and Aker BP has conducted its own inversion in addition to using EMGS's evaluation.

Table 2.3 CSEM Database (Electro Magnetic Surveys)

Name	Type	Company	Year	Area	NPDID
BSTEN03 (part of EMGS1001)	3D Multi Client	EMGS	2010	Bjarmeland Platform	7772
BS1403 (part of EMGS1404)	3D Multi Client	EMGS	2014	Bjarmeland Platform	7978
MCPL537 (part of EMGS1404)	3D Multi Client	EMGS	2014	Bjarmeland Platform	7978
BSTEN02 (part of EMGS1001)	3D Multi Client	EMGS	2010	Bjarmeland Platform	7772

3 Geological and geophysical studies

The following geophysical studies have been carried out

1. Acquisition and processing of LU22001 and LU2202 (ABP22m03)
2. CSEM interpretation of different EM-surveys (Table 2.3)
3. AVO studies; both external (Dig Technology) and internal work

3D seismic survey ABP22m03 (HalfSeis)

"HalfSeis" is a further development and simplification of the "source-over-cable" acquisition geometry called "TopSeis." They are both designed to address the seismic imaging challenges of the relatively shallow targets within the high-velocity setting of the Barents Sea platform. With HalfSeis, a wide, multi-source spread is towed above the front ends of the streamers. The main objective of this layout is to improve the illumination and spatial sampling of the reflections from the shallow targets.

The HalfSeis acquisition geometry provides very dense cross-line and in-line sampling, which improves the resolution of the shallow Stø reservoir. Furthermore, this geometry also records the near and zero offsets, enabling proper AVO analysis of the Stø Formation.

CSEM inversion results

A 2D inversion of the BSTEN02 and 03 surveys was carried out by the operator and used in the evaluation of the Viasat, Hassel and Ferdinand structures. In addition, a former inversion from Equinor was used for evaluation of the Amundsen Prospect.

AVO study

Dig Deep Methodology (DIG Technology)

Dig Technology performed AVO feasibility modeling, AVO classification and density inversion for the different prospect. With the Dig Deep workflow, both diagenetic and depositional processes are taken into account in the rock physics modeling. The model assume that the Stø Formation reservoir sands have been buried to depth and temperatures where chemical compaction and quartz cementation have just started. Then, during Cenozoic, the reservoir sandstones have been uplifted almost 2km. The presence of cement has a very strong effect on rock stiffness and fluid sensitivities, and therefore on the AVO signatures, that can vary locally and regionally with varying burial history. In addition, AVO signatures can also be affected by local facies trends. The observed AVO in the drilled prospects is class 3, which can be explained both by oil and gas.

PCube Methodology (Aker BP)

To investigate AVA (Amplitude vs Angle) behaviour of the area of interest, a Bayesian-based inversion called Pcube, was performed. In PCube, probabilities for different lithology-fluid classes from seismic data and geological knowledge are calculated.

The method combines stochastic rock physics relations between the elastic parameters and the different lithology-fluid classes, with the results from a fast Bayesian seismic simultaneous inversion from seismic data to elastic parameters integrating knowledge generated by different subsurface disciplines. Thus, it enables the maximum synergy.

The process involves the following major steps:

- Define a lithology-fluid class dictionary & Simultaneous inversion of Angle stacks
- Compute the probability for each of the lithology-fluid classes in the dictionary at every point in the subsurface

The conclusion from the internal study is that it is possible to distinguish the HC footprint from brine; however, it is difficult to distinguish between oil and gas fluids. It is also difficult to distinguish low saturation from high saturation gas accumulations

4 Prospect update

A short summary of the two wells drilled in PL1170 is given below:

7324/6-2 (Ferdinand)

- Well 7324/6-2 was drilled to 1279 m MD (1245 m TVD MSL), and was terminated in the Snadd Formation in the Upper Triassic. The well encountered a 12-metre thick Stø Formation, with a 9-metre gas filled net reservoir in two sandstone layers with good to very good reservoir quality. The gas/water contact was not found. The well did not encounter reservoir quality rocks in the Fruholmen Formation. Above the secondary target, gas was sampled in an interval totalling 18 meters of sandstones, 4 meters of pay zone, of moderate to poor reservoir quality in the Snadd Formation. The gas/water contact was not encountered in this intra-Snadd channel either. The secondary exploration target in the Snadd Formation comprised a total of about 40 metres of sandstone with poor reservoir quality (mostly tight) and traces of hydrocarbons.

7324/8-4 (Hassel)

- Well 7324/8-4 was drilled to 815 m MD (781 m TVD MSL), and was terminated in the Snadd Formation in the Upper Triassic. The well encountered a 30m thick Stø Formation with good to very good reservoir properties and a 10-meter gas column. The gas-water contact was encountered at 683 meters MSL.

The remaining prospects in PL1170 are all belonging to the Jurassic play-model (Stø Fm sandstone), the same play that was tested by 7324/6-2 (Ferdinand N) and 7324/8-4 (Hassel) (Fig. 4.1 and Fig. 4.2). The discovery of "gas only" in the Ferdinand Nord and Hassel structures has significantly impacted how fluid phases are assessed in the area. For the remaining Viasat and Ferdinand segments, the probability of oil has been greatly reduced, and there is no longer any belief in finding oil in these structures. The reasons for that are:

- The location between the two gas discoveries (Hassel/Ferdinand N)
- Have the same seismic response as Ferdinand Nord, showing only one seismic amplitude shut-off

In addition to being seismic amplitude-driven prospects, all remaining prospects are also assessed in regard to electromagnetism (EM). How this is assessed in the evaluation is mostly based on empiricism. The main conclusions are:

- Seismic DHIs are crucial for making a discovery, but not sufficient (leaked structures have also depth conform seismic amplitude anomalies)
- All discoveries are associated with EM anomalies
- All oil discoveries have two seismic shut-off levels, indicating gas over oil
- All gas discoveries have only one seismic shut-off level

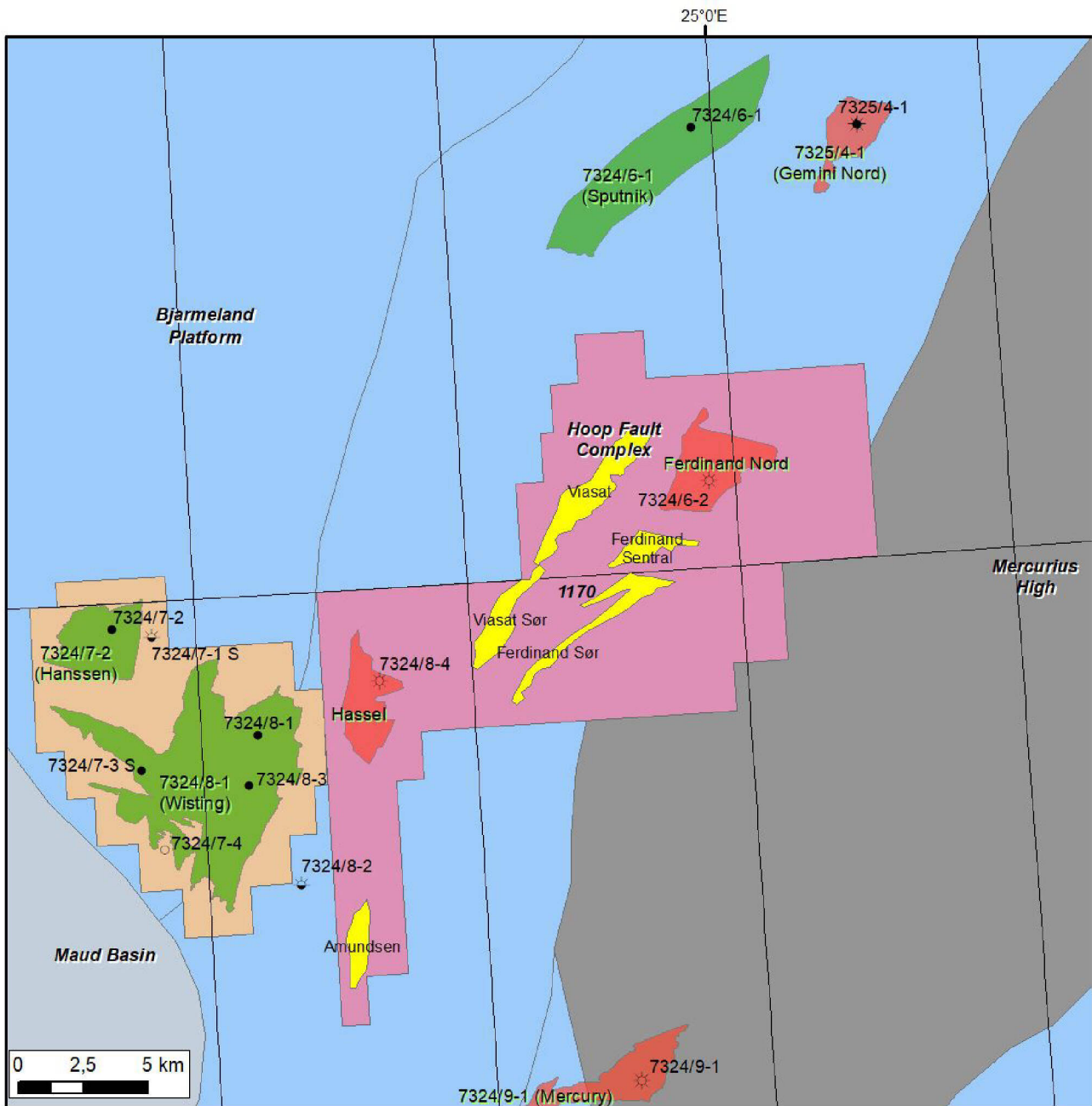


Fig. 4.1 Remaining Prospectivity PL1170

Ferdinand Sentral and Sør segments

The remaining Ferdinand segments are two-way, fault bounded structural traps. Both segments have associated seismic amplitude anomalies (Fig. 4.2) that may indicate hydrocarbon filling, [REDACTED]. The likelihood of finding oil in these structures are very low (discussed above). Hence, the possibilities of finding gas is very high. In terms of resources, these two segments together are smaller than Ferdinand Nord. Knowing that Ferdinand Nord only proved 0.5 G of recoverable gas, the volume of the remaining Ferdinand segments are of no interest. For that reason the volumetric calculation is left out of this report.

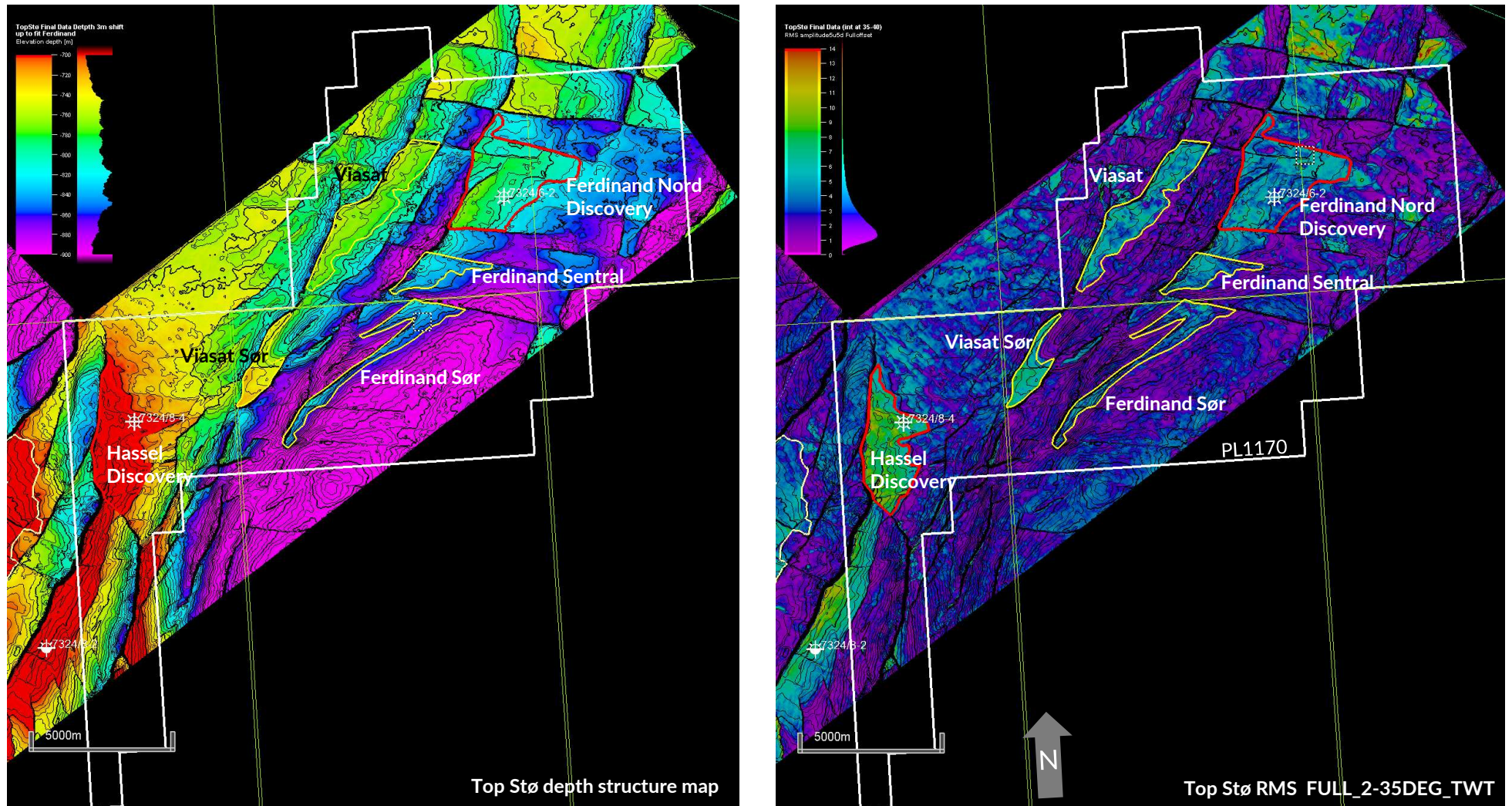


Fig. 4.2 Top Stø Formation depth map and RMS attribute map Showing remaining Ferdinand and Viasat segments

Viasat and Viasat Sør

The somewhat shallower Viasat segments are located just northwest of the Ferdinand trend but have similar structural trapping mechanisms. The seismic amplitude anomalies at the Stø Formation level show very good shut-off conformance to depth (Fig. 4.2 and Fig. 4.3). The Viasat Prospect was part of the drilling campaign during summer of 2024, but was dropped due to the Ferdinand well results. A positive drill decision was depended on an oil discovery at Ferdinand Nord. The prospect assessment of Viasat is shown in Table 4.1. The volumetric calculation for Viasat Sør is left out of this report due to very limited resource potential.

Amundsen Prospect

The Amundsen Prospect was not part of the ABP22m03 3D seismic acquisition. The prospect evaluation is therefore not based on new data since the APA2021 evaluation. The prospect is a three-way, fault bounded structural trap, located just south-east of the Bjaaland Structure (Fig. 4.4). The prospect is associated with a subtle seismic amplitude anomaly response [REDACTED]. Fig. 4.5 shows the prospect in connection with the Bjaaland and Hassel structures, pointing out the uncertainties in predicting reservoir thickness. Recoverable volumes in the Amundsen prospect are too small to be of commercial interest. The prospect assessment of Viasat is shown in Table 4.2.

Triassic Play

In addition to test the Jurassic Play (main target), 7324/6-2 (Ferdinand) tested a deeper intra Snadd channel complex (Target 2, Fig. 4.3). The well encountered a 40m thick, multistorey fluvial channel-fill sandstone. The sandstone was fine to lower fine-grained, largely structureless in lower part and cross-stratified in upper part. The whole section had poor reservoir quality (mostly tight) and traces of hydrocarbons. No remaining Triassic prospects remain in PL1170.

Table 4.1 Viasat Prospect (Sodir Table 5)

Block	7324/6	Prospect name	Viasat	Discovery/Prosp/Lead	Prospect	Prosp ID (or New!)	NPD will insert value	NPD approved (Y/N)	
Play name	NPD will insert value	New Play (Y/N)		Outside play (Y/N)					
Oil, Gas or O&G case:	Gas	Reported by company		Reference document				Assessment year	
This is case no.:		Structural element	Hoop Fault Complex	Type of trap	1.1.1 Up-thrown trap	Water depth [m MSL] (>0)	430	Seismic database (2D/3D)	3D
Resources IN PLACE and RECOVERABLE		Main phase			Associated phase				
Volumes, this case		Low (P90)	Base, Mode	Base, Mean	High (P10)	Low (P90)	Base, Mode	Base, Mean	High (P10)
In place resources	Oil [10 ⁶ Sm ³] (>0.00)								
	Gas [10 ⁹ Sm ³] (>0.00)	0.57	0.66	0.67	0.79				
Recoverable resources	Oil [10 ⁶ Sm ³] (>0.00)								
	Gas [10 ⁹ Sm ³] (>0.00)	0.27	0.33	0.34	0.40				
Reservoir Chrono (from)	Norian	Reservoir litho (from)	Reke mbr	Source Rock, chrono primary	Anisian	Source Rock, litho primary	Steinkobbe fm	Seal, Chrono	Callovian
Reservoir Chrono (to)		Reservoir litho (to)	Stø fm	Source Rock, chrono secondary		Source Rock, litho secondary		Seal, Litho	Fuglen fm
Probability [fraction]									
Technical (oil + gas + oil & gas case) (0.00-1.00)	0.86	Oil case (0.00-1.00)	0.00	Gas case (0.00-1.00)	0.86	Oil & Gas case (0.00-1.00)	0.00		
Reservoir (P1) (0.00-1.00)	1.00	Trap (P2) (0.00-1.00)	0.95	Charge (P3) (0.00-1.00)	0.90	Retention (P4) (0.00-1.00)	1.00		
Parameters:		Low (P90)	Base	High (P10)	Comments:				
Depth to top of prospect [m MSL] (> 0)	760	760	760	Mean values have here been used as the base case for the input parameters.					
Area of closure [km ²] (> 0.0)	4.9	5.5	6.0	In the petrophysical evaluation of the reservoir parameters for the reference wells, the Thomas Stieber (1975) method was utilised for most of the wells. This method utilises cut-offs for net res fraction and porosity. (Net res fraction is the fraction of the desired facies that is of reservoir quality; net reservoir rock/ net sand). Gross rock volume is the HC-bearing gross volum, that is the GRV calculated down to the HCW contact Retention (P4) after accumulation, is part of the trap risk.					
Reservoir thickness [m] (> 0)	12.4	15.0	17.6						
HC column in prospect [m] (> 0)	14	15	17						
Gross rock vol. [10 ⁹ m ³] (> 0.000)	0.051	0.060	0.069						
Net / Gross [fraction] (0.00-1.00)	0.73	0.76	0.79						
Porosity [fraction] (0.00-1.00)	0.19	0.20	0.21						
Permeability [mD] (> 0.0)									
Water Saturation [fraction] (0.00-1.00)	0.24	0.26	0.28						
Bg [Rm3/Sm3] (< 1.0000)	0.0095	0.0100	0.0105						
1/Bo [Sm3/Rm3] (< 1.00)									
GOR, free gas [Sm ³ /Sm ³] (> 0)									
GOR, oil [Sm ³ /Sm ³] (> 0)									
Recov. factor, oil main phase [fraction] (0.00-1.00)									
Recov. factor, gas ass. phase [fraction] (0.00-1.00)									
Recov. factor, gas main phase [fraction] (0.00-1.00)	0.45	0.50	0.55						
Recov. factor, liquid ass. phase [fraction] (0.00-1.00)	0.45	0.50	0.55	For NPD use:					
Temperature, top res [°C] (>0)				Innrapp. av geolog-init:	NPD will insert value	Registrert - init:	NPD will insert value	Kart oppdatert	NPD will insert value
Pressure, top res [bar] (>0)				Dato:	NPD will insert value	Registrert Dato:	NPD will insert value	Kart dato	NPD will insert value
Cut off criteria for N/G calculation	1.	2.	3.					Kart nr	NPD will insert value

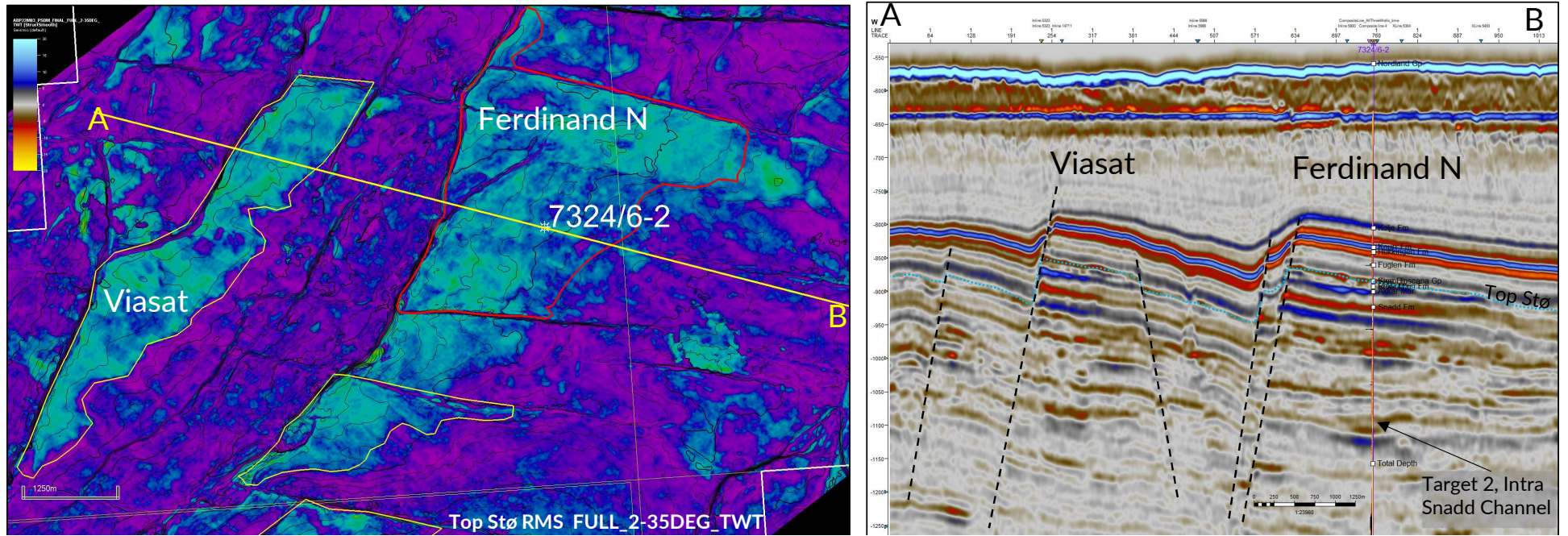


Fig. 4.3 Viasat Prospect Seismic Line E-W Showing seismic image of Viasat Prospect and Ferdinand Nord gas discovery.

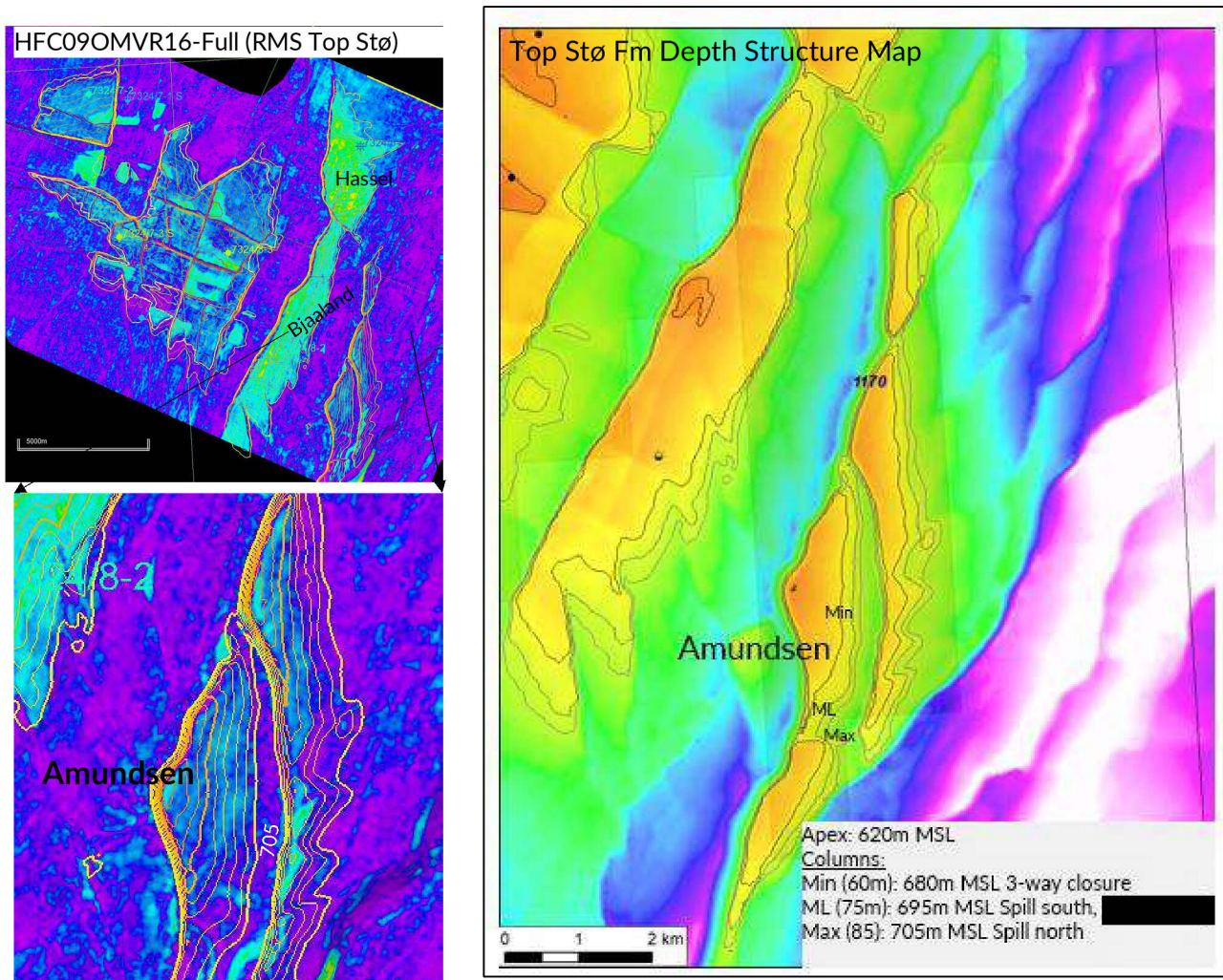


Fig. 4.4 Amundsen Prospect; Top Stø depth and amplitude map *Top Stø depth structure map to the right showing the minimum- most likely and maximum oil-water-contacts used in the prospect evaluation. RMS map top the left showing a subtle increase of the seismic amplitude across the prospect with a possible gas-oil-contact just below apex of 620m (gas volumes are not included in the evaluation).*

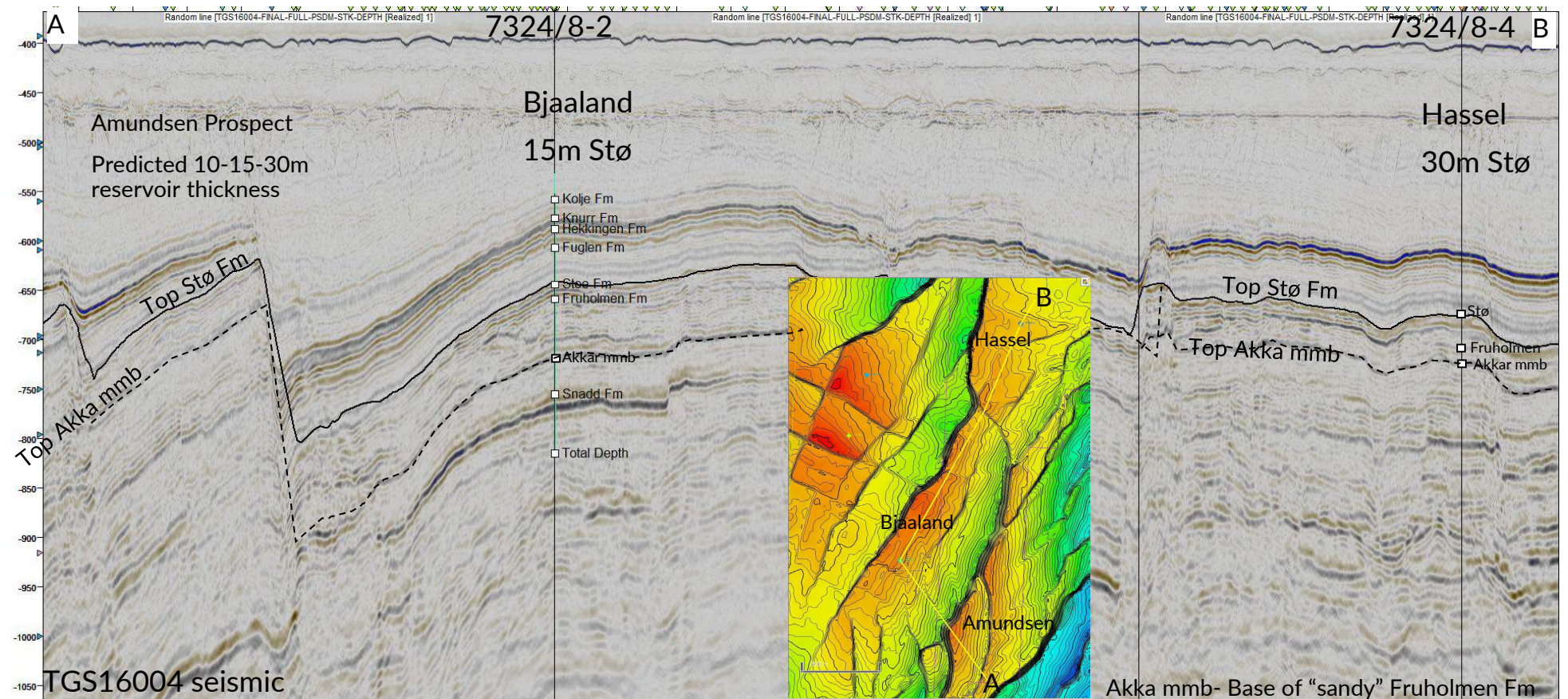


Fig. 4.5 Amundsen Prospect (Seismic tie line) Seismic arbitrary line from Hassel via Bjaaland to the Amundsen Prospect. Showing Top Stø and intra Fruholmen (Top Akkar member) and point out the uncertainty in reservoir thickness mapping,

Table 4.2 Amundsen Prospect (Sodir Table 5)

Block	7324/8	Prospect name	Amundsen	Discovery/Prosp/Lead	Prospect	Prosp ID (or New!)	NPD will insert value	NPD approved (Y/N)	
Play name	NPD will insert value	New Play (Y/N)		Outside play (Y/N)					
Oil, Gas or O&G case:	Oil	Reported by company		Reference document				Assessment year	
This is case no.:		Structural element	Hoop Fault Complex	Type of trap	1.1.1 Up-thrown tra	Water depth [m MSL] (>0)	430	Seismic database (2D/3D)	3D
Resources IN PLACE and RECOVERABLE		Main phase			Associated phase				
Volumes, this case		Low (P90)	Base, Mode	Base, Mean	High (P10)	Low (P90)	Base, Mode	Base, Mean	High (P10)
In place resources	Oil [10 ⁶ Sm ³] (>0.00)	3,00	3,94	4,27	5,69				
	Gas [10 ⁹ Sm ³] (>0.00)					0,15	0,19	0,22	0,30
Recoverable resources	Oil [10 ⁶ Sm ³] (>0.00)	1,26	1,69	1,93	2,68				
	Gas [10 ⁹ Sm ³] (>0.00)					0,06	0,08	0,10	0,14
Reservoir Chrono (from)		Reservoir litho (from)	Nordmela fm	Source Rock, chrono primary	Anisian	Source Rock, litho primary	Steinkobbe fm	Seal, Chrono	Callovian
Reservoir Chrono (to)		Reservoir litho (to)	Stø fm	Source Rock, chrono secondary		Source Rock, litho secondary		Seal, Litho	Fuglen fm
Probability [fraction]									
Technical (oil + gas + oil & gas case) (0.00-1.00)	0,45	Oil case (0.00-1.00)	0,45	Gas case (0.00-1.00)	0,00	Oil & Gas case (0.00-1.00)	0,00		
Reservoir (P1) (0.00-1.00)	1,00	Trap (P2) (0.00-1.00)	0,90	Charge (P3) (0.00-1.00)	0,50	Retention (P4) (0.00-1.00)	1,00		
Parametres:		Low (P90)	Base	High (P10)	Comments:				
Depth to top of prospect [m MSL] (> 0)					Mean values have here been used as the base case for the input parameters. In the petrophysical evaluation of the reservoir parameters for the reference wells, the Thomas Stieber (1975) method was utilised for most of the wells. This method utilises cut-offs for net res fraction and porosity. (Net res fraction is the fraction of the desired facies that is of reservoir quality; net reservoir rock/ net sand). Gross rock volume is the HC-bearing gross volum, that is the GRV calculated down to the HCW contact Retention (P4) after accumulation, is part of the trap risk.				
Area of closure [km ²] (> 0.0)	1,7	2,0	2,4						
Reservoir thickness [m] (> 0)	12,3	16,9	22,3						
HC column in prospect [m] (> 0)									
Gross rock vol. [10 ⁹ m ³] (> 0.000)	0,020	0,028	0,036						
Net / Gross [fraction] (0.00-1.00)	0,85	0,89	0,93						
Porosity [fraction] (0.00-1.00)	0,21	0,22	0,23						
Permeability [mD] (> 0.0)									
Water Saturation [fraction] (0.00-1.00)	0,07	0,10	0,13						
Bg [Rm3/Sm3] (< 1.0000)									
1/Bo [Sm3/Rm3] (< 1.00)	0,86	0,88	0,90						
GOR, free gas [Sm ³ /Sm ³] (> 0)									
GOR, oil [Sm ³ /Sm ³] (> 0)	45	51	58						
Recov. factor, oil main phase [fraction] (0.00-1.00)	0,37	0,45	0,53						
Recov. factor, gas ass. phase [fraction] (0.00-1.00)	0,37	0,45	0,53						
Recov. factor, gas main phase [fraction] (0.00-1.00)									
Recov. factor, liquid ass. phase [fraction] (0.00-1.00)									
For NPD use:									
Temperature, top res [°C] (>0)				Innrapp. av geolog-init:	NPD will insert value	Registrert - init:	NPD will insert value	Kart oppdatert	NPD will insert value
Pressure, top res [bar] (>0)				Dato:	NPD will insert value	Registrert Dato:	NPD will insert value	Kart dato	NPD will insert value
Cut off criteria for N/G calculation	1.	2.	3.					Kart nr	NPD will insert value

5 Technical evaluation

The only development solution that is relevant for prospects in PL1170 is a tie-in to a possible, future Wisting development. Technical-economic evaluation, indicates that the Amundsen Prospect is far too small to meet the minimum economical field size. There are therefore no development solutions as of today.

6 Conclusion

After drilling two Jurassic prospects in the licence only proving gas, there are no longer any belief in finding commercial oil volumes in PL1170. All remaining prospects, except Amundsen, have less than 10% chance of success for oil. In addition, all prospects (including Amundsen) are far below minimum economical field size. [REDACTED]

After testing an intra Snadd channel complex by 7324/6-2 (Ferdinand), there are no longer any remaining Triassic prospects.

The reason for surrender: The prospects have either too high risk or too low resource potential to support a drill decision.