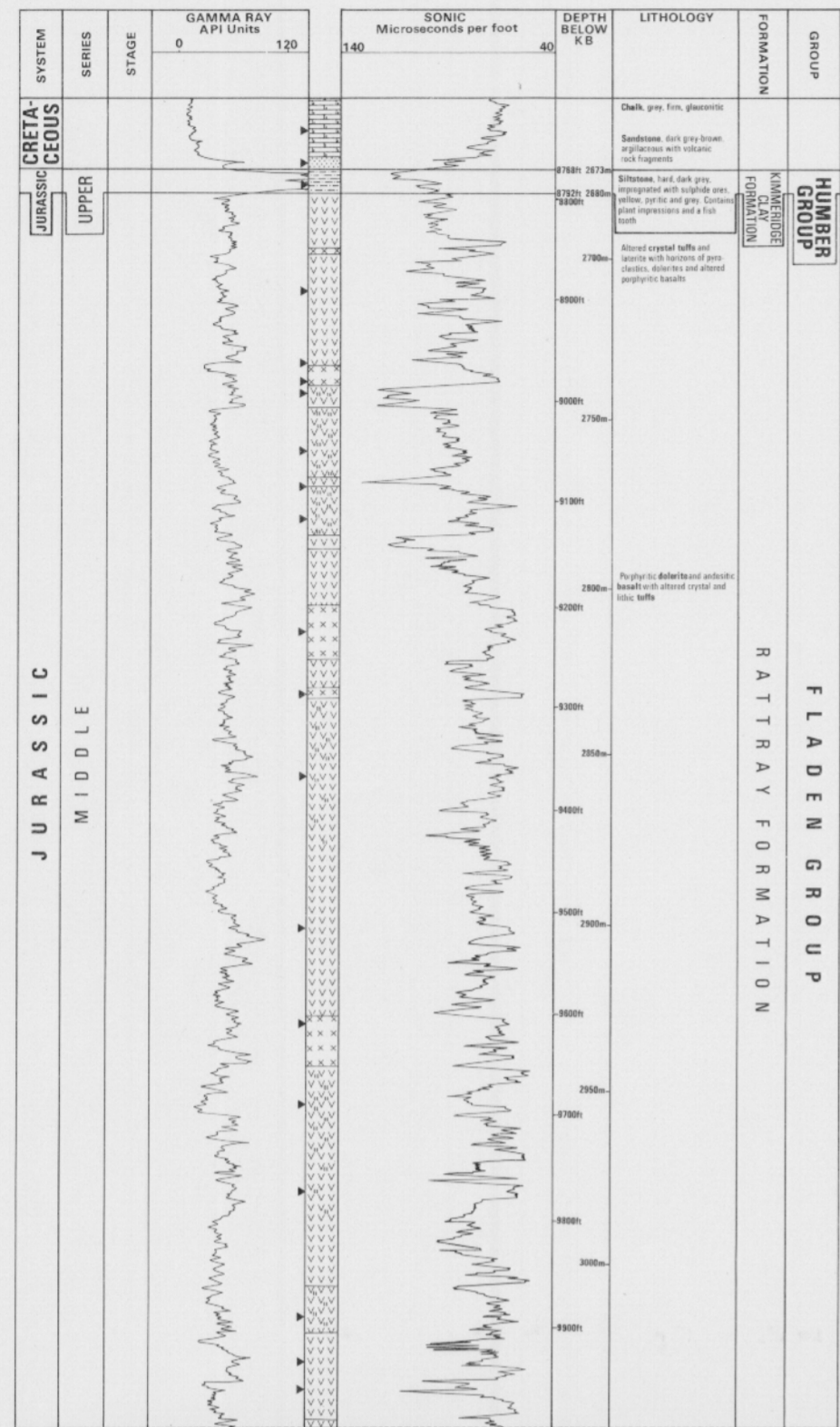


**Figure 23**  
**JURASSIC**  
**UK WELL 21/10-1(FORTIES FIELD)**

OPERATOR: BP  
CO-ORDINATES: 57°43'50.2"N 00°50'29.5"E  
SPUDDED: 11/8/70 DRILLING COMPLETED: 5/10/70  
KBE: 33.8m (111ft) WATER DEPTH: 106.7m (350ft)  
SCALE: 1:2000

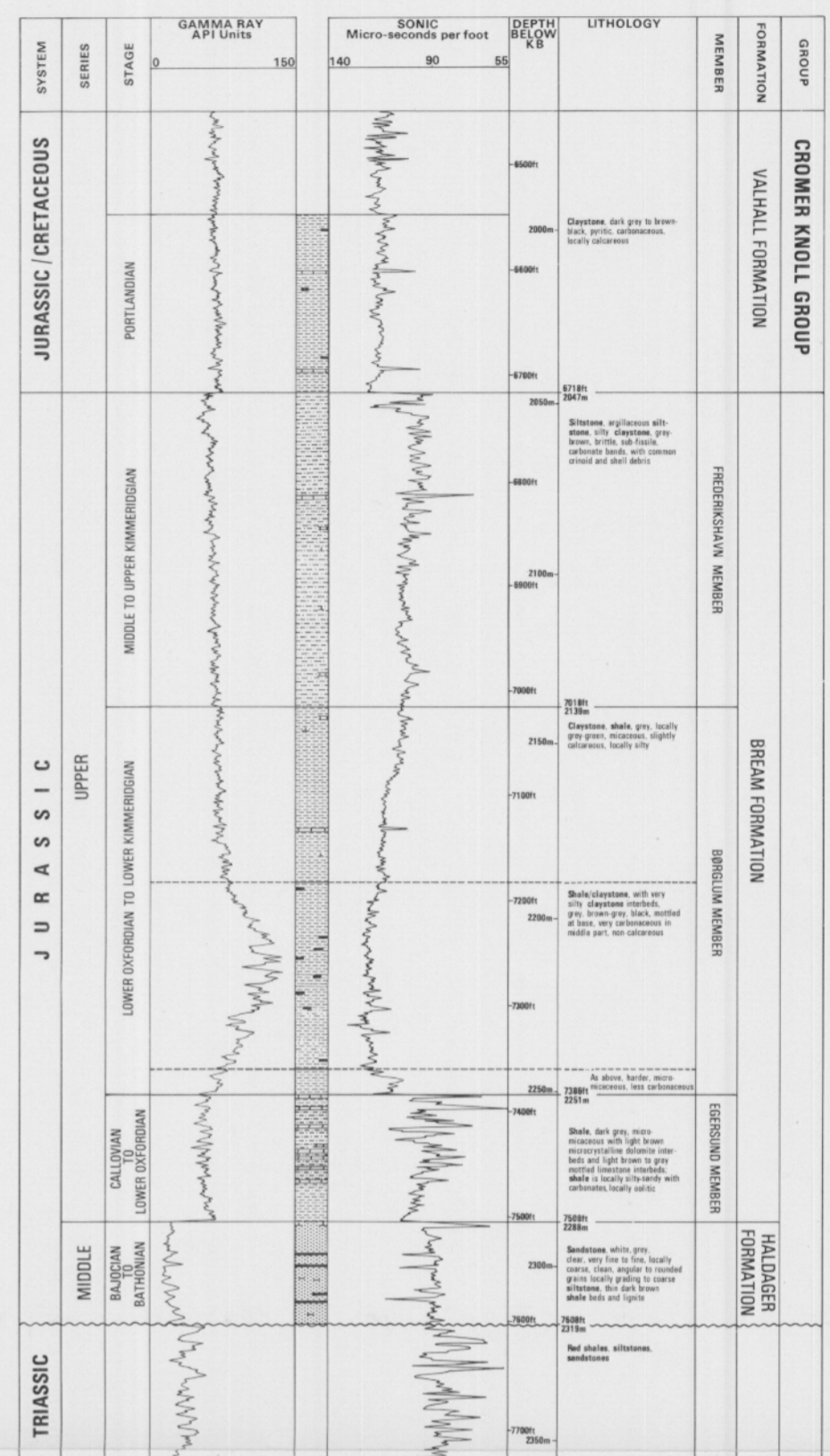
Type Well: RATTRAY FORMATION (FLADEN GROUP)  
Reference Well: KIMMERIDGE CLAY FORMATION (HUMBER GROUP)



**Figure 25**  
**JURASSIC**  
**NORWEGIAN WELL 9/4-1**

OPERATOR: AMOSEAS  
CO-ORDINATES: 57°35'02"N 04°01'13"E  
SPUDDED: 31/3/68 DRILLING COMPLETED: 9/5/68  
KBE: 29m (95ft) WATER DEPTH: 68m (223ft)  
SCALE: 1:2000

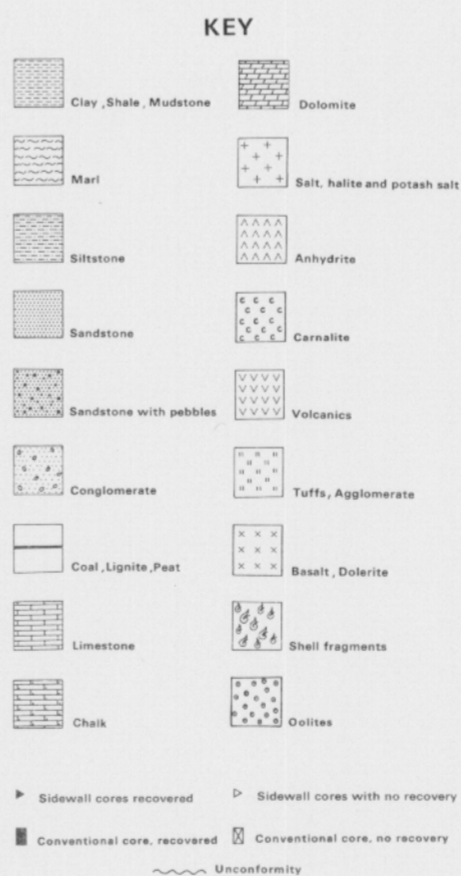
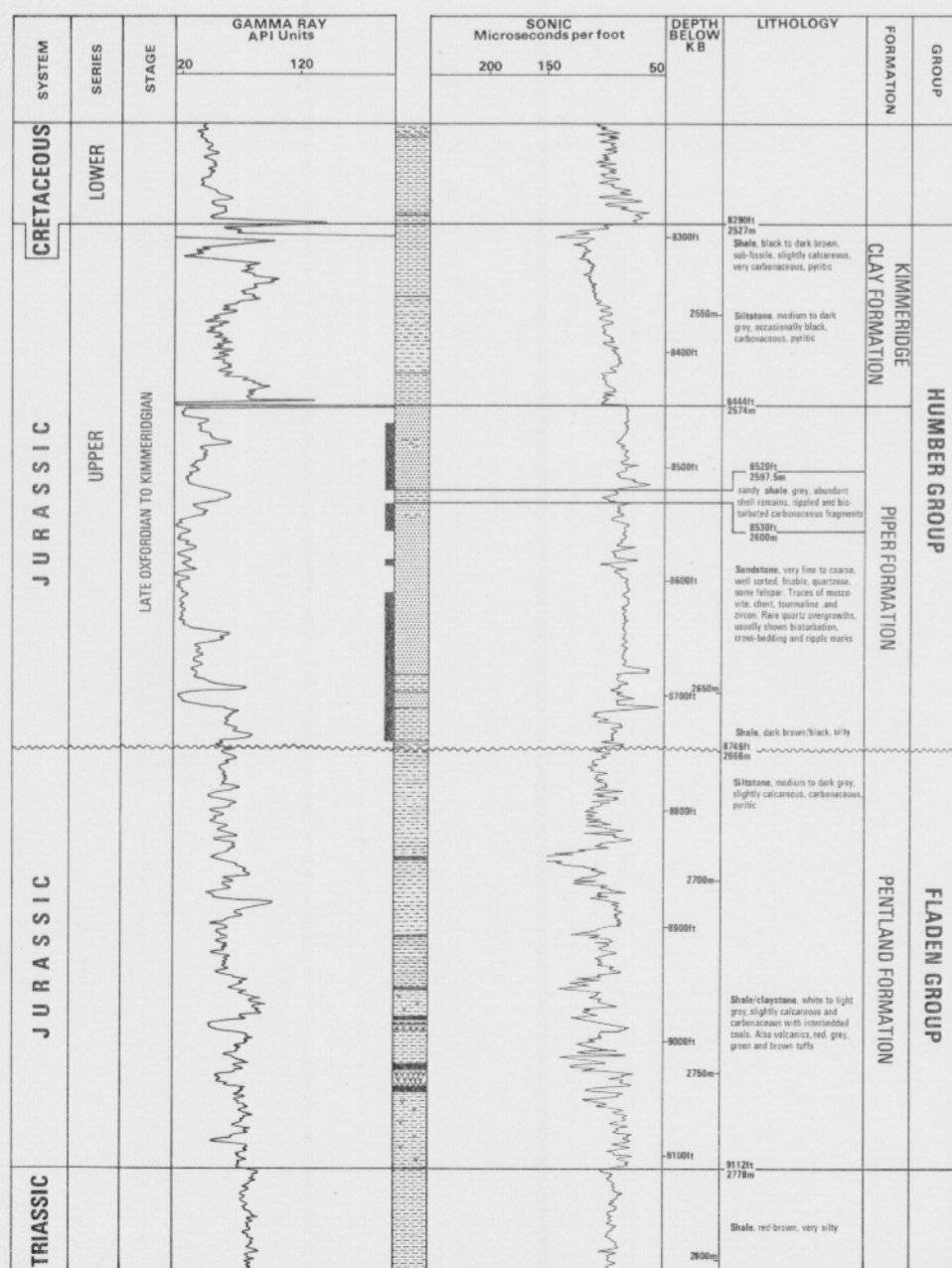
Type Well: BREAM FORMATION  
Reference Well: HALDAGER FORMATION



**Figure 24**  
**JURASSIC**  
**UK WELL 15/17-4 (PIPER FIELD)**

OPERATOR: OCCIDENTAL  
CO-ORDINATES: 58°29'03.7"N 00°17'21.1"E  
SPUDDED: 8/7/73 DRILLING COMPLETED: 9/8/73  
KBE: 24m (78ft) WATER DEPTH: 145m (476ft)  
SCALE: 1:2000

Type Well: PIPER FORMATION (HUMBER GROUP) AND PENTLAND FORMATION (FLADEN GROUP)  
Reference Well: KIMMERIDGE CLAY FORMATION (HUMBER GROUP)



**Figure 26**  
**JURASSIC**  
**NORWEGIAN WELL 7/9-1**

OPERATOR: CONOCO  
CO-ORDINATES: 57°20'37"N 02°51'21"E  
SPUDDED: 22/4/71 DRILLING COMPLETED 19/5/71  
KBE: 31m (101ft) WATER DEPTH: 70m (229ft)  
SCALE: 1:2000

Reference Well: GASSUM FORMATION, FJERRITSLV FORMATION, HALDAGER FORMATION AND BØRGLUM MEMBER (BREAM FORMATION)

