

Well no : 25/01-09 Operator : HYDRO

Coordinates : 59 50 13.34 N UTM coord. : 6633671 N
 02 13 30.24 E 456562 E

Licence no : 129 Permit no : 528

Rig : TREASURE SCOUT Rig type : SEMI-SUB.

Contractor : WILHELMSSEN OFFSHORE SERVICES

Bottom hole temperature : deg.C Elev. KB : 23 M

Spud. date : 86.09.09 Water depth : 112 M

Compl. date : 86.10.11 Total depth : 2807 M

Spud. class : WILDCAT Form. at TD : E.CRET.

Compl. class : P&A. OIL DISCOVERY Prod. form :

Seisloca : NH 8603 - 405 SP. 175

LICENSEES

21.800000 ELF AQUITAINE NORGE A/S
 17.300000 NORSK HYDRO PRODUKSJON A.S
 50.000000 DEN NORSKE STATS OLJESELSKAP A.S
 10.900000 TOTAL NORGE A.S

CASING AND LEAK-OFF TESTS

Type	Casing diam.	Depth below KB	Hole diam.	Hole depth below KB	Lot mud eqv. g/cm3
CONDUCTOR	30	221.0	36	221.0	.
SURF.COND.	20	974.0	26	990.0	1.33
INTERM.	13 3/8	1947.0	17 1/2	1965.0	1.74
OPEN HOLE		2807.0	12 1/4	2807.0	.

CONVENTIONAL CORES

Core no.	Intervals cored meters	Recovery		Series
		M	%	
1	2048.0 - 2049.5	1.1	100.0	
2	2049.5 - 2068.0	18.5	100.0	
3	2068.0 - 2087.2	19.2	100.0	
4	2089.0 - 2107.4	18.4	100.0	
5	2234.0 - 2255.0	21.0	100.0	

MUD PROPERTIES

Depth below KB meter	Mud weight g/cm3	Viscosity	Mud type
170.000	1.03	0.0	WATER
221.000	1.15	0.0	WATER
621.000	1.03	0.0	WATER
990.000	1.15	0.0	WATER
1034.000	1.13	10.0	WATER

1300.000	1.15	14.0	WATER
1715.000	1.16	13.0	WATER
1797.000	1.09	16.0	WATER
1940.000	1.16	12.0	WATER
1965.000	1.20	14.0	WATER
1974.000	1.08	10.0	WATER
2602.000	1.09	18.0	WATER
2807.000	1.08	19.0	WATER

DRILL BIT CUTTINGS AND WET SAMPLES

SAMPLE TYPE	INTERVAL BELOW KB	NUMBER OF SAMPLES
Cutting	990-2807	300
Wet Samples	1000-2807	500

SHALLOW GAS

Interval below KB	REMARKS

AVAILABLE LOGS

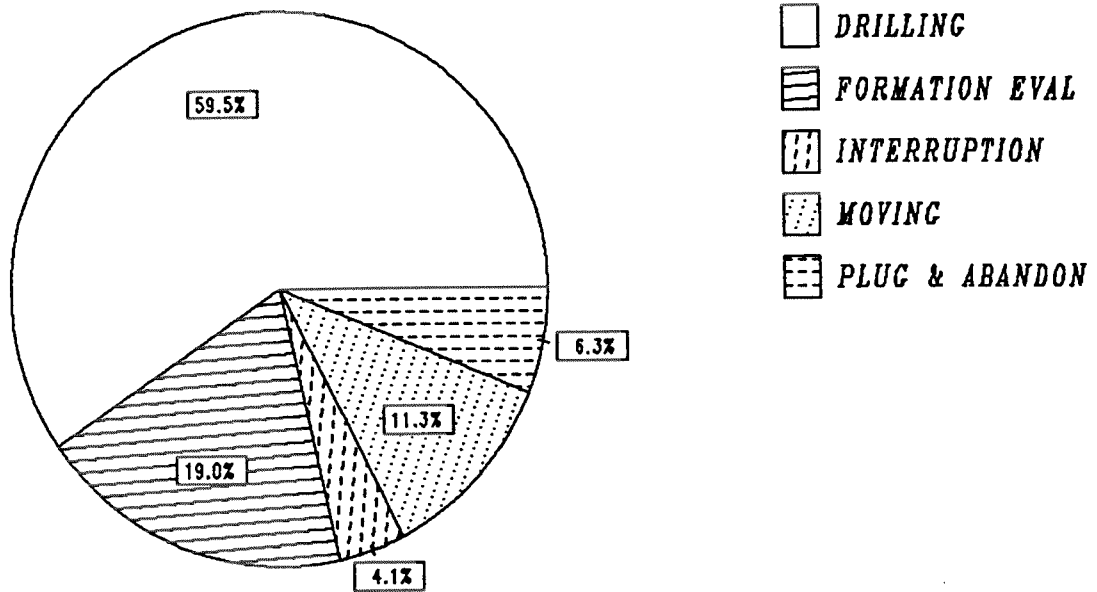
LOG TYPE	INTERVALS	1/200	1/500	Div.
DIL LSS GR CALI	975.000 - 1915.000	X	X	
LSS	975.000 - 1915.000	X	X	
DIL LSS	1947.000 - 2776.000	X	X	
DIL LSS (DOWN LOG)	1947.000 - 2749.000	X	X	
LDL	975.000 - 1915.000	X	X	
LDL GR CNL	1947.000 - 2756.000	X	X	
DLL MSFL	2025.000 - 2300.000	X	X	
SHDT	1947.000 - 2757.000	X		
SHDT DIPMETER	1947.000 - 2757.000	X		
CDM AP/SHDT MSD	1947.000 - 2757.000	X	X	
NGS	2025.000 - 2300.000	X		
RFT STRAIN GAUGE	2052.000 - 2736.000	1:100		
RFT STRAIN GAUGE	2054.000 - 2547.000	1:100		
RFT STRAIN GAUGE	2051.000 - 2056.000	1:100		
HP GAUGE	2052.000 - 2736.000	1:100		
HP GAUGE	2054.000 - 2547.000	1:100		
HP GAUGE	2051.000 - 2056.000	1:100		
CBL VDL	865.000 - 1947.000	X		
WIRELINE DATA PRESSURE	220.000 - 2807.000	1:5000		
DRILLING DATA PRESSURE	220.000 - 2807.000	1:5000		
MUD	135.000 - 2807.000		X	
VELOCITY	150.000 - 4000.000	1:1000X		
VSP, RUN 2A, 500-2780M		1	STK.	
VSP, RIGSSHOT, 10CM/S. PLOT 1,3-8		7	STK.	

VSP, DISPLAY POWER SPECTRUM, PLOT 2
COMP. VSP GEOGRAM, 10&20CM/S, PLOT 9-16
GEOGRAM, SYNTHETIC SEISM. 10&20CM/S

1 STK.
8 STK.
12 STK.

DAILY DRILLING REPORT SYSTEM

Main operations for well : 0025/01 - 09



Total : 888.00 hours

Main operation	Minutes	Hours	% of total
DRILLING	31680	528.00	59.46
FORMATION EVAL	10110	168.50	18.98
INTERRUPTION	2160	36.00	4.05
MOVING	6000	100.00	11.26
PLUG & ABANDON	3330	55.50	6.25

MAIN OPERATIONS FOR WELL : 0025 / 01 - 09

MAIN OPERATION : DRILLING

Sub operations	Minutes	Hrs	% of total
BOP ACTIVITIES	660	11.00	2.08
BOP/WELLHEAD EQ	2250	37.50	7.10
CASING	5040	84.00	15.91
CIRC/COND	840	14.00	2.65
DRILL	11340	189.00	35.80
HOLE OPEN	1830	30.50	5.78
REAM	1950	32.50	6.16
SURVEY	120	2.00	0.38
TRIP	7650	127.50	24.15
Total	31680	528.00	100.00

MAIN OPERATION : FORMATION EVAL

Sub operations	Minutes	Hrs	% of total
CIRC SAMPLES	180	3.00	1.78
CIRC/COND	1140	19.00	11.28
CORE	1530	25.50	15.13
LOG	4950	82.50	48.96
OTHER	30	0.50	0.30
TRIP	2280	38.00	22.55
Total	10110	168.50	100.00

MAIN OPERATION : INTERRUPTION

Sub operations	Minutes	Hrs	% of total
FISH	90	1.50	4.17
MAINTAIN/REP	930	15.50	43.06
OTHER	1140	19.00	52.78
Total	2160	36.00	100.00

MAIN OPERATION : MOVING

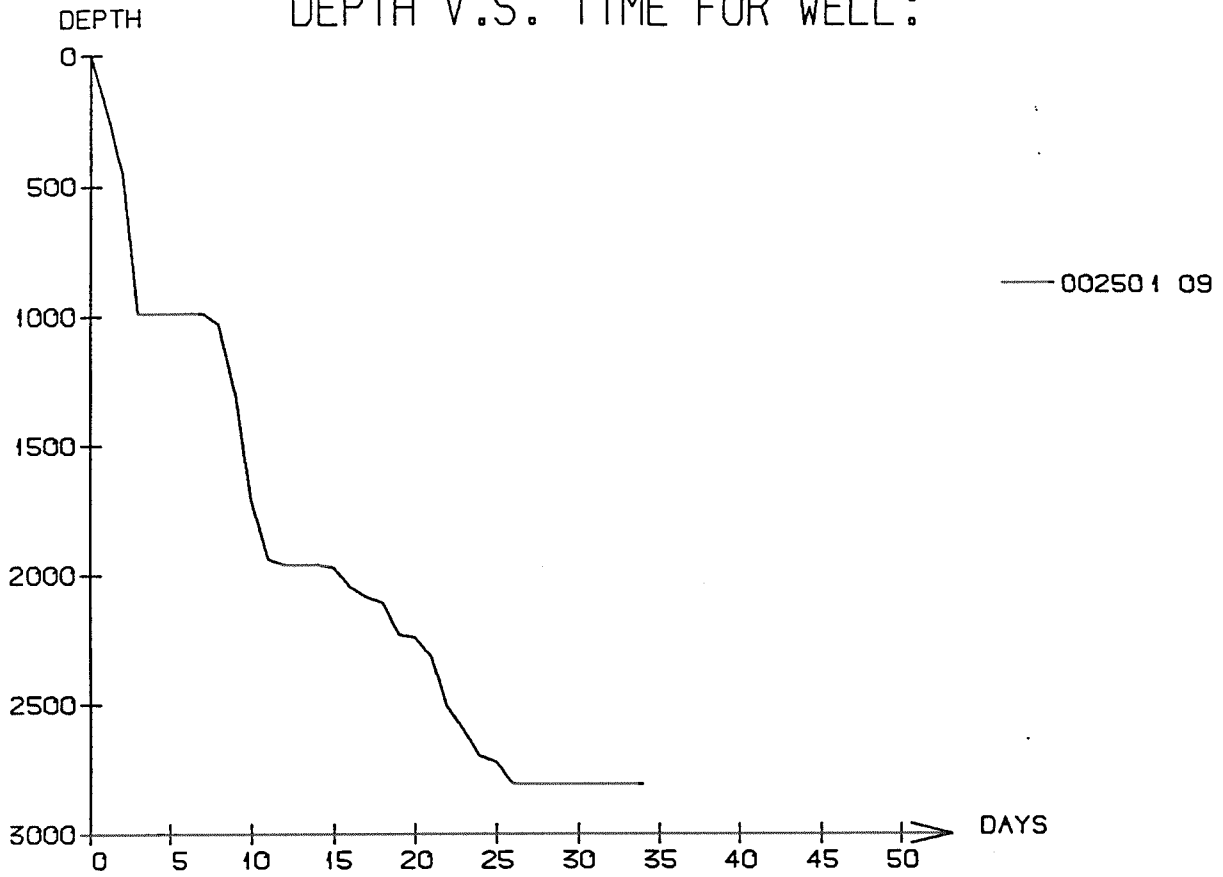
Sub operations	Minutes	Hrs	% of total
ANCHOR	2070	34.50	34.50
TRANSIT	3930	65.50	65.50
Total	6000	100.00	100.00

MAIN OPERATION : PLUG & ABANDON

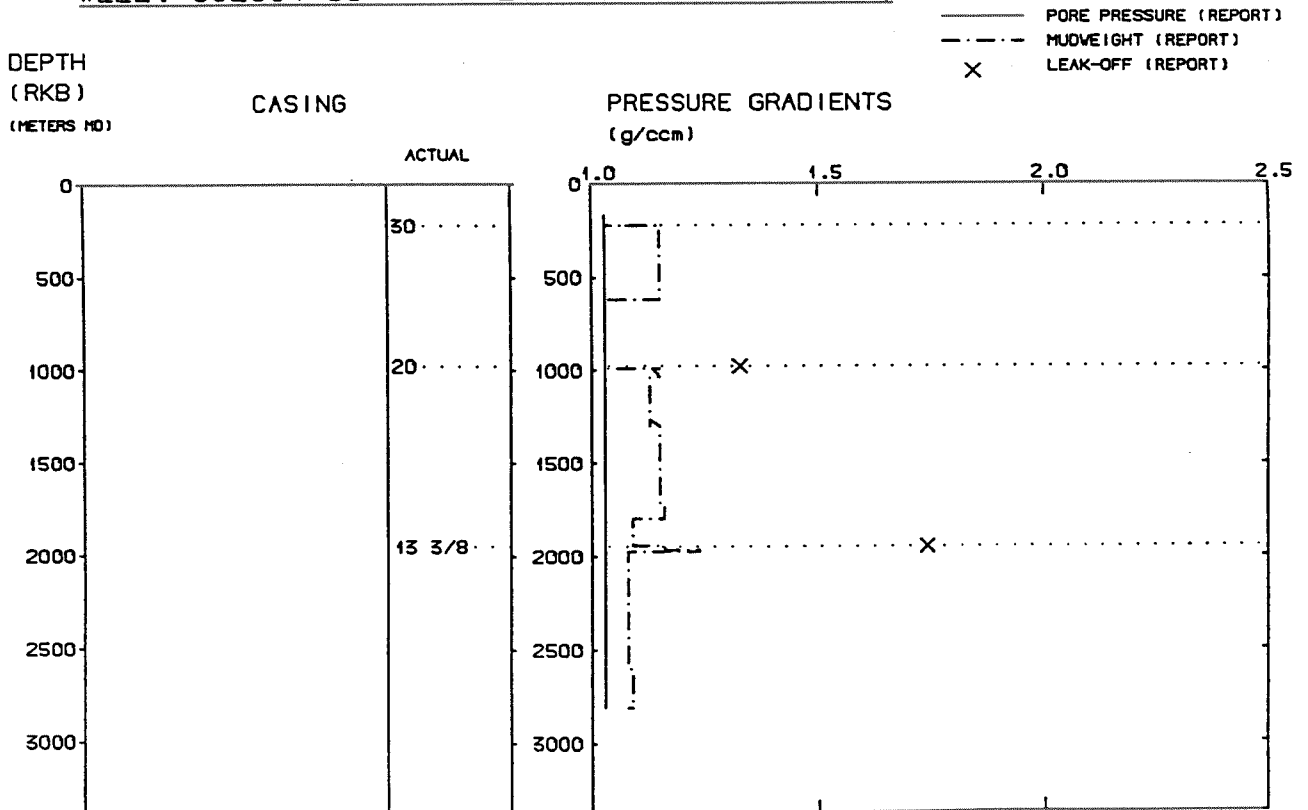
Sub operations	Minutes	Hrs	% of total
CEMENT PLUG	660	11.00	19.82
CIRC/COND	30	0.50	0.90
CUT	150	2.50	4.50
EQUIP RECOVERY	480	8.00	14.41
MECHANICAL PLUG	120	2.00	3.60
PERFORATE	360	6.00	10.81
SQUEEZE	90	1.50	2.70
TRIP	1440	24.00	43.24
Total	3330	55.50	100.00

Total time used 888.00 hrs

DEPTH V.S. TIME FOR WELL :



WELL : 002501 09 PRESSURE COMPOSITE PLOT



Well History 25/1-9

GENERAL:

Well 25/1-9 was drilled nearby the Frigg structure close to the UK boarder, and was designed to prove possible hydrocarbon accumulation in the Frigg Formation and "Cod" sandstone. A main objective was to verify the seismostratigraphic interpretation in block 25/1. In addition, the well was expected to obtain valuable data input to the Frigg Field reservoir simulation study.

The prognosed depth was 2813 m RKB.

OPERATIONS:

Wildcat well 25/1-9 was spudded 9 September 1986 by Wilh. Wilhelmsen rig Treasure Scout and completed 11 October 1986 at a depth of 2807 m in Cretaceous rocks. Drilling proceeded without significant problems.

4 cores were cut in the interval 2048 - 2111 m RKB, and 1 core was cut in the interval 2234 - 2256 m RKB. The Frigg Formation came in at 2035 m as prognosed. The gas/oil contact was defined at 2054 m, and the oil/water contact at 2063 m.

RFT-data indicates that the well contain small reserves.

TESTING:

No DST tests were performed in this well.

GEOLOGICAL TOPS

WELL: 25/1-9

	<i>Depth m (RKB)</i>
<i>Nordland Group</i>	135.0
<i>Utsira Fm.</i>	135.0
<i>Hordaland Group</i>	990.0
<i>Frigg Fm.</i>	2035.0
<i>Rogaland Group</i>	2237.0
<i>Balder Fm.</i>	2237.0
<i>Sele Fm.</i>	2373.0
<i>Hermod Fm.</i>	2402.0
<i>Lista Fm.</i>	2420.0
<i>Heimdal Fm.</i>	2452.0
<i>Våle Fm.</i>	2717.0
<i>Shetland Group</i>	2757.0
<i>T.D.</i>	2807.0