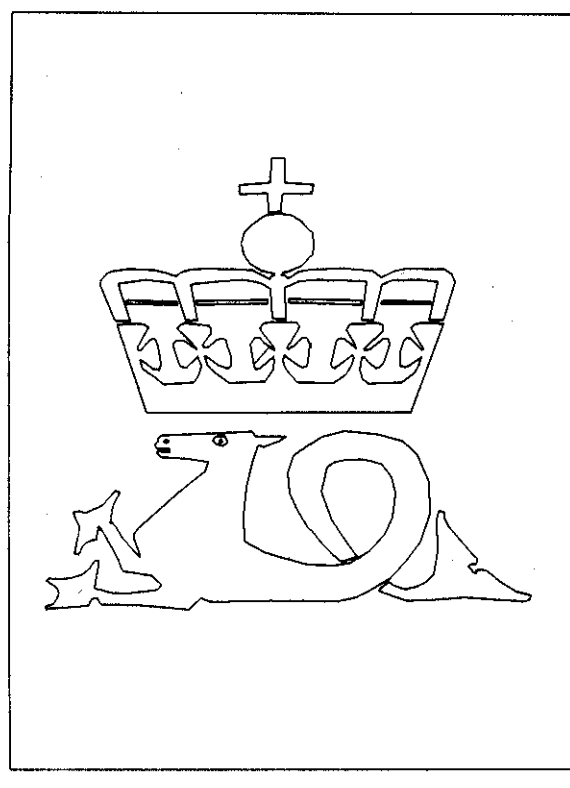


WELL NO: 9/2-1

OPERATOR: STATOIL  
LICENSE NO: 114

TOTAL DEPTH: 3756 M RKB  
KBE: 29 M  
WATER DEPTH: 98 M

COORDINATES: 57°49'58.10"N/04°31'27.92"E  
DATUM: ED50  
SPUD CLASSIF.: WILDCAT  
COMPL. CLASSIF.: P&A. OIL/GAS DISC.

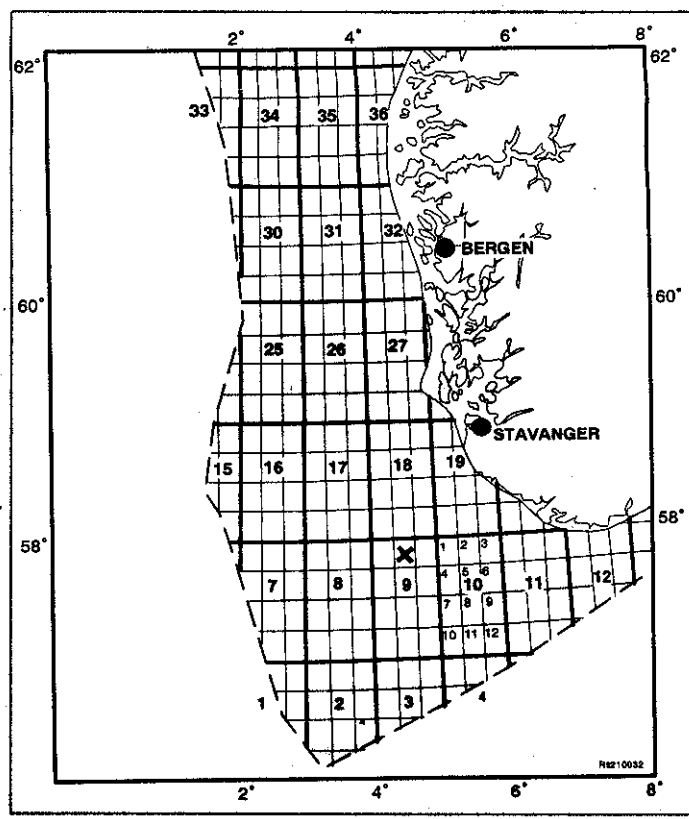


OLJEDIREKTORATET

SPUD DATE: 87.02.21  
COMPL. DATE: 87.04.28  
RIG: DYVI DELTA

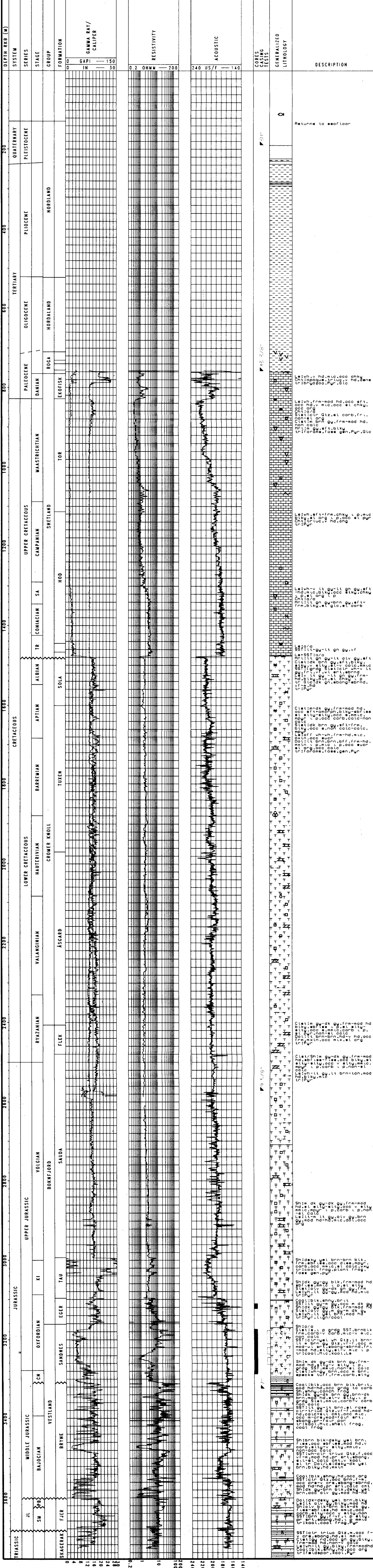
LICENSE GROUP:  
DEMINEX (NORGE) A/S 10.000 %  
NORSK OCCIDENTAL A/S 10.000 %  
SAGA PETROLEUM A.S. 15.000 %  
A/S NORSKE SHELL 15.000 %  
DEN NORSKE STATS OLJESKAP A.S. 50.000 %

LOCATION MAP



COMPLETION LOG

scale 1: 4000



Returns to seafloor

Le:lvh,v hd,mic,occ chky,  
Ch:topaque,lr,lug,v hd,one  
tr:brg,ozoo,pyr,dic

Le:lvh,frm-mod hd,occ sft,  
occ hd,v mic,occ sl chky,  
Ch:lv,gr  
Ch:lv,gr Qtz,sl carb,fr,  
cont:sl org  
Le:lvh,brn,qu,frm-mod hd,  
non calc  
tr:for,one,fose,gen,pyr,Glc

Le:lvh,sl,frm,chk,y v p,muc  
Ch:lv,lr,luc,v hd,org  
tr:pyr

Le:lvh,v lt,qu,lt gn,qu,sl  
hd,mic,blk,occ sft,chk,y  
Ch:lv,gr  
tr:for,one,fose,gen,pyr,Glc

Le:lvh,sl,qu,lt gn,qu,sl  
hd,mic,blk,occ sft,chk,y  
Ch:lv,gr  
tr:for,one,fose,gen,pyr,Glc

Ch:lv,gr  
tr:for,one,fose,gen,pyr,Glc

Ch:lv,gr  
tr:for,one,fose,gen,pyr,Glc

Ch:lv,gr  
tr:for,one,fose,gen,pyr,Glc

Ch:lv,gr  
tr:for,one,fose,gen,pyr,Glc

Ch:lv,gr  
tr:for,one,fose,gen,pyr,Glc

Ch:lv,gr  
tr:for,one,fose,gen,pyr,Glc

Ch:lv,gr  
tr:for,one,fose,gen,pyr,Glc

Ch:lv,gr  
tr:for,one,fose,gen,pyr,Glc

Ch:lv,gr  
tr:for,one,fose,gen,pyr,Glc

Ch:lv,gr  
tr:for,one,fose,gen,pyr,Glc

Ch:lv,gr  
tr:for,one,fose,gen,pyr,Glc