

Well no : 6508/05-01

Operator : SHELL

Coordinates : 65 42 51.22 N  
08 28 35.37 EUTM coord. : 7288341 N  
475973 E

Licence no : 125

Permit no : 542

Rig : WEST VANGUARD

Rig type : SEMI-SUB.

Contractor : A/S SMEDVIG DRILLING CO.

Bottom hole temperature : deg.C

Elev. KB : 25 M

Spud. date : 87.04.22

Water depth : 409 M

Compl. date : 87.05.24

Total depth : 2589 M

Spud. class : WILDCAT

Form. at TD : TRIASSIC

Compl. class : P&amp;A. DRY HOLE

Prod. form :

Seisloca : 86 - 122 SP. 595

## LICENSEES

-----  
 15.000000 NORSK OCCIDENTAL A/S  
 35.000000 A/S NORSKE SHELL  
 50.000000 DEN NORSKE STATS OLJESELSKAP A.S

## CASING AND LEAK-OFF TESTS

Type	Casing diam.	Depth below KB	Hole diam.	Hole depth below KB	Lot mud eqv. g/cm <sup>3</sup>
CONDUCTOR	30	519.0	36	677.0	.
SURF.COND.	20	960.0	26	975.0	1.50
INTERM.	13 3/8	1589.0	17 1/2	1603.0	1.62

## CONVENTIONAL CORES

Core no.	Intervals cored meters	Recovery M	%	Series
1	1786.0 - 1798.2	12.2	100.0	

## MUD PROPERTIES

Depth below KB meter	Mud weight g/cm <sup>3</sup>	Viscosity	Mud type
457.000	1.03	0.0	WATER BASED
1855.000	1.28	17.0	WATER BASED

## DRILL BIT CUTTINGS AND WET SAMPLES

SAMPLE TYPE	INTERVAL BELOW KB	NUMBER OF SAMPLES
Cutting		
Wet Samples	960-2586	360

# SHALLOW GAS

Interval                      REMARKS  
below KB

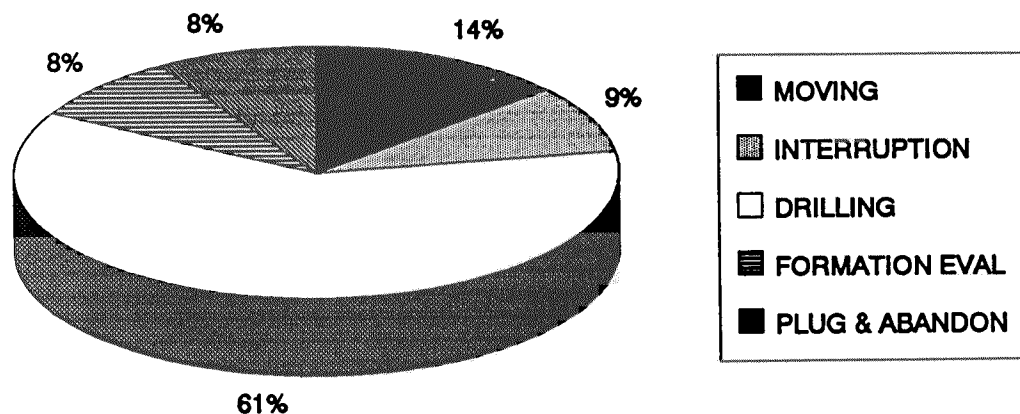
---

## AVAILABLE LOGS

LOG TYPE	INTERVALS	1/200	1/500	Div.
ISF LSS GR	519.000 - 971.800	X		
ISF LSS GR	961.000 - 1602.800	X		
ISF GR LSS MSFL	1590.000 - 2580.000	X		
LDL CNL GR	519.000 - 975.000	X		
LDL CNL GR	961.000 - 1604.600	X		
LDL CNL NGL	1590.000 - 2580.500	X		
SHDT GR	1590.000 - 2581.000	X		
CDM AP/SHDT MSD	1590.000 - 2580.000	X		
RFT GR	1786.000 - 2542.000			
CBL VDL GR	700.000 - 1585.000	X		
VELOCITY	519.000 - 2580.000	1:1000		X
(Frequency test, 10cm/s.				4 stk.)

# DAILY DRILLING REPORT SYSTEM

MAIN OPERATIONS FOR WELL: 6508/05-01



Main operation	Minutes	Hrs	% of total
MOVING	8070	134,5	14,01
INTERRUPTION	4995	83,3	8,67
DRILLING	34830	580,5	60,47
FORMATION EVAL	4860	81,0	8,44
PLUG & ABANDON	4845	80,8	8,41
<i>Total</i>	57600	960,0	100,00

## SUB OPERATION FOR WELL: 6508/05-01

### MAIN OPERATION: MOVING

Sub operation	Minutes	Hrs	% of total
TRANSIT	5490	91,5	68,03
ANCHOR	2580	43,0	31,97
<i>Total</i>	8070	134,5	100,00

### MAIN OPERATION: INTERRUPTION

Sub operation	Minutes	Hrs	% of total
WAIT	945	15,8	18,92
MAINTAIN/REP	3330	55,5	66,67
OTHER	720	12,0	14,41
<i>Total</i>	4995	83,3	100,00

### MAIN OPERATION: DRILLING

Sub operation	Minutes	Hrs	% of total
BOP/WELLHEAD EQ	4078	68,0	11,71
TRIP	7518	125,3	21,58
DRILL	12480	208,0	35,83
CIRC/COND	2639	44,0	7,58
SURVEY	240	4,0	0,69
CASING	5370	89,5	15,42
OTHER	480	8,0	1,38
HOLE OPEN	1710	28,5	4,91
REAM	315	5,3	0,90
<i>Total</i>	34830	580,5	100,00

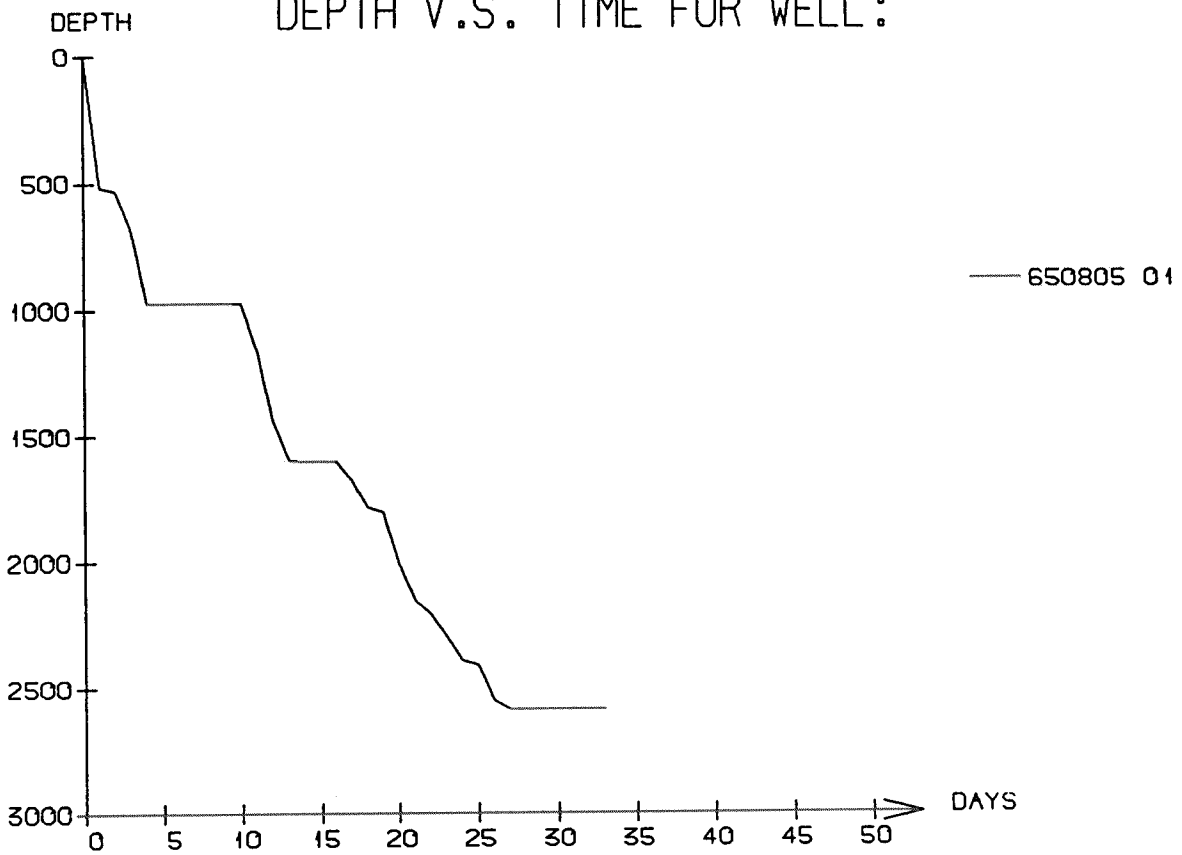
### MAIN OPERATION: FORMATION EVAL

Sub operation	Minutes	Hrs	% of total
LOG	3600	60,0	74,07
CIRC SAMPLES	90	1,5	1,85
CORE	1170	19,5	24,07
<i>Total</i>	4860	81,0	100,00

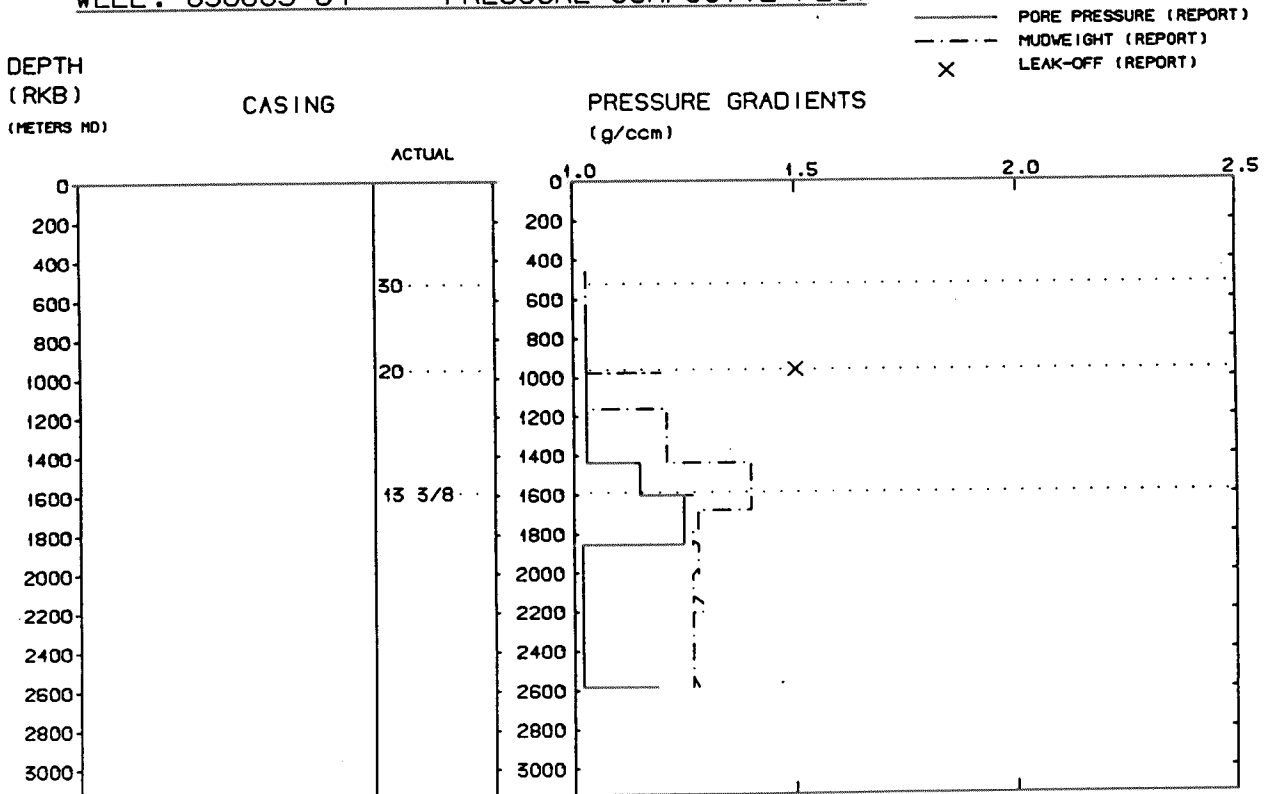
### MAIN OPERATION: PLUG & ABANDON

Sub operation	Minutes	Hrs	% of total
TRIP	2010	33,5	41,49
CIRC/COND	150	2,5	3,10
CEMENT PLUG	825	13,8	17,03
PERFORATE	135	2,3	2,79
EQUIP RECOVERY	1560	26,0	32,20
OTHER	165	2,8	3,41
<i>Total</i>	4845	80,8	100,00

# DEPTH V.S. TIME FOR WELL:



## WELL: 650805 01 PRESSURE COMPOSITE PLOT



# Well History 6508/5-1

## GENERAL:

Well 6508/5-1 was drilled on a structure located in the western part of the Helgeland Basin which forms the northern part of the relatively undeformed Trøndelag Platform. The platform is bounded to the east by the Norwegian mainland and to the west by the Trøndelag Platform fault zone where the Jurassic and older series are progressively downfaulted on to the Halten Terrace. The structurally higher Nordland Ridge and Trønabanken area bound to the Helgeland Basin to the north and northwest. Two earlier wells drilled in the Trønabanken area indicated small amounts of oil.

The main objective was the sandstone of the Early Jurassic Garn Formation. The Tilje Fm. was a secondary objective in the case of a shaled out Garn and Not Fm. acting as a seal.

## OPERATIONS:

Wildcat well 6508/5-1 was spudded 22 April 1987 by Smedvig semi-submersible rig West Vanguard and completed 24 May 1987 at a depth of 2589 m in Triassic rocks. The hole was drilled without any significant problems and without any signs of shallow gas.

The top prospect was encountered at 1778 m and one core was cut in the interval 1786 - 1804 m. The water-bearing reservoir was of high quality with good permeability and high porosity, but unfortunately there were no signs of hydrocarbons. The results of this hole is not encouraging in regards to the exploration activity related to the Helgelandsbasseng.

The well was plugged and abandoned as a dry hole.

## TESTING:

No DST tests were performed in this well.

# GEOLOGICAL TOPS

WELL: 6508/5-1

	<i>Depth m (RKB)</i>
<i>Nordland Group</i>	431.0
<i>Hordaland Group</i>	1163.0
<i>Brygge Fm.</i>	1163.0
<i>Rogaland Group</i>	1427.0
<i>Tare Fm.</i>	1427.0
<i>Tang Fm.</i>	1476.0
<i>Cromer Knoll Group</i>	1527.0
<i>Lange Fm.</i>	1527.0
<i>Lyr Fm.</i>	1562.0
<i>Viking Group</i>	1580.0
<i>Spekk Fm.</i>	1580.0
<i>Melke Fm.</i>	1650.0
<i>Fangst Group</i>	1710.0
<i>Garn Fm.</i>	1710.0
<i>Not Fm.</i>	1778.0
<i>Båt Group</i>	1824.0
<i>Tilje Fm.</i>	1824.0
<i>Åre Fm.</i>	1981.0
<i>Triassic Group</i>	2229.0
<i>Red Beds</i>	2229.0
<i>TD.</i>	2589.0