

Well no : 26/04-01

Operator : BP

Coordinates : 59 36 37.84 N UTM coord. : 6608189 N
03 01 13.26 E 501148 E

Licence no : 118 Permit no : 545

Rig : TREASURE SCOUT Rig type : SEMI-SUB.

Contractor : WILHELMSSEN OFFSHORE SERVICES

Bottom hole temperature : deg.C Elev. KB : 23 M

Spud. date : 87.05.08 Water depth : 119 M

Compl. date : 87.07.17 Total depth : 3690 M

Spud. class : WILDCAT Form. at TD : TRIASSIC

Compl. class : P&A. DRY HOLE Prod. form :

Seisloca : NOD 2 - 84 - 08 SP. 1838

LICENSEES

25.000000 BP PETROLEUM DEV. OF NORWAY A.S
50.000000 DEN NORSKE STATS OLJESELSKAP A.S
25.000000 TOTAL NORGE A.S

CASING AND LEAK-OFF TESTS

Type	Casing diam.	Depth below KB	Hole diam.	Hole depth below KB	Lot mud eqv. g/cm3
SURF.COND.	20	711.0	26	873.0	.
INTERM.	13 3/8	1675.0	17 1/2	1680.0	.
INTERM.	8 3/8	2667.0		2681.0	.

CONVENTIONAL CORES

Core no.	Intervals cored meters	Recovery M	%
1	2253-2265.7	12.7	100.0
2	2270-2297.7	17.7	100.0
3	2754-2781.7	27.7	100.0
4	3308-3316.9	8.9	100.0

MUD PROPERTIES

Depth below KB meter	Mud weight g/cm3	Viscosity	Mud type
190.000	1.22	0.0	WATER BASED
1532.000	1.35	53.0	WATER BASED
1602.000	1.45	58.0	WATER BASED
1640.000	1.51	55.0	WATER BASED
1722.000	1.62	41.0	WATER BASED
1951.000	1.68	57.0	WATER BASED
2048.000	1.07	50.0	WATER BASED
2058.000	1.66	44.0	WATER BASED
2077.000	1.63	0.0	WATER BASED

2082.000	1.92	0.0	WATER BASED
2108.000	1.60	4.0	WATER BASED
2177.000	1.92	0.0	WATER BASED
2238.000	1.58	4.0	WATER BASED
2253.000	1.35	0.0	WATER BASED
2527.000	1.30	0.0	WATER BASED
2563.000	1.21	0.0	WATER BASED
2680.000	1.30	41.0	WATER BASED
2680.000	1.33	40.0	WATER BASED
3270.000	1.20	37.0	WATER BASED
3308.000	1.88	0.0	WATER BASED
3542.000	1.15	0.0	WATER BASED
3690.000	1.17	0.0	WATER BASED
3690.000	1.20	0.0	WATER BASED
3690.000	1.17	0.0	WATER BASED
3690.000	1.20	0.0	WATER BASED
3690.000	1.21	0.0	WATER BASED

DRILL BIT CUTTINGS AND WET SAMPLES

SAMPLE TYPE	INTERVAL BELOW KB	NUMBER OF SAMPLES
Cutting	730-3690	700
Wet Samples	730-3589	380

SHALLOW GAS

Interval below KB	REMARKS

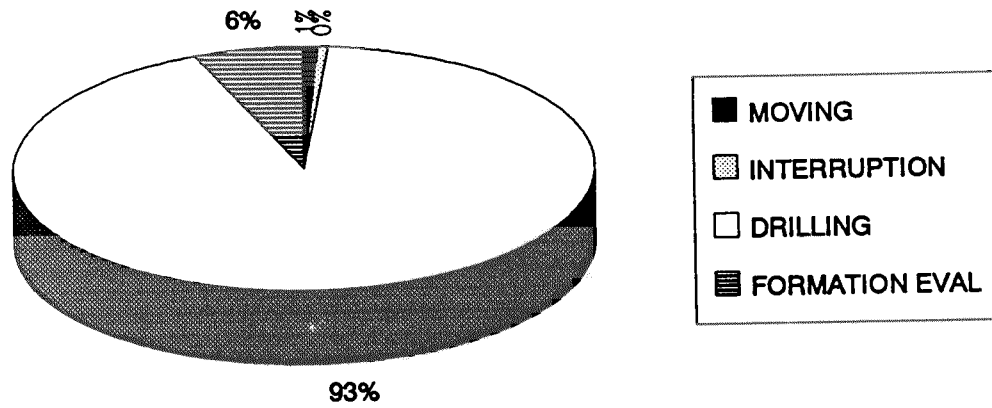
AVAILABLE LOGS

LOG TYPE	INTERVALS	1/200	1/500	Div.
DIS LSS GR SP	711.500 - 1680.000	X	X	
DIS BHC GR	1675.000 - 2665.000	X	X	
DIS BHC	2668.000 - 3683.000	X	X	
LDL CNL GR	711.000 - 1680.000	X	X	
LDL CNL GR	1925.000 - 2663.000	X	X	
LDL CNL GR	2668.000 - 3679.000	X	X	
CDM AP/SHDT MSD	1975.000 - 2664.000	X	X	
CDM AP/SHDT MSD	2670.000 - 3679.000	X	X	
SHDT FS & SL CHA.	1675.000 - 2663.000	X	(2 STK)	
SHDT FS & SL CHA.	2668.000 - 3679.000	X	(2 STK)	
RFT GR	1683.000 - 2249.000			
RFT GR HP GAUGE	1714.000 - 2406.000			
RFT GR STRAIN GAUGE	1714.000 - 2406.000			
RFT GR (SG)	2766.000 - 3571.000			
MUD	740.000 - 3690.000			X
VELOCITY LOG	712.000 - 3683.000	1:1000	X	

(Velocity, air gun calibrated log data.	1 stk.)
(Velocity, display of survey records, 1 & 2	2 stk.)
(VSP, interpreters composite, 10 cm/s	3 stk.)
(Synthetic seismogram, marine, 10 cm/s	5 stk.)
(Two-way travel time, 10cm/s	1 stk.)

DAILY DRILLING REPORT SYSTEM

MAIN OPERATIONS FOR WELL: 26/04-01



Main operation	Minutes	Hrs	% of total
MOVING	1020	17,0	1,00
INTERRUPTION	495	8,3	0,48
DRILLING	94545	1575,8	92,47
FORMATION EVAL	6180	103,0	6,04
<i>Total</i>	102240	1704,0	100,00

SUB OPERATIONS FOR WELL: 26/04-01

MAIN OPERATION: MOVING

Sub operation	Minutes	Hrs	% of total
TRANSIT	135	2,3	13,24
ANCHOR	885	14,8	86,76
<i>Total</i>	1020	17,0	100,00

MAIN OPERATION: INTERRUPTION

Sub operation	Minutes	Hrs	% of total
MAINTAIN/REP	285	4,8	57,58
FISH	210	3,5	42,42
<i>Total</i>	495	8,3	100,00

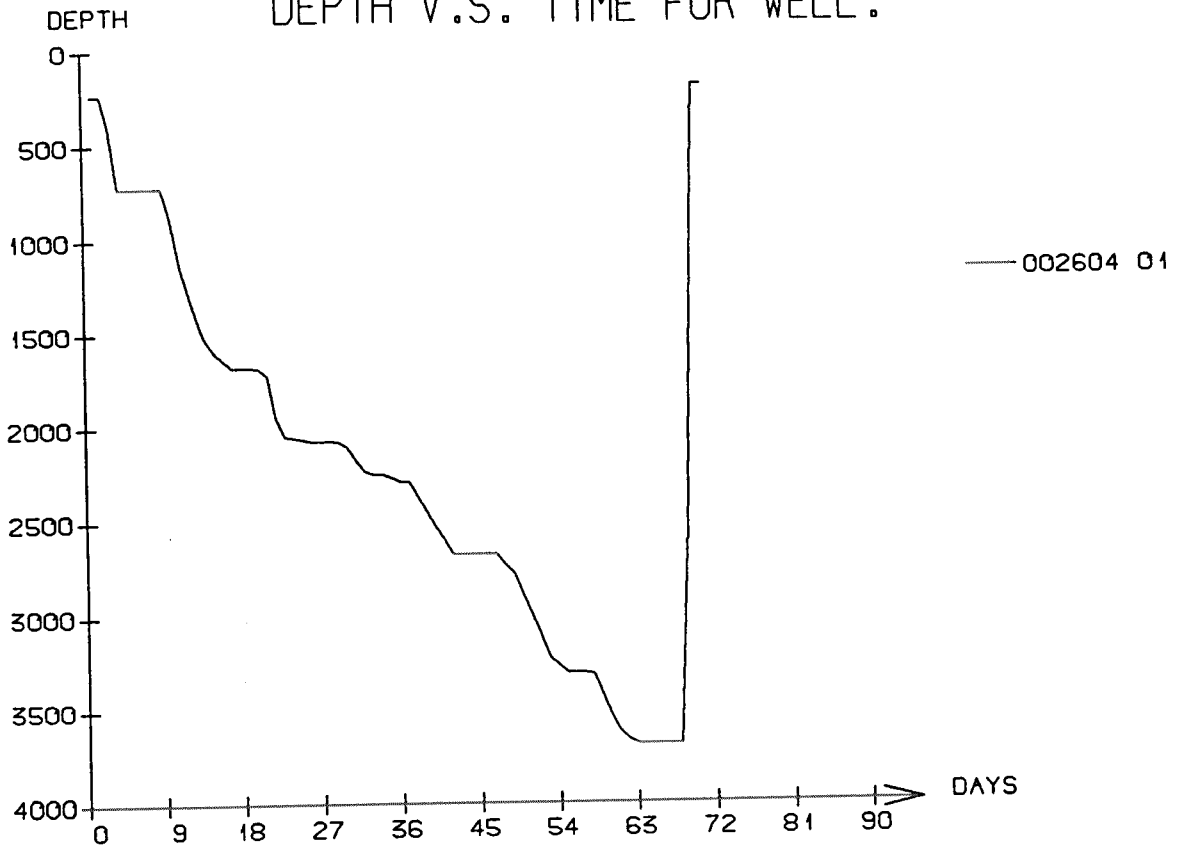
MAIN OPERATION: DRILLING

Sub operation	Minutes	Hrs	% of total
DRILL	37920	632,0	40,11
CASING	2355	39,3	2,49
TRIP	42735	712,3	45,20
SURVEY	2745	45,8	2,90
CIRC/COND	2250	37,5	2,38
BOP/WELLHEAD EQ	2880	48,0	3,05
REAM	1665	27,8	1,76
OTHER	1995	33,3	2,11
<i>Total</i>	94545	1575,8	100,00

MAIN OPERATION: FORMATION EVAL

Sub operation	Minutes	Hrs	% of total
LOG	5220	87,0	84,47
CORE	960	16,0	15,53
<i>Total</i>	6180	103,0	100,00

DEPTH V.S. TIME FOR WELL :



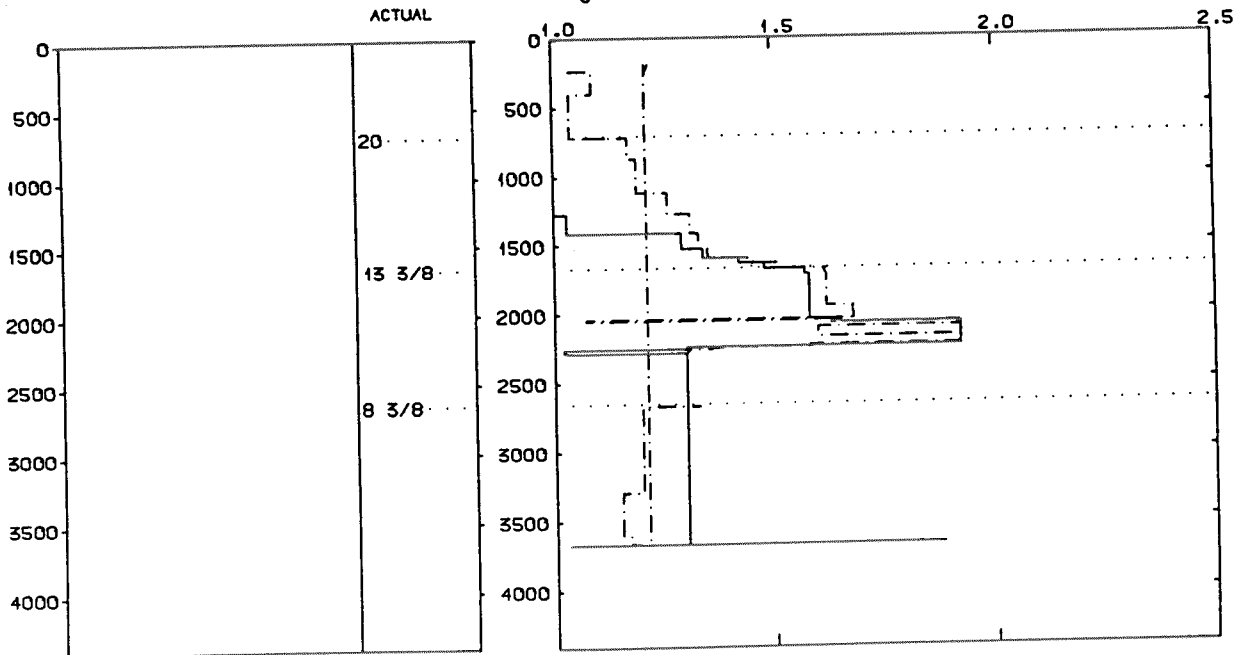
WELL : 002604 01 PRESSURE COMPOSITE PLOT

— PORE PRESSURE (REPORT)
 - - - MUDWEIGHT (REPORT)

DEPTH
 (RKB)
 (METERS TVD)

CASING

PRESSURE GRADIENTS
 (g/ccm)



Well History 26/4-1.

GENERAL:

Well 26/4-1 was the first well drilled in the Stord Basin. The well was designed to test a Paleocene mound, and sandstones of Jurassic age within a footwall closure. The sandstone was prognosed to come in at 2268 m.

Another primary objective was to gain information on reservoir quality and hydrocarbon source. A secondary target was the Sleipner (Ness Fm) Formation that was prognosed to come in at 2783 m. Prognosed TD was 3500 m msl.

OPERATIONS:

Wildcat well 26/4-1 was spudded 08 May 1987 by Wilh. Wilhelmsen semi-submersible rig Treasure Scout, and completed 17 July 1987 at a depth of 3690 m RKB in rocks of Triassic age. Drilling proceeded without significant problems, except for several occurrences of lost circulation due to increasing formation pressure in Tertiary rocks.

Pressure measurements taken 7 m into the mounds, displayed normal pressure conditions, and the sandstone proved to be waterbearing.

Coring commenced at 2253 m RKB and ended at 2293,5 m RKB, with an additional spot core on top of the Statfjord Formation. Altogether 4 cores were cut.

The Jurassic Sleipner sandstone (Ness Fm) came in at 2806 m RKB. Topp Statfjord Formation came in at 3307 m RKB and displayed weak shows, but is considered being dry. The well was plugged and abandoned at a TD of 3690 m RKB (DD) as dry hole in Triassic rocks.

TESTING:

No DST-tests were run in this well.

GEOLOGICAL TOPS

WELL: 26/4-1

	Depth m (RKB)
<i>Nordland Group</i>	144,0
<i>Utsira Fm</i>	905,0
<i>Hordaland Group</i>	1094,0
<i>Grid Fm</i>	1682,0
<i>Undefined.</i>	1733,0
<i>Rogaland Group</i>	2050,0
<i>Balder Fm</i>	2050,0
<i>Sele Fm</i>	2106,0
<i>Lista Fm</i>	2142,0
<i>Heimdal Fm</i>	2246,0
<i>Lista Fm</i>	2261,0
<i>Heimdalø Fm</i>	2266,0
<i>Shetland Group</i>	2322,0
<i>Cromer Knoll Group</i>	2584,0
<i>Viking Group</i>	2637,0
<i>Draupne Fm</i>	2637,0
<i>Heather Fm</i>	2725,0
<i>Brent Group</i>	2753,0
<i>Tarbert Fm</i>	2753,0
<i>Ness Fm</i>	2806,0
<i>Broom Fm</i>	2860,5
<i>Dunlin Group</i>	2872,0
<i>Drake Fm</i>	2872,0
<i>Cook Fm</i>	3094,5
<i>Burton Fm</i>	3118,0
<i>Amundsen Fm</i>	3124,0
 <i>Statfjord Fm</i>	 3308,0
<i>Hegre Group</i>	3665,0
<i>TD.</i>	3692,0