

Well no : 6407/09-07

Operator : SHELL

Coordinates : 64 29 48.05 N  
07 51 44.90 E

UTM coord. : 7153029 N  
445350 E

Licence no : 93

Permit no : 577

Rig : TREASURE SCOUT

Rig type : SEMI-SUB.

Contractor : WILHELMSSEN OFFSHORE SERVICES

Bottom hole temperature : 68 deg.C

Elev. KB : 23 M

Spud. date : 88.04.26

Water depth : 242 M

Compl. date : 88.05.25

Total depth : 2561 M

Spud. class : WILDCAT

Form. at TD : TRIASSIC

Compl. class : P&A. DRY HOLE

Prod. form :

Seisloca : ST 8607 - 409 SP. 119,1

## LICENSEES

-----

20.000000 BP PETROLEUM DEV. OF NORWAY A.S  
 30.000000 A/S NORSKE SHELL  
 50.000000 DEN NORSKE STATS OLJESELSKAP A.S

## CASING AND LEAK-OFF TESTS

Type	Casing diam.	Depth below KB	Hole diam.	Hole depth below KB	Lot mud eqv. g/cm3
CONDUCTOR	30	339.0	36	348.0	.
SURF.COND.	20	799.0	26	810.0	1.42
INTERM.	9 5/8	1698.0	12 1/4	1708.0	1.50
OPEN HOLE		2561.0	8 1/2	2561.0	.

## MUD PROPERTIES

Depth below KB meter	Mud weigth g/cm3	Viscosity	Mud type
348.000	1.03	1200.0	WATER BASED
388.000	1.02	0.0	WATER BASED
461.000	1.04	0.0	WATER BASED
463.000	1.02	0.0	WATER BASED
525.000	1.04	0.0	WATER BASED
569.000	1.03	1200.0	WATER BASED
800.000	1.04	1200.0	WATER BASED
800.000	1.03	1200.0	WATER BASED
810.000	1.04	1200.0	WATER BASED
1139.000	1.30	0.0	WATER BASED
1679.000	1.31	26.0	WATER BASED
1708.000	1.32	23.0	WATER BASED
2561.000	1.20	15.0	WATER BASED

# DRILL BIT CUTTINGS AND WET SAMPLES

SAMPLE TYPE	INTERVAL BELOW KB	NUMBER OF SAMPLES
Cutting	820-2559	210
Wet Samples	820-2559	300

## SHALLOW GAS

Interval below KB	REMARKS

## AVAILABLE LOGS

LOG TYPE	INTERVALS	1/200	1/500	Div.
ISF LSS GR SP	340.000 - 809.000	X	X	
ISF LSS GR SP	800.000 - 1678.000	X	X	
ISF LSS GR SP	1701.000 - 2558.000	X	X	
LDL CNL GR CAL	340.000 - 809.000	X	X	
LDT CNL NGT CAL	1700.000 - 2559.000	X	X	
MWD	354.000 - 2561.000		X	
SHDT GR	1701.000 - 2560.000	X		
CDM AP	1701.000 - 2559.000	X		
NGS RATIOS	1701.000 - 2559.000	X	X	
NGS ENVIRONMENTAL COR	1688.000 - 2552.000	X	X	
RFT GR	1724.000 - 2470.000			
CBL VDL GR	650.000 - 1702.000	X		
DRILL DATA PRESS. LOG	265.000 - 2561.000	1:5000		
PRESS. EVAL LOG.	265.000 - 2561.000	1:5000		
TEMPERATURE DATA	265.000 - 2561.000	1:5000		
MUD	799.000 - 2561.000		X	
VELOCITY	360.000 - 2560.000		X	

(Synthetic seismogram, Geogram, 10cm/s                    2 stk.)  
 (Frequency Test 10cm/s    4 stk.)

BHT: 68 C.

TD: 2561 M.

TOTALT 30 LOGGER.

## MAIN OPERATIONS FOR WELL: 640709 07

### Main operation: DRILLING

Sub operations	Minutes	Hrs	% of total
BOP ACTIVITIES	750	12,5	2,67
BOP/WELLHEAD EQ	1500	25,0	5,34
CASING	5025	83,8	17,89
DRILL	13065	217,8	46,50
HOLE OPEN	2415	40,3	8,60
SURVEY	180	3,0	0,64
TRIP	5160	86,0	18,37
Total	28095	468,3	100,00

### Main operation: FORMATION EVAL

Sub operations	Minutes	Hrs	% of total
CIRC SAMPLES	150	2,5	2,64
LOG	3600	60,0	63,32
RFT/FIT	390	6,5	6,86
TRIP	1545	25,8	27,18
Total	5685	94,8	100,00

### Main operation: INTERRUPTION

Sub operations	Minutes	Hrs	% of total
FISH	855	14,3	100,00
Total	855	14,3	100,00

### Main operation: MOVING

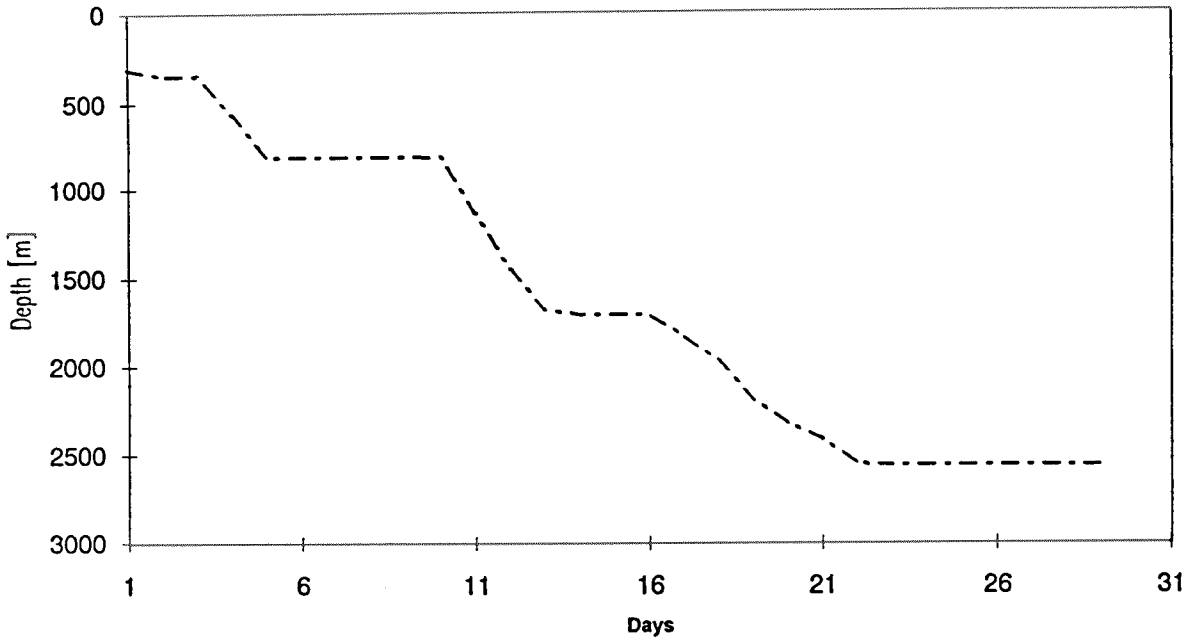
Sub operations	Minutes	Hrs	% of total
ANCHOR	195	3,3	100,00
Total	195	3,3	100,00

### Main operation: PLUG & ABANDON

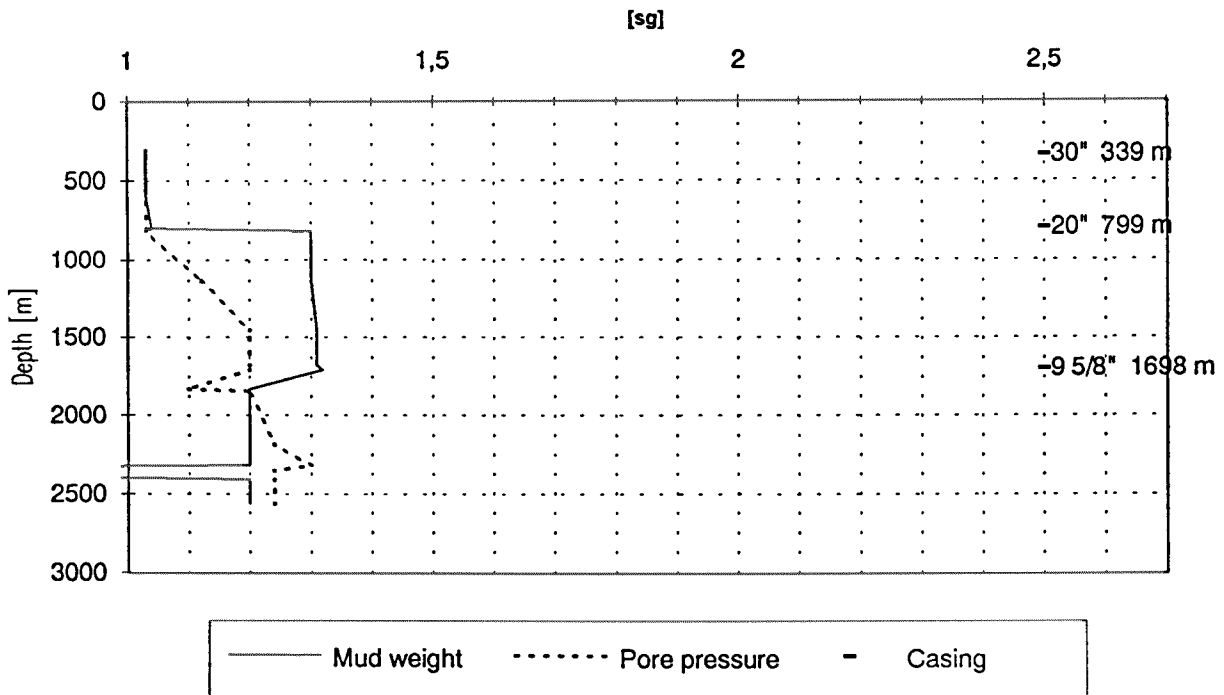
Sub operations	Minutes	Hrs	% of total
CEMENT PLUG	2910	48,5	41,99
CIRC/COND	90	1,5	1,30
CUT	255	4,3	3,68
EQUIP RECOVERY	1020	17,0	14,72
MECHANICAL PLUG	120	2,0	1,73
OTHER	1695	28,3	24,46
TRIP	840	14,0	12,12
Total	6930	115,5	100,00

Total time used 696 hrs ( 29 days)

Depth v.s. time plot for well: 640709 07



Composite plot for well: 640709 07



## Well History 6407/9-7

### GENERAL:

Well 6407/9-7 was located on the crest of the 'Husky' structure approx. 11 km NNE of Draugen well 6407/9-2.

The main objectives of the well were:

- To evaluate the hydrocarbon potential of the Middle Jurassic sandstones of the 'Husky' prospect.
- To evaluate the Early Jurassic sands.
- To fulfill the work obligation of the licence by drilling a second exploration well into the Triassic.

### OPERATIONS:

Wildcat well 6407/9-7 was spudded 26 April 1988 by Wilh. Wilhelmsen semi-submersible rig Treasure Scout and completed 25 May 1988 at a depth of 2561 m in Triassic rocks.

The drilling proceeded without problems. There were no signs of shallow gas, and no signs of hydrocarbons in the hole.

The well is plugged and abandoned as dry.

### TESTING:

No DST tests were performed in the well.

# GEOLOGICAL TOPS

WELL: 6407/9-7

Depth m (RKB)

<i>Nordland Group</i>	264.0
<i>Naust Fm.</i>	264.0
<i>Kai Fm.</i>	496.0
<i>Hordaland Group</i>	907.0
<i>Brygge Fm.</i>	907.0
<i>Rogaland Group</i>	1475.5
<i>Tare Fm.</i>	1475.5
<i>Tang Fm.</i>	1515.0
<i>Shetland Group</i>	1638.5
<i>Cromer Knoll Group</i>	1666.0
<i>Lange Fm.</i>	1666.0
<i>Viking Group</i>	1692.0
<i>Spekk Fm.</i>	1692.0
<i>Fangst Group</i>	1714.0
<i>Garn Fm.</i>	1714.0
<i>Not Fm.</i>	1834.0
<i>Ile Fm.</i>	1864.0
<i>Båt Fm.</i>	1926.0
<i>Ror Fm.</i>	1926.0
<i>Tilje Fm.</i>	2043.0
<i>Åre Fm.</i>	2139.0
<i>Triassic Group</i>	2439.0
<i>Grey Beds</i>	2439.0
<i>Red Beds</i>	2526.0
<i>T.D.</i>	2561.0