

Well no : 31/ 6-05

Operator : STATOIL

Coordinates : 60 37 06.80 N UTM coord. : 6720730 N
 03 48 20.98 E UTM zone 31 544106 E

Licence no : 085 Permit no : 409

Rig : DEEPSEA BERGEN Rig type : SEMI-SUB.

Contractor : ODFJELL DRILLING AND CONSULTING COMPANY A/S

Bottom hole temperature : 61 deg.C Elev. KB : 23 M

Spud date : 84.03.16 Water depth : 304 M

Compl. date : 84.05.21 Total depth : 2082 M

Spud class. : APPRAISAL Age at TD : JURASSIC

Compl. class. : P&A. OIL/GAS DISC.

Seis. loc. : NH 8202 - 120 SP. 246

LICENSEES

9.000 NORSK HYDRO PRODUKSJON A.S
 6.000 SAGA PETROLEUM A.S.
 85.000 DEN NORSKE STATS OLJESELSKAP A.S

CASING AND LEAK-OFF TESTS

Type	Casing diam.	Depth below KB	Hole diam.	Hole depth below KB	Lot mud eqv. g/cm ³
CONDUCTOR	30	389.2	36	390.5	
SURF.COND.	20	649.0	26	656.0	1.54
INTERM.	13 3/8	1424.0	17 1/2	1445.0	1.76
INTERM.	9 5/8	1706.9	12 1/4	1721.0	1.62
OPEN HOLE			8 1/2	2082.0	

CONVENTIONAL CORES

Core no.	Intervals cored meters	Recovery		Series
		M	%	
1	1470.0 - 1497.0	27.0	100.0	UPPER JURASSIC
2	1497.0 - 1523.5	21.0	79.2	UPPER JURASSIC
3	1523.5 - 1550.5	26.7	98.9	UPPER JURASSIC
4	1550.5 - 1557.5	6.9	98.6	UPPER JURASSIC
5	1557.5 - 1584.0	26.5	100.0	UPPER JURASSIC
6	1584.0 - 1611.0	27.0	100.0	U/M JURASSIC
7	1611.0 - 1638.0	26.8	99.3	U/M JURASSIC
8	1638.0 - 1665.5	27.5	100.0	MIDDLE JURASSIC
9	1665.5 - 1693.0	27.5	100.0	MIDDLE JURASSIC
10	1693.0 - 1721.0	27.7	98.9	MIDDLE JURASSIC

MUD PROPERTIES

Depth below KB meter	Mud weight g/cm ³	Funnel viscosity s/qt	Mud type
430.0	1.05	40.0	WATER BASED
550.0	1.07	39.0	WATER BASED
660.0	1.10	54.0	WATER BASED
760.0	1.22	47.0	WATER BASED
1065.0	1.23	48.0	WATER BASED
1155.0	1.22	47.0	WATER BASED
1260.0	1.26	49.0	WATER BASED
1580.0	1.22	52.0	WATER BASED
1725.0	1.10	59.0	WATER BASED

DRILL STEM TEST

INTERVALS AND PRESSURES

Test no.	Interval meter	Choke size	Pressure		
			FSIP	BTHP	FFP
1.0	1568.0 - 1558.0	38.1			

RECOVERY

Test no.	Oil Sm ³ /d	Gas M Sm ³ /d	Oil grav. g/cm ³	Gas grav. rel. air	GOR m ³ /m ³
1.0		1266			

DRILL BIT CUTTINGS AND WET SAMPLES

SAMPLE TYPE	INTERVAL BELOW KB	NUMBER OF SAMPLES
CUTTINGS	400 - 2081.5	480
WET SAMPLES	400 - 2081.5	440

SHALLOW GAS

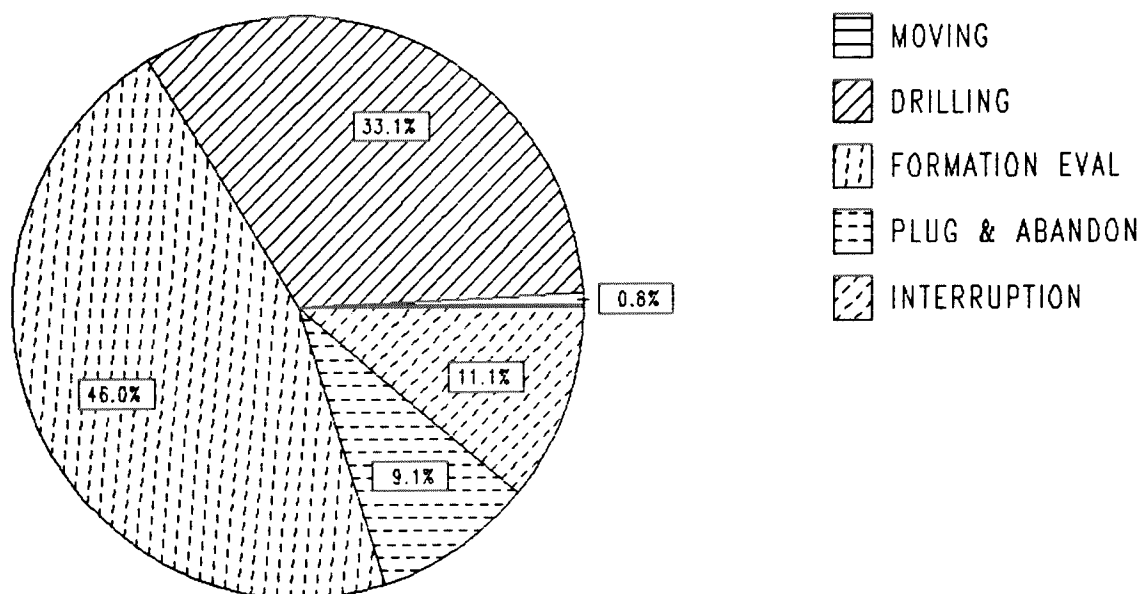
INTERVAL BELOW KB	REMARKS
	NONE

AVAILABLE LOGS

LOG TYPE	INTERVAL	1/200	1/500
DIFL BHC AC GR	389 - 649	X	
DIFL BHC AC	649 - 1445	X	
DIFL BHC AC	1424 - 1720	X	
DIFL BHC AC	1706 - 2082	X	
DIFL BHC AC	389 - 2082		X
CDL CNL	649 - 1445	X	X
CDL CNL	1424 - 1608	X	X
CDL CNL	1553 - 1719	X	X
CDL CNL	1705 - 2079	X	X
DLL MLL	1424 - 1610	X	X
CDM	1424 - 1719	X	
CDM	1706 - 2081	X	
CDM AP	1424 - 1719	X	X
CDM AP	1706 - 2081	X	X
SPECTRALOG	1424 - 1606	X	X
SPECTRALOG	1561 - 1712	X	X
SPECTRALOG	1705 - 2076	X	X
FMT			
CBL VDL AC	328 - 1424	X	
CBL VDL AC	1150 - 1705	X	
DRILL. DATA PRESSURE	327 - 2082		1:5000
PRESSURE EVALUATION	327 - 2082		1:5000
TEMPERATURE DATA	327 - 2082		1:5000
WIRELINE DATA PRESSURE	327 - 2082		1:5000
MUD	327 - 2082		X

DAILY DRILLING REPORT SYSTEM

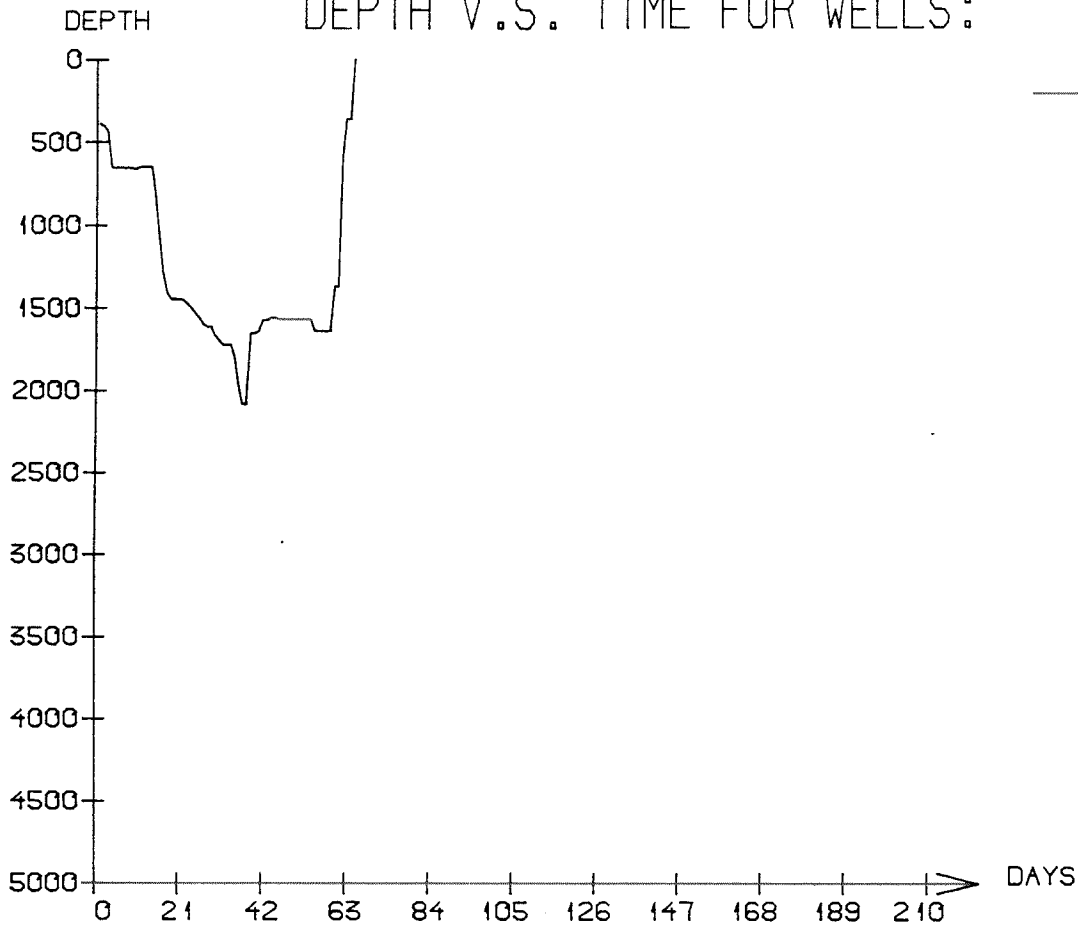
Main operation : 31/06-05



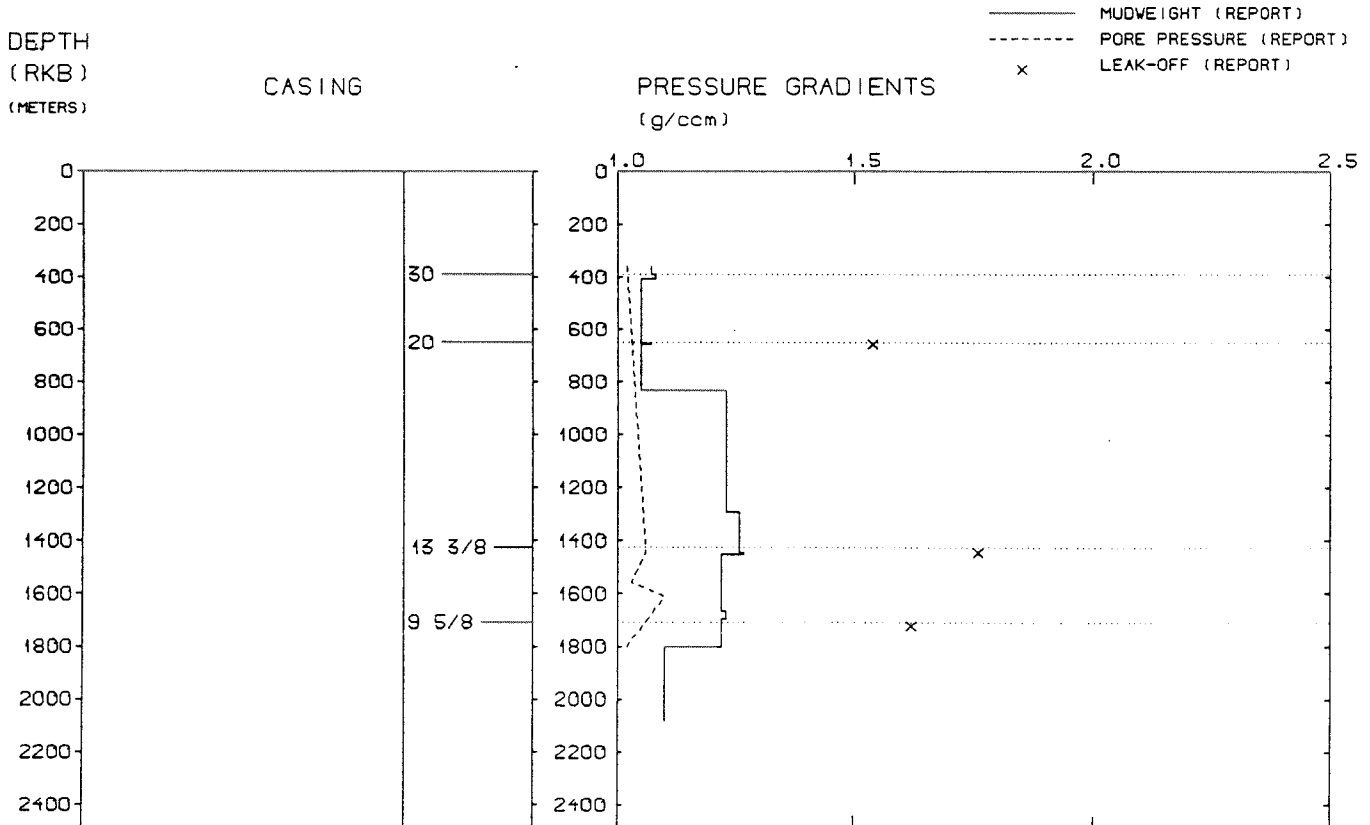
Total : 1586,00 HRS

Main operation	Hours	% of total
MOVING	12,50	0,79
DRILLING	524,50	33,07
FORMATION EVAL	729,00	45,96
PLUG & ABANDON	144,00	9,08
INTERRUPTION	176,00	11,10

DEPTH V.S. TIME FOR WELLS:



WELL: 003106 05 PRESSURE COMPOSITE PLOT



WELL HISTORY - 31/6-5

GENERAL:

The main objectives of the appraisal well 31/6-5 were to test possible gas and oil accumulations in sandstones of Upper to Middle Jurassic age, and to give further information about lateral facies changes within the reservoir sandstones. Hydrocarbons were encountered in the Upper to Middle Jurassic sequence.

OPERATIONS:

The well was spudded 16.03.84 by the semi-submersible rig Deepsea Bergen. Ten cores were cut in the Upper to Middle Jurassic sequence. In the 26" hole lost circulation occurred at 653 m, two cement plugs were set. Several wiper trips were taken due to tight hole. After setting of the 20" casing, the BOP had to be repaired due to leaking during pressure testing. A drilling break occurred at 1476 m in the 12 1/4" hole.

The well was drilled using water based mud.

TESTING:

One test was performed in the Sognefjord Formation, gas was produced.

NOTE:

The three licensees in licence 085 are equal, they do all three operate boreholes in the licence.

GEOLOGICAL TOPS

WELL: 31/ 6-05

	Depth m (RKB)
<i>Nordland Group</i>	327.000
<i>Hordaland Group</i>	512.000
<i>Rogaland Group</i>	816.000
<i>Balder Fm</i>	816.000
<i>Sele Fm</i>	960.000
<i>Lista Fm</i>	1080.000
<i>Shetland Group</i>	1144.000
<i>Cromer Knoll Group</i>	1256.000
<i>Viking Group</i>	1388.000
<i>Draupne Fm</i>	1388.000
<i>Upper Heather Fm</i>	1480.000
<i>Sognefjord Fm</i>	1518.000
<i>Middle Heather Fm</i>	1677.000
<i>Fensfjord Fm</i>	1702.000
<i>Krossfjord Fm</i>	1936.500
<i>Lower Heather Fm</i>	1972.000
<i>Brent Group</i>	1999.000
<i>Ness Fm</i>	1999.000
<i>Dunlin Group</i>	2035.000
<i>Drake Fm</i>	2035.000
<i>TD =</i>	2082.000