

Well no : 7124/03-01

Operator : SAGA

Coordinates : 71 45 36.57 N UTM coord. : 7963823 N
24 46 49.92 E 422476 E

Licence no : 135 Permit no : 548

Rig : ROSS RIG Rig type : SEMI-SUB.

Contractor : ROSS DRILLING CO. A/S

Bottom hole temperature : deg.C Elev. KB : 23 M

Spud. date : 87.05.29 Water depth : 273 M

Compl. date : 87.10.20 Total depth : 4730 M

Spud. class : WILDCAT Form. at TD : CARBON.

Compl. class : P&A. OIL/GAS DISC. Prod. form : JURA/TRIAS

Seisloca : GFW2-37, SP.1162, GFW2-15 SP.858

LICENSEES

5.000000 AMERADA HESS NORGE A/S
 15.000000 ARCO NORGE A/S
 15.000000 SAGA PETROLEUM A.S.
 50.000000 DEN NORSKE STATS OLJESELSKAP A.S
 15.000000 TOTAL NORGE A.S

CASING AND LEAK-OFF TESTS

Type	Casing diam.	Depth below KB	Hole diam.	Hole depth below KB	Lot mud eqv. g/cm3
CONDUCTOR	30	356.0	36	360.0	.
SURF.COND.	20	758.0	26	765.0	1.66
INTERM.	13 3/8	2419.0	17 1/2	2443.0	1.86

CONVENTIONAL CORES

Core no.	Intervals cored meters	Recovery		Series
		M	%	
1	1288.0 - 1300.5	12.5	100.0	
2	1303.5 - 1331.0	27.5	100.0	
3	1331.0 - 1359.0	28.0	100.0	
4	1359.0 - 1386.5	27.5	100.0	
5	1386.5 - 1407.7	21.2	100.0	

MUD PROPERTIES

Depth below KB meter	Mud weighth g/cm3	Viscosity	Mud type
310.000	1.05	0.0	WATER BASED
355.000	1.38	10.0	WATER BASED
360.000	1.05	0.0	WATER BASED
360.000	1.14	8.0	WATER BASED
361.000	1.05	8.0	WATER BASED
529.000	1.12	8.0	WATER BASED
570.000	1.35	10.0	WATER BASED

630.000	1.05	6.0	WATER BASED
702.000	1.40	12.0	WATER BASED
764.000	1.05	13.0	WATER BASED
765.000	1.03	10.0	WATER BASED
765.000	1.20	0.0	WATER BASED
765.000	1.03	10.0	WATER BASED
1023.000	1.10	10.0	WATER BASED
1312.000	1.30	18.0	WATER BASED
1408.000	1.48	20.0	WATER BASED
1408.000	1.46	19.0	WATER BASED
1408.000	1.35	18.0	WATER BASED
1408.000	1.40	16.0	WATER BASED
1599.000	1.35	13.0	WATER BASED
1633.000	1.33	15.0	WATER BASED
1735.000	1.32	15.0	WATER BASED
2215.000	1.30	14.0	WATER BASED
2250.000	1.40	13.0	WATER BASED
2445.000	1.30	9.0	WATER BASED
2508.000	1.24	8.0	WATER BASED
2561.000	1.22	9.0	WATER BASED
2590.000	1.21	9.0	WATER BASED
2618.000	1.22	11.0	WATER BASED
2676.000	1.21	11.0	WATER BASED
2874.000	1.20	9.0	WATER BASED
3160.000	1.23	7.0	WATER BASED
3256.000	1.25	8.0	WATER BASED
3309.000	1.28	10.0	WATER BASED
3547.000	1.30	7.0	WATER BASED
4418.000	1.35	13.0	WATER BASED
4730.000	1.40	12.0	WATER BASED

DRILL BIT CUTTINGS AND WET SAMPLES

SAMPLE TYPE	INTERVAL BELOW KB	NUMBER OF SAMPLES
Cutting	370-4732	810
Wet Samples	370-4732	1050

SHALLOW GAS

Interval REMARKS
below KB

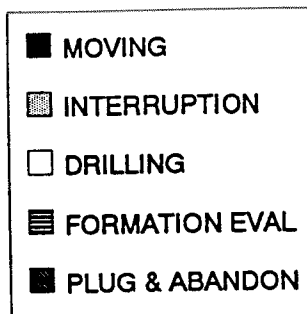
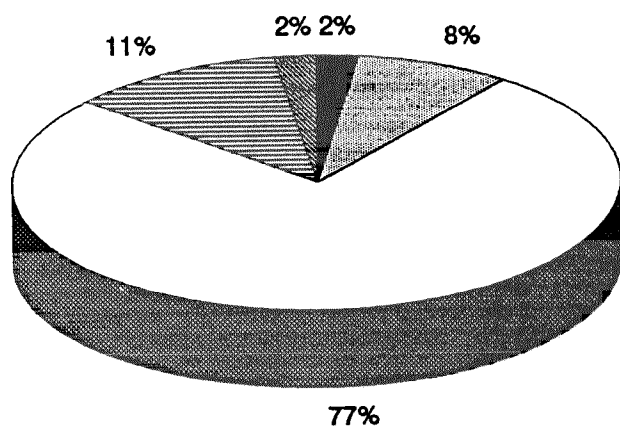
AVAILABLE LOGS

LOG TYPE	INTERVALS	1/200	1/500	Div.
MWD	361.000 - 4730.000		X	
DIL BHC GR	295.000 - 762.000	X	X	
DIL LSS GR	760.000 - 2433.000	X	X	
DIL LSS GR	2419.000 - 4038.000	X	X	
DLL MSFL GR	1160.000 - 1402.000	X	X	
DLL	2419.000 - 2434.000	X	X	
DLL MSFL	4036.000 - 4674.000	X	X	

LDL CNL GR	357.000 - 761.000	X	X
LDL CNL GR	1160.000 - 1406.000	X	X
LDL CNL NGS	760.000 - 2434.000	X	X
LDL CNL GR	2419.000 - 4036.000	X	X
LDL CNL GR	3959.000 - 4681.000	X	X
LDL CNL GR	4681.000 - 4734.000	X	X
SHDT GR	760.000 - 2430.000	X	
SHDT GR	2419.000 - 4039.000	X	X
SHDT GR	3997.000 - 4682.000	X	
CDM AP/SHDT MSD	760.000 - 2432.000	X	X
CDM AP	1200.000 - 2438.000		X
CDM AP	2425.000 - 4038.000	X	X
CDM AP	4020.000 - 4682.000	X	X
RFT HP	1286.000 - 1394.000		
RFT HP	1290.000 - 2354.000		
RFT HP	2571.000 - 3914.000		
RFT STRAIN	1286.000 - 1394.000		
RFT STRAIN	1290.000 - 2354.000		
RFT STRAIN	2571.000 - 3914.000		
NGS RATIOS	760.000 - 2434.000	X	X
CBL VDL GR	600.000 - 2419.000	X	
FORMATION PRESSURE	350.000 - 4750.000		1:5000
MUD	350.000 - 4730.000		X
VELOCITY	362.000 4688.000		1:1000X
(Velocity, airgun survey & calibr.log.			1 stk.)
(Velocity, display of survey records, 1-4			4 stk.)
(Velocity, shifts used in log calibration			1 stk.)
(VSP, 10 cm/s			7 stk.)
(Synthetic seismogram, marine, 10cm/s			5 stk.)

DAILY DRILLING REPORT SYSTEM

MAIN OPERATIONS FOR WELL: 7124/03-01



Main operation	Minutes	Hrs	% of total
MOVING	5250	87,5	2,50
INTERRUPTION	17280	288,0	8,22
DRILLING	159660	2661,0	75,94
FORMATION EVAL	23580	393,0	11,22
PLUG & ABANDON	4470	74,5	2,13
<i>Total</i>	210240	3504,0	100,00

SUB OPERATIONS FOR WELL: 7124/03-01

MAIN OPERATION: MOVING

Sub operation	Minutes	Hrs	% of total
TRANSIT	2490	41,5	47,43
ANCHOR	2520	42,0	48,00
POSITION	240	4,0	4,57
Total	5250	87,5	100,00

MAIN OPERATION: INTERRUPTION

Sub operation	Minutes	Hrs	% of total
MAINTAIN/REP	9030	150,5	52,26
LOST CIRC	1170	19,5	6,77
OTHER	450	7,5	2,60
FISH	4890	81,5	28,30
WAIT	1740	29,0	10,07
Total	17280	288,0	100,00

MAIN OPERATION: DRILLING

Sub operation	Minutes	Hrs	% of total
BOP/WELLHEAD EQ	11460	191,0	7,18
TRIP	36030	600,5	22,57
DRILL	90600	1510,0	56,75
SURVEY	960	16,0	0,60
CIRC/COND	2070	34,5	1,30
CASING	6360	106,0	3,98
OTHER	660	11,0	0,41
REAM	1680	28,0	1,05
WAIT	510	8,5	0,32
PRESS DETECTION	420	7,0	0,26
HOLE OPEN	4530	75,5	2,84
BOP ACTIVITIES	4380	73,0	2,74
Total	159660	2661,0	100,00

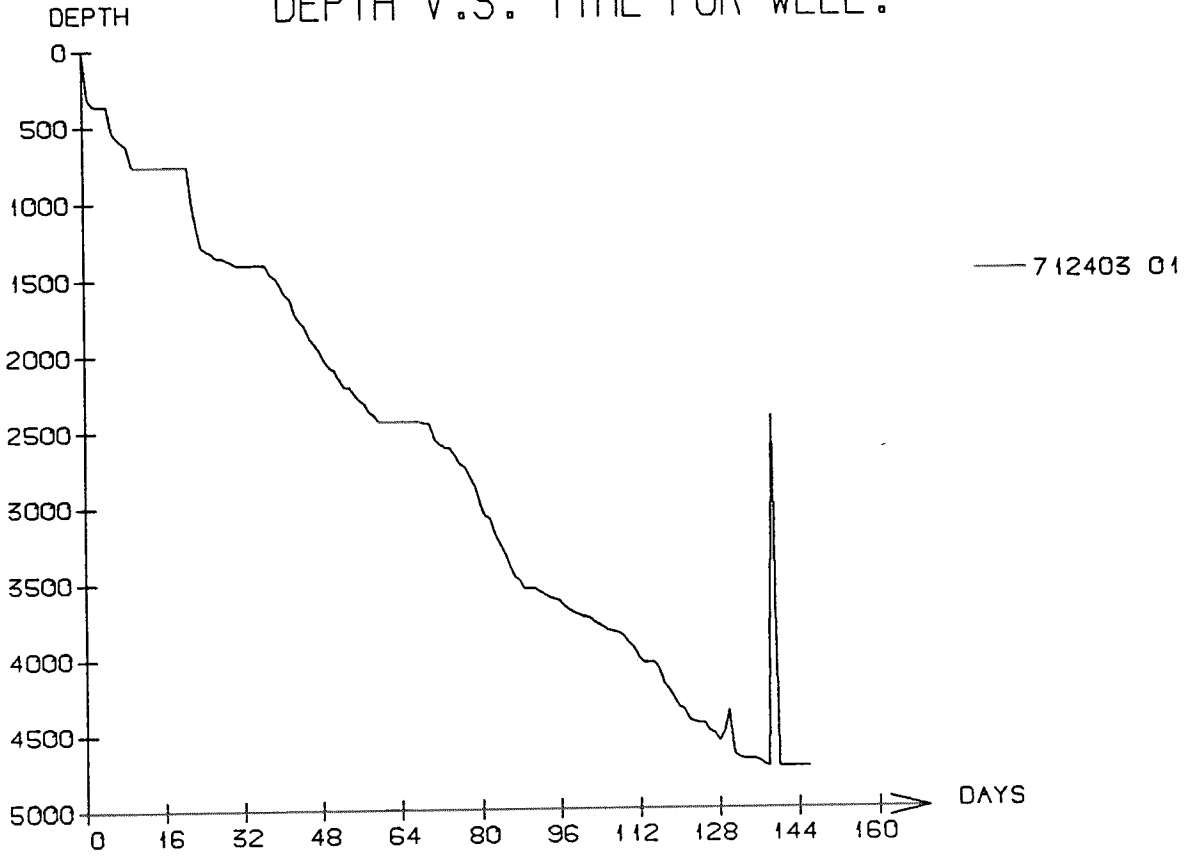
MAIN OPERATION: FORMATION EVAL

Sub operation	Minutes	Hrs	% of total
LOG	13380	223,0	56,74
CIRC/COND	1440	24,0	6,11
TRIP	3660	61,0	15,52
CIRC SAMPLES	180	3,0	0,76
CORE	4200	70,0	17,81
RFT/FIT	630	10,5	2,67
OTHER	90	1,5	0,38
Total	23580	393,0	100,00

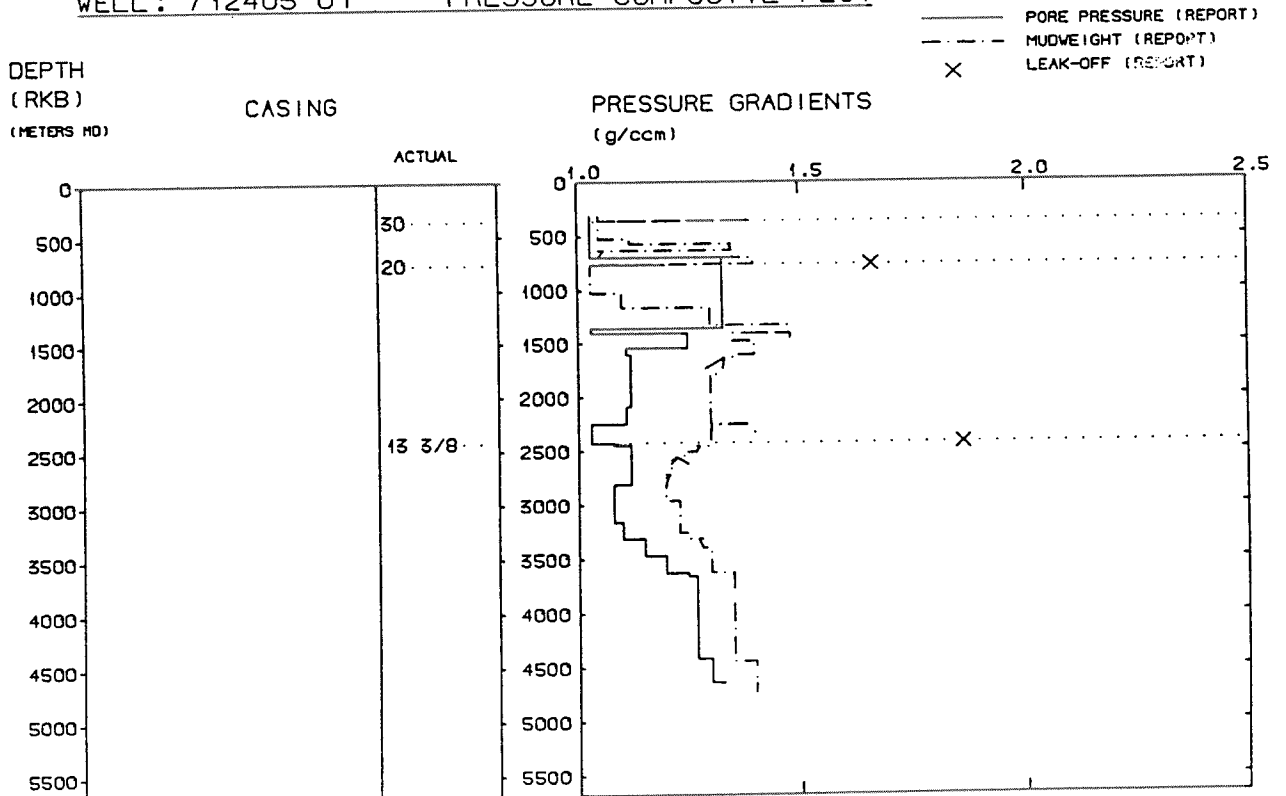
MAIN OPERATION: PLUG & ABANDON

Sub operation	Minutes	Hrs	% of total
TRIP	1890	31,5	42,28
CEMENT PLUG	1140	19,0	25,50
CIRC/COND	240	4,0	5,37
OTHER	210	3,5	4,70
MECHANICAL PLUG	360	6,0	8,05
PERFORATE	120	2,0	2,68
CUT	240	4,0	5,37
EQUIP RECOVERY	270	4,5	6,04
Total	4470	74,5	100,00

DEPTH V.S. TIME FOR WELL :



WELL : 712403 01 PRESSURE COMPOSITE PLOT



Well History 7124/3-1.

GENERAL:

Well 7124/3-1 was designed to drill on a mapped structure in the far east of the Hammerfest Basin. Two levels were identified where tests for hydrocarbons should be performed.

The primary target was reservoir rocks of Middle Jurassic age, and a secondary target was the Late Carboniferous rocks. In addition the source rock potential of the Triassic rocks should be investigated, as well as the whole stratigraphy from seabed to the prognosed T.D. at 4500 m RKB.

OPERATIONS:

Wildcat well 7124/3-1 was spudded by Rosshavet A/S semi-submersible rig Ross Rig 29 May 1987, and completed 20 October 1987 at a depth of 4730 m RKB in rocks of Carbonaceous age.

Drilling proceeded without any significant problems.

Coring commenced in the upper reservoir at 1288,0 m RKB and terminated at 1409,2 m RKB with a recovery between 81,3- and 100 % and a total of five cores cut.

The Lower Jurassic reservoir rocks were encountered at 1284,5 m RKB, approximately 11 m below the prognosed depth, but the Carbonaceous reservoir was not discovered as a clear lithological boundary. The oil/gas contact was identified at 1297,5 m RKB, and the water/oil contact at 1298,5 m RKB. The gas-cap was 13 m thick, with an oil leg below the gas of 1 m thickness.

The well was plugged and abandoned as a minor gas and oil discovery.

TESTING:

No DST-tests were performed in this well.

GEOLOGICAL TOPS

WELL: 7124/3-1.

	<i>Depth m (RKB)</i>
<i>Nordland Group</i>	295,5
<i>Sotbakken Group</i>	406,0
<i>Nygrunnen Group</i>	573,5
<i>Nordvestbanken Group</i>	618,0
<i>Kolmule Fm</i>	618,0
<i>Kolje Fm</i>	1220,0
<i>Teistengrunnen Group</i>	1232,5
<i>Hekkingen Fm</i>	1232,5
<i>Realgrunnen Group</i>	1284,5
<i>Tubåen Fm</i>	1284,5
<i>Fruholmen Fm</i>	1304,5
<i>Ingøydjupet Group</i>	1438,0
<i>Snadd Fm</i>	1438,0
<i>Kobbe Fm</i>	1892,5
<i>Klappmyss Fm</i>	2334,0
<i>Havert Fm</i>	2671,0
<i>Tempelfjorden Group Equiv.</i>	3491,0
<i>Gipsdalen Group Equiv.</i>	3900,0
<i>T.D. (DD)</i>	4730,0