

Well no : 6507/07-08

Operator : CONOCO

Coordinates : 65 17 52.68 N
07 18 49.87 EUTM coord. : 7242895 N
421377 E

Licence no : 95

Permit no : 550

Rig : HUNTER

Rig type : SEMI-SUB.

Contractor : WILHELMSSEN OFFSHORE SERVICES

Bottom hole temperature : deg.C

Elev. KB : 25 M

Spud. date : 87.06.09

Water depth : 332 M

Compl. date : 87.08.02

Total depth : 2855 M

Spud. class : APPRAISAL

Form. at TD : JURASSIC

Compl. class : P&A. OIL DISCOVERY

Prod. form : JURASSIC

Seisloca : CN 8502 - 482 SP. 570

LICENSEES

10.000000 ARCO NORGE A/S
 30.000000 NORSKE CONOCO A/S
 50.000000 DEN NORSKE STATS OLJESELSKAP A.S
 10.000000 TENNECO OIL NORWAY A/S

CASING AND LEAK-OFF TESTS

Type	Casing diam.	Depth below KB	Hole diam.	Hole depth below KB	Lot mud eqv. g/cm ³
CONDUCTOR	30	468.0	36	1035.0	1.02
SURF.COND.	20	1027.2	26	1054.0	1.51
INTERM.	13 3/8	2398.5	17 1/2	2403.0	1.84
INTERM.	9 5/8	2833.5	12 1/4	2855.0	.

CONVENTIONAL CORES

Core no.	Intervals cored meters	Recovery		Series
		M	%	
1	2405.0 - 2423.5	18.5	100.0	MIDDLE JURASSIC MIDDLE JURASSIC MIDDLE JURASSIC MIDDLE JURASSIC LOWER JURASSIC LOWER JURASSIC
2	2423.5 - 2442.0	18.2	98.4	
3	2442.0 - 2458.9	16.9	100.0	
4	2460.5 - 2479.0	18.5	100.0	
5	2479.0 - 2497.5	18.3	98.9	
6	2497.5 - 2516.8	19.3	100.0	
7	2516.0 - 2525.0	9.0	100.0	

MUD PROPERTIES

Depth below KB meter	Mud weight g/cm ³	Viscosity	Mud type
544.000	1.04	0.0	WATER BASED
1021.000	1.03	0.0	WATER BASED
1035.000	1.04	0.0	WATER BASED
1054.000	1.16	0.0	WATER BASED
1211.000	1.17	0.0	WATER BASED

1541.000	1.28	0.0	WATER BASED
1795.000	1.32	0.0	WATER BASED
1953.000	1.38	0.0	WATER BASED
2199.000	1.40	0.0	WATER BASED
2403.000	1.42	18.0	WATER BASED
2403.000	1.20	0.0	WATER BASED
2525.000	1.21	14.0	WATER BASED
2855.000	1.20	16.0	WATER BASED
2855.000	1.21	19.0	WATER BASED
2855.000	1.20	13.0	WATER BASED
2855.000	1.19	9.0	WATER BASED

DRILL STEM TEST

INTERVALS AND PRESSURES

Test no	interval meter	Choke size	Pressure (PSI)		
			WHP	BTHP	FFP
1.0	2473.000 - 2480.000	7.9	1129.0	3728.6	3680.0
	Test temperature: 184 °C				
2.0	2441.000 - 2438.000	20.6	1118.0	3689.8	3592.0
	Test temperature: 191 °C				

RECOVERY

Test no.	Oil Sm3/d	Gas Sm3/d	Oil grav. g/cm3	Gas grav. rel. air	GOR m3/m3
1.0	187	19909	0.876	0.676	106
2.0	1105	136587	0.882	0.700	124

DRILL BIT CUTTINGS AND WET SAMPLES

SAMPLE TYPE	INTERVAL BELOW KB	NUMBER OF SAMPLES
Cutting		
Wet Samples	1035-2855	180

SHALLOW GAS

Interval below KB	REMARKS

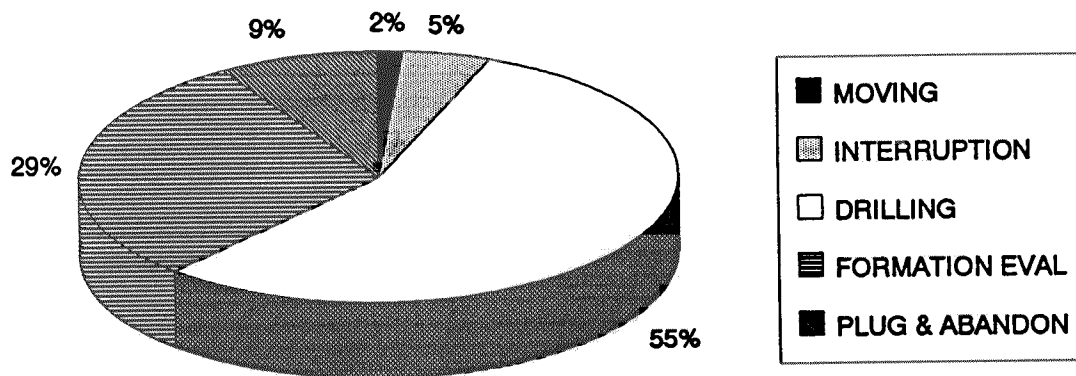
AVAILABLE LOGS

LOG TYPE	INTERVALS	1/200	1/500	Div.
DIL SDT MSFL GR	2399.000 - 2834.000	X	X	
LDL CNL NGL	2395.000 - 2826.000	X	X	
DLL NGL CALI	2395.000 - 2826.000	X	X	
NGT (6" SAMPLING)	2399.000 - 2815.000	X		
NGT (1.2" SAMPLING)	2399.000 - 2815.000	X		
RFT SWG	2439.000 - 2797.000	X		

<i>MUD</i>	<i>358.000 - 2855.000</i>	<i>X</i>
<i>VELOCITY</i>	<i>1178.000 - 2832.000</i>	<i>X</i>
<i>(VSP, rigshot, plot 1-5</i>		<i>5 stk.)</i>
<i>(Frequency test, 10 cm/s</i>		<i>4 stk.)</i>
<i>(Velocity, description of shift in calibr.</i>		<i>1 stk.)</i>

DAILY DRILLING REPORT SYSTEM

MAIN OPERATIONS FOR WELL: 6507/07-08



Main operation	Minutes	Hrs	% of total
MOVING	1200	20,0	1,52
INTERRUPTION	3840	64,0	4,85
DRILLING	44040	734,0	55,61
FORMATION EVAL	23310	388,5	29,43
PLUG & ABANDON	6810	113,5	8,60
<i>Total</i>	79200	1320,0	100,00

SUB OPERATIONS FOR WELL: 6507/07-08

MAIN OPERATION: MOVING

Sub operation	Minutes	Hrs	% of total
ANCHOR	1200	20,0	100,00
<i>Total</i>	1200	20,0	100,00

MAIN OPERATION: INTERRUPTION

Sub operation	Minutes	Hrs	% of total
MAINTAIN/REP	720	12,0	18,75
FISH	3120	52,0	81,25
<i>Total</i>	3840	64,0	100,00

MAIN OPERATION: DRILLING

Sub operation	Minutes	Hrs	% of total
OTHER	1560	26,0	3,54
TRIP	10620	177,0	24,11
DRILL	18240	304,0	41,42
SURVEY	150	2,5	0,34
CIRC/COND	2580	43,0	5,86
CASING	5700	95,0	12,94
HOLE OPEN	540	9,0	1,23
BOP ACTIVITIES	3120	52,0	7,08
REAM	1530	25,5	3,47
<i>Total</i>	44040	734,0	100,00

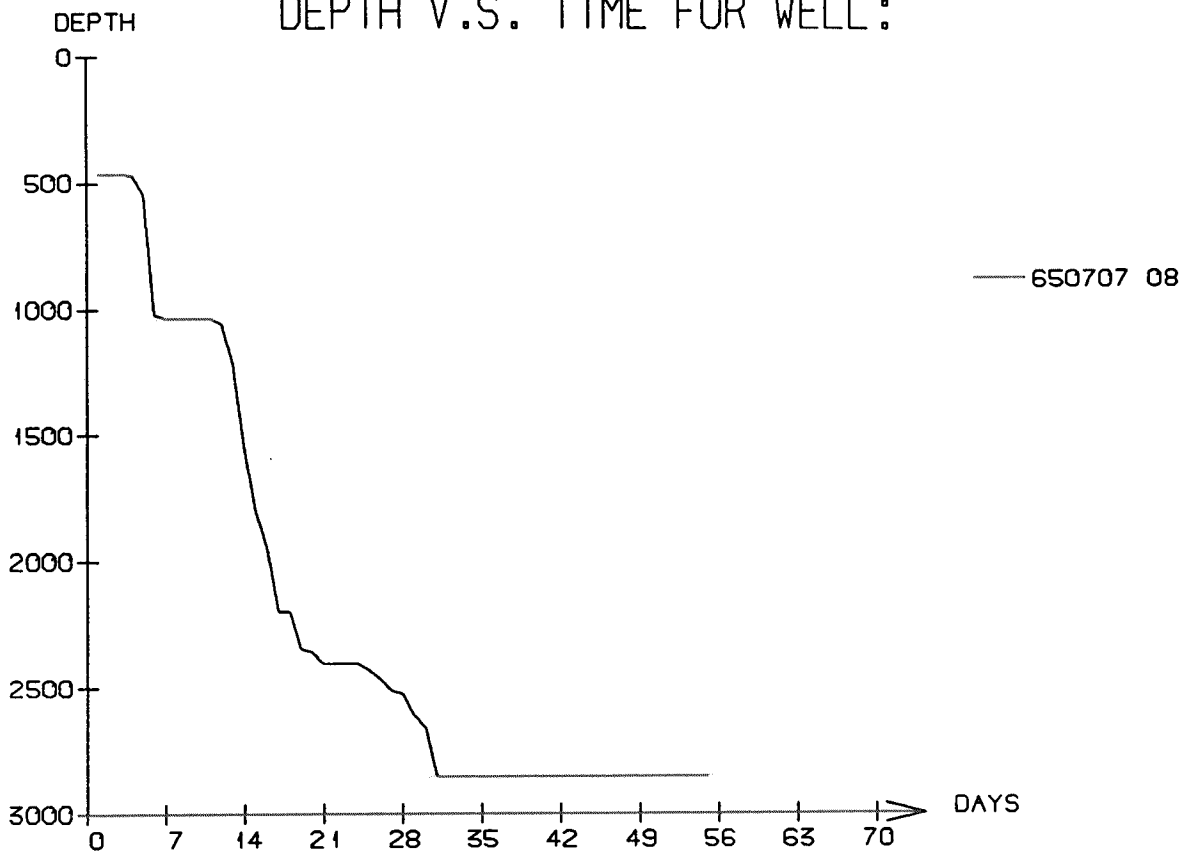
MAIN OPERATION: FORMATION EVAL

Sub operation	Minutes	Hrs	% of total
CIRC/COND	90	1,5	0,39
RFT/FIT	120	2,0	0,51
TRIP	9240	154,0	39,64
CORE	2100	35,0	9,01
LOG	2430	40,5	10,42
DST	8220	137,0	35,26
OTHER	1110	18,5	4,76
<i>Total</i>	23310	388,5	100,00

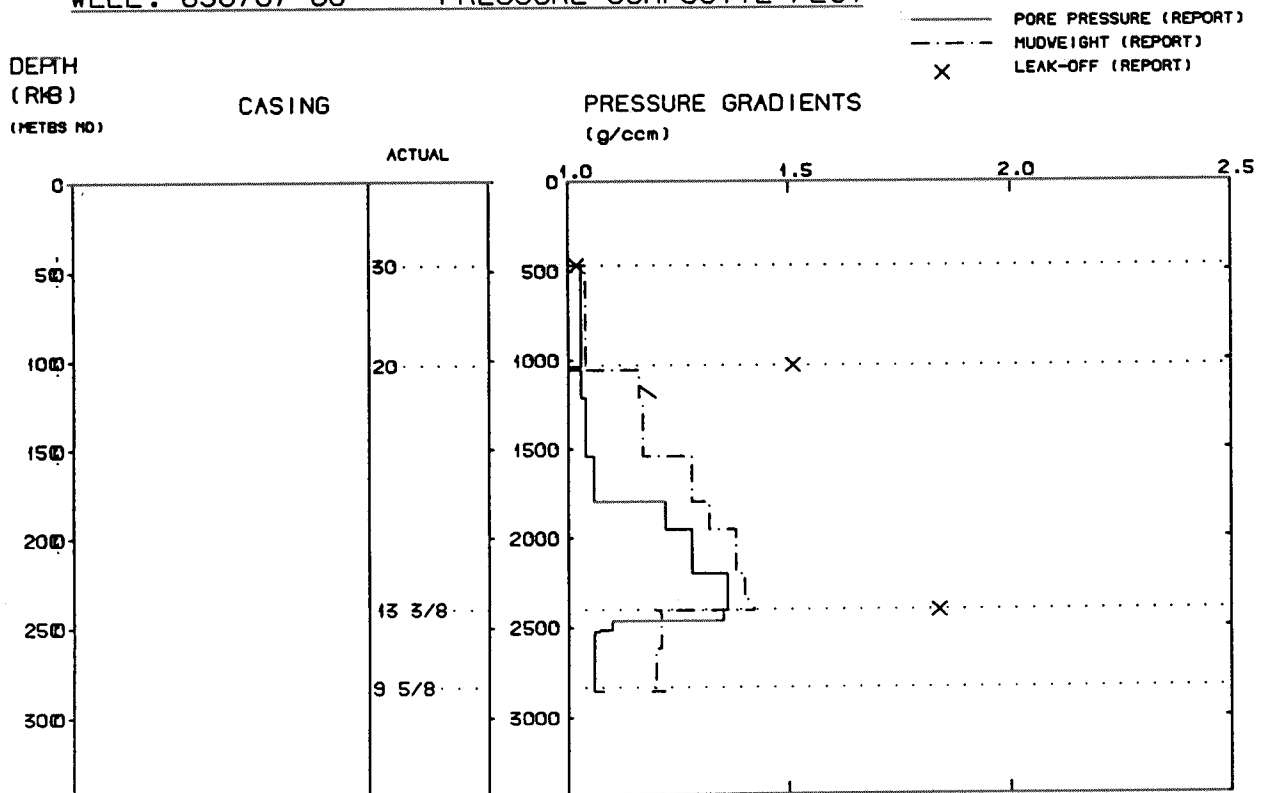
MAIN OPERATION: PLUG & ABANDON

Sub operation	Minutes	Hrs	% of total
MECHANICAL PLUG	690	11,5	10,13
TRIP	1290	21,5	18,94
SQUEEZE	720	12,0	10,57
CEMENT PLUG	300	5,0	4,41
PERFORATE	210	3,5	3,08
OTHER	1470	24,5	21,59
CUT	1200	20,0	17,62
EQUIP RECOVERY	930	15,5	13,66
<i>Total</i>	6810	113,5	100,00

DEPTH V.S. TIME FOR WELL :



WELL: 650707 08 PRESSURE COMPOSITE PLOT



1.5e

Well History 6507/7-8.

GENERAL:

Well 6507/7-8 was designed to drill in the northern part of the Haltenbanken area as a replacement for well 6507/7-7 which was abandoned due to technical problems.

The structure is a southward plunging horst block formed by Late Jurassic - Early Cretaceous tensional faulting. Closure is provided by convergence of two major bounding faults. The main objectives for the well were:

- 1) confirm the presence of the Fangst Group reserves in the SE fault block of the Heidrun field.
- 2) evaluate vertical communication between the three major Fangst Group sand units.
- 3) obtain a complete core section of the Fangst Group including upper and lower boundaries.
- 4) obtain orientated core data through the reservoir for fracture orientation studies.

OPERATIONS:

Appraisal well 6507/7-8 was spudded by Wilh. Wilhelmsen semi-submersible rig Treasure Hunter 9 Juni 1987 and completed 2 August 1987 at a depth of 2855 m RKB in rocks of Lower Jurassic age. Drilling has proceeded without significant problems.

Coring commenced at 2405 m and ended at 2525 m RKB with a total of seven cores cut. Oil-shows in the cored section. Oil/water contact came in at 2495 m RKB. Fangst Group rocks came in at 2436 m RKB approximately as prognosed.

Plugged and abandoned as an oil discovery

TESTING:

Two DST-tests were performed in the oil zones of this well.

GEOLOGICAL TOPS

WELL: 6507/7-8

	Depth m (RKB)
<i>Nordland Group</i>	357,0
<i>Naust Fm</i>	598,0
<i>Kai Fm</i>	1463,0
<i>Hordaland Group</i>	1877,0
<i>Brygge Fm</i>	1877,0
<i>Rogaland Group</i>	1996,0
<i>Tare Fm</i>	1996,0
<i>Tang Fm</i>	2023,0
<i>Shetland Group</i>	2082,0
<i>Springar Fm</i>	2082,0
<i>Nise Fm</i>	2298,0
<i>Kvitnos Fm</i>	2348,0
<i>Viking Group</i>	2384,0
<i>Melke Fm</i>	2384,0
<i>Fangst Group</i>	2436,0
<i>Garn Fm</i>	2436,0
<i>Not Fm</i>	2468,0
<i>Ile Fm</i>	2470,0
<i>Båt Group</i>	2496,8
<i>Ror Fm</i>	2496,8
<i>Tofte Fm</i>	2505,0
<i>Ror Fm</i>	2525,0
<i>Tilje Fm</i>	2558,0
<i>Åre Fm</i>	2787,0
<i>T.D.</i>	2855,0