



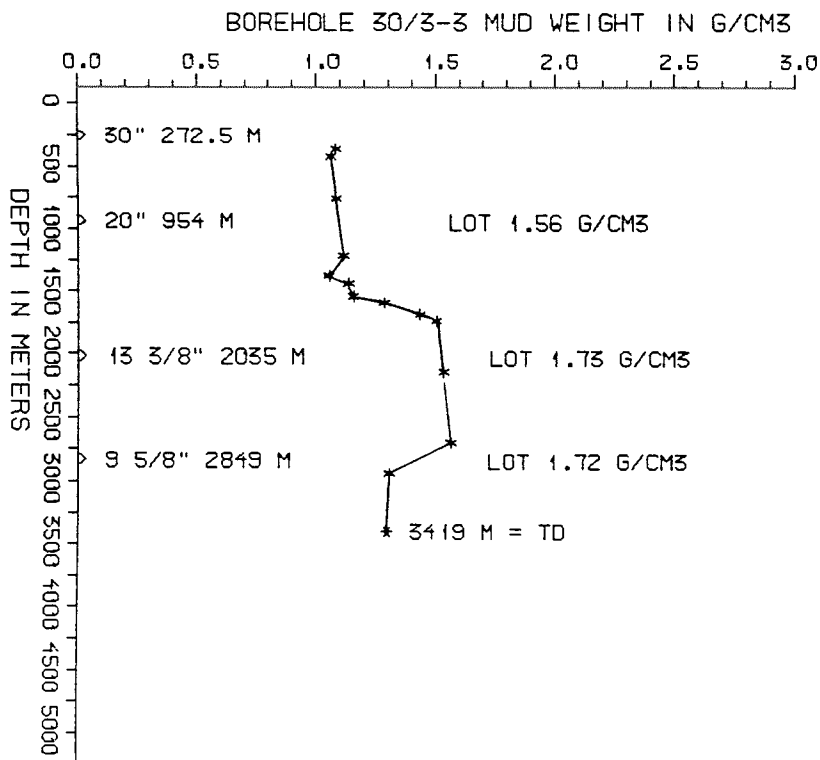
DRILL STEM TEST									
TEST NO	DEPTH BELOW KB	CHOKE SIZE mm	RECOVERY					PRESS. (psi)	
			OIL Sm <sup>3</sup> /d	GAS M Sm <sup>3</sup> /d	OIL GRAV. g/cm <sup>3</sup>	GAS GRAV. rel.air	GOR m <sup>3</sup> /m <sup>3</sup>	FSIP	WHP
	NONE								

AVAILABLE LOGS			
LOG TYPE	INTERVALS	1/200	1/500
ISF LSS MSFL GR	206 - 967	X	
ISF LSS MSFL	956 - 2052	X	
ISF LSS MSFL	2036 - 2859	X	
ISF LSS MSFL	2848 - 3425	X	
ISF LSS MSFL GR	270 - 3424		X
LDL	270 - 967	X	
LDL	956 - 2053	X	
LDL	2036 - 2860	X	
LDL CNL	2848 - 3424	X	
LDL CNL	270 - 3424		X
SHDT	2566 - 2860	X	
SHDT	2848 - 3421	X	
STRATIGRAPHIC DIPMETER COMPUTATION	2570 - 2860	X	
STRATIGRAPHIC DIPMETER COMPUTATION	2850 - 3420	X	
RFT	3007 - 3403	1:100	
CBL VDL CCL	200 - 2025	X	
CBL VDL CCL	208 - 2845	X	
PRESSURE EVALUATION	274 - 3419	1:5000	
TEMPERATURE DATA	274 - 3419	1:5000	
DRILLING DATA PRESSURE	274 - 3419	1:5000	
WIRELINE DATA PRESSURE	274 - 3419	1:5000	
MUD	274 - 3419		X
VELOCITY (L.T.S.)	271 - 3415	1:1000	X
(Air Gun Well Velocity Survey & C.L.D.			1 stk)
(Synthetic Seismogram Marine, 10 cm/s,			1 stk)
(Synthetic Seismogr, 20 cm/s, Western, 4.8.86			1 stk)
(Synthetic Seismogr, 10 cm/s, SSL, b/p-w/t,			2 stk)
(VSP - SSL, 10 cm/s, w/t-b/p, Proc:June-83			14 stk)
(Zero Offset VSP - WESTERN, 20 cm/s, b/p,			8 stk)
nor. polarity, Proc:April-86,			

MUD PROPERTIES			
DEPTH BELOW KB m	WEIGHT g/cm <sup>3</sup>	FUNNEL VISC. sec	FILTRATE LOSS cm <sup>3</sup>
285	1.05	40	
340	1.03	40	
675	1.05	42	
1135	1.08	47	
1300	1.02	45	
1360	1.10	43	
1460	1.12	54	
1510	1.25	54	
1600	1.40	54	
1650	1.47	52	
2060	1.50	55	
2620	1.53	48	
2860	1.27	44	
3419	1.27	54	

DRILL BIT CUTTINGS AND WET SAMPLES		
SAMPLE TYPE	INTERVAL BELOW KB	NUMBER OF SAMPLES
CUTTINGS	280 - 3419	720
WET SAMPLES	280 - 3418	648

SHALLOW GAS	
DEPTH INTERVAL m KB	REMARKS
733-737	POSSIBLE SHALLOW GAS



## WELL HISTORY - 30/3-3

### GENERAL:

*The primary objective of the wildcat 30/3-3 was the sandstone of the Middle Jurassic Brent Group. Secondary objective was sandstone of the Lower Jurassic Brent Group. No hydrocarbons were encountered in the Jurassic Sandstones.*

### OPERATIONS:

*The well was spudded 02.04.83 by the semi-submersible rig Ross Isle. One core was cut in the Ness Formation, no shows were found. 30/3-3 was drilled to TD without having any special hole problems or excessive down time. The well was drilled using waterbased mud.*

### TESTING:

*The well was not tested.*

GEOLOGICAL TOPS  
WELL 30/3-3

	Depth m (RKB)
Nordland Group	208,0
Utsira Fm	733,0
Hordaland Group	883,0
Rogaland Group	1916,0
Balder Fm	1916,0
Sele Fm	2006,0
Lista Fm	2046,0
Shetland Group	2212,0
Viking Group	2663,0
Draupne Fm	2663,0
Heather Fm	2763,0
Brent Group	2978,0
Ness Fm	2978,0
Etive Fm	3034,0
Dunlin Group	3048,0
Drake Fm	3048,0
Cook Fm	3241,0
Burton Fm/Amundsen Fm	3288,0
Statfjord Fm	3387,0
TD =	3419,0