

Well no : 9/02-02 Operator : STATOIL

Coordinates : 57 52 44.35 N UTM coord. : 6416242 N
 04 24 0.69 E 583043 E

Licence no : 114 Permit no : 558

Rig : ROSS ISLE Rig type : SEMI-SUB.

Contractor : ROSS DRILLING CO. A/S

Bottom hole temperature : deg.C Elev. KB : 22 M

Spud. date : 87.08.08 Water depth : 99 M

Compl. date : 87.09.21 Total depth : 3577 M

Spud. class : WILDCAT Form. at TD : TRIASSIC

Compl. class : P&A. DRY HOLE Prod. form :

Seisloca : ST 8626 - 418 SP. 173

LICENSEES

10.000000 DEMINEX (NORGE) A/S
 10.000000 NORSK OCCIDENTAL A/S
 15.000000 SAGA PETROLEUM A.S.
 15.000000 A/S NORSKE SHELL
 50.000000 DEN NORSKE STATS OLJESELSKAP A.S

CASING AND LEAK-OFF TESTS

Type	Casing diam.	Depth below KB	Hole diam.	Hole depth below KB	Lot mud eqv. g/cm3
CONDUCTOR	30	182.0	36	182.0	.
SURF.COND.	20	334.0	26	366.0	1.39
INTERM.	13 3/8	1093.0	17 1/2	1128.0	1.78
INTERM.	9 5/8	2838.0	12 1/4	2875.0	1.80
OPEN HOLE		3577.0	8 1/2	3577.0	.

MUD PROPERTIES

Depth below KB meter	Mud weight g/cm3	Viscosity	Mud type
350.000	1.05	19.0	WATER BASED
350.000	1.31	30.0	WATER BASED
696.000	1.13	17.0	WATER BASED
793.000	1.12	15.0	WATER BASED
848.000	1.13	16.0	WATER BASED
876.000	1.15	20.0	WATER BASED
920.000	1.31	32.0	WATER BASED
1125.000	1.15	16.0	WATER BASED
1153.000	1.10	12.0	WATER BASED
2520.000	1.15	18.0	WATER BASED
2713.000	1.31	30.0	WATER BASED
2738.000	1.20	19.0	WATER BASED
2871.000	1.23	18.0	WATER BASED
2871.000	1.30	21.0	WATER BASED
2942.000	1.27	28.0	WATER BASED
3550.000	1.31	29.0	WATER BASED

DRILL BIT CUTTINGS AND WET SAMPLES

SAMPLE TYPE	INTERVAL BELOW KB	NUMBER OF SAMPLES
Cutting	370-3550	750
Wet Samples	370-3550	450

SHALLOW GAS

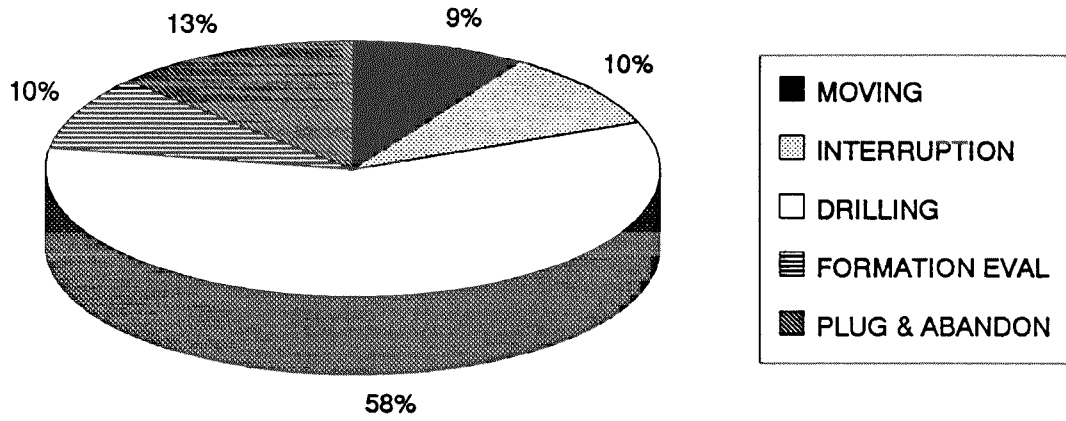
Interval below KB	REMARKS
----------------------	---------

AVAILABLE LOGS

LOG TYPE	INTERVALS	1/200	1/500	Div.
DIFL LS BHC AC GR	334.000 - 1111.000	X	X	
DIFL LS BHC AC GR	1092.000 - 2833.000	X	X	
DIFL MLL BHC AC GR	2835.000 - 3542.000	X	X	
CDL GR	334.000 - 1093.000	X	X	
CDL GR	1092.000 - 2814.000	X	X	
CZDL CNL GR	2835.000 - 3543.000	X	X	
CNL	3050.000 - 3517.000	X	X	
SHDT	2854.000 - 3521.000	X		
CDM AP/SHDT 4-ARM	2854.000 - 3521.000	X	X	
FMT HP CRYSTAL	3136.000 - 3183.000		X	
AC CBL VDL GR	350.000 - 1092.000	X		
AC CBL VDL GR	2000.000 - 2835.000	X		
DRILL. DATA PRESS.	120.000 - 3550.000			1:2000
TEMP. DATA LOG	120.000 - 3550.000			1:2000
PRESS EVALUATION	120.000 - 3550.000			1:2000
MUD	120.000 - 3550.000			X
VELOCITY	350.000 - 3530.000			X
(VSP, Rigshot				9 stk.)
(Synthetic seismogram, 10-30 cm/s				10 stk.)
(Frequency test, 10 cm/s				4 stk.)

DAILY DRILLING REPORT SYSTEM

MAIN OPERATIONS FOR WELL: 09/02-02



Main operation	Minutes	Hrs	% of total
MOVING	6750	112,5	9,38
INTERRUPTION	6930	115,5	9,63
DRILLING	42150	702,5	58,54
FORMATION EVAL	6870	114,5	9,54
PLUG & ABANDON	9300	155,0	12,92
<i>Total</i>	72000	1200,0	100,00

SUB OPERATIONS FOR WELL: 09/02-02

MAIN OPERATION: MOVING

Sub operation	Minutes	Hrs	% of total
ANCHOR	3750	62,5	55,56
TRANSIT	3000	50,0	44,44
<i>Total</i>	6750	112,5	100,00

MAIN OPERATION: INTERRUPTION

Sub operation	Minutes	Hrs	% of total
WAIT	1410	23,5	20,35
MAINTAIN/REP	270	4,5	3,90
FISH	5250	87,5	75,76
<i>Total</i>	6930	115,5	100,00

MAIN OPERATION: DRILLING

Sub operation	Minutes	Hrs	% of total
BOP/WELLHEAD EQ	3180	53,0	7,54
TRIP	7530	125,5	17,86
DRILL	20340	339,0	48,26
CIRC/COND	2250	37,5	5,34
HOLE OPEN	630	10,5	1,49
SURVEY	660	11,0	1,57
CASING	5790	96,5	13,74
OTHER	60	1,0	0,14
PRESS DETECTION	30	0,5	0,07
REAM	1380	23,0	3,27
BOP ACTIVITIES	300	5,0	0,71
<i>Total</i>	42150	702,5	100,00

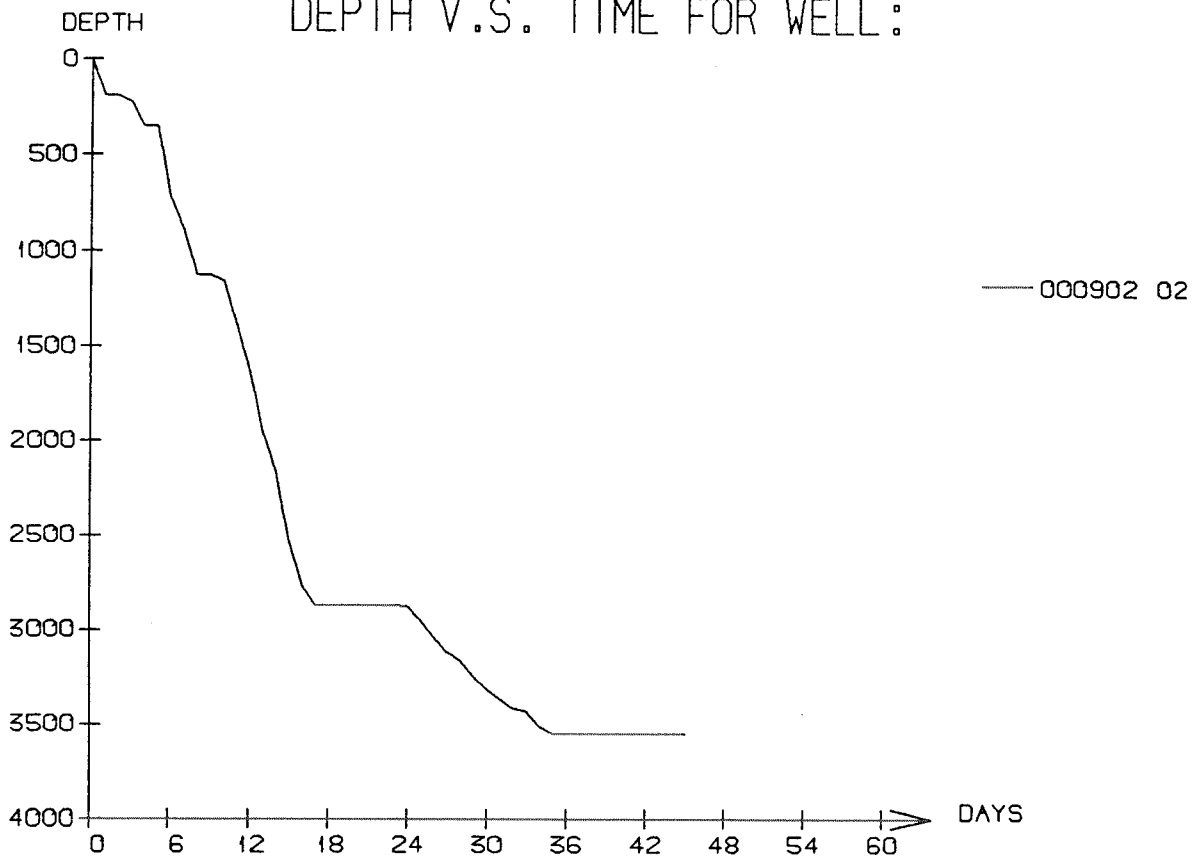
MAIN OPERATION: FORMATION EVAL

Sub operation	Minutes	Hrs	% of total
LOG	3960	66,0	57,64
CORE	2010	33,5	29,26
TRIP	480	8,0	6,99
CIRC SAMPLES	240	4,0	3,49
CIRC/COND	180	3,0	2,62
<i>Total</i>	6870	114,5	100,00

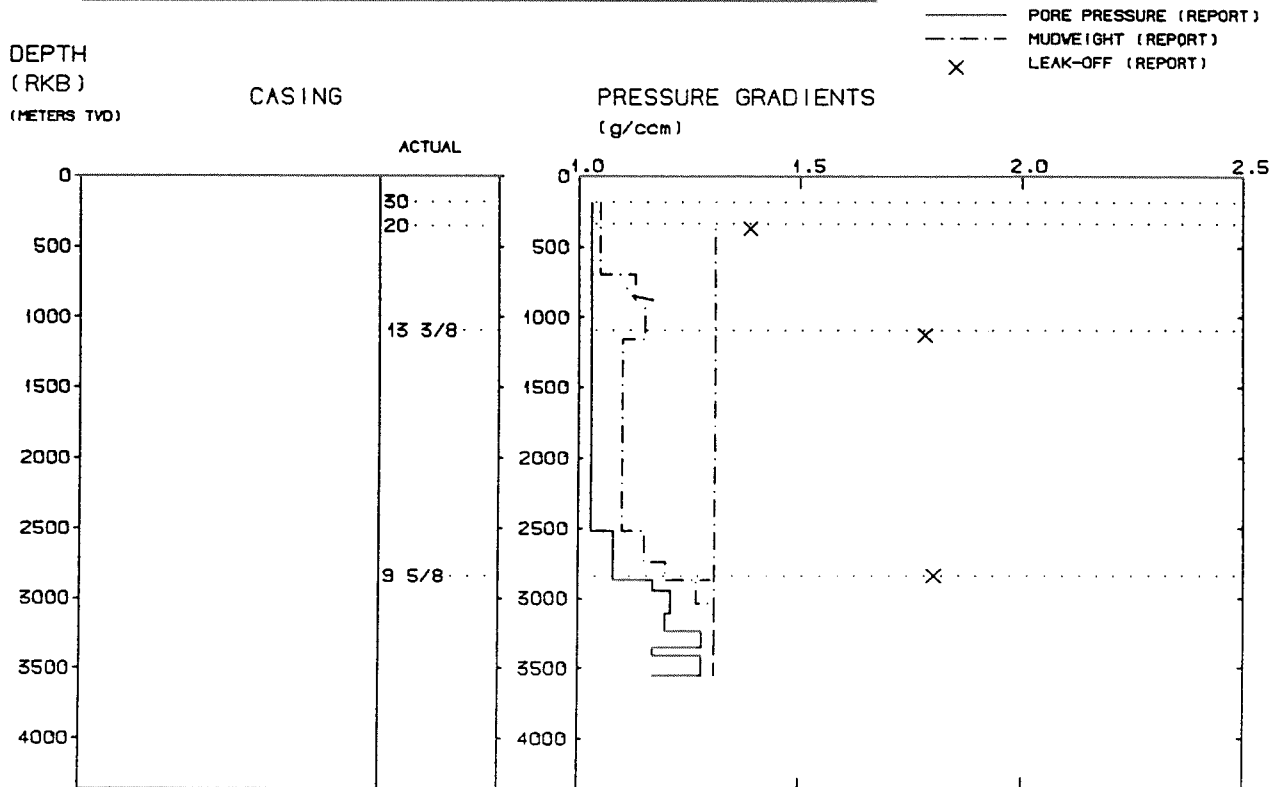
MAIN OPERATION: PLUG & ABANDON

Sub operation	Minutes	Hrs	% of total
TRIP	3780	63,0	40,65
CIRC/COND	870	14,5	9,35
CEMENT PLUG	360	6,0	3,87
PERFORATE	330	5,5	3,55
MECHANICAL PLUG	390	6,5	4,19
SQUEEZE	180	3,0	1,94
EQUIP RECOVERY	1410	23,5	15,16
CUT	810	13,5	8,71
OTHER	1170	19,5	12,58
<i>Total</i>	9300	155,0	100,00

DEPTH V.S. TIME FOR WELL :



WELL: 000902 02 PRESSURE COMPOSITE PLOT



Well History 9/2-2.

GENERAL:

Wildcat well 9/2-2 was designed to be drilled on the Alpha structure in the north-western part of the block, which is a fault-induced dome-formed structural trap.

The primary object for the well was to test the Jurassic Sst of the Sandnes- and Bryne Formations in the structure. A secondary object was testing the structural and geophysical interpretations, and improve the geological geochemical and paleontological understanding of the area.

Drilling program was designed and equipment evaluated on the fact that this well could be a future producing well.

OPERATIONS:

The well was spudded by Ross Drilling semi-submersibel rig Ross Isle 8 august 1987, and was completed 21 september 1987 at a depth of 3528 m RKB in rocks of Triassic age. Drilling went on with some minor problems in the interval 2400- 3000 m RKB. Two cores were cut, one in the Sandnes Formation and one in the Fjerritslev Formation.

After having run final electrical logs, it was decided not to test the well.

Top reservoir was encountered at 3131 m RKB. Good shows in drill cuttings from the bottom of the well, but there were no shows in the cores taken. The logs have displayed a water-bearing reservoir. The well was plugged and abandoned as a dry well.

TESTING:

No DST-tests were performed in this well.

GEOLOGICAL TOPS

WELL: 9/2-2

	Depth m (RKB)
<i>Nordland Group</i>	121,0
<i>Hordaland Group</i>	406,0
<i>Rogaland Group</i>	747,0
<i>Balder Fm</i>	747,0
<i>Sele Fm</i>	770,0
<i>Lista Fm</i>	778,0
<i>Maureen Fm</i>	795,0
<i>Shetland Group</i>	803,0
<i>Ekofisk Fm</i>	803,0
<i>Tor Fm</i>	873,0
<i>Hod Fm</i>	1161,0
<i>Blodøks Fm</i>	1425,0
<i>Hidra Fm</i>	1437,0
<i>Cromer Knoll Group</i>	1445,0
<i>Sola Fm</i>	1445,0
<i>Tuxen Fm</i>	1528,0
<i>Asgard Fm</i>	1772,0
<i>Boknfjord Group</i>	2381,0
<i>Flekkefjord Fm</i>	2381,0
<i>Sauda Fm</i>	2447,0
<i>Tau Fm</i>	2957,0
<i>Egersund Fm</i>	3062,0
<i>Vestland Group</i>	3123,0
<i>Sandnes Fm</i>	3123,0
<i>Bryne Fm</i>	3230,0
<i>Fjerritslev Fm</i>	3475,0
<i>Triassic Group</i>	3498,0
<i>Skagerak Group</i>	3498,0
<i>TD.</i>	3528,0