

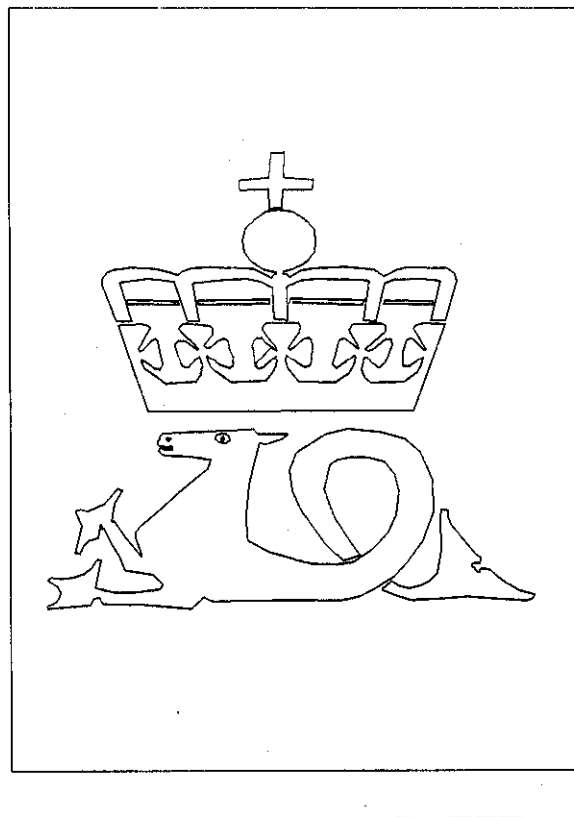
WELL NO: 6407/5-1

OPERATOR: MOBIL EXPLORATION NORWAY INC.

LICENSE NO: 121

TOTAL DEPTH: 4306 M RKB
KBE: 25 M
WATER DEPTH: 0 M

COORDINATES: 64°36'22.40"N/07°28'26.54"E
DATUM: ED50
SPUD CLASSIF.: WILDCAT
COMPL CLASSIF.: DRY HOLE

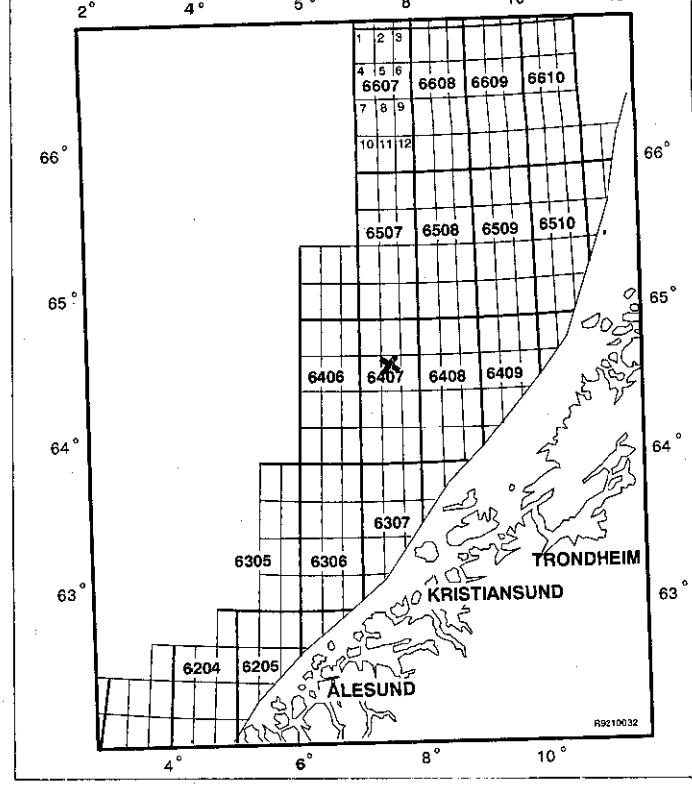


OLJEDIREKTORATET

SPUD DATE: 87.12.11
COMPL DATE: 88.03.04
RIG: TREASURE SCOUT

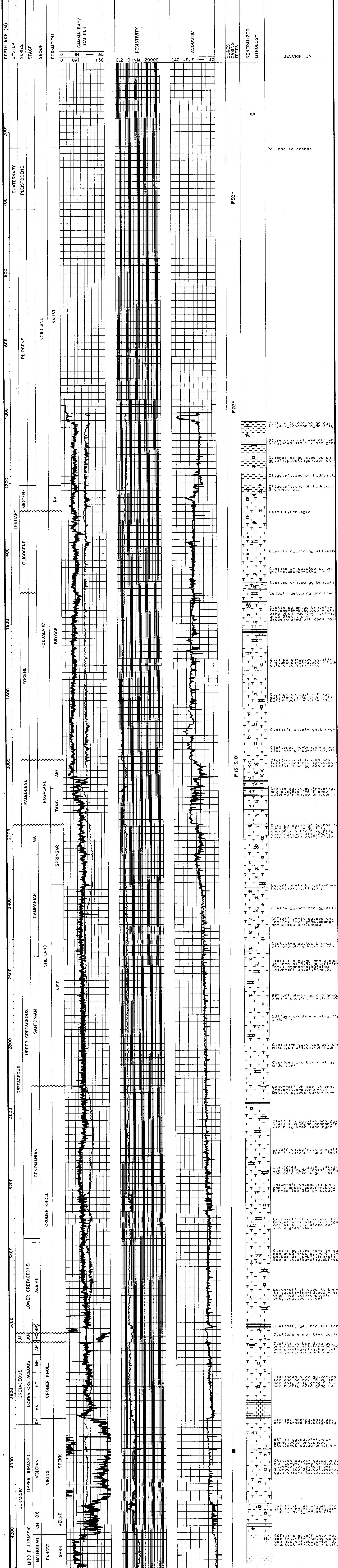
LICENSE GROUP:
BRITIL NORGE A/S 10.000 %
NORSK HYDRO PRODUKSJON A.S. 20.000 %
MOBIL DEVELOPMENT NORWAY A.S. 20.000 %
DEN NORSKE STATS OLJESELSKAP A.S. 50.000 %

LOCATION MAP



COMPLETION LOG

scale 1: 4000



Returns to seabed

20"

15 5/8"