

Well no : 35/11-01

Operator : MOBIL

Coordinates	: 61 10 59.27 N 03 39 44.95 E	UTM coord.	: 6783527 N
		UTM zone 31	: 535626 E
Licence no	: 090	Permit no	: 417
Rig	: NORTRYM	Rig type	: SEMI-SUB.
Contractor	: GOLAR-NOR OFFSHORE A/S		
Bottom hole temperature	: 95 deg.C	Elev. KB	: 25 M
Spud date	: 84.05.24	Water depth	: 365 M
Compl. date	: 84.08.06	Total depth	: 3361 M
Spud class.	: WILDCAT	Age at TD	: TRIASSIC
Compl. class.	: P&A. DRY HOLE		
Seis. loc.	: SG 8043 - 205 SP. 2360		

LICENSEES

10.000	NORSK HYDRO PRODUKSJON A.S
40.000	MOBIL EXPLORATION NORWAY INC.
50.000	DEN NORSKE STATS OLJESELSKAP A.S

CASING AND LEAK-OFF TESTS

Type	Casing diam.	Depth below KB	Hole diam.	Hole depth below KB	Lot mud eqv. g/cm ³
CONDUCTOR	30	506.5	36	510.0	
SURF.COND.	20	1002.5	26	1015.0	1.38
INTERM.	13 3/8	2026.0	17 1/2	2029.0	1.80
INTERM.	9 5/8	2426.0	12 1/4	2439.5	1.65
OPEN HOLE			8 1/2	3361.0	

CONVENTIONAL CORES

Core no.	Intervals cored meters	Recovery		Series
		M	%	
1	2552.8 - 2562.8	9.3	93.0	MIDDLE JURASSIC

MUD PROPERTIES

Depth below KB meter	Mud weighth g/cm ³	Plastic viscosity mPa.s	Mud type
800.0	1.08	5.0	WATER BASED
1050.0	1.21	11.0	WATER BASED
1260.0	1.22	14.0	WATER BASED
1500.0	1.27	28.0	WATER BASED
1820.0	1.29	23.0	WATER BASED
1885.0	1.32	28.0	WATER BASED
2060.0	1.45	24.0	WATER BASED
2230.0	1.56	34.0	WATER BASED
2310.0	1.57	36.0	WATER BASED
2360.0	1.56	37.0	WATER BASED
2460.0	1.50	21.0	WATER BASED
2510.0	1.56	26.0	WATER BASED
2685.0	1.45	22.0	WATER BASED
2770.0	1.42	21.0	WATER BASED
2880.0	1.35	15.0	WATER BASED
2990.0	1.32	15.0	WATER BASED
3100.0	1.33	27.0	WATER BASED

DRILL STEM TEST

NO DST'S WERE PERFORMED IN THIS WELL

DRILL BIT CUTTINGS AND WET SAMPLES

SAMPLE TYPE	INTERVAL BELOW KB	NUMBER OF SAMPLES
CUTTINGS	510 - 3361	850
WET SAMPLES	510 - 3361	525

SHALLOW GAS

INTERVAL BELOW KB	REMARKS
----------------------	---------

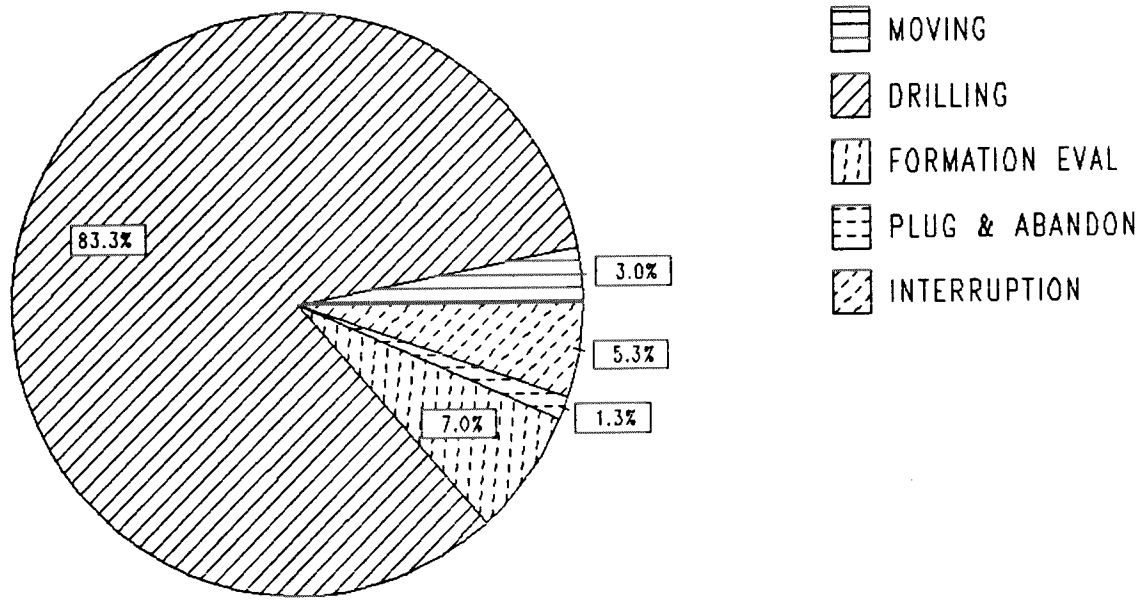
NONE

AVAILABLE LOGS

LOG TYPE	INTERVALS	1/200	1/500
ISF LSS GR	506 - 1013	X	X
ISF LSS	1004 - 2027	X	X
ISF LSS	2027 - 2438	X	X
ISF LSS MSFL	2427 - 3362	X	X
LDL	1004 - 2026	X	X
LDL CNL	2027 - 2436	X	X
LDL CNL NGS	2427 - 3362	X	X
CDM AP	2027 - 2450	X	X
CDM AP	2430 - 3090	X	X
SHDT	2027 - 2438	X	
SHDT	2427 - 3363	X	
NGS SPECTR.	2427 - 3362	X	X
TEMPERATURE	380 - 2010	1:100	
HRT	380 - 2390	1:100	
RFT HP	2113 - 2276	X	
RFT HP GAUGE	2469 - 3242	1:100	
MUD	386 - 3361		X
VELOCITY	506 - 3362		X
(+ Synthetic Seismogram, 10 cm/s,			2 stk)
(+ V.S.P., 10 cm/s,			13 stk)

DAILY DRILLING REPORT SYSTEM

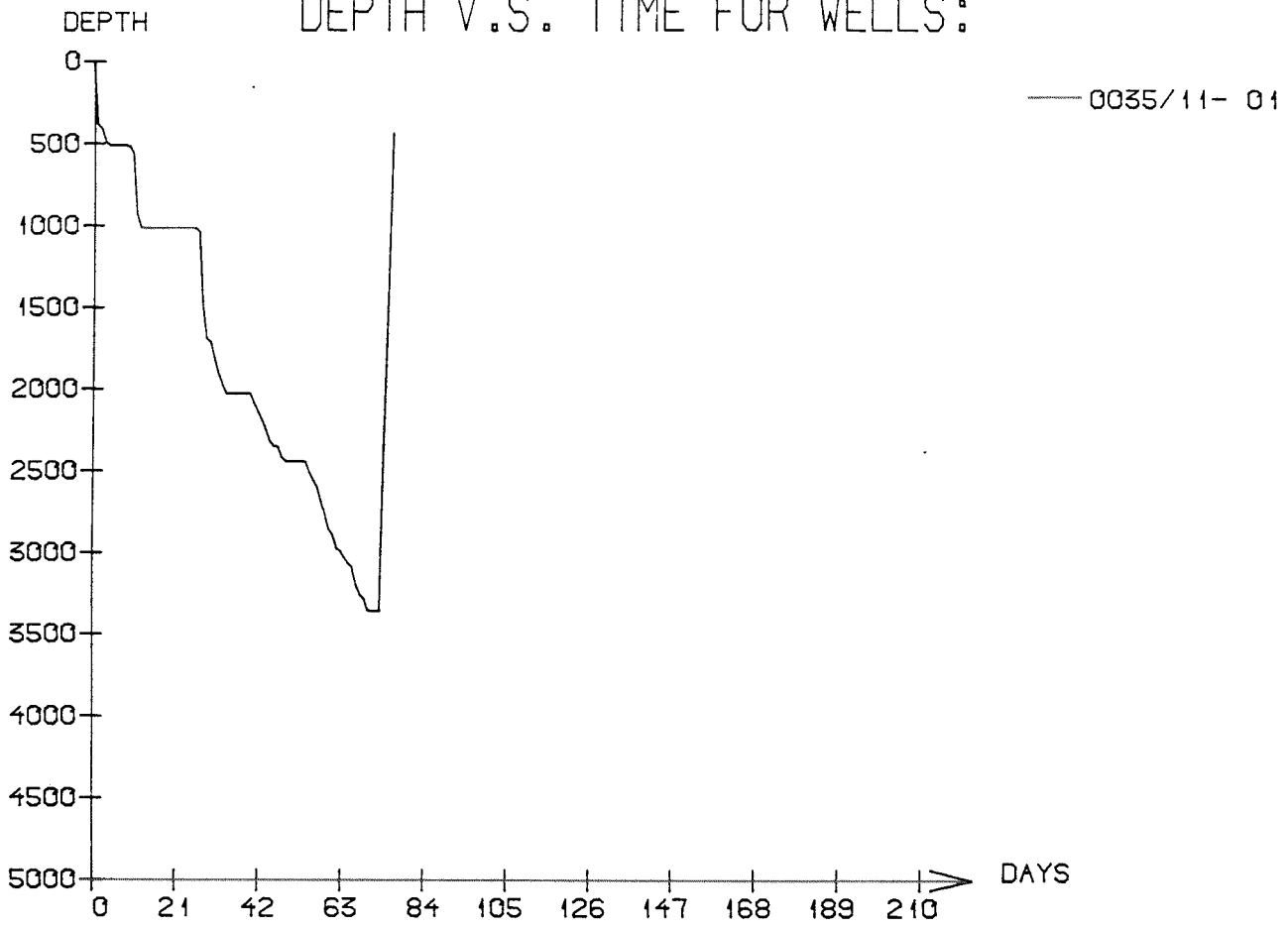
Main operation : 35/11-01



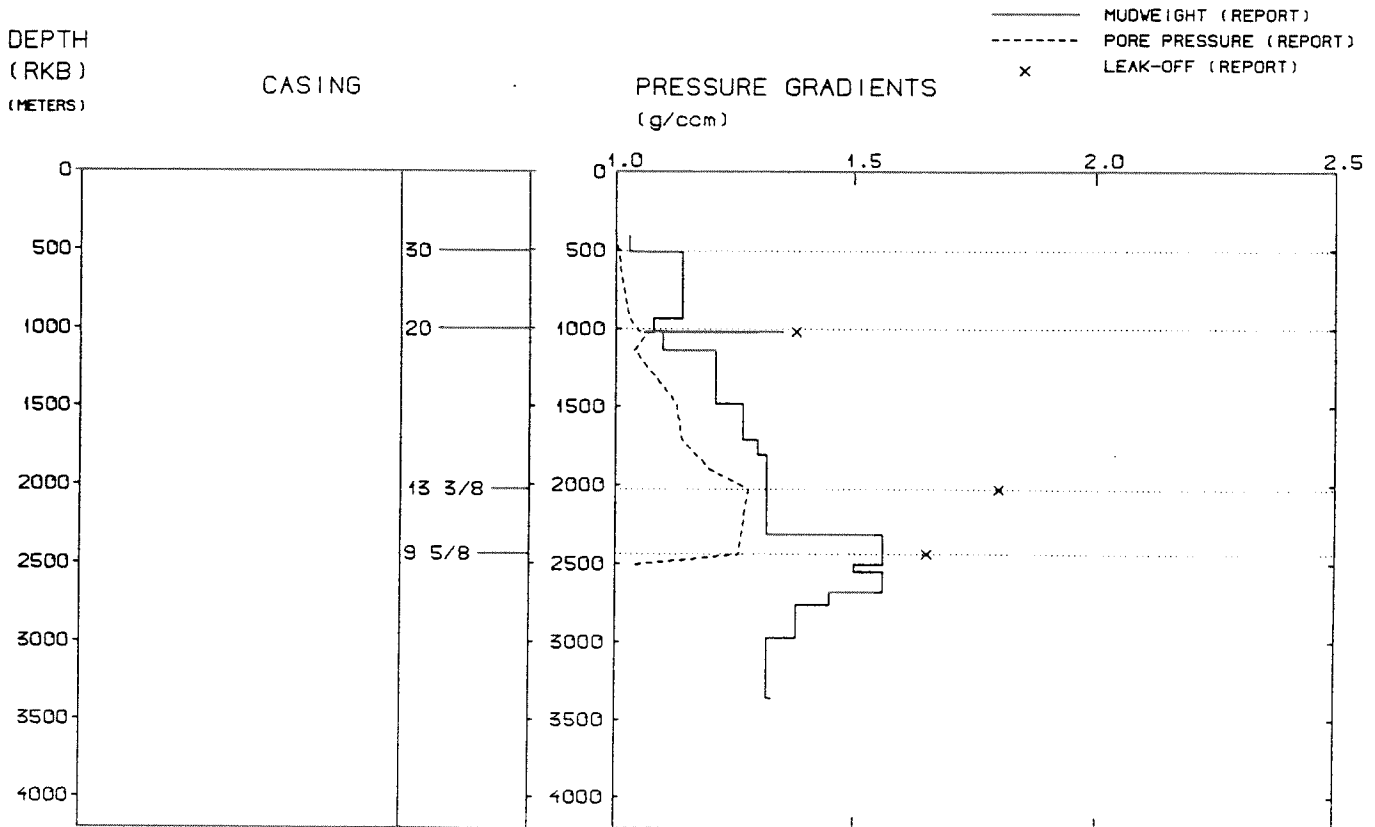
Total : 1872,00 HRS

Main operation	Hours	% of total
MOVING	57,50	3,07
DRILLING	1558,50	83,25
FORMATION EVAL	131,50	7,02
PLUG & ABANDON	25,00	1,34
INTERRUPTION	99,50	5,32

DEPTH V.S. TIME FOR WELLS:



WELL: 003511 01 PRESSURE COMPOSITE PLOT



WELL HISTORY - 35/11-1

GENERAL:

The primary objective of the wildcat 35/11-1 was to penetrate all potential productive horizons in the Jurassic, and to penetrate the Triassic. No hydrocarbon bearing intervals were encountered by this well.

OPERATIONS:

The well was spudded 24.05.84 by the semi-submersible rig Nortrym. One core was cut in the Middle Jurassic Brent group. The 36" hole section was drilled through boulder beds causing the bit to build angle. Because of high deviation the well was re-spudded. After drilling the 26" hole, the well flowed several times. Although the well would not stay static, it was decided to run the 20" casing in an attempt to seal off the water flow. This resulted in the 20" casing parting at the wellhead, and was successfully recovered. After reaming some tight spots the 20" casing was set and cement was squeezed to seabed to stop the water flow in annulus. Some tight spots were experienced in the 17 1/2" and 12 1/4" hole sections. Lost circulation occurred at 2439 m, due to this the 9 5/8" casing was run. The well was drilled using water based mud.

TESTING:

No DST's were performed in the well.

GEOLOGICAL TOPS

WELL: 35/11-01

Depth m (RKB)

<i>Nordland Group</i>	385.000
<i>Utsira Fm</i>	547.500
<i>Rogaland Group</i>	1307.000
<i>Balder Fm</i>	1307.000
<i>Sele Fm</i>	1367.000
<i>Lista Fm</i>	1453.500
<i>Våle Fm</i>	1738.500
<i>Shetland Group</i>	1765.000
<i>Viking Group</i>	2018.000
<i>Upper Heather Fm</i>	2018.000
<i>Fensfjord Fm</i>	2113.000
<i>Middle Heather Fm</i>	2180.000
<i>Krossfjord Fm</i>	2233.000
<i>Lower Heather Fm</i>	2284.000
<i>Brent Group</i>	2469.000
<i>Ness Fm</i>	2469.000
<i>Etive Fm</i>	2534.000
<i>Rannoch Fm</i>	2556.500
<i>Dunlin Group</i>	2583.000
<i>Drake Fm</i>	2583.000
<i>Cook Fm</i>	2647.500
<i>Amundsen Fm</i>	2684.000
<i>Johansen Fm</i>	2764.000
 <i>Statfjord Fm</i>	2995.000
<i>Hegre Group</i>	3264.500
 <i>TD =</i>	3361.000