



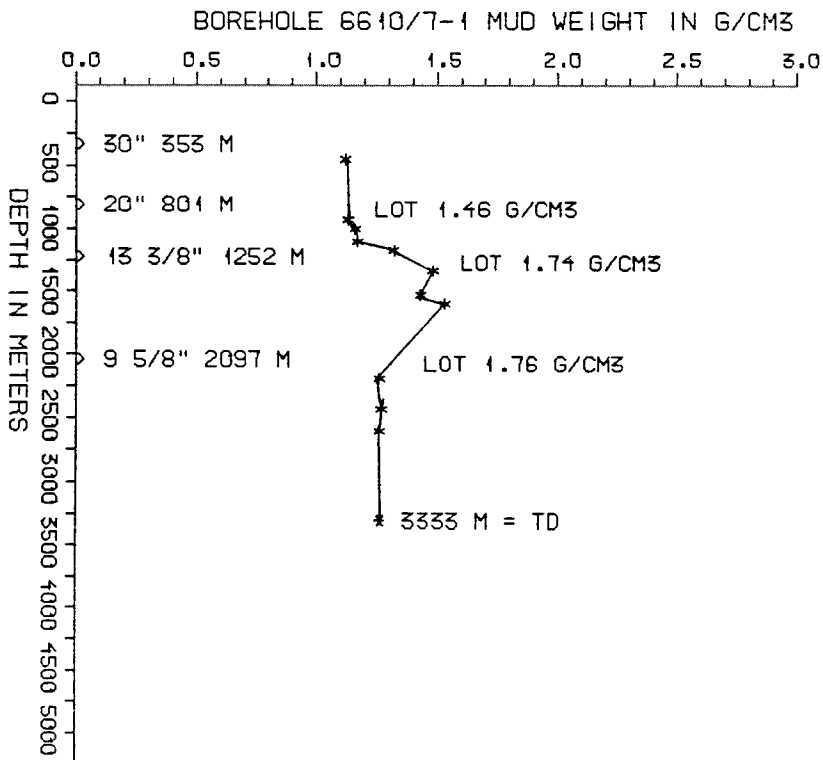
DRILL STEM TEST									
TEST NO	DEPTH BELOW KB	CHOKE SIZE mm	RECOVERY					PRESS. (psi)	
			OIL Sm <sup>3</sup> /d	GAS M Sm <sup>3</sup> /d	OIL GRAV. g/cm <sup>3</sup>	GAS GRAV. rel. air	GOR m <sup>3</sup> /m <sup>3</sup>	WHFP	BHFP
	NONE								

AVAILABLE LOGS			
LOG TYPE	INTERVALS	1/200	1/500
ISF BHC GR	353 - 813	X	
ISF BHC	801 - 1258	X	
ISF BHC	1251 - 2116	X	
ISF BHC MSFL	2098 - 2921	X	
ISF BHC MSFL	2915 - 3328	X	
ISF BHC LDL CNL	353 - 3328		X
LDL	353 - 814	X	X
LDL	801 - 1259	X	X
LDL	1251 - 2108	X	X
LDL CNL NGS	2098 - 3329	X	X
CDM	801 - 1260	X	
CDM	1251 - 1920	X	
CDM AP	802 - 1255	X	X
CDM AP	1251 - 1920	X	X
SHDT	2098 - 3329	X	
NGT PLAYBACK	2650 - 3329	X	
NGT RATIO PLAYBACK	2650 - 3329	X	
RFT	1294 - 1304	1:100	
RFT	2659 - 2110	1:100	
CBL VDL	550 - 1245	X	
CBL VDL	290 - 2092	X	
MUD	353 - 3333		X
VELOCITY (SEISM. CALIBR.)	353 - 3330	1:1000	X
(VSP	480 - 3330		1 stk)

MUD PROPERTIES			
DEPTH BELOW KB m	WEIGHT g/cm <sup>3</sup>	PLAST. VISC. mPa.s	FILTRATE LOSS cm <sup>3</sup>
400	1.09	11	
815	1.10	6	
900	1.13	6	
1030	1.14	12	
1125	1.29		
1260	1.45	13	
1460	1.40	17	
1550	1.50	18	
2125	1.23	11	
2325	1.24	16	
2550	1.23	16	

DRILL BIT CUTTINGS AND WET SAMPLES		
SAMPLE TYPE	INTERVAL BELOW KB	NUMBER OF SAMPLES
CUTTINGS	355-3333	700
WET SAMPLES	360-3332	672

SHALLOW GAS	
DEPTH INTERVAL m KB	REMARKS
	NONE



## WELL HISTORY - 6610/7-1

### GENERAL:

The purpose of wildcat 6610/7-1 was mainly to gather information about the hydrocarbon potential and stratigraphy of the Helgeland Basin. The main objectives of the well were sandstones of Middle to Lower Jurassic age. The well was water bearing but hydrocarbon shows were observed on cores and cuttings in Lower Jurassic sandstone beds.

### OPERATIONS:

The well was spudded 18.04.83 by the semi-submersible rig Nordraug. Four cores were cut, one from the Lower Cretaceous sequence and three from the Lower Jurassic sands. No major problems occurred during drilling. The well was drilled using waterbased mud.

### TESTING:

The well was not tested.

GEOLOGICAL TOPS  
WELL 6610/7-1

	Depth m (RKB)
Nordland Group	290,0
Naust Fm	290,0
Hordaland Group	952,0
Brygge Fm	952,0
Rogaland Group	1121,0
Tare Fm	1121,0
Tang Fm	1250,0
Shetland Group	1335,0
Cromer Knoll Group	1620,0
Lange Fm	1620,0
Viking Group	2272,0
Spekk Fm	2272,0
Melke Fm	2315,0
Fangst Group	2606,0
Not Fm	2606,0
Ile Fm	2657,0
Båt Group	2679,0
Ror Fm	2679,0
Tilje Fm	2745,5
Åre Fm	2855,0
Triassic	3153,0
Grey Beds	3153,0
Red Beds	3237,0
TD=	3333,0