

**WELL NO: 34/10-33**

OPERATOR: STATOIL  
 LICENSE NO: 050

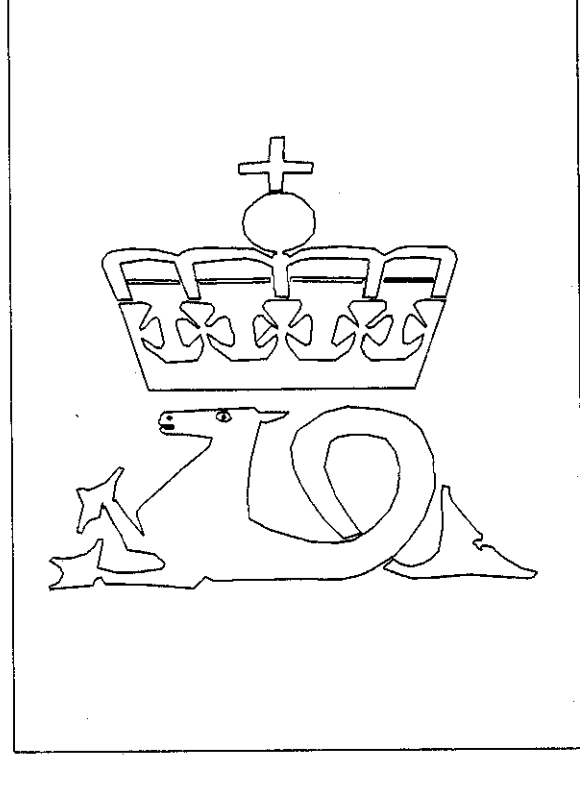
TOTAL DEPTH: 3872 M RKB  
 KBE: 29 M  
 WATER DEPTH: 134 M

COORDINATES: 61°07'34.44"N/02°12'57.10"E  
 DATUM: ED50  
 SPUD CLASSIF.: APPRAISAL  
 COMPL. CLASSIF.: OIL DISCOVERY

SPUD DATE: 88.09.25  
 COMPL. DATE: 88.12.15  
 RIG: WEST DELTA

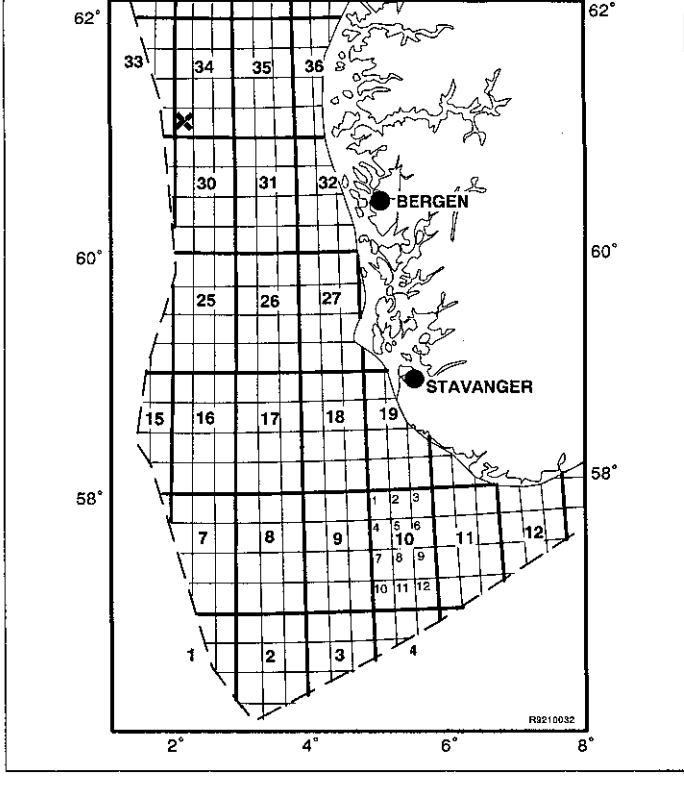
LICENSE GROUP:

NORSK HYDRO PRODUKSJON A.S. 9.000 %  
 SAGA PETROLEUM A.S. 6.000 %  
 DEN NORSKE STATS OLJESELSKAP A.S. 85.000 %



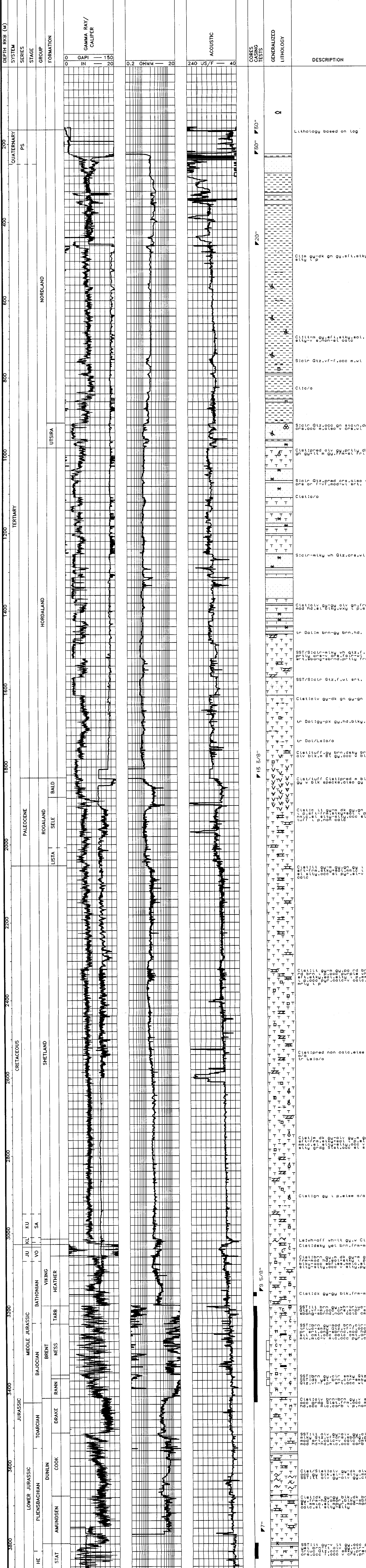
OLJEDIREKTORATET

LOCATION MAP



**COMPLETION LOG**

scale 1: 4000



DEPTH RKB (M)  
 200  
 400  
 600  
 800  
 1000  
 1200  
 1400  
 1600  
 1800  
 2000  
 2200  
 2400  
 2600  
 2800  
 3000  
 3200  
 3400  
 3600  
 3800

SYSTEM  
 QUATERNARY  
 PS

SERIES  
 TERTIARY  
 NORDLAND  
 UTSIRA  
 HORDALAND

STAGE  
 PALEOCENE  
 ROGALAND  
 SELE  
 LISTA  
 BALD

GROUP  
 JURASSIC  
 LOWER JURASSIC  
 AMUNDSEN  
 DUNLIN  
 COOK  
 TOARCIAN  
 DRAKE  
 RANN  
 NESS  
 BRENT  
 MIDDLE JURASSIC  
 BATHONIAN  
 VIKING  
 HEATHER  
 UPPER JURASSIC  
 JU  
 KU  
 SA

FORMATION  
 GAMMA RAY/  
 CALIPER  
 0 GAPI 150  
 0 IN 20

ACoustic  
 0.2 OHMM 20  
 240 US/F 40

CORES TESTS  
 20 40

GENERALIZED LITHOLOGY  
 20 40

DESCRIPTION  
 Lithology based on log  
 Cl:lt m gy, sft, stky, sol.  
 stly v g, non-sl oalc  
 S:cln Qtz, vf-f, oca m, wt  
 Cl:lt o  
 S:cln Qtz, oca, gn stn, do  
 or, oca m, also v oca, vt  
 Cl:lt pred olv gy, prtlly dk  
 gn gy, lt m gy, f, mat, f, t  
 S:cln Qtz, pred oca, also v  
 or, or f, vf, mod, vt, srt  
 Cl:lt o  
 S:cln m, lky, wh Qtz, oca, vt  
 Cl:lt olv gy, gy olv gn, frm  
 mod, nd, st, blk, v, x, t, p, srt  
 tr Dat: m brn-gy, brn, hd.  
 SST: S:cln m, lky, wh Qtz, f,  
 prtlly oca-v, oca, f, oca, vt,  
 srt, s, oca, brn, mod, prtlly, frm  
 SST: S:cln Qtz, f, vt, srt  
 Cl:lt olv gy, dk gn, gn  
 tr Dat: gy, pk gy, hd, blk, v  
 tr Dat: Leto/o  
 Cl:lt tu, gy, brn, oca, vt  
 olv, blk, v, srt, oca, vt  
 Cl:lt tu, gy, Cl:lt pred m, bl  
 o, v, blk, srt, oca, vt  
 Cl:lt m, lt, gy, m, dk, gy, gn, o  
 v, blk, f, r, m, stky, srt, oca, vt  
 tu, f, p, r, oca, vt  
 Cl:lt lt, gy, m, gn, do, nd, brn  
 srt, r, m, srt, oca, vt, oca, vt  
 srt, oca, vt, oca, vt, oca, vt  
 srt, oca, vt, oca, vt, oca, vt  
 Cl:lt pred non oca, elee  
 o, f, Leto/o  
 Cl:lt m, dk, gy, o, v, gy, m, gy,  
 srt, r, m, srt, oca, vt, oca, vt  
 srt, oca, vt, oca, vt, oca, vt  
 srt, oca, vt, oca, vt, oca, vt  
 Cl:lt gn, l, p, srt, oca, vt  
 Let:vh-off, wh-lt, gy, v, Cl:lt  
 Cl:lt dsky, vel, brn, frm, mod  
 Cl:lt brn, gy, m, dk, gy, m, gy,  
 frm, mod, nd, srt, oca, vt, oca, vt  
 blk, oca, vt, srt, oca, vt, oca, vt  
 srt, oca, vt, oca, vt, oca, vt  
 SST: lt, brn, gy, wh-tr, luo, vt  
 srt, v, r, m, oca, vt, srt, oca, vt  
 srt, oca, vt, srt, oca, vt, oca, vt  
 SST: brn, gy, o, r, smky, Qtz  
 SST: id, vt, brn, srt, oca, vt, srt  
 Cl:lt olv, gn, brn, gy, v, srt, oca, vt  
 oca, vt, srt, oca, vt, srt, oca, vt  
 SST: lt, olv, gy, o, v, gy, o, r, m  
 srt, oca, vt, srt, oca, vt, oca, vt  
 mod, srt, oca, vt, oca, vt, oca, vt  
 mod, nd, srt, oca, vt, oca, vt  
 Cl:lt S:cln olv, gy, dk, olv, gy  
 oca, vt, blk, srt, oca, vt, srt, oca, vt  
 SST: vt, olv, gy, o, v, srt, oca, vt  
 Cl:lt dk, gy, o, v, blk, dk, brn  
 gy, frm, mod, nd, srt, oca, vt, oca, vt  
 oca, vt, srt, oca, vt, oca, vt  
 oca, vt, srt, oca, vt, oca, vt  
 SST: lt, olv, gy, vt, srt, oca, vt, oca, vt  
 srt, oca, vt, srt, oca, vt, oca, vt  
 srt, oca, vt, srt, oca, vt, oca, vt