

Well no : 7121/ 4-01

Operator : STATOIL

Coordinates	: 71 35 59.68 N 21 09 22.79 E	UTM coord.	: 7944529 N UTM zone 34 505507 E
Licence no	: 099	Permit no	: 428
Rig	: WEST VANGUARD	Rig type	: SEMI-SUB.
Contractor	: A/S SMEDVIK DRILLING CO.		
Bottom hole temperature	: 65 deg.C	Elev. KB	: 22 M
Spud date	: 84.08.06	Water depth	: 335 M
Compl. date	: 84.10.27	Total depth	: 2609 M
Spud class.	: WILDCAT	Age at TD	: TRIASSIC
Compl. class.	: P&A. OIL/GAS/COND.		
Seis. loc.	: ST 8310 - 369 SP. 1083		

LICENSEES

10.000	CONOCO NORWAY INC.
10.000	NORSK HYDRO PRODUKSJON A.S
50.000	DEN NORSKE STATS OLJESELSKAP A.S
30.000	TOTAL MARINE NORSK A/S

CASING AND LEAK-OFF TESTS

Type	Casing diam.	Depth below KB	Hole diam.	Hole depth below KB	Lot mud eqv. g/cm ³
-----	-----	-----	-----	-----	-----
CONDUCTOR	30	419.0	36	425.0	
SURF.COND.	20	800.0	26	817.0	1.64
INTERM.	13 3/8	1330.0	17 1/2	1358.0	1.57
INTERM.	9 5/8	2259.0	12 1/4	2288.0	1.61
LINER	7	2584.0	8 1/2	2609.0	

CONVENTIONAL CORES

Core no.	Intervals cored meters	Recovery		Series
		M	%	
1	2321.0 - 2339.0	18.0	99.9	JURASSIC
2	2339.0 - 2366.0	27.0	99.9	JURASSIC
3	2366.0 - 2394.0	27.0	99.0	JURASSIC
4	2394.0 - 2416.0	22.0	99.9	JURASSIC

MUD PROPERTIES

Depth below KB meter	Mud weighth g/cm ³	Plastic viscosity mPa.s	Mud type
422.0	1.05	9.0	WATER BASED
428.0	1.04	6.0	WATER BASED
750.0	1.07	4.0	WATER BASED
815.0	1.05	5.0	WATER BASED
817.0	1.05	4.0	WATER BASED
887.0	1.10	14.0	WATER BASED
1086.0	1.12	17.0	WATER BASED
1120.0	1.13	19.0	WATER BASED
1358.0	1.20	18.0	WATER BASED
1445.0	1.27	20.0	WATER BASED
2073.0	1.30	16.0	WATER BASED
2107.0	1.30	16.0	WATER BASED
2165.0	1.34	16.0	WATER BASED
2285.0	1.39	15.0	WATER BASED
2394.0	1.38	19.0	WATER BASED
2587.0	1.30	20.0	WATER BASED

DRILL STEM TEST

INTERVALS AND PRESSURES

Test no.	Interval meter	Choke size	Pressure (PSI)		
			FSIP	BTHP	WHP
1.0	2504.2 - 2497.6	25.4		3873.0	34.0
2.0	2471.9 - 2465.9	19.1		3774.0	1325.0
3.0	2434.8 - 2419.8	12.7		3848.0	690.0
4.0	2385.0 - 2353.0	25.4		3794.0	1480.0

RECOVERY

Test no.	Oil Sm ³ /d	Gas M Sm ³ /d	Oil grav. g/cm ³	Gas grav. rel. air	GOR m ³ /m ³
1.0					
2.0	38*	503			
3.0	94	89	0.850	0.730	943
4.0	109*	846	0.760	0.700	7760

* - CONDENSATE

DRILL BIT CUTTINGS AND WET SAMPLES

SAMPLE TYPE	INTERVAL BELOW KB	NUMBER OF SAMPLES
CUTTINGS	430 - 2586	390
WET SAMPLES	430 - 2583	430

SHALLOW GAS

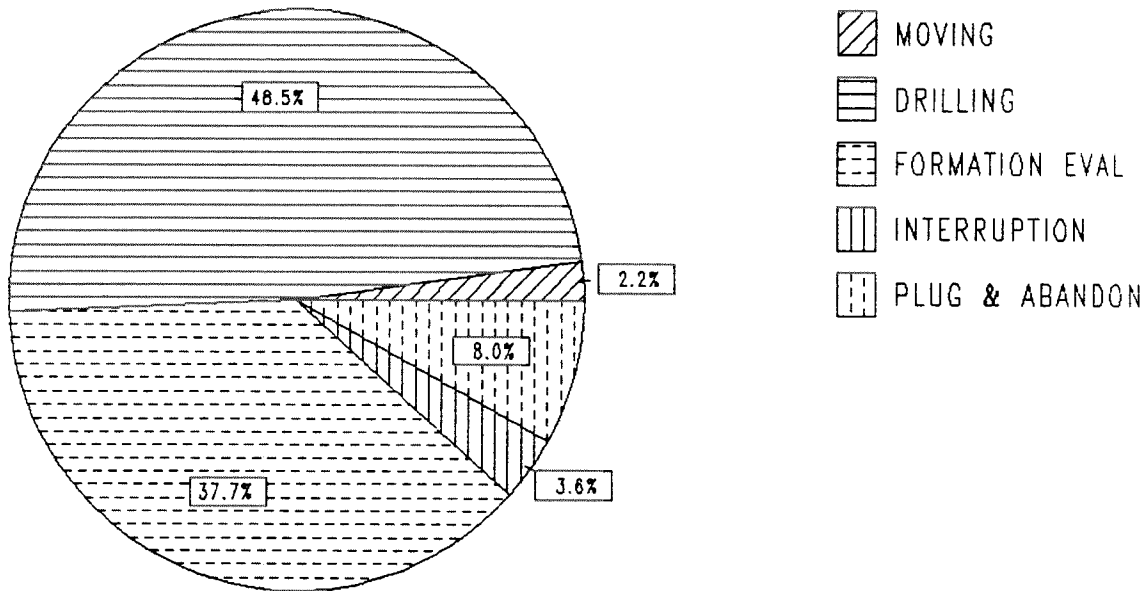
INTERVAL BELOW KB	REMARKS
	NONE

AVAILABLE LOGS

LOG TYPE	INTERVALS	1/200	1/500
ISF BHC GR	418 - 811	X	X
ISF BHC	811 - 1346	X	X
ISF BHC	1332 - 2272	X	X
ISF BHC MSFL	2259 - 2265	X	X
ISF BHC	2259 - 2585	X	X
LDL	418 - 812	X	X
LDL	812 - 1348	X	X
LDL	1332 - 2275	X	X
LDL CNL	2259 - 2585	X	X
DLL MSFL	2300 - 2578	X	X
CDM AP	805 - 1340	X	X
CDM AP	1331 - 2300	X	X
CDM AP	2250 - 2600	X	X
SHDT	800 - 1347	X	
SHDT	1332 - 2271	X	
SHDT	2258 - 2586	X	
NGS	2259 - 2576	X	X
RFT	2322 - 2559	1:100	
RFT	2412 - 2587	1:100	
CBL VDL	700 - 1330	X	
CBL VDL	1100 - 2520	X	
MUD	495 - 2587		X
VELOCITY	418 - 2585	1:1000	X
(+ Airgun Well Velocity Survey and Calibr. log data, 1 stk)			
(+ Synthetic Seismogram, Marine, 10 cm/s, 1 stk)			
(+ Synthetic Seismogram, Marine, 20 cm/s, 1 stk)			
(+ Synthetic Seismogram, 10 cm/s, 2 stk)			
(+ Synthetic Seismogram, 20 cm/s, 2 stk)			
(+ V.S.P., 10 CM/S, 14 stk)			

DAILY DRILLING REPORT SYSTEM

Main operation : 7121/04-01



Total : 2016.00 HRS

Main operation	Minutes	Hours	% of total
MOVING	2610	43.50	2.1
DRILLING	58710	978.50	48.5
FORMATION EVAL	45600	760.00	37.6
INTERRUPTION	4350	72.50	3.5
PLUG & ABANDON	9690	161.50	8.0

MAIN OPERATION: MOVING

Sub operations	Min	% of total
TRANSIT	570	21.84
ANCHOR	2010	77.01
JACK	30	1.15
TOTAL	2610	100.00

MAIN OPERATION: DRILLING

Sub operations	Min	% of total
OTHER	4169	7.10
TRIP	8850	15.07
DRILL	23130	39.40
SURVEY	1261	2.15
CIRC/COND	6030	10.27
CASING	6240	10.63
UNDERREAM	2970	5.06
BOP/WELLHEAD EQ	3480	5.93
BOP ACTIVITIES	930	1.58
REAM	1650	2.81
TOTAL	58710	100.00

MAIN OPERATION: FORMATION EVAL

Sub operations	Min	% of total
LOG	4555	9.99
TRIP	8043	17.64
CORE	2877	6.31
CIRC/COND	2310	5.07
OTHER	2310	5.07
RFT/FIT	815	1.79
DST	24540	53.82
WAIT	150	0.33
TOTAL	45600	100.00

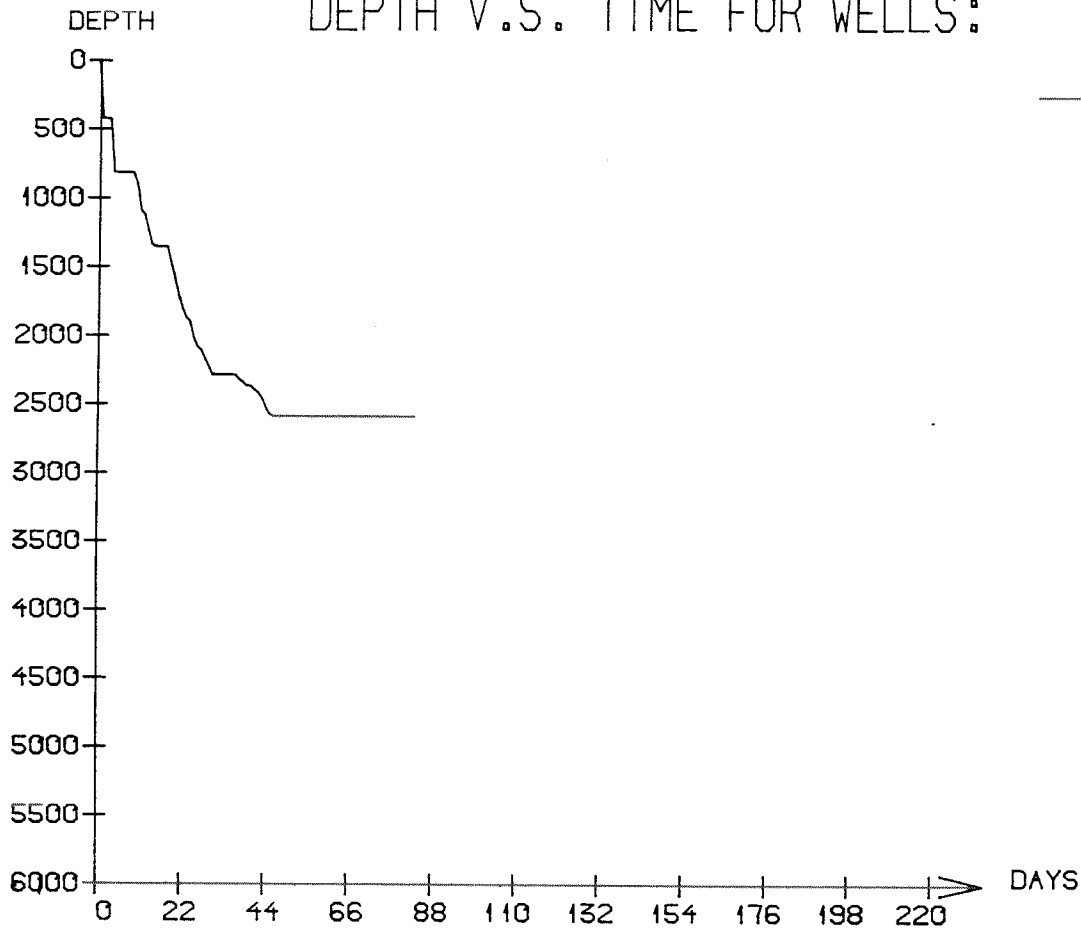
MAIN OPERATION: INTERRUPTION

Sub operations	Min	% of total
MAINTAIN/REP	1050	24.14
LOST CIRC	1980	45.52
OTHER	60	1.38
FISH	1260	28.97
TOTAL	4350	100.00

MAIN OPERATION: PLUG & ABANDON

Sub operations	Min	% of total
CEMENT PLUG	360	3.72
TRIP	2430	25.08
CIRC/COND	480	4.95
MECHANICAL PLUG	330	3.41
SQUEEZE	660	6.81
PERFORATE	420	4.33
CUT	1620	16.72
EQUIP RECOVERY	2760	28.48
OTHER	240	2.48
WAIT	390	4.02
TOTAL	9690	100.00

DEPTH V.S. TIME FOR WELLS:



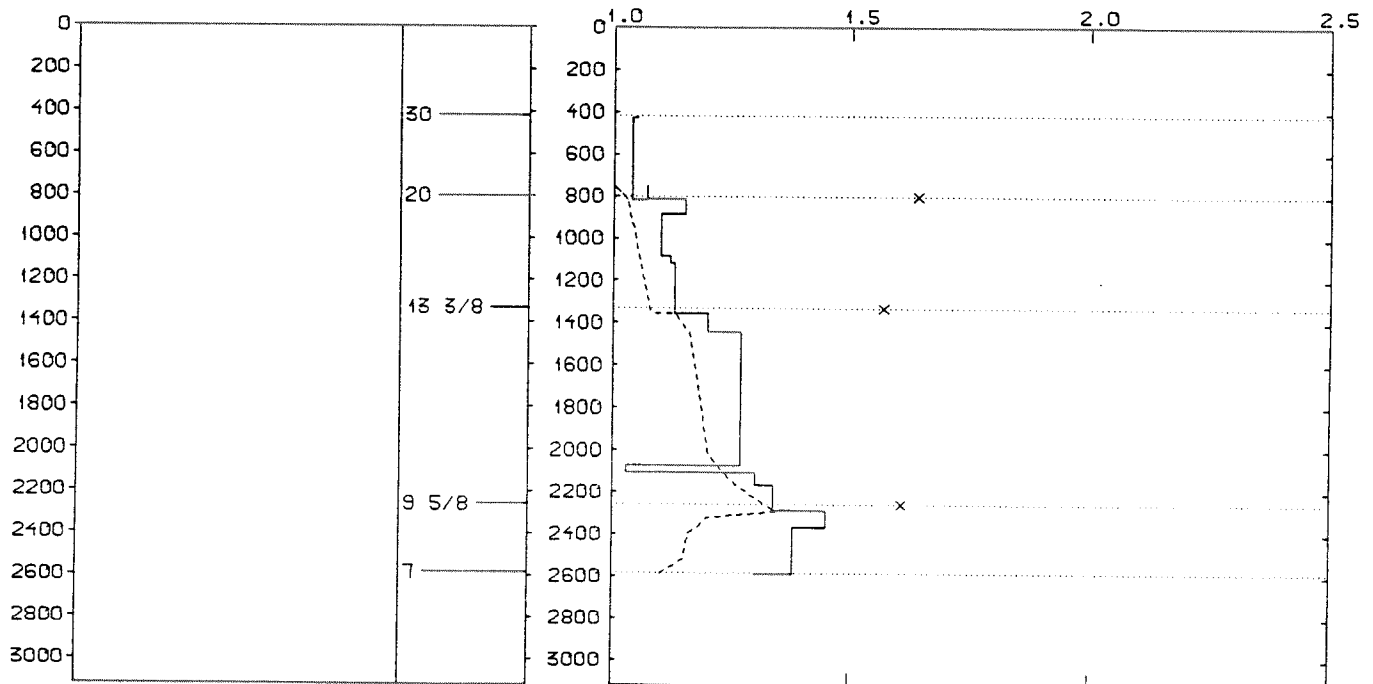
WELL: 712104 01 PRESSURE COMPOSITE PLOT

DEPTH
(RKB)
(METERS)

CASING

PRESSURE GRADIENTS
(g/ccm)

— MUDWEIGHT (REPORT)
 - - - PORE PRESSURE (REPORT)
 x LEAK-OFF (REPORT)



WELL HISTORY - 7121/4-1

GENERAL:

The primary objective of the wildcat 7121/4-1 was to test possible hydrocarbon accumulations in sandstones of Middle to Lower Jurassic age. Hydrocarbon accumulations were encountered in two separate sandstone intervals of Middle and Lower Jurassic age. The uppermost interval contained gas over oil, the lower was gas bearing.

OPERATIONS:

The well was spudded 06.08.84 by the semi-submersible rig West Vanguard. Four cores were cut in the Middle Jurassic down into the Lower Jurassic.

After cementing of the 30" casing, the riser and pin connector was run but the pin connector came loose due to high angle at the ball joint. The rig was repositioned to reconnect the pin connector.

In the 17 1/2" hole section mud was lost to formation in several intervals.

The pipe got stuck at 1706 m in the 12 1/4" hole section, but was rotated free. Loss of circulation occurred at 2285 m.

Problems occurred during cementing of the 9 5/8" casing due to a leak in a pump unit. A cement squeeze was performed.

Lost circulation occurred several times during drilling of 8 1/2" hole. The well was drilled using water based mud.

TESTING:

Four drill stem tests were performed in the Middle to Lower Jurassic sequence. DST no 1 was a water test, DST no 2 & 4 were gas tests, and DST no 3 was an oil test.

GEOLOGICAL TOPS

WELL: 7121/ 4-01

	Depth m (RKB)
<i>Nordland Group</i>	357.000
<i>Sotbakken Group</i>	440.000
<i>Torsk Fm</i>	440.000
<i>Nygrunnen Group</i>	1016.000
<i>Nordvestbanken Group</i>	1052.000
<i>Kolmule Fm</i>	1052.000
<i>Kolje Fm</i>	1817.000
<i>Knurr Fm</i>	2135.000
<i>Teistengrunnen Group</i>	2237.000
<i>Hekkingen Fm</i>	2237.000
<i>Fuglen Fm</i>	2306.500
<i>Realgrunnen Group</i>	2318.000
<i>Stø Fm</i>	2318.000
<i>Nordmela Fm</i>	2396.000
<i>Tubåen Fm</i>	2469.000
<i>Fruholmen Fm</i>	2533.000
 <i>TD =</i>	 2609.000