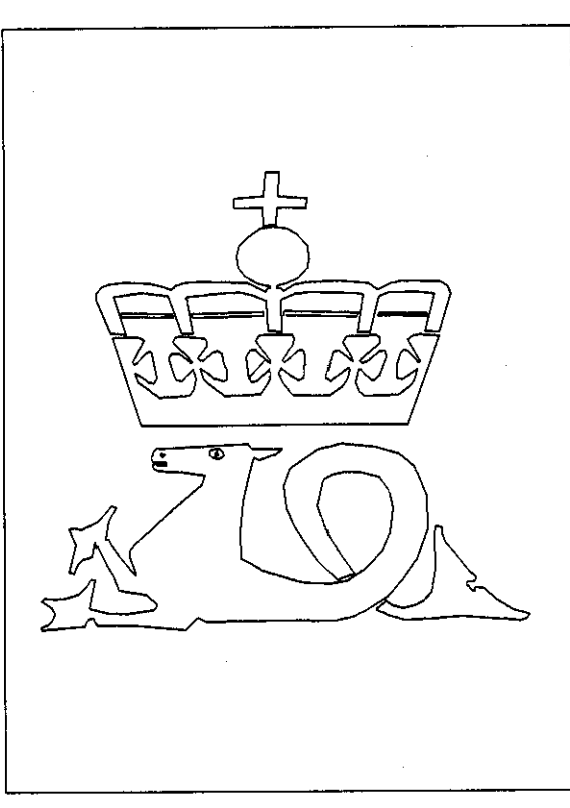


**WELL NO: 34/10-33C**

OPERATOR: STATOIL  
 LICENSE NO: 050

TOTAL DEPTH: 3753 M RKB  
 KBE: 23 M  
 WATER DEPTH: 134 M

COORDINATES: 61°07'34.44"N/02°12'57.10"E  
 DATUM: ED50  
 SPUD CLASSIF.: APPRAISAL  
 COMPL. CLASSIF.:

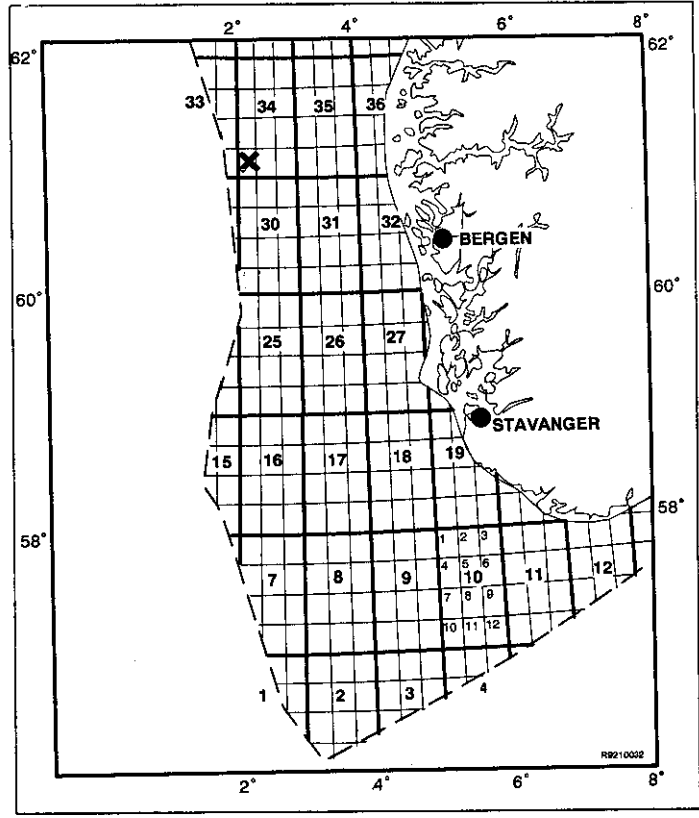


OLJEDIREKTORATET

SPUD DATE: 89.07.11  
 COMPL. DATE: 89.08.09  
 RIG: DEEPSEA BERGEN

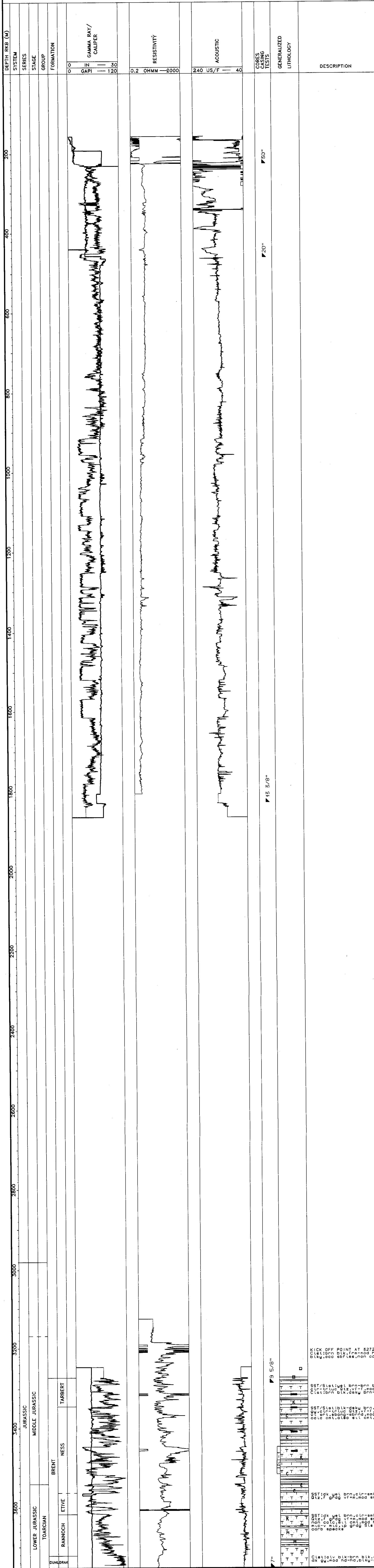
LICENSE GROUP:  
 NORSK HYDRO PRODUKSJON A.S 9.000 %  
 SAGA PETROLEUM A.S. 6.000 %  
 DEN NORSKE STATS OLJESELSKAP A.S 85.000 %

LOCATION MAP



**COMPLETION LOG**

scale 1: 4000



KICK OFF POINT AT 2272  
 Clet:brn blk./ra-mod nd.  
 blk./occ sb/ta,non cald.

SST:Stat:ugl brn-brn blk.  
 Clet:brn blk./ra-mod nd.  
 Clet:brn blk./dku brn-rd

SST:Stat:blk-dku brn-olv  
 Clet:brn blk./ra-mod nd.  
 Clet:brn blk./dku brn-rd

SST:dk vel brn-clr-smky  
 Clet:brn blk./ra-mod nd.  
 Clet:brn blk./dku brn-rd

SST:dk vel brn-clr-smky  
 Clet:brn blk./ra-mod nd.  
 Clet:brn blk./dku brn-rd

Clet:olv blk-brn blk-occ  
 dk/gy,mod ha-ha,blk/ebf.