

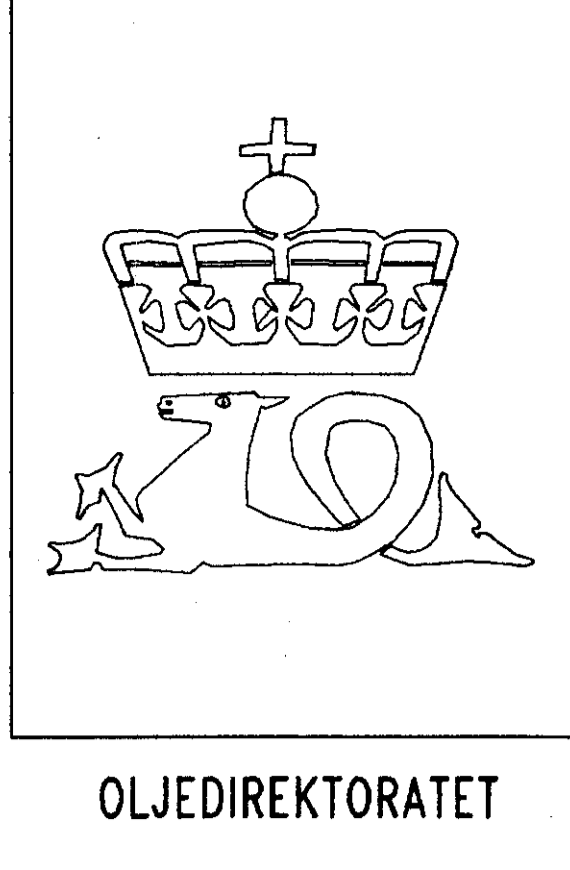
WELL NO: 6507/7-1
 OPERATOR: CONOCO NORWAY INC.
 LICENSE NO: 095

TOTAL DEPTH: 4825 M RKB
 KBE: 25 M
 WATER DEPTH: 367 M

COORDINATES: 65°27'16.73"N/07°12'52.77"E
 DATUM: ED50
 SPUD CLASSIF.: WILDCAAT
 COMPL. CLASSIF.: P&A. GAS DISCOVERY

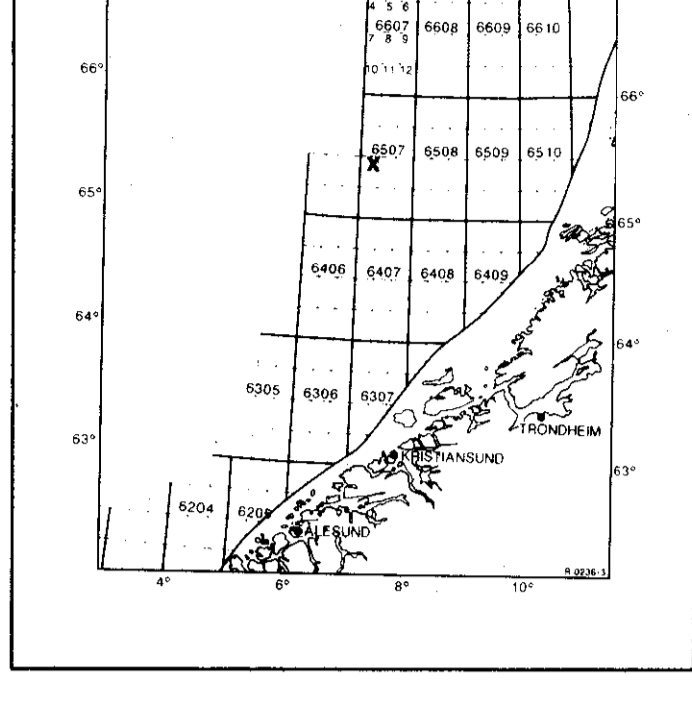
SPUD DATE: 84.08.10
 COMPL. DATE: 84.12.01
 RIG: NORTRYM

LICENSE GROUP:
 ARCO NORGE A/S 10.000 %
 CONOCO NORWAY INC. 30.000 %
 DEN NORSKE STATS OLJESKAP A.S 50.000 %
 TENNECO OIL NORWAY A/S 10.000 %



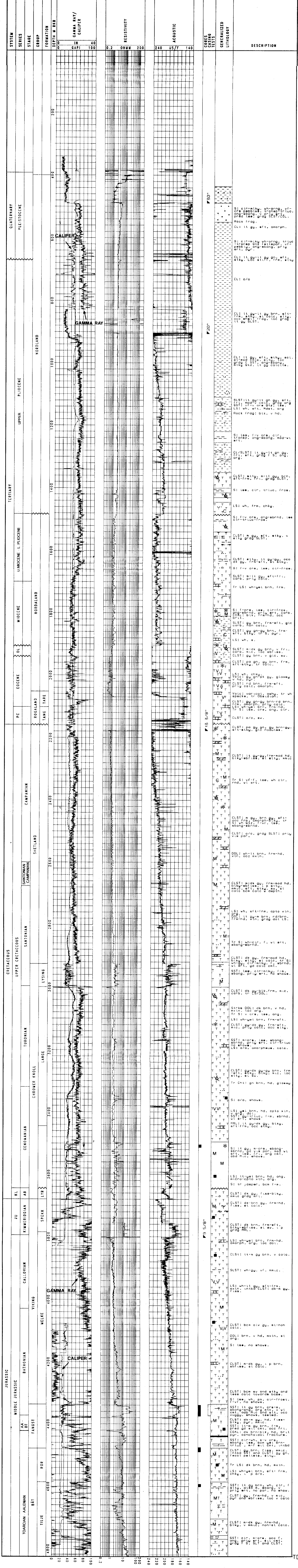
OLJEDIREKTORATET

LOCATION MAP



COMPLETION LOG

scale 1: 4000



T D