

WELL NO: 2/12-2S

OPERATOR: NORSK HYDRO PRODUKSJON A.S

LICENSE NO: 113

TOTAL DEPTH: 5757 M RKB

KBE: 22 M

WATER DEPTH: 70 M

COORDINATES: 56°13'54.28"N/03°42'16.63"E

DATUM: ED50

SPUD CLASSIF.: WLDCAT

COMPL. CLASSIF.: ENDED. SHOWS

SPUD DATE: 90.02.15

COMPL. DATE: 90.09.14

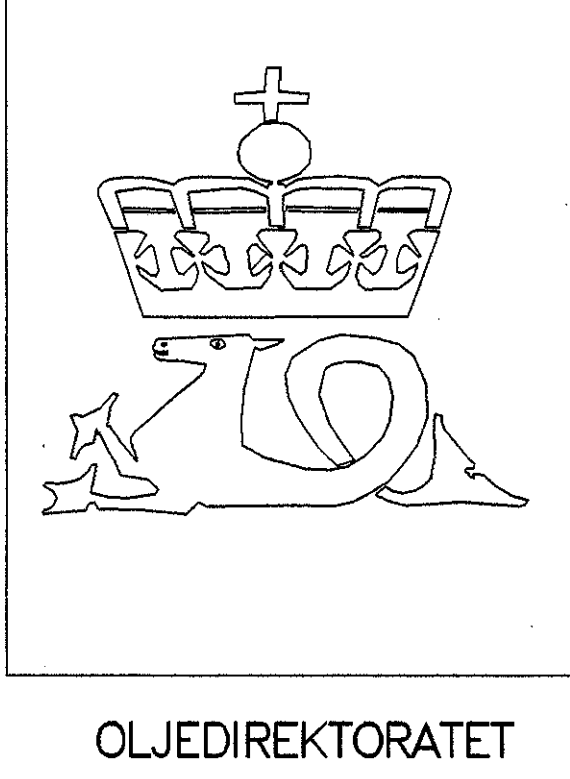
RIG: MÆRSK JUTLANDER

LICENSE GROUP:

AMERADA HESS NORGE A/S 25.000 %

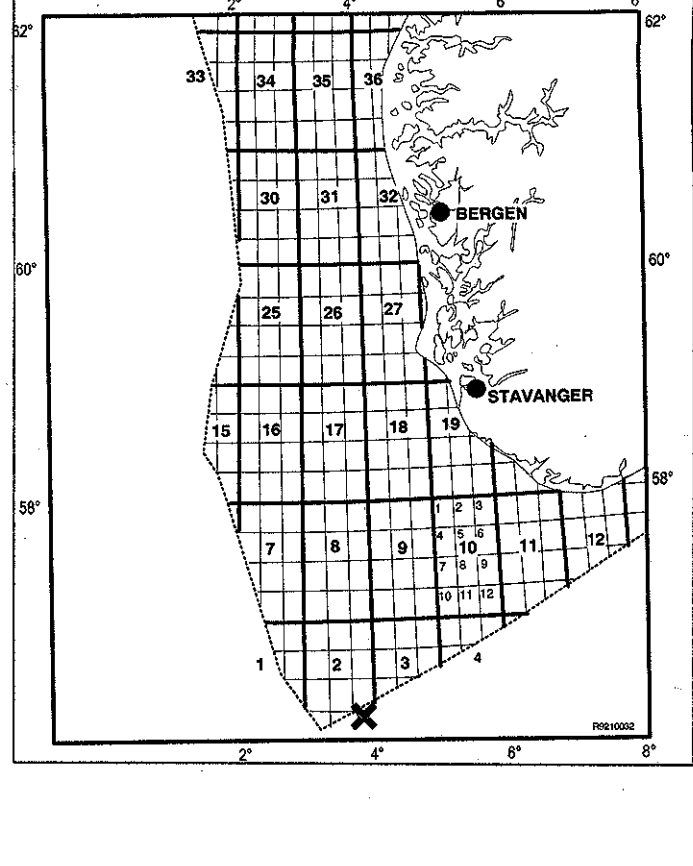
NORSK HYDRO PRODUKSJON A.S 25.000 %

DEN NORSKE STATS OLJESELSKAP A.S 50.000 %



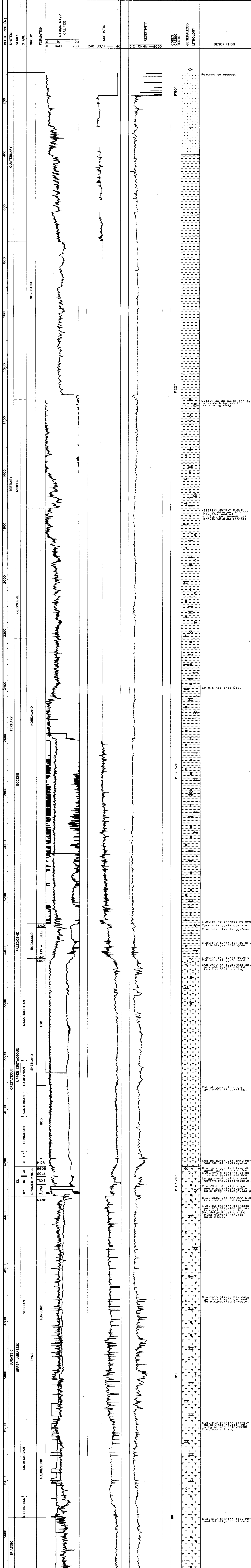
OLJEDIREKTORATET

LOCATION MAP



COMPLETION LOG

scale 1: 4000



Clstlv gndk gu dk gnn gu
 ofllolobkly non-to
 colc stly endy

Clstlv gndk gu dk gnn gu
 ofllolobkly non-to
 colc stly endy

Lasora loc grgd Del.

Clstlv gndk gu dk gnn gu
 ofllolobkly non-to
 colc stly endy

Clstlv gndk gu dk gnn gu
 ofllolobkly non-to
 colc stly endy

Clstlv gndk gu dk gnn gu
 ofllolobkly non-to
 colc stly endy

Clstlv gndk gu dk gnn gu
 ofllolobkly non-to
 colc stly endy

Clstlv gndk gu dk gnn gu
 ofllolobkly non-to
 colc stly endy

Clstlv gndk gu dk gnn gu
 ofllolobkly non-to
 colc stly endy

Clstlv gndk gu dk gnn gu
 ofllolobkly non-to
 colc stly endy