

WELL NO 25/11-1 OPERATOR ESSO

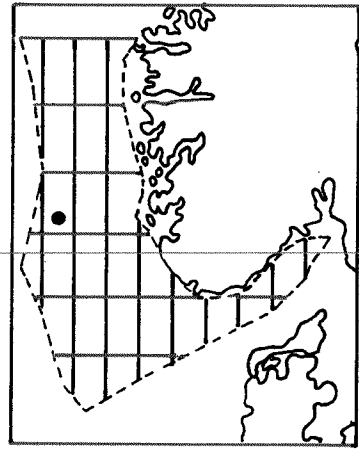
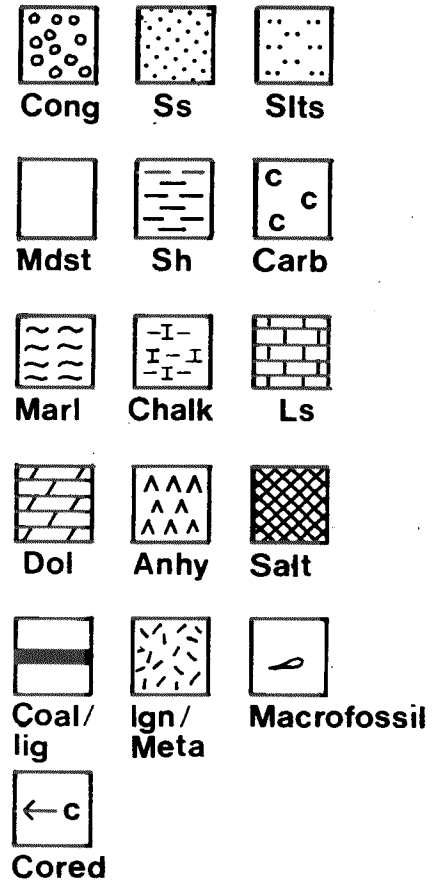
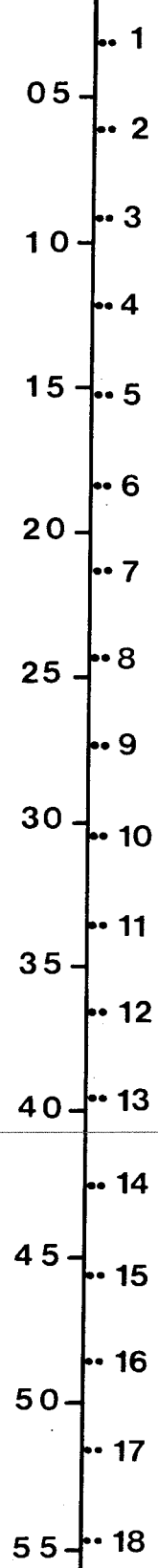
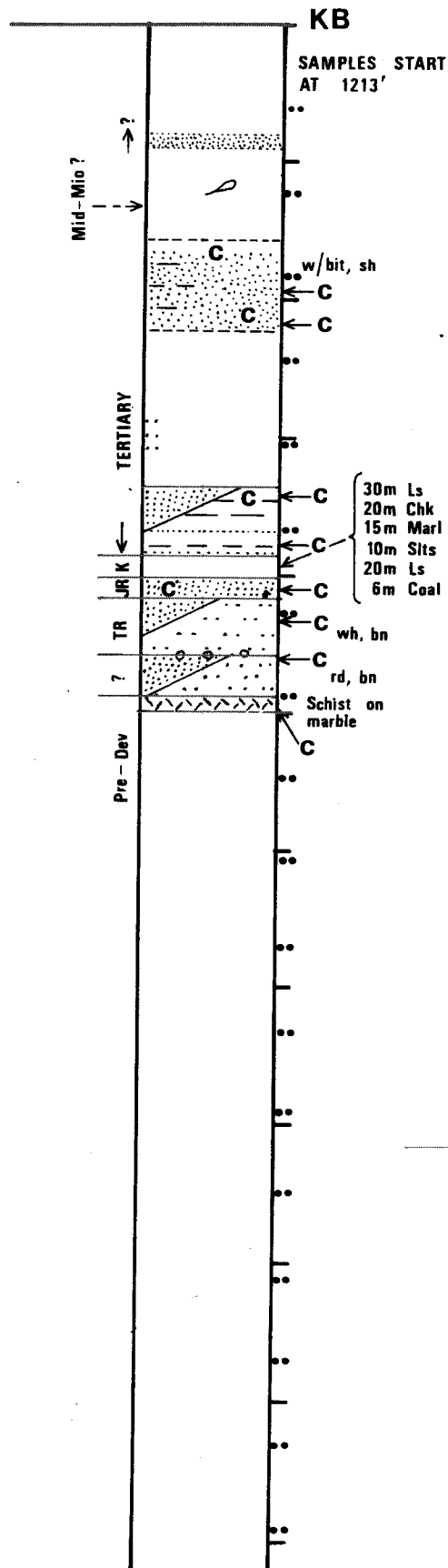
T.D. 2460 M

K.B. 27 M

W.D. 127 M

GENERALIZED GEOLOGY

DEPTH IN
100 m 1000 ft



1cm = 250 m
1cm = 820 ft

Nov. 1975

WELL ID: 25/11-1 COORDINATES: 59°10'53" N 02°24'49" E LICENSEE: Esso Exploration
 LICENSE NO: 001 KBE: 27M W D: 127 M PERMIT NO 2 PERMIT DATE 7.9.66 T D 2460 M
 OPERATOR: Esso Expl CONTRACTOR: Odeco Inc RIG: Ocean Traveler
 SPUD DATE 18.10.66 COMPLETION DATE 9.7.67 STATUS P + A BHT 71.1°C
 FMTN AT T D Pre-Devonian PROD FMTN PROD FMTN
 FIELD: CLASSIFICATION: New Field Wildcat

CASING RECORD

	DIA. INCH	DEPTH BELOW KB - METRES	HOLE SIZE DIA-INCH	DEPTH BELOW KB - METRES
SFC CGS	30	179	36	179
INT CGS	20	363	26	363
INT CGS	13 3/8	1233	17 1/2	1244
INT CGS				
INT CGS				
PROD CGS				

LOGS RUN

TYPE	INTERVAL METR.
IES	362-2462
LL-7	362-2459
MLL-C	362-2460
SGR-C	180-2457
FDC	610-2461
CDM	1232-2451
MUD	370-2459
CAL	1232-1718

CORES

NOS OF CORES	TOTAL METRES	REC METRES
14 Conventional	113 between 991.4 and 2460.0	88.6

DST AND WIRELINE TESTS

TYPE	INTERVAL METRES	REC	STATIC BHP	FFP	TEMP°C
FIT	1755.4	6 M cc o, 1 M m, 11.4 ft ³ g	2500	1900	
FIT	1777.1	7 M cc o, 1 M m, 18.9 ft ³ g	2600	2500	
FIT	2196.9	21 M cc w+m		3150	
FIT	2007.9	20 M cc w+m		2900	
FIT	1801.8	19 M cc w+m		2750	
FIT	1873.7	9 M cc w+m		2300	

DEVIATION

DEPTH METRES	DEG
694	2.25
785	2.75
991	2.75
1219	0.25
1471	0.50
1646	1.00
1806	0.25
2287	1.50
2339	1.20
2446	1.20

MISC: 9 FIT between 1713 - 1876 metres failed.
 Approx 4 months lost because of weather and other conditions.