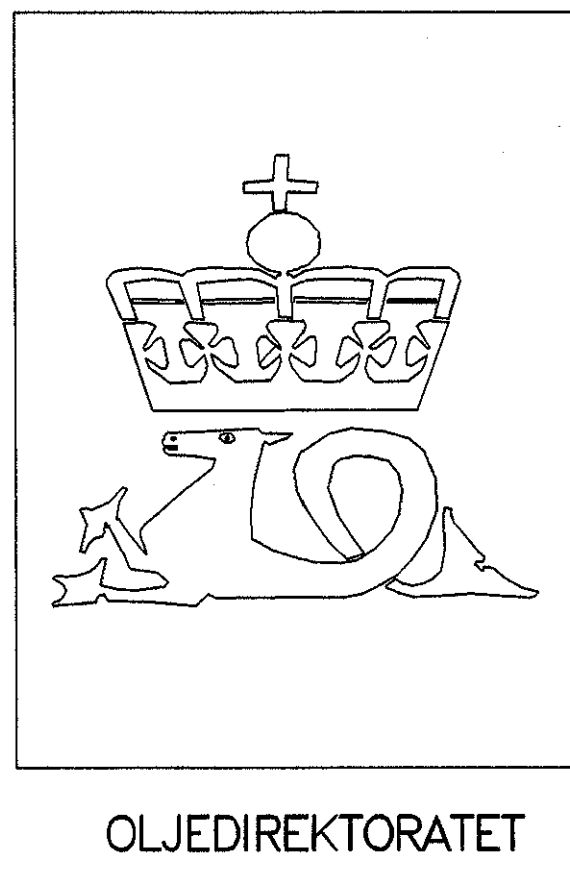


WELL NO: 2/7-22

OPERATOR: BP NORWAY LIMITED U.A.
 LICENSE NO: 145

TOTAL DEPTH: 4750 M RKB
 KBE: 23 M
 WATER DEPTH: 69 M

COORDINATES: 56°17'46.25"N/03°09'32.01"E
 DATUM: ED50
 SPUD CLASSIF.: WILDCAT
 COMPL. CLASSIF.: GAS/COND. DISC.

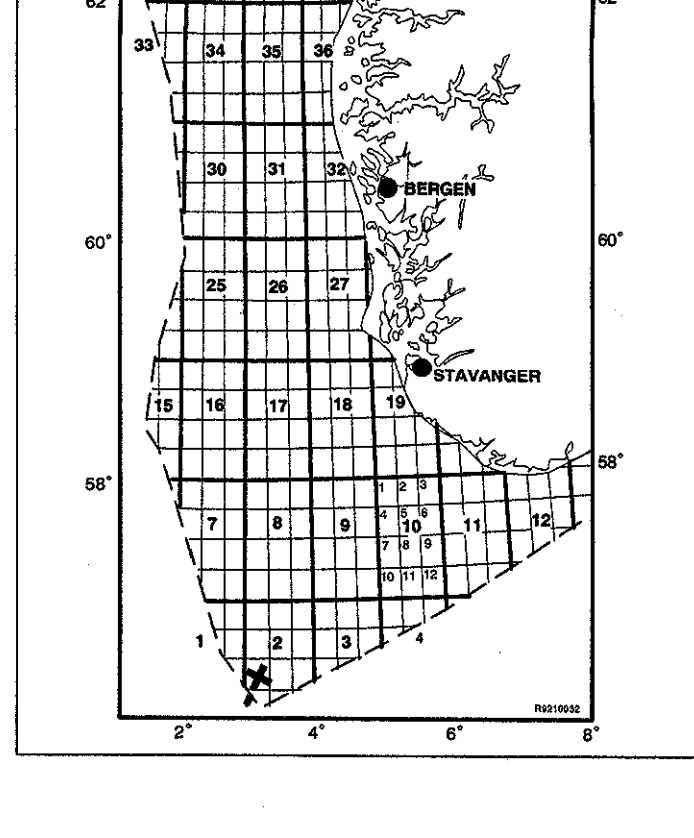


OLJEDIREKTORATET

SPUD DATE: 90.05.17
 COMPL. DATE: 90.10.15
 RIG: ROSS ISLE

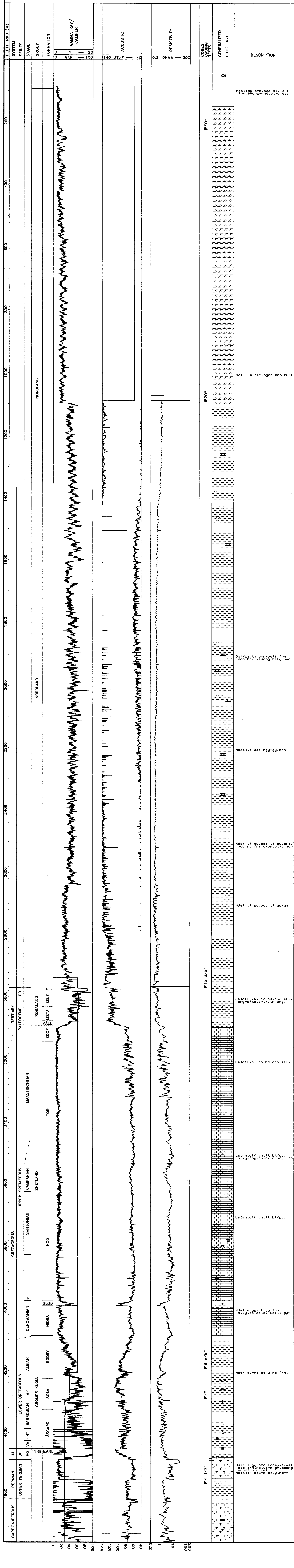
LICENSE GROUP:
 NORSK AGIP A/S 10.000 %
 BP PETROLEUM DEV. OF NORWAY AS 30.000 %
 NORSK HYDRO PRODUKSJON A.S 10.000 %
 DEN NORSKE STATS OLJESELSKAP A.S 50.000 %

LOCATION MAP



COMPLETION LOG

scale 1: 4000



DESCRIPTION

Mdetlgu brn-occ blk.eft-
 frm.sbgng-rnd.blky.occ

Dol. Le stringer-brn-buff

Dol/Ls:lt brn-buff,frm.
 occ brll,ebng-blky,non

Mdetllt occ mgu-gu/brn.

Mdetllt gu,occ lt,gy,eff,t.
 occ nd frm.ocrn-blky,non

Mdetllt gu,occ lt,gy/gn

Ls:off wh,frm-hd,occ eft.
 ang-blky,brll,lr,ang.

Ls:off wh,lt,bl,gy.
 blk,ang,optoxin,ang,lp

Ls:wh,off wh,lt,bl,gy.

Mdetlm gy,brn,tnng,lnes,
 blk,el,oco,ls,lt,gy-

Mdetlgn-dn deku rd,frm.

Sst:lt gy,brn,tnng,lnes,
 blk,el,oco,ls,lt,gy-

Mdetllt blk,deku,nd-v