

**WELL NO: 6407/10-2**

OPERATOR: NORSK HYDRO PRODUKSJON A.S  
 LICENSE NO: 132

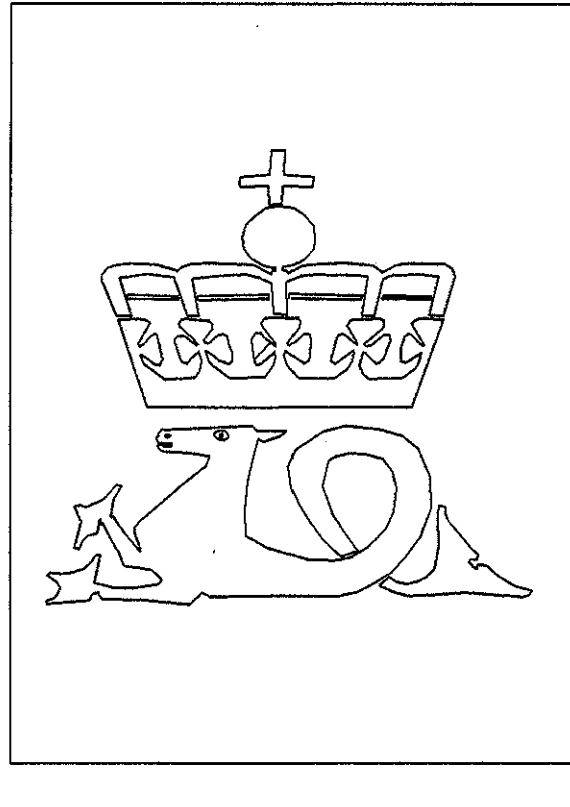
TOTAL DEPTH: 3825 M RKB  
 KBE: 25 M  
 WATER DEPTH: 334 M

COORDINATES: 64°13'44.34"N/07°16'54.02"E  
 DATUM: ED50  
 SPUD CLASSIF.: WILDCAT  
 COMPL. CLASSIF.: SHOWS

SPUD DATE: 90.05.03  
 COMPL. DATE: 90.06.23  
 RIG: VILDKAT EXPLORER

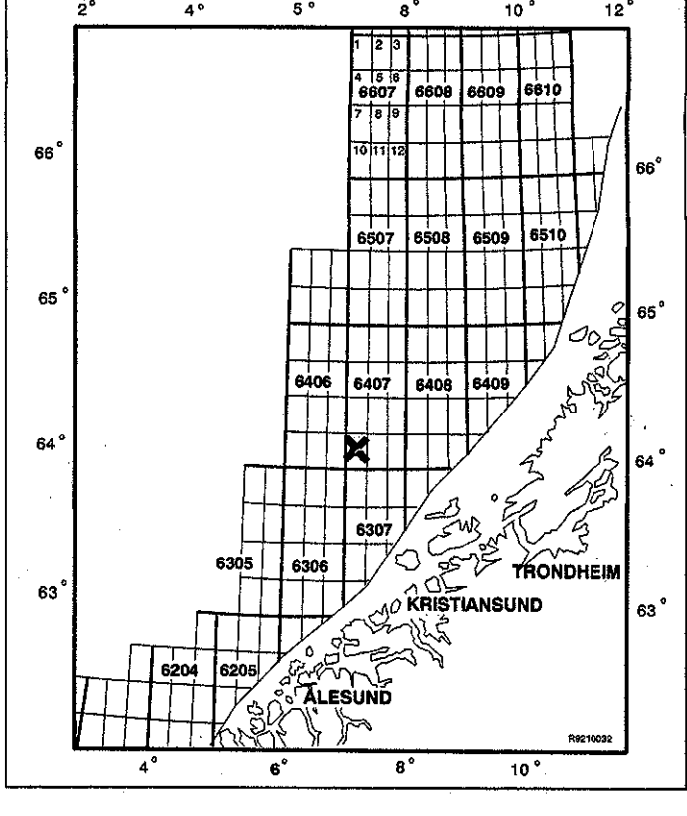
LICENSE GROUP:

NORSK AGIP A/S 10.000 %  
 DEMINEX NORGE AS 10.000 %  
 NORSK HYDRO PRODUKSJON A.S 20.000 %  
 A/S NORSKE SHELL 10.000 %  
 DEN NORSKE STATS OLJESELSKAP A.S 50.000 %



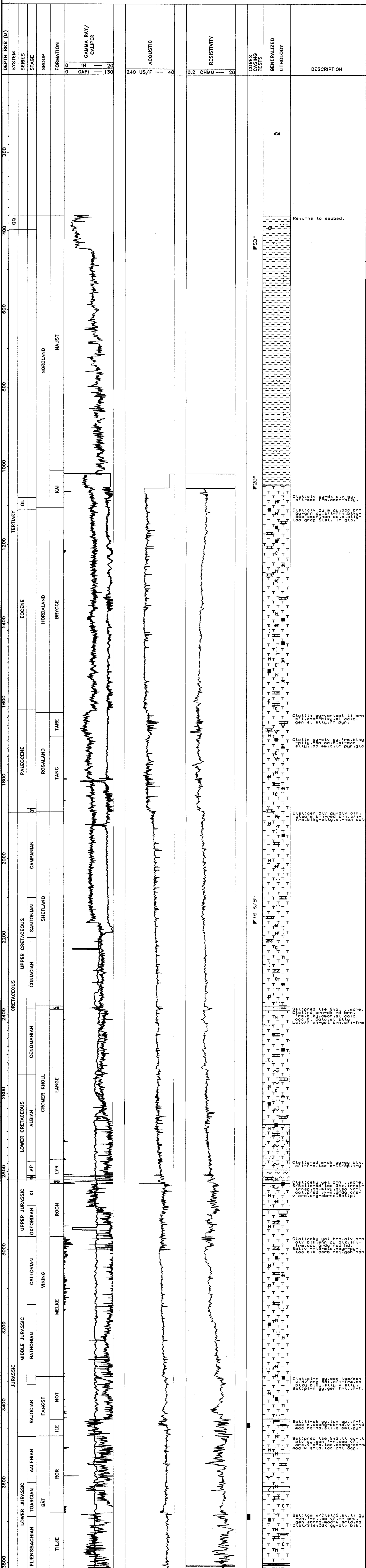
OLJEDIREKTORATET

LOCATION MAP



**COMPLETION LOG**

scale 1: 4000



Returns to seabed.

Cl:lt:olv gu-dk olv gu.  
 eft-rnd fm-onor-bky.

Cl:lt:olv gu-rn gu-oo brn  
 ee-gnd guon col: col: ee  
 loo-grd st: tr glo.

Cl:lt:lv gu-vorcol lt brn  
 ee-gnd ee-ee col: col: ee  
 ee-gnd ee-ee col: col: ee

Cl:lt:lv gu-olv gu-rn-bky  
 ee-ee col: col: ee

Cl:lt:gen olv gu-olv bk.  
 ee-gnd ee-gnd ee-gnd ee-gnd  
 ee-gnd ee-gnd ee-gnd ee-gnd

Set:lvnd lse Qlz. . . . .  
 ee-gnd ee-gnd ee-gnd ee-gnd  
 ee-gnd ee-gnd ee-gnd ee-gnd  
 ee-gnd ee-gnd ee-gnd ee-gnd

Cl:lt:dekv ee-ee brn . . . . .  
 ee-gnd ee-gnd ee-gnd ee-gnd  
 ee-gnd ee-gnd ee-gnd ee-gnd  
 ee-gnd ee-gnd ee-gnd ee-gnd

Cl:lt:pl-m gu-oo lgn/mat  
 ee-gnd ee-gnd ee-gnd ee-gnd  
 ee-gnd ee-gnd ee-gnd ee-gnd  
 ee-gnd ee-gnd ee-gnd ee-gnd

Set:lv-dk gu-lgn ee-gnd ee-gnd  
 ee-gnd ee-gnd ee-gnd ee-gnd  
 ee-gnd ee-gnd ee-gnd ee-gnd  
 ee-gnd ee-gnd ee-gnd ee-gnd

Set:lvnd lse Qlz. lt gu-ll  
 ee-gnd ee-gnd ee-gnd ee-gnd  
 ee-gnd ee-gnd ee-gnd ee-gnd  
 ee-gnd ee-gnd ee-gnd ee-gnd

Set:lvnd lse Qlz. lt gu-ll  
 ee-gnd ee-gnd ee-gnd ee-gnd  
 ee-gnd ee-gnd ee-gnd ee-gnd  
 ee-gnd ee-gnd ee-gnd ee-gnd