

WELL NO: 6507/6-2

OPERATOR: SAGA PETROLEUM ASA
 LICENSE NO: 123

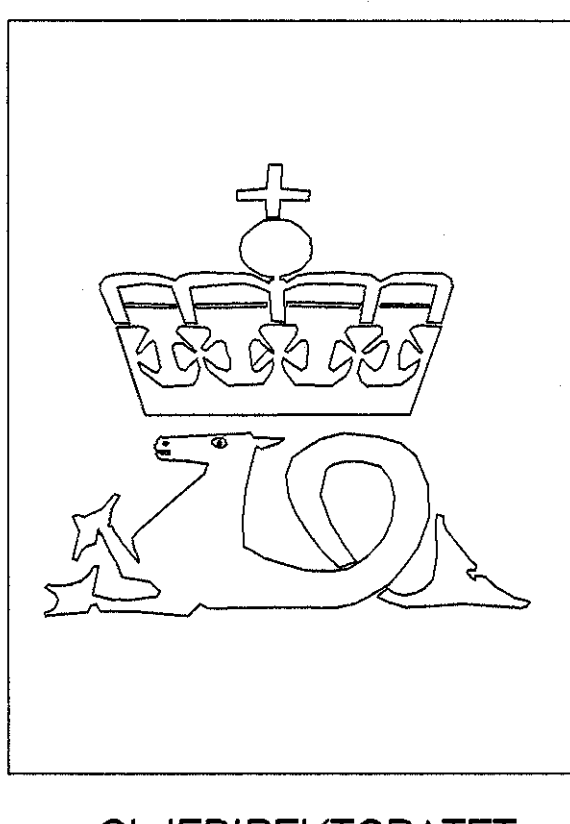
TOTAL DEPTH: 4354 M RKB
 KBE: 18 M
 WATER DEPTH: 315 M

COORDINATES: 65°44'26.42"N/07°41'06.55"E
 DATUM: ED50
 SPUD CLASSIF.: WILDCAT
 COMPL. CLASSIF.: P&A. OIL SHOWS

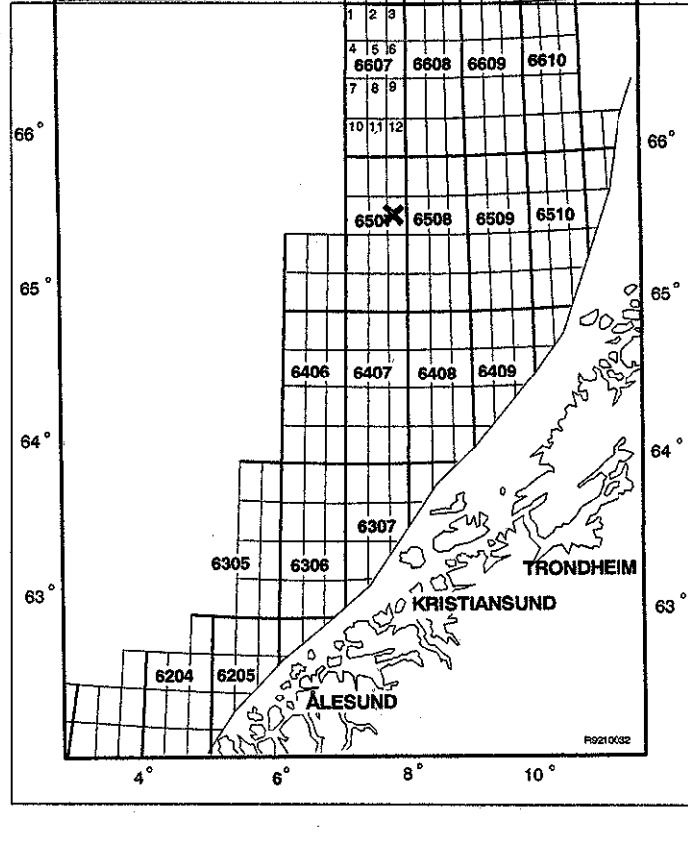
SPUD DATE: 91.04.27
 COMPL. DATE: 91.07.16
 RIG: WEST ALPHA

LICENSE GROUP:

BP PETROLEUM DEV. OF NORWAY AS 15.000 %
 ELF PETROLEUM NORGE AS 10.000 %
 SAGA PETROLEUM ASA 15.000 %
 DEN NORSKE STATS OLJESELSKAP A.S 50.000 %
 TOTAL NORGE AS 10.000 %

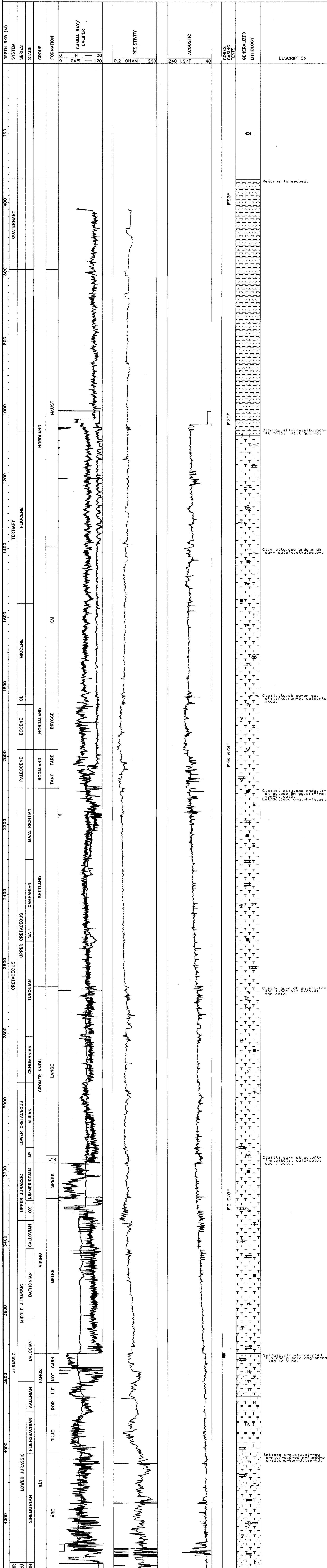


OLJEDIREKTORATET



COMPLETION LOG

scale 1: 4000



DEPTH RKB (M) 0 200 400 600 800 1000 1200 1400 1600 1800 2000 2200 2400 2600 2800 3000 3200 3400 3600 3800 4000 4200

RR RI RU RH

SYSTEM QUATERNARY TERTIARY CRETACEOUS JURASSIC

STAGE PLEISTOCENE PLOCENE MIOCENE PALEOCENE EOCENE OLI

GROUP NAUST HORDALAND KAI BRYGGE TARE LANGE MELKE GARN NOT ILE TILJE ROR FANGST VIKING CALLOWAN SA TURONIAN SHETLAND HORDALAND NAUST

FORMATION NAUST

GAMMA RAY / CALIFER 0 IN 20 0 GAPI 120

RESISTIVITY 0.2 OHMM 200

ACOUSTIC 240 US/F 40

CASING LOGS TESTS

GENERALIZED LITHOLOGY

DESCRIPTION

15 3/8" 20" 30"

Cl: m gu, eft-frm, atky, non-el, o&to, silt gu, p-o.

Cl: tv, etly, ooc, andy, m, dk, gu-m, gu, eft, atky, ooc, ocv.

Cl: t: etly, dk, dk, br, bc, m, lo, dk, dk, dk, non-el, co, gu, m, lo, dk.

Cl: t: etly, ooc, andy, m, dk, non-el, ooc, dk, gu, m, gu, eft, atky, ooc, ocv.

Cl: t: m, ooc, m, dk, dk, dk, non-el, ooc, ocv.

Cl: t: etly, ooc, andy, m, dk, non-el, ooc, dk, gu, m, gu, eft, atky, ooc, ocv.

Sp: t: qz, c, tr, v, f, m, s, pred, t, r, m, o, s, t, d, o, n, g, s, b, r, n, d, (see to v, nd).

Sp: t: ooc, and, qz, c, tr, v, f, m, s, pred, t, r, m, o, s, t, d, o, n, g, s, b, r, n, d, (see to v, nd).