

WELL NO: 6406/11-1S

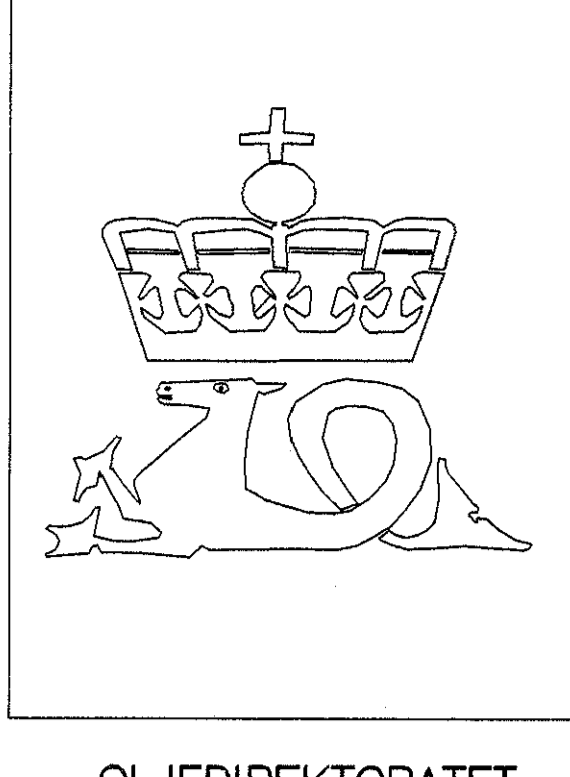
OPERATOR: SAGA PETROLEUM ASA
 LICENSE NO: 156

TOTAL DEPTH: 4185 M RKB
 KBE: 25 M
 WATER DEPTH: 315 M

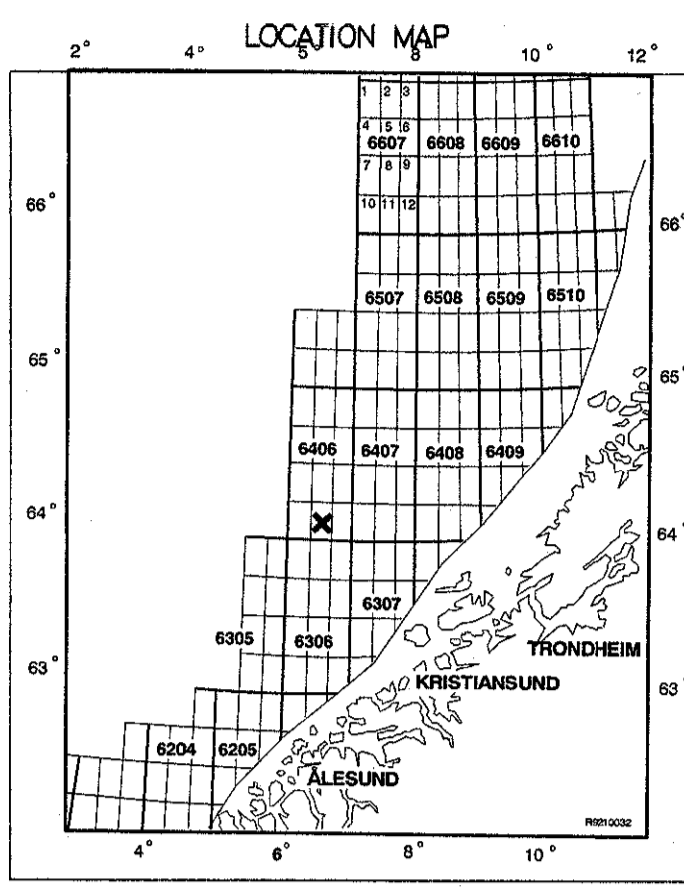
COORDINATES: 64°02'46.02"N/06°36'14.16"E
 DATUM: ED50
 SPUD CLASSIF.: WILDCAT
 COMPL. CLASSIF.: P&A. SHOWS

SPUD DATE: 90.10.19
 COMPL. DATE: 91.02.22
 RIG: TREASURE SAGA

LICENSE GROUP:
 AMERADA HESS NORGE AS 10.000 %
 MOBIL DEVELOPMENT NORWAY AS 20.000 %
 SAGA PETROLEUM ASA 20.000 %
 DEN NORSKE STATS OLJESELSKAP A.S 50.000 %

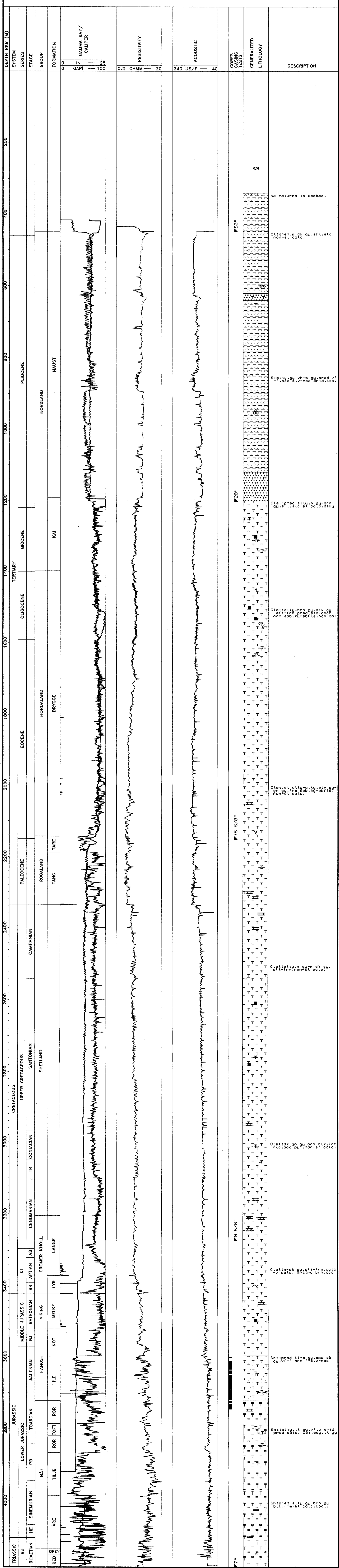


OLJEDIREKTORATET



COMPLETION LOG

scale 1: 4000



20"

20"

9 5/8"

9 5/8"

No returns to seabed.
 Cl:aren.m.dk gy.eft.etc.
 non-st. col.

Silt:gy. uhm. gy. red. v.
 af. fr. mod. s. to. o. d.

Cl:et:pred. silt. m. gy. brn.
 gy. eft. etc. et. col. sek.

Cl:et: silt. brn. gy. col. gy.
 ooc. ebbtky-sbrte. non. col.

Cl:et: silt. m. gy. col. gy.
 non-st. col.

Cl:et: silt. m. gy. m. dk. gy.
 eft. fr. non-st. col.

Cl:et: dk. gy. brn. silt. fr.
 etc. ooc. gy. non-st. col.

Cl:et: m. dk. gy. eft. fr. col.
 v. col. silt. brn. ooc.

Silt: pred. silt. m. gy. ooc. dk.
 gy. v. fr. and s. mod.

Silt: pred. silt. m. gy. ooc. dk.
 gy. v. fr. and s. mod.

Silt: pred. silt. m. gy. ooc. dk.
 gy. v. fr. and s. mod.