

Well no : 6609/11-01 Operator : HYDRO
 Coordinates : 66 08 13.90 N UTM coord. : 7335502 N
 09 33 47.89 E 525429 E
 Licence no : 083 Permit no : 374
 Rig : TREASURE SEEKER Rig type : SEMI-SUB.
 Contractor : WILHELMSSEN OFFSHORE SERVICES
 Bottom hole temperature : 77 deg.C Elev. KB : 25 M
 Spud. date : 83.05.19 Water depth : 238 M
 Compl. date : 83.07.07 Total depth : 3068 M
 Spud. class : WILDCAT Form. at TD : TRIASSIC
 Compl. class : P&A. DRY HOLE Prod. form :
 Seisloca : NH 8102 - 415 SP 4335

LICENSEES

 20,000 ARCO NORWAY INC.
 50,000 DEN NORSKE STATS OLJESELSKAP A.S
 25,000 NORSK HYDRO PRODUKSJON A.S
 5,000 SVENSKA PETROLEUM EXPLORATION A/S

CASING AND LEAK-OFF TESTS

Type	Casing diam.	Depth below KB	Hole diam.	Hole depth below KB	Lot mud eqv. g/cm3
-----	-----	-----	-----	-----	-----
CONDUCTOR	30	325,0	36	332,0	
SURF.COND.	20	896,0	26	915,0	1,58
INTERM.	13 3/8	1849,0	17 1/2	1864,0	2,00
OPEN HOLE			12 1/4	3068,0	

CONVENTIONAL CORES

Core no.	Intervals cored meters	Recovery		Series
		M	%	
-----	-----	-----	-----	-----
1	2548.0 - 2566.6	18.6	100.0	LOWER JURASSIC
2	2717.0 - 2735.0	17.1	95.0	LOWER JURASSIC

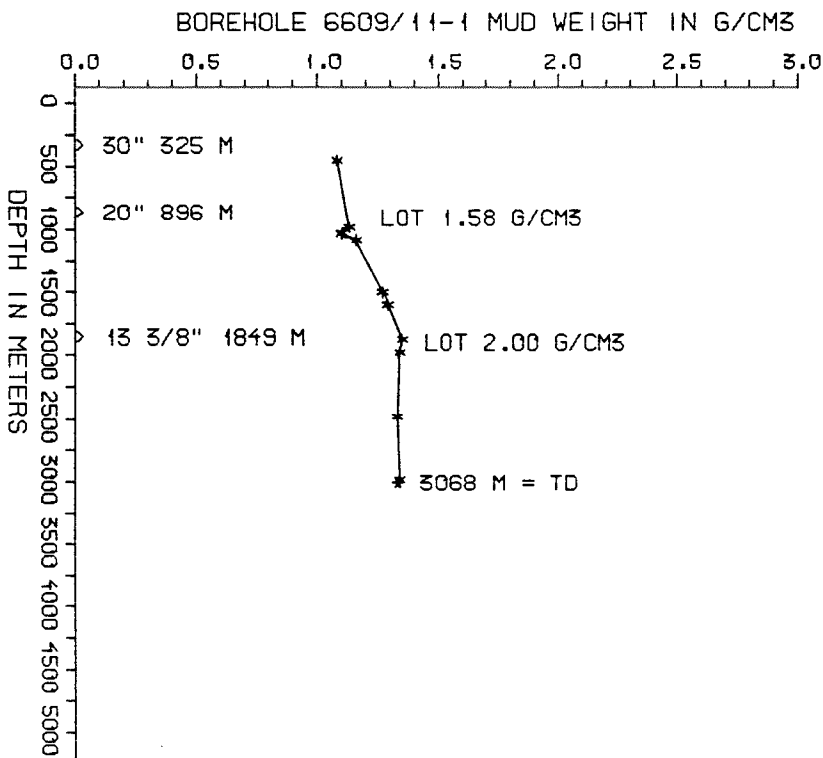
DRILL STEM TEST									
TEST NO	DEPTH BELOW KB	CHOKE SIZE mm	RECOVERY					PRESS. (psi)	
			OIL Sm ³ /d	GAS M Sm ³ /d	OIL GRAV. g/cm ³	GAS GRAV. rel. air	GOR m ³ /m ³	WHFP	BHFP
	NONE								

AVAILABLE LOGS			
LOG TYPE	INTERVALS	1/200	1/500
ISF LSS GR (GR:250-323)	323 - 913	X	
ISF LSS	896 - 1806	X	
ISF LSS	1806 - 1863	X	
ISF LSS MSFL	1849 - 3067	X	
ISF LSS GR (GR:250-323)	323 - 3067		X
LDL CNL	323 - 913	X	
LDL CNL	826 - 1863	X	
LDL CNL	1850 - 3067	X	
LDL CNL	323 - 3067		X
MERGE PLAYBACK	323 - 3067	1:1000	X
CDM	1191 - 1857	X	
SHDT	1849 - 3064	X	
CDM AP	1193 - 1856	X	X
STRATADIP	1829 - 3100	X	
STRAIN GAUGE	2555 - 3039	X	
HP GAUGE	2555 - 3039	X	
DLWD - Downhole Logging While Drilling	1103 - 3068		X
CBL VDL CCL	600 - 1849	X	
DXC NXB	332 - 3068	1:5000	
TEMPERATURE DATA	332 - 3068	1:5000	
DRILLING DATA PRESSURE	332 - 3068	1:5000	
MUD	332 - 3068		X
VELOCITY (S.C.L.)	323 - 3067		X
(Geogram Synthetic Seismogram, minimum phase, normal/reverse polarity,		2 stk)	
(Seismic Check Shots, 510-3044 m,		1 stk)	

MUD PROPERTIES			
DEPTH BELOW KB m	WEIGHT g/cm ³	FUNNEL VISC. sec	FILTRATE LOSS cm ³
350	1.05	100	
850	1.10	100	
950	1.07	47	
1050	1.13	47	
1460	1.24	47	
1550	1.26	53	
1800	1.32	55	
1900	1.31	48	
2390	1.30	47	
2900	1.31	47	

DRILL BIT CUTTINGS AND WET SAMPLES		
SAMPLE TYPE	INTERVAL BELOW KB	NUMBER OF SAMPLES
CUTTINGS	332-3068	720
WET SAMPLES	340-3067	570

SHALLOW GAS	
DEPTH INTERVAL m KB	REMARKS
	NONE



WELL HISTORY - 6609/11-1

GENERAL:

The primary objective of wildcat 6609/11-1 was to test sandstone reservoirs of Middle to Lower Jurassic age in a structurally high position on a narrow SW-NE trending horst block. The secondary objective was to test sandstone reservoirs of Lower Jurassic to Upper Triassic age. The well encountered good quality sandstone reservoirs of Lower Jurassic and Upper Triassic age. These reservoirs were water bearing with minor amounts of residual hydrocarbons indicated on the logs.

OPERATIONS:

The well was spudded 19.05.83 by the semi-submersible rig Treasure Seeker. Two cores were cut in the Lower Jurassic sands. No major problems occurred during drilling. The well was drilled using waterbased mud.

TESTING:

The well was not tested.

GEOLOGICAL TOPS
WELL 6609/11-1

	Depth m (RKB)
Nordland Group	263,0
Hordaland Group	1222,0
Brygge Fm	1222,0
Rogaland Group	1479,0
Tare Fm	1479,0
Tang Fm	1550,0
Shetland Group	1640,0
Cromer Knoll Group	1830,0
Lange Fm	1830,0
Lyr Fm	2063,0
Viking Group	2069,0
Spekk Fm	2069,0
Melke Fm	2226,0
Båt Group	2478,0
Ror Fm	2478,0
Tilje Fm	2546,0
Åre Fm	2735,0
TD=	3068,0