

Well no : 6407/ 2-02

Operator : SAGA

Coordinates	: 64 59 36.64 N 07 31 53.08 E	UTM coord.	: 7208716 N 430730 E
Licence no	: 074	Permit no	: 375
Rig	: TREASURE SAGA	Rig type	: SEMI-SUB.
Contractor	: WILHELMSSEN OFFSHORE SERVICES		
Bottom hole temperature	: 91 deg.C	Elev. KB	: 26 M
Spud. date	: 83.05.17	Water depth	: 258 M
Compl. date	: 83.07.31	Total depth	: 3351 M
Spud. class	: WILDCAT	Form. at TD	: TRIASSIC
Compl. class	: P&A. GAS/COND. DISC.	Prod. form	:
Seisloca	: SG 8271 - 10 SP 474		

LICENSEES

15,000 ARCO NORWAY INC.
 10,000 DEMINEX (NORGE) A/S
 50,000 DEN NORSKE STATS OLJESELSKAP A.S
 15,000 NORSK AGIP A/S
 10,000 SAGA PETROLEUM A.S

CASING AND LEAK-OFF TESTS

Type	Casing diam.	Depth below KB	Hole diam.	Hole depth below KB	Lot mud eqv. g/cm ³
CONDUCTOR	30	398,0	36	398,0	
SURF.COND.	20	860,0	26	865,0	1,61
INTERM.	13 3/8	1966,0	17 1/2	1995,0	1,71
INTERM.	9 5/8	2676,0	12 1/4	2735,0	
OPEN HOLE			8 1/2	3351,0	

CONVENTIONAL CORES

Core no.	Intervals cored meters	Recovery M	%	Series
1	2461.3 - 2473.0	9.8	83.8	MIDDLE JURASSIC
2	2473.0 - 2479.0	3.2	53.3	MIDDLE JURASSIC
3	2479.0 - 2497.0	18.0	100.0	MIDDLE JURASSIC
4	2497.0 - 2501.0	2.2	55.0	MIDDLE JURASSIC
5	2501.0 - 2508.0	5.4	77.1	MIDDLE JURASSIC
6	2508.0 - 2518.0	5.8	58.0	MIDDLE JURASSIC
7	2518.0 - 2527.0	9.0	100.0	MIDDLE JURASSIC

CONVENTIONAL CORES(cont.)

Core no.	Intervals cored meters	Recovery		Series
		M	%	
8	2527.0 - 2536.0	7.4	82.2	MIDDLE JURASSIC
9	2536.0 - 2552.0	13.0	81.3	MIDDLE JURASSIC
10	2552.0 - 2565.0	7.0	53.8	MIDDLE JURASSIC
11	2565.0 - 2582.0	14.7	86.5	MIDDLE JURASSIC
12	2582.0 - 2583.5	1.2	80.0	MIDDLE JURASSIC

DRILL STEM TEST									
TEST NO	DEPTH BELOW KB	CHOKE SIZE mm	RECOVERY					PRESS. (psi)	
			OIL Sm ³ /d	GAS M Sm ³ /d	OIL GRAV. g/cm ³	GAS GRAV. rel.air	GOR m ³ /m ³	WHFP	BHFP
			1	2476 - 2484	23.8	119 *	994		

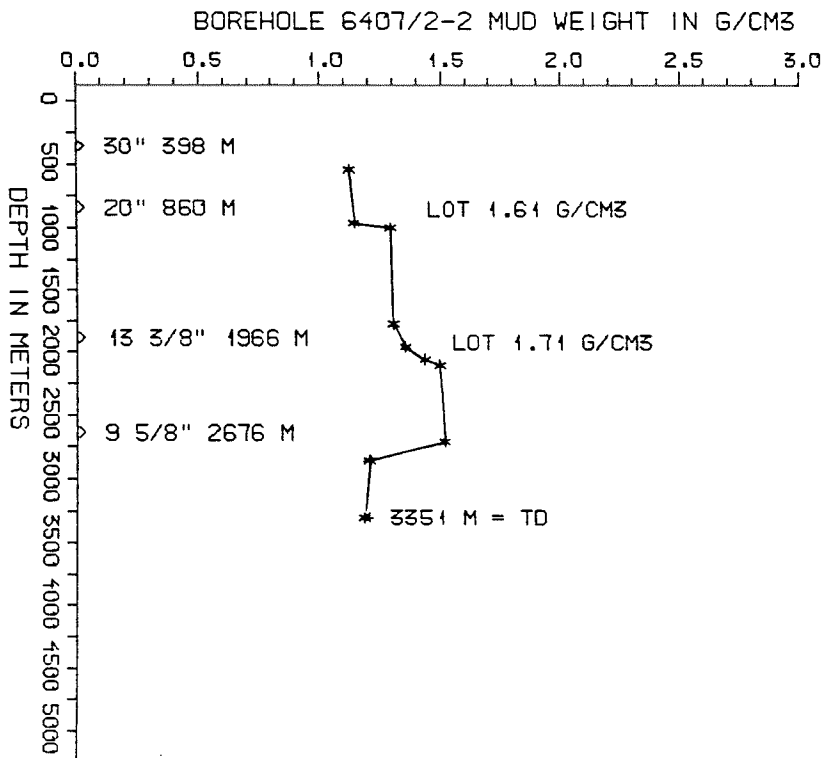
* = CONDENSATE

AVAILABLE LOGS			
LOG TYPE	INTERVALS	1/200	1/500
DIFL BHC AC GR	398 - 865	X	X
DIFL BHC AC	860 - 1986	X	X
DIFL BHC AC	1966 - 2698	X	X
DIFL BHC AC	2676 - 3346	X	X
CDL GR (GR:280-398)	398 - 866	X	X
CDL	860 - 1985	X	X
CDL CNL	1954 - 2697	X	X
CDL CNL	2676 - 3346	X	X
DLL MLL	1966 - 2734	X	X
CDM	1966 - 2733	X	
CDM	2675 - 3345	X	
CDM AP	1966 - 2733	X	X
CDM AP	2675 - 3345	X	X
SPECTRALOG	1960 - 2695	X	X
HRT	329 - 1917		X
HRT	334 - 1975		X
FMT (TEST 1-59)	2462 - 2721		X
FMT (TEST 1-6)	2512 - 2512		X
FMT (TEST 1-13)	2800 - 3323		X
CALIPER	398 - 863	X	X
CALIPER	398 - 865	X	X
CBL VDL AC	1750 - 2676	X	
VELOCITY (L.T.S.)	398 - 3346	1:1000	X
(Air Gun Velocity Survey & C.L.D.		1 stk)	
(Synthetic Seismogram Marine, 10 cm/s,		1 stk)	
(Synthetic Seismogram, b/p-w/t, 10 cm/s,		2 stk)	
(VSP, 10 cm/s, b/p-w/t, proc. Sept-83,		7 stk)	

MUD PROPERTIES			
DEPTH BELOW KB m	WEIGHT g/cm ³	FUNNEL VISC. sec	FILTRATE LOSS cm ³
490	1.09	50	
830	1.11	48	
880	1.26	42	
1720	1.27	50	
1900	1.32	59	
2000	1.40	46	
2220	1.46	45	
2680	1.48	60	
2800	1.17	41	
3250	1.15	44	

DRILL BIT CUTTINGS AND WET SAMPLES		
SAMPLE TYPE	INTERVAL BELOW KB	NUMBER OF SAMPLES
CUTTINGS	410-3351	680
WET SAMPLES	400-3350	468

SHALLOW GAS	
DEPTH INTERVAL m KB	REMARKS
512	POSSIBLE SHALLOW GAS



WELL HISTORY - 6407/2-2

GENERAL:

The objectives of the wildcat 6407/2-2 was to test the entire stratigraphic sequence between the seabed and into Upper Triassic. The primary target of the well was the Middle Jurassic sandstone, secondary target was the Lower Jurassic sandstone. The upper unit of the Middle Jurassic sandstone was found hydrocarbon bearing, the Lower Jurassic was water bearing.

OPERATIONS:

The well was spudded 17.05.83 by the semi-submersible rig Treasure Saga. 12 cores were cut in the Middle Jurassic sequence. After drilling the 26" hole the well was observed flowing and the mudweight was corrected. No other major problems occurred during drilling.
The well was drilled with waterbased mud.

TESTING:

One drill stem test was carried out in the gas bearing interval of the Middle Jurassic sandstone.

GEOLOGICAL TOPS
WELL 6407/2-2

	Depth m (RKB)
Nordland Group	284,0
Hordaland Group	1384,0
Rogaland Group	1955,0
Tare Fm	1955,0
Tang Fm	2035,0
Shetland Group	2088,0
Cromer Knoll Group	2328,0
Viking Group	2409,5
Spekk Fm	2409,5
Melke Fm	2417,0
Fangst Group	2461,0
Båt Group	2709,0
TD=	3351,0