

Well no : 7120/ 7-02

Operator : STATOIL

Coordinates	: 71 19 11.49 N 20 19 44.31 E	UTM coord.	: 7913418 N 476011 E
Licence no	: 077	Permit no	: 377
Rig	: WEST VANGUARD	Rig type	: SEMI-SUB.
Contractor	: A/S SMEDVIK DRILLING CO.		
Bottom hole temperature	: 74 deg.C	Elev. KB	: 22 M
Spud. date	: 83.05.26	Water depth	: 242 M
Compl. date	: 83.08.21	Total depth	: 2523 M
Spud. class	: WILDCAT	Form. at TD	: TRIASSIC
Compl. class	: P&A. GAS/COND. DISC.	Prod. form	:
Seisloca	: 513 - 123 SP 996		

LICENSEES

15,000 NORSK HYDRO PRODUKSJON A.S
 10,000 PHILLIPS PETROLEUM CO NORWAY
 5,000 SAGA PETROLEUM A.S
 50,000 DEN NORSKE STATS OLJESELSKAP A.S
 10,000 TEXACO EXPLORATION NORWAY A/S
 10,000 TOTAL MARINE NORSK A.S

CASING AND LEAK-OFF TESTS

Type	Casing diam.	Depth below KB	Hole diam.	Hole depth below KB	Lot mud eqv. g/cm ³
-----	-----	-----	-----	-----	-----
CONDUCTOR	30	325,5	36	330,0	
SURF.COND.	20	365,0	26	367,0	
INTERM.	13 3/8	800,0	17 1/2	815,0	1,65
INTERM.	9 5/8	1502,0	12 1/4	1515,0	1,80
LINER	7	2519,0	8 1/2	2523,0	

CONVENTIONAL CORES

Core no.	Intervals cored meters	Recovery		Series
		M	%	
-----	-----	-----	-----	-----
1	2168.0 - 2186.0	17.8	98.9	MIDDLE JURASSIC
2	2186.0 - 2190.0	2.9	72.5	MIDDLE JURASSIC
3	2190.0 - 2208.0	17.4	96.7	M/L. JURASSIC
4	2208.0 - 2227.0	19.0	100.0	LOWER JURASSIC
5	2227.0 - 2244.5	17.0	97.1	LOWER JURASSIC

DRILL STEM TEST									
TEST NO	DEPTH BELOW KB	CHOKE SIZE mm	RECOVERY					PRESS. (psi)	
			OIL Sm ³ /d	GAS M Sm ³ /d	OIL GRAV. g/cm ³	GAS GRAV. rel. air	GOR m ³ /m ³	FSIP	WHP
			1	2187 - 2193 2168 - 2180 2153 - 2164	25.4	* 30	702.45		

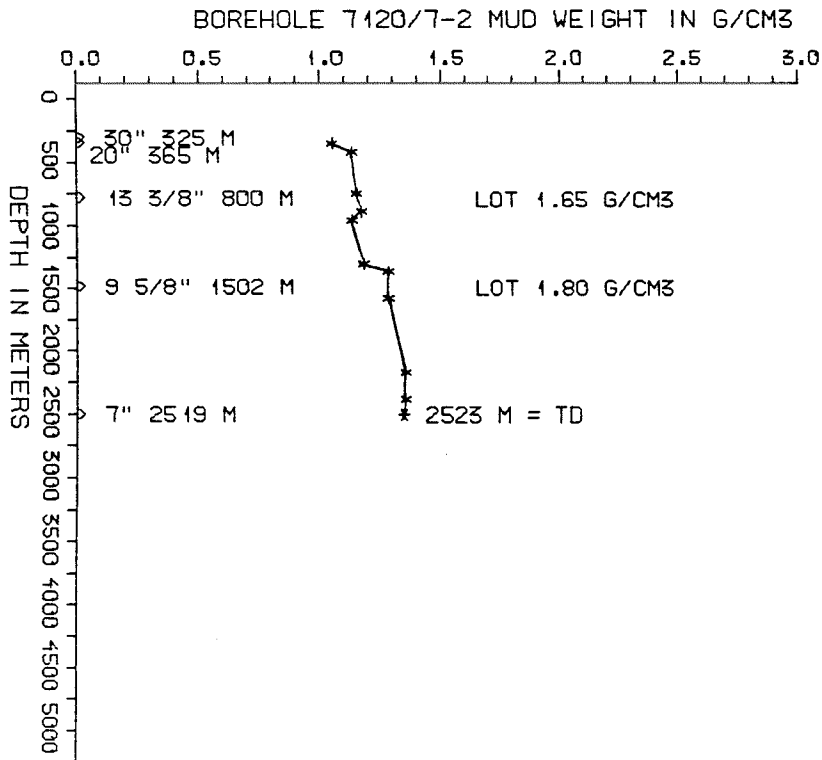
* - CONDENSATE

AVAILABLE LOGS			
LOG TYPE	INTERVALS	1/200	1/500
ISF BHC MSFL GR	263 - 411	X	X
ISF BHC	365 - 813	X	X
ISF BHC	800 - 1515	X	X
ISF BHC MSFL	1502 - 2222	X	X
ISF BHC	2125 - 2516	X	X
LDL CNL	325 - 411	X	X
LDL	365 - 812	X	X
LDL	800 - 1514	X	X
LDL CNL	1514 - 2517	X	X
DLL MSFL SP	2125 - 2300	X	X
CDM	800 - 1512	X	
CDM AP	800 - 1510	X	X
CDM AP (CYBERDIP)	1502 - 2517	X	
SHDT	1502 - 2517	X	
NGT PLAYBACK	2125 - 2516	X	X
RFT	2151 - 2491	1:100	
CBL VDL	263 - 800	X	
CBL VDL	263 - 1502	X	
CBL VDL CCL	1352 - 2370	X	
MUD	234 - 2523		X
VELOCITY (S.C.L.)	263 - 2516		X
(VSP Seismic			1 stk)
(Synthetic Seismogram, Geogram, 10 cm/s			8 stk)
(Plot 13b + 14b			2 stk)

MUD PROPERTIES			
DEPTH BELOW KB m	WEIGHT g/cm ³	FUNNEL VISC. sec	FILTRATE LOSS cm ³
275	1.02		
340	1.10		
670	1.12		
815	1.14		
880	1.10		
1230	1.15		
1285	1.25		
1500	1.25		
2095	1.32		
2300	1.32		
2523	1.32		

DRILL BIT CUTTINGS AND WET SAMPLES		
SAMPLE TYPE	INTERVAL BELOW KB	NUMBER OF SAMPLES
CUTTINGS	330 - 2523	400
WET SAMPLES	330 - 2520	660

SHALLOW GAS	
DEPTH INTERVAL m KB	REMARKS
378-380	POSSIBLE SHALLOW GAS



WELL HISTORY - 7120/7-2

GENERAL:

The primary objective of wildcat 7120/7-2 was to test possible hydrocarbon accumulations in sandstones of Middle to Lower Jurassic age. Gas were discovered in the sandstone intervals, the reservoir showed good to excellent reservoir properties.

OPERATIONS:

The well was spudded 26.05.83 by the semi-submersible rig West Vanguard. Five cores were cut in the Jurassic sandstones. No major problems occurred during the drilling of this well. The well was drilled using waterbased mud.

TESTING:

One DST was performed in the hydrocarbon zone. The test produced gas and some condensate.

GEOLOGICAL TOPS
WELL 7120/7-2

	Depth m (RKB)
Nordland Group	263,0
Sotbakken Group	380,0
Torsk Fm	380,0
Nygrunnen Group	948,0
Kveite Fm	948,0
Nordvestbanken Group	1093,0
Kolmule Fm	1093,0
Kolje Fm	1666,0
Knurr Fm	1988,0
Teistengrunnen Group	2017,0
Hekkingen Fm	2017,0
Fuglen Fm	2141,0
Realgrunnen Group	2150,0
Stø Fm	2150,0
Nordmela Fm	2257,0
Tubåen Fm	2387,0
Fruholmen Fm	2435,0
TD =	2523,0