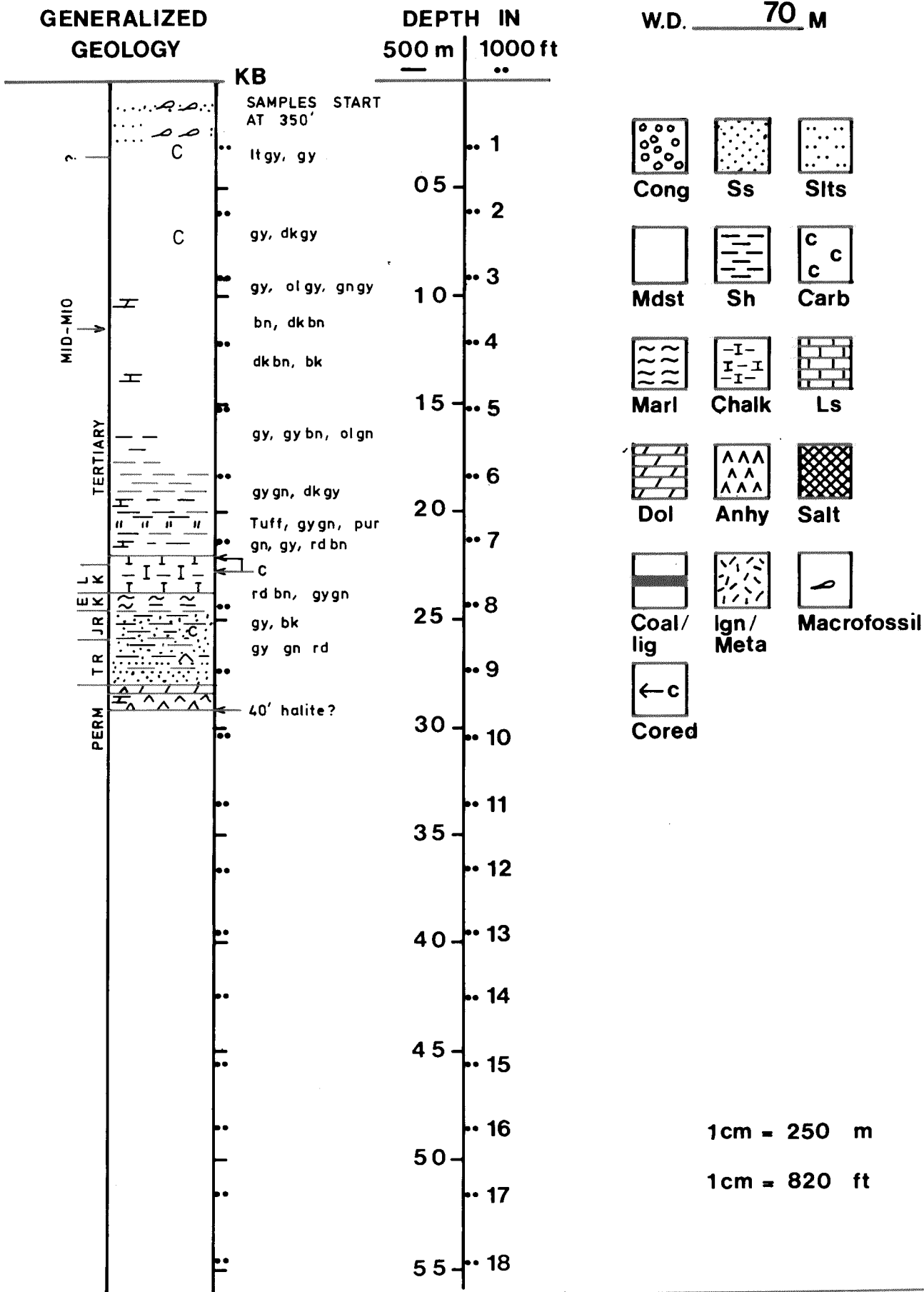


WELL NO 7/9-1 OPERATOR CONOCO

T.D. 2931 M

K.B. 31 M

W.D. 70 M



WELL ID: 7/9-I COORDINATES: 57°20'37" N 02°51'21" E LICENSEE: CONOCO/GULF-GROUP
 LICENSE NO: 020 KBE: 31M wd 70 M PERMIT NO: 54 PERMIT DATE: 02.04.71 T D 2931 M
 OPERATOR: CONOCO NORWAY CONTRACTOR: ZAPATA NORTH SEA RIG: MAERSK EXPLORER
 SPUD DATE: 22.04.71 COMPLETION DATE: 29.05.71 STATUS: P+A BHT 113.3 °C
 FMTN AT T D: PERMIAN PROD FMTN: PROD FMTN:
 FIELD: CLASSIFICATION: NEW FIELD WILDCAT

CASING RECORD:

LOGS RUN

	DIA. INCH	DEPTH BELOW KB - METRES	HOLE SIZE DIA - INCH	DEPTH BELOW KB - METRES
SFC CGS	30	109	30	109
INT CGS	20	242	26	458
INT CGS	13 3/8	1070	17 1/2	1077
INT CGS	9 5/8	2144	12 1/4	2152
INT CGS				
PROD CGS				

TYPE	INTERVAL METR
IES	1070-2916
BHC/GR	1070-2928
GR	91-1070
FDC/GR	2145-2931
MLL/C	2145-2929
HDT	2146-2932
SRS	1076-2928

CORES

NOS OF CORES	TOTAL METRES	REC METRES
1 CONVENTIONAL	2210.0-2217.3	4.7
1 CONVENTIONAL	2257.0-2260.9	3.0

DST AND WIRELINE TESTS

DEVIATION

TYPE	INTERVAL METRES	REC	FSIBHP	FFP	TEMP °C

DEPTH METRES	DEG
458	0.50
759	0.50
1077	1.00
1860	0.50
2165	1.70
2470	3.30
2774	4.60
2927	5.50

MISC: DEVIATION PROBLEMS AT 2256 METRES, INCREASED STEADILY TO 2723 METRES.